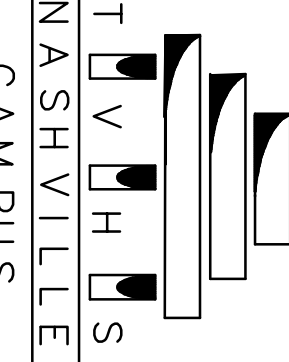
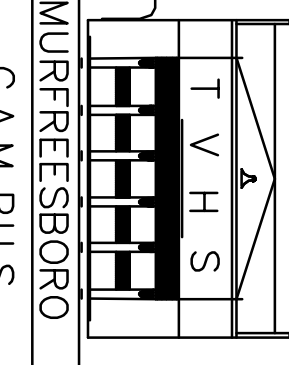




Revisions	Date
	04/11/12



Tennessee Valley Healthcare System
NASHVILLE
CAMPU S



Tennessee Valley Healthcare System
MURFREESBORO
CAMPU S

Tennessee Valley Healthcare System

Drawing Title		Project Title		Date
MECHANICAL RISER DEMOLITION		REPLACE ATTIC AHUS BUILDING 1		01/20/2012
Approved: --	Approved: Facility Manager	Building Number	Checked	Project No.
Approved: --	Approved: Director	1	TCI	626A4-11-203
		Drawn	FILE NAME	DRAWING NO.
		BP		1 - M 7
		Location		1029A02
		TWIS - YORK CAMPUS		

Veterans Administration

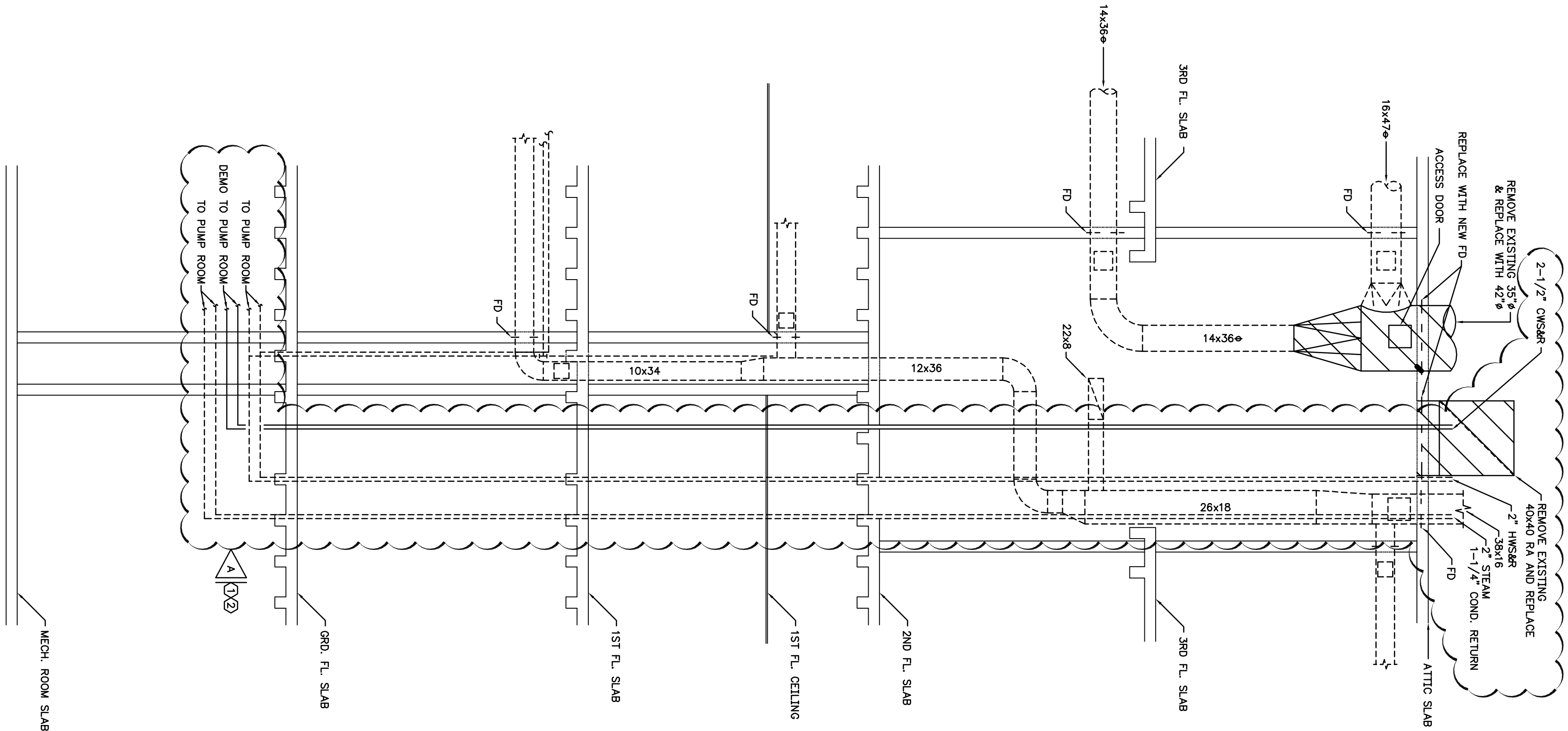
AHU - 1 RISER
MECHANICAL - DEMOLITION

GRAPHIC SCALE (FEET)

DRAWING NOTES:

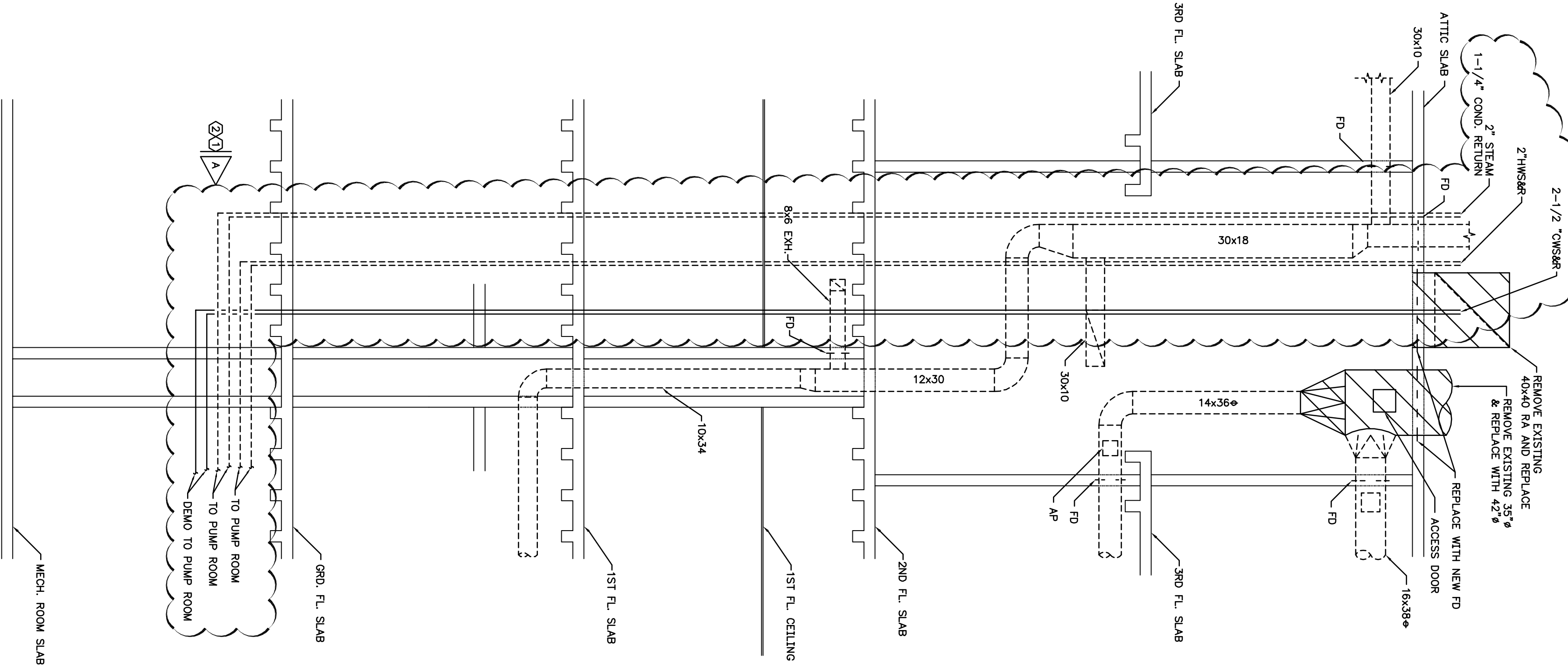
① PRIOR TO DEMOLITION OF CHILLED WATER PIPING IN CHASES, CONTRACTOR SHALL REMOVE AND ABATE ASBESTOS CONTAINING MATERIAL ON CHILLED WATER, HOT WATER, STEAM, AND CONDENSATE RETURN PIPING. SEE SPECIFICATION SECTIONS 02 41 00 - DEMOLITION AND 02 82 11 - TRADITIONAL ASBESTOS ABATEMENT FOR ADDITIONAL INFORMATION.

② DEMO CHILLED WATER PIPING FROM PUMP ROOM TO ATTIC AHUS.



AHU - 2 RISER
MECHANICAL - DEMOLITION

GRAPHIC SCALE (FEET)



CONSTRUCTION DOCUMENTS

