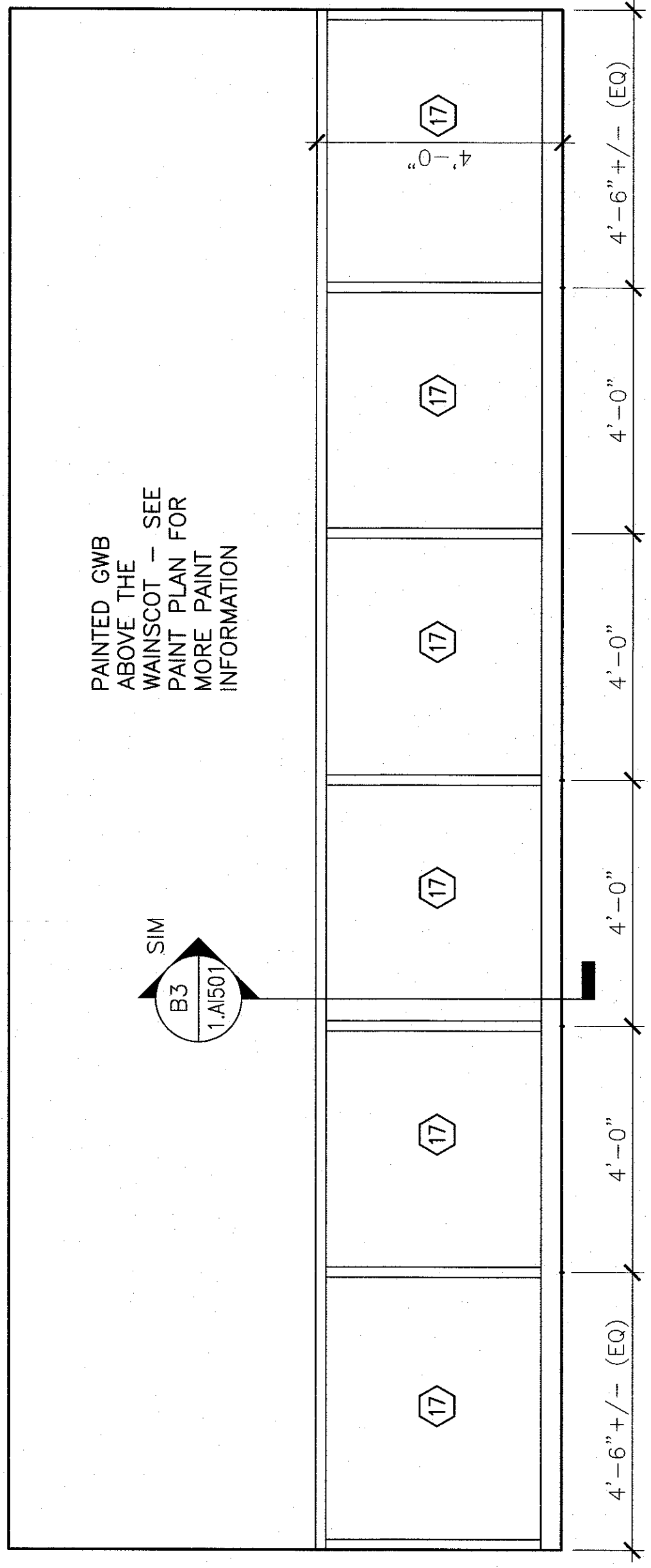
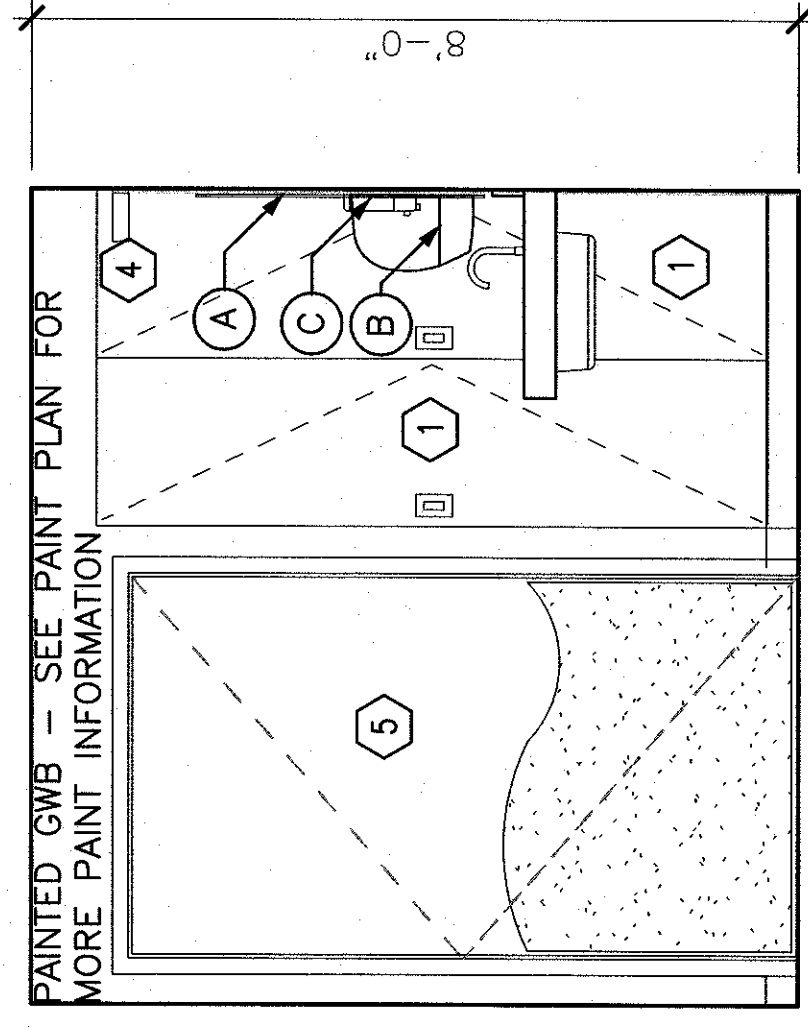


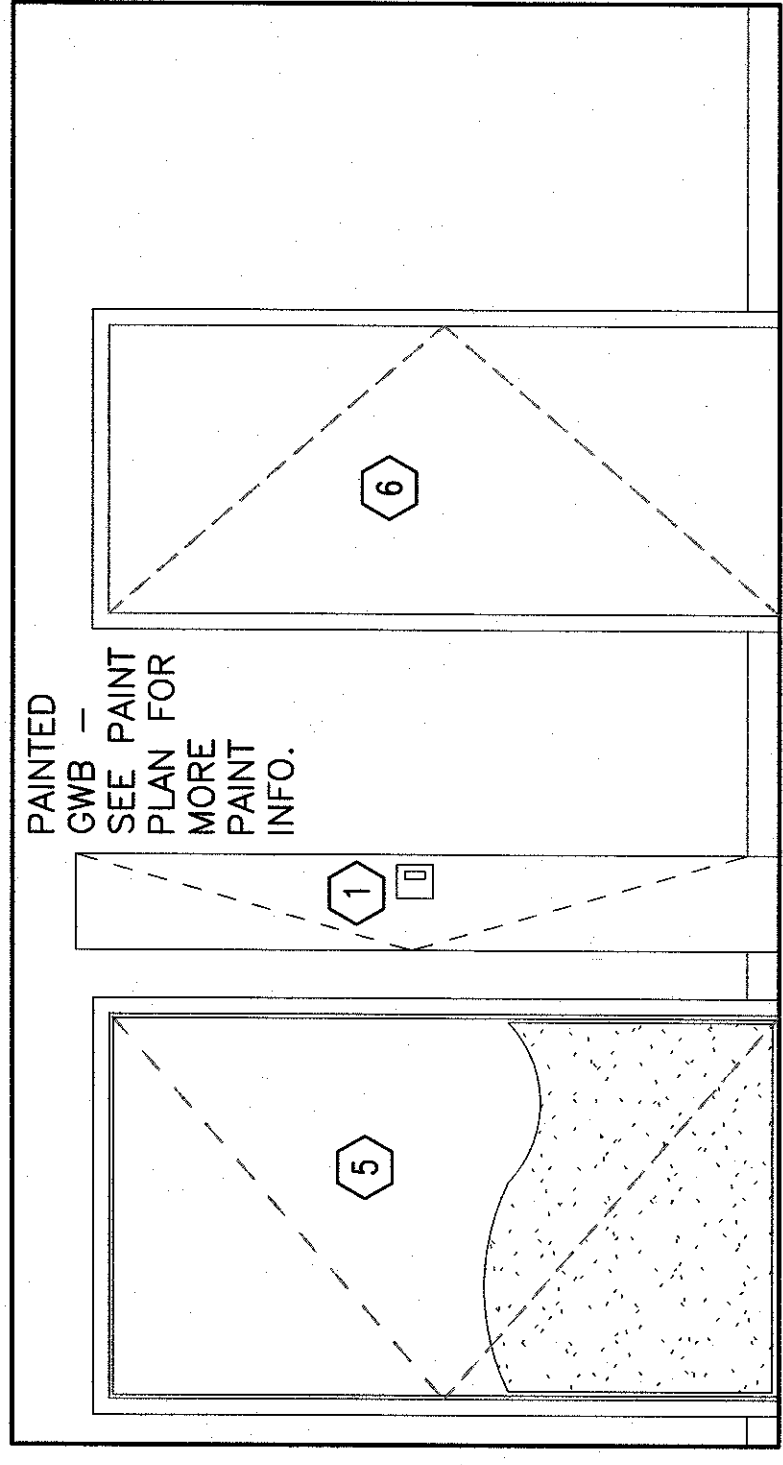
B1 CORRIDOR ELEVATION (TYP.)
1/2" = 1'-0"



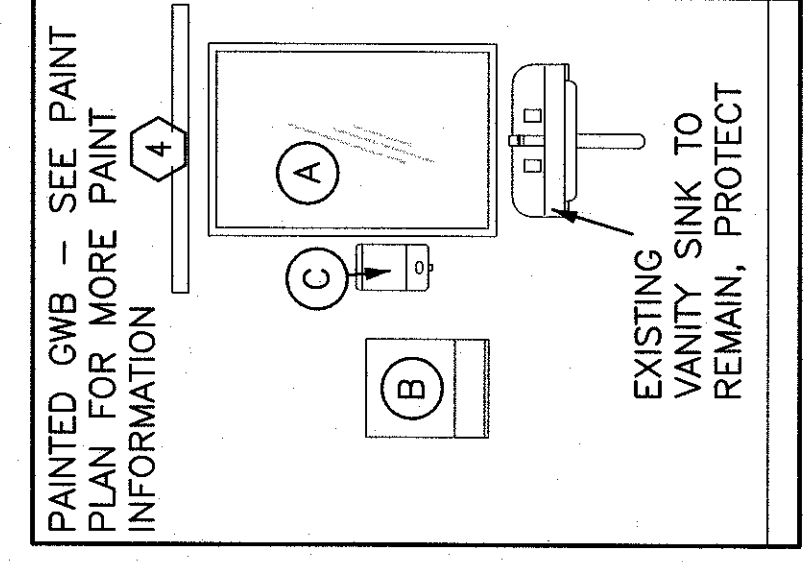
C1 DAY ROOM ELEVATION (SM. TYP.)
1/2" = 1'-0"



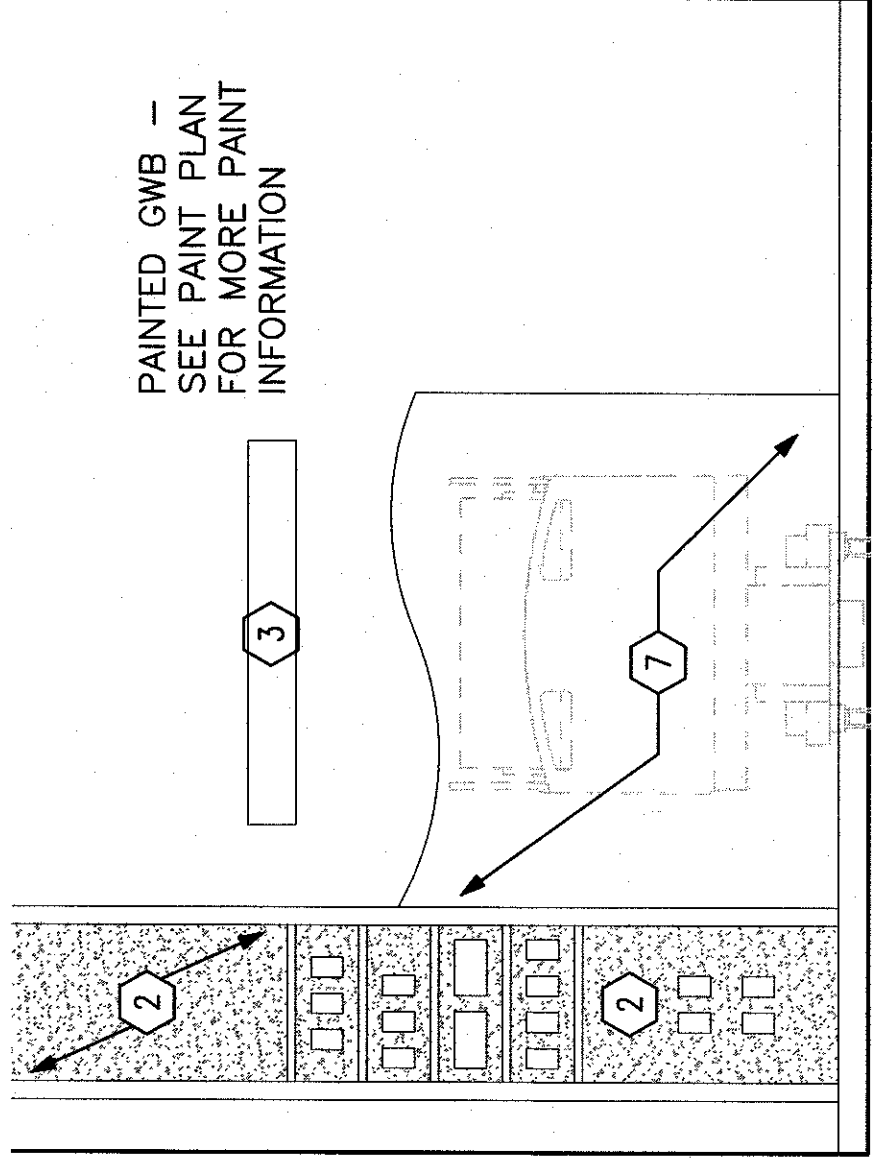
E1 TYPICAL ANTE
1/2" = 1'-0"



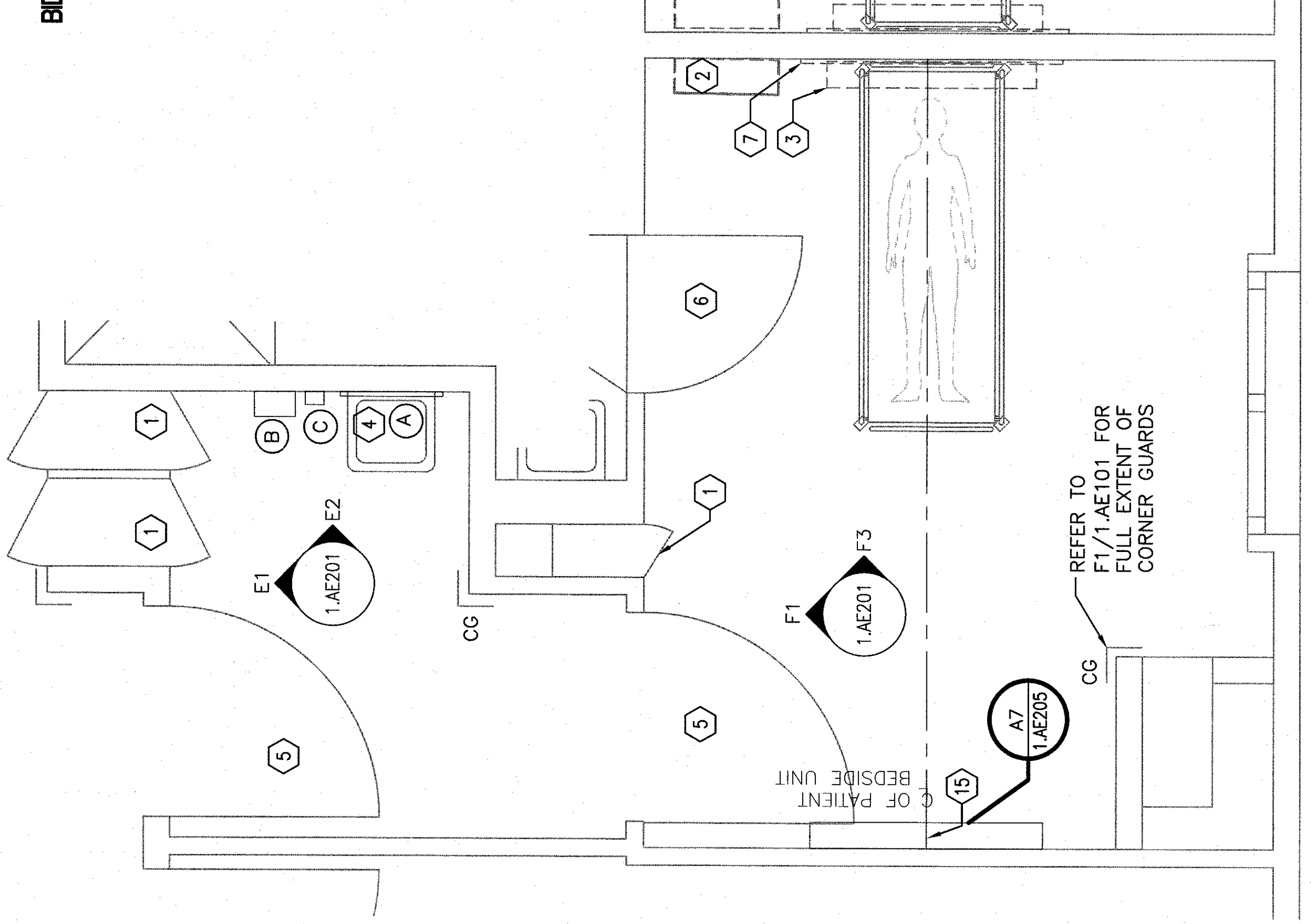
F1 TYPICAL ISO ROOM
1/2" = 1'-0"



E2 TYPICAL ANTE
1/2" = 1'-0"



F3 TYPICAL ISO ROOM
1/2" = 1'-0"



F6 TYPICAL ANTE AND ISO ROOM
1/2" = 1'-0"
(68-16, 68-17 OPP. 68-15A, 68-17A OPP.)

GENERAL INTERIOR ELEVATION NOTES

1. REFER TO SHEET 1.A101 FOR FLOOR FINISH PLAN.
2. REFER TO SHEET 1.AE01 FOR CASEWORK SECTIONS AND DETAILS.
3. REFER TO SHEET 1.AE01 FOR ROOM FINISH SCHEDULE AND FINISH LEGEND.
4. REFER TO 1.AE01 AND 1.A102 FOR PAINT INFORMATION.
5. REFER TO 1.AE101 FOR FULL EXTENT OF CORNER GUARD LOCATIONS.
6. INSTALL NEW VINYL BASE; REFER TO 1.AE601 FOR FINISH SCHEDULE.

KEY NOTES

1. ELECTROSTATICALLY REPAINT INTERIOR AND EXTERIOR OF EXISTING METAL WARDROBE AND NURSE SERVERS.
2. PATIENT BEDSIDE UNIT. REPLACE LAMINATE FACE COVER OF BEDSIDE UNIT TO MATCH PL-1. ALL OUTLETS AND DEVICES MOUNTED ON FACE TO BE REMOVED AND REINSTALLED IN SAME LOCATIONS.
3. NEW OVER BED LIGHT FIXTURE; REFER TO ELECTRICAL DRAWINGS.
4. INSTALL NEW VANITY LIGHT FIXTURE; REFER TO ELECTRICAL DRAWINGS.
5. PATCH, SAND, AND REFINISH EXISTING DOORS. INSTALL NEW LOW PEBBLE CS ACRYLIC KICK PLATE. CLEAN AND POLISH DOOR HARDWARE.
6. REFINISH EXISTING DOOR AND FRAME; REFER TO 1.AE601 FOR DETAILS. PROTECT HARDWARE.
7. INSTALL NEW 1/4" THICK SOLID SURFACE WALL PROTECTION PANELS; REFER TO 1.AE501 FOR DETAILS.
8. INSTALL NEW HANDRAIL; REFER TO 1.A501 FOR DETAILS.
9. FRAME: EF3654 - ALUMINUM METALLIC.
10. MARKERBOARD TILE: EMB1836M - 1-2
11. MARKER TRAY: EMT - 2 - ALUMINUM METALLIC
12. CLOCK TILE: EC32 - 4 - W8371T
13. TACKBOARD TILE: ETB1818 - 7 - ENC 11
14. INFECTION PREVENTION DISPENSER TILE: ECD - 8 - W8371T - ALUMINUM METALLIC
15. CHART/MAGAZINE HOLDER TILE: ECH - 5 - W8371T - ALUMINUM METALLIC
16. INSTALL NEW BUMPER; REFER TO 1.A501 FOR DETAILS.
17. INSTALL NEW WALL PROTECTION; REFER TO B3/1.A501 FOR DETAILS.
18. INSTALL SCONCE LIGHT FIXTURE.

BD ALTERNATE

BD ALTERNATE

BD ALTERNATE

BD ALTERNATE

MARK	TOILET ACCESSORIES SCHEDULE	ITEM	PROVIDED BY
A	MIRROR	RI	RI
B	SURFACE MOUNTED ROLL PAPER TOWEL DISPENSER	RI	RI
C	SOAP DISPENSER	RI	RI
D	STAINLESS STEEL TOILETRY SHELF	RI	RI
E	18" TOWEL BAR	RI	RI
F	SWING UP GRAB BAR W/ TOILET TISSUE HOLDER	RI	RI
G	30" GRAB BAR	RI	RI
H	36" GRAB BAR	RI	RI
I	SHOWER STALL GRAB BAR	RI	RI
J	RECESSED SOAP DISH	RI	RI
K	EXISTING ACCESSORIES TO BE REMOVED AND REINSTALLED.	RI	RI

GENERAL EQUIPMENT NOTES

1. V V ITEM: VA SUPPLIED & INSTALLED
2. VC ITEM: VA SUPPLIED & CONTRACTOR INSTALLED
3. CC ITEM: CONTRACTOR SUPPLIED & INSTALLED
4. RI ITEM: REINSTALL ITEM

LEGEND

- DETAIL INDICATOR
- DIMENSION LINE
- ELEVATION INDICATOR, EXTERIOR
- BUILDING SECTION INDICATOR
- KEYNOTE
- CORNER GUARD; REFER TO F3/1.A501 FOR DETAILS.

ARCHITECT/ENGINEERS:		PROJECT TITLE: A/E DESIGN RENOVATE 6B		PROJECT NUMBER: 594-12-605		OFFICE OF CONSTRUCTION AND FACILITIES MANAGEMENT	
DRAWING TITLE: ENLARGED PLANS AND ELEVATIONS DAY ROOM, CORRIDOR, ANTI, AND ISO ROOMS		LOCATION: WEST PALM BEACH VAMC 300 NORTH MILITARY TRAIL, PALM BEACH, FL 33406		BUILDING NUMBER: 1		DRAWING NUMBER: 1AE201	
APPROVED PROJECT DIRECTOR: <i>[Signature]</i>		DATE: 03-11-2018		CHECKED: BNG		DRAWN: JDM	
PARADIGM ENGINEERS AND CONSTRUCTORS 9 Oak Drive - Ocala, FL 34472 - PH: 523.338.511 - WWW.PARADIGMUSA.COM		REGISTERED PROFESSIONAL ENGINEER STATE OF FLORIDA No. 73896 J. VAN GEMBEKE		DATE: 03-11-2018		DRAWN: JDM	
REVISIONS:		DATE:		DATE:		DATE:	