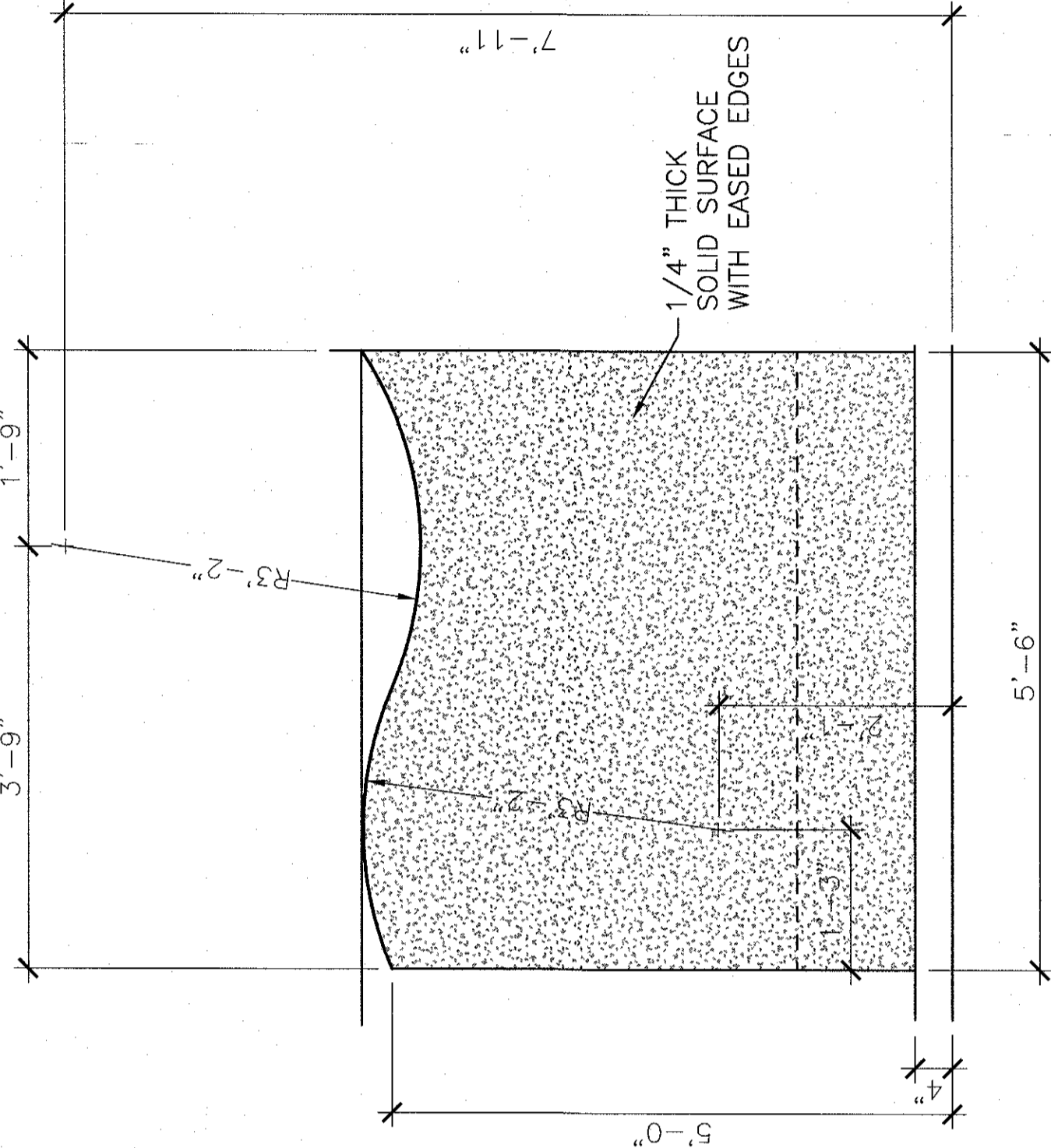


GENERAL NOTES

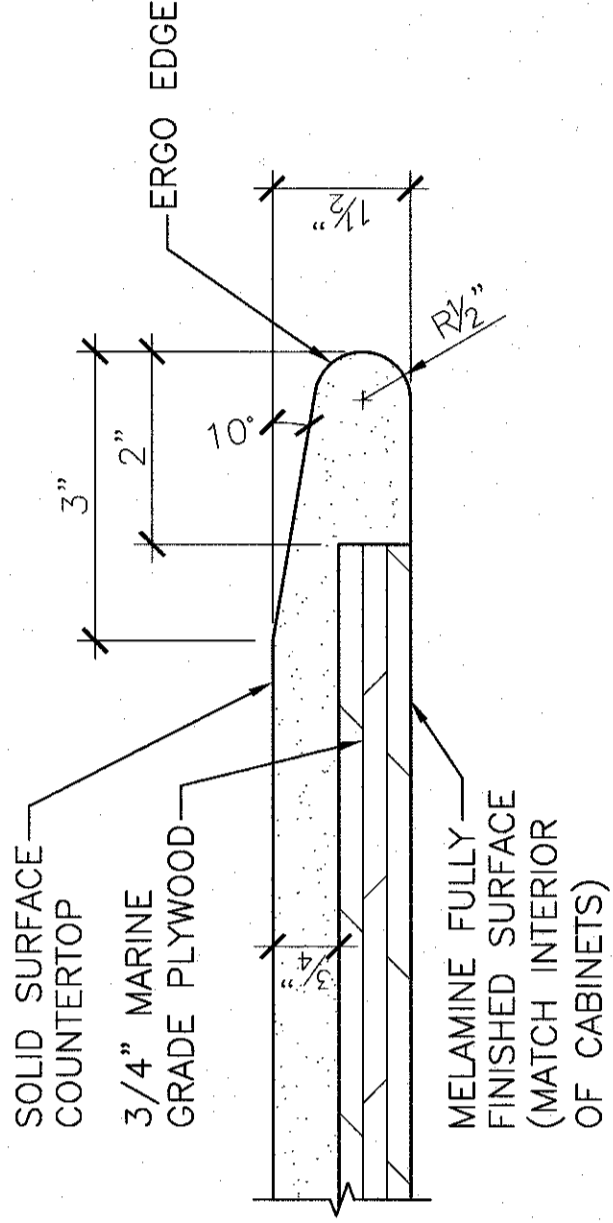
- ALL CABINET DOORS AND DRAWERS TO BE LOCKABLE. KEYING TO BE COORDINATED WITH CONTR.
- WHERE EXISTING EQUIPMENT IS LOCATED INSIDE OR NEXT TO NEW CASEWORK, CONFIRM EQUIPMENT SIZES BEFORE FABRICATION CASEWORK.
- GROMMETS TO BE PROVIDED IN RECEPTION DESK COUNTERTOP EVERY 4'-0" LF. COORDINATE FINAL LOCATIONS WITH CONTR.
- COORDINATE EXISTING DATA AND ELECTRICAL CONNECTIONS WITHIN RECEPTION DESK CASEWORK.
- ALL SURFACES SHALL BE FINISHED.

GENERAL EQUIPMENT NOTES

- VV ITEM: VA SUPPLIED & INSTALLED
- VC ITEM: VA SUPPLIED & CONTRACTOR INSTALLED
- CC ITEM: CONTRACTOR SUPPLIED & INSTALLED
- RI ITEM: RELOCATED EQUIPMENT

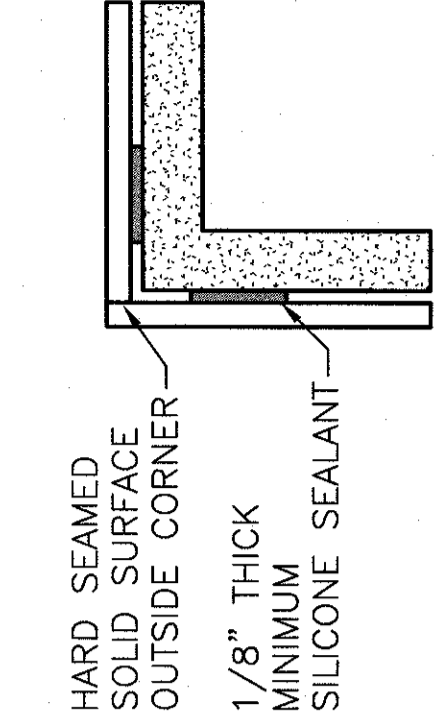
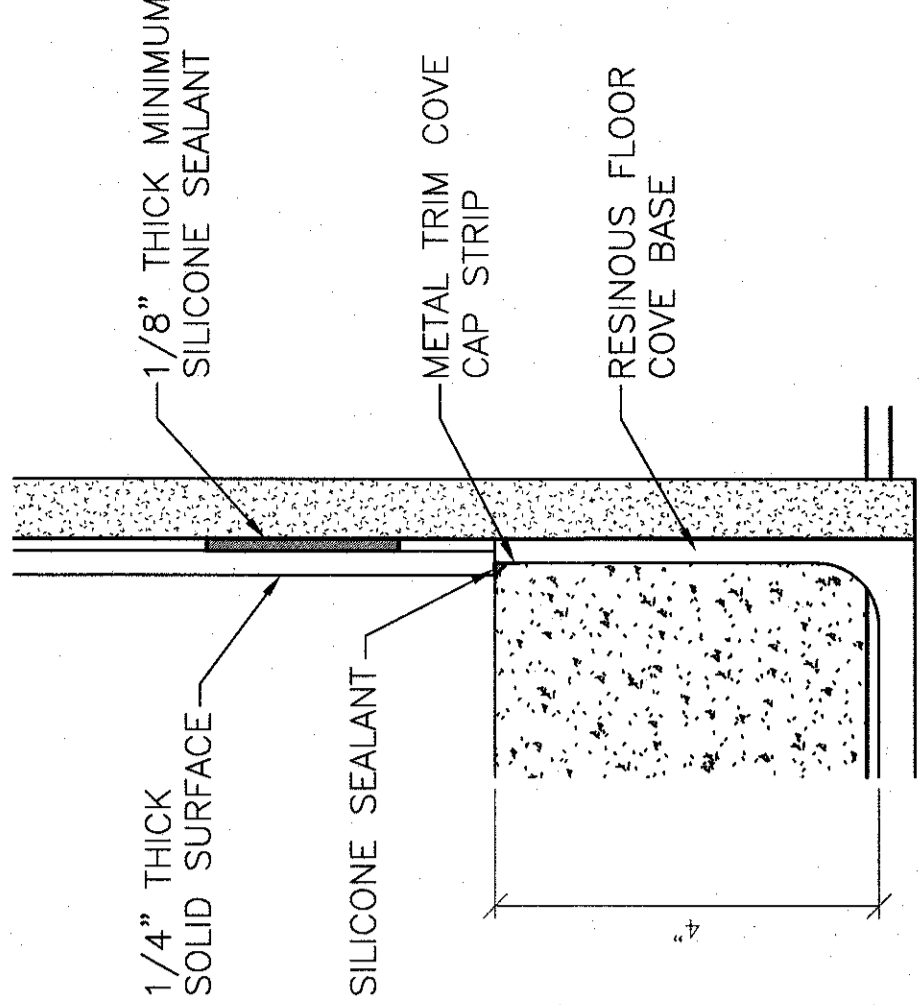


B6 SOLID SURFACE HEAD WALL DETAIL
SM. OPPOSITE HAND

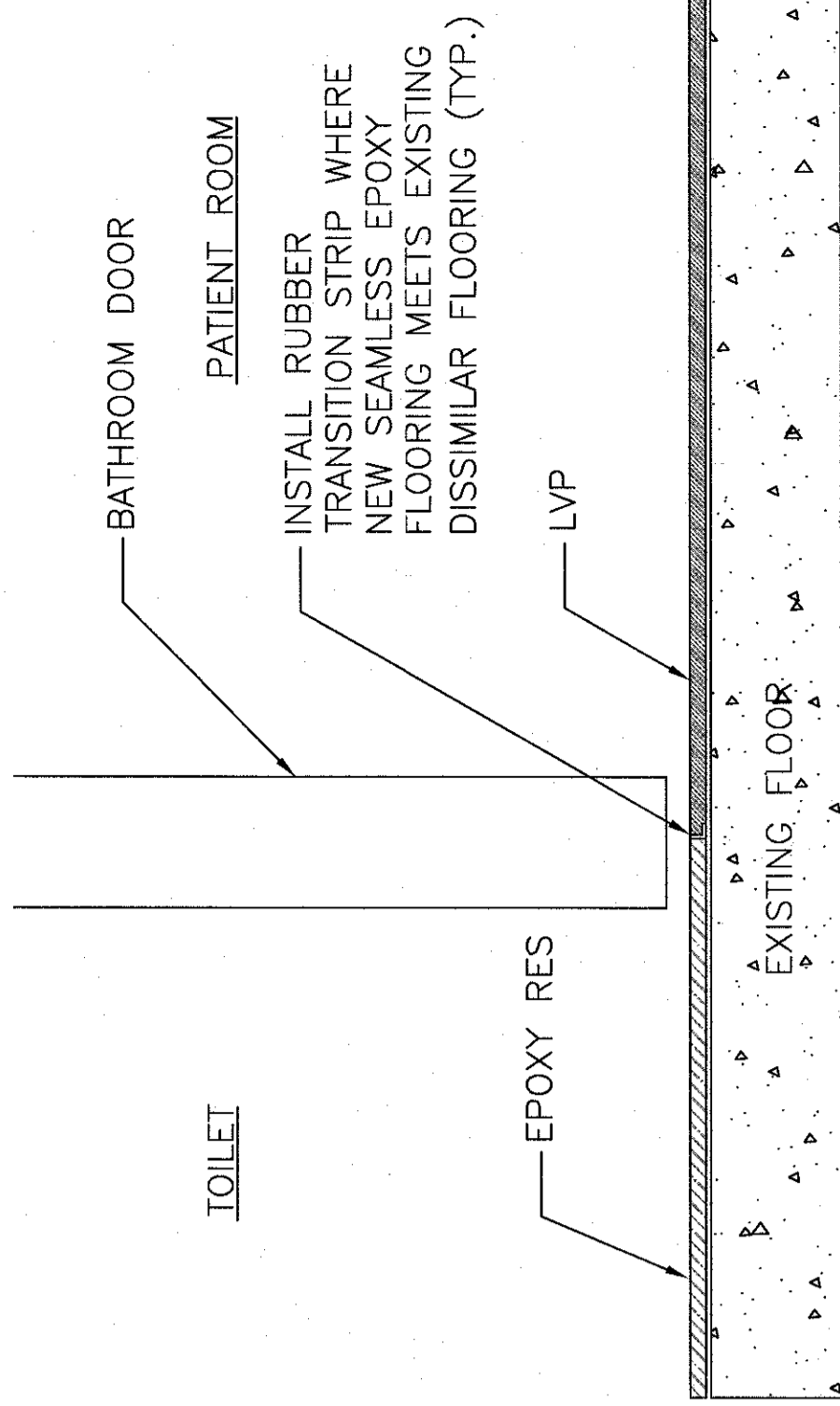


D6 TYPICAL ERGO EDGE DETAIL

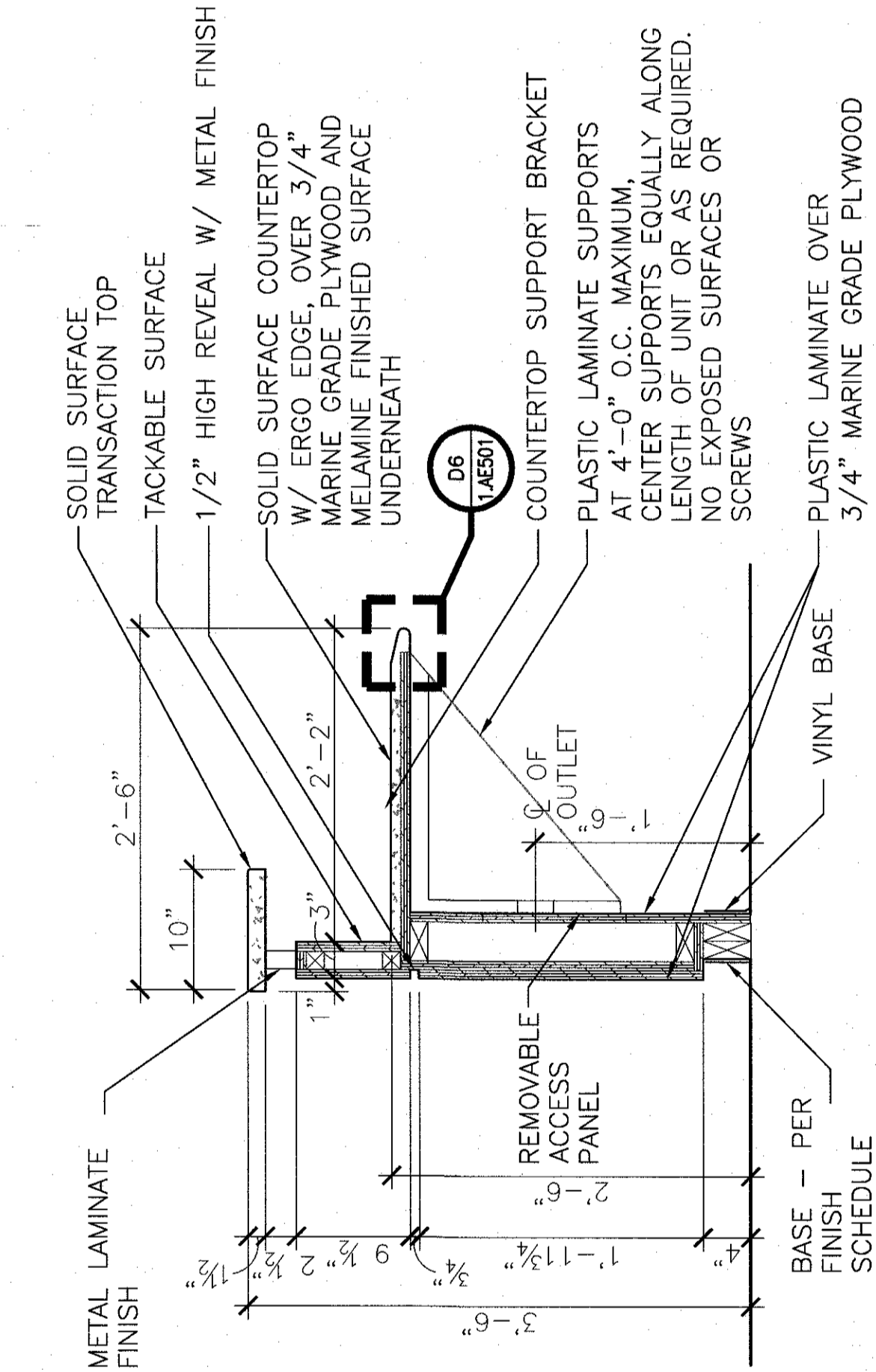
C8 W/C BATH COVE BASE DETAIL



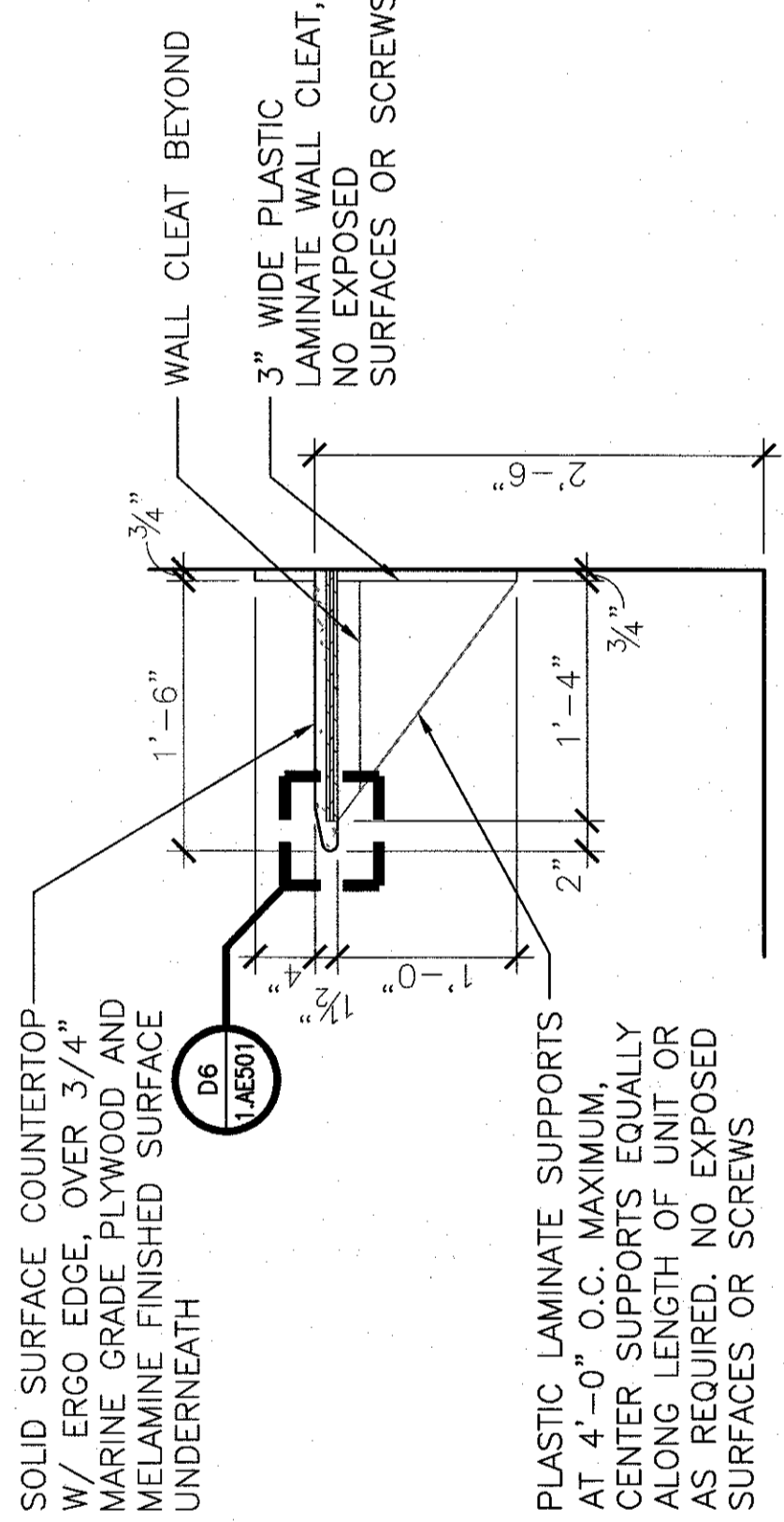
E8 SOLID SURFACE CORNER DETAILS



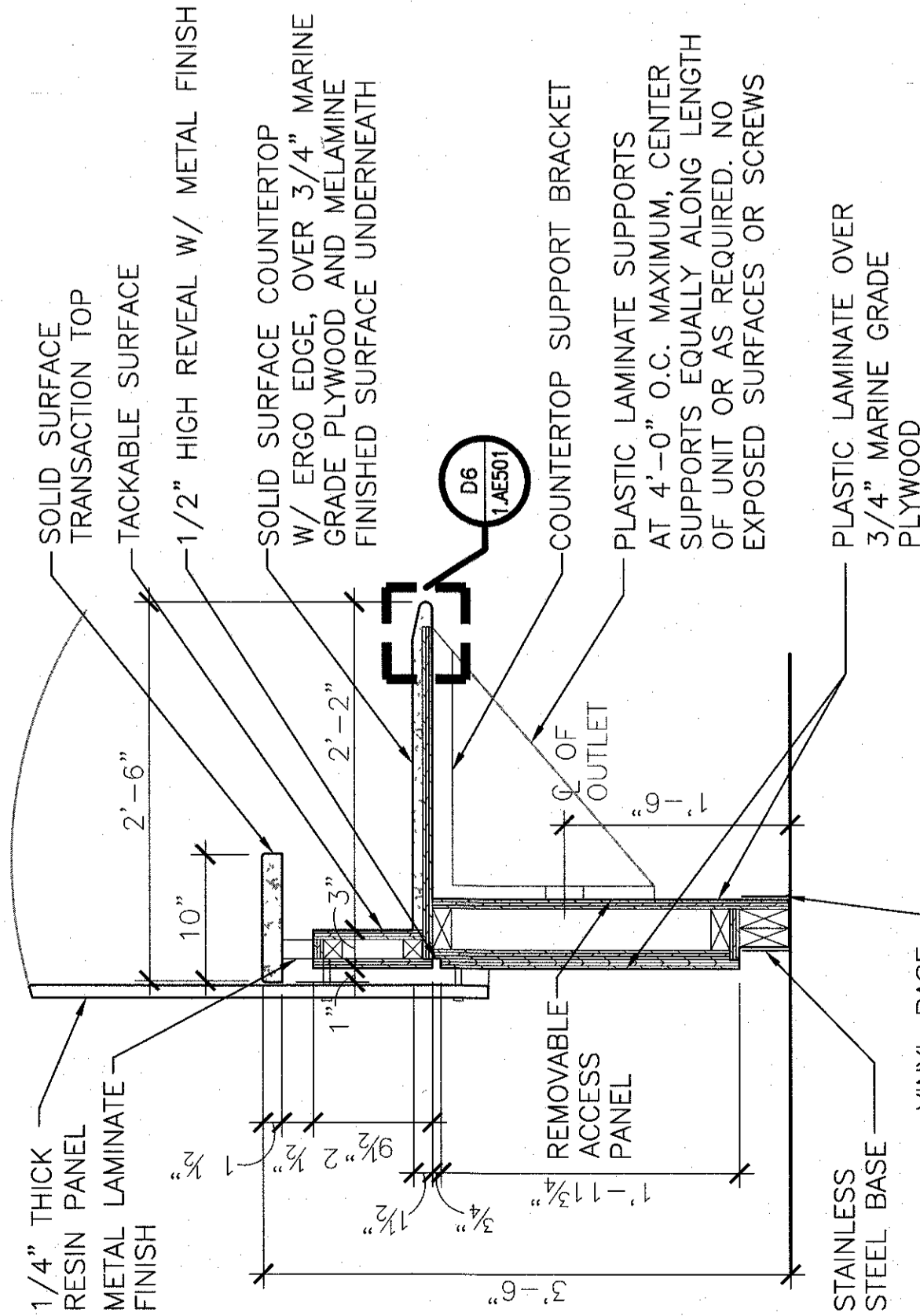
F8 EPOXY TO LVP TRANSITION



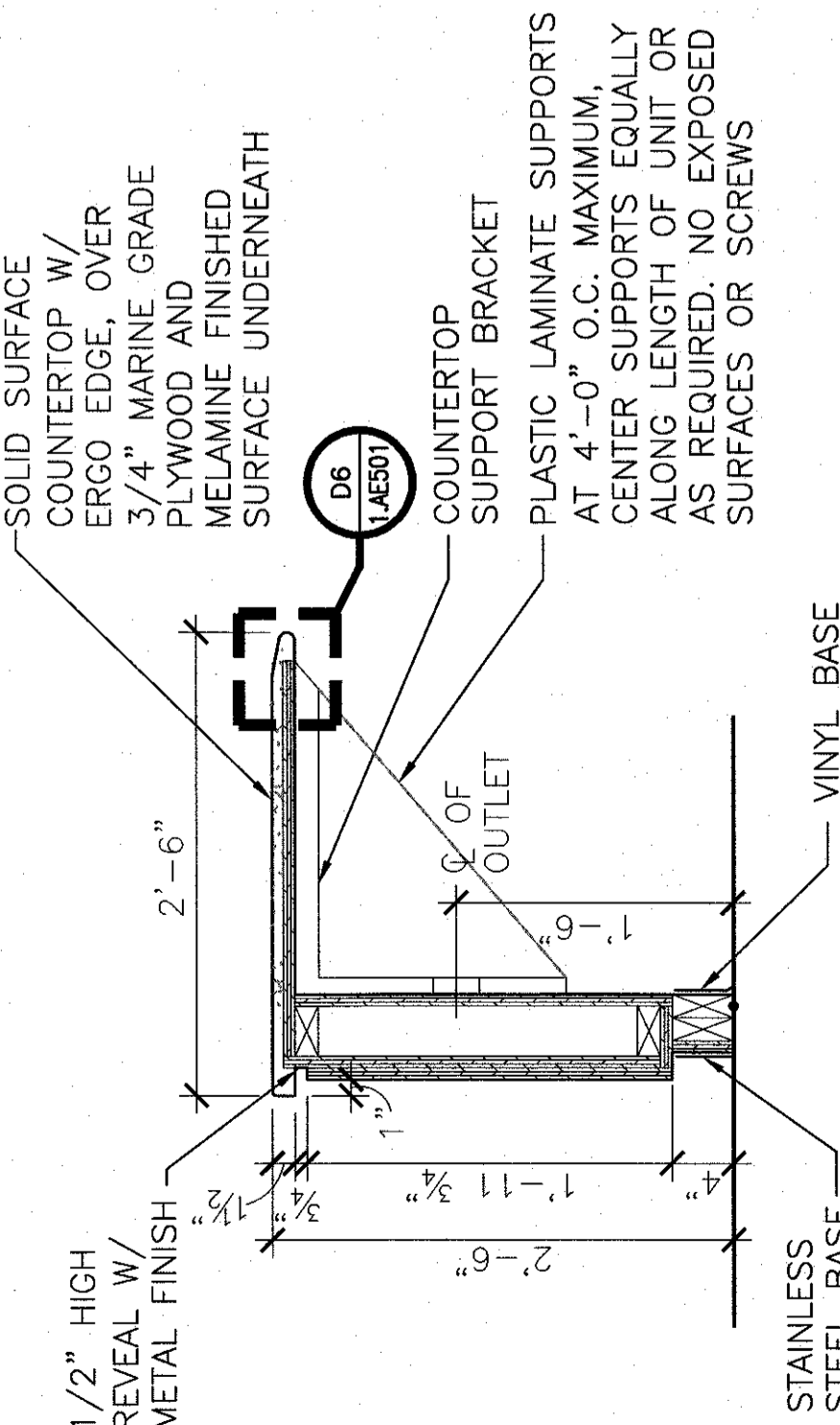
B3 NURSE STATION AND NURSE SUB STATION



D3 SIDE WALL COUNTER DETAIL

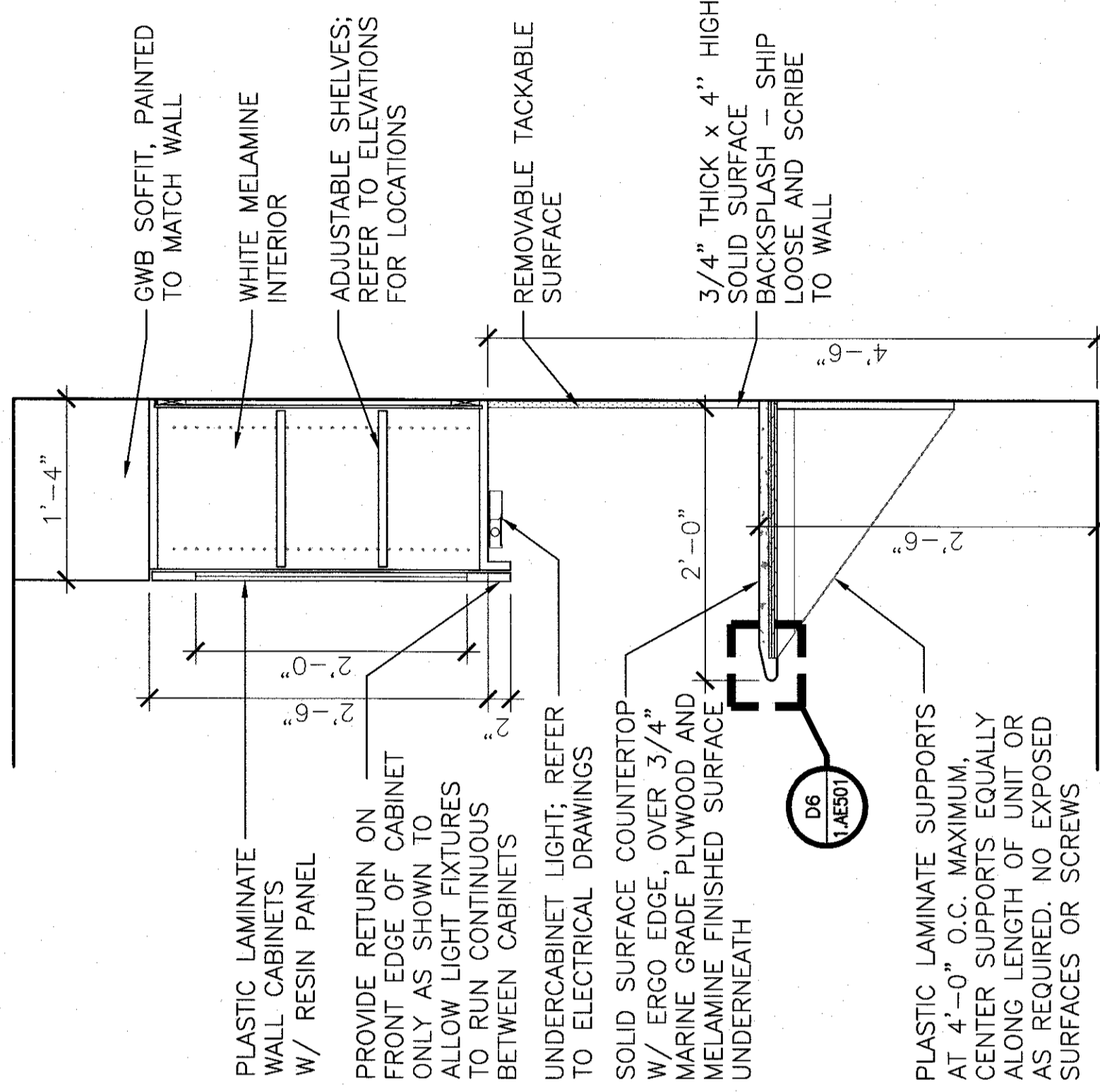


B1 NURSE STATION AND NURSE SUB STATION



D1 NURSE STATION AND NURSE SUB STATION

NOTE: PROVIDE CONTINUOUS FIRE RETARDANT TREATED WOOD BLOCKING IN GYPSUM BOARD WALLS FOR SUPPORT OF BASE & WALL CABINETS



F6 NURSE SUB STATION CASEWORK

FULLY SPRINKLERED BUILDING
FINAL CONSTRUCTION DOCUMENTS

ARCHITECT/ENGINEERS:		CASEWORK SECTIONS AND DETAILS		Project Title A/E DESIGN RENOVATE 6B		Project Number 594-12-605		Office of Construction and Facilities Management	
PARADIGM ENGINEERS AND CONSTRUCTORS		Approved Project Director		Location: WEST PALM BEACH VAMC 7505 NORTH MILITARY TRAIL, PALM BEACH GARDENS 33409-5400		Building Number 1		Drawing Number: 1AE501	
9 Oak Drive - Ocoee, FL 34472 - PH: 562-539-8511 - www.paradigmusa.com		Professional Engineer		Date: 03-11-2018		Checked BVG		Drawn JDM	
Revision		Date		Revision		Date		Revision	