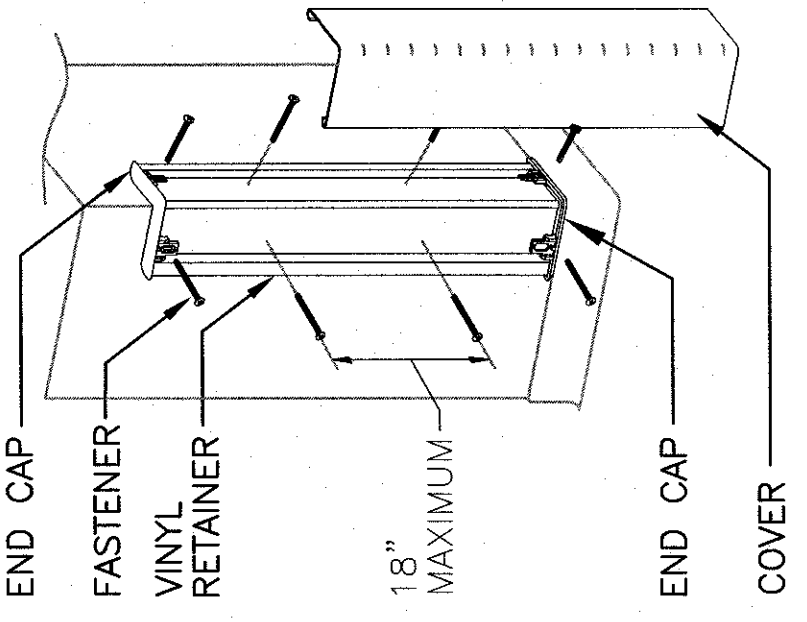
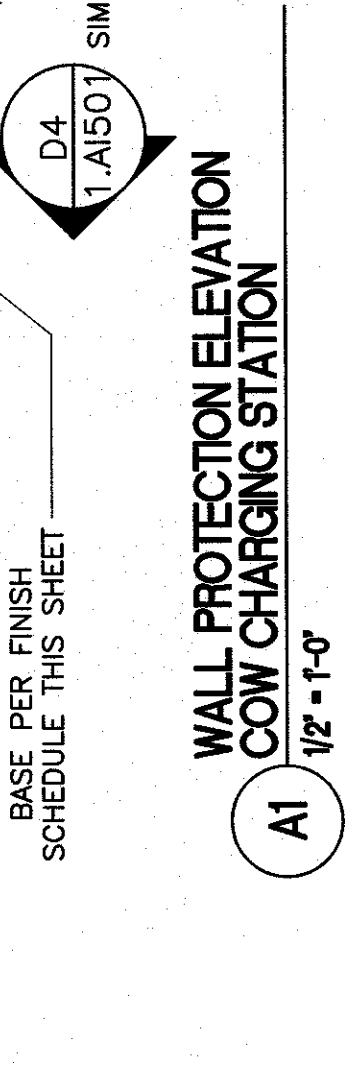
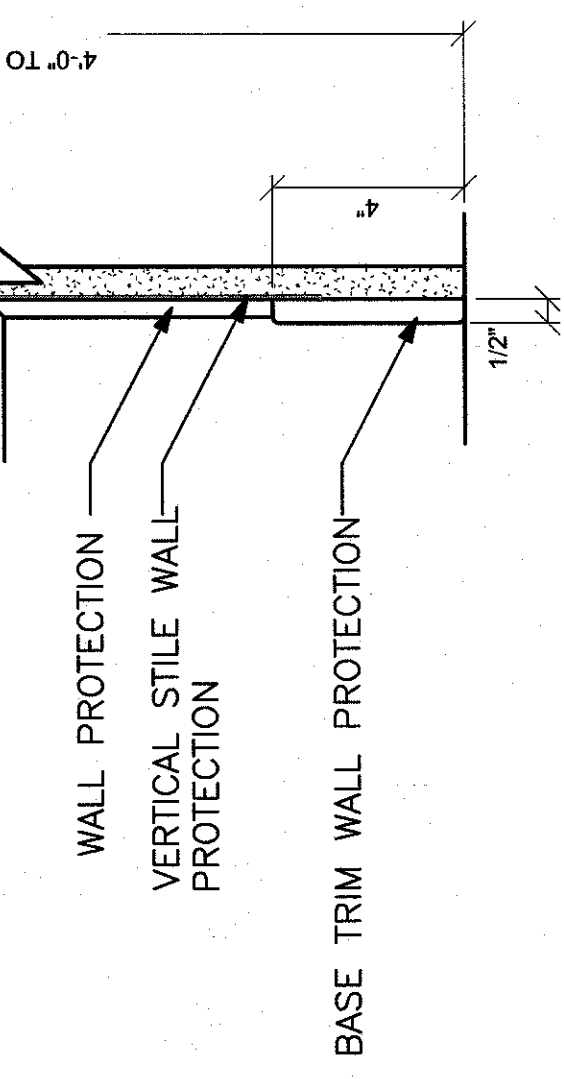
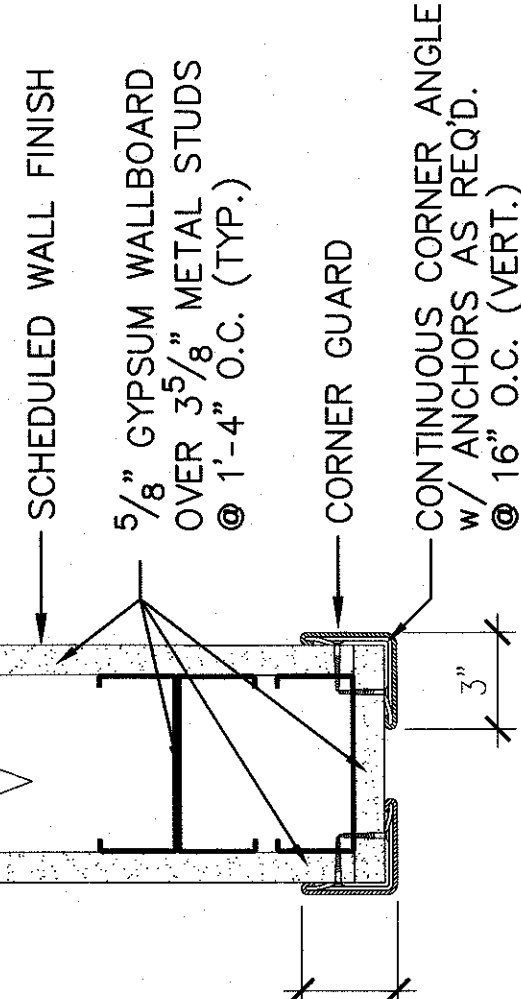
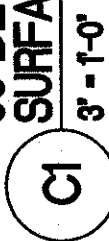
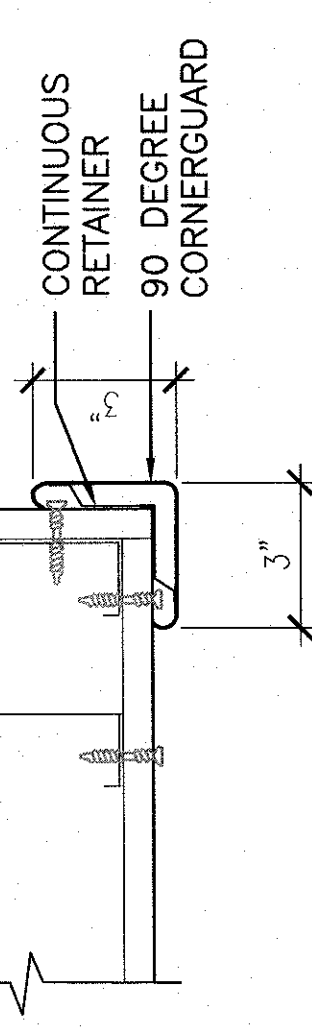
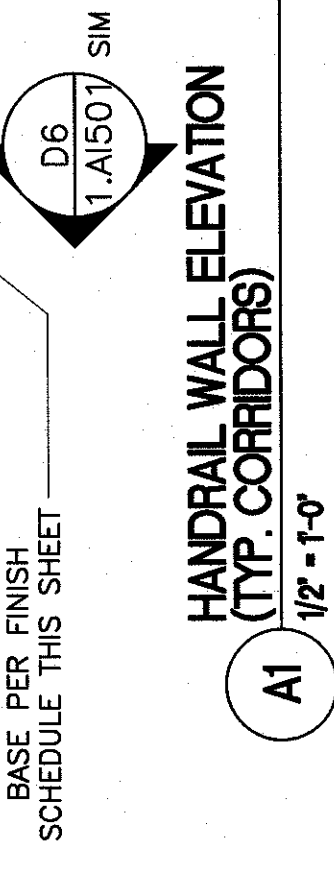
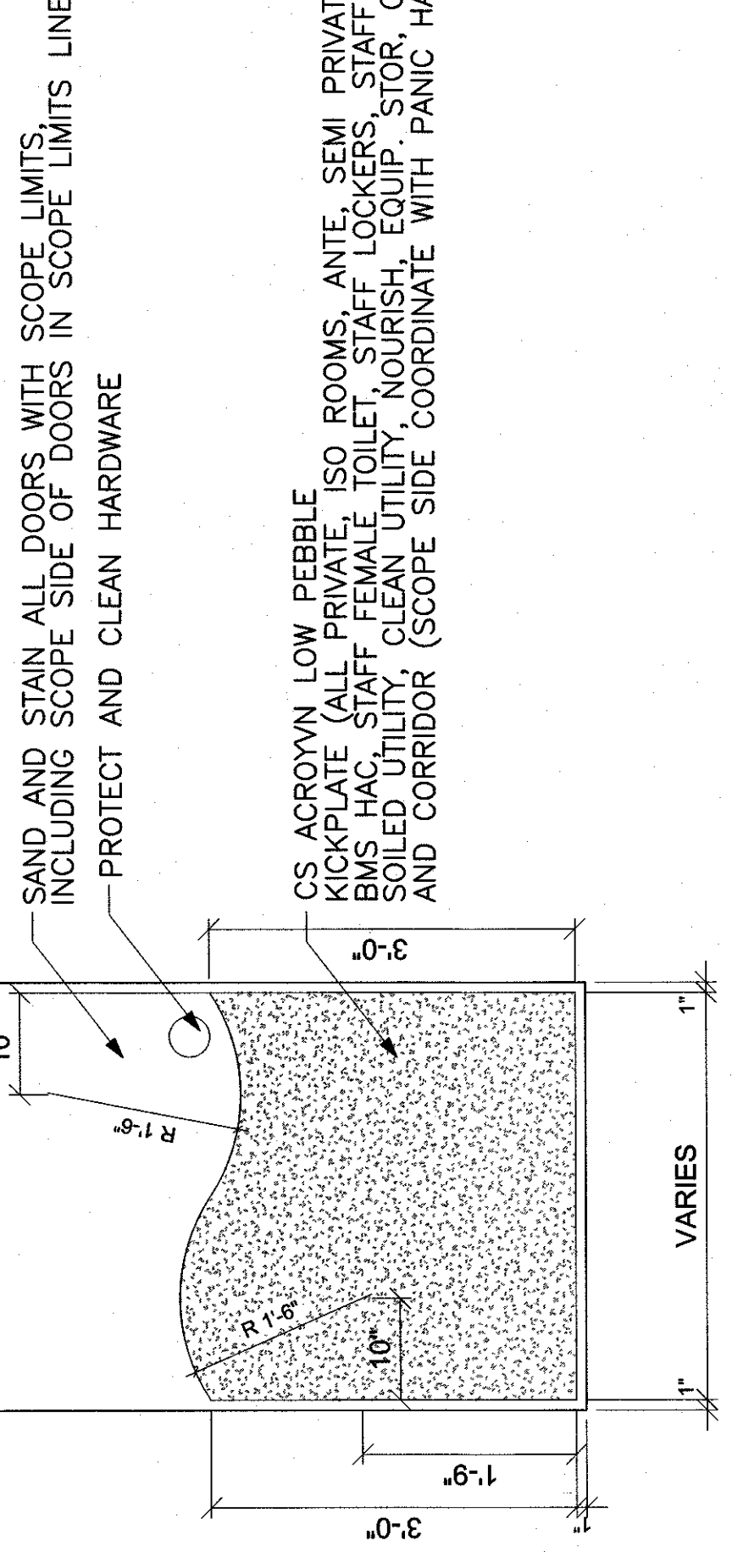


GENERAL INTERIOR ELEVATION NOTES

1. REFER TO SHEET 1-A101 FOR FLOOR FINISH PLAN.
2. REFER TO SHEET 1-A601 FOR FINISH SCHEDULE.
3. REFER TO SHEET 1-A103 FOR WALL PROTECTION PLAN.



- NOTES
1. INSTALL RETAINER (1/4" (6.4mm)) ABOVE COVER BASE OR FINISH FLOOR USING THE REQUIRED FASTENERS.
2. INSTALL THE BOTTOM END CAP BY ABUTTING THE CAP WITH THE END OF THE RETAINER, ALLOWING THE FLANGES TO OVERLAP THE END OF THE RETAINER AS WELL AS SECURE INTO POSITION USING THE SPECIFIED FASTENERS.
3. NOTE: TO CUT IN LOCATING THE END CAPS CORRECTLY, CUT A 4" (101.6MM) SECTION OF THE GUARD FROM SCRAP AND SNAP IT ON THE RETAINER. LOCATE THE CAP SO IT ALIGNS FLUSH WITH TOP AND BOTTOM OF THE GUARD.
4. REPEAT THE PROCEDURE TO INSTALL THE TOP END CAP.
5. FINISH INSTALLATION BY SNAPPING THE COVER ONTO THE RETAINER.
6. CORNER GUARD TO BE 7'-0" HIGH IN ALL CORRIDORS AND HIGH TRAFFIC PUBLIC AREAS.
7. COORDINATE WITH OWNER FOR SPECIFIC NEEDS AT EACH LOCATION.



- E2 SURFACE MOUNTED CORNER GUARD
(AS NOTED ON LAH03)**

