

Parking Summary :
124 - Total Parking Spaces Required

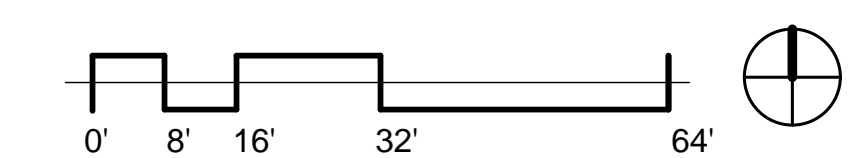
- 12 - Handicap Spaces
- 3 - Van Spaces
- 58 - Front Lot Spaces (Patient/Visitors)
- 51 - Side Lot Spaces (Staff)
- 124 - Total Shown
- *1 - Motorcycle Spaces

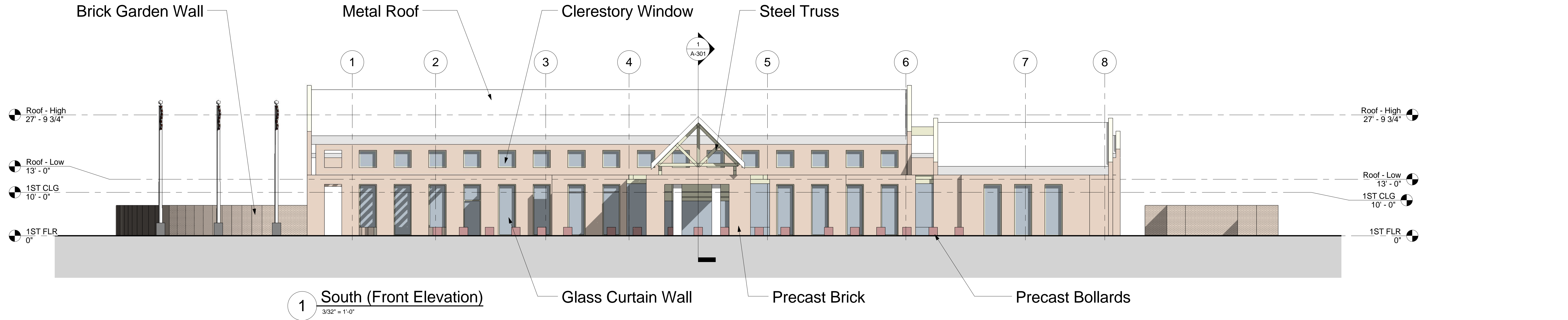
Keyed Notes

1. Bollards at flush curb
2. Staff entrance
3. Service entrance
4. Emergency egress
5. Trash / Recycle
6. Patient / visitor walkway
7. Flag poles
8. Landscaped rain garden traffic circle
9. Planting strip
10. Storm water management area
11. Patient / visitor parking
12. Staff parking
13. Motorcycle parking
14. Concrete walk
15. Mobile Tech Pad
16. Rooftop HVAC
17. Garden
18. Generator
19. Transformer

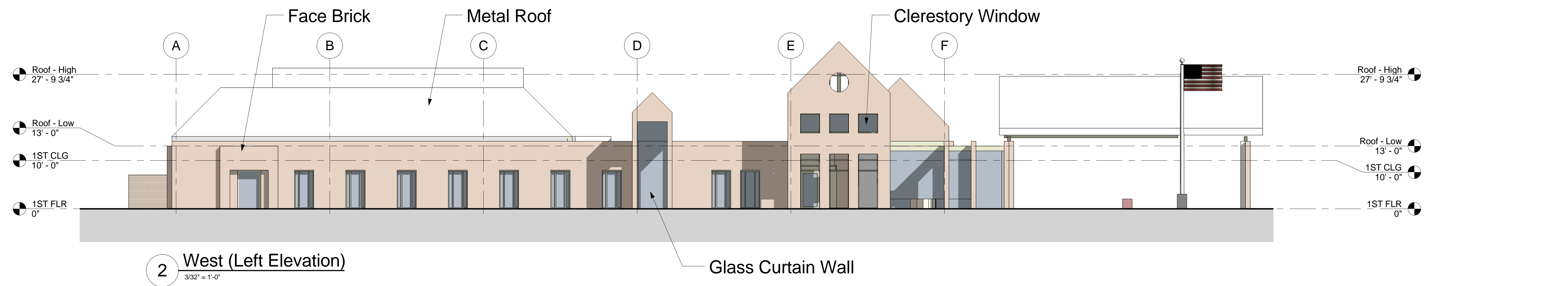
Site Plan General notes:

1. Site Plan shows a hypothetical parcel.
2. Standoff distance is 25' Minimum, per VA Physical Security Design Guide for Life Protected Facilities.
3. Provide video surveillance cameras and call boxes in parking areas per VA Physical Security Design Guide for Life Protected Facilities.
4. Provide signage per VA Signage Design Guide.
5. See VA Site Development Design manual for guidance on landscape design and stormwater management.
6. Right of way and entrance improvements per local jurisdiction codes and requirements.
7. Stormwater management & water quality per local jurisdiction codes and requirements.

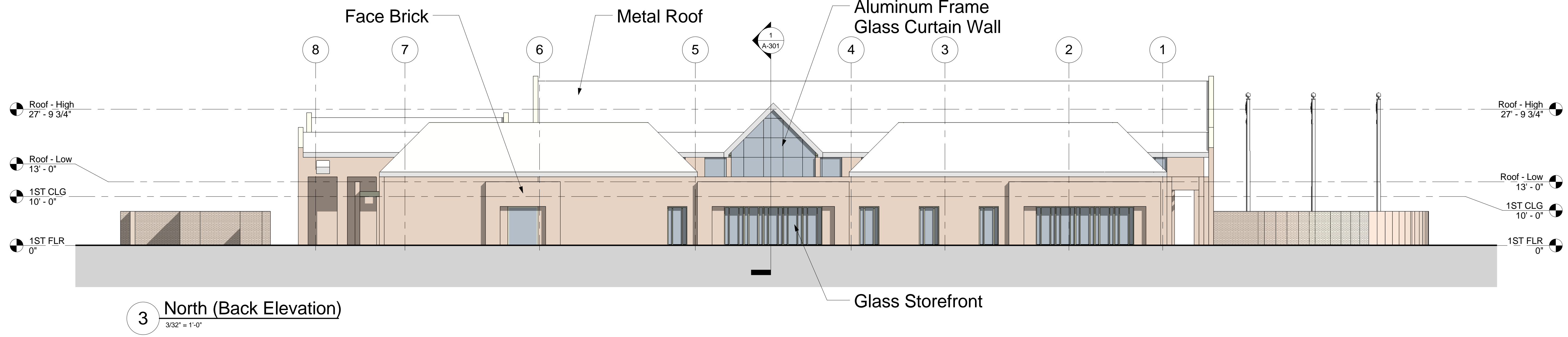




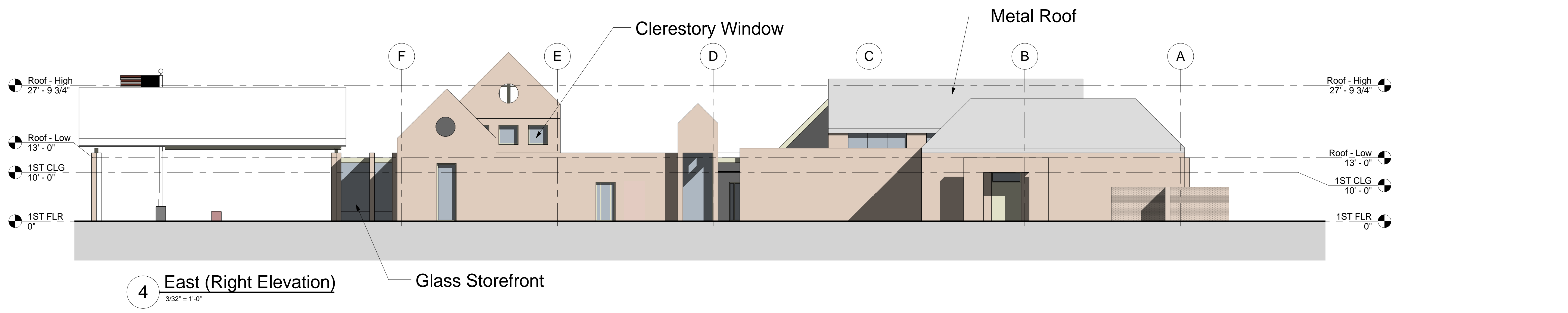
1 South (Front Elevation)
3/32" = 1'-0"



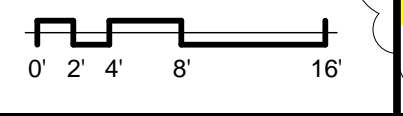
2 West (Left Elevation)
3/32" = 1'-0"

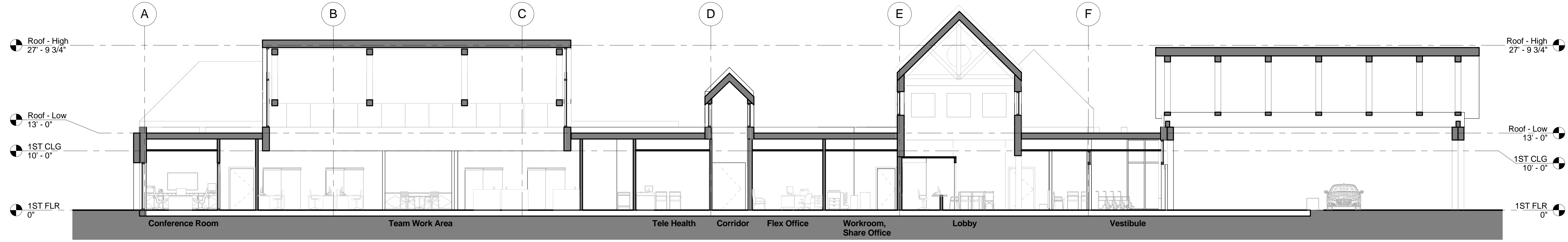


3 North (Back Elevation)
3/32" = 1'-0"

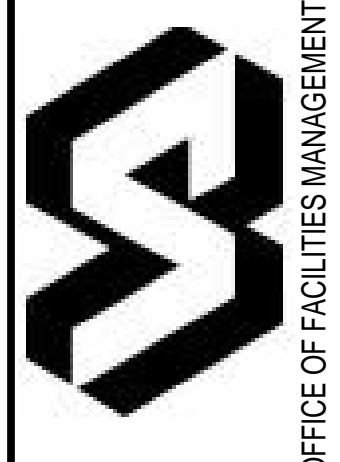


4 East (Right Elevation)
3/32" = 1'-0"





1 Section 1
1/8" = 1'-0"



VA Charlotte Hall CBOC, MD
Building Section

ERNEST BLAND ASSOCIATES P.C.
TECHNICAL FACILITY DESIGN

A-301

