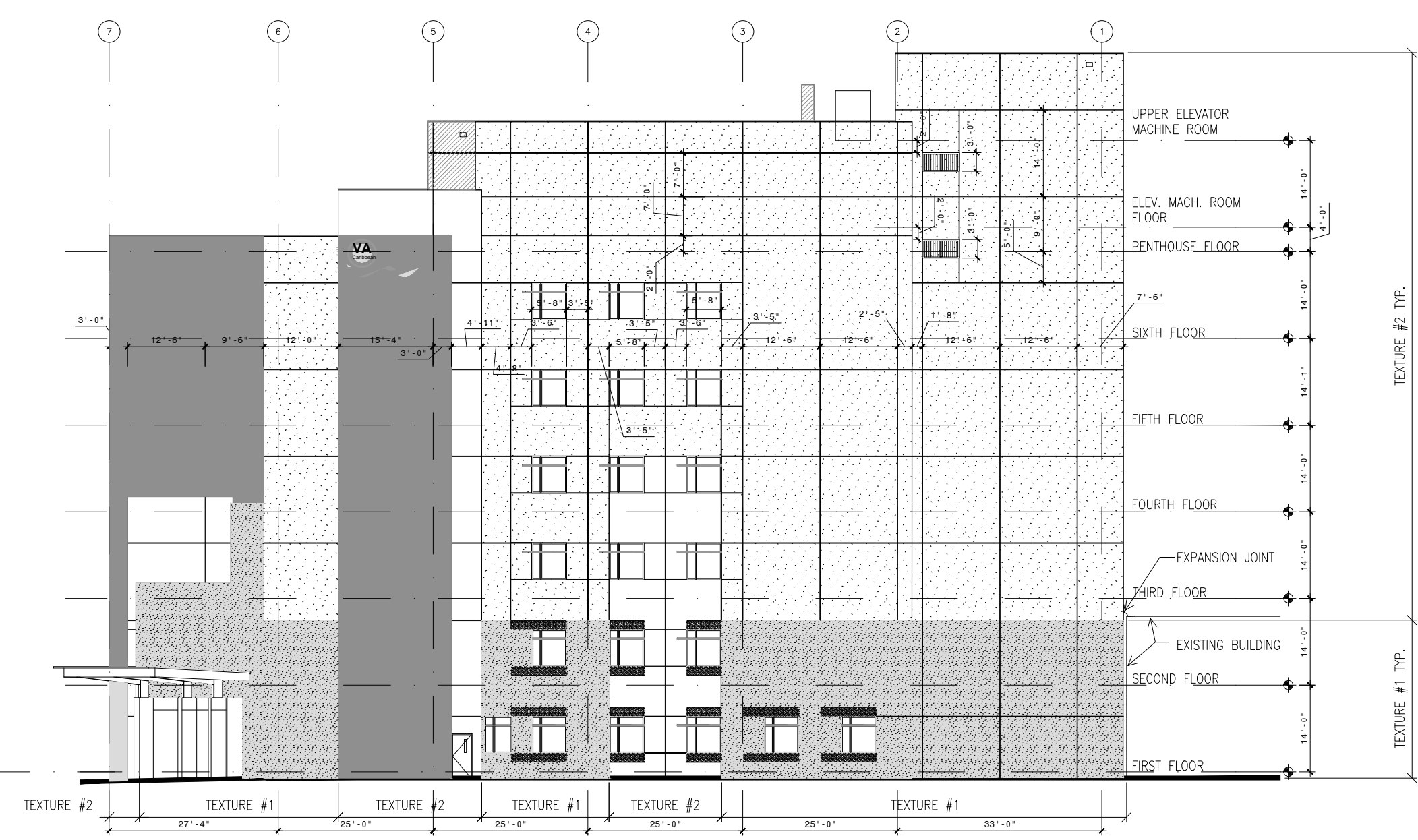


three inches = one foot
one and one half inches = one foot
one inch = one foot
three quarters inch = one foot
one half inch = one foot
three eighths inch = one foot
one quarter inch = one foot
one eighth inch = one foot



NORTH ELEVATION
SCALE: 1/16" = 1'-0"



EAST ELEVATION
SCALE: 1/16" = 1'-0"

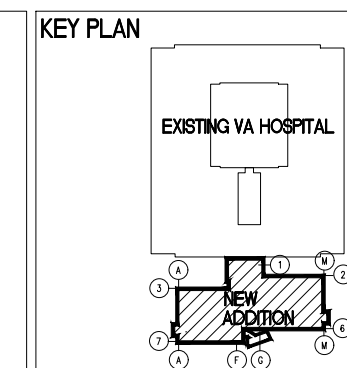


WEST ELEVATION
SCALE: 1/16" = 1'-0"



SOUTH ELEVATION
SCALE: 1/16" = 1'-0"

ISSUES	DATE



Project Title	STUCCO TEXTURE
Building No.	SOUTH BED TOWER
Location	SAN JUAN, PUERTO RICO

Project Title	VA HOSPITAL
Building No.	SOUTH BED TOWER
Location	SAN JUAN, PUERTO RICO
Project No.	672-16-912
Drawing No.	Of . Dwg. .

