

# **PART VI**

## **SCHEDULE E**

**PART VI: SCHEDULE E--ROOM FINISH, DOORS & HARDWARE**

<b>SECTION 1</b>	<b>ROOM FINISH, DOOR AND HARDWARE SCHEDULE--GENERAL.....</b>	<b>3</b>
1.1	ROOM FINISHES, DOOR AND HARDWARE SCHEDULE .....	3
1.1.1	USE OF SCHEDULE E .....	3
1.1.2	OTHER REQUIREMENTS.....	4
1.1.3	WALLCOVERING PROTECTIVE (WP), RIGID PVC SHEET .....	5
1.1.4	STAIRWAYS .....	<b>Error! Bookmark not defined.</b>
1.2	DOORS .....	5
1.2.1	DOORS .....	5
1.2.2	DOOR TYPES.....	6
1.2.3	DOOR SIZES .....	8
1.2.4	LEAD LINED DOORS AND FRAMES// .....	<b>Error! Bookmark not defined.</b>
1.3	FINISH HARDWARE.....	9
1.3.1	GENERAL .....	9
1.3.2	BUTT HINGES .....	9
1.3.3	CONTINUOUS HINGES .....	10
1.3.4	DOOR CLOSING DEVICES .....	11
1.3.5	DOOR STOPS .....	11
1.3.6	LOCKS AND LATCHES.....	11
1.3.7	PUSH-BUTTON COMBINATION LOCKS .....	12
1.3.8	ELECTROMAGNETIC LOCKS .....	12
1.3.9	CARD READERS.....	13
1.3.10	ELECTRIC STRIKES .....	13
1.3.11	KEYS.....	13
1.3.12	KEY CABINET .....	14
1.3.13	ARMOR PLATES, COMBINATION KICK-MOP PLATES AND DOOR EDGING .....	14
1.3.14	EXIT DEVICES .....	15
1.3.15	WEATHERSTRIPS (FOR EXTERIOR DOORS) .....	15
1.3.16	MISCELLANEOUS HARDWARE .....	15
1.3.17	PADLOCKS FOR VARIOUS DOORS, GATES AND HATCHES .....	16
1.3.18	HARDWARE SETS .....	16

**SECTION 2 SCHEDULE E**

**PART VI SCHEDULE E--ROOM FINISH, DOORS & HARDWARE****SECTION 1 ROOM FINISH, DOOR AND HARDWARE SCHEDULE--GENERAL**

Schedule E lists each type of space or room required in the outpatient clinic. The following information is listed for each space in the Schedule:

Department, Area and Function

Floor, Wall and Ceiling Finishes

Door Symbol and Hardware Set

If the Lessor believes that there are spaces or conditions not included in this Schedule, the question shall be referred to the Contracting Officer.

**1.1 ROOM FINISHES, DOOR AND HARDWARE SCHEDULE****1.1.1 USE OF SCHEDULE E**

**THE REQUIREMENTS IN THIS SCHEDULE APPLY TO ALL SPACES TO BE OCCUPIED BY VA IN THE OUTPATIENT CLINIC. LESSOR SHALL PROVIDE MATERIALS, FINISHES, DOORS, FRAMES, AND HARDWARE IN ACCORDANCE WITH THIS SCHEDULE AND THE REQUIREMENTS SPECIFIED IN THIS SFO.**

Lessor shall provide each space with door(s) of the type and size as listed in Schedule E with hardware as noted. Doors and hardware requirements are indicated by their respective door symbols and hardware set numbers in this Schedule. Additional requirements are defined in Paragraph 1.3, "Doors and Hardware".

The Lessor shall provide room finishes in each room in accordance with Schedule E. Finishes are shown in the schedule for the floor, base, wainscot, wall, and ceiling surfaces for each room or space. The following are abbreviations used for materials and codes throughout the room finishes, door, and hardware schedule. The Lessor shall coordinate abbreviations used in the construction documents prepared by the Lessor with the abbreviations and symbols used in this SFO.

ADO	Automatic Door Operator
AF	Access Flooring
AT	Acoustical Ceiling (Tile)
AT(SP)	Acoustical Ceiling (with Sprayed Plastic Finish)
AT(TG)	Acoustical Ceiling (with Tegular Edge)
AWP	Acoustical Wall Panel
BP	Brick Pavers (Unit Pavers)
BR	Brick (Unit Masonry)
C	Concrete
CMU	Concrete Masonry Units (Unit Masonry)
CP	Carpet (without Cushion Broadloom)
CPT	Carpet Tile

**SOLICITATION FOR OFFERS**

**COMMUNITY BASED OUTPATIENT CLINIC  
BRICK, NJ**

CT	Ceramic Tile (Floor, Base, and Wall)
EPY	Epoxy (Coatings)
EX	Existing
EXP	Exposed
GL	Glass (Glazing)
GWB	Gypsum Wallboard Systems
HW	Hardware Set (Finish or Builders Hardware)
MAT	Material
MC	Multi-Color Coating
NF	Natural Finish
NO	Number
P	Paint (Exterior, Interior, Transparent Finishes)
PC	Precast (Architectural Precast Concrete Panels)
PCP	Portland Cement Plaster
PFW	Polypropylene Fabric Wallcovering
PL	Plaster
PUT	Polyurethane
QT	Quarry Tile
RAF	Resilient Athletic Flooring
RB	Resilient Base (Rubber, Vinyl)
RF	Raised Rubber Flooring
RSF	Resilient Sheet Flooring
SC	High Build Glazed Coating (Special Coating)
SP	Special Faced
ST	Stone (Cast)
TT	Terrazzo Tile (Plastic Matrix)
VCT	Resilient Tile Flooring (Vinyl Composition Tile)
VP	Veneer Plaster
W	Wallcovering (Vinyl Coated Fabric)
WB	Wall Border
WD	Wood
WP	Wallcovering Protective (Rigid PVC Sheet)
WSF	Welded Seam Sheet Flooring

**1.1.2 OTHER REQUIREMENTS**

**A. Safety Glass**

There are two (2) types of safety glass that may be required in Interior Spaces; these are:

**B. Laminated Fire Glass shall be used in fire rated assemblies**

Tempered Glass ("T") shall be used in all other Observations Windows and Doors with vision panels, including side lights.

**C. Wall Protection at Drinking Fountains**

Provide vinyl wall covering behind Drinking Fountain Alcoves where wallboard or plaster finish occur at a minimum 50 inches wide (or terminating at the nearest inside corner). The vinyl wall covering shall go from base to ceiling.

**1.1.3 WALLCOVERING PROTECTIVE (WP), RIGID PVC SHEET**

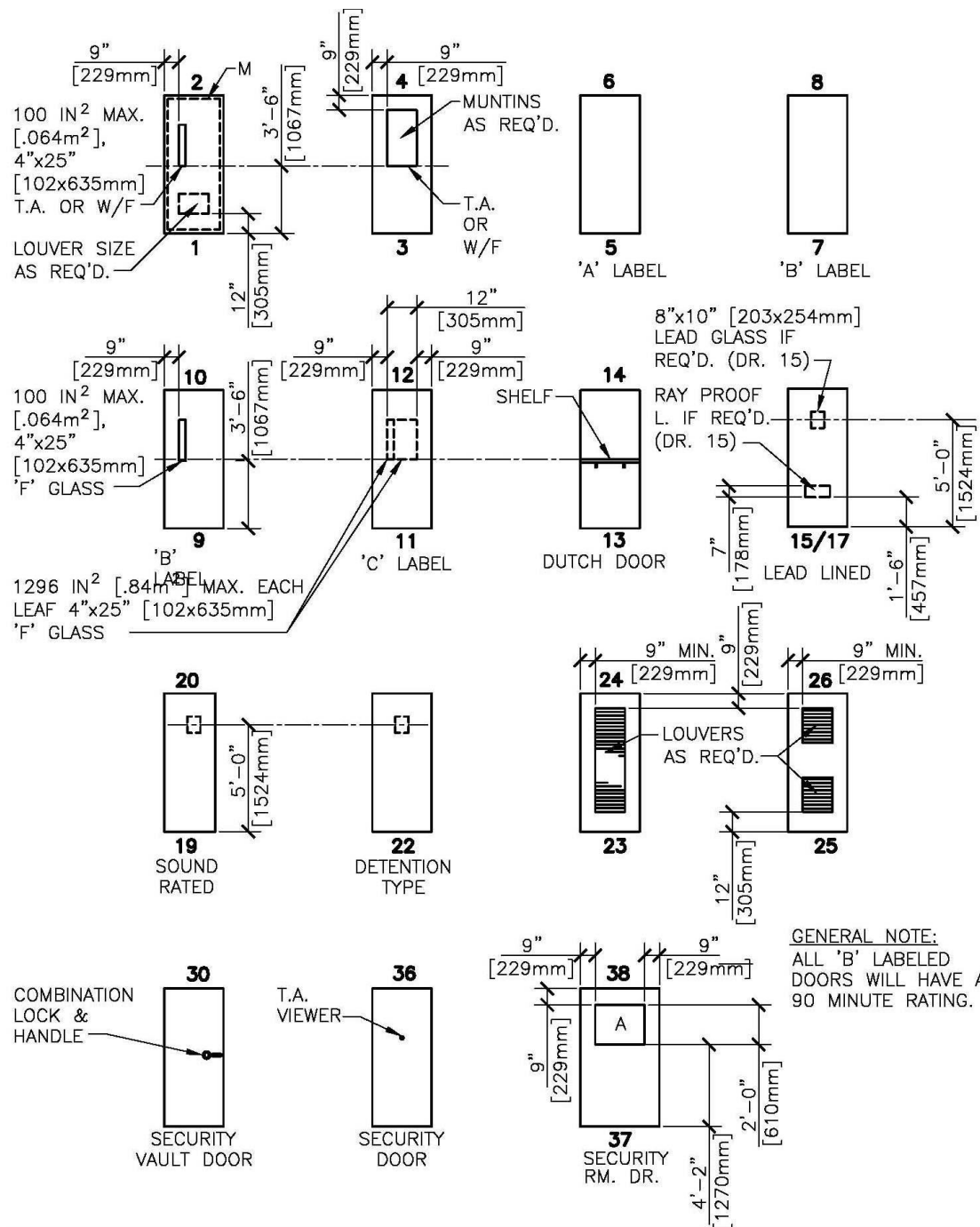
Install rigid PVC sheet wall protection at locations indicated in Schedule E over primed GWB substrate. Provide impact-resistant GWB under wallcovering of 0.060-inch or greater thickness. Do not seam within 24 inches of internal or external corners. Install covering before installation of bases, cabinets, hardware, or items attached to or spaced slightly from wall surface. Do not install covering more than 1/4 inch below top of resilient base. Terminate top of WP at combined handrail & chair rail.

**1.2 DOORS****1.2.1 DOORS**

The Door Symbol column in Schedule E identifies the type, size and special features of doors for use in a room or space. The number and letters used for the Door Symbol have the following meaning; the first number indicates door type and door material (odd nos. wood and even nos. steel), e.g., "1, 2, 4, etc.". The first letter (or letters) indicate door size e.g. "S, UU, V, etc." The letter after a dash (e.g., "-A") indicates a modification to a door. Use these symbols and designations at door openings on floor plan drawings.

For additional door requirements see Architectural Criteria in Sections 6 and 7 in Part I of the SFO.

Door Swing: Doors to Housekeeping Aids Closets (HAC) shall open out. HAC doors shall swing out 180° where possible.



Department of  
Veterans Affairs

DETAIL TITLE / DOOR SCHEDULE, LEGEND, NOTES  
AND MODIFICATIONS

<u>Z Door Type Schedule</u>				Hdware Set No.		
Mark	Description	Size			Notes	Room Type
Z1	Automatic Double Alum Doors, Single Slide	2-3'-0"w x 8'-0"		E1 8D		Main Entry

<u>General Door Notes</u>	
No.	Description
1	Verify Quantities with final design
2	Verify Door vision panels with final design
3	Provide laminated, fire rated or tempered safety glazing in vision panels to comply with VA standards and applicable codes.
4	Provide fire rated doors in openings in walls indicated to be fire rated in Schedule E and as required by applicable codes.
5	All doors and windows may not be used in a project.

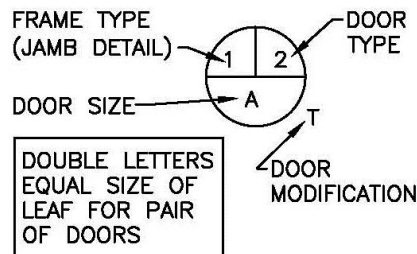
<u>Interior Window Type Schedule</u>	-						
Mark	Description	Size		Notes		Room type	
W1	Department Entry Sidelight	2'-0"w x 7'-0"		Fire Rated		Dept. Entrys	

## 1.2.3 DOOR SIZES

DOOR SIZES									
MK	WIDTH		HEIGHT		MK	WIDTH		HEIGHT	
	IN	[mm]	IN	[mm]		IN	[mm]	IN	[mm]
A	1'-6"	[457]	6'-8"	[2032]	N	2'-0"	[610]	7'-0"	[2134]
B	2'-0"	[610]	6'-8"	[2032]	O	2'-2"	[660]	7'-0"	[2134]
C	2'-2"	[660]	6'-8"	[2032]	P	2'-4"	[711]	7'-0"	[2134]
D	2'-4"	[711]	6'-8"	[2032]	Q	2'-6"	[762]	7'-0"	[2134]
E	2'-6"	[762]	6'-8"	[2032]	R	2'-8"	[813]	7'-0"	[2134]
F	2'-8"	[813]	6'-8"	[2032]	S	3'-0"	[914]	7'-0"	[2134]
G	2'-10"	[864]	6'-8"	[2032]	T	3'-4"	[1016]	7'-0"	[2134]
H	3'-0"	[914]	6'-8"	[2032]	U	3'-6"	[1067]	7'-0"	[2134]
I	3'-2"	[965]	6'-8"	[2032]	V	3'-8"	[1118]	7'-0"	[2134]
J	3'-4"	[1016]	6'-8"	[2032]	W	3'-10"	[1168]	7'-0"	[2134]
K	3'-8"	[1118]	6'-8"	[2032]	X	4'-0"	[1219]	7'-0"	[2134]
L	3'-10"	[1168]	6'-8"	[2032]	Y	3'-0"	[914]	8'-0"	[2438]
M	1'-6"	[457]	7'-8"	[2337]	Z	UNASSIGNED			

DOOR MODIFICATIONS

A LAMINATED GLASS  
 D DOUBLE GLAZED  
 TEMPERED GLASS  
 H ELECTRIC HOLD  
 L LOUVER  
 LP LIGHT PROOF LOUVER  
 M MECH. SEAL FOR LIGHT  
 PROOF & SOUND  
 RETARDING DOOR  
 T TEMPERED GLASS  
 U UNDERCUT 1" [25mm]  
 V LEAD GLASS  
 F FIRE RATED GLAZING

DOOR SYMBOLLEGEND (SEE ELEVATIONS)

[ ] GLASS OR LOUVER  
 [ ] REQUIRED BY  
 MODIFICATION  
 [ ] GLASS OR LOUVER  
 REQUIRED BY  
 ELEVATION TYPE

NOTES:

1. ALL DOORS SHALL BE FLUSH – 1 3/4" [44mm] THICK UNLESS NOTED OTHERWISE.
2. TOP & SIDE RAILS SHALL BE 9" [229mm] MIN. BOTTOM RAILS SHALL BE 12" MIN. [305mm].
3. DOOR TYPES 7, 8, & 9 SHALL NOT BE USED FOR OPPOSING DOORS.
4. EVEN NUMBERS ARE METAL; ODD NUMBERS ARE WOOD.



Department of  
Veterans Affairs

DETAIL TITLE / DOOR SCHEDULE



**1.3 FINISH HARDWARE****1.3.1 GENERAL****A. Hardware Set Numbers on Schedule**

Except for protective plates, door stops, mutes, thresholds and the like specified herein, hardware requirements for each door are indicated in the Room Finish and Door Schedule by numbers that correspond to the following hardware sets listed in this SFO.

**B. Manufacturers' Catalog Number References**

Where manufacturers' products are specified herein, products of other manufacturers which are considered equivalent to those specified may be used. Manufacturers whose products are specified are identified by abbreviations as follows:

Adams-Rite	Adams Rite Mfg. Co.	Glendale, CA
Glynn Johnson	Glynn Johnson Co.	Chicago, IL
LCN	LCN Closers	Princeton, IL
Firemark	Rixon-Firemark Co.	Chicago, IL
Hager	Hager Hinge Company	Saint Louis, MO
Stanley	The Stanley Works	New Britain, CT
Trimco	Triangle Brass Mfg. Co.	Los Angeles, CA
Unican	Simplex Security Systems	Collinsville, CT
Von Duprin	Von Duprin Hardware Co.	Indianapolis, IN
Zero	Zero Weather Stripping Co.	New York, NY

**C. Keying**

All cylinders shall be keyed into Grand Master Key System. Provide removable core cylinders that are removable only with a special key or tool without disassembly of knob or lockset. Cylinders shall be 7 pin type. Keying information shall be furnished at a later date by the Resident Engineer.

**1.3.2 BUTT HINGES****A. ANSI A156.1.**

The following types of butt hinges shall be used for the types of doors listed, except where otherwise specified:

*(1) Exterior Doors*

Type A2112 for doors 900 mm (3 feet) wide or less and Type A2111 for doors over 900 mm (3 feet) wide. Hinges for exterior doors shall have non-removable pins.

*(2) Interior Doors*

Type 8112 for doors 900 mm (3 feet) wide or less and Type A8111 for doors over 900 mm (3 feet) wide.

*(3) Automatic doors hung on butts*

Type A2111 for exterior doors and aluminum doors, and Type A8111 for other doors.

(4) *Labeled Wood Fire Doors*

Type 8411 or Type 8412; these hinges shall be thru bolted to door with hex nuts and bolts.

### 1.3.3 CONTINUOUS HINGES

#### A. ANSI/BHMA A156.26

Grade 1-600.

(1) *Listed under Category N in BHMA's "Certified Product Directory."*

#### B. General

Minimum 0.120-inch- (3.0-mm-) thick, hinge leaves with minimum overall width of 4 inches (102 mm); fabricated to full height of door and frame and to template screw locations; with components finished after milling and drilling are complete:

(1) *Fire Pins*

Steel pins to hold labeled fire doors in place if required by tested listing.

#### C. Continuous, Barrel-Type Hinges

Hinge with knuckles formed around a pin that extends entire length of hinge.

(1) *Base Metal for Exterior Hinges*

Stainless steel.

(2) *Base Metal for Interior Hinges*

Stainless steel or Steel.

(3) *Base Metal for Hinges for Fire-Rated Assemblies*

Stainless steel.

(4) *Manufacturers*

Hager Companies.

Markar Architectural Products, Inc.; a Subsidiary of Adams Rite Manufacturing Co.

McKinney Products Company; an ASSA ABLOY Group company.

Stanley Commercial Hardware; Division. of the Stanley Works and Zero International.

#### D. Continuous, Gear-Type Hinges

Extruded-aluminum, pinless, geared hinge leaves; joined by a continuous extruded-aluminum channel cap; with concealed, self-lubricating thrust bearings.

(1) *Manufacturers*

Bommer Industries, Inc.

Hager Companies.

McKinney Products Company; an ASSA ABLOY Group company.

Pemko Manufacturing Co.

Select Products Limited.

Zero International.

**1.3.4 DOOR CLOSING DEVICES**

Closing devices shall be products of one manufacturer for each type required.

The closer shall have 50 percent adjustable closing force over minimum value for that closer and have adjustable hydraulic back check effective between 60 degrees and 85 degrees of door opening.

Where specified, closer shall have hold-open feature.

Size Requirements: Size closers in accordance with manufacturer's recommendations or provide multi-size closers, sizes 1 through 6.

**1.3.5 DOOR STOPS**

A. Conform to ANSI A156.16.

B. Provide door stops wherever an opened door or any item of hardware thereon would strike a wall, column, equipment or other parts of building construction. For concrete, masonry or quarry tile construction, use lead expansion shields for mounting door stops.

C. Where cylindrical locks with turn pieces or pushbuttons occur, equip wall bumpers Type L02251 (rubber pads having concave face) to receive turn piece or button.

D. Substitute floor stops Type L02141 or L02161 as appropriate, when wall bumpers would not provide an effective door stop.

E. Where drywall partitions occur, use floor stops, Type L02141 or L02161.

F. Provide stop Type L02011 or L02181, as applicable for exterior doors.

G. Omit stops where floor mounted door holders are required and where automatic operated doors occur.

H. Provide appropriate roller bumper for each set of doors (except where closet doors occur) where two doors would interfere with each other in swinging.

I. Provide appropriate door mounted stop on doors in individual toilets where floor or wall mounted stops cannot be used.

J. Provide overhead surface applied stop Type C02541, ANSI A156.8 on patient toilet doors in bedrooms where toilet door could come in contact with the bedroom door.

K. Provide door stops on doors where combination closer magnetic holders are specified.

**1.3.6 LOCKS AND LATCHES**

A. Conform to ANSI A156.2. Locks and latches for doors 45 mm (1-3/4 inch) thick or over shall have beveled fronts. Lock cylinders shall have not less than seven pins. Cylinders for all locksets shall be removable core type. Cylinders shall be furnished with construction removable cores and construction master keys. Cylinder shall be removable by special key or tool. Construct all cores so that they will be interchangeable into the core housings of all mortise locks, rim locks, cylindrical locks, and any other type lock included in the Great Grand Master Key System. Disassembly of lever or lockset shall not be required to remove core from lockset. All locksets or latches on double doors with fire label shall have latch bolt with 19 mm

**Part VI: Schedule E – Room Finish, Door & Hardware -- Page 11 of 34**

(3/4 inch) throw. Provide temporary keying device or construction core of allow opening and closing during construction and prior to the installation of final cores.

B. In addition to above requirements, locks and latches shall comply with following requirements:

1. Mortise Lock and Latch Sets: Conform to ANSI/BHMA A156.13. Mortise locksets shall be series 1000, minimum Grade 2. All locksets and latchsets shall have lever handles similar to Falcon S-lever Design. Lever handle shall be fabricated from wrought stainless steel. No substitute lever design or material shall be accepted. All locks and latchsets shall be furnished with curved lip strike and wrought box. Furnish armored fronts for all mortise locks.

2. Auxiliary locks shall be as specified under hardware sets and conform to ANSI A156.5.

### 1.3.7 PUSH-BUTTON COMBINATION LOCKS

A. ANSI/BHMA A156.5, Grade 1. Mechanical or electrically operated as indicated.

B. Construction: Heavy duty cylindrical lock housing conforming to ANSI/BHMA A156.2, Grade 1. Lever handles and operating components in compliance with the UFAS and the ADA Accessibility Guidelines.

C. Special Features: Key override to permit a master keyed security system and a key activated passage feature to allow access without using the entry code.

D. Manufacturers:

1. Alarm Lock.
2. Code Locks, LLC
3. Locknetics; an Ingersoll Rand company.
4. Kaba Ilco.

### 1.3.8 ELECTROMAGNETIC LOCKS

#### A. ANSI/BHMA A156.23

Electrically powered, of strength and configuration indicated; with electromagnet attached to frame and armature plate attached to door. Listed under Category E in BHMA's "Certified Product Directory."

(1) *Type*

Full exterior or full interior, as required by application indicated.

(2) *Strength Ranking*

1500 lbf (6672 N).

(3) *Inductive Kickback Peak Voltage*

Not more than 0 V.

(4) *Residual Magnetism*

Not more than 0 lbf (0 N) to separate door from magnet.

**B. Manufacturers**

Door Controls International.

Doorguard Systems, Inc.

Dortronics Systems, Inc.

DynaLock Corp.

Locknetics; an Ingersoll-Rand Company.

Rutherford Controls Int'l. Corp.

SARGENT Manufacturing Company; an ASSA ABLOY Group company.

Securitron Magnalock Corporation; an ASSA ABLOY Group company.

Security Door Controls.

**1.3.9 CARD READERS**

Provide and install card readers where indicated in Hardware Sets and Schedule E. Integrate card readers with other specified systems and systems that are in place. Card Readers shall be PIV type

**1.3.10 ELECTRIC STRIKES**

A. ANSI/ BHMA A156.31 Grade 1.

B. General: Use fail-secure electric strikes with fire-rated devices.

C. Manufacturers:

1. Adams Rite Manufacturing Co.
2. Folger Adam Security Inc.; an ASSA ABLOY Group company.
3. HES, Inc.; an ASSA ABLOY Group company.
4. Locknetics; an Ingersoll-Rand Company.
5. Precision Hardware, Inc.
6. Von Duprin; an Ingersoll-Rand Company.

**1.3.11 KEYS**

A. Stamp all keys with change number and key set symbol. Furnish keys in quantities as follows:

Locks/Keys	Quantity
Cylinder locks	2 keys each
Cylinder lock change key blanks	100 each different key way
Master-keyed sets	6 keys each
Grand Master sets	6 keys each

Control key	1 key
-------------	-------

**1.3.12 KEY CABINET**

A. ANSI Standard A156.5. Provide key cabinet made of cold rolled, 1.2 mm (0.0478 inch) thick furniture steel electro-welded. Doors shall have "no sag" continuous brass-pin piano type hinge and be equipped with chrome plated locking door handles, hook cam and two parasentric keys. All locks shall be nickel plated with solid brass pin tumbler cylinder keyed as directed. Key Cabinet and Key Control System shall accommodate all keys for this project plus 25 percent.

B. Key tags shall consist of two sets: Permanent self-locking and loan key snaphook type with tag colors as follows: Red fiber marker of the permanent self-locking type approximately 32 mm (1-1/4 inch) in diameter engraved with the legend "FILE KEY MUST NOT BE LOANED." Also furnish for each hook a white cloverleaf key marker with snap-hooks engraved with the legend "LOAN KEY."

C. The manufacturer of the lock cylinders and locks shall attach a key tag to keys of each lock cylinder and shall mark thereon the respective item number and key change number. Provide each group of keys in a key gathering envelope (supplied by Key Cabinet Manufacturer) in which the lock manufacturer shall include the following information: Item number, key change number and door number. The contractor shall furnish the Key Cabinet Manufacturer the hardware and keying schedules and change keys.

D. The Key Cabinet Manufacturer shall set up a three-way cross index system, including master keys, listing the keys alphabetically, the hooks numerically and the key changes numerically on different colored index cards. Index cards shall be typewritten and inserted in a durable binder. Attach the keys to the two sets of numbered tags supplied with the cabinet. (The permanent tag and the loan key tag). Instruct the owner in proper use of the system. Install cabinet as directed by the Resident Engineer.

**1.3.13 ARMOR PLATES, COMBINATION KICK-MOP PLATES AND DOOR EDGING**

A. Conform to ANSI Standard A156.6.

B. Provide protective plates and door edging as specified below:

1. Kick-mop plates and armor plates plastic or metal, Type J100 series, color as required.
2. Provide kick-mop plates for both sides of each door, except where noted as not required. Kick-mop plates shall be 125 mm (5 inches) high. On push side of doors where jamb stop extends to floor, make combination kick-mop plates 38 mm (1-1/2 inches) less than width of door, except pairs of metal doors which shall have plates 25 mm (1 inch) less than width of each door. Extend all other combination kick-mop plates to within 6 mm (1/4 inch) of each edge of doors. Kick mop plates shall butt astragals. For jamb stop requirements, see specification sections pertaining to door frames.
3. Kick-mop plates are not required on following door sides:

- a) Armor plate side of doors;
  - b) Exterior side of exterior doors;
  - c) Closet side of closet doors;
  - d) Storage side of doors to or from storage spaces; and
  - e) Both sides of aluminum entrance doors.
4. Armor plates for doors are listed under "Hardware Sets". Armor plates shall be 875 mm (35 inches) high and 38 mm (1-1/2 inches) less than width of doors, except on pairs of metal doors. Plates on pairs of metal doors shall be 25 mm (1 inch) less than width of each door. Where top of intermediate rail of door is less than 875 mm (35 inches) from door bottom, extend armor plates to within 13 mm (1/2 inch) of top rail. On doors equipped with panic devices, extend armor plates to within 13 mm (1/2 inch) of panic bolt cross bar.
5. Where louver or grille occurs in lower portion of doors, substitute stretcher plate and kick-mop plate in place of armor plate. Size of stretcher plate and kick-mop plate shall be 125 mm (5 inches) high.

**1.3.14 EXIT DEVICES**

A. Conform to ANSI Standard A156.3. Exit devices shall be Grade 1; type and function are specified in hardware sets. Provide flush with finished floor strikes for vertical rod exit devices in interior of building. Trim shall have lever handles similar to locksets, unless otherwise specified.

B. Exit devices for fire doors shall comply with Underwriters Laboratories, Inc., requirements for Fire Exit Hardware. Submit proof of compliance.

**1.3.15 WEATHERSTRIPS (FOR EXTERIOR DOORS)**

Conform to ANSI A156.22. Air leakage shall not to exceed 0.50 CFM per foot of crack length (0.000774m<sup>3</sup>/s/m).

**1.3.16 MISCELLANEOUS HARDWARE**

A. Cylinders for Various Partitions and Doors: Key cylinders same as entrance doors of area in which partitions and door occur. Provide cylinders to operate locking devices where specified for following partitions and doors:

1. Folding doors and partitions.

- D. Mutes: Conform to ANSI A156.16. Provide door mutes or door silencers Type L03011, of white or light gray color, on each steel door frame, except lead-lined frames and frames for sound-resistant, lightproof and electromagnetically shielded doors. Furnish 3 mutes for single doors and 2 mutes for each pair of doors, except double-acting doors. Provide 4 mutes or silencers for frames for each Dutch type door. Provide 2 mutes for each edge of sliding door which would contact door frame.

**1.3.17 PADLOCKS FOR VARIOUS DOORS, GATES AND HATCHES**

A. ASTM E883, size 50 mm (2 inch) wide chain; furnish extended shackles as required by job conditions. Provide padlocks, with key cylinders, for each door in following areas as noted.

B. Key padlocks as follows:

1. Chain Link Fence Gates for Electrical Substation and other Fenced Buildings or Areas: Engineer's set, except as otherwise specified.

3. Roof Access and Scuttles: Engineer's set.

**1.3.18 HARDWARE SETS**

Following sets of hardware correspond to hardware numbers shown in Room Finish and Door Schedule. Where hardware set for a single door is specified for a pair of doors; equip each leaf of such pair of doors with set noted. Only those hardware sets that are referenced in the Schedule will be required. Disregard breaks in hardware set numbering sequence. Disregard hardware sets listed below but not shown in Schedule.

A. Following sets of hardware correspond to hardware symbols shown on drawings. Only those hardware sets that are shown on drawings will be required. Disregard hardware sets listed in specifications but not shown on drawings.

B. Hardware Consultant working on a project will be responsible for providing additional information regarding these hardware sets. The numbers shown in the following sets come from BHMA standards.

**ELECTRIC HARDWARE ABBREVIATIONS LEGEND:**

ADO = Automatic Door Operator

EMCH = Electro-Mechanical Closer-Holder

MHO = Magnetic Hold-Open (wall- or floor-mounted)



**INTERIOR SINGLE DOORS**HW-1FEach Door to Have:NON-RATED

1	Continuous Hinge	
1	Latchset	F04
1	Kick Plate	J102
1	Wall Stop	L02101 CONVEX
3	Silencers	L03011

HW-1LEach Door to Have:NON-RATED

1	Continuous Hinge	
1	Latchset	F04
1	Kick Plate	J102
1	Wall Stop	L02101 CONVEX
1	Threshold	J32300 x 57 MM WIDTH (2-1/4 INCHES)
1	Auto Door Bottom	R0Y346 - HEAVY DUTY
2	Sets Self-Adhesive Seals	R0Y154

HW-1QEach Door to Have:RATED/NON-RATED

1	Continuous Hinge	
1	Latchset	F04
1	Kick Plate	J102
1	Closer (@ rated doors)	C02011/C02021
1	Wall Stop	L02101 CONVEX
1	Threshold	J32300 x 57 MM WIDTH (2-1/4 INCHES)
1	Auto Door Bottom	R0Y346 - HEAVY DUTY
2	Sets Self-Adhesive Seals	R0Y154

HW-1SEach Door to Have:RATED/NON-RATED

1	Latchset	Mortise Lock
1	Ladder Pull	
1	Thumbturn with occupancy Sensor	
1	Adapter Sleeve	
1	Adjustable Strike Plate	
	Acoustical Bottom Track	

HW-2Each Door to Have:RATED/NON-RATED

	Hinges	QUANTITY & TYPE AS REQUIRED
1	Keyed Privacy Indicator Lock	F13 x OCCUPANCY INDICATOR
1	Closer	C02011/C02021
1	Kick Plate	J102
1	Mop Plate (@ Inswing Doors)	J103
1	Floor Stop	L02121 x 3 FASTENERS
1	Set Self-Adhesive Seals	R0Y154
	STONE THRESHOLD BY OTHER TRADES.	

HW-2CEach Door to Have:NON-RATED

	Hinges	QUANTITY & TYPE AS REQUIRED
1	Privacy Lock	F02-MOD X OCCUPANCY INDICATOR
1	Kick Plate	J102
1	Mop Plate (@ Inswing Doors)	J103
1	Wall Stop	L02101 CONVEX
3	Silencers	L03011
	STONE THRESHOLD BY OTHER TRADES.	

HW-2GEach Door to Have:RATED/NON-RATED

	Hinges	QUANTITY & TYPE AS REQUIRED
1	Keyed Privacy Indicator Lock	F13 x OCCUPANCY INDICATOR
1	Closer	C02011/C02021
1	Kick Plate	J102
1	Mop Plate (@ Inswing Doors)	J103
1	Floor Stop	L02121 x 3 FASTENERS
1	Auto Door Bottom	R0Y346 - HEAVY DUTY
2	Set Self-Adhesive Seals	R0Y154

STONE THRESHOLD BY OTHER TRADES.

HW-2JEach Door to Have:NON-RATED

	Hinges	QUANTITY & TYPE AS REQUIRED
1	Privacy Lock	F02-MOD X OCCUPANCY INDICATOR
1	Kick Plate	J102
1	Mop Plate (@ Inswing Doors)	J103
1	Wall Stop	L02101 CONVEX
1	Auto Door Bottom	R0Y346 - HEAVY DUTY
2	Set Self-Adhesive Seals	R0Y154

STONE THRESHOLD BY OTHER TRADES.

HW-3EEach Door to Have:NON-RATED

	Hinges	QUANTITY & TYPE AS REQUIRED
1	Office Lock	F04
1	Floor Stop	L02121 x 3 FASTENERS
1	Set Self-Adhesive Seals	R0Y154
1	Coat Hook	L03121

OMIT COAT HOOK WHERE GLASS LITE PREVENTS INSTALLATION.

HW-3FEach Door to Have:RATED/NON-RATED

1 Continuous Hinge	x INTEGRAL HINGE GUARD CHANNEL
	X ADJUSTA-SCREWS
1 Office Lock	F04
1 Closer	CO2011/CO2021
	@ RATED DOOR
1 Kick Plate	J102
1 Edge Guard (@ Wood Doors)	J208M / J211 (VERIFY), CUT: HARDWARE
1 Floor Stop	L02121 x 3 FASTENERS
1 Threshold	J32300 x 57 MM WIDTH (2-1/4 INCHES)
1 Auto Door Bottom	R0Y346 - HEAVY DUTY
2 Sets Self-Adhesive Seals	R0Y154

HW-3GEach Door to Have:NON-RATED

Hinges	QUANTITY & TYPE AS REQUIRED
1 Office Lock	F04
1 Floor Stop	L02121 x 3 FASTENERS
1 Coat Hook	L03121
1 Door Viewer (Mental Health Only)	L03221 - 190° (VIEW INTO CORRIDOR)
1 Threshold	J32300 x 57 MM WIDTH (2-1/4 INCHES)
1 Auto Door Bottom	R0Y346 - HEAVY DUTY
2 Sets Self-Adhesive Seals	R0Y154

OMIT VIEWER IF DOOR PROVIDED WITH VISION LITE.

OMIT COAT HOOK WHERE GLASS LITE PREVENTS INSTALLATION.

HW-4BEach Door to Have:NON-RATED/RATED

1	Continuous Hinge	
1	Public Restroom Lock	F09
1	Closer	C02011/C02021
1	Closer	CO2051/CO2061
1	Kick Plate	J102
1	Mop Plate (@ Inswing Doors)	J103
1	Floor Stop (@ Outswing Doors)	L02121 x 3 FASTENERS
1	Wall Stop (@ Inswing Doors)	L02101 CONVEX
1	Threshold	J32300 x 57 MM WIDTH (2-1/4 INCHES)
1	Auto Door Bottom	R0Y346 - HEAVY DUTY
2	Sets Self-Adhesive Seals	R0Y154

PROVIDE NON-HOLD-OPEN CLOSER AT TOILET ROOMS.

STONE THRESHOLD BY OTHER TRADES.

HW-4EEach Door to Have:NON-RATED/RATED

	Hinges	QUANTITY & TYPE AS REQUIRED
1	Utility Lock	F09
1	Closer (@ rated doors)	C02011/C02021
1	Closer (@ non-rated doors)	CO2051/CO2061
1	Kick Plate	J102
1	Floor Stop	L02121 x 3 FASTENERS
1	Threshold	J32300 x 57 MM WIDTH (2-1/4 INCHES)
1	Auto Door Bottom	R0Y346 - HEAVY DUTY
2	Sets Self-Adhesive Seals	R0Y154

HW-4GEach Door to Have:RATED/NON-RATED

	Hinges	QUANTITY & TYPE AS REQUIRED
1	Utility Lock	F09
1	Closer (@ Rated Doors)	C02011/C02021
1	Kick Plate	J102
1	Floor Stop	L02121 x 3 FASTENERS
1	Set Self-Adhesive Seals	R0Y154

HW-4JEach Door to Have:RATED/NON-RATED

	Hinges	QUANTITY & TYPE AS REQUIRED
1	Utility Lock	F09
1	Closer (@ Rated Doors)	C02011/C02021
1	Kick Plate	J102
1	Floor Stop	L02121 x 3 FASTENERS
1	Threshold	J32300 x 57 MM WIDTH (2-1/4 INCHES)
1	Auto Door Bottom	R0Y346 - HEAVY DUTY
2	Sets Self-Adhesive Seals	R0Y154

HW-4KEach Door to Have:NON-RATED

1	Continuous Hinge	x INTEGRAL HINGE GUARD CHANNEL X ADJUSTA-SCREWS
1	Utility Lock	F09
1	Armor Plate	J101 x 1.275 MM (0.050 INCH) THICKNESS
1	Edge Guard (@ Wood Doors)	J208M / J211 (VERIFY), CUT: HARDWARE
1	Floor Stop	L02121 x 3 FASTENERS
1	Set Self-Adhesive Seals	R0Y154

HW-4NEach Door to Have:RATED/NON-RATED

1	Continuous Hinge	x INTEGRAL HINGE GUARD CHANNEL X ADJUSTA-SCREWS
1	Utility Lock	F09
1	Closer (@ rated doors)	C02011/C02021
1	Kick Plate	J102
1	Edge Guard (@ Wood Doors)	J208M / J211 (VERIFY), CUT: HARDWARE
1	Floor Stop	L02121 x 3 FASTENERS
1	Threshold	J32300 x 57 MM WIDTH (2-1/4 INCHES)
1	Auto Door Bottom	R0Y346 - HEAVY DUTY
2	Sets Self-Adhesive Seals	R0Y154

HW-4QEach Door to Have:NON-RATED

1	Pivot Set	C07162 x 454KG (1000 LBS) WEIGHT CAPACITY
1	Intermediate Pivot	C07311
1	Utility Hospital Lock	F09 x LEAD-LINED x PADDLES POINTING DOWN
1	Armor Plate	J101 x 1.275 MM (0.050 INCH) THICKNESS
2	Edge Guard (@ Wood Doors)	J208M / J211 (VERIFY), CUT: HARDWARE
1	Overhead Stop	C01541-ADJUSTABLE
1	Set Self-Adhesive Seal	R0Y154

HW-4UEach Door to Have:NON-RATED/RATED

1	Continuous Hinge	
1	Public Restroom Lock	F09
1	Closer	C02011/C02021
1	Closer	CO2051/CO2061
1	Kick Plate	J102
1	Mop Plate (@ Inswing Doors)	J103
1	Floor Stop (@ Outswing Doors)	L02121 x 3 FASTENERS
1	Wall Stop (@ Inswing Doors)	L02101 CONVEX
1	Set Self-Adhesive Seals	R0Y154

PROVIDE NON-HOLD-OPEN CLOSER AT TOILET ROOMS.

STONE THRESHOLD BY OTHER TRADES.

HW-5BEach Door to Have:RATED

1	Continuous Hinge	x INTEGRAL HINGE GUARD CHANNEL X ADJUSTA-SCREWS
1	Storeroom Lock	F07
1	Closer	C02011/C02021
1	Armor Plate	J101 x 1.275 MM (0.050 INCH) THICKNESS
1	Edge Guard (@ Wood Doors)	J208M / J211 (VERIFY), CUT: HARDWARE
1	Floor Stop	L02121 x 3 FASTENERS
1	Set Self-Adhesive Seals	R0Y154

HW-5DEach Door to Have:NON-RATED

	Hinges	QUANTITY & TYPE AS REQUIRED
1	Storeroom Lock	F07
1	Kick Plate	J102 (@ STORAGE, EVM, & HAC ROOMS ONLY)
1	Floor Stop (@ Inswing Doors)	L02121 x 3 FASTENERS
1	Wall Stop (@ Outswing Doors)	L02101 CONVEX
3	Silencers	L03011

**Part VI: Schedule E – Room Finish, Door & Hardware -- Page 24 of 34**



HW-5GEach Door to Have:NON-RATED

	Hinges	QUANTITY & TYPE AS REQUIRED
1	Storeroom Lock	F07
1	Kick Plate	J102
1	Floor Stop	L02121 x 3 FASTENERS
1	Threshold	J32300 x 57 MM WIDTH (2-1/4 INCHES)
1	Auto Door Bottom	R0Y346 - HEAVY DUTY
2	Sets Self-Adhesive Seals	R0Y154

HW-6CEach Door to Have:NON-RATED/RATED

1	Continuous Hinge	x INTEGRAL HINGE GUARD CHANNEL X ADJUSTA-SCREWS
1	Exit Device	TYPE 1 F08 LEVER
1	Key Cylinder	TYPE AS REQUIRED
1	Closer	C02021
1	Kick Plate	J102
1	Edge Guard (@ Wood Doors)	J208M / J211 (VERIFY), CUT: HARDWARE
1	Floor Stop	L02121 x 3 FASTENERS
1	Threshold	J32300 x 57 MM WIDTH (2-1/4 INCHES)
1	Auto Door Bottom	R0Y346 - HEAVY DUTY
2	Sets Self-Adhesive Seals	R0Y154

HW-7Each Motorized Roll-up Door to Have:NON-RATED

1 Key Cylinder (for keyswitch) TYPE AS REQUIRED

BALANCE OF HARDWARE BY SECTION 08 33 00, COILING DOORS AND GRILLES

HW-8DEach [ADO] Aluminum Storefront Pair to Have:NON-RATED

2 Pivot Sets C07162

2 Intermediate Transfer Pivots C07321 x 4-WIRES

2 Intermediate Pivots C07321

2 Push/Pull Bar Sets J505 - 305 MM (12 INCH) CENTER-TO-CENTER  
PULL

2 Overhead Stops C01541-ADJUSTABLE

AUTO DOOR OPERATORS, CONTROLS, AND REACTIVATION SENSORS BY SECTION 08 71  
13.11.

POWER TRANSFERS FOR RE-ACTIVATION SENSOR WIRING (RE-ACTIVATION SENSORS  
PROVIDED BY SECTION 08 71 13).

120VAC POWER, CONDUIT, AND WIRING BY DIVISION 26.

HW-10CEach Pair to Have:NON-RATED

2 Continuous Hinges x INTEGRAL HINGE GUARD CHANNEL  
X ADJUSTA-SCREWS

1 Set Auto Flush Bolts TYPE 25 LESS BOTTOM BOLT

1 Utility Lock F09

1 Overlapping Astragal with R0Y634 x R0Y154 x THRU-BOLTS  
Self-Adhesive Seal

2 Kick Plates J102

1 Edge Guard (@ Wood Doors) J208M / J211 (VERIFY), CUT: HARDWARE

2 Floor Stops L02121 x 3 FASTENERS

1 Set Self-Adhesive Seals R0Y154

HW-10HEach [ADO] Lead-Lined Pair to Have:RATED/NON-RATED

2	Bottom Pivots	C07162 LESS TOP PIVOT x 454KG (1000 LBS) WEIGHT CAPACITY
1	Intermediate Pivot	C07311 (MIDDLE OF ACTIVE LEAF)
1	Intermediate Transfer Pivot	C07311 x 4 WIRE TRANSFER (MIDDLE OF INACTIVE LEAF)
2	Intermediate Transfer Pivot	C07311 x 4 WIRE TRANSFER (NEAR TOP OF EACH LEAF)
1	Set Auto Flush Bolts	TYPE 25 LESS BOTTOM BOLT X LEAD-LINED
1	Hospital Utility Lock	F09 x PADDLES POINTING DOWN X LEAD-LINED
1	Electric Unlatch Strike	E09321 (FAIL SECURE) (LEAD-LINED)
1	Power Supply	REGULATED, FILTERED, 24VDC, AMPERAGE AS REQUIRED
1	Coordinator	TYPE 21A
1	Overlapping Astragal with Self-Adhesive Seal	R0Y634 x R0Y154 x THRU-BOLTS X LEAD-LINED
2	Armor Plates	J101 x 1.275 MM (0.050 INCH) THICKNESS
4	Edge Guard (@ Wood Doors)	J208M / J211 (VERIFY), CUT: HARDWARE
2	Overhead Stops	C01541-ADJUSTABLE
1	Set Self-Adhesive Seals	R0Y154

AUTOMATIC DOOR OPERATORS AND CONTROLS BY SECTION 08 71 13, AUTOMATIC DOOR OPERATORS.

POWER TRANSFER PIVOTS NEAR TOP OF EACH DOOR FOR RE-ACTIVATION SENSOR WIRING (RE-ACTIVATION SENSORS PROVIDED BY SECTION 08 71 13).

HW-11AEach Pair to Have:NON-RATED

2	Continuous Hinges	x INTEGRAL HINGE GUARD CHANNEL X ADJUSTA-SCREWS
1	Set Auto Flush Bolts	TYPE 25
1	Security Storeroom Lock	F13-MOD x RIGID OUTSIDE LEVER x KEY RETRACTS DEADBOLT AND LATCHBOLT
1	Overlapping Astragal with Self-Adhesive Seal	R0Y634 x R0Y154 x THRU-BOLTS
2	Armor Plates	J101 x 1.275 MM (0.050 INCH) THICKNESS
2	Edge Guard (@ Wood Doors)	J208M / J211 (VERIFY), CUT: HARDWARE
2	Floor Stops	L02121 x 3 FASTENERS
1	Set Self-Adhesive Seals	R0Y154

HW-11BEach Pair to Have:RATED

2	Continuous Hinges	x INTEGRAL HINGE GUARD CHANNEL X ADJUSTA-SCREWS
1	Set Auto Flush Bolts	TYPE 25
1	Storeroom Lock	F07
1	Coordinator	TYPE 21A
1	Overlapping Astragal with Self-Adhesive Seal	R0Y634 x R0Y154 x THRU-BOLTS
2	Closers	C02011/C02021
2	Armor Plates	J101 x 1.275 MM (0.050 INCH) THICKNESS
2	Edge Guard (@ Wood Doors)	J208M / J211 (VERIFY), CUT: HARDWARE
2	Floor Stops	L02121 x 3 FASTENERS
1	Set Self-Adhesive Seals	R0Y154

HW-11CEach Pair to Have:RATED/NR

Hinges	QUANTITY & TYPE AS REQUIRED
1 Set Auto Flush Bolts	TYPE 25 LESS BOTTOM BOLT
1 Storeroom Lock	F07
1 Coordinator	TYPE 21A
1 Overlapping Astragal with Self-Adhesive Seal	R0Y634 x R0Y154 x THRU-BOLTS
2 Closers	C02011/C02021
2 Kick Plates	J102 (@ STORAGE ROOMS ONLY)
2 Floor Stops	L02121 x 3 FASTENERS
1 Threshold	J32300 x 57 MM WIDTH (2-1/4 INCHES)
2 Auto Door Bottoms	R0Y346 - HEAVY DUTY
2 Set Self-Adhesive Seals	R0Y154

**EXTERIOR SINGLE DOORS**HW-E1Each Door to Have:NON-RATED

1 Continuous Hinge	
1 Entry Lock	F11
1 Latch Protector (outswing dr)	
1 Closer	C02011/C02021
1 Kick Plate	J102
1 Floor Stop	L02121 x 3 FASTNERS
1 Threshold (outswing door)	J32120 x SILICONE GASKET
1 Threshold (inswing door)	ALUMINUM, PER ARCHITECTURAL DETAIL
1 Door Sweep	R0Y416
1 Set Frame Seals	R0Y164
1 Drip	R0Y976

HW-E4Each Door to Have:NON-RATED

1	Continuous Hinge	
1	Anti-Vandal Pull	
1	Exit Device	TYPE 1 F03 LESS TRIM
1	Latch Protector	
	(outswing dr.)	
1	Key Cylinder	TYPE AS REQUIRED
1	Closer	C02011
1	Kick Plate	J102
1	Floor Stop	L02121 x 3 FASTNERS
1	Threshold	J32120 x SILICONE GASKET
1	Door Sweep	R0Y416
1	Set Frame Seals	R0Y164
1	Drip	R0Y976

HW-E5Each Roll-up Door to Have:NON-RATED

1	Padlock or 2 Cylinders	TYPE AS REQUIRED
---	------------------------	------------------

BALANCE OF HARDWARE BY SECTION 08 33 00, COILING DOORS AND GRILLES

**EXTERIOR PAIRS OF DOORS**HW-E9Each Door to Have:NON-RATED

2	Continuous Hinge	
1	Exit Device	TYPE 8 F01
1	Exit Device	TYPE 8 F12 LESS PULL
1	Key Cylinder	TYPE AS REQUIRED
2	Latch Protectors (outswing dr.)	
1	Set Meeting Stile Astragals	R0Y834
2	Closer	C02011
2	Kick Plate	J102
2	Floor Stop	L02121 x (3) FASTNERS
1	Threshold	J32120 x SILICONE GASKET
2	Door Sweep	R0416
1	Set Frame Seals	R0Y164
1	Drip	R0Y976

HW-E10Each Sliding Door to Have:NON-RATED

1	Set Track Hardware	TYPE REQUIRED FOR DOOR MATERIAL, WEIGHT, AND MOUNTING DETAILS (COMPLETE WITH TRACK, TRACK BRACKETS, HANGERS, GUIDES, BUMPERS, AND INTERNAL TRACK STOPS)
2	Pulls	TYPE AS REQUIRED
1	Sliding Door Lock	E8281/E8291 (SLIDING DOOR LOCK)
2	Cylinder (for sliding dr lock)	TYPE AS REQUIRED

## SECURITY HARDWARE ABBREVIATIONS LEGEND:

AC = Access Control Device (Card reader, biometric reader, keypad, etc.)  
 ADO = Automatic Door Operator  
 DEML = Delayed Egress Magnetic Lock  
 DEPH = Delayed Egress Panic Exit Device  
 DPS = Door Position Switch (Door or Alarm Contact)  
 EL = Electric Lock or Electric Lever Exit Device  
 PB = Push-button Combination Lock (stand-alone)  
 RR = Remote Release Button  
 ELR = Electric Latch Retraction Exit Device  
 REX = Request-to-Exit Switch in Latching Device Inside Trim

## INTERIOR SINGLE SECURITY DOORS

HW-SH-3Each [AC, EL, REX, DPS] Door to Have:RATED/NON-RATED

Hinges	QUANTITY & TYPE AS REQUIRED
1 Transfer Hinge	4-WIRE TYPE AS REQUIRED
1 Electrified Lock	F07 (E01-REX, E06) 24VDC
1 Power Supply	REGULATED, FILTERED, 24VDC, AMPERAGE AS REQUIRED
1 Closer	C02011/C02021
1 Floor Stop	L02121 x 3 FASTENERS
1 Threshold	J32300 x 57 MM WIDTH (2-1/4 INCHES)
1 Auto Door Bottom	R0Y346 - HEAVY DUTY
2 Sets Self-Adhesive Seals	R0Y154
1 Alarm Contact	
120VAC POWER, CONDUIT, AND WIRING BY DIVISION 26.	
CARD READER BY DIVISION 28.	

**Part VI: Schedule E – Room Finish, Door & Hardware -- Page 32 of 34**

Lessor \_\_\_\_\_ Gov't. \_\_\_\_\_

\_\_\_\_\_ of \_\_\_\_\_ Pages



HW-SH-3CEach [PB] Door to Have:NON-RATED/RATED

1	Continuous Hinge	x INTEGRAL HINGE GUARD CHANNEL
		X ADJUSTA-SCREWS
1	Push-button Combination Lock	N3 - A156.13 F07 G1 E06
1	Closer	C02011/C02021
1	Armor Plate	J101 x 1.275 MM (0.050 INCH) THICKNESS
1	Edge Guard (@ Wood Doors)	J208M / J211 (VERIFY), CUT: HARDWARE
1	Floor Stop	L02121 x 3 FASTENERS
1	Set Self-Adhesive Seals	R0Y154

HW-SH-5AEach [AC, RR, EL, REX, DPS] Door to Have:RATED

1	Continuous Transfer Hinge	x INTEGRAL HINGE GUARD CHANNEL
		X ADJUSTA-SCREWS x 4-THRUWIRE TRANSFER x
		IN-HINGE ACCESS PANEL
1	Electrified Lock	F13-MOD x RIGID OUTSIDE LEVER x NO INSIDE
		TURN X KEY RETRACTS LATCHBOLT AND
		DEADBOLT (E01-REX, E06) 24VDC
1	Power Supply	REGULATED, FILTERED, 24VDC, AMPERAGE
		AS REQUIRED
1	Closer	
1	Kick Plate	
1	Floor Stop	
1	Auto Door Bottom	
1	Set Self-Adhesive Seals	
1	Alarm Contact	

120VAC POWER, CONDUIT, AND WIRING BY DIVISION 26.  
CARD READER BY DIVISION 28.

HW-SH-10AEach [AC, ADO, EL, REX, DPS] Pair Integrated Doors to Have: RATED

1 Key Cylinder

TYPE AS REQUIRED

BALANCE OF HARDWARE BY SECTION 08 17 10, INTEGRATED DOOR ASSEMBLIES.

AUTOMATIC DOOR OPERATORS AND CONTROLS BY SECTION 08 71 13, AUTOMATIC DOOR  
OPERATORS.