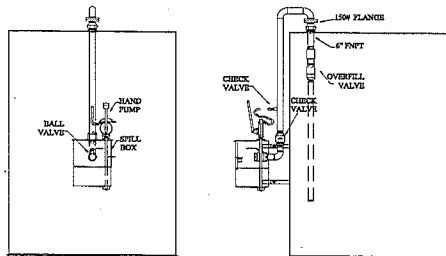


SHEET KEYED NOTES

- 1 GROUNDING ELECTRODE ROD 3/4"x10' CL-2 COPPER STEEL CONNECTED TO GENERATOR GROUNDING SYSTEM BUS BAR.
- 2 #4/0 BSC. (TYP)
- 3 #4/0 BSC. AND BOND TO REBAR FOR CONCRETE ENCASED ELECTRODE.
- 4 THE GENERAL GROUNDING SYSTEM SHALL HAVE A RESISTANCE TO SOLID EARTH NOT EXCEEDING 5 OHMS. PROVIDE ADDITIONAL GROUND RODS TO ACHIEVE THIS VALUE. SUBMIT GROUND RESISTANCE TEST RESULTS.
- 5 GROUND RODs.
- 6 CONCRETE GROUNDING PAD. SEE DETAIL #1, THIS SHEET.

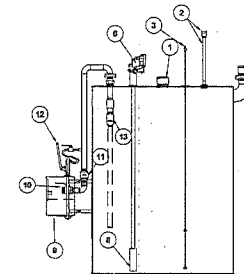
1 TYPICAL GENERATOR/FUEL TANK PAD GROUNDING SYSTEM
SCALE: NONE

DEPARTMENT OF VETERANS AFFAIRS PAUL AUTO DESIGN 174 PAUL AUTO HEALTH CARE - LIVERMORE DIVISION REPLACE EMERGENCY POWER SYSTEMS LIVERMORE DETAILS SANTA CLARA COUNTYCA		Drawn by: _____ Desig. by: _____ Checked by: _____ Approved by: _____ Date: _____ Scale: _____ Sheet: _____ of _____
--	--	--



GROUND LEVEL FILL EQUIPMENT-DIESEL

- DIXON 300 F OR KURIYAMA AL-F300 3\"/>
- DIXON 300-DC-AL OR KURIYAMA AL-DC300 3\"/>
- MORRISON BROS. 691-1000 IV 3\"/>
- MORRISON 158A-0800AV 3\"/>
- GOODYEAR 532-327-024 FLEXSTEEL 3/4\"/>
- PETROLEUM HOSE.
- FUELGRIP 3/4\"/>
- FUELGRIP 3/4\"/>
- FILL RITE FR151 DIAPHRAM PUMP
- BAKER INDUSTRIES 20 GALLON SPILL CONTAINMENT BOX.
- MORRISON BROS. 909SA OVERFILL PREVENTION VALVE AND MORRISON BROS 3\"/>



COMPONENT DESCRIPTION

1. EMERGENCY VENT	MORRISON 1244H L.S.
2. VENT	MORRISON 146035000 AV
3. LIQUID LEVEL GAUGE	VEEDER ROOT 04230-022 SC custom length
4.	
5.	2\"/>

PART NUMBER

DIESEL ENGINE SUPPLY

Equipment and descriptions subject to change without notice.

GROUND LEVEL FILL SYSTEM-DIESEL

DRAWN BY: JJ DATE: 06/14/87 DRAWING NO. GLF-D

UL 142 AST

DEPARTMENT OF VETERANS AFFAIRS
PALO ALTO REGION
PALO ALTO DIVISION
REPLACE EMERGENCY POWER SYSTEMS
SANTA CLARA COUNTY, CA

Sheet
Number:
X-300