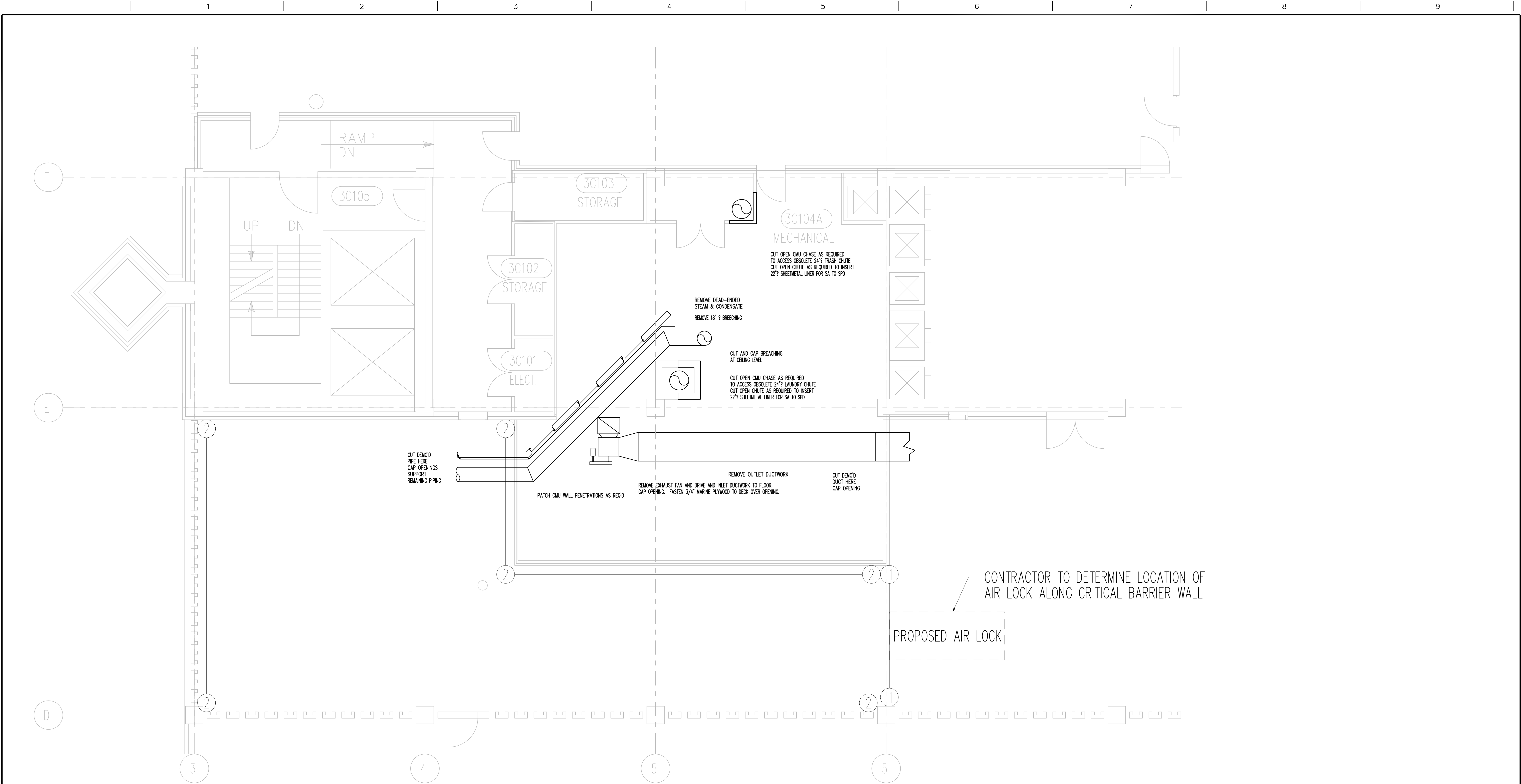


three inches = one foot
one and one half inches = one foot
one inch = one foot
three quarters inch = one foot
one half inch = one foot
three eighths inch = one foot
one quarter inch = one foot
one eighth inch = one foot



3RD LEVEL EQUIPMENT ROOM PART PLAN - DEMOLITION
SCALE: 1/4" = 1'-0"





GENERAL NOTES:

SHEET NOTES:

LEGEND:

- LEGEND
- ① CONSTRUCT CRITICAL BARRIER WALL OF (2) LAYERS 6 mil POLY W/ 2x4 METAL STUDS AT A MAXIMUM OF 2' O.C. EXACT LOCATIONS TO BE DETERMINED BY CONTRACTOR, AND PROVISIONS MADE FOR HEPA FILTERED EXHAUST. CREATE AND MARK EMERGENCY EXITS.
 - ② USE EXISTING WALL FOR CRITICAL BARRIER, COVER WITH (2) LAYERS 6mil POLY AND SEAL ALL PENETRATIONS

100% ISSUED FOR CONSTRUCTION
COMPLETION ITEM NO. 3
FULLY SPRINKLERED

Revisions	Date	 Dept. of Veterans Affairs Medical Center 1670 Clairmont Road Decatur, Georgia 30033	Professional Seal	ARCHITECT/ENGINEERS:  VETERAN ENGINEERING GROUP, INC. 4411 Suwanee Dam, Ste. 230, Suwanee, GA 30024  UNITED CONSULTING 625 Holcomb Bridge Road	Drawing Title ASBESTOS ABATEMENT WORK AREA	Project Title RENOVATION OF EXISTING STERILE PROCESSING SERVICE (SPS)			Project Number 508-10-113 Building Number 1		Office of Facilities Management  Department of Veterans Affairs
Approved Project Director						Location VAMC, DECATUR, GA.		Drawing Number ARI 311 Dwg. 11 of 27			
Date	FEBRUARY 24, 2012	Checked	MF	Drawn	JW						