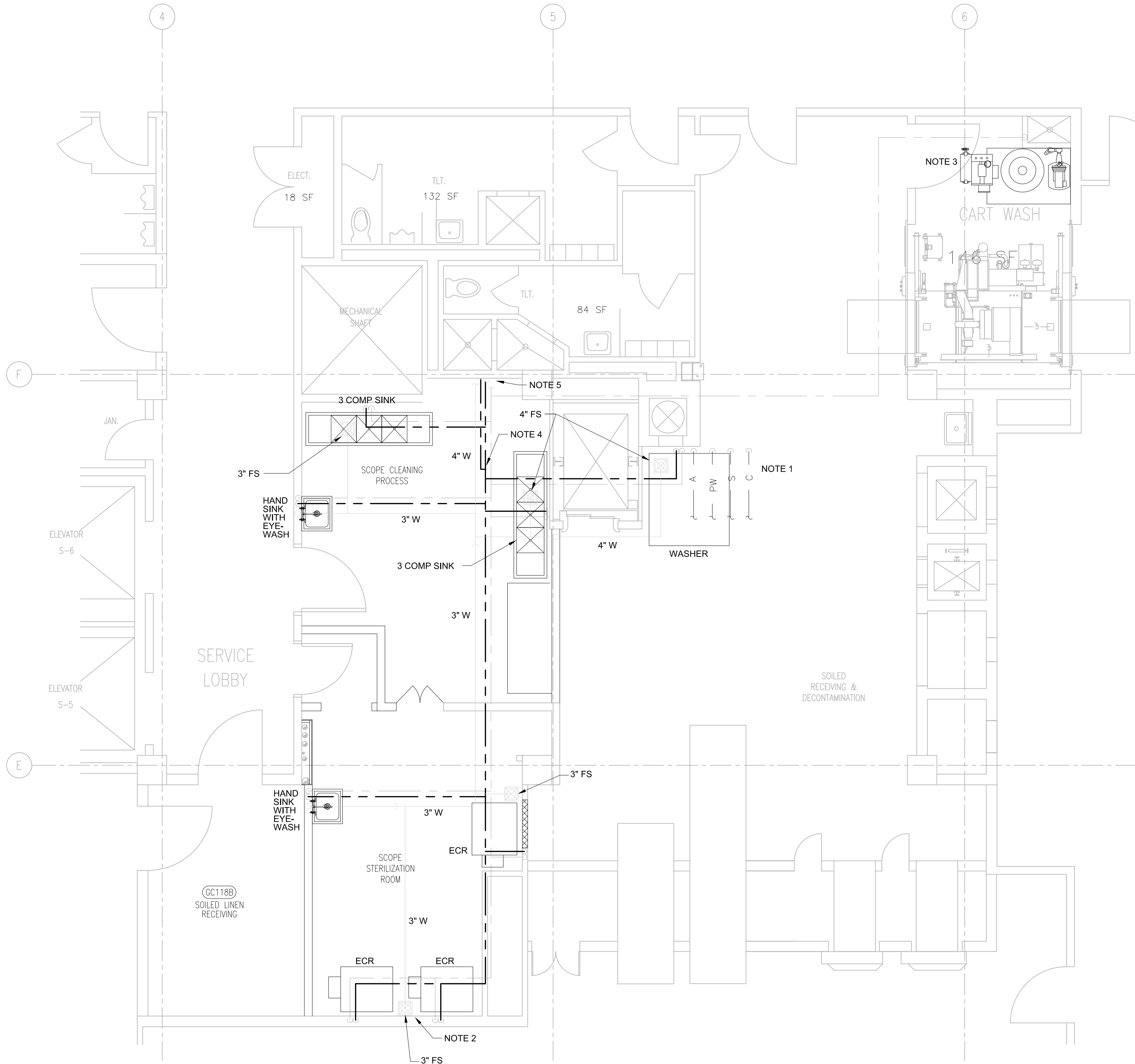


three inches = one foot
one and one half inches = one foot
one inch = one foot
three quarters inch = one foot
one half inch = one foot
three eighths inch = one foot
one quarter inch = one foot
one eighth inch = one foot



DRAWING NOTES:

- RELOCATE WASHER FROM AREA BEING RENOVATED FOR SCOPE CLEANING PROCESS. REMOVE EXISTING EXPOSED UTILITIES AT CURRENT LOCATION AND PROVIDE NEW PIPING TO EQUIPMENT IN NEW LOCATION. COORDINATE WITH GENERAL CONTRACTOR FOR EXACT LOCATION.
- PROVIDE 3" STANDPIPE FOR EACH ECR UNIT.
- RELOCATE REVERSE OSMOSIS (RO) SYSTEM TO THIS LOCATION. CONNECT NEW COLD WATER TO RELOCATED RO SYSTEM. COORDINATE WITH GENERAL CONTRACTOR FOR EXACT LOCATION.
- PROVIDE HOT WATER RECIRCULATION FROM THIS POINT BACK TO COLD WATER INLET OF WATER HEATER (BID BASIS - 150 FT WITH 4 ELBOWS). PROVIDE WATER RECIRCULATION PUMP & ACCESSORIES - TACO HLS-1.
- PROVIDE HOT & COLD SHUTOFF VALVES AT CONNECTION TO SOURCE.

LEGEND:

- A - AIR LINE
C - CONDENSATE LINE
ECR - ECOTECH CLEANER / REPROCESSOR
FS - FLOOR SINK
PW - PURIFIED WATER LINE
S - STEAM LINE
W - WASTE LINE
- - - COLD WATER
- - - HOT WATER

E1 PART GROUND FLOOR PLAN - PLUMBING -NEW WORK
1/4" = 1'-0"

GENERAL NOTES:

SHEET NOTES:

LEGEND:

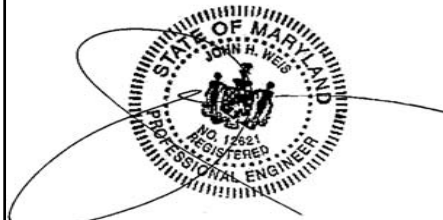
100% ISSUED FOR CONSTRUCTION
COMPLETION ITEM NO. 3
FULLY SPRINKLERED

Revisions:	Date



Dept. of Veterans Affairs
Medical Center
1670 Clairmont Road
Decatur, Georgia 30033

Professional Seal



ARCHITECT/ENGINEERS:



VETERAN ENGINEERING GROUP, INC.
4411 Suwanee Dam, Ste. 230, Suwanee, GA 30024

Smith Carter

ARCHITECTURE ENGINEERING PLANNING
1123 Zonolite Road, Suite 25, Atlanta, GA 30306

Drawing Title

PART GROUND FLOOR PLAN -
NEW PLUMBING WORK

Approved Project Director

Project Title

RENOVATION OF EXISTING
STERILE PROCESSING SERVICE (SPS)

Location
VAMC, DECATUR, GA.

Date
FEBRUARY 24, 2012

Checked
WK

Drawn
JW

Project Number

508-10-113

Building Number
1

Drawing Number
M102

Dwg. 15 of 27

Office of
Facilities
Management

