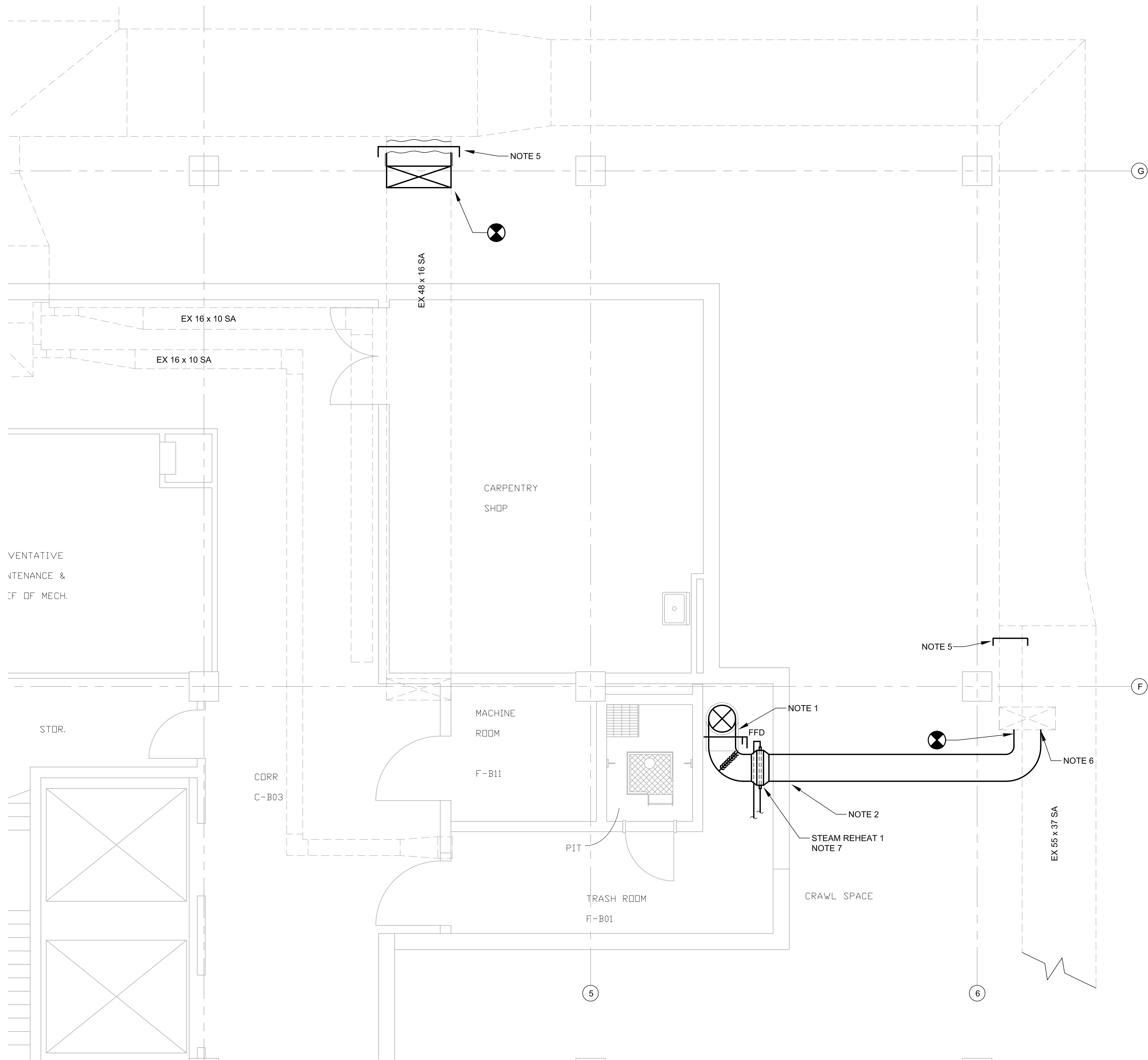
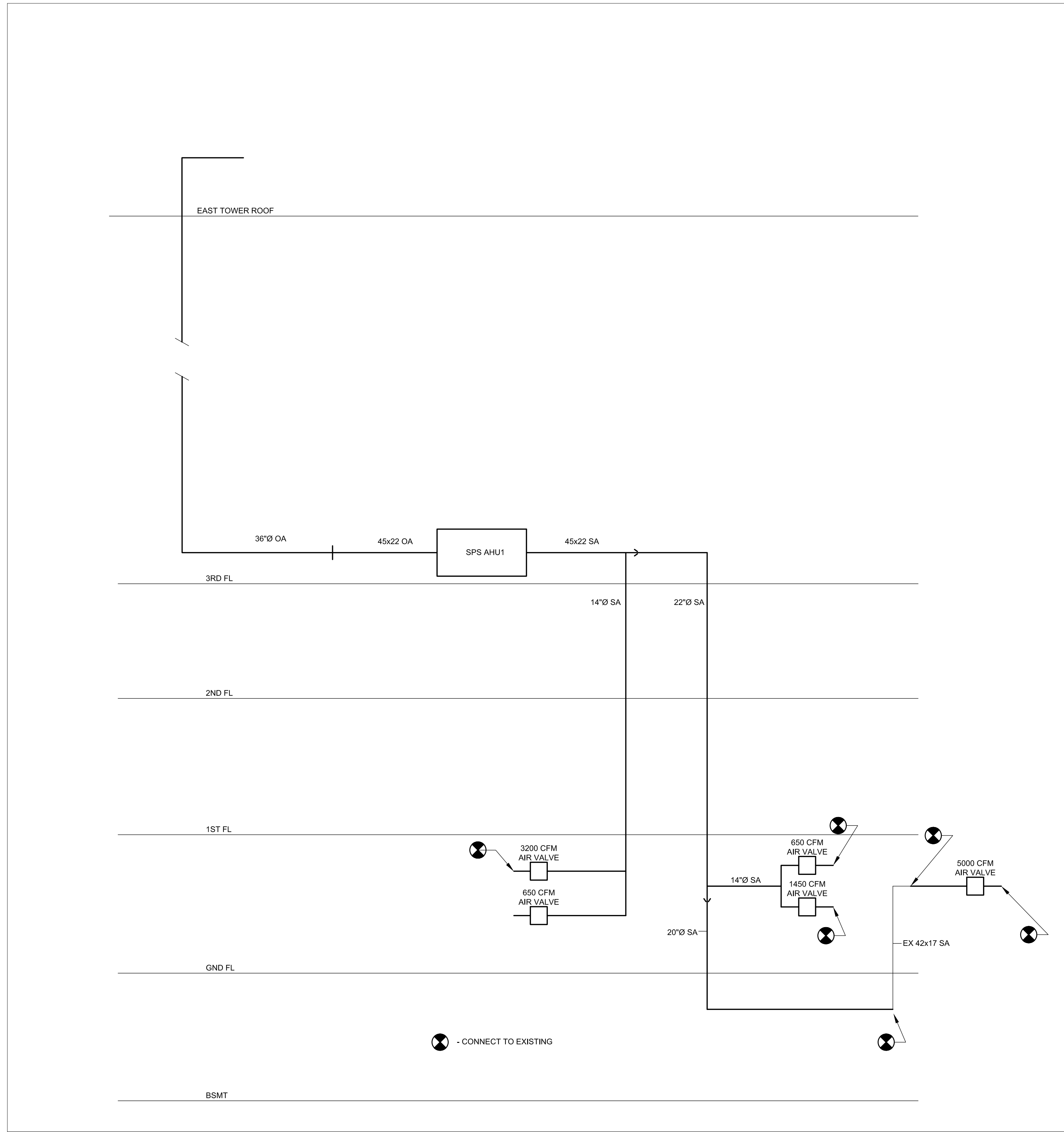


three inches = one foot  
one and one half inches = one foot  
one inch = one foot  
three quarters inch = one foot  
one half inch = one foot  
three eighths inch = one foot  
one quarter inch = one foot  
one eighth inch = one foot



E1 PART BASEMENT FLOOR PLAN - NEW WORK  
1/4" = 1'-0"



E2 SPS 100% OUTSIDE AIR SUPPLY DUCTWORK RISER  
NO SCALE

GENERAL NOTES:

SHEET NOTES:

LEGEND:

1. PROVIDE 20" Ø SA FROM BRANCH AT GROUND FLOOR TO THIS LEVEL. PROVIDE SMOKE & FIRE DAMPER AT EXIT OF SHAFT.
2. PROVIDE OPENING IN CONCRETE WALL FOR 20" Ø SA TO PENETRATE. PROVIDE MECHANICAL SEAL OF WALL TO DUCT.
3. TRENCH DIRT FLOOR IN CRAWLSPACE AS REQUIRED TO ACCOMMODATE NEW 20" Ø SA.
4. CUT AND CAP EX. 42x18 BRANCH DUCT.
5. CUT AND CAP EX 42x17 BRANCH DUCT.
6. CONNECT NEW 20" Ø SA TO EX 42x17 SA RISER.
7. PROVIDE 1-1/4" STEAM SUPPLY AND 3/4" CONDENSATE FROM NEAREST SOURCE. BASE OF BID IS 150 FT AND 6 ELBOWS.

100% ISSUED FOR CONSTRUCTION  
COMPLETION ITEM NO. 3  
FULLY SPRINKLERED

Revisions	Date



Dept. of Veterans Affairs  
Medical Center  
1670 Clairmont Road  
Decatur, Georgia 30033

Professional Seal



ARCHITECT/ENGINEERS:

**VEG** VETERAN ENGINEERING GROUP, INC.  
4411 Suwanee Dam, Ste. 230, Suwanee, GA 30024  
**Smith Carter** ARCHITECTURE ENGINEERING PLANNING  
1123 Zonolite Road, Suite 25, Atlanta, GA 30306

Drawing Title

PART BASEMENT PLAN -  
NEW WORK

Approved Project Director

Project Title

RENOVATION OF EXISTING  
STERILE PROCESSING SERVICE (SPS)

Location

VAMC, DECATUR, GA.

Date

FEBRUARY 24, 2012

Checked

MF

Drawn

JW

Project Number

508-10-113

Building Number

1

Drawing Number

M101

Dwg. 14 of 27

Office of  
Facilities  
Management

