

three inches = one foot
one and one half inches = one foot
one inch = one foot
three quarters inch = one foot
one half inch = one foot
three eighths inch = one foot
one quarter inch = one foot
one eighth inch = one foot

GENERAL SHEET NOTES

- FLOORING CONTRACTOR TO PROVIDE WRITTEN ACCEPTANCE OF EXISTING FLOOR AND ANY PATCHED AREAS PRIOR TO BEGINNING INSTALLATION OF NEW MATERIALS.
- NEW FLOOR FINISH TO CONTINUE UNDER NEW CASEWORK.
- INSTALL SLOPED MARBLE THRESHOLDS UNDERNEATH DOORS AT BATHROOMS AND OTHER CERAMIC TILE LOCATIONS.
- REFER TO SHEET A-602 FOR THE FINISH SCHEDULE.
- REFER TO THE FINISH SCHEDULE ON SHEET A-602 FOR FINISH MATERIAL ABBREVIATIONS.
- REFER TO THE REFLECTED CEILING PLANS FOR COMBINATION CEILINGS (SAT AND SUSPENDED GYPSUM BOARD OR OTHER COMBINATIONS) AND CEILING HEIGHTS.
- WHERE SOLID VINYL TILE MEETS WELDED SHEET FLOORING, PROVIDE RESILIENT EDGE STRIP IN COLOR TO MATCH SHEET FLOORING. ALIGN STRIP UNDER CENTER OF DOOR.
- REFER TO INTERIOR ELEVATIONS, CASEWORK ELEVATIONS, AND FINISH SCHEDULE FOR LOCATIONS OF ACCENT WALLS AND WALL PAPER LOCATIONS.
- ALL GYPSUM BOARD CEILINGS AND SOFFITS SHALL RECEIVE FINISH A1 UNLESS NOTED OTHERWISE.
- PAIN COLORS CHOSEN FROM SHERWIN WILLIAMS STANDARD PALETTE AS WELL AS CUSTOM FORMULAS.

FINISH PLAN SYMBOLS

FINISH SCHEDULE TAG
DIRECTIONAL WALL IDENTIFICATION
SEE A-602 FOR FINISH SCHEDULE.

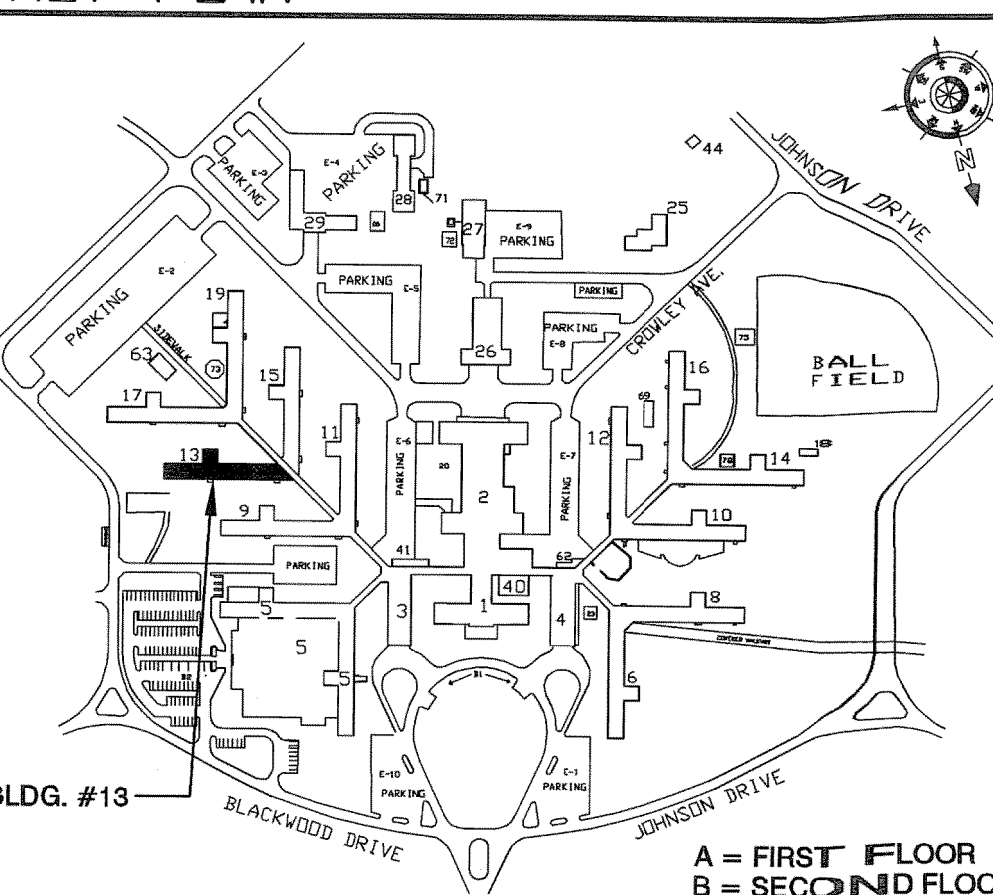
COORDINATION DRAWINGS

THE MECHANICAL CONTRACTOR SHALL TAKE THE LEAD IN PREPARATION OF COORDINATION DRAWINGS. SUCH DRAWINGS SHALL BE ARRANGED AND DESIGNED THROUGH AND FROM COORDINATION WITH ALL OTHER MAJOR AND MINOR SUBCONTRACTORS AND THE GENERAL CONTRACTOR. PROVIDE PLAN VIEWS, SECTIONS AND ELEVATIONS AS REQUIRED TO FULLY COORDINATE ALL NEW WORK WITH ITSELF AND EXISTING CONDITIONS. DRAW TO SCALE (AT NOT LESS THAN 3/8" = 1'-0"). DRAWINGS SHALL SHOW, BUT NOT BE LIMITED TO: ALL WALL RATINGS; ALL DUCTWORK; ALL AIR DISTRIBUTION; MECHANICAL EQUIPMENT; MECHANICAL PIPING; FIRE PROTECTION PIPING; ALL PLUMBING PIPING; CABLE TRAYS (WITH ELEVATIONS NOTED); LIGHTING FIXTURES (WHEN CEILING MOUNTED); CEILING GRID AND CEILING HEIGHTS; MAJOR BEAMS AND JOISTS (WITH ELEVATIONS MARKED); FIRE ALARM DEVICES AND SPEAKERS (WHERE CEILING MOUNTED); ELECTRICAL CONDUITS LARGER THAN 2-INCH DIAMETER; ELECTRICAL BUSWAY AND REQUIRED CLEARANCES; EQUIPMENT PROVIDED BY OTHERS THAT PROTRUDE INTO CEILING CAVITIES OR IMPEDE THE LOCATION OR ACCESS TO ABOVE CEILING PIPING, DUCTWORK OR OTHER EQUIPMENT. ALL SECTIONS SHALL BE CUT THROUGH AREAS SHOWING MATERIALS AND SYSTEMS OF ALL CONTRACTS. IF THERE ARE ANY OUTSTANDING ISSUES THAT CANNOT BE RESOLVED, CONSULT WITH THE ARCHITECT AND/OR ENGINEER (THROUGH THE VA COTR) FOR GUIDANCE AND MAKE CORRECTIONS IN ACCORDANCE WITH DIRECTIONS GIVEN. IT IS IMPORTANT TO NOTE THAT FABRICATION CANNOT BEGIN UNTIL COORDINATION DRAWINGS HAVE BEEN APPROVED. ANY MATERIAL, EQUIPMENT, SYSTEMS, ETC., PROCUREMENT OR INSTALLATION COMMENCED PRIOR TO APPROVAL IS TAKEN AT THE CONTRACTORS OWN RISK AND MAY HAVE TO BE MODIFIED, MOVED AND/OR RECONFIGURED AT THE CONTRACTORS COST.

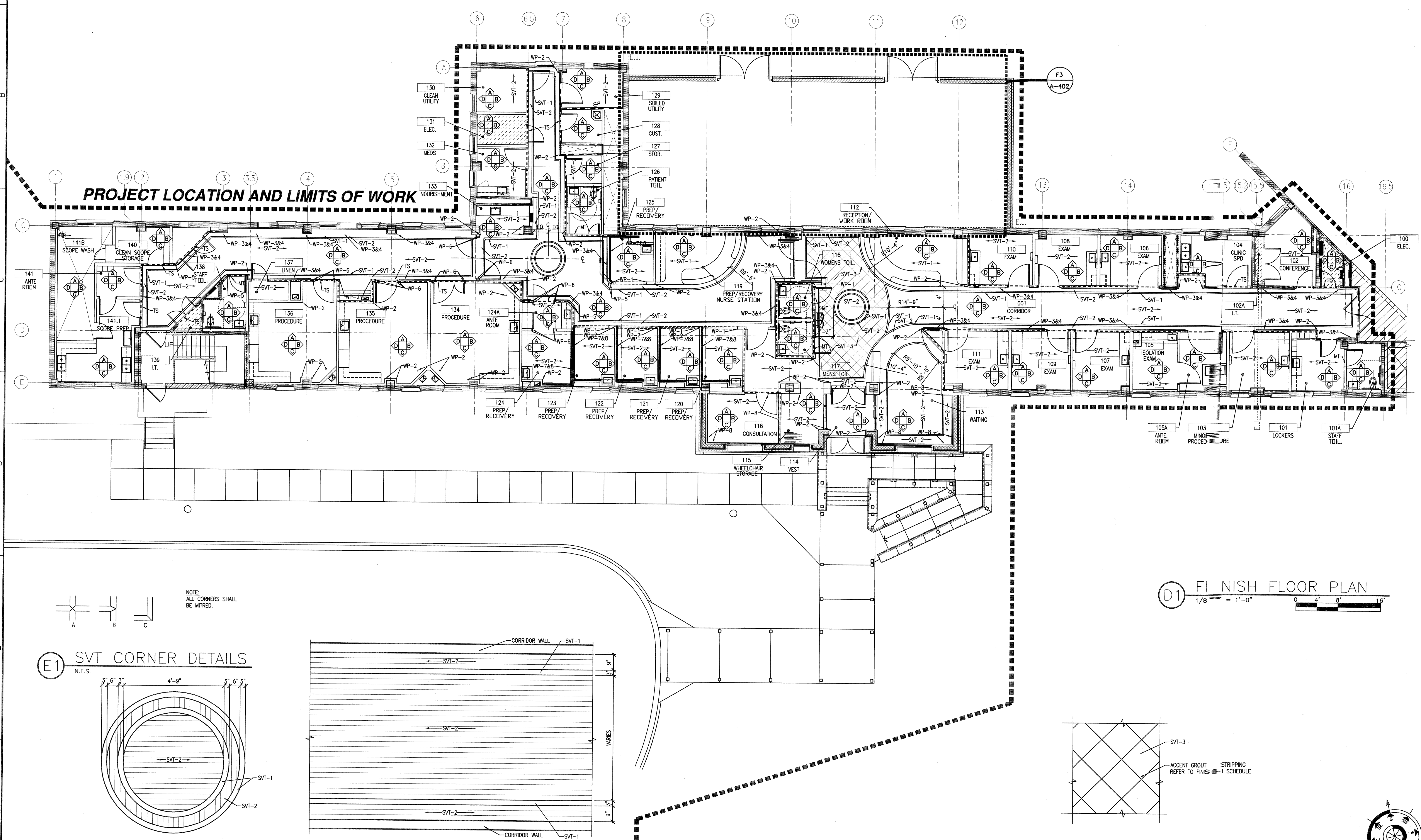
TYPICAL SYMBOLS

- EXISTING WALL, DOOR, WINDOW, MILLWORK, FIXTURE OR OTHER FIXTURE OR ASSEMBLY TO BE REMOVED.
- EXISTING WALL, DOOR, WINDOW, MILLWORK, FIXTURE OR OTHER FIXTURE OR ASSEMBLY TO REMAIN.
- NEW WALL
- SMOKE TIGHT WALL
- 1-HOUR FIRE RATED WALL
- 2-HOUR FIRE RATED WALL
- 1 HOUR FIRE SMOKE RATED WALL
- PROJECT LIMITS OF WORK
- NO PIPING OR DUCTWORK SHALL BE ROUTED THROUGH ELECTRICAL AND/OR DATA ROOMS.

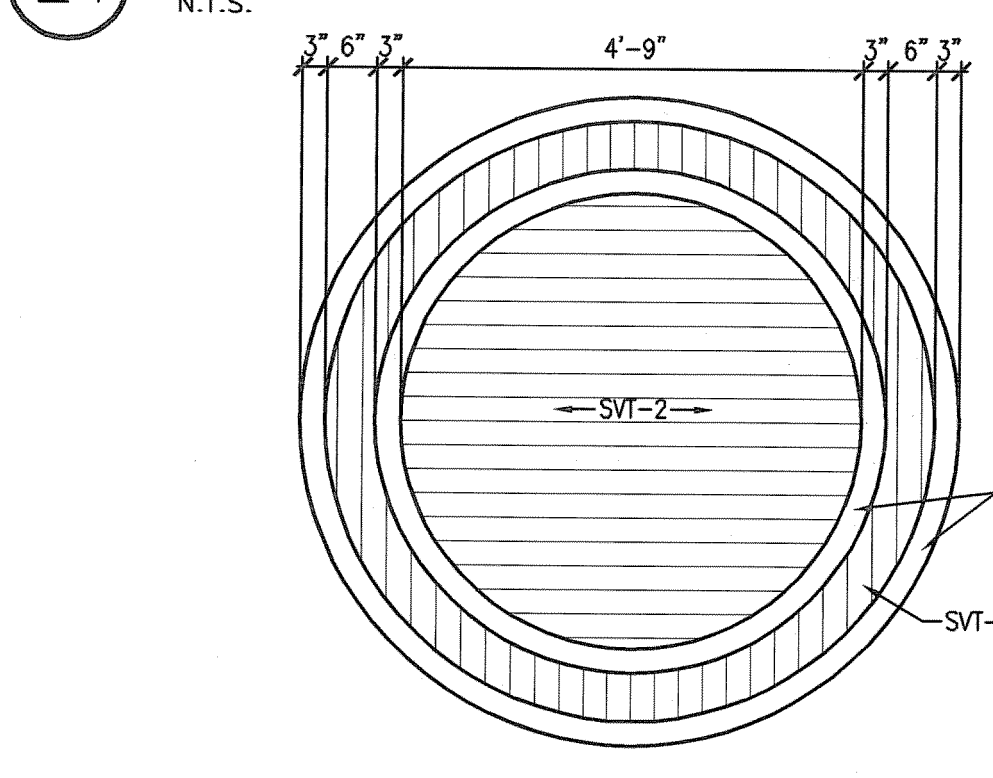
KEY PLAN



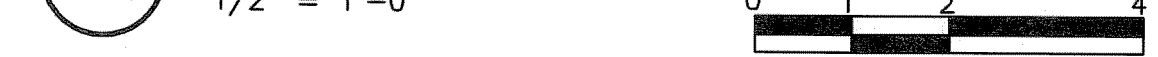
PROJECT LOCATION AND LIMITS OF WORK



E1 SVT CORNER DETAILS
N.T.S.



F1 ENLARGED FEATURE PLAN
1/2" = 1'-0"



F2 ENLARGED TYPICAL CORRIDOR
1/2" = 1'-0"



D1 FINISH FLOOR PLAN
1/8" = 1'-0"



F7 ENLARGED SVT TILE PLAN
1/2" = 1'-0"



100% SUBMITTAL

REVISION NO. 1 2 3 4 5 6 7 8 9 10		REVISION DESCRIPTION		Department of Veterans Affairs Medical Center 1826 Veterans Blvd. Dublin, Ga. 31021		Architect/Engineer Address Harrell, Salttrick & Hopper Design & Management Solutions for the Built Environment 151 LOCUST STREET, SUITE #1 ATLANTA, GEORGIA 30303 P 704.814.1325 F 704.321.0833 WWW.HSHPC.COM COPYRIGHT © 2011 HARRELL, SALTTRICK & HOPPER, PC HSH PROJECT # 10004		Recommended Approvals: 1. MEDICAL DIRECTOR 2. ASSOCIATE DIRECTOR 3. CHIEF OF STAFF 4. ASSOC. DIRECTOR 5. SERVICE LINE MGRS. 6. OPERATIONS SERVICE LINE MANAGER 7. INFECTION CONTROL SAFETY MANAGER 8. SAFETY MANAGER 9. GENERAL ENGINEER 10. COTR		Project Title ARCHITECTURAL FINISH FLOOR PLAN FULLY SPRINKLERED		Project Title RENOVATE 13A FOR ENDOSCOPY SUITE Drawn MJF Checked Reviewed Const. Contract No.		Date June 10, 2011 Project Number 557-10-108 DRAWING No. A-106		Veterans Affairs	
--	--	-----------------------------	--	--	--	---	--	--	--	--	--	--	--	---	--	-------------------------	--