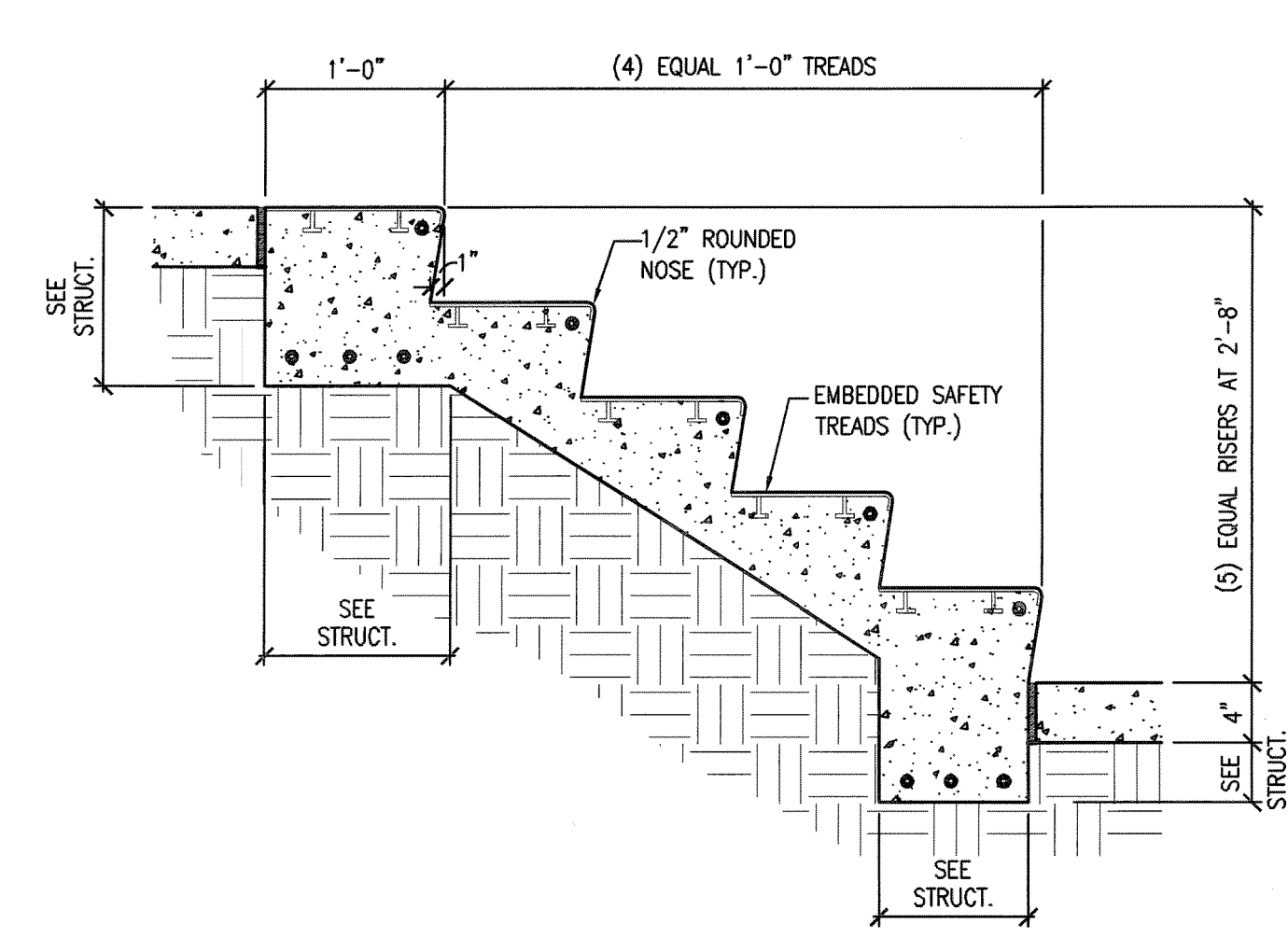
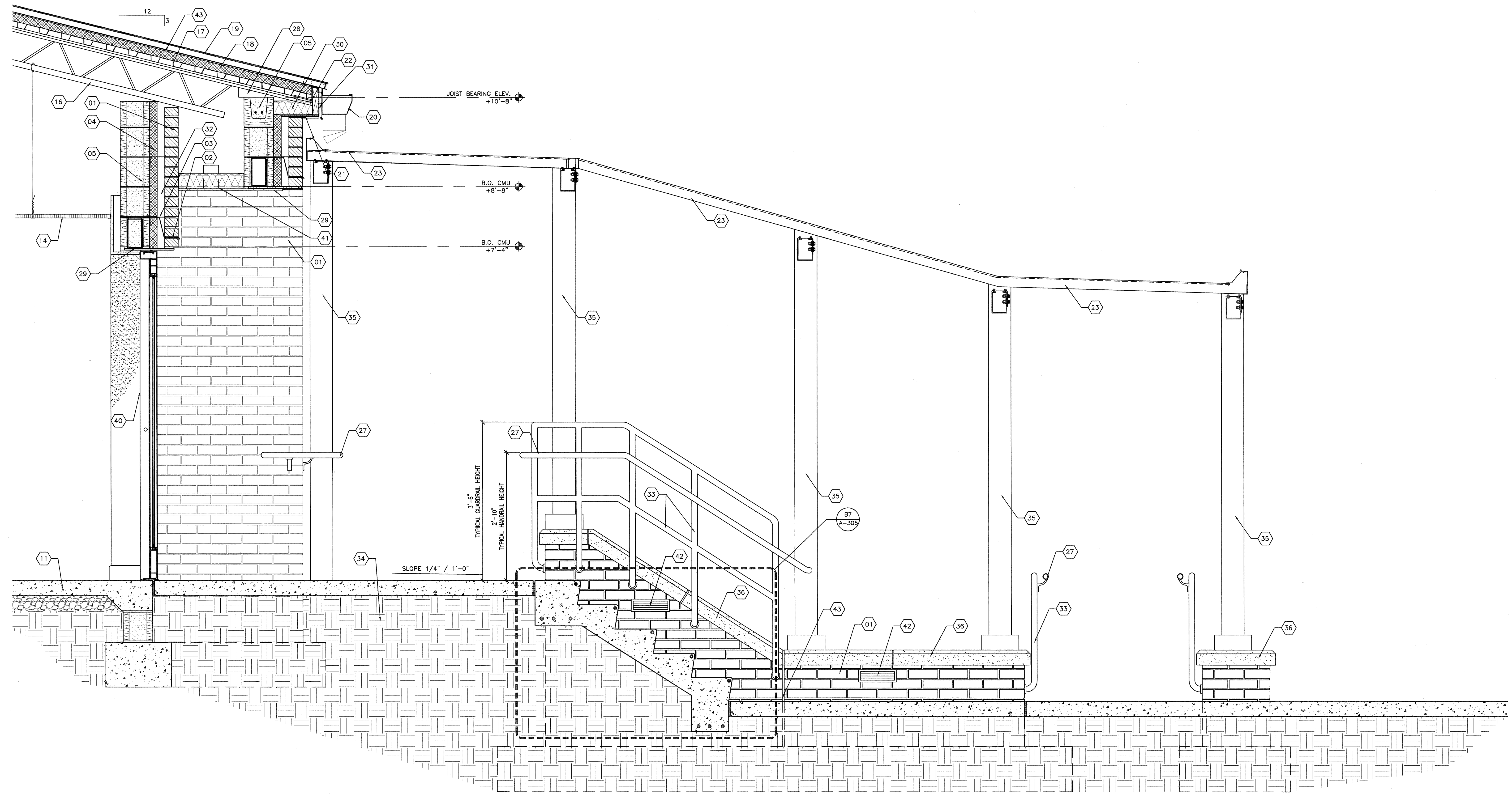


three inches = one foot  
one and one half inches = one foot  
one inch = one foot  
three quarters inch = one foot  
one half inch = one foot  
one quarter inch = one foot  
one eighth inch = one foot



B7 DETAIL AT NEW ENTRANCE STAIR  
1" = 1'-0"



F1 TYPICAL WALL SECTION AT NEW ENTRANCE DOOR AND STAIRS  
1" = 1'-0"

- SHEET KEYNOTES
- 4" (NOMINAL) BRICK VENEER
  - THRU WALL FLASHING, PROVIDE WEEP HOLES. (MIN. 24" O.C.)
  - HOT DIPPED GALVANIZED MASONRY TIE.
  - 2" RIGID INSULATION
  - 8" CMU- SEE STRUCTURAL DRAWINGS FOR REINFORCEMENT
  - 1/2" BOND BREAK
  - NEW EXPANSION JOINT COVER
  - 4" PERFORATED DRAIN PIPE-RUN TO DAYLIGHT
  - 1 7/8" FURRING (HAT CHANNEL) ATTACHED TO CMU
  - PAINTED 5/8" GYPSUM BOARD
  - 4" CONCRETE SLAB ON GRADE WITH VAPOR BARRIER- SEE STRUCT. DRAWINGS
  - GROUT SOLID BELOW FINISH FLOOR
  - PAINTED GYPSUM BOARD CEILING
  - ACOUSTICAL LAY-IN TILE CEILING
  - 4" METAL STUD-SECURELY ATTACHED TO FLOOR ABOVE
  - STEEL JOIST- SEE STRUCTURAL DRAWINGS
  - 1 1/2" METAL DECK-SEE STRUCTURAL DRAWINGS
  - 2" RIGID INSULATION
  - STANDING SEAM METAL ROOF
  - PRE-FINISHED GUTTER
  - PRE-FINISHED FLASHING TO MATCH ROOF AND GUTTERS
  - BENT PLATE-SEE STRUCTURAL DRAWINGS
  - ALUMINUM CANOPY
  - EXISTING BRICK TO REMAIN
  - PRE-FINISHED FLASHING
  - RAKE NEW STEP FLASHING INTO EXISTING BRICK JOINT
  - NEW STAINLESS STEEL HANDRAIL
  - EXTENDED LEG ON JOIST- SEE STRUCTURAL DRAWINGS
  - STRUCTURAL STEEL-SEE STRUCTURAL DRAWINGS
  - 4" 16g. METAL STUDS AT 16" O.C. SECURELY ATTACHED TO CMU.
  - PRE-FINISHED METAL FASCIA-
  - 2" AIR SPACE
  - 1 1/2" STAINLESS STEEL PIPE FOR HANDRAIL ATTACHMENT
  - COMPACTED GROUND
  - ALUMINUM CANOPY POST
  - CAST IN PLACE CONCRETE CAP
  - 1/4" DRIP EDGE
  - FILTER FABRIC
  - SCHEDULED BASE
  - SCHEDULED DOOR
  - 5/8" EXTERIOR GRADE PAINTED GYPSUM BOARD
  - STEP LIGHT- SEE ELECTRICAL DRAWINGS
  - SINGLE-PLY MEMBRANE ROOFING
  - MASONRY CONTROL JOINT, 1/2" COMPRESSIBLE FILLER WITH BACKER ROD AND SEALANT

REVISION NO. REVISION DESCRIPTION By Date	 Department of Veterans Affairs Medical Center 1826 Veterans Blvd. Dublin, Ga. 31021	 DANIEL C. SALTTRICK PROFESSIONAL ENGINEER NORTH CAROLINA 6.10.11	Architect/Engineer Address  Design & Management Solutions for the Built Environment 151 LOCUST STREET, SUITE #1 AVONDALE ESTATES, GA 30002 P 704.814.1325 F 704.321.0833 WWW.HSHPC.COM COPYRIGHT © 2011 HARRELL, SALTTRICK & HOPPER, PC HSH PROJECT # 10004	Recommended Approvals:		Drawing Title WALL SECTIONS	Project Title RENOVATE 13A FOR ENDOSCOPY SUITE	Date June 10, 2011	Veterans Affairs
				1. MEDICAL DIRECTOR 2. ASSOCIATE DIRECTOR 3. CHIEF OF STAFF 4. ASSOC. DIRECTOR 5. SERVICE LINE MGRS.	6. OPERATIONS SERVICE LINE MANAGER 7. INFECTION CONTROL SAFETY MANAGER 8. SAFETY MANAGER 9. GENERAL ENGINEER 10. COTR	FULLY SPRINKLERED	Drawn MJF Building Number MJF AutoCAD File Name Checked Reviewed Const. Contract No.	Project Number 557-10-108 DRAWING No. A-305	