

one and one half inches = one foot
three quarters inch = one foot
one inch = one foot
three quarters inch = one foot
one half inch = one foot
three eighths inch = one foot
one quarter inch = one foot
one eighth inch = one foot

EXISTING BUILDING 3

EXISTING BUILDING 2

TYPICAL,
EXAM ROOM
LIGHTING LAYOUT
IN EXAM G-06, G-08,
G-20, G-22, G-23, G-24,
G-25, G-31, G-32, G-33,
G-34, G-35 & G-36
EXISTING BUILDING 2

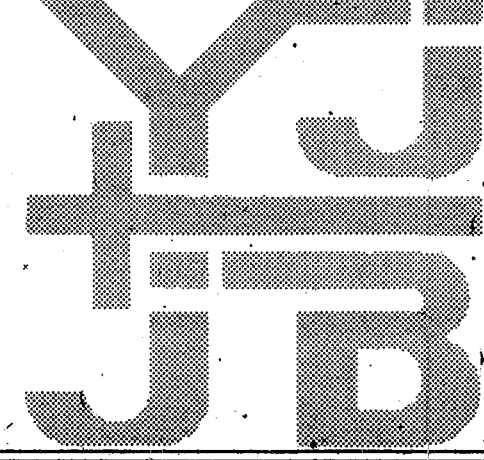
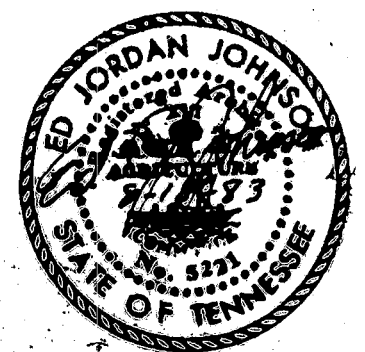
SMOKE PARTITION (1 HR. RATED CONSTRUCTION)
1 HR. RATED PARTITION
2 HR. RATED PARTITION
2 HR. RATED & SMOKE PARTITION
2 HR. SHAFT WALL

CEILING LEGEND
○ LIGHT
⊠ SUPPLY AIR DIFFUSER
⊡ RETURN AIR GRILLE
• SPRINKLER HEAD

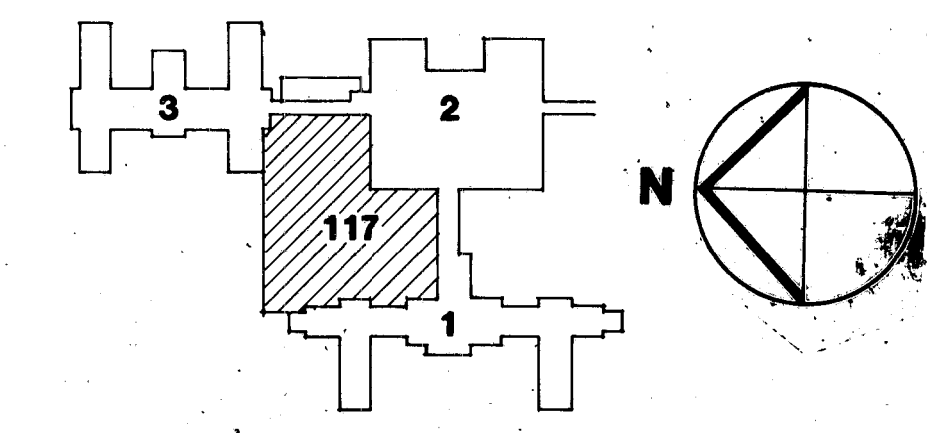
NOTE: ALL CEILING HEIGHTS ARE 9'-0"
UNLESS NOTED OTHERWISE.
NEW ADDITION FULLY PROTECTED
BY AUTOMATIC FIRE-EXTINGUISHING
SYSTEM.

0.80	0.86
0.16	0.15 SC GRN
0.15	0.14 SC GRN
0.14	0.13 SC GRN
0.13	0.12 SC GRN
0.12	0.11 SC GRN
0.11	0.10 SC GRN
0.10	0.09 SC GRN
0.09	0.08 SC GRN
0.08	0.07 SC GRN
0.07	0.06 SC GRN
0.06	0.05 SC GRN
0.05	0.04 SC GRN
0.04	0.03 SC GRN
0.03	0.02 SC GRN
0.02	0.01 SC GRN

For Reference Only



YEARWOOD + JOHNSON ARCHITECTS INC
JOHNSON + BAILEY ARCHITECTS PC
A JOINT VENTURE
ARCHITECTURE / INTERIOR DESIGN
SMITH SECKMAN REID INC
CONSULTING M-E ENGINEERS
STANLEY D. LINDSEY + ASSOCIATES LTD
CONSULTING STRUCTURAL ENGINEERS



Drawing Title GROUND FLOOR REFLECTED CEILING PLAN		Project Title CLINICAL ADDITIONS + ALTERATIONS		Date 8-18-83
Approved Project Director <i>James L. ...</i>		Building Number 117		Project No 622-070
Checked J.S.P.		Location VAMC MURFREESBORO, TN		Drawing No 117-19

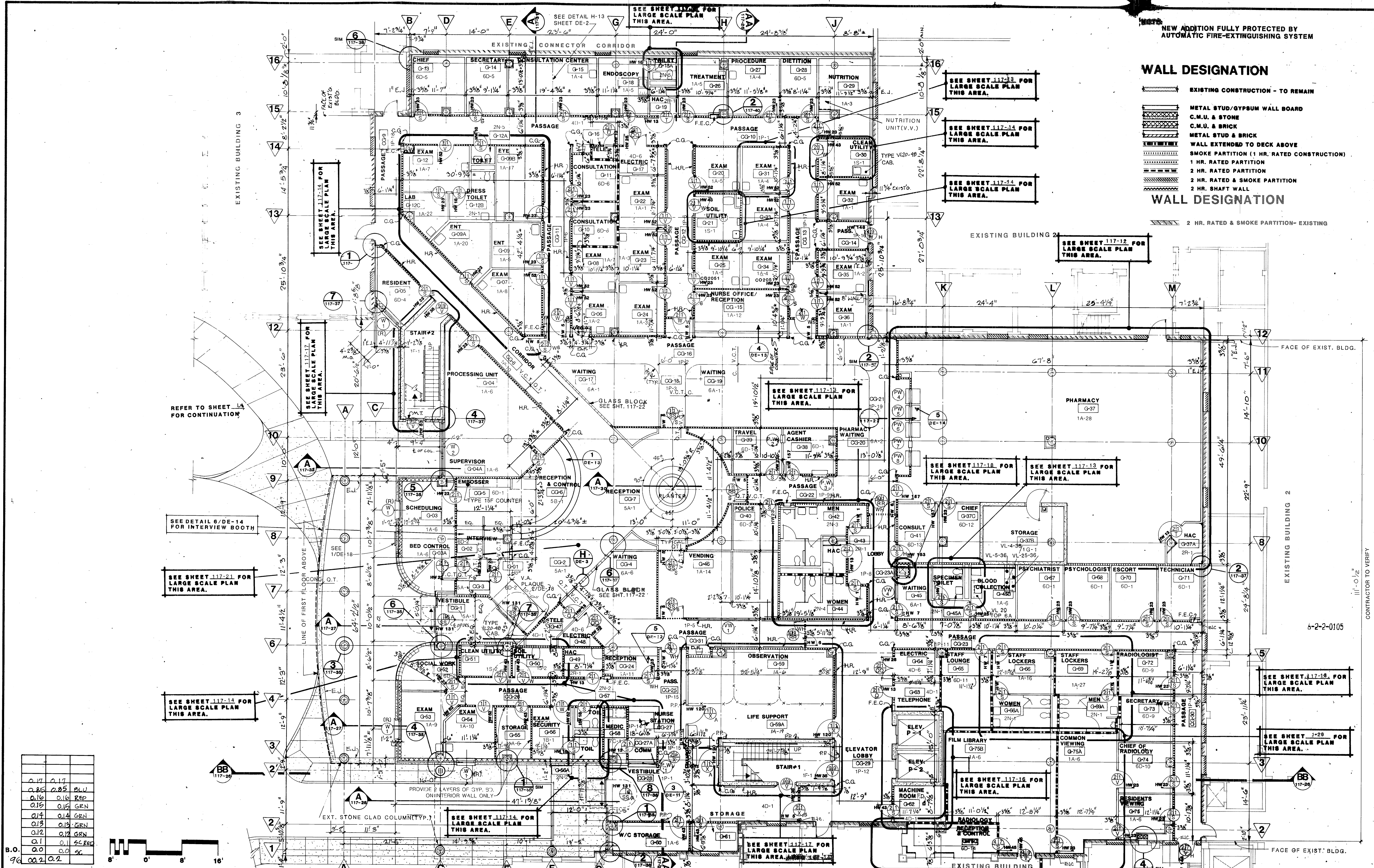
6-2-2-0120

PHASE - 2

Veterans Administration

three inches = one foot
one and one half inches = one foot
three quarters inch = one foot
one half inch = one foot
three eighths inch = one foot
one quarter inch = one foot
one eighth inch = one foot

0.17 0.17
0.85 0.25 PLU
0.16 0.16 REP
0.15 0.15 GEN
0.14 0.14 GEN
0.13 0.13 GEN
0.12 0.12 GEN
0.11 0.11 GEN
0.10 0.10 GEN
0.09 0.09 GEN
0.08 0.08 GEN
0.07 0.07 GEN
0.06 0.06 GEN
0.05 0.05 GEN
0.04 0.04 GEN
0.03 0.03 GEN
0.02 0.02 GEN
0.01 0.01 GEN
0.00 0.00 GEN



WALL DESIGNATION

EXISTING CONSTRUCTION - TO REMAIN

- METAL STUD/GYPSUM WALL BOARD
- C.M.U. & STONE
- C.M.U. & BRICK
- METAL STUD & BRICK
- WALL EXTENDED TO DECK ABOVE
- SMOKE PARTITION (1 HR. RATED CONSTRUCTION)
- 1 HR. RATED PARTITION
- 2 HR. RATED PARTITION
- 2 HR. RATED & SMOKE PARTITION
- 2 HR. SHAFT WALL

WALL DESIGNATION

2 HR. RATED & SMOKE PARTITION- EXISTING

RECORD DRAWING

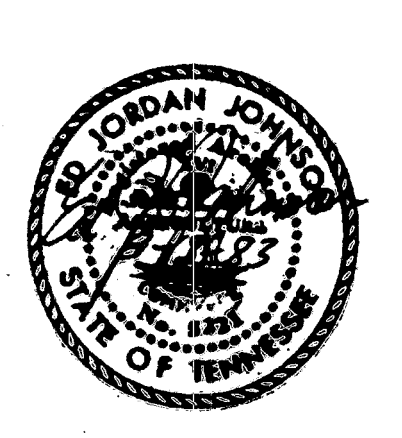
5/15/87

Date

Revisions

NO.	DESCRIPTION	DATE
1	AS SHOWN	5/15/87

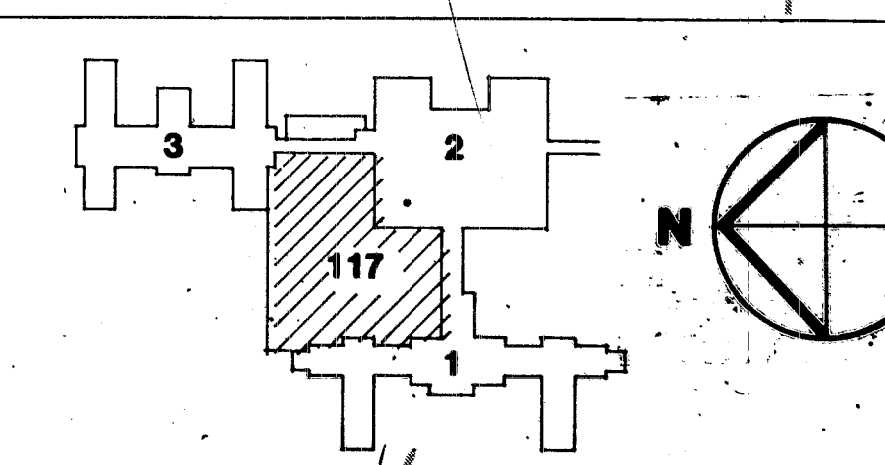
For Reference Only



YEARWOOD + JOHNSON ARCHITECTS INC
JOHNSON + BAILEY ARCHITECTS PC
A JOINT VENTURE
ARCHITECTURE / INTERIOR DESIGN

SMITH SECKMAN REID INC
CONSULTING M-E ENGINEERS

STANLEY D. LINDSEY + ASSOCIATES LTD
CONSULTING STRUCTURAL ENGINEERS



GROUND FLOOR PLAN

Project Title: **CLINICAL ADDITIONS + ALTERATIONS**

Date: 8-18-83

Project No: 622-070

Building Number: **117**

Location: **VAMC MURFREESBORO, TN**

Approved Project Director: *[Signature]*

Drawn: J.C.F.

Checked: [Signature]

Drawing No: **117-4**

Scale: 1" = 10'-0"

PHASE - 2

Veterans Administration