

three inches = one foot
one and one half inches = one foot
one inch = one foot
three quarters inch = one foot
one half inch = one foot
three eighths inch = one foot
one quarter inch = one foot
one eighth inch = one foot

LEGEND

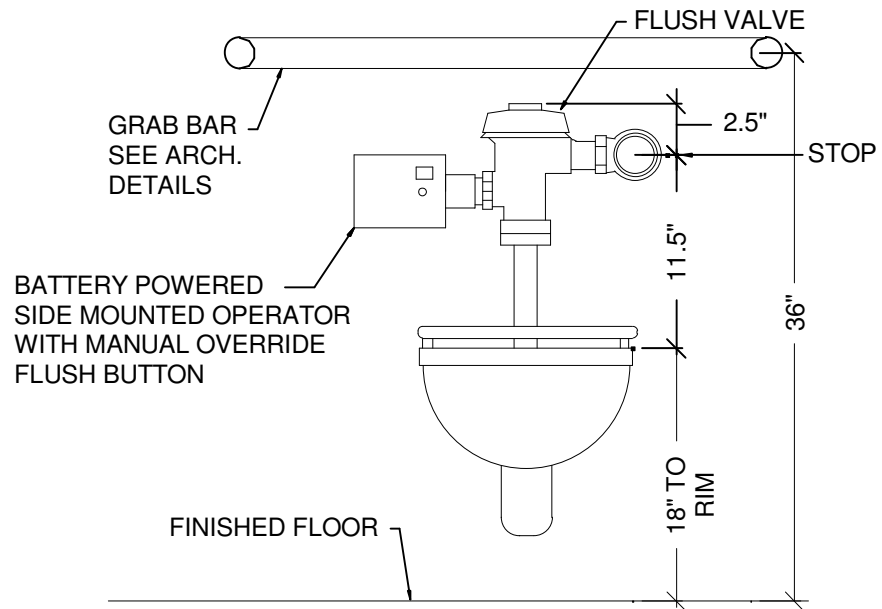
- G.C. GENERAL CONTRACTOR
P.C. PLUMBING CONTRACTOR
F.S.C. FIRE SUPPRESSION CONTRACTOR
H.C. HVAC CONTRACTOR
E.C. ELECTRICAL CONTRACTOR
- SOIL AND OR WASTE PIPE (SP) OR (WP)
VENT PIPE
DOMESTIC COLD WATER PIPE
DOMESTIC HOT WATER PIPE
DOMESTIC HOT WATER RETURN PIPE
- SHUT-OFF VALVE (BALL)
COMBINATION BALANCING & SHUT OFF VALVE
CHECK VALVE
EXISTING PIPE TO BE REMOVED
DIRECTION OF FLOW
- P103 UP TO FIXTURE ABOVE
3 "NOTE" SYMBOL (FOR NOTES ON SAME SHEET)
X "CONNECT TO EXISTING" SYMBOL
- DCW DOMESTIC COLD WATER
DHW DOMESTIC HOT WATER
DHWRT DOMESTIC HOT WATER RETURN
SS SANITARY STACK (SOIL/WASTE)
SR SUPPLY RISER
VR VENT RISER
CO CLEANOUT
CSS CLINIC SERVICE SINK (EXISTING)
DF DRINKING FOUNTAIN (EXISTING)
LV LAVATORY (EXISTING)
SH SHOWER (EXISTING)
SK SINK (EXISTING)
WC WATER CLOSET (EXISTING)
- 123 ROOM NUMBER
P420 PLUMBING FIXTURE DESIGNATION
T THERMOMETER

GENERAL NOTES

- A ALL PIPING IS ABOVE THE CEILING (AT THE UNDERSIDE OF STRUCTURE IN EXPOSED STRUCTURE AREAS), UNLESS OTHERWISE NOTED.
- B REFER TO SCHEDULES, DETAILS AND DIAGRAMS FOR PIPING, PIPE SIZES AND PIPELINE DEVICES NOT INDICATED ON THE FLOOR PLAN.
- C ABOVE CEILING UTILITY SPACE IS LIMITED IN CERTAIN AREAS. COORDINATION WITH ALL TRADES IS CRITICAL. PRIOR TO INSTALLATION ON ANY WORK.
- D LOCATIONS AND SIZES OF EXISTING PIPING HAVE BEEN DETERMINED FROM A REVIEW OF EXISTING DRAWINGS AND/OR SITE INSPECTION. WHERE POSSIBLE, FIELD VERIFICATION OF EXACT LOCATIONS, ELEVATIONS, INVERTS, SIZES, DIRECTION OF FLOW, ETC. SHALL BE REQUIRED PRIOR TO BEGINNING NEW WORK.
- E ALL PIPING SHALL BE REMOVED BACK TO ACTIVE MAINS AND CAPPED, OR REMOVED BACK TO POINTS OF CONNECTION OF NEW WORK. INACCESSIBLE PIPING, WHERE SO NOTED, TO BE ABANDONED SHALL BE DISCONNECTED FROM ACTIVE MAINS AND CAPPED OR PLUGGED IN CONCEALED LOCATIONS.
- F NEW CONNECTIONS TO EXISTING PIPING SHALL BE WITH THE SAME SIZE AS THE EXISTING PIPING UNLESS OTHERWISE NOTED.
- G ALL REMOVED MATERIAL AND EQUIPMENT SO DESIGNATED BY THE C.O.T.R., SHALL BE TURNED OVER AND PLACED WHERE DIRECTED. ALL MATERIAL AND EQUIPMENT, WHICH THE OWNER DOES NOT WISH TO RETAIN, SHALL BECOME THE PROPERTY OF THE CONTRACTOR RESPONSIBLE FOR THE REMOVAL.

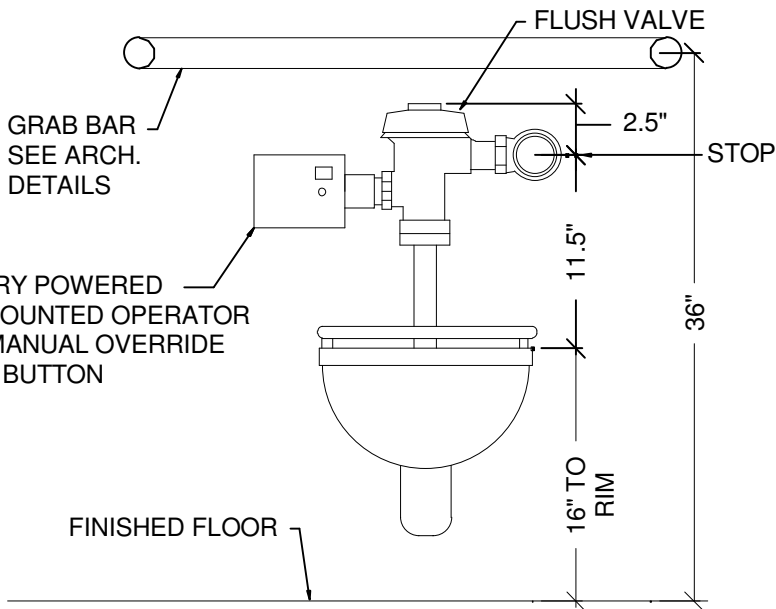
FIXTURE SCHEDULE

SYMBOL	MOUNTING HEIGHT	DESCRIPTION	FLOW		FIXTURE UNITS		SUPPLY				DRAINAGE CONNECTION				REMARKS
			GPM	GPF	DRAINS	WATER C/H	COLD	HOT	CHILLED	OUTLET	VENT		DIRECT	INDIRECT	
P103	18" TO RIM	WATER CLOSET/WALL HUNG/ELONGATED BOWL/ADA		1.28	4	5'-	1"	-	-	4"	2"		●	-	BATTERY POWERED/SENSOR OPERATED
P107	16" TO RIM	WATER CLOSET/WALL HUNG/ELONGATED BOWL		1.28	4	5'-	1"	-	-	4"	2"		●	-	BATTERY POWERED/SENSOR OPERATED
P201	17" TO RIM	URINAL/WALL HUNG/ADA		0.5	2	2'-	0.75"	-	-	2"	1.5"		●	-	BATTERY POWERED/SENSOR OPERATED
P420	-	LAVATORY/STN. ST./19-5/8" X 16-11/16" OVAL/CTOP MTD./ADA		0.5	1	0.6/0.6	0.5"	0.5"	-	1.5"	1.5"		●	-	HARD-WIRED/SENSOR OPERATED/NON-AERATED FLOW CONTROL/GOOSENECK SPOUT/TRAP WRAP
P524	-	SINK/INTEGRAL W/C/TOP/STN. ST./SINGLE COMP/T/21" x 22"			1	0.6/0.6	0.5"	0.5"	-	1.5"	1.5"		●	-	GOOSENECK SPOUT/WRISTBLADE HANDLES/STAINLESS STEEL
P609	36" TO SPOUT	WATER COOLER/DRINKING FOUNTAIN/ADA			0.5	0.75	0.5"	-	-	1.5"	1.5"		●	-	WALL MOUNTED



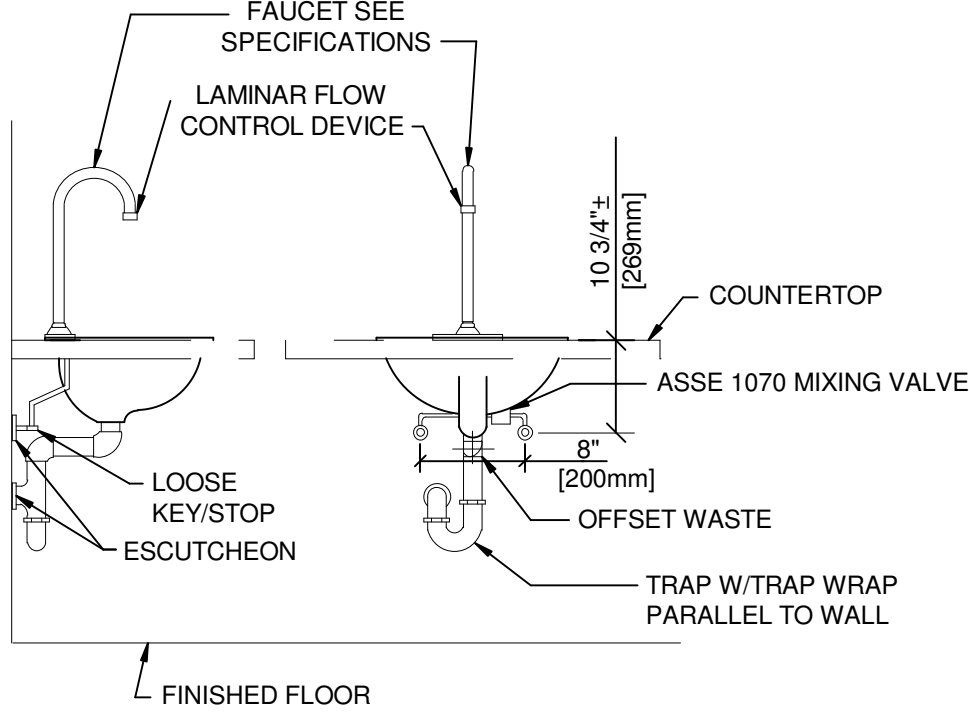
P103 WATER CLOSET

Scale: N.T.S.



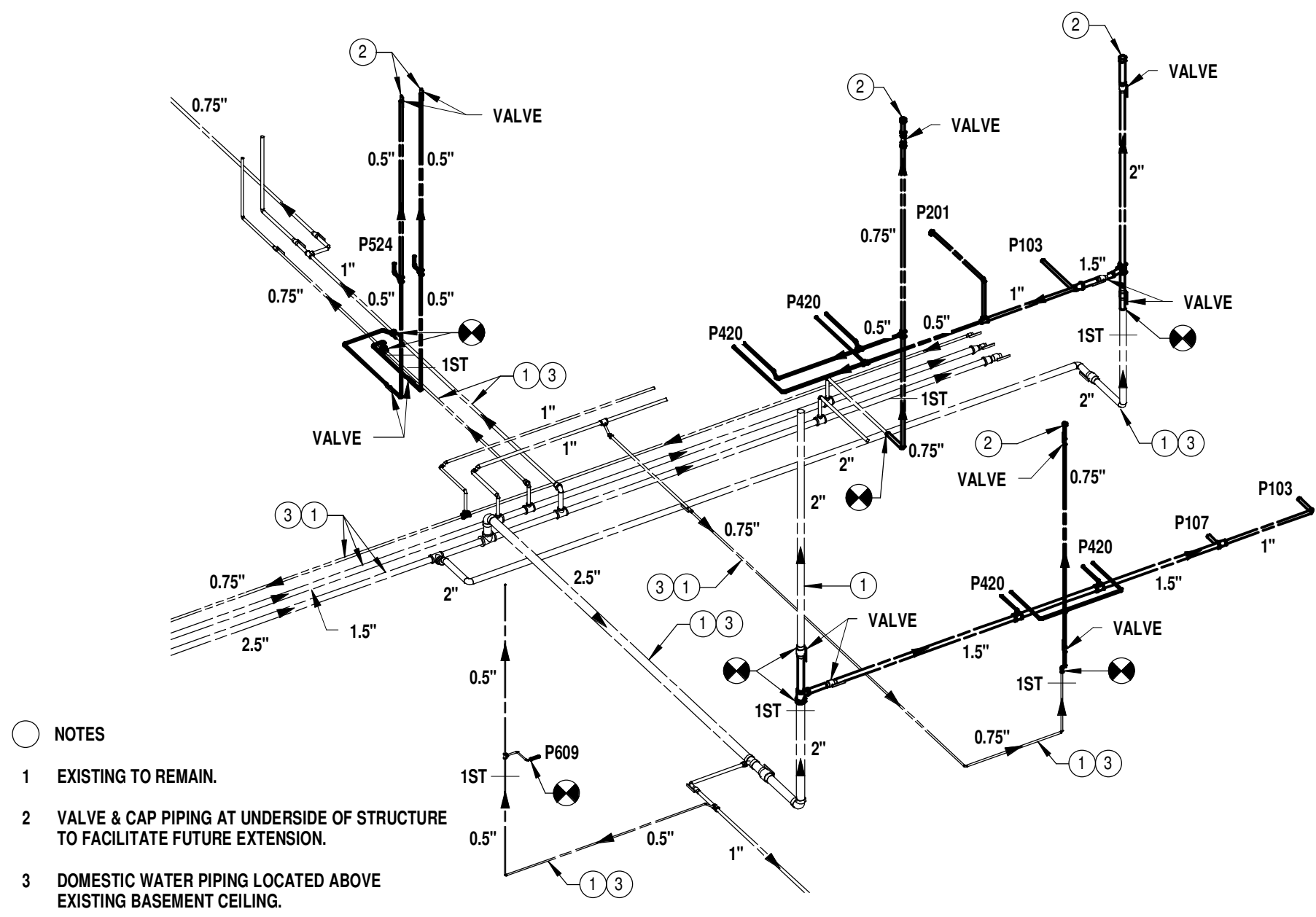
P107 WATER CLOSET

Scale: N.T.S.



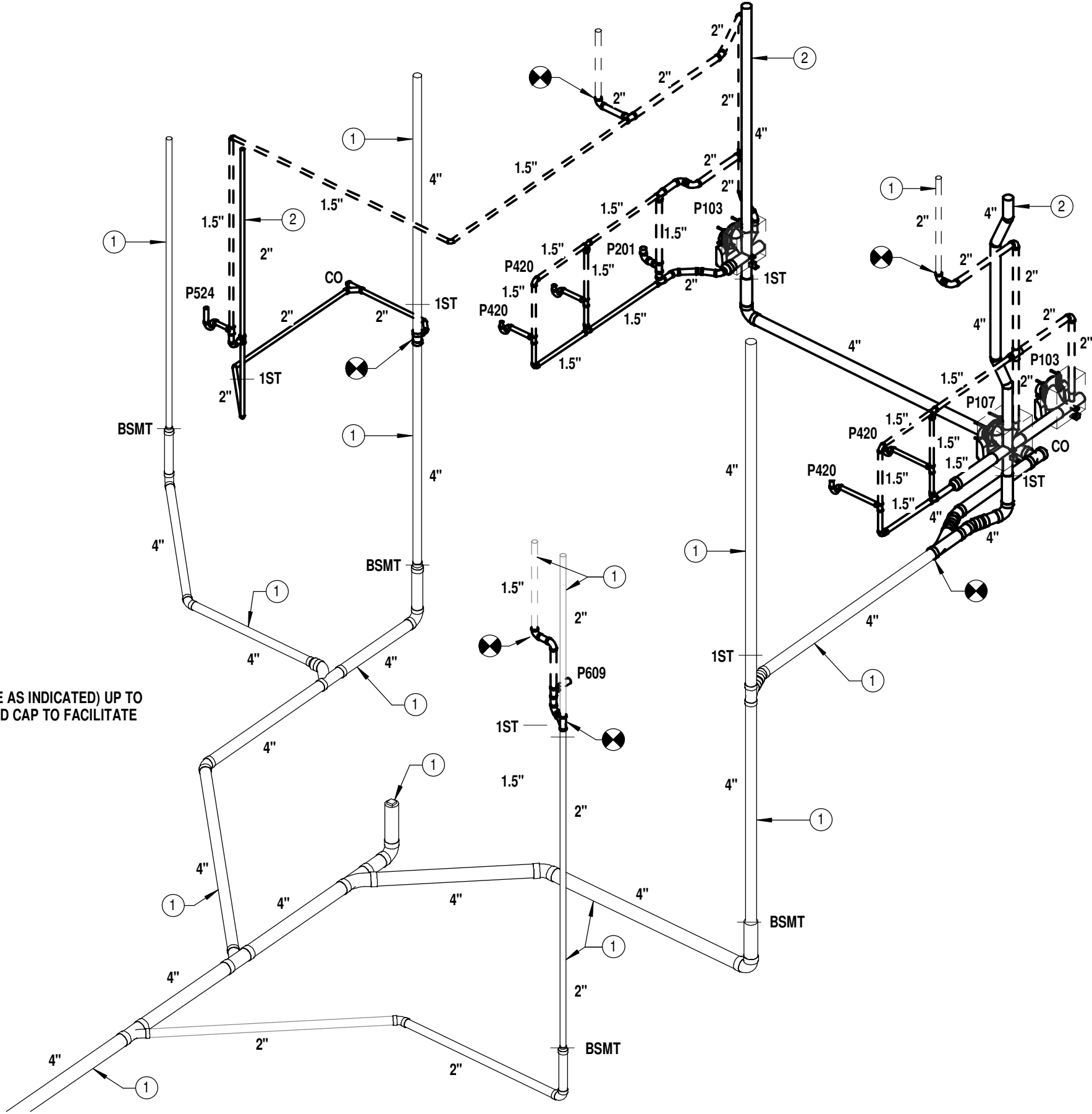
P420 LAVATORY

Scale: N.T.S.



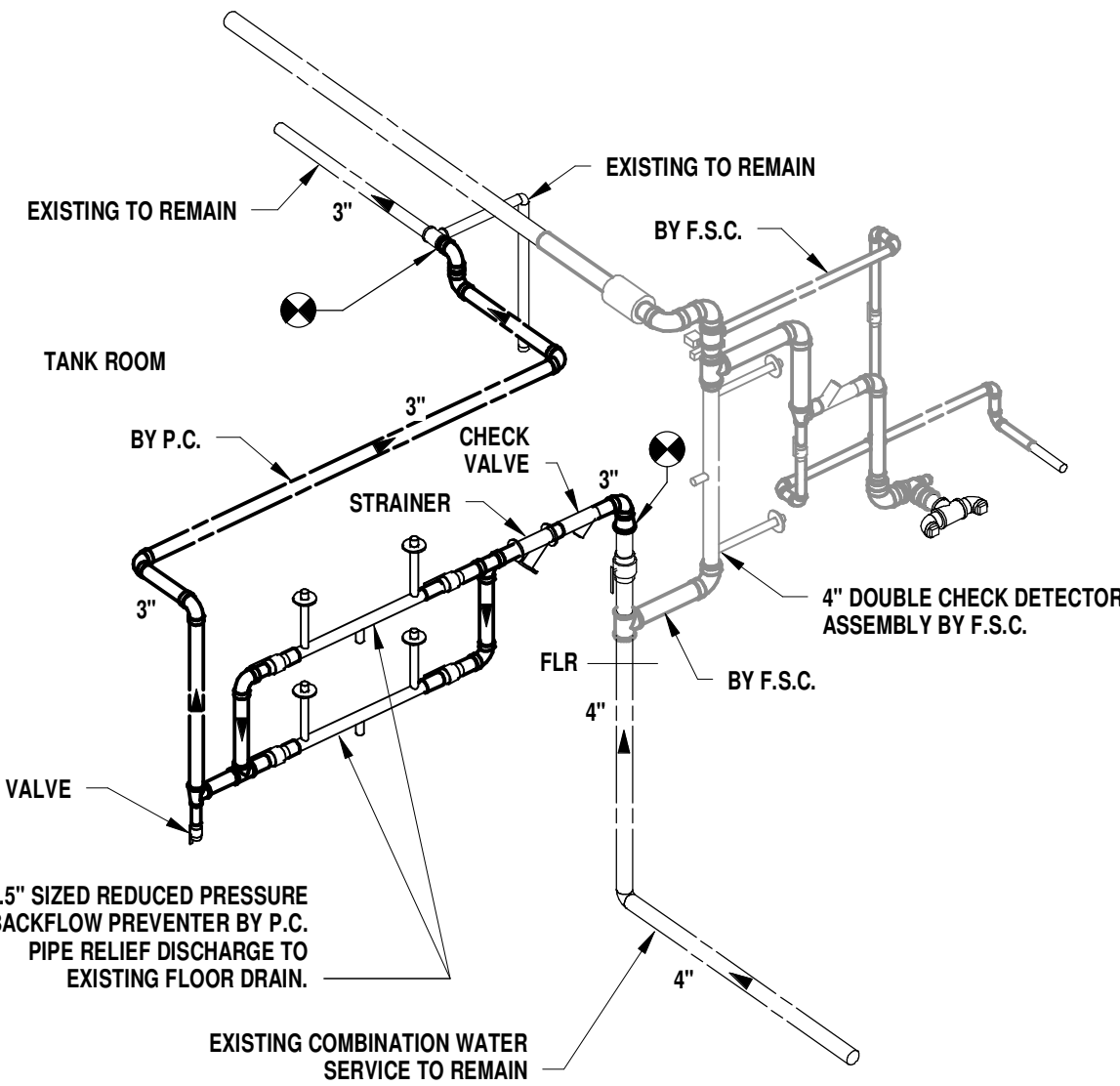
DOMESTIC WATER PIPING DIAGRAM

Scale: N.T.S.



SOIL, WASTE & VENT

Scale: N.T.S.



WATER SERVICE DIAGRAM

Scale: N.T.S.

INDEX OF DRAWINGS

SHEET	DESCRIPTION
P1	LEGEND, SCHEDULE, NOTES & DIAGRAMS
P2	DETAILS
212-P1	PARTIAL FIRST FLOOR PLAN - REMOVALS
212-P2	PARTIAL BASEMENT PLAN - NEW WORK
212-P3	PARTIAL FIRST FLOOR PLAN - NEW WORK

1	Addendum 2	04/23/2012
Revisions		Date

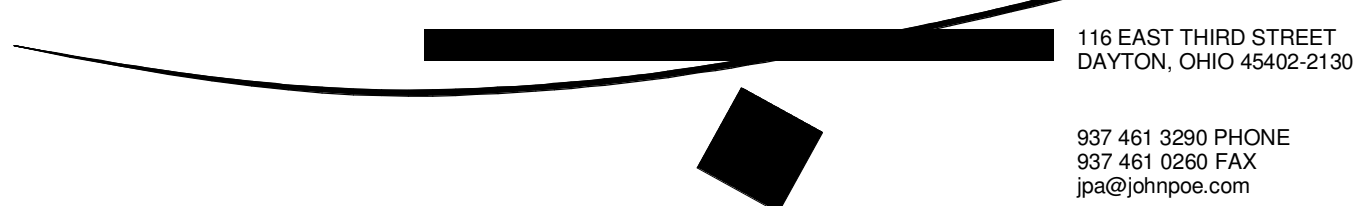
CONSULTANTS:

Heapy Engineering
Mechanical Electrical Commissioning Technology
Nationally Recognized Leader in Sustainability / LEED
1400 W Dorothy Lane, Dayton OH 45409-1310
Ph: 937-224-0861 Fax: 937-224-5777 www.heapy.com
Heapy Project No.: 2011-04011 Firm License No.: 01528



ARCHITECT/ENGINEERS:

JOHN POE ARCHITECTS



Drawing Title

LEGEND, SCHEDULE, NOTES & DIAGRAMS

Approved: Project Director

Project Title

FCA Rehab Building 212AB

Location

Chillicothe, Ohio

Date

02/10/2012

Checked

RLT

Drawn

DPB

Project No.

VA Project No. 538-12-101
JPA Project No. 11007.00

Building Number

212

Drawing Number

P1

Dwg. of

Office of
Construction
and Facilities
Management

