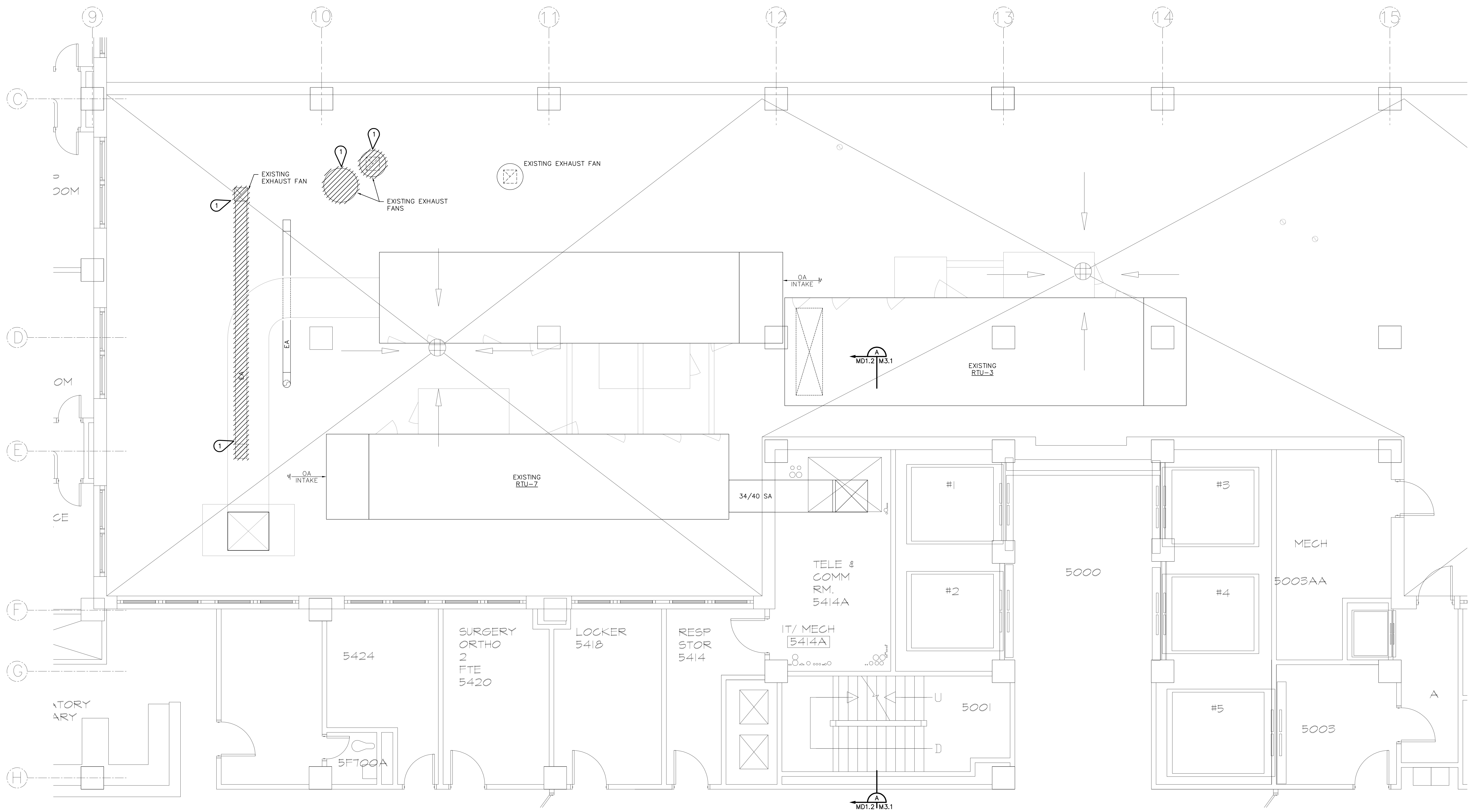


MECHANICAL KEYNOTES: (C)

1 REMOVE EXISTING EXHAUST FAN, CURB AND ALL ASSOCIATED EQUIPMENT. PATCH ROOF IN ACCORDANCE WITH ARCHITECTURAL SPECIFICATIONS. OWNER SHALL HAVE FIRST SALVAGE RIGHTS TO ALL REMOVED ITEMS. ALL WORK ASSOCIATED WITH THE EXHAUST FANS (EF-2 AND EF-3) AND DUCT REPLACEMENT FOR THE ETO STERILIZERS, ABATORS, AND STERILIZER EQUIPMENT ROOM MUST BE PERFORMED OVER A SINGLE THREE DAY PERIOD TO INCLUDE A SATURDAY AND SUNDAY. BOTH EXHAUST FANS AND THEIR RESPECTIVE AIR DISTRIBUTION SYSTEMS MUST BE FULLY OPERATIONAL WITH TAB WORK PERFORMED AT THE END OF THE THREE DAY PERIOD. THE CONTRACTOR SHALL PROVIDE THE OWNER WITH A MINIMUM OF 14 DAYS NOTICE PRIOR TO PERFORMING THE EXHAUST FAN AND DUCT REPLACEMENT.

one eighth inch = one foot
one quarter inch = one foot
one half inch = one foot
three eighths inch = one foot
one inch = one foot
three quarters inch = one foot
one and one half inches = one foot
two inches = one foot
three inches = one foot
four inches = one foot
six inches = one foot
eight inches = one foot
ten inches = one foot
twelve inches = one foot
fourteen inches = one foot
sixteen inches = one foot
eighteen inches = one foot
twenty inches = one foot
twenty four inches = one foot
twenty eight inches = one foot
thirty inches = one foot
thirty six inches = one foot
thirty eight inches = one foot
forty inches = one foot
forty four inches = one foot
forty eight inches = one foot
fifty inches = one foot
fifty four inches = one foot
fifty eight inches = one foot
sixty inches = one foot
sixty four inches = one foot
sixty eight inches = one foot
seventy inches = one foot
seventy four inches = one foot
seventy eight inches = one foot
eighty inches = one foot
eighty four inches = one foot
eighty eight inches = one foot
ninety inches = one foot
ninety four inches = one foot
ninety eight inches = one foot
one hundred inches = one foot



5TH FLOOR MECHANICAL DEMOLITION PLAN
SCALE: 1/4" = 1'-0"



Revisions		© 2000 Calvin L. Hinz Architects P.C. These plans are specifically designed for construction by Calvin L. Hinz Architects and are intended for no other purposes. Permission for use of this document in part or whole without written consent of Calvin L. Hinz Architects is prohibited.		IMPORTANT CONTRACTOR'S NOTE 1. ALL CONTRACTORS ARE RESPONSIBLE FOR REVIEWING ENTIRE SET OF DOCUMENTS TO DETERMINE THEIR FULL SCOPE OF WORK. CONTRACTOR SHALL NOT BE ALLOWED EXTRA COSTS DUE TO FAILURE TO REVIEW ENTIRE SET OF DOCUMENTS. 2. ANY USE OF THESE ELECTRONIC DRAWINGS OR SCALING OF THE PRINTED DOCUMENTS ARE DONE SO AT THE CONTRACTORS RISK.				ARCHITECT/ENGINEERS: Calvin L. Hinz Architects, P.C. 3705 North 200th Street Elkhorn, Nebraska 68022 Phone: 402.291.6941 Fax: 402.291.9193		 FARRIS ENGINEERING OMAHA LINCOLN DES MOINES COLORADO SPRINGS farris-uso.com COPYRIGHT This document and the information contained may not be reproduced or excerpted from without the express written permission of Farris Engineering, Inc. Unauthorized copying, disclosure or construction use are prohibited by the copyright law. 11239 Chicago Circle Omaha, Nebraska 68154 402.330.5900 402.330.5902		Drawing Title 5TH FLOOR MECHANICAL DEMOLITION PLAN		Project Title CORRECT NWIHCs SPD DEFICIENCIES- VA OMAHA DIVISION		Project Number 636-12-105B OMAHA PACKAGE ONE		Building Number ONE		Office of Construction and Facilities Management 	
Date										Approved Project Director GARY STUCKENSCHMIDT		CONSTRUCTION DOCUMENT (CD-3) SUBMITTAL 100% APRIL 13, 2012		Location VAMC Omaha, NE		Drawing Number MD1.2 Dwg. 7 of 16					
														Date APRIL 13, 2012		Checked BMS		Drawn LMB			