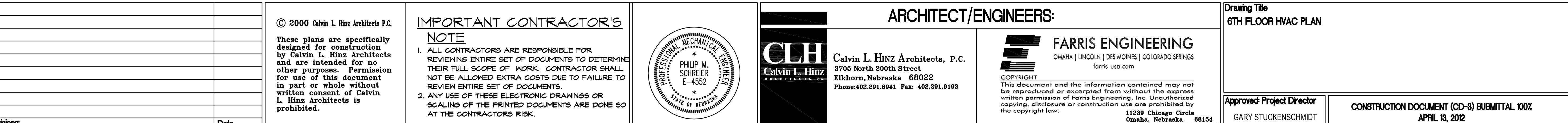
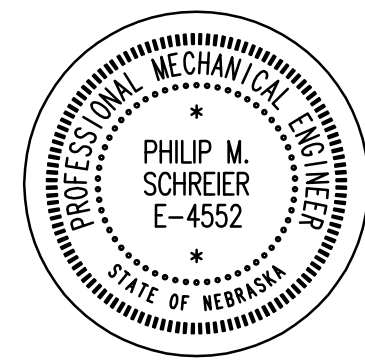


1. REFER TO SPECIFICATIONS FOR AIR FLOW PROFILE REQUIREMENTS PRIOR TO THE COMMENCEMENT OF WORK. REBALANCE ALL SUPPLY DIFFUSERS AND GRILLES CONNECTED TO RTU-7 MARKED "RB" AFTER RTU CHANGEOVER HAS BEEN COMPLETED. ALL WORK ASSOCIATED WITH RTU-3 TO RTU-7 CHANGEOVER SHALL BE PERFORMED OVER A SINGLE FOUR DAY PERIOD TO INCLUDE A SATURDAY AND SUNDAY. BOTH ROOFTOP UNITS AND THEIR RESPECTIVE AIR DISTRIBUTION SYSTEMS MUST BE FULLY OPERATIONAL WITH TAB WORK PERFORMED AT THE END OF THE FOUR DAY PERIOD. THE CONTRACTOR SHALL PROVIDE THE OWNER WITH A MINIMUM OF 30 DAYS NOTICE PRIOR TO PERFORMING THE RTU CHANGEOVER.



IMPORTANT CONTRACTOR'S NOTE

1. ALL CONTRACTORS ARE RESPONSIBLE FOR REVIEWING ENTIRE SET OF DOCUMENTS TO DETERMINE THEIR FULL SCOPE OF WORK. CONTRACTOR SHALL NOT BE ALLOWED EXTRA COSTS DUE TO FAILURE TO REVIEW ENTIRE SET OF DOCUMENTS.
2. ANY USE OF THESE ELECTRONIC DRAWINGS OR SCALING OF THE PRINTED DOCUMENTS ARE DONE SO AT THE CONTRACTORS RISK.



Calvin L. Hinz Architects, P.C.
3705 North 200th Street
Elkhorn, Nebraska 68022
Phone: 402.291.6941 Fax: 402.291.9193

FARRIS ENGINEERING
OMAHA | LINCOLN | DES MOINES | COLORADO SPRINGS
farris-usa.com

COPYRIGHT
This document and the information contained may not be reproduced or excerpted from without the express written permission of Farris Engineering, Inc. Unauthorized copying, disclosure or construction use are prohibited by the copyright law.

11239 Chicago Circle
Omaha, Nebraska

Approved: Project Director

Checked

Dwg. 11 of 16



Department of
Veterans Affairs