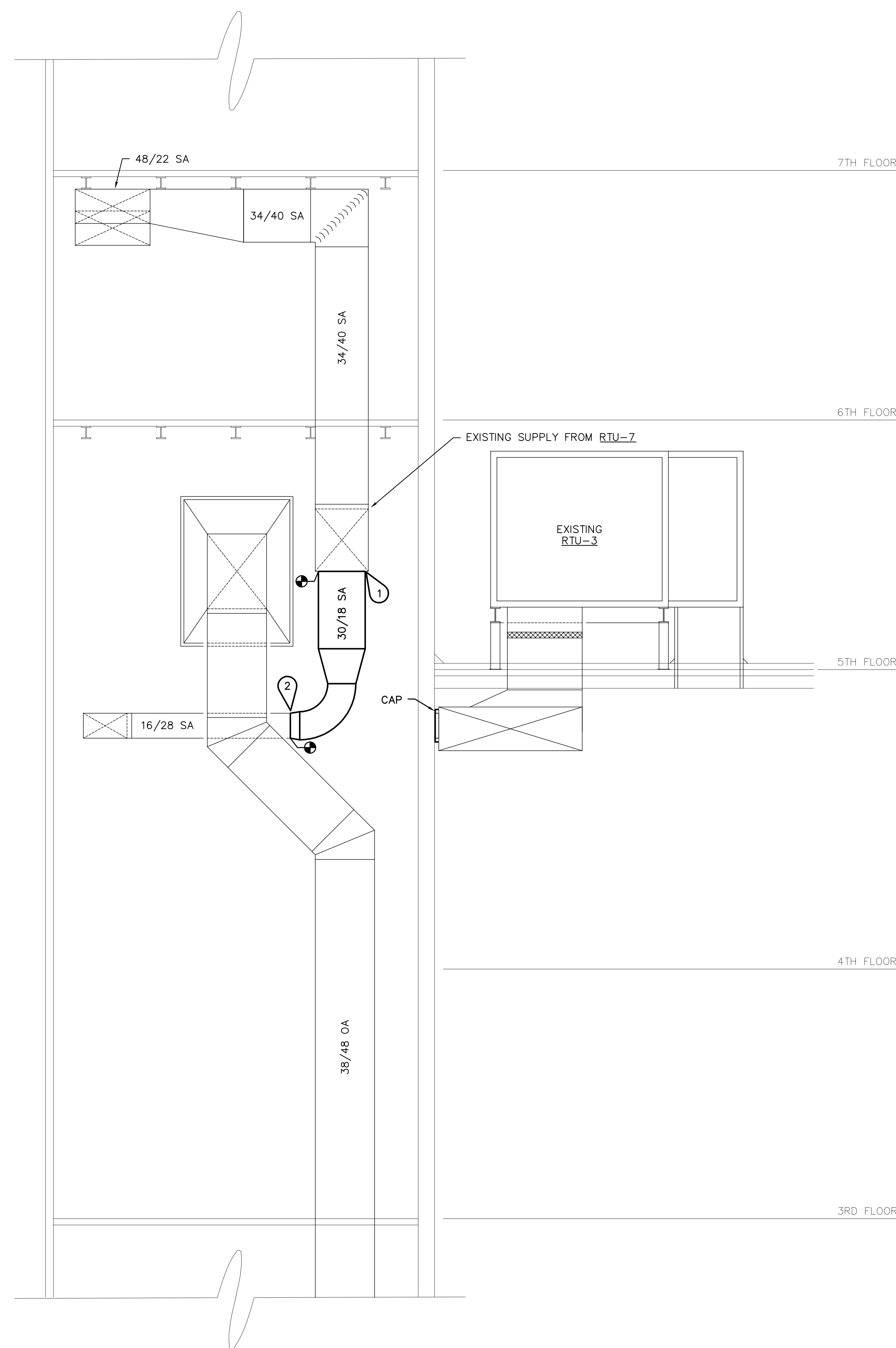


SECTION

M3.1 SCALE: 1/4" = 1'-0" MD1.1 M3.1  
MD1.2



2 SECTION A  
M3.1 SCALE: 1/4" = 1'-0" M1.1 M3.1  
M1.3

- ## MECHANICAL KEYNOTES:
1. CONNECT 30/18 SA TO EXISTING RTU-7, 34/40 SA DUCT.
  2. CONNECT 18/30 SA TO EXISTING 16/28 SA DUCT SERVING 4TH FLOOR SPD.
  3. DISCONNECT AND REMOVE 28/16 SA DUCT SHOWN HATCHED. ALL DEMO AND NEW DUCT INSTALLATION SHALL BE PERFORMED DURING EVENINGS OR WEEKENDS. PATCH WALL PENETRATION IN ACCORDANCE WITH ARCHITECTURAL SPECIFICATIONS. ALL WORK ASSOCIATED WITH RTU-3 TO RTU-7 CHANGEOVER SHALL BE PERFORMED OVER A SINGLE FOUR DAY PERIOD TO INCLUDE A TAB WORK PERFORMED AT THE ROOF TOP UNITS AND THEIR RESPECTIVE AIR DISTRIBUTION SYSTEMS MUST BE FULLY OPERATIONAL WITH TAB WORK PERFORMED AT THE END OF THE FOUR DAY PERIOD. THE CONTRACTOR SHALL PROVIDE THE OWNER WITH A MINIMUM OF 30 DAYS NOTICE PRIOR TO PERFORMING THE RTU CHANGEOVER.

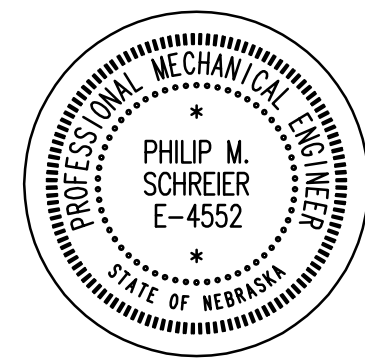
[illegible]

© 2000 Calvin L. Hinz Architects P.C.  
These plans are specifically designed for construction by Calvin L. Hinz Architects and are intended for no other purposes. Permission for use of this document in part or whole without written consent of Calvin L. Hinz Architects is prohibited.

### IMPORTANT CONTRACTOR'S

NOTE

1. ALL CONTRACTORS ARE RESPONSIBLE FOR REVIEWING ENTIRE SET OF DOCUMENTS TO DETERMINE THEIR FULL SCOPE OF WORK. CONTRACTOR SHALL NOT BE ALLOWED EXTRA COSTS DUE TO FAILURE TO REVIEW ENTIRE SET OF DOCUMENTS.
2. ANY USE OF THESE ELECTRONIC DRAWINGS OR SCALING OF THE PRINTED DOCUMENTS ARE DONE SO AT THE CONTRACTORS RISK.



**Calvin L. HINZ Architects, P.C.**  
3705 North 200th Street  
Elkhorn, Nebraska 68022  
Phone: 402.291.6941 Fax: 402.291.9193



**FARRIS ENGINEERING**  
OMAHA | LINCOLN | DES MOINES | COLORADO SPRINGS  
farris-usa.com

**COPYRIGHT**  
This document and the information contained may not be reproduced or excerpted from without the express written permission of Farris Engineering, Inc. Unauthorized copying, disclosure or construction use are prohibited by the copyright law.  
11239 Chicago Circle

11239 Chicago Circle  
Omaha, Nebraska 68154  
402.330.5900 402.330.5903

Drawing Title	MECHANICAL SECTIONS
---------------	---------------------

Approved: Project Director  
GARY STUCKENSCHMIDT

CONSTRUCTION DOCUMENT (CD-3) SUBMITTAL 100%  
APRIL 13, 2012

Project Title  
CORRECT NWHCS SPD DEFICIENCIES-  
VA OMAHA DIVISION

Location	VAMC Omaha, NE
----------	----------------

Date	APRIL 13, 2012
------	----------------

Checked	BMS
---------	-----

Drawn	LMB
-------	-----

Project Number  
636-12-105B  
OMAHA PACKAGE ONE

Building Number  
ONE

Drawing Number  
MO

**M3.1**

Page 12 of 16

Office of  
Construction  
and Facilities  
Management

