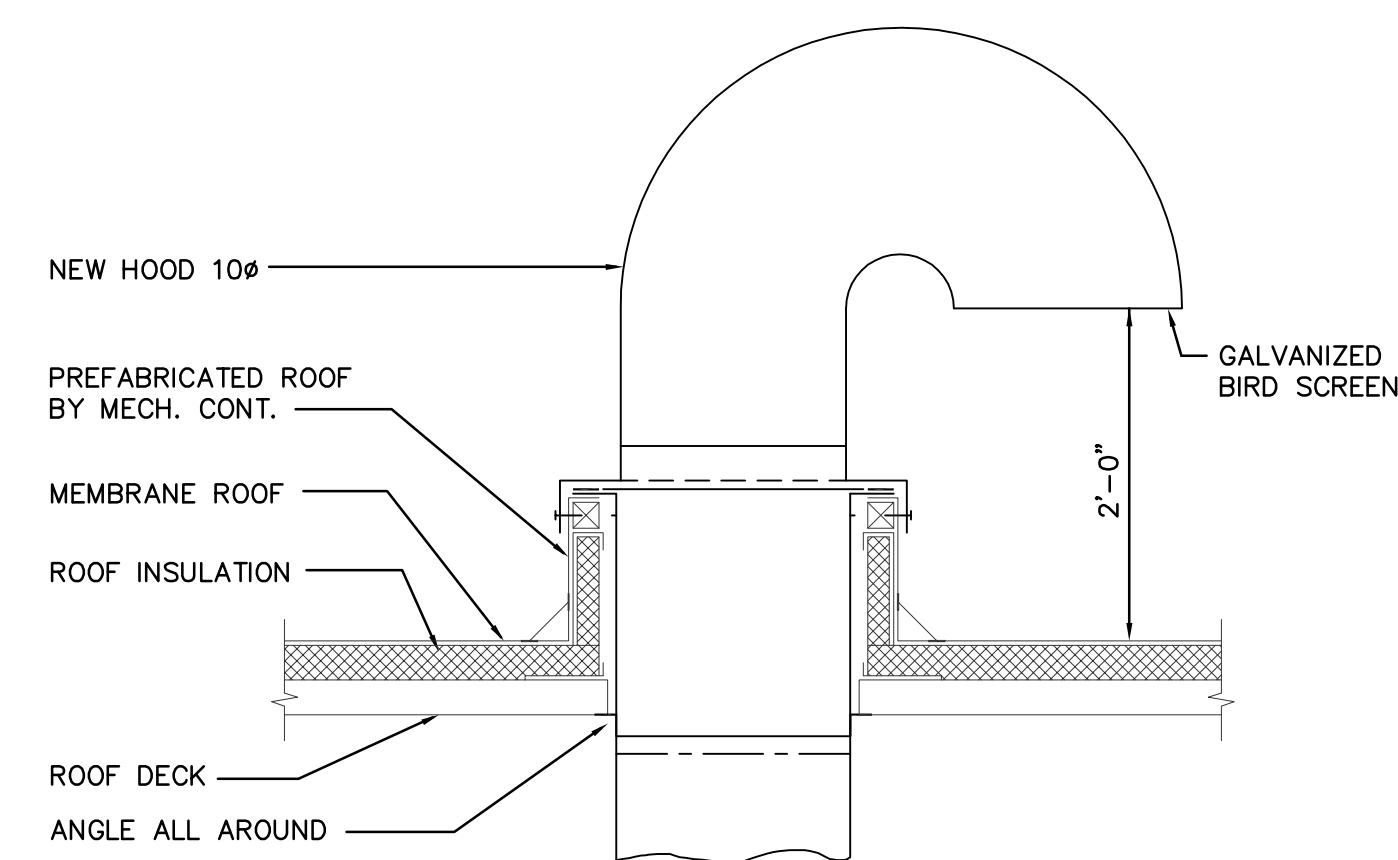
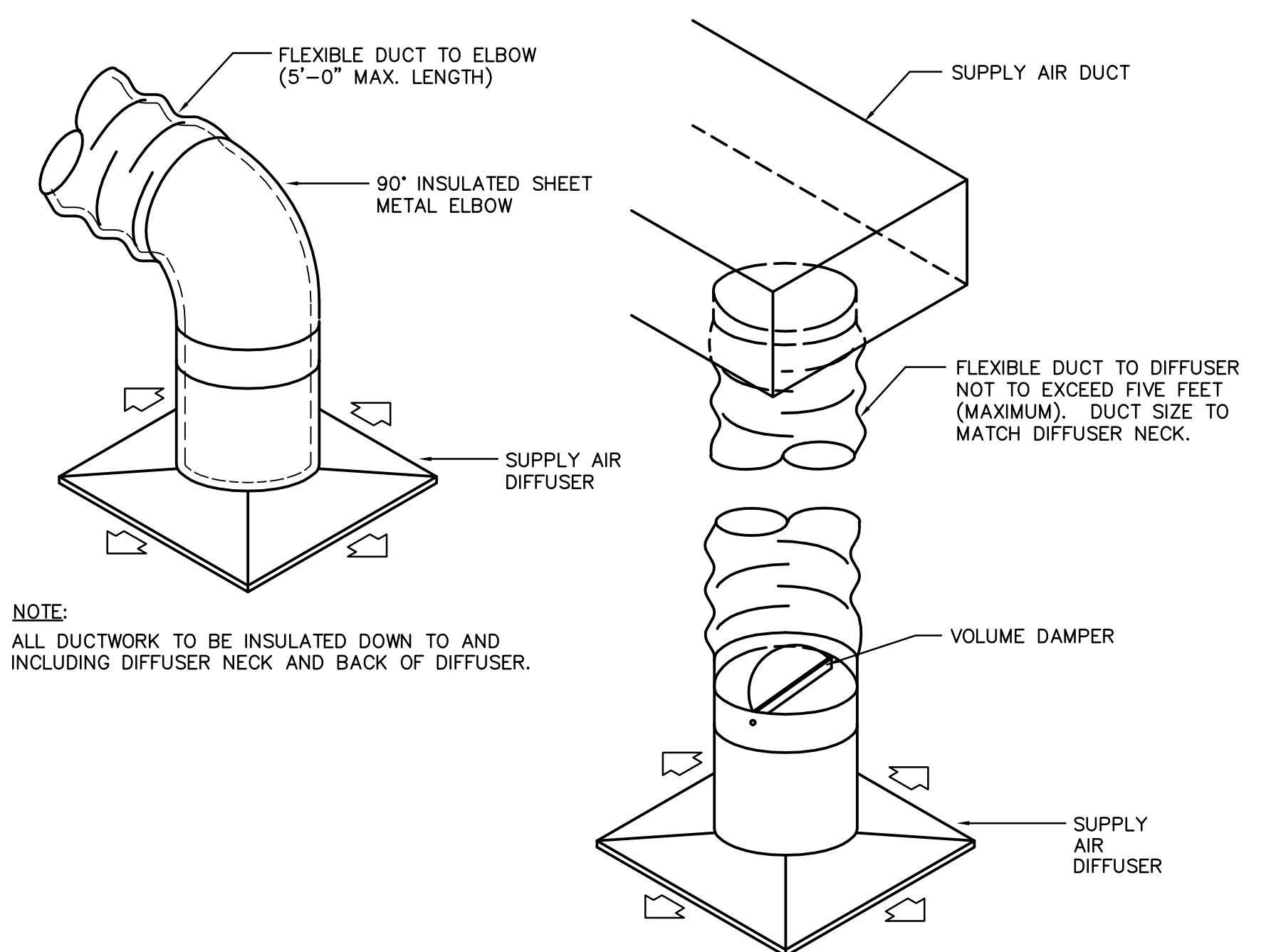
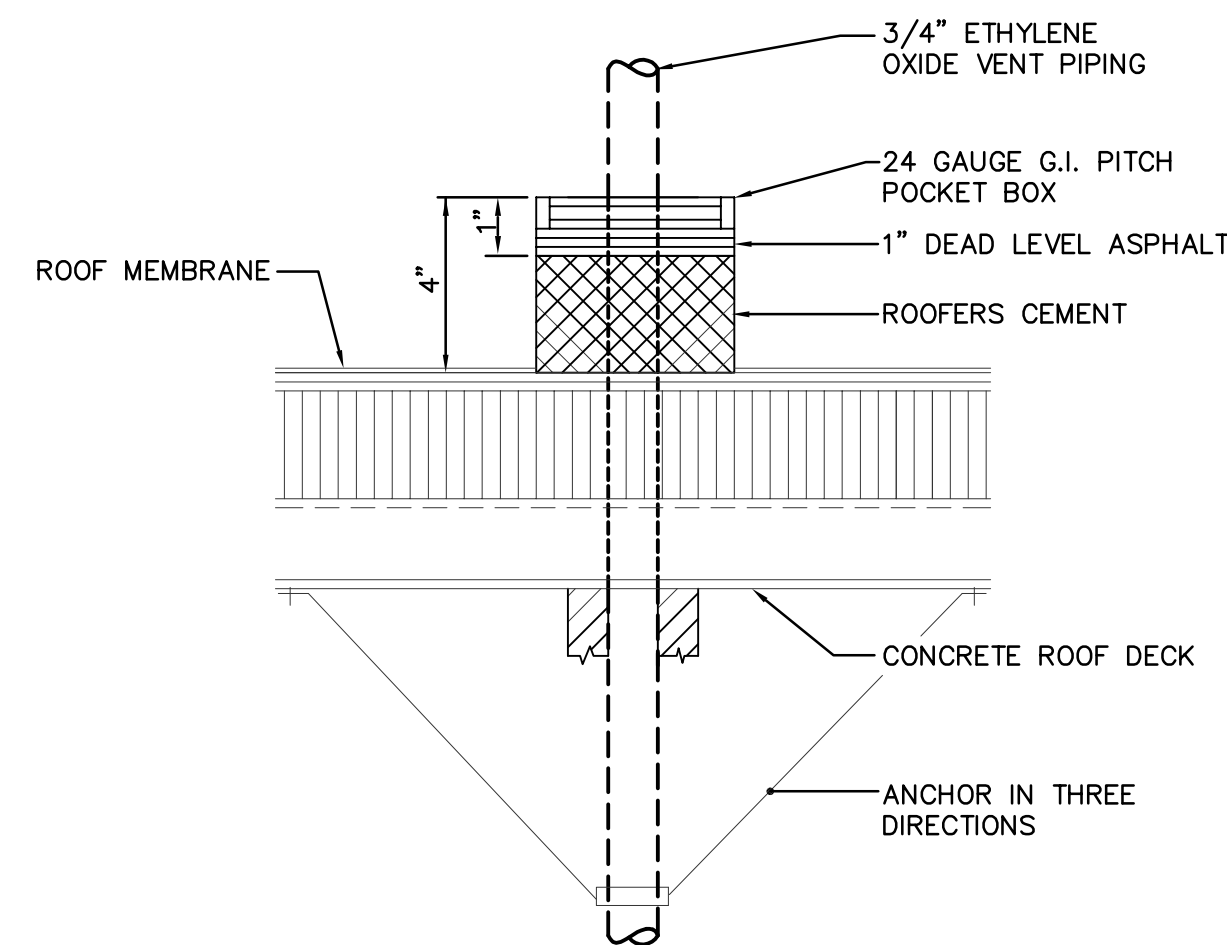





- ① DUCT SPLITS TO FLOW SHALL BE PROPORTIONATE TO SUM TOTAL OF BRANCH DUCT CFM SHOWN ON FLOOR PLANS.
- ② ELBOW RADIUS, TAKE-OFF ANGLE AND TRANSITION ANGLE SHALL BE PER SMACNA RECOMMENDATIONS.
- ③ ROUND DUCT TAKE-OFFS FROM RECTANGULAR DUCTS SHALL BE MADE WITH A HIGH EFFICIENCY FLANGE AND GASKETED FITTING. THE MOUNTING GROOVE SHALL BE SO CONSTRUCTED AS TO ENSURE CONSTANT FIT CONTROL. BALANCING DAMPERS SHALL BE FACTORY INSTALLED WITH SPRING LOADED RETRACTABLE BEARINGS AND A POSITIVE LOCKING WING NUT FOR EASY READJUSTMENT WHEN NEEDED. FITTING SHALL BE FULLY GASKETED ON ALL FLANGES AND CORNERS FOR HIGH EFFICIENCY TAKE-OFF FITTINGS. PROVIDE SHOP DRAWINGS FOR ACCEPTANCE OF PRODUCT.
- ④ ALL ELBOWS SHALL BE RADIUS TYPE, EXCEPT WHERE SPACE RESTRICTIONS NECESSITATE USING 90° MITERED VANED ELBOWS.
- ⑤ VOLUME DAMPERS SHALL BE PROVIDED ON ALL LOW PRESSURE SUPPLY DUCT BRANCHES AND ON ALL RETURN AND EXHAUST DUCT BRANCHES.



		© 2000 Calvin L. Hinz Architects P.C. These plans are specifically designed for construction by Calvin L. Hinz Architects and are intended for no other purposes. Permission for use of this document in part or whole without written consent of Calvin L. Hinz Architects is prohibited.		<u>IMPORTANT CONTRACTOR'S NOTE</u> 1. ALL CONTRACTORS ARE RESPONSIBLE FOR REVIEWING ENTIRE SET OF DOCUMENTS TO DETERMINE THEIR FULL SCOPE OF WORK. CONTRACTOR SHALL NOT BE ALLOWED EXTRA COSTS DUE TO FAILURE TO REVIEW ENTIRE SET OF DOCUMENTS. 2. ANY USE OF THESE ELECTRONIC DRAWINGS OR SCANNING OF THE PRINTED DOCUMENTS ARE DONE SO AT THE CONTRACTORS RISK.				<u>ARCHITECT/ENGINEERS:</u> <div style="display: flex; justify-content: space-between;"> <div style="width: 45%;">  <p>Calvin L. HINZ Architects, P.C. 3705 North 200th Street Rikhorh, Nebraska 68022 Phone: 402.391.0941 Fax: 402.391.9193</p> </div> <div style="width: 45%;">  <p>FARRIS ENGINEERING OMAHA LINCOLN DES MOINES COLORADO SPRINGS farris-usa.com</p> </div> </div>		Drawing Title MECHANICAL DETAILS		Project Title CORRECT NWHCS SPD DEFICIENCIES- VA OMAHA DIVISION		Project Number 636-12-105B OMAHA PACKAGE ONE Building Number ONE		Office of Construction and Facilities Management	
Revisions:		Date				Location VAMC Omaha, NE		Drawing Number <div style="font-size: 2em; font-weight: bold;">M5.1</div>		Date APRIL 13, 2012		Checked BMS		Drawn LMB		Department of Veterans Affairs	
						Approved Project Director GARY STUCKENSCHMIDT		CONSTRUCTION DOCUMENT (CD-3) SUBMITTAL 1002 APRIL 13, 2012		Date APRIL 13, 2012		Checked BMS		Drawn LMB		Dwg. 13 of 16	