

© 2012 Calvin L. Hinz Architects P.C.
These plans are specifically designed for construction by Calvin L. Hinz Architects and are intended for no other purpose. Permission for use of this document in part or whole without the written consent of Calvin L. Hinz Architects is prohibited.

© 2012 Calvin L. Hinz Architects P.C.
These plans are specifically designed for construction by Calvin L. Hinz Architects and are intended for no other purposes. Permission for use of this document in part or whole without written consent of Calvin L. Hinz Architects is prohibited.

1. ALL CONTRACTORS ARE RESPONSIBLE FOR REVIEWING ENTIRE SET OF DOCUMENTS TO DETERMINE THEIR FULL SCOPE OF WORK. CONTRACTOR SHALL NOT BE ALLOWED EXTRA COSTS DUE TO FAILURE TO REVIEW ENTIRE SET OF DOCUMENTS.
2. ANY USE OF THESE ELECTRONIC DRAWINGS OR SCALING OF THE PRINTED DOCUMENTS ARE DONE SO AT THE CONTRACTORS RISK.



ARCHITECT/ENGINEERS:

Calvin L. Hinz Architects, P.C.
3705 North 200th Street
Elkhorn, Nebraska 68022
Phone: 402.291.6941 Fax: 402.291.9193



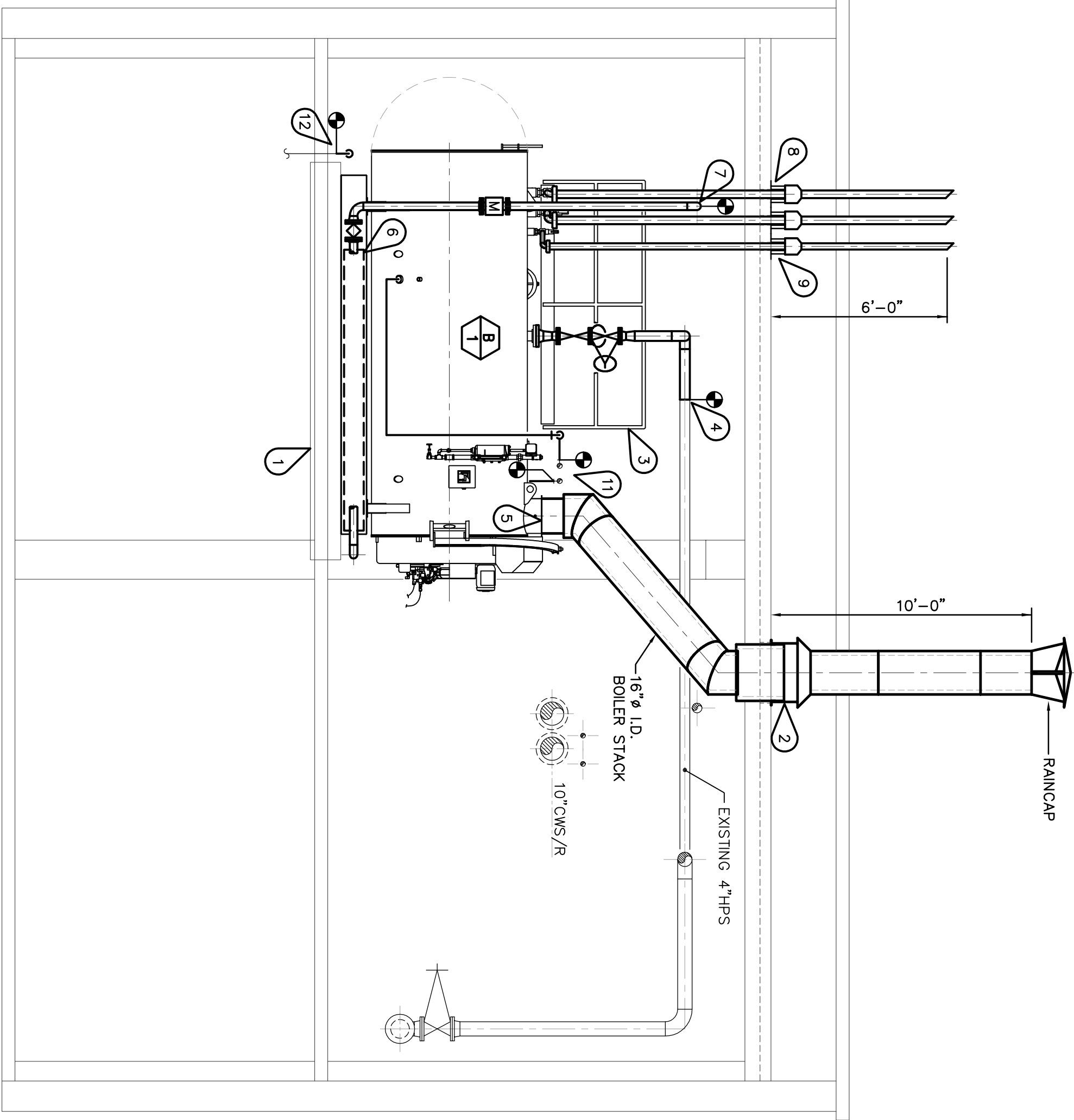
Drawing Title
MECHANICAL – SECTIONS

Approved Project Director
KEVIN HUSTELL

CONTRACT DOCUMENTS (CD-1) SUBMITTAL_100X
APRIL 19, 2012

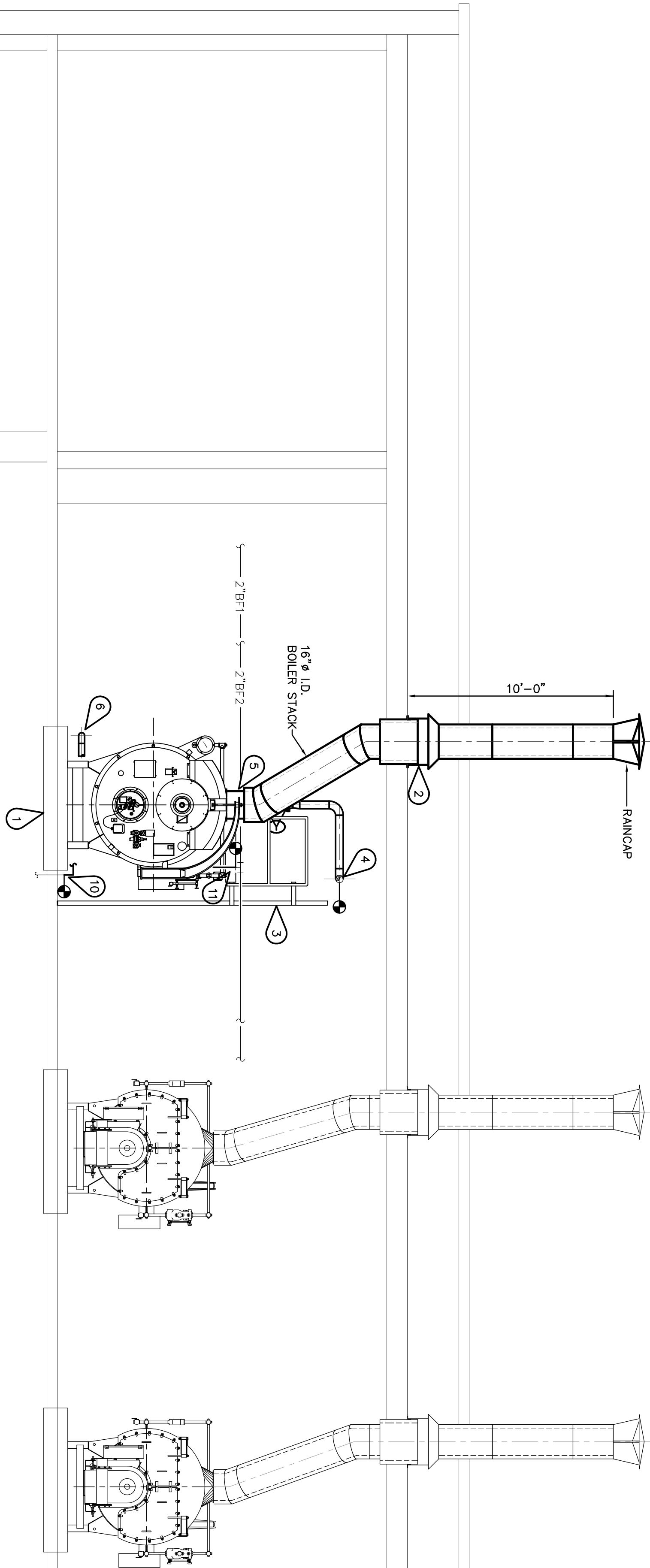
Project Title	RENOVATE STEAM SYSTEM PHASE 1	Project Number	636-12-10
Location	VAMC Grand Island, Nebraska	Building Number	7
Date	April, 19, 2012	Drawn	7MP201
Checked	G.T.K.	Drawn	7MP201
C.W.K.		Drawn	7MP201

Office of
Construction
and Facilities
Management



SECTION

SCALE: $\frac{1}{4}$ INCH = 1 FOOT



SECTION

SCALE: $\frac{1}{4}$ INCH = 1 FOOT

12" 0 5'

- ## MECHANICAL KEYNOTES: (C)
- 1 EXISTING CONCRETE HOUSEKEEPING PAD.
 - 2 INSTALL FACTORY-FABRICATED, PRE-ENGINEERED STACK. CONSULT STACK MANUFACTURER FOR RECOMMENDED INSTALLATION METHODS AND SEALANTS FOR INSTALLATION. SUPPORT STACK AT ROOF LINE. PROVIDE 6"X6" WIRE WHEN REQUIRED PER STACK MANUFACTURER'S REQUIREMENTS.
 - 3 ACCESS PLATFORM AND LADDER, REFER TO ARCHITECTURAL DRAWINGS.
 - 4 CONNECT AND INSTALL NEW 4-INCH IPS PIPING TO EXISTING 4-INCH HPS PIPING AND ROUTE TO NEW BOLLER B-1 AS SHOWN.
 - 5 PROVIDE FACTORY STACK DANGER STRIP, WELD TO BOLLER BURNER SYSTEM AS RECOMMENDED BY BOLLER MANUFACTURER.
 - 6 NATURAL GAS PIPING. REFER TO FLOW DIAGRAM ON SHEET 3602G.
 - 7 CONNECT AND INSTALL NEW 3-INCH GAS PIPING TO EXISTING 3-INCH GAS PIPING.
 - 8 PROVIDE AND INSTALL NEW SAFETY RELIEF VENT PIPING, REUSE EXISTING ROOF OPENING MOUNTED AS REQUIRED. VENTS TO BE SIZED PER ASME TYPICAL OF 2.
 - 9 PROVIDE AND INSTALL NEW SAFETY RELIEF VENT PIPING, NEW ROOF PENETRATION REQUIRED. VENTS TO BE SIZED PER ASME.
 - 10 CONNECT AND INSTALL NEW DIEU OIL RETURN (FOR) TO EXISTING (FOR) AT CONVECTION BOLLER B-1. PROVIDE ISOLATION VALVES AT CONVECTION POINTS.
 - 11 CONNECT AND INSTALL NEW DRY TO EXISTING BWV AND CONNECT TO NEW BOLLER B-1. TYPICAL 3" X 3" BWR CONNECTIONS.
 - 12 CONNECT AND INSTALL NEW BOLLER BLOWDOWN PIPING (BBD) TO EXISTING BBD PIPING AND CONNECT TO NEW BOLLER B-1. PROVIDE FLOW DIAGRAM ISOLATION BY CAPPING LINES TO ALLOW PLANT TO REMAIN OPERATION.