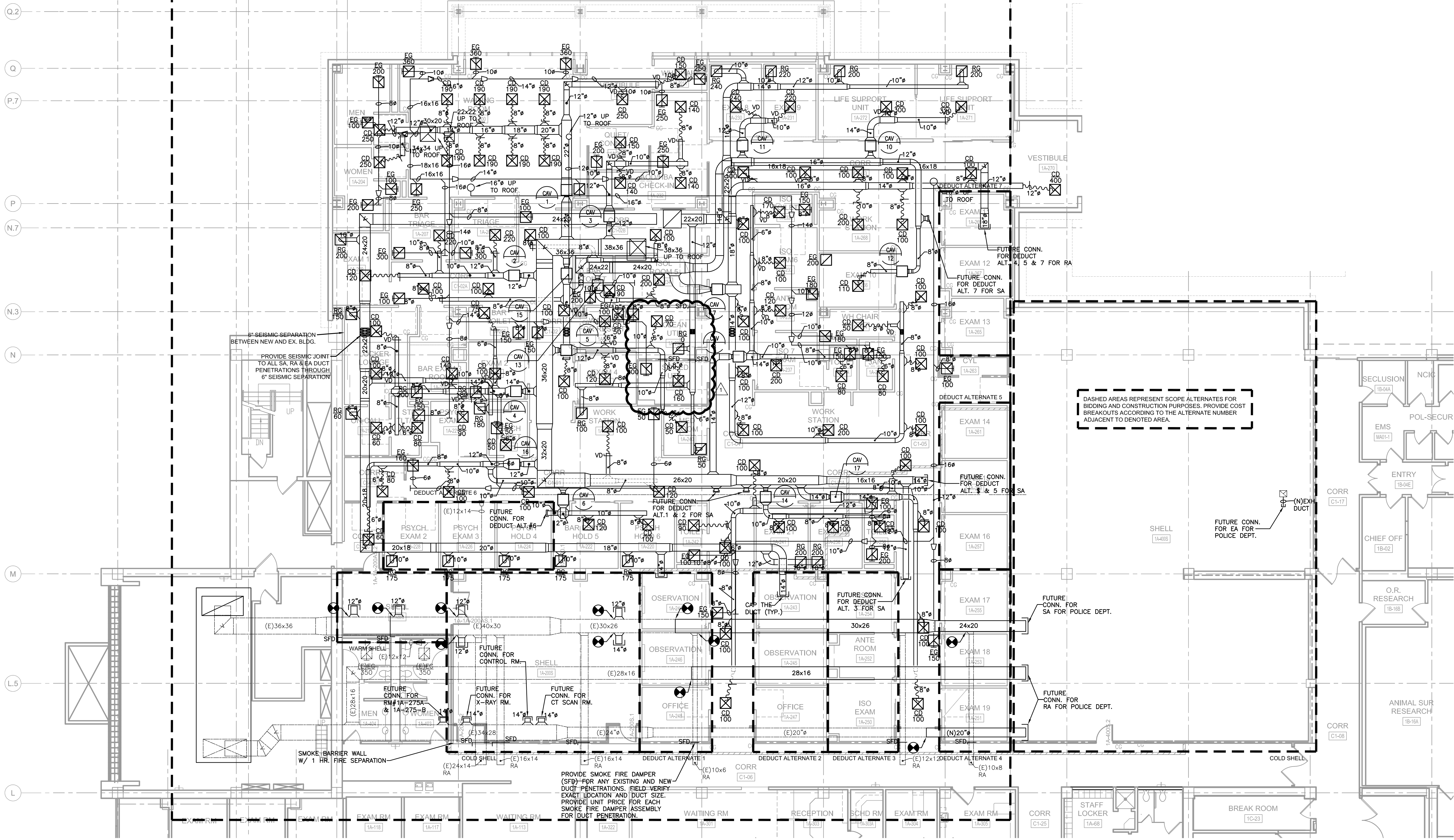


26 25.5 25.4 25 24.9 24 23 22 21 20.5 20 19.5 19

PHASE-3 ALTERNATE: HVAC FIRST FLOOR NEW DUCT WORK (EXPAND EMERGENCY DEPT.)

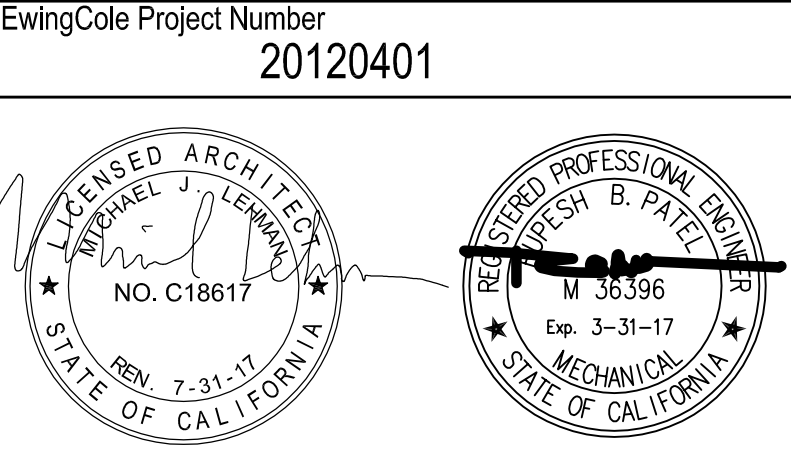


1 HVAC FIRST FLOOR NEW DUCTWORK PLAN - PHASE 3 ALT
1/8" = 1'-0"

1	ADDENDUM 001	05.12.16
2	CONSTRUCTION DOCUMENT ISSUE	02.15.16
3	Revisions:	Date

ARCHITECTS/ENGINEERS
PRINCIPAL
Michael Lehman, AIA
PROJECT MANAGER
Ruby Carr, LEED AP
PROJECT ARCH/DESIGNER
Lisa Alzona, RA, LEED AP
PROJECT ENG/INT DESIGNER
Rupesh Patel, P.E.

EWING COLE
15231 Laguna Canyon Road, Suite 200
Irvine, CA 92618
Tel: 949-417-7550 Fax: 949-585-9391



CONSULTANTS

Approved: VA Project Engineer	Approved: Chief, Env. of Care Dept.
Approved: Chief, Project Section	Approved: Chief, Env. Management Dept.
Approved: Chief, Maint., & Operations Office	Approved: Dir., Facilities Management
Approved: Chief, Engineering Dept.	Approved: Chief, Medical Officer

Drawing Title HVAC FIRST FLOOR NEW DUCTWORK PLAN - PHASE 3 ALT
Approved: VP, Administration Support
Approved: C.E.O.

Project Title VA Loma Linda Healthcare System Expand Emergency Department
Location 11201 BENTON STREET LOMA LINDA, CA 92357
Date 05.12.16
Checked RP
Drawn AG

Project Number 605-330
Building Number 1
Drawing Number MD-202
Dwg. of

Office of
Construction
and Facilities
Management

ISSUED FOR 100% SUBMITTAL
CONSTRUCTION DRAWINGS
Copyright © 2009 by EWMCOLE