

PART VI

SCHEDULE E

Part VI: Schedule E – Room Finish, Door & Hardware  
Section 1 -- Page 1 of 27

<b>SECTION 1</b>	<b>ROOM FINISH, DOOR AND HARDWARE SCHEDULE--GENERAL</b>	<b>3</b>
1.1	ROOM FINISHES, DOOR AND HARDWARE SCHEDULE	3
1.1.1	USE OF SCHEDULE E	3
1.1.2	OTHER REQUIREMENTS	5
1.1.3	WALLCOVERING PROTECTIVE (WP), RIGID PVC SHEET	5
1.1.4	STAIRWAYS	5
1.2	DOORS	6
1.2.1	DOORS	6
1.2.2	DOOR TYPES	7
1.2.3	DOOR SIZES	8
1.3	FINISH HARDWARE	9
1.3.1	GENERAL	9
1.3.2	BUTT HINGES	9
1.3.3	CONTINUOUS HINGES	10
1.3.4	DOOR CLOSING DEVICES	11
1.3.5	DOOR STOPS	11
1.3.6	LOCKS AND LATCHES	12
1.3.7	PUSH-BUTTON COMBINATION LOCKS	12
1.3.8	ELECTROMAGNETIC LOCKS	13
1.3.9	CARD READERS	14
1.3.10	ELECTRIC STRIKES	14
1.3.11	KEYS	14
1.3.12	KEY CABINET	15
1.3.13	ARMOR PLATES, COMBINATION KICK-MOP PLATES AND DOOR EDGING	15
1.3.14	EXIT DEVICES	16
1.3.15	WEATHERSTRIPS (FOR EXTERIOR DOORS)	16
1.3.16	MISCELLANEOUS HARDWARE	16
1.3.17	PADLOCKS FOR VARIOUS DOORS, GATES AND HATCHES	17
1.3.18	HARDWARE SETS	17

**SECTION 2 SCHEDULE E**

## PART VI SCHEDULE E--ROOM FINISH, DOORS & HARDWARE

### SECTION 1 ROOM FINISH, DOOR AND HARDWARE SCHEDULE--GENERAL

Schedule E lists each type of space or room required in the CMOP. The following information is listed for each space in the Schedule:

Department, Area and Function

Floor, Wall and Ceiling Finishes

Door Symbol and Hardware Set

If the Lessor believes that there are spaces or conditions not included in this Schedule, the question shall be referred to the Contracting Officer.

**Note: Common areas or building service areas that are indicated in Schedule E and are not included in the NUSF leased by VA are specifically excluded from the quantities listed in Schedule C.**

#### 1.1 ROOM FINISHES, DOOR AND HARDWARE SCHEDULE

##### 1.1.1 USE OF SCHEDULE E

**THE REQUIREMENTS IN THIS SCHEDULE APPLY TO ALL SPACES TO BE OCCUPIED BY VA IN THE CMOP. LESSOR SHALL PROVIDE MATERIALS, FINISHES, DOORS, FRAMES, AND HARDWARE IN ACCORDANCE WITH THIS SCHEDULE AND THE REQUIREMENTS SPECIFIED IN THIS SFO.**

Lessor shall provide each space with door(s) of the type and size as listed in Schedule E with hardware as noted. Doors and hardware requirements are indicated by their respective door symbols and hardware set numbers in this Schedule. Additional requirements are defined in Paragraph 1.3, "Doors and Hardware".

The Lessor shall provide room finishes in each room in accordance with Schedule E. Finishes are shown in the schedule for the floor, base, wainscot, wall, and ceiling surfaces for each room or space. The following are abbreviations used for materials and codes throughout the room finishes, door, and hardware schedule. The Lessor shall coordinate abbreviations used in the construction documents prepared by the Lessor with the abbreviations and symbols used in this SFO.

ADO	Automatic Door Operator
AF	Access Flooring
AT	Acoustical Ceiling (Tile)
AT(SP)	Acoustical Ceiling (with Sprayed Plastic Finish)
AT(TG)	Acoustical Ceiling (with Tegular Edge)

**Part VI: Schedule E – Room Finish, Door & Hardware  
Section 1 -- Page 3 of 27**

Lessor \_\_\_\_\_ Gov't. \_\_\_\_\_

\_\_\_\_\_ of \_\_\_\_\_ Pages

AWF	Acoustical Wall Fabric (Tackable)
AWP	Acoustical Wall Panel
BP	Brick Pavers (Unit Pavers)
BR	Brick (Unit Masonry)
C	Concrete
CMU	Concrete Masonry Units (Unit Masonry)
CP	Carpet (without Cushion Broadloom)
CPT	Carpet Tile
CT	Ceramic Tile (Floor, Base, and Wall)
EFTR	Existing Finish to Remain
EPY	Epoxy (Coatings)
ERF	Epoxy Resinous Flooring
EX	Existing
EXP	Exposed
GL	Glass (Glazing)
GWB	Gypsum Wallboard Systems
HW	Hardware Set (Finish or Builders Hardware)
LM	Latex Mastic Flooring
MAT	Material
MC	Multi-Color Coating
NF	Natural Finish
NO	Number
P	Paint (Exterior, Interior, Transparent Finishes)
PC	Precast (Architectural Precast Concrete Panels)
PCP	Portland Cement Plaster
PFW	Polypropylene Fabric Wallcovering
PL	Plaster
PUT	Polyurethane
QT	Quarry Tile
RAF	Resilient Athletic Flooring
RB	Resilient Base (Rubber, Vinyl)
RF	Raised Rubber Flooring

**Part VI: Schedule E – Room Finish, Door & Hardware**  
**Section 1 -- Page 4 of 27**

RSF	Resilient Sheet Flooring
SC	High Build Glazed Coating (Special Coating)
SP	Special Faced
SPEC	Special (Architect's Choice)
ST	Stone (Cast)
TT	Terrazzo Tile (Plastic Matrix)
VCT	Resilient Tile Flooring (Vinyl Composition Tile)
VP	Veneer Plaster
W	Wallcovering (Vinyl Coated Fabric)
WB	Wall Border
WD	Wood
WP	Wallcovering Protective (Rigid PVC Sheet)
WSF	Welded Seam Sheet Flooring

**1.1.2 OTHER REQUIREMENTS**

**A. Safety Glass**

There are two (2) types of safety glass that may be required in Interior Spaces; these are:

- (1) *Laminated Fire Glass shall be used in fire rated assemblies*
- (2) *Tempered Glass ("T") shall be used in all other Observations Windows and Doors with vision panels, including side lights.*

**B. Wall Protection at Drinking Fountains and Lavatories**

Provide vinyl wall covering behind Drinking Fountain Alcoves where wallboard or plaster finish occur and behind lavatories and end walls in examination rooms, treatment rooms, etc. at a minimum 50 inches wide (or terminating at the nearest inside corner). The vinyl wall covering shall go from base to ceiling.

**1.1.3 WALLCOVERING PROTECTIVE (WP), RIGID PVC SHEET**

Install rigid PVC sheet wall protection at locations indicated in Schedule E (indicated by HD GWB-P) over primed GWB. Provide impact-resistant GWB under wallcovering of 0.060-inch or greater thickness. Do not seam within 24 inches of internal or external corners. Install covering before installation of bases, cabinets, hardware, or items attached to or spaced slightly from wall surface. Do not install covering more than 1/4 inch below top of resilient base. Terminate top of wallcovering at chair rail [36 inches above finished floor].

**1.1.4 STAIRWAYS**

In stairways use Molded Rubber Treads on stairs and Resilient Tile (VCT) on floor landings and rubber tile on intermediate landings except for stairs exposed to the weather or those in strictly utilitarian areas such as shops, building service equipment rooms, etc.

**Part VI: Schedule E – Room Finish, Door & Hardware**  
**Section 1 -- Page 5 of 27**

**1.2 DOORS**

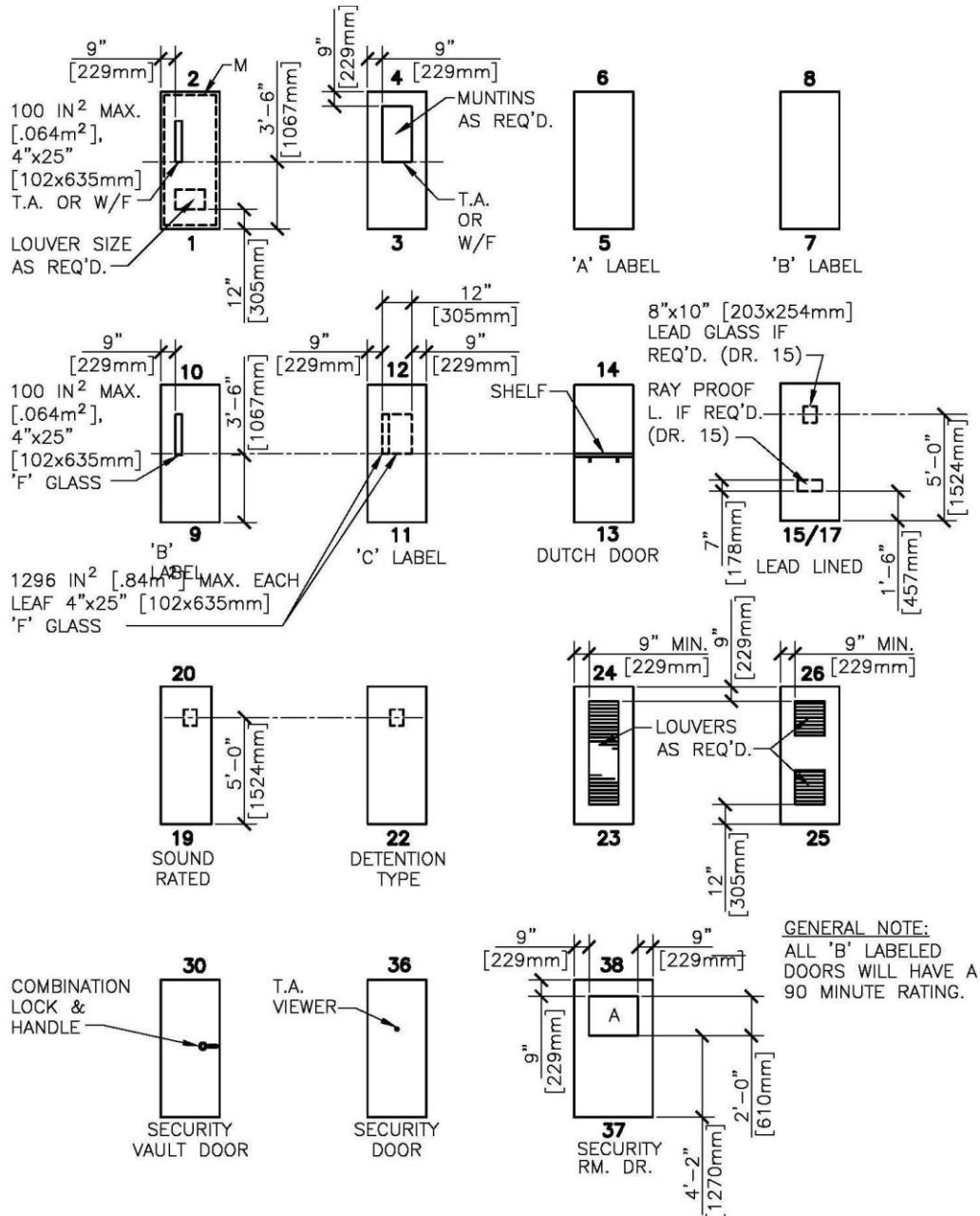
**1.2.1 DOORS**

Reference the Schedule E Door Schedule and Schedule E Door Elevations.

For additional door requirements see Architectural Criteria in Sections 6 and 7 in Part I of the SFO.

Door Swing: Doors to Housekeeping Aids Closets (HAC) shall open out. HAC doors shall swing out 180o where possible.

1.2.2 DOOR TYPES



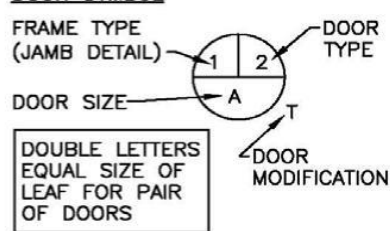
1.2.3 DOOR SIZES

DOOR SIZES									
MK	WIDTH		HEIGHT		MK	WIDTH		HEIGHT	
	IN	[mm]	IN	[mm]		IN	[mm]	IN	[mm]
A	1'-6"	[457]	6'-8"	[2032]	N	2'-0"	[610]	7'-0"	[2134]
B	2'-0"	[610]	6'-8"	[2032]	O	2'-2"	[660]	7'-0"	[2134]
C	2'-2"	[660]	6'-8"	[2032]	P	2'-4"	[711]	7'-0"	[2134]
D	2'-4"	[711]	6'-8"	[2032]	Q	2'-6"	[762]	7'-0"	[2134]
E	2'-6"	[762]	6'-8"	[2032]	R	2'-8"	[813]	7'-0"	[2134]
F	2'-8"	[813]	6'-8"	[2032]	S	3'-0"	[914]	7'-0"	[2134]
G	2'-10"	[864]	6'-8"	[2032]	T	3'-4"	[1016]	7'-0"	[2134]
H	3'-0"	[914]	6'-8"	[2032]	U	3'-6"	[1067]	7'-0"	[2134]
I	3'-2"	[965]	6'-8"	[2032]	V	3'-8"	[1118]	7'-0"	[2134]
J	3'-4"	[1016]	6'-8"	[2032]	W	3'-10"	[1168]	7'-0"	[2134]
K	3'-8"	[1118]	6'-8"	[2032]	X	4'-0"	[1219]	7'-0"	[2134]
L	3'-10"	[1168]	6'-8"	[2032]	Y	3'-0"	[914]	8'-0"	[2438]
M	1'-6"	[457]	7'-8"	[2337]	Z	UNASSIGNED			

DOOR MODIFICATIONS

A LAMINATED GLASS  
D DOUBLE GLAZED  
TEMPERED GLASS  
H ELECTRIC HOLD  
L LOUVER  
LP LIGHT PROOF LOUVER  
M MECH. SEAL FOR LIGHT  
PROOF & SOUND  
RETARDING DOOR  
T TEMPERED GLASS  
U UNDERCUT 1" [25mm]  
V LEAD GLASS  
F FIRE RATED GLAZING

DOOR SYMBOL



LEGEND (SEE ELEVATIONS)

[---] GLASS OR LOUVER  
REQUIRED BY  
MODIFICATION  
[ ] GLASS OR LOUVER  
REQUIRED BY  
ELEVATION TYPE

NOTES:

1. ALL DOORS SHALL BE FLUSH - 1 3/4" [44mm] THICK UNLESS NOTED OTHERWISE.
2. TOP & SIDE RAILS SHALL BE 9" [229mm] MIN. BOTTOM RAILS SHALL BE 12" MIN. [305mm].
3. DOOR TYPES 7, 8, & 9 SHALL NOT BE USED FOR OPPOSING DOORS.
4. EVEN NUMBERS ARE METAL; ODD NUMBERS ARE WOOD.



DETAIL TITLE / DOOR SCHEDULE

Part VI: Schedule E – Room Finish, Door & Hardware  
Section 1 -- Page 8 of 27

Lessor \_\_\_\_\_ Gov't. \_\_\_\_\_

\_\_\_\_\_ of \_\_\_\_\_ Pages



**1.3 FINISH HARDWARE****1.3.1 GENERAL**

- A. Hardware Set Numbers on Schedule  
Except for protective plates, door stops, mutes, thresholds and the like specified herein, hardware requirements for each door are indicated in the Room Finish and Door Schedule by numbers that correspond to the following hardware sets listed in this SFO.
- B. Manufacturers' Catalog Number References  
Where manufacturers' products are specified herein, products of other manufacturers which are considered equivalent to those specified may be used. Manufacturers whose products are specified are identified by abbreviations as follows:

Adams-Rite	Adams Rite Mfg. Co.	Glendale, CA
Glynn Johnson	Glynn Johnson Co.	Chicago, IL
LCN	LCN Closers	Princeton, IL
Firemark	Rixon-Firemark Co.	Chicago, IL
Hager	Hager Hinge Company	Saint Louis, MO
Stanley	The Stanley Works	New Britain, CT
Trimco	Triangle Brass Mfg. Co.	Los Angeles, CA
Unican	Simplex Security Systems	Collinsville, CT
Von Duprin	Von Duprin Hardware Co.	Indianapolis, IN
Zero	Zero Weather Stripping Co.	New York, NY

- C. Keying  
All cylinders shall be keyed into Grand Master Key System. Provide removable core cylinders that are removable only with a special key or tool without disassembly of knob or lockset. Cylinders shall be 7 pin type. Keying information shall be furnished at a later date by the COR.

**1.3.2 BUTT HINGES**

- A. ANSI A156.1.  
The following types of butt hinges shall be used for the types of doors listed, except where otherwise specified:

(1) *Exterior Doors*

Type A2112 for doors 900 mm (3 feet) wide or less and Type A2111 for doors over 900 mm (3 feet) wide. Hinges for exterior doors shall have non-removable pins.

(2) *Interior Doors*

Type 8112 for doors 900 mm (3 feet) wide or less and Type A8111 for doors over 900 mm (3 feet) wide.

(3) *Automatic doors hung on butts*

Type A2111 for exterior doors and aluminum doors, and Type A8111 for other doors.

**Part VI: Schedule E – Room Finish, Door & Hardware**  
**Section 1 -- Page 9 of 27**

(4) *Labeled Wood Fire Doors*

Type 8411 or Type 8412; these hinges shall be thru bolted to door with hex nuts and bolts.

**1.3.3 CONTINUOUS HINGES**

A. ANSI/BHMA A156.26

Grade 1-150

(1) *Listed under Category N in BHMA's "Certified Product Directory."*

B. General

Minimum 0.120-inch- (3.0-mm-) thick, hinge leaves with minimum overall width of 4 inches (102 mm); fabricated to full height of door and frame and to template screw locations; with components finished after milling and drilling are complete:

(1) *Fire Pins*

Steel pins to hold labeled fire doors in place if required by tested listing.

C. Continuous, Barrel-Type Hinges

Hinge with knuckles formed around a pin that extends entire length of hinge.

(1) *Base Metal for Exterior Hinges*

Stainless steel.

(2) *Base Metal for Interior Hinges*

Stainless steel

(3) *Base Metal for Hinges for Fire-Rated Assemblies*

Stainless steel

(4) *Manufacturers*

Hager Companies.

Markar Architectural Products, Inc.; a Subsidiary of Adams Rite Manufacturing Co.

McKinney Products Company; an ASSA ABLOY Group company.

Stanley Commercial Hardware; Division. of the Stanley Works and Zero International.

D. Continuous, Gear-Type Hinges

Extruded-aluminum, pinless, geared hinge leaves; joined by a continuous extruded-aluminum channel cap; with concealed, self-lubricating thrust bearings.

(1) *Manufacturers*

Bommer Industries, Inc.

Hager Companies.

McKinney Products Company; an ASSA ABLOY Group company.

Pemko Manufacturing Co.

**Part VI: Schedule E – Room Finish, Door & Hardware  
Section 1 -- Page 10 of 27**

Select Products Limited.  
Zero International.

**1.3.4 DOOR CLOSING DEVICES**

Closing devices shall be products of one manufacturer for each type required.

The closer shall have 50 percent adjustable closing force over minimum value for that closer and have adjustable hydraulic back check effective between 60 degrees and 85 degrees of door opening.

Where specified, closer shall have hold-open feature.

Size Requirements: Size closers in accordance with manufacturer's recommendations or provide multi-size closers, sizes 1 through 6.

**1.3.5 DOOR STOPS**

A. Conform to ANSI A156.16.

B. Provide door stops wherever an opened door or any item of hardware thereon would strike a wall, column, equipment or other parts of building construction. For concrete, masonry or quarry tile construction, use lead expansion shields for mounting door stops.

C. Where cylindrical locks with turn pieces or pushbuttons occur, equip wall bumpers Type L02251 (rubber pads having concave face) to receive turn piece or button.

D. Substitute floor stops Type L02141 or L02161 as appropriate, when wall bumpers would not provide an effective door stop.

E. Where drywall partitions occur, use floor stops, Type L02141 or L02161.

F. Provide stop Type L02011 or L02181, as applicable for exterior doors.

G. Omit stops where floor mounted door holders are required and where automatic operated doors occur.

H. Provide appropriate roller bumper for each set of doors (except where closet doors occur) where two doors would interfere with each other in swinging.

I. Provide appropriate door mounted stop on doors in individual toilets where floor or wall mounted stops cannot be used.

J. Provide overhead surface applied stop Type C02541, ANSI A156.8 on patient toilet doors in bedrooms where toilet door could come in contact with the bedroom door.

K. Provide door stops on doors where combination closer magnetic holders are specified.

**Part VI: Schedule E – Room Finish, Door & Hardware  
Section 1 -- Page 11 of 27**

**1.3.6 LOCKS AND LATCHES**

A. Conform to ANSI A156.2. Locks and latches for doors 45 mm (1-3/4 inch) thick or over shall have beveled fronts. Lock cylinders shall have not less than seven pins. Cylinders for all locksets shall be removable core type. Cylinder shall be removable by special key or tool. Construct all cores so that they will be interchangeable into the core housings of all mortise locks, rim locks, cylindrical locks, and any other type lock included in the Great Grand Master Key System. Disassembly of lever or lockset shall not be required to remove core from lockset. All locksets or latches on double doors with fire label shall have latch bolt with 19 mm (3/4 inch) throw. Provide temporary keying device or construction core of allow opening and closing during construction and prior to the installation of final cores.

B. In addition to above requirements, locks and latches shall comply with following requirements:

1. Cylindrical Lock and Latch Sets: levers shall meet ADA (Americans with Disabilities Act) requirements. Cylindrical locksets shall be series 4000 Grade I. Knobs for series 4000 lock and latch sets shall have 57 mm (2-1/4 inch) diameters. Where two turn pieces are specified for lock F76, turn piece on inside knob shall lock and unlock inside knob, and turn piece on outside knob shall unlock outside knob when inside knob is in the locked position. (This function is intended to allow emergency entry into these rooms without an emergency key or any special tool.)

2. Mortise Lock and Latch Sets: Conform to ANSI/BHMA A156.13. Mortise locksets shall be series 1000, minimum Grade 2. All locksets and latchsets shall have lever handles similar to Falcon S-lever Design. Lever handle shall be fabricated from wrought stainless steel. No substitute lever design or material shall be accepted. All locks and latchsets shall be furnished with curved lip strike and wrought box. Furnish armored fronts for all mortise locks.

3. Auxiliary locks shall be as specified under hardware sets and conform to ANSI A156.5.

**1.3.7 PUSH-BUTTON COMBINATION LOCKS**

A. ANSI/BHMA A156.5, Grade 1. Mechanical or electrically operated as indicated.

B. Construction: Heavy duty cylindrical lock housing conforming to ANSI/BHMA A156.2, Grade 1. Lever handles and operating components in compliance with the UFAS and the ADA Accessibility Guidelines.

C. Special Features: Key override to permit a master keyed security system and a key activated passage feature to allow access without using the entry code.

D. Manufacturers:

1. Alarm Lock.
2. Code Locks, LLC
3. Locknetics; an Ingersoll Rand company.

**Part VI: Schedule E – Room Finish, Door & Hardware**  
**Section 1 -- Page 12 of 27**

4. Kaba Ilco.

**1.3.8 ELECTROMAGNETIC LOCKS**

**A. ANSI/BHMA A156.23**

Electrically powered, of strength and configuration indicated; with electromagnet attached to frame and armature plate attached to door. Listed under Category E in BHMA's "Certified Product Directory."

*(1) Type*

Full exterior or full interior, as required by application indicated.

*(2) Strength Ranking*

1500 lbf (6672 N)

*(3) Inductive Kickback Peak Voltage*

Not more than 53 V.

*(4) Residual Magnetism*

Not more than 0 lbf (0 N) to separate door from magnet.

**B. Delayed-Egress Locks**

BHMA A156.24.

*(1) Means of Egress Doors*

Lock releases within 15 seconds after applying a force not more than 15 lbf (67 N) for not more than 3 seconds, as required by NFPA 101.

*(2) Security Grade*

Activated from secure side of door by initiating device.

*(3) Movement Grade*

Activated by door movement as initiating device.

**C. Manufacturers**

Door Controls International.

Doorguard Systems, Inc.

Dortronics Systems, Inc.

DynaLock Corp.

Locknetics; an Ingersoll-Rand Company.

Rutherford Controls Int'l. Corp.

SARGENT Manufacturing Company; an ASSA ABLOY Group company.

Securitron Magnalock Corporation; an ASSA ABLOY Group company.

Security Door Controls.

**Part VI: Schedule E – Room Finish, Door & Hardware**  
**Section 1 -- Page 13 of 27**

Lessor \_\_\_\_\_ Gov't. \_\_\_\_\_

\_\_\_\_\_ of \_\_\_\_\_ Pages

**1.3.9 CARD READERS**

Provide and install card readers where indicated. Integrate card readers with other specified systems and systems that are in place.

**1.3.10 ELECTRIC STRIKES**

- A. ANSI/ BHMA A156.31 Grade 1.
- B. General: Use fail-secure electric strikes with fire-rated devices.
- C. Manufacturers:
  - 1. Adams Rite Manufacturing Co.
  - 2. Folger Adam Security Inc.; an ASSA ABLOY Group company.
  - 3. HES, Inc.; an ASSA ABLOY Group company.
  - 4. Locknetics; an Ingersoll-Rand Company.
  - 5. Precision Hardware, Inc.
  - 6. Von Duprin; an Ingersoll-Rand Company.

**1.3.11 KEYS**

- A. Stamp all keys with change number and key set symbol. Furnish keys in quantities as follows:

Locks/Keys	Quantity
Cylinder locks	2 keys each
Cylinder lock change key blanks	100 each different key way
Master-keyed sets	6 keys each
Grand Master sets	6 keys each
Control key	1 key

**1.3.12 KEY CABINET**

A. ANSI Standard A156.5. Provide key cabinet made of cold rolled, 1.2 mm (0.0478 inch) thick furniture steel electro-welded. Doors shall have "no sag" continuous brass-pin piano type hinge and be equipped with chrome plated locking door handles, hook cam and two parasentric keys. All locks shall be nickel plated with solid brass pin tumbler cylinder keyed as directed. Key Cabinet and Key Control System shall accommodate all keys for this project plus 25 percent.

B. Key tags shall consist of two sets: Permanent self-locking and loan key snaphook type with tag colors as follows: Red fiber marker of the permanent self-locking type approximately 32 mm (1-1/4 inch) in diameter engraved with the legend "FILE KEY MUST NOT BE LOANED." Also furnish for each hook a white cloverleaf key marker with snap-hooks engraved with the legend "LOAN KEY."

C. The manufacturer of the lock cylinders and locks shall attach a key tag to keys of each lock cylinder and shall mark thereon the respective item number and key change number. Provide each group of keys in a key gathering envelope (supplied by Key Cabinet Manufacturer) in which the lock manufacturer shall include the following information: Item number, key change number and door number. The contractor shall furnish the Key Cabinet Manufacturer the hardware and keying schedules and change keys.

D. The Key Cabinet Manufacturer shall set up a three-way cross index system, including master keys, listing the keys alphabetically, the hooks numerically and the key changes numerically on different colored index cards. Index cards shall be typewritten and inserted in a durable binder. Attach the keys to the two sets of numbered tags supplied with the cabinet. (The permanent tag and the loan key tag). Instruct the owner in proper use of the system. Install cabinet as directed by the COR.

**1.3.13 ARMOR PLATES, COMBINATION KICK-MOP PLATES AND DOOR EDGING**

A. Conform to ANSI Standard A156.6.

B. Provide protective plates and door edging as specified below:

1. Kick-mop plates and armor plates plastic or metal, Type J100 series, color as required.

2. Provide kick-mop plates for both sides of each door, except where noted as not required. Kick-mop plates shall be 125 mm (5 inches) high. On push side of doors where jamb stop extends to floor, make combination kick-mop plates 38 mm (1-1/2 inches) less than width of door, except pairs of metal doors which shall have plates 25 mm (1 inch) less than width of each door. Extend all other combination kick-mop plates to within 6 mm (1/4 inch) of each edge of doors. Kick mop plates shall butt astragals. For jamb stop requirements, see specification sections pertaining to door frames.

3. Kick-mop plates are not required on following door sides:

a) Armor plate side of doors;

b) Exterior side of exterior doors;

**Part VI: Schedule E – Room Finish, Door & Hardware**  
**Section 1 -- Page 15 of 27**

- c) Closet side of closet doors;
- d) Storage side of doors to or from storage spaces; and
- e) Both sides of aluminum entrance doors.

4. Armor plates for doors are listed under "Hardware Sets". Armor plates shall be 875 mm (35 inches) high and 38 mm (1-1/2 inches) less than width of doors, except on pairs of metal doors. Plates on pairs of metal doors shall be 25 mm (1 inch) less than width of each door. Where top of intermediate rail of door is less than 875 mm (35 inches) from door bottom, extend armor plates to within 13 mm (1/2 inch) of top rail. On doors equipped with panic devices, extend armor plates to within 13 mm (1/2 inch) of panic bolt cross bar.

5. Where louver or grille occurs in lower portion of doors, substitute stretcher plate and kick-mop plate in place of armor plate. Size of stretcher plate and kick-mop plate shall be 125 mm (5 inches) high.

#### 1.3.14 EXIT DEVICES

A. Conform to ANSI Standard A156.3. Exit devices shall be Grade 1; type and function are specified in hardware sets. Provide flush with finished floor strikes for vertical rod exit devices in interior of building. Trim shall have lever handles similar to locksets, unless otherwise specified.

B. Exit devices for fire doors shall comply with Underwriters Laboratories, Inc., requirements for Fire Exit Hardware. Submit proof of compliance.

#### 1.3.15 WEATHERSTRIPS (FOR EXTERIOR DOORS)

Conform to ANSI A156.22. Air leakage shall not to exceed 0.50 CFM per foot of crack length (0.000774m<sup>3</sup>/s/m).

#### 1.3.16 MISCELLANEOUS HARDWARE

A. Cylinders for Various Partitions and Doors: Key cylinders same as entrance doors of area in which partitions and door occur. Provide cylinders to operate locking devices where specified for following partitions and doors:

Slide-up and roll-up doors.

- D. Mutes: Conform to ANSI A156.16. Provide door mutes or door silencers Type L03011, of white or light gray color, on each steel door frame, except lead-lined frames and frames for sound-resistant, lightproof and electromagnetically shielded doors. Furnish 3 mutes for single doors and 2 mutes for each pair of doors, except double-acting doors. Provide 4 mutes or silencers for frames for each Dutch type door. Provide 2 mutes for each edge of sliding door which would contact door frame.

### Part VI: Schedule E – Room Finish, Door & Hardware Section 1 -- Page 16 of 27



**1.3.17 PADLOCKS FOR VARIOUS DOORS, GATES AND HATCHES**

A. ASTM E883, size 50 mm (2 inch) wide chain; furnish extended shackles as required by job conditions. Provide padlocks, with key cylinders, for each door in following areas as noted.

B. Key padlocks as follows:

1. Chain Link Fence Gates for Electrical Substation and other Fenced Buildings or Areas: Engineer's set, except as otherwise specified.

2. Chain Link Fence Gates for Hazardous Waste Storage in the Housekeeping Room and Controlled Substances: Maintenance supply set.

3. Roof Access and Scuttles: Engineer's set.

**1.3.18 HARDWARE SETS**

Following sets of hardware correspond to hardware numbers shown in Room Finish and Door Schedule. Where hardware set for a single door is specified for a pair of doors; equip each leaf of such pair of doors with set noted. **Only those hardware sets that are referenced in the Schedule will be required.** Disregard breaks in hardware set numbering sequence. Disregard hardware sets listed below but not shown in Schedule.

HW #	Category	Single or Pair	Function
<b>GENERAL INTERIOR DOORS</b>			
1	General - Interior	Single	Non-locking. May be push/pull, hospital latch, or latchset.
2	General – Interior	Single	Privacy. May be standard privacy, hospital privacy (double thumbturn), keyed indicator privacy, or staff key-only entry indicator privacy.
3	General – Interior	Single	Office. May include standard office with thumbturn or entry lock with thumbturn and deadlock.
4	General – Interior	Single	Classroom. May include standard classroom, double-cylinder utility function (free egress always available), classroom hospital latch.
5	General – Interior	Single	Storeroom. May include standard storeroom, storeroom with deadbolt, institutional lock (lockable both sides).
6	General – Interior	Single	Panic. May include exit only, passage lever, lockable lever, storeroom lever, pull.
7	General – Interior	Single	Special. Could include roll-up doors, Won doors, operable partitions, sliding doors, ICU/CCU doors, folding doors, etc.
8	General - Interior	Pair	Non-locking. May be push/pull, hospital latch, or latchset.
9	General – Interior	Pair	Entry. May include entry lock with thumbturn and deadlock.
10	General – Interior	Pair	Classroom. May include standard classroom, double-cylinder utility function (free egress always available), classroom hospital latch.
11	General – Interior	Pair	Storeroom. May include standard storeroom, storeroom with deadbolt, institutional lock (lockable both sides).
12	General – Interior	Pair	Panic. May include exit only, passage lever, lockable lever, storeroom lever, pulls.
13	General – Interior	Pair	Special. Could include sliding doors, folding doors, etc.
<b>GENERAL EXTERIOR DOORS</b>			
E1	General – Exterior	Single	Entry lock, typically with deadbolt and interior thumbturn. Can also include glass or aluminum storefront door with deadlock.
E2	General – Exterior	Single	Classroom. May include standard classroom or double-cylinder utility function (free egress always available).
E3	General – Exterior	Single	Storeroom. May include standard storeroom or storeroom with deadlock.
E4	General – Exterior	Single	Panic. May include exit only, pull, or lever.
E5	General – Exterior	Single	Special. May include roll-up doors, sliding doors.
E6	General – Exterior	Pair	Entry lock, typically with deadbolt and interior thumbturn. Can also include glass or aluminum storefront pair with deadlock.
E7	General – Exterior	Pair	Classroom. May include standard classroom or double-cylinder utility function (free egress always available).
E8	General – Exterior	Pair	Storeroom. May include standard storeroom or storeroom with deadlock.
E9	General – Exterior	Pair	Panic. May include exit only, pulls, or lever.
E10	General – Exterior	Pair	Special. May include sliding doors.

**Part VI: Schedule E – Room Finish, Door & Hardware  
Section 1 -- Page 18 of 27**

Lessor \_\_\_\_\_ Gov't. \_\_\_\_\_

\_\_\_\_\_ of \_\_\_\_\_ Pages

HW #	Category	Single or Pair	Function
<b>EXTERIOR GATES</b>			
G1	Gate	Single	No locking. Traffic gate.
G2	Gate	Single	Classroom. May include standard classroom or double-cylinder utility function (free egress always available).
G3	Gate	Single	Security Lock. May include deadlock, padlock, storeroom function lock (with or without deadbolt), or institutional lock.
G4	Gate	Single	Panic. May include exit only, pull, or lever.
G5	Gate	Single	Special. May include rolling or swing-up gates.
G6	Gate	Pair	No locking. Traffic gate.
G7	Gate	Pair	Classroom. May include standard classroom or double-cylinder utility function (free egress always available).
G8	Gate	Pair	Security Lock. May include deadlock, padlock, storeroom function lock (with or without deadbolt), or institutional lock.
G9	Gate	Pair	Panic. May include exit only, pulls, or lever.
G10	Gate	Pair	Special. May include rolling gates.
<b>RESIDENTIAL UNIT DOORS</b>			
R1	Residential	Single	Entry door to unit. May be keyed entry lock with deadbolt, or stand-alone card reader lock.
R2	Residential	Single	No locking. May include latchset or dummy trim with roller latch.
R3	Residential	Single	Privacy.
R4	Residential	Single	Storeroom.
R5	Residential	Single	Special. May include sliding or folding doors.
R6	Residential	Pair	Entry door to unit. May be keyed entry lock with deadbolt, or stand-alone card reader lock.
R7	Residential	Pair	No locking. May include latchset or dummy trim with roller latch.
R8	Residential	Pair	Storeroom.
R9	Residential	Pair	Special. May include sliding or folding doors.
<b>ELECTRONIC SECURITY DOORS</b>			
SH1	Security	Single	Monitored door. Alarm contacts only. Mechanical lock.
SH2	Security	Single	Monitored door. Alarm contacts only. Mechanical panic.
SH3	Security	Single	Card reader door. Electric lockset.
SH4	Security	Single	Card reader door. Electric panic.
SH5	Security	Single	Controlled egress door. Audible alarm (may include alarm in panic bar) or delayed egress. Uses lockset.
SH6	Security	Single	Controlled egress door. Audible alarm (may include alarm in panic bar) or delayed egress panic.
SH7	Security	Pair	Monitored door. Alarm contacts only. Mechanical lock.
SH8	Security	Pair	Monitored door. Alarm contacts only. Mechanical panic.
SH9	Security	Pair	Card reader door. Electric lockset.
SH10	Security	Pair	Card reader door. Electric panic.
SH11	Security	Pair	Controlled egress door. Audible alarm (may include alarm in panic bar) or delayed egress. Uses lockset.
SH12	Security	Pair	Controlled egress door. Audible alarm (may include alarm in panic bar) or delayed egress panic.

**Part VI: Schedule E – Room Finish, Door & Hardware  
Section 1 -- Page 19 of 27**

Lessor \_\_\_\_\_ Gov't. \_\_\_\_\_ of \_\_\_\_\_ Pages

HW-1

- 1 Continuous Hinge
- 1 Door Pull w/ Plate
- 1 Push Plate
- 1 Kick Plate
- 1 Mop Plate (@ Inswing Doors)
- 1 Closer
- 1 Floor Stop
- 3 Silencers

HW-1A

Hinges as required

- 1 Latchset
- 1 Closer
- 1 Kick Plate
- 1 Mop Plate (@ Inswing Doors)
- 1 Floor Stop
- 1 Threshold
- 1 Auto Door Bottom
- 1 Set Seals

HW-1F

- 1 Continuous Hinge
- 1 Latchset
- 1 Kick Plate
- 1 Wall Stop
- 3 Silencers

HW-1K

- 1 Continuous Hinge
- 1 Hospital Latch
- 1 Closer
- 1 Armor Plate
- 1 Edge Guard (@ Wood Doors)
- 1 Overhead Stop
- 1 Auto Door Bottom
- 2 Sets Self-Adhesive Seals

HW-1L

- 1 Continuous Hinge
- 1 Latchset
- 1 Kick Plate
- 1 Wall Stop
- 1 Threshold
- 1 Auto Door Bottom
- 2 Sets Self-Adhesive Seals

HW-1R

- 1 Continuous Hinge
- 1 Latchset

- 1 Kick Plate
- 1 Closer (@ rated doors)
- 1 Wall Stop
- 1 Set Self-Adhesive Seals

HW- 1SL

- 2 (12"- 16") Pull hardware both sides of door
- 1 ADA compliant self-latching mortise with thumb turn egress handle, key lock from outside
- 1 Magnetic lock for key card access (provide power)
- 1 Adjustable strike plate
- 1 Acoustic bottom track
- 1 Set gaskets and silencers

HW-2

Hinges as required

- 1 Keyed Privacy Indicator Lock
- 1 Closer
- 1 Kick Plate
- 1 Mop Plate (@ Inswing Doors)
- 1 Floor Stop
- 1 Set Self-Adhesive Seals

HW-2C

Hinges as required

- 1 Privacy Lock
- 1 Kick Plate
- 1 Mop Plate (@ Inswing Doors)
- 1 Wall Stop
- 3 Silencers

HW-2F

Hinges as required

- 1 Privacy Lock
- 1 Wall Stop
- 3 Silencers

HW-2G

Hinges as required

- 1 Keyed Privacy Indicator Lock
- 1 Closer
- 1 Kick Plate
- 1 Mop Plate (@ Inswing Doors)
- 1 Floor Stop
- 1 Auto Door Bottom
- 2 Set Self-Adhesive Seals

HW-3

Hinges as required

- 1 Office Lock
- 1 Closer
- 1 Kick Plate
- 1 Floor Stop
- 1 Set Self-Adhesive Seals

HW-3B

Hinges as required

- 1 Office Lock
- 1 Closer
- 1 Floor Stop
- 1 Door Viewer
- 1 Set Self-Adhesive Seals

HW-3D

Hinges as required

- 1 Office Lock
- 1 Closer
- 1 Kick Plate
- 1 Floor Stop
- 1 Threshold
- 1 Auto Door Bottom
- 2 Sets Self-Adhesive Seals

HW-3E

Hinges as required

- 1 Office Lock
- 1 Floor Stop
- 1 Set Self-Adhesive Seals

HW-3G

Hinges as required

- 1 Office Lock
- 1 Floor Stop
- 1 Coat Hook
- 1 Door Viewer (Mental Health Only)
- 1 Threshold

- 1 Auto Door Bottom
- 2 Sets Self-Adhesive Seals

HW-4

Hinges as required

- 1 Classroom Lock
- 1 Overhead Stop
- 3 Silencers

HW-4B

- 1 Continuous Hinge
- 1 Public Restroom Lock
- 1 Closer
- 1 Closer
- 1 Kick Plate
- 1 Mop Plate (@ Inswing Doors)
- 1 Floor Stop (@ Outswing Doors)
- 1 Wall Stop (@ Inswing Doors)
- 1 Threshold
- 1 Auto Door Bottom
- 2 Sets Self-Adhesive Seals

HW-4D

- 1 Continuous Hinge
- 1 Classroom Lock
- 1 Closer
- 1 Armor Plate
- 1 Mop Plate (@ Inswing Doors)
- 1 Edge Guard (@ Wood Doors)
- 1 Floor Stop (@ Outswing Doors)
- 1 Wall Stop (@ Inswing Doors)
- 1 Set Self-Adhesive Seals

HW-4E

Hinges as required

- 1 Utility Lock
- 1 Closer (@ rated doors)
- 1 Closer (@ non-rated doors)
- 1 Kick Plate
- 1 Floor Stop
- 1 Threshold
- 1 Auto Door Bottom
- 2 Sets Self-Adhesive Seals

HW-4F

- 1 Continuous Hinge
- 1 Utility Lock
- 1 Closer
- 1 Armor Plate
- 1 Edge Guard (@ Wood Doors)
- 1 Floor Stop (@ Outswing Doors)
- 1 Wall Stop (@ Inswing Doors)
- 1 Set Self-Adhesive Seals

HW-4G

Hinges as required

- 1 Utility Lock
- 1 Closer (@ Rated Doors)
- 1 Kick Plate
- 1 Floor Stop
- 1 Set Self-Adhesive Seals

HW-4J

Hinges as required

- 1 Utility Lock
- 1 Closer (@ Rated Doors)
- 1 Kick Plate
- 1 Floor Stop
- 1 Threshold
- 1 Auto Door Bottom
- 2 Sets Self-Adhesive Seals

HW-4K

- 1 Continuous Hinge
- 1 Utility Lock
- 1 Armor Plate
- 1 Edge Guard (@ Wood Doors)
- 1 Floor Stop
- 1 Set Self-Adhesive Seals

HW-4L

- 1 Continuous Hinge
- 1 Classroom Hospital Lock
- 1 Kick Plate
- 1 Edge Guard (@ Wood Doors)
- 1 Floor Stop
- 1 Threshold
- 1 Auto Door Bottom
- 1 Set Sound/Light Seals

HW-4M

- 1 Continuous Hinge
- 1 Classroom Hospital Lock

- 1 Heavy-Duty Armor Plate
- 1 Edge Guard (@ Wood Doors)
- 1 Floor Stop
- 1 Set Self-Adhesive Seals

HW-4N

- 1 Continuous Hinge
- 1 Utility Lock
- 1 Closer (@ rated doors)
- 1 Kick Plate
- 1 Edge Guard (@ Wood Doors)
- 1 Floor Stop
- 1 Threshold
- 1 Auto Door Bottom
- 2 Sets Self-Adhesive Seals

HW-4P

- 1 Continuous Hinge
- 1 Classroom Hospital Lock
- 1 Armor Plate
- 1 Edge Guard (@ Wood Doors)
- 1 Overhead Stop
- 1 Threshold
- 1 Auto Door Bottom
- 2 Sets Self-Adhesive Seals

HW-4Q

- 1 Pivot Set
- 1 Intermediate Pivot
- 1 Utility Hospital Lock
- 1 Armor Plate
- 2 Edge Guard (@ Wood Doors)
- 1 Overhead Stop
- 1 Set Self-Adhesive Seal

HW-4U

- 1 Continuous Hinge
- 1 Public Restroom Lock
- 1 Closer
- 1 Closer
- 1 Kick Plate
- 1 Mop Plate (@ Inswing Doors)
- 1 Floor Stop (@ Outswing Doors)
- 1 Wall Stop (@ Inswing Doors)
- 1 Set Self-Adhesive Seals

**Part VI: Schedule E – Room Finish, Door & Hardware  
Section 1 -- Page 22 of 27**

HW-4V

- 1 Pivot Set
- 1 Intermediate Pivot
- 1 Utility Hospital Lock
- 1 Closer
- 1 Armor Plate
- 2 Edge Guard (@ Wood Doors)
- 1 Overhead Holder-Stop
- 1 Set Self-Adhesive Seal

HW-4X

- 1 Pivot Set
  - 1 Intermediate Transfer Pivot
  - 1 Utility Hospital Lock
  - 1 Electric Unlatch Strike
  - 1 Power Supply
  - 1 Armor Plate
  - 2 Edge Guard (@ Wood Doors)
  - 1 Overhead Stop
  - 1 Set Self-Adhesive Seal
- AUTO DOOR OPERATOR

HW-4Y

- 1 Continuous Hinge
  - 1 Utility Hospital Lock
  - 1 Electric Unlatch Strike
  - 1 Power Supply
  - 1 Armor Plate
  - 1 Edge Guard (@ Wood Doors)
  - 1 Overhead Stop
  - 1 Set Self-Adhesive Seals
- AUTOMATIC DOOR OPERATOR

HW-5

- Hinges as required
- 1 Storeroom Lock
  - 1 Closer
  - 1 Kick Plate
  - 1 Floor Stop
  - 1 Set Self-Adhesive Seals

HW-5B

- 1 Continuous Hinge
- 1 Storeroom Lock
- 1 Closer
- 1 Armor Plate
- 1 Edge Guard (@ Wood Doors)
- 1 Floor Stop
- 1 Set Self-Adhesive Seals

HW-5D

- Hinges as required
- 1 Storeroom Lock
  - 1 Kick Plate
  - 1 Floor Stop (@ Inswing Doors)
  - 1 Wall Stop (@ Outswing Doors)
  - 3 Silencers

HW-5E

- 1 Continuous Hinge
- 1 Storeroom Lock
- 1 Armor Plate
- 1 Edge Guard (@ Wood Doors)
- 1 Floor Stop
- 1 Set Self-Adhesive Seals

HW-5G

- Hinges as required
- 1 Storeroom Lock
  - 1 Kick Plate
  - 1 Floor Stop
  - 1 Threshold
  - 1 Auto Door Bottom
  - 2 Sets Self-Adhesive Seals

HW-5K

- 1 Continuous Hinge
- 1 Storeroom Lock
- 1 Closer
- 1 Armor Plate
- 1 Edge Guard (@ Wood Doors)
- 1 Floor Stop
- 1 Threshold
- 1 Auto Door Bottom
- 2 Sets Self-Adhesive Seals

HW-6C

- 1 Continuous Hinge
- 1 Exit Device
- 1 Key Cylinder
- 1 Closer
- 1 Kick Plate
- 1 Edge Guard (@ Wood Doors)
- 1 Floor Stop
- 1 Threshold
- 1 Auto Door Bottom
- 2 Sets Self-Adhesive Seals

**Part VI: Schedule E – Room Finish, Door & Hardware  
Section 1 -- Page 23 of 27**

HW-7

- 1 Key Cylinder (for keyswitch) Type as required

HW - 7SL

- 2 (12"- 16") Pull hardware both sides of door
- 1 ADA compliant self-latching mortise with thumb turn egress handle, key lock from outside
- 1 Magnetic lock for key card access (provide power)
- 1 Adjustable strike plate
- 1 Acoustic bottom track
- 1 Set gaskets and silencers

HW - 7SL

- 2 (12"- 16") Pull hardware both sides of door
- 1 ADA compliant self-latching mortise with thumb turn egress handle, key lock from outside
- 1 Magnetic lock for key card access (provide power)
- 1 Adjustable strike plate
- 1 Acoustic bottom track
- 1 Set gaskets and silencers

HW-8B

- 2 Continuous Hinge
- 2 Push Plate
- 2 Hospital Grip
- 2 Kick Plate
- 2 Mop Plate (@ Inswing Doors)
- 2 Closer
- 2 Floor Stop
- 2 Silencers

HW -8D

- 2 Continuous Hinge
- 2 Inactive Push Bar
- 2 Door pulls
- 1 Door operator
- Closers – automatic – handicapped push button (provide power)
- 2 Kick plates
- 2 Push plates
- Storefront door – balance of hardware by manufacturer

HW-8E

- 2 Continuous Hinges
- 2 Push Plate
- 2 Hospital Grip
- 2 Kick Plate
- 2 Mop Plate (@ Inswing Doors)
- 2 Edge Guard (@ Wood Doors)
- 2 Floor Stop
- 2 Silencers

HW-8F

- 2 Continuous Hinges
- 2 Push Plate
- 2 Hospital Grip
- 2 Kick Plate
- 2 Mop Plate (@ Inswing Doors)
- 2 Edge Guard (@ Wood Doors)
- 2 Floor Stop
- 1 Threshold
- 2 Auto Door Bottoms
- 2 Set Self-Adhesive Seals



HW-10A

- 1 Continuous Hinge
- 1 Continuous Hinge
- 1 Set Auto Flush Bolts
- 1 Classroom Lock
- 1 Electric Unlatch Strike
- 1 Power Supply
- 1 Coordinator
- 1 Overlapping Astragal with Self-Adhesive Seal
- 2 Armor Plates
- 2 Edge Guard (@ Wood Doors)
- 2 Floor Stops
- 1 Threshold
- 2 Auto Door Bottoms
- 2 Set Self-Adhesive Seals

HW-10C

- 2 Continuous Hinges
- 1 Set Auto Flush Bolts
- 1 Utility Lock
- 1 Overlapping Astragal with Self-Adhesive Seal
- 2 Kick Plates
- 1 Edge Guard (@ Wood Doors)
- 2 Floor Stops
- 1 Set Self-Adhesive Seals

HW-10E

- 2 Pivot Sets
- 2 Intermediate Pivots
- 1 Set Auto Flush Bolts
- 1 Classroom Lock
- 1 Overlapping Astragal with Self-Adhesive Seal
- 2 Armor Plates
- 4 Edge Guard (@ Wood Doors)
- 2 Floor Stops
- 1 Set Self-Adhesive Seals

HW-11

- Hinges as required
- 1 Set Auto Flush Bolts
- 1 Storeroom Lock
- 1 Coordinator
- 1 Overlapping Astragal with Self-Adhesive Seal
- 2 Closers
- 2 Kick Plates
- 2 Floor Stops
- 1 Set Self-Adhesive Seals

HW-11A

- 2 Continuous Hinges
- 1 Set Auto Flush Bolts
- 1 Security Storeroom Lock
- 1 Overlapping Astragal with Self-Adhesive Seal
- 2 Armor Plates
- 2 Edge Guard (@ Wood Doors)
- 2 Floor Stops
- 1 Set Self-Adhesive Seals

HW-11B

- 2 Continuous Hinges
- 1 Set Auto Flush Bolts
- 1 Storeroom Lock
- 1 Coordinator
- 1 Overlapping Astragal with Self-Adhesive Seal
- 2 Closers
- 2 Armor Plates
- 2 Edge Guard (@ Wood Doors)
- 2 Floor Stops
- 1 Set Self-Adhesive Seals

HW-11C

- Hinges as required
- 1 Set Auto Flush Bolts
- 1 Storeroom Lock
- 1 Coordinator
- 1 Overlapping Astragal with Self-Adhesive Seal
- 2 Closers
- 2 Kick Plates
- 2 Floor Stops
- 1 Threshold
- 2 Auto Door Bottoms
- 2 Set Self-Adhesive Seals

**Part VI: Schedule E – Room Finish, Door & Hardware**  
**Section 1 -- Page 25 of 27**

Lessor \_\_\_\_\_ Gov't. \_\_\_\_\_

\_\_\_\_\_ of \_\_\_\_\_ Pages

HW-12A

- 1 Steel Frame
- 1 Integrated Pair Doors w/Exit Devices and Pull Trim
- 2 Continuous Hinges
- 1 Self-Adhesive Astragal
- 2 Closers
- 2 Magnetic Holders
- 1 Set Self-Adhesive Seals

HW-12G

- 2 Continuous Hinges
- 1 Exit Device
- 1 Exit Device
- 1 Key Cylinder
- 1 Set Meeting Stile Astragals
- 2 Closers
- 2 Kick Plates
- 2 Edge Guard (@ Wood Doors)
- 2 Floor Stops
- 2 Auto Door Bottoms
- 2 Sets Self-Adhesive Seals

HW- E3

- 1 Closer
- 1 Continuous hinge
- 1 Armor plate (inside)
- 1 Power supply
- 1 Threshold
- 1 Auto door bottom
- 1 Set of self-adhesive seals
- 1 Electrified lock
- 1 Alarm contact
- 1 Magnetic lock for card reader access

HW- E4

- 1 Continuous hinge
- 1 Exit only Exit Device
- 1 Closer
- 2 Kick plate
- 1 Weather-strip
- 1 Door bottom sweep
- 1 Threshold
- 1 Power supply

HW- E6

- 2 Continuous Hinge
- 1 Removable Mullion
- 2 Panic hardware
- 1 Door operator
- Closers – automatic – handicapped push button (provide power)
- 2 Kick plates
- 2 Push plates
- 1 Key switch
- 1 Power supply
- 2 Weather strips
- 2 Door bottom sweep
- 1 Threshold
- 2 Inactive Push Bar
- 2 Door pulls
- 1 Magnetic lock for key card access (provide power)
- Storefront door – balance of hardware by manufacturer

HW- E8

- 1 Closer
- 1 Continuous hinge
- 1 Armor plate (inside)
- 1 Power supply
- 1 Threshold
- 1 Auto door bottom
- 1 Set of self-adhesive seals
- 1 Electrified lock
- 1 Alarm contact

HW- E10

- Power operated door
- 1 Magnetic lock for key card access (provide power)

HW-SH-2

- 1 Continuous Hinge
- 1 Door Pull w/ Plate
- 1 Lock
- 1 Strike/Keeper
- 1 Overhead Stop
- 1 Door Position Switch

**Part VI: Schedule E – Room Finish, Door & Hardware  
Section 1 -- Page 26 of 27**

Lessor \_\_\_\_\_ Gov't. \_\_\_\_\_

\_\_\_\_\_ of \_\_\_\_\_ Pages

HW-SH-3

Hinges as required

- 1 Transfer Hinge
- 1 Electrified Lock
- 1 Power Supply
- 1 Closer
- 1 Floor Stop
- 1 Threshold
- 1 Auto Door Bottom
- 2 Sets Self-Adhesive Seals
- 1 Alarm Contact

CARD READER

HW-SH-3B

- 1 Continuous Hinge
- 1 Push-button Combination Lock
- 1 Closer
- 1 Kick Plate
- 1 Mop Plate (@ Inswing Doors)
- 1 Floor Stop
- 1 Set Self-Adhesive Seals

HW-SH-3C

- 1 Continuous Hinge
- 1 Push-button Combination Lock
- 1 Closer
- 1 Armor Plate
- 1 Edge Guard (@ Wood Doors)
- 1 Floor Stop
- 1 Set Self-Adhesive Seals

HW-SH-3D

- 1 Continuous Hinge
  - 1 Electrified Lock
  - 1 Power Supply
  - 1 Closer
  - 1 Armor Plate
  - 1 Edge Guard (@ Wood Doors)
  - 1 Threshold
  - 1 Auto Door Bottom
  - 2 Sets Self-Adhesive Seals
  - 1 Alarm Contact
- CARD READER

HW-SH-3H

- 1 Continuous Transfer Hinge
- 1 Electrified Lock
- 1 Power Supply
- 1 Closer
- 1 Kick Plate
- 1 Floor Stop
- 1 Set Self-Adhesive Seals
- 1 Door Viewer
- 1 Alarm Contact

CARD READER

HW-SH4

Hinges as required

- 1 Panic hardware
- 1 Closer
- 1 Kick plate
- 1 Mop plate
- 1 Wall stop
- 1 Smoke seal

HW-SH-9A

- 2 Continuous Hinge
- 1 Set Auto Flush Bolts
- 1 Dust Proof Strike
- 1 Push-button Combination Lock
- 1 Coordinator
- 1 Overlapping Astragal with Seal-Adhesive Seal
- 2 Closers
- 2 Armor Plates
- 2 Edge Guard (@ Wood Doors)
- 2 Floor Stops
- 1 Set Self-Adhesive Seals