

ELECTRICAL DEMOLITION NOTES

GENERAL: DEMOLITION DRAWINGS ARE BASED ON EXISTING PLANS AND FIELD INVESTIGATION PRIOR TO DEMOLITION. VISIT THE EXISTING BUILDING PRIOR TO BID IN ORDER TO BECOME FAMILIAR WITH THE EXISTING CONDITIONS AND IN ORDER TO AVOID CONFLICTS.

DASHED ITEMS: ALL ITEMS SHOWN DASHED ON DEMOLITION PLANS ARE EXISTING AND SHALL BE REMOVED.

SOLID ITEMS: ALL ITEMS SHOWN SOLID ON DEMOLITION PLANS ARE EXISTING TO REMAIN.

CIRCUITING TO REMAIN: EXISTING CIRCUITING TO REMAIN SHALL BE DEROUTED OR RECONNECTED, AS REQUIRED, WHERE AFFECTED BY NEW WORK IN ORDER TO MAINTAIN CONTINUITY OF THE CIRCUIT.

REUSE OF EXISTING CIRCUITRY: EXISTING CIRCUITRY SERVING LIGHTING FIXTURES AND/OR RECEPTACLES FOR A GIVEN AREA SHALL BE REUSED TO THE FULLEST EXTENT POSSIBLE TO SERVE THE NEW LAYOUT. PROVIDE CIRCUIT MODIFICATIONS INDICATED OR AS OTHERWISE REQUIRED TO MAINTAIN THE CONTINUITY OF EXISTING CIRCUITS THAT REMAIN.

EXISTING CONDUIT: ALL EXISTING CONDUITS AND WIRING THAT WILL NOT BE REUSED SHALL BE REMOVED WHERE THEY WILL BE EXPOSED UPON COMPLETION OF NEW WORK. EXISTING CONDUIT TO REMAIN CONCEALED IN WALLS SHALL BE ABANDONED. EXISTING CONDUIT TO REMAIN BELOW FLOOR SLAB SHALL BE CUT OFF ONE INCH BELOW ROUGH FLOOR AND GROUTED FLUSH. ALL EXISTING WIRING IN CONDUITS TO BE ABANDONED SHALL BE DISCONNECTED FROM POWER SOURCE AND REMOVED.

REPAIR DAMAGE: EXERCISE CARE IN REMOVAL OF DEMOLITION ITEMS. REPAIR, AT NO ADDITIONAL COST TO THE OWNER, ANY DAMAGE CAUSED TO EXISTING CONSTRUCTION AND/OR EQUIPMENT TO REMAIN.

ASSOCIATED APPURTENANCES: REMOVE ALL ELECTRICAL APPURTENANCES (DISCONNECTS, STARTERS, WIRING, CONDUIT, ETC.) ASSOCIATED WITH EQUIPMENT TO BE REMOVED BY OTHERS.

KNOCKOUT PLUGS AND COVERS: ALL CONDUIT REMOVED SHALL BE REMOVED IN ITS ENTIRETY, INCLUDING FITTINGS, MOUNTING DEVICES, MOUNTING HARDWARE, ETC. PROVIDE CONDUIT PLUGS AND BLANKS FOR ALL OPENINGS CREATED BY THE REMOVAL OF CONDUIT. PROVIDE BLANK COVER PLATES FOR ALL OPENED OUTLET BOXES CREATED BY THE REMOVAL OF EQUIPMENT AND/OR DEVICES

DEMOLISHED MATERIALS: ALL MATERIALS REMOVED UNDER DEMOLITION, NOT TO BE RELOCATED OR DESIGNATED TO BE TURNED OVER TO THE OWNER, SHALL BECOME THE PROPERTY OF THE CONTRACTOR AND SHALL BE REMOVED COMPLETELY FROM THE SITE.

SCHEDULE OUTAGES: ALL WORK AND ALL POWER OUTAGES IN THE EXISTING BUILDING SHALL BE SCHEDULED AT TIMES CONVENIENT TO THE OWNER.

NOTIFICATION: NOTIFY THE OWNER PRIOR TO TURNING OFF ANY CIRCUITS.

GENERAL ELECTRICAL NOTES

GENERAL: UNLESS SPECIFICALLY INDICATED OTHERWISE, ALL WORK SHOWN ON ELECTRICAL DRAWINGS IS NEW WORK TO BE PROVIDED UNDER THIS CONTRACT.

COORDINATION: COORDINATE AND COOPERATE WITH ALL TRADES ON THE PROJECT. THE CONTRACTOR SHALL REVIEW ALL CONTRACT DOCUMENTS INCLUDING CIVIL, STRUCTURAL, ARCHITECTURAL DRAWINGS AND SPECIFICATIONS. CONTRACTOR SHALL COORDINATE AND ADJUST ACCORDINGLY AS DIRECTED BY THE ENGINEER.

AS-BUILT DRAWINGS: SECURE AN EXTRA SET OF ELECTRICAL DRAWINGS TO BE KEPT ON SITE AND MARK, DAILY, THE DRAWINGS IN RED AS THE PROJECT PROGRESSES IN ORDER TO KEEP AN ACCURATE RECORD OF ALL DEVIATIONS BETWEEN THE WORK SHOWN ON THE DRAWINGS AND THE WORK WHICH IS ACTUALLY INSTALLED. THESE MARKED DRAWINGS SHALL REFLECT ANY AND ALL CHANGES AND REVISIONS TO THE ORIGINAL DESIGN WHICH EXISTS IN THE COMPLETED WORK. DELIVER THE MARKED DRAWINGS TO THE ENGINEER AT PROJECT CLOSE-OUT.

TESTS: TEST ALL WIRING FOR CONTINUITY AND GROUNDS BEFORE CONNECTING ANY FIXTURES OR DEVICES. PERFORM INSULATION RESISTANCE TESTS ON ALL WIRING #8 OR LARGER TO INSURE THAT ALL PORTIONS ARE FREE FROM SHORT-CIRCUITS AND GROUNDS.

INSPECTIONS: ARRANGE ALL NECESSARY INSPECTIONS. DELIVER ALL REQUIRED INSPECTION CERTIFICATES TO THE OWNER.

GROUNDING: PROVIDE GROUNDING IN ACCORDANCE WITH THE NEC FOR THE ENTIRE ELECTRICAL SYSTEM INCLUDING EQUIPMENT FRAMES (CONDUITS, SWITCHES, CONTROLLERS, WIRE-WAYS, NEUTRAL CONDUCTORS, AND OTHER EQUIPMENT. PROVIDE A GROUNDING CONDUCTOR IN ALL POWER CONDUITS.

LABELS: PROVIDE LABELS FOR ALL PANELBOARDS, CABINETS, SAFETY SWITCHES, MOTOR-DISCONNECT SWITCHES, AND MOTOR CONTROLLERS. LABELS SHALL BE MACHINE ENGRAVED, LAMINATED PLASTIC, PERMANENTLY ATTACHED WITH SELF-TAPPING SCREWS OR RIVETS. DO NOT USE SELF-ADHESIVE LABELS.

J-BOX LABELING: LABEL ALL JUNCTION BOXES WITH PERMANENT MARKER IDENTIFYING CIRCUIT NUMBER AND PANELBOARD OF CIRCUITS WITHIN.

PANEL DIRECTORY: PROVIDE TYPEWRITTEN PANELBOARD DIRECTORY CARD IN EACH PANELBOARD WITH CIRCUIT LOAD INFORMATION AND ROOM NUMBER CLEARLY IDENTIFIED. USE ACTUAL ROOM NUMBERS IN THE BUILDING, NOT THE ROOM NUMBERS SHOWN ON THE CONTRACT DRAWINGS, AS THEY ARE OFTEN DIFFERENT.

CONDUCTORS: IN SITUATIONS WHERE CONDUCTOR SIZES AND/OR QUANTITIES OF PARALLEL SETS HAVE BEEN INCREASED DUE TO VOLTAGE DROP OR FOR OTHER REASONS, CONTRACTOR SHALL PROVIDE THE APPROPRIATE LUG SIZES/QUANTITIES WITHIN THE EQUIPMENT CONNECTED (SWITCHBOARD, PANELBOARD, DISCONNECT SWITCH, TRANSFER SWITCH ETC.) TO PERMIT SATISFACTORY CONNECTION OF THE INDICATED CONDUCTORS. WHERE SUFFICIENT LUG SIZES AND/OR QUANTITIES CANNOT BE PROVIDED TO ACCOMMODATE THE CONDUCTORS INDICATED, THEN PROVIDE REDUCING ADAPTERS, PIN TERMINALS, OR A JUNCTION BOX TO SPLICE LARGER CONDUCTORS TO APPROPRIATELY SIZED SMALLER CONDUCTORS TO FIT INTO THE LUGS PROVIDED. ALL CONDUCTORS SHALL BE SIZED IN ACCORDANCE WITH THE NEC.

CONNECTION DETAILS: SECURE APPROVED SHOP DRAWINGS SHOWING WIRING DIAGRAMS, ROUGH-IN AND HOOK UP DETAILS FROM OTHER INVOLVED CONTRACTORS FOR EQUIPMENT WHICH MUST BE CONNECTED ELECTRICALLY.

WORKING CLEARANCE: COORDINATE FINAL LOCATIONS OF ELECTRICAL EQUIPMENT WITH MECHANICAL DUCTWORK, PIPING ETC. AND ASSURE WORKING CLEARANCE REQUIRED BY NEC WILL BE MET. SUFFICIENT ACCESS AND WORKING SPACE SHALL BE PROVIDED AND MAINTAINED AROUND ELECTRICAL EQUIPMENT AS REQUIRED BY THE NATIONAL ELECTRICAL CODE. CONTRACTOR SHALL COORDINATE FINAL LOCATION OF EQUIPMENT PROVIDED AND INSTALLED BY OTHER TRADES.

LIGHTING ARRANGEMENT: ARRANGE LIGHTING FIXTURES IN ACCORDANCE WITH THE ARCHITECTURAL REFLECTED CEILING PLANS.

LIGHTING COORDINATION: COORDINATE LIGHTING FIXTURES WITH GRILLES, DIFFUSERS, SPRINKLER HEADS, AND ACCESS PANELS, ETC. PROVIDE FIXTURE MOUNTING BRACKETS, ACCESSORIES, PLASTER FRAMES, ETC., SUITABLE FOR THE CEILING TYPES INDICATED ON THE ARCHITECTURAL PLANS.

MATERIAL COORDINATION: VERIFY CEILING AND WALL CONSTRUCTION AND MATERIAL PRIOR TO ORDERING LIGHT FIXTURES OR OTHER DEVICES TO INSURE PROPER FIXTURE OR DEVICE IS FURNISHED TO MATCH CONSTRUCTION.

MOUNTING HEIGHTS: MOUNTING HEIGHTS INDICATED ARE FROM THE FINISHED FLOOR TO THE CENTERLINE OF THE WIRING DEVICE UNLESS OTHERWISE NOTED. MOUNTING HEIGHTS OF LIGHTING FIXTURES ARE TO THE BOTTOM OF THE FIXTURE UNLESS OTHERWISE NOTED.

DEVICE LOCATIONS: COORDINATE LOCATIONS OF SWITCHES, RECEPTACLES, AND TELE/DATA OUTLETS WITH OTHER WALL MOUNTED DEVICES SUCH AS THERMOSTATS AND CONTROL STATIONS.

DEVICE COORDINATION: THOROUGHLY REVIEW AND COORDINATE ALL CASEWORK AND CABINET DRAWINGS AND ARCHITECTURAL ELEVATIONS WITH DEVICE LOCATIONS PRIOR TO ROUGH-IN OF OUTLET BOXES.

BARRIERS: WHERE A MULTIPLE-GANG BOX HAS CIRCUITS OF DIFFERENT VOLTAGES OR SYSTEMS WHICH ARE REQUIRED TO BE SEPARATED, PROVIDE THE CODE-REQUIRED SEPARATION USING A FULL HEIGHT AND DEPTH BARRIER PLATE.

FIRE PROOFING: FOR ANY WALL OR FLOOR PENETRATIONS THROUGH FIRE-RATED STRUCTURES PROVIDE FIRE-PROOFING TO SEAL ALL THE PENETRATIONS AFTER THE CONDUIT HAS BEEN INSTALLED. FIRE PROOFING FOR PENETRATIONS SHALL BE UL APPROVED PER THE PENETRATION MADE IN ORDER TO MAINTAIN FIRE-RATED INTEGRITY OF THE STRUCTURE.

CLEAN UP: ON PROJECT CLOSE-OUT CLEAN ALL ELECTRICAL DEVICES, LIGHTING FIXTURES, LAMPS AND LENSES, AND REMOVE ALL PAINT SPATTERS FROM DEVICES, FIXTURES AND PLATES. REPLACE ALL INOPERATIVE LAMPS.

FIRE ALARM COORDINATION: THE ELECTRICAL CONTRACTOR SHALL COORDINATE WITH THE FIRE ALARM SYSTEM PROVIDER AND PROVIDE POWER CONNECTIONS TO ALL COMPONENTS WHETHER SHOWN OR NOT. MANUFACTURERS REQUIRE VARYING QUANTITIES OF POWER CONNECTIONS FOR EQUIPMENT LIKE EXPANDER PANELS AND POWER SUPPLIES. THESE DEVICES ARE DEPENDENT UPON THE SPECIFIC MANUFACTURERS SYSTEM. THE FIRE ALARM SYSTEM SUPPLIER SHALL NOTIFY THE OTHER APPROPRIATE SUB-CONTRACTORS ABOUT THESE REQUIREMENTS AND CONNECTION SHALL BE PROVIDED AS PART OF THE PROJECT.

HVAC DAMPERS, ETC: CONTRACTORS SHALL COORDINATE WITH THE EQUIPMENT AND SYSTEM BEING PROVIDED AND PROVIDE POWER CONNECTIONS ACCORDINGLY. THESE CONNECTIONS SHALL BE FOR FIRE/SMOKE DAMPERS, DDC CONTROL DEVICES, ETC. CONTRACTOR SHALL COORDINATE THE VOLTAGE REQUIREMENTS AND PROVIDE ALL NECESSARY CONNECTIONS, COMPONENTS, ETC. THIS INCLUDES TRANSFORMERS, BOXES, ETC.

ELECTRICAL LEGEND

LIGHTING



FLUORESCENT LIGHTING FIXTURE



EMERGENCY LIGHTING FIXTURE WITH EMERGENCY BATTERY BALLAST – CONNECT EMERGENCY BALLAST AHEAD OF LOCAL SWITCH.



DOWNLIGHT OR PENDANT MOUNTED FIXTURE



WALL MOUNTED LIGHTING FIXTURE



LIGHTING FIXTURE TYPE SYMBOL. SEE LIGHTING FIXTURE DETAILS.



SINGLE POLE SWITCH, 20A, 120/277V, 46" AFF UON



THREE-WAY DIMMER SWITCH, 46" AFF UON. FOR INCANDESCENT FIXTURES, PROVIDE 1500W, 120V SWITCH. FOR FLUORESCENT OR L.E.D. FIXTURES, COORDINATE VOLTAGE AND RATINGS OF SWITCH WITH TYPE AND QUANTITY OF BALLASTS OR DRIVERS TO BE CONTROLLED.



CEILING MOUNTED DUAL TECHNOLOGY ULTRASONIC/PASSIVE INFRARED OCCUPANCY SENSOR.



WALL MOUNTED DUAL TECHNOLOGY OCCUPANCY SENSOR WITH TWO SINGLE POLE SWITCHES, 120/277V, 800W AT 120V, 1200W AT 277V. MOUNT 46" AFF.

POWER



DUPLEX CONVENIENCE RECEPTACLE 20A, 120V, 18" AFF, UON



TWO DUPLEX RECEPTACLES IN COMMON BOX, EACH 20A, 120V, 18" AFF, UON



DUPLEX CONVENIENCE RECEPTACLE 20A, 120V, 6" ABOVE COUNTER.



DEVICE MOUNTED IN FLUSH FLOOR BOX. SUBSCRIPT "PT", WHERE USED, INDICATES A FLUSH MOUNTED POKE-THRU DEVICE



FAN COIL UNIT CONNECTION.



MOTOR RATED SWITCH WITH THERMAL OVERLOADS 20A, 120V, UON, MOUNTED WITHIN SIGHT OF MOTOR.



CEILING MOUNTED PROJECTOR



MOTOR CONNECTION



ELECTRICAL CIRCUIT RUN IN CONDUIT AND CIRCUIT HOMERUN TO PANELBOARD (PANEL AND CIRCUIT DESIGNATION AS INDICATED). AS A MINIMUM CONDITION, EACH SINGLE PHASE CIRCUIT SHALL HAVE 1 #12 PHASE CONDUCTOR, 1 #12 NEUTRAL CONDUCTOR AND 1 #12 GROUNDING CONDUCTOR IN 1/2" CONDUIT. PROVIDE ADDITIONAL PHASE CONDUCTORS AS REQUIRED FOR "MULTIPLE PHASED" ELECTRICAL LOADS. PROVIDE NEUTRAL CONDUCTOR TO ALL WALL SWITCH OUTLET BOXES WHETHER REQUIRED OR NOT. PROVIDE ADDITIONAL "SWITCH LEG" CONDUCTORS TO PROVIDE THE LIGHT FIXTURE CONTROL INDICATED. MULTIPLE SINGLE PHASE CONDUCTORS MAY BE GROUPED TOGETHER IN A COMMON CONDUIT IN ACCORDANCE WITH THE NEC AND AT THE CONTRACTOR'S DISCRETION. NEUTRAL AND GROUNDING CONDUCTORS MAY BE SHARED AS ALLOWED BY THE NEC. MULTI-POLE BREAKERS SHALL BE PROVIDED IN ACCORDANCE WITH THE NEC SHOULD MULTI-WIRE BRANCH CIRCUITS BE INSTALLED. CONDUIT LARGER THAN 1/2" AND CONDUCTORS LARGER THAN #12 SHALL BE AS INDICATED.



ELECTRICAL PANELBOARD

TELECOMMUNICATIONS



TELE/DATA OUTLET, 18" AFF, UON, PROVIDE 1" C WITH WIRING STUBBED ABOVE ACCESSIBLE CEILING, OR TO CABLE TRAY OR J HOOKS AS APPLICABLE. WHERE OUTLET IS ADJACENT TO A POWER RECEPTACLE, MOUNT AT SAME ELEVATION AS POWER RECEPTACLE, UON.



TELEPHONE OUTLET, 54" AFF, UON, PROVIDE 1" C WITH WIRING STUBBED ABOVE ACCESSIBLE CEILING, OR TO CABLE TRAY OR J HOOKS AS APPLICABLE. WHERE OUTLET IS ADJACENT TO A POWER RECEPTACLE, MOUNT AT SAME ELEVATION AS POWER RECEPTACLE, UON.

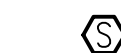


TELEVISION (TV) OUTLET, 18" AFF, UON, PROVIDE 1" C WITH WIRING STUBBED ABOVE ACCESSIBLE CEILING, OR TO CABLE TRAY OR J HOOKS AS APPLICABLE. WHERE OUTLET IS ADJACENT TO A POWER RECEPTACLE, MOUNT AT SAME ELEVATION AS POWER RECEPTACLE, UON.

FIRE ALARM



FIRE ALARM AUDIO/VISUAL (HORN/STROBE) APPLIANCE, 80" AFF, OR 6" BELOW FINISHED CEILING, WHICHEVER IS LOWER, UON. SUBSCRIPT INDICATES MINIMUM CANDELA RATING OF STROBE.



FIRE ALARM SYSTEM PHOTOELECTRIC SMOKE DETECTOR, CEILING MOUNTED

NOTIFICATION DEVICES



WALL MOUNTED HOSPITAL INTERCOM SPEAKER VOLUME CONTROL, MOUNT 46" AFF.



HOSPITAL INTERCOM SPEAKER



CONFERENCE ROOM SPEAKER

GENERAL



NEW WORK NOTE SYMBOL



DEMOLITION NOTE SYMBOL

ABBREVIATIONS

A	AMPERE
AFF	ABOVE FINISHED FLOOR
AFG	ABOVE FINISHED GRADE
AHU	AIR HANDLING UNIT
C	CONDUIT
CFL	COMPACT FLUORESCENT LAMP
CKT	CIRCUIT
CB	CIRCUIT BREAKER
EF	EXHAUST FAN
ETR	EXISTING TO REMAIN
FLA	FULL LOAD AMPS
GFI	GROUND FAULT INTERRUPTER
GND	GROUND
KVA	KILO-VOLT-AMPERES
KW	KILO-WATTS
MCA	MINIMUM CIRCUIT AMPS
MCB	MAIN CIRCUIT BREAKER
MLO	MAIN LUGS ONLY
MTD	MOUNTED
NEC	NATIONAL ELECTRICAL CODE
NF	NON-FUSED
NTS	NOT TO SCALE
OFCI	OWNER FURNISHED, CONTRACTOR INSTALLED
P	POLE
ø	PHASE
TRT	TRIPLE TUBE FLUORESCENT LAMP
TYP	TYPICAL
UON	UNLESS OTHERWISE NOTED
V	VOLT(S)
VAV	VARIABLE AIR VOLUME
W	WATTS/WIRE

three inches = one foot

one and one half inches = one foot

one and one half inches = one foot

2

one inch = one foot

2

three quarters inch = one foot

0

6"

three quarters inch = one foot

2

one half inch = one foot

4

one half inch = one foot

0

6"

one half inch = one foot

4

three eighths inch = one foot

0

4

one eighth inch = one foot

0

4

one eighth inch = one foot

0

4

one eighth inch = one foot

0

4

one eighth inch = one foot

0

4

one eighth inch = one foot

0

4

one eighth inch = one foot

0

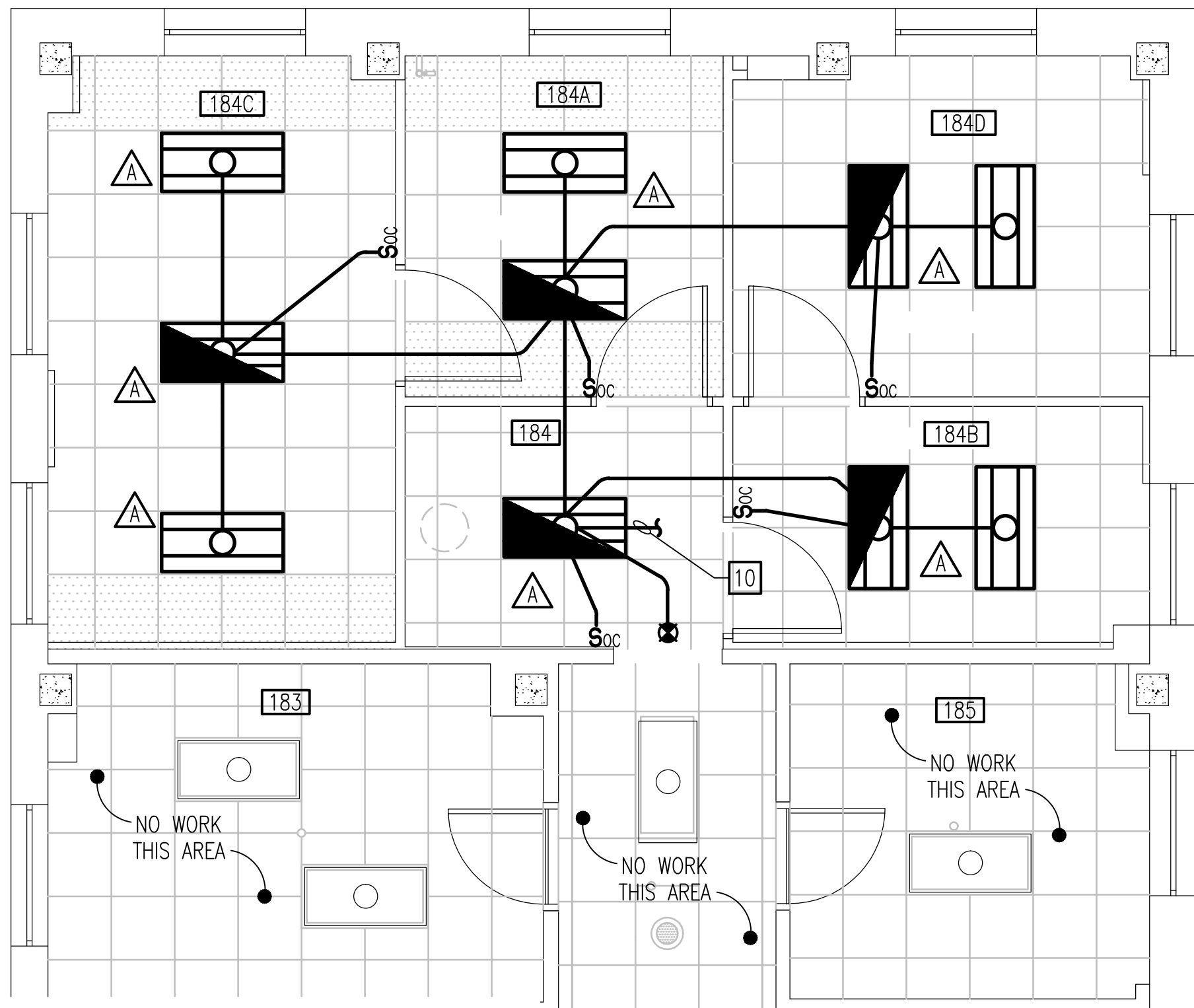
4

one eighth inch = one foot

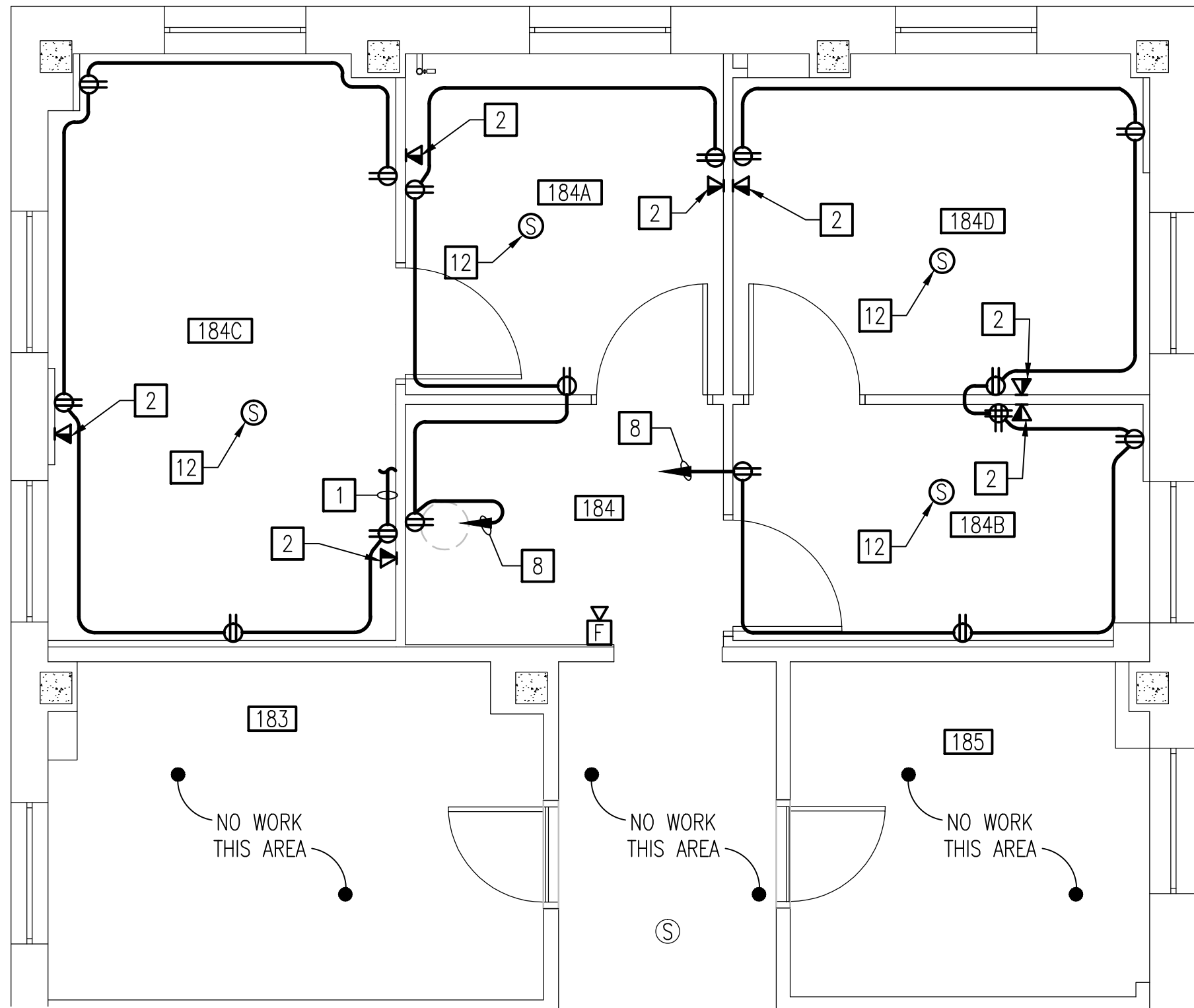


- BUILDING #1

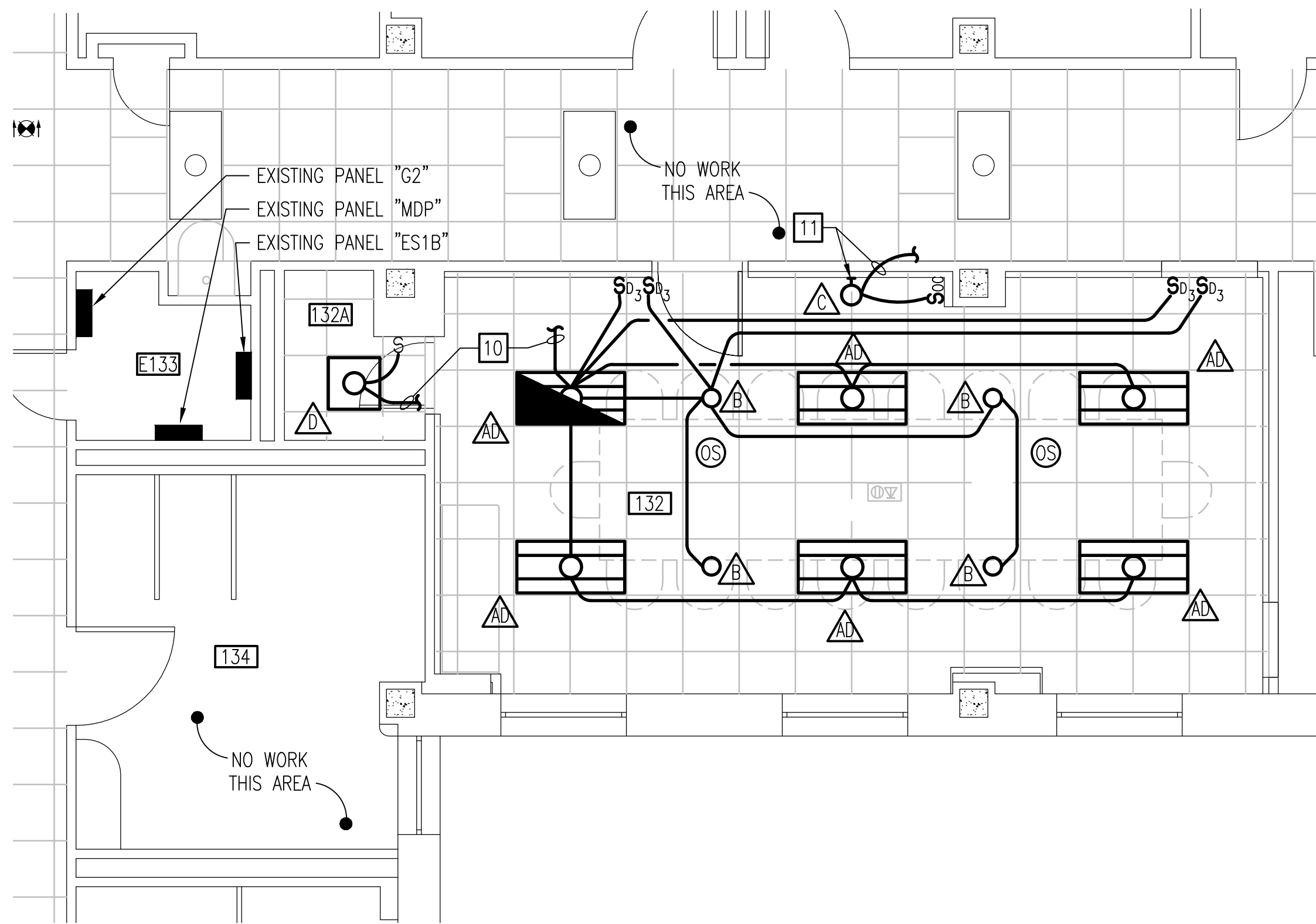
VA FORM 08-6231



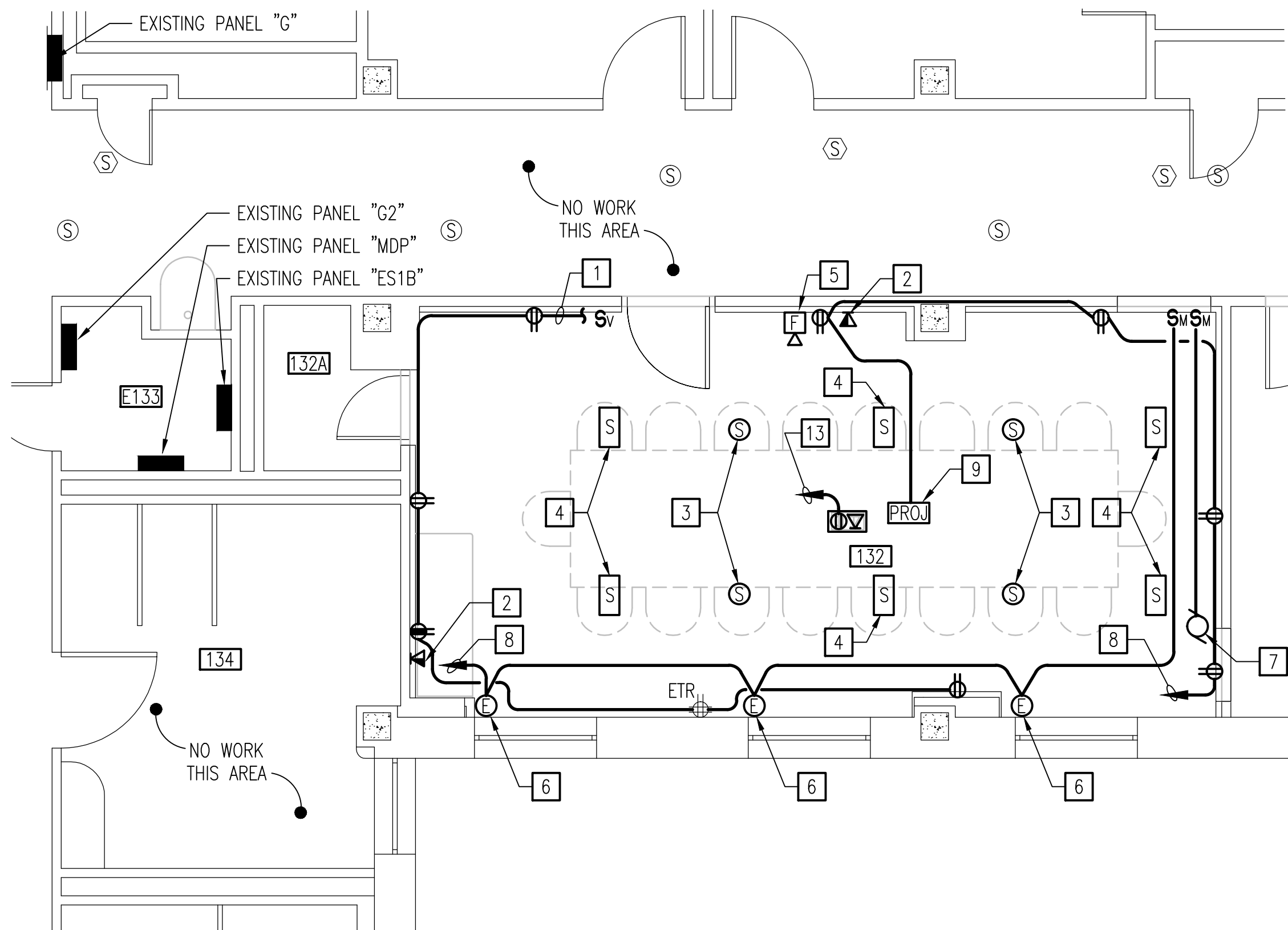
ELECTRICAL FIRST FLOOR LIGHTING PLAN AREA A – NEW WORK
SCALE: 1/4" = 1'-0"
BUILDING #1



ELECTRICAL FIRST FLOOR POWER PLAN AREA A – NEW WORK
SCALE: 1/4" = 1'-0"
BUILDING #1



ELECTRICAL FIRST FLOOR LIGHTING PLAN AREA B – NEW WORK
SCALE: 1/4" = 1'-0"
BUILDING #1

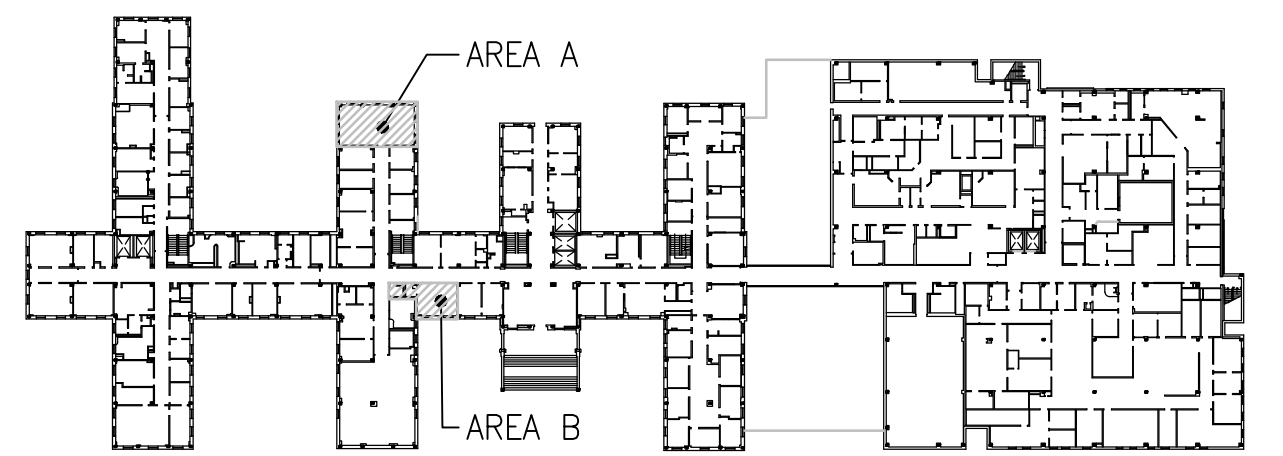


ELECTRICAL FIRST FLOOR POWER PLAN AREA B – NEW WORK
SCALE: 1/4" = 1'-0"
BUILDING #1

NEW WORK NOTES

1. CONNECT TO RECEPTACLE CIRCUIT RETAINED DURING DEMOLITION, THIS AREA, EXTEND CIRCUITING AS NECESSARY.
2. CONNECT TO TELE/DATA CIRCUIT RETAINED DURING DEMOLITION, THIS AREA, EXTEND CIRCUITING AS NECESSARY.
3. RELOCATE HOSPITAL INTERCOM SPEAKER RETAINED FROM DEMOLITION. PROVIDE ALL NECESSARY WIRING AND CONNECTORS.
4. RELOCATE CONFERENCE ROOM PROJECTOR AUDIO CIRCUITING AND SPEAKER RETAINED DURING DEMOLITION. PROVIDE ALL NECESSARY WIRING AND CONNECTORS.
5. PROVIDE SYSTEM COMPATIBLE FIRE ALARM HORN/STROBE. PROVIDE WIRING PER MANUFACTURER'S INSTRUCTIONS IN 3/4" MINIMUM. CONTRACTOR SHALL DETERMINE QUANTITY AND SIZE OF ENCLOSURE AND JUNCTION BOXES TO COMPLY WITH MANUFACTURE'S RECOMMENDED INSTALLATION REQUIREMENTS. DO NOT LOAD ANY CIRCUIT BEYOND 80% OF RATED CAPACITY. ADD ADDITIONAL CIRCUITS AS NECESSARY. PROVIDE NOTIFICATION EXTENDER PANELS, POWER SUPPLIES, ETC. AS REQUIRED.
6. MOTORIZED WINDOW SHADES, 120V. COORDINATE EXACT LOCATION OF CONNECTION WITH ARCHITECT PRIOR TO ROUGH IN.
7. CONNECT MOTORIZED SCREEN RETAINED DURING DEMOLITION. CONNECT TO CIRCUIT RETAINED DURING DEMOLITION. COORDINATE EXACT LOCATION WITH ARCHITECT PRIOR TO ROUGH IN.
8. CONNECT TO AVAILABLE 20A-1P CIRCUIT BREAKER IN PANEL "G2".
9. RELOCATE CEILING MOUNTED PROJECTOR. CONNECT TO 120V CIRCUIT AS INDICATED.
10. CONNECT TO LIGHTING CIRCUIT RETAINED DURING DEMOLITION, THIS AREA, EXTEND CIRCUITING AS NECESSARY.
11. CONNECT TO NEAREST UNSWITCHED 120V CIRCUIT. COORDINATE EXACT MOUNTING LOCATION WITH ARCHITECT PRIOR TO ROUGH-IN.
12. PROVIDE INTERCOM SPEAKERS TO MATCH EXISTING. CONNECT TO EXISTING WIRING RETAINED FROM DEMOLITION, EXTEND WIRING AS NECESSARY.
13. CONNECT TO AVAILABLE 20A-1P CIRCUIT BREAKER IN PANEL "G2". EXTEND EXISTING TELE/DATA WIRING AS NECESSARY.

ROOM SCHEDULE	
ROOM #	ROOM NAME
131	CONFERENCE ROOM
132	STORAGE
184	WAITING AREA
184A	DIRECTOR'S ASSISTANT
184B	ASSOCIATE DIRECTOR'S ASSISTANT
184C	DIRECTOR'S OFFICE
184D	ASSOCIATE DIRECTOR'S OFFICE



BUILDING 1 KEYPLAN
NO SCALE
BUILDING #1

Revisions:	Date:	CONSULTANTS: Pace COLLABORATIVE MECHANICAL ELECTRICAL ENGINEERS VIRGINIA BEACH, VA - 757-499-7223	 JAMES S. BEDOIS Lic. No. 032929 PROFESSIONAL ENGINEER	ARCHITECT: INNOVATE Architecture • Interiors 441 WASHINGTON STREET PORTSMOUTH, VA 23704 (P) 757.393.9900 (F) 757.393.9907	Drawing Title ELECTRICAL FIRST FLOOR LIGHTING AND POWER PLANS AREA A AND B - NEW WORK Approved Project Director	Project Title CONSTRUCTION OF NEW ELT OFFICES AND CONFERENCE ROOM Location FAYETTEVILLE, NORTH CAROLINA Date 03 - 14 - 12 Checked GML Drawn TKH	Project Number 565-11-131 Building Number 1 Drawing Number E101 Dwg. 11 of 13	Office of Construction and Facilities Management Department of Veterans Affairs
------------	-------	--	---	---	--	---	---	--

