

A

B

C

D

E

F

A

B

C

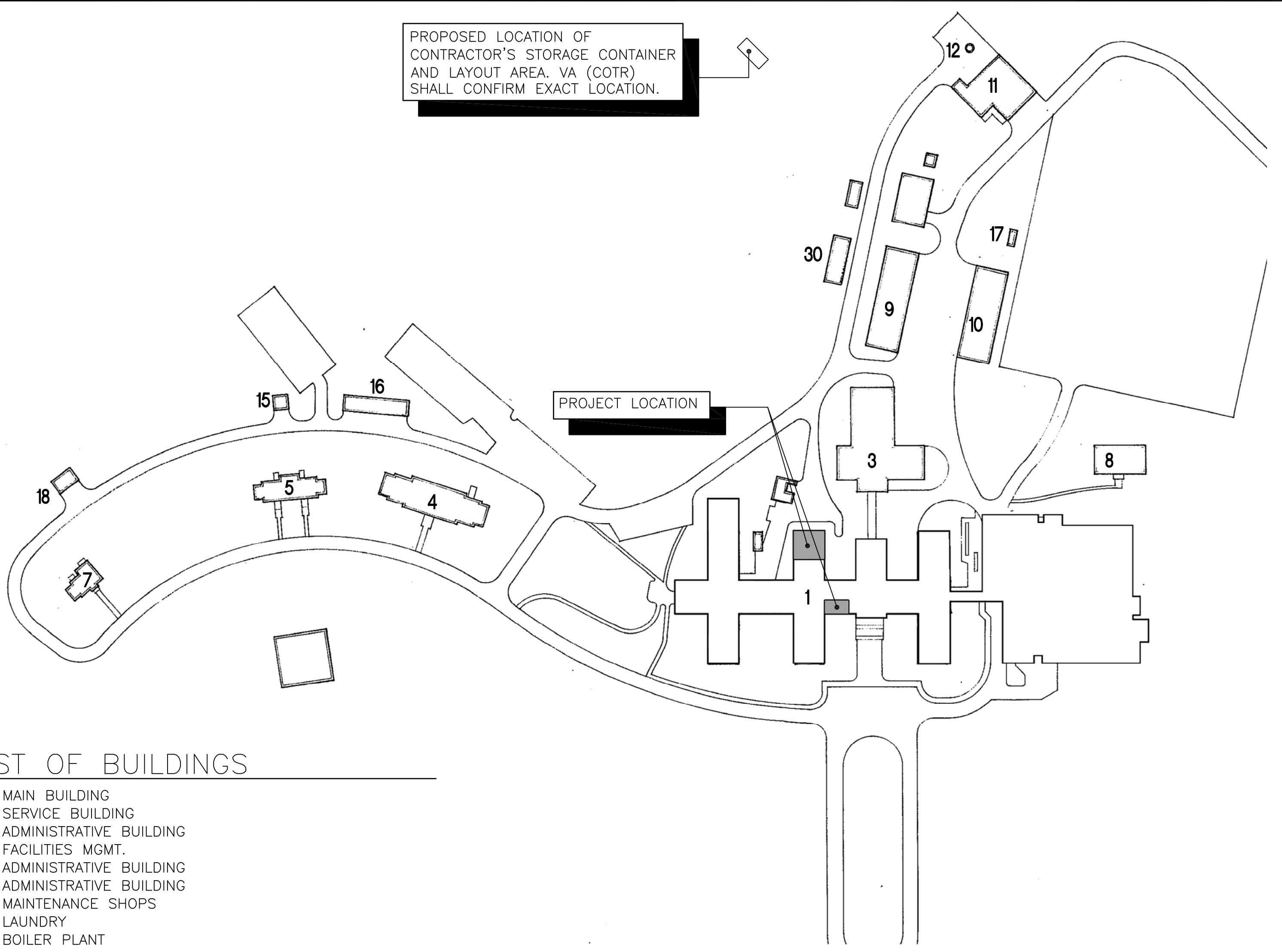
D

E

F

three inches = one foot
one and one half inches = one foot
one inch = one foot
three quarters inch = one foot
one half inch = one foot
three eighths inch = one foot
one quarter inch = one foot
one eighth inch = one foot

PROPOSED LOCATION OF
CONTRACTOR'S STORAGE CONTAINER
AND LAYOUT AREA, VA (COTR)
SHALL CONFIRM EXACT LOCATION.



LIST OF BUILDINGS

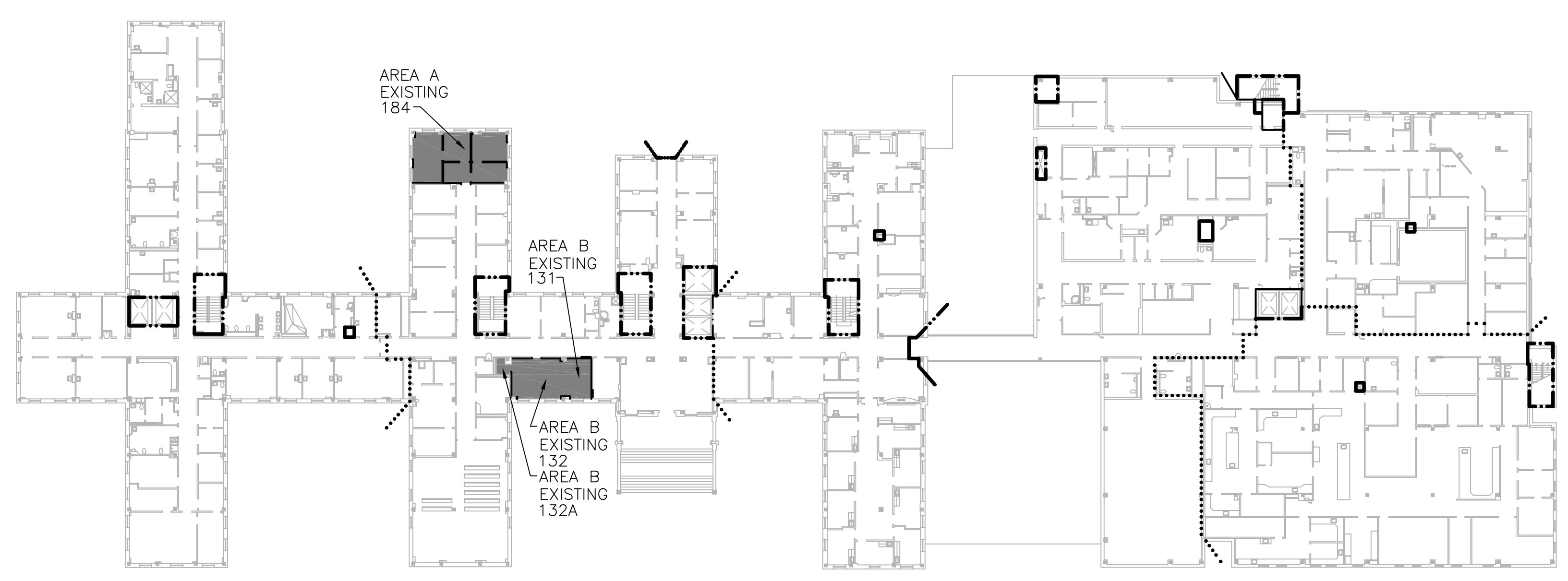
- 1- MAIN BUILDING
- 3- SERVICE BUILDING
- 4- ADMINISTRATIVE BUILDING
- 5- FACILITIES MGMT.
- 7- ADMINISTRATIVE BUILDING
- 8- ADMINISTRATIVE BUILDING
- 9- MAINTENANCE SHOPS
- 10- LAUNDRY
- 11- BOILER PLANT
- 12- STACK
- 15- ONE CAR GARAGE
- 16- EIGHT CAR GARAGE
- 17- FIRE EXTINGUISHER RECHARGE STATION
- 18- TWO CAR GARAGE
- 30- QUONSET HUT STORAGE

CONTRACTOR PARKING:

PARKING FOR CONTRACTORS SHALL BE LIMITED TO 3 SPACES AT THE BACK OF A PUBLIC LOT. THE LIMITED AMOUNT OF PARKING SHALL REQUIRE CONTRACTORS TO CARPOOL IN EACH DAY FROM OFFSITE. CONTRACTORS SHALL COORDINATE PARKING LOCATION WITH THE VA (COTR) FOR THIS PROJECT.

LOCATION MAP

NO SCALE



BUILDING 1 - FIRST FLOOR

ROOM LOCATION AND LIFE SAFETY PLAN

NO SCALE

BUILDING # 1

LIFE SAFETY PLAN LEGEND

- SMOKE PARTITION
- 1HR FIRE RATED PARTITION
- 2HR FIRE RATED PARTITION

PROJECT DATA

ADDRESS: 2300 RAMSEY STREET
FAYETTEVILLE, NORTH CAROLINA 28301

COMPLIANCE: AMERICANS WITH DISABILITIES ACT AND ARCHITECTURAL BARRIERS ACT ACCESSIBILITY GUIDELINES 2004 WITH DEPARTMENT OF VETERANS AFFAIRS BARRIER FREE DESIGN GUIDE SUPPLEMENT 2007

RENOVATED AREA:

BUILDING 1:

EXISTING OFFICES (131&132):	643.3 SQ. FT.
EXISTING CONFERENCE ROOM (184):	464.7 SQ. FT.
TOTAL:	1,108.0 SQ. FT.

PROJECT CONTACTS:

ARCHITECT: PAUL GARRISON
INNOVATE ARCHITECTURE AND INTERIORS
paul@innovate-arch.com

ELECTRICAL/
MECHANICAL
ENGINEER: BILL QUINN
PACE COLABORATIVE
billq@pace-pme.com

VA COR: JACQUELINE G. PERKINS
U.S. DEPT. OF VETERANS AFFAIRS
FACILITIES MANAGEMENT SERVICE
- PROJECT ENGINEER
Jacqueline.Perkins2@va.gov

ASBESTOS NOTE:

ACCORDING TO A SURVEY DONE MAY 27, 2010, THE ONLY ASBESTOS CONTAINING MATERIAL POTENTIALLY IN THE AREA MAY BE FLOOR MASTIC. IF ANY PIPE INSULATION CONTAINING ASBESTOS IS DISCOVERED IN THE AREA IT WILL BE HANDLED AS A DIFFERING SITE CONDITION AND HANDLED ACCORDINGLY. IF THE CONTRACTOR SUSPECTS THAT ACM HAS BEEN ENCOUNTERED THEN THEY ARE TO NOTIFY THE COR, NOT DISTURB THE SUSPECTED ACM AND AWAIT FURTHER INSTRUCTION. SEE ASBESTOS SURVEY ATTACHED WITH SPECS AND DRAWING SET.

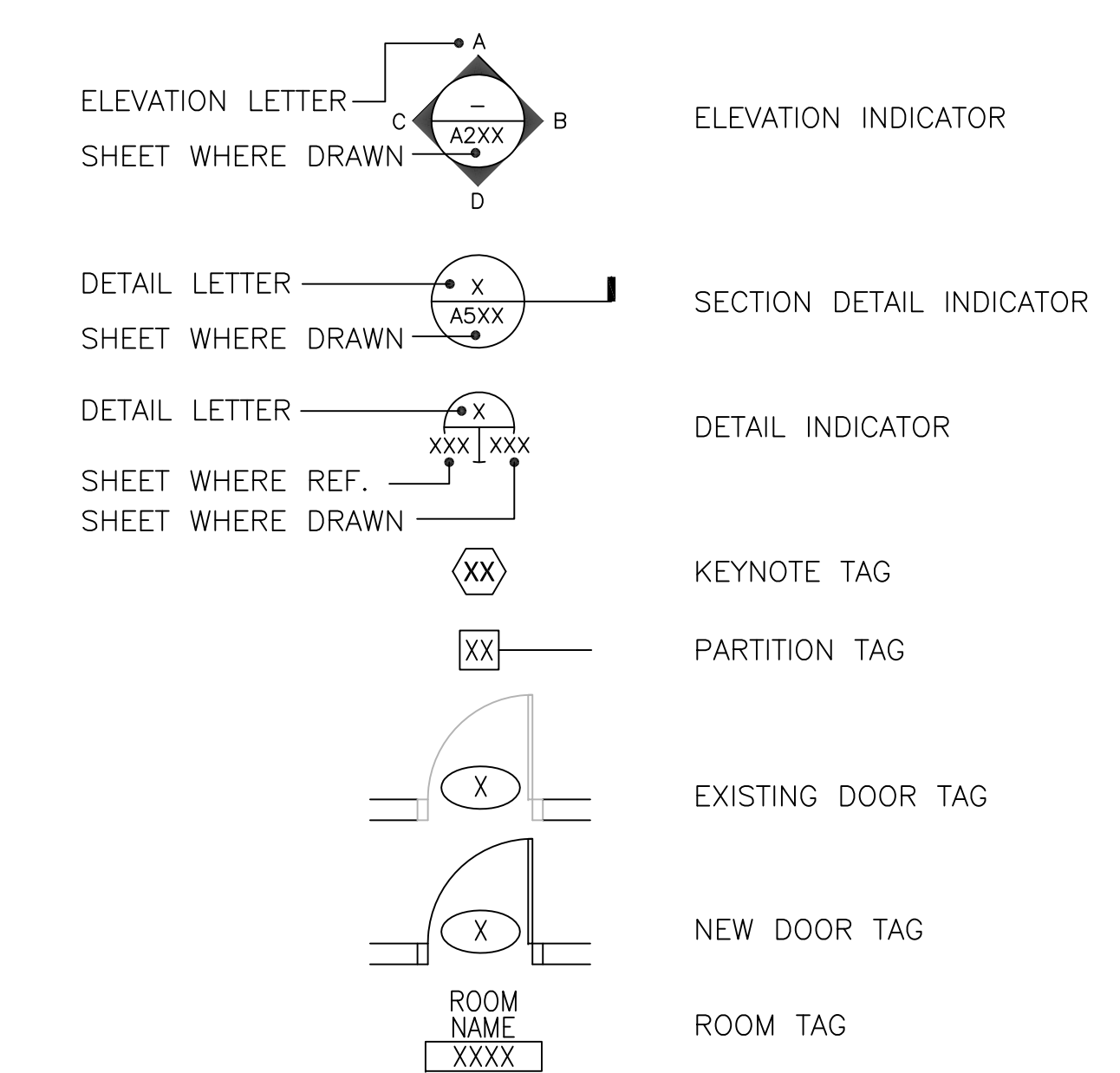
THE VA SHALL BE RESPONSIBLE FOR COORDINATING WITH THE G.C. ON REMOVAL AND STORAGE OF ALL EXISTING VA EQUIPMENT, FURNITURE AND ITEMS THAT ARE REQUIRED TO BE MOVED AND STORED TO COMPLETE THE WORK. THE VA SHALL COORDINATE WITH G.C. ON ANY ITEMS MARKED ON DRAWINGS AS REMOVED THAT THE VA WOULD LIKE TO SALVAGE IN LIEU OF BEING DISCARDED.

SCHEDULE OF DRAWINGS

GI001	LOCATION MAP, ROOM LOCATION AND LIFE SAFETY PLAN, LIFE SAFETY PLAN LEGEND, SCHEDULE OF DRAWINGS, ASBESTOS NOTE, SYMBOLS AND ABBREVIATION LEGEND AND PROJECT DATA
ARCHITECTURAL	
AD101	FIRST FLOOR PLAN AREA A AND B - DEMOLITION FLOOR PLANS, NOTES, LEGEND AND INFECTION CONTROL NOTES
AD102	FIRST FLOOR PLAN AREA A AND B - DEMOLITION CEILING PLANS, NOTES, LEGEND AND INFECTION CONTROL NOTES
AS001	DOOR SCHEDULE, HARDWARE SCHEDULE, SIGNAGE SCHEDULE, FRAME TYPES, DOOR TYPES, DOOR ACCESSORIES, ROOM FINISH, INFECTION CONTROL NOTES AND FINISH PRODUCT SCHEDULE AND NOTES
AS101	FIRST FLOOR PLAN AREA A AND B - NEW WORK FLOOR PLANS, NOTES, LEGEND, PARTITION SCHEDULE AND INFECTION CONTROL NOTES
AS102	FIRST FLOOR PLAN AREA A AND B - NEW WORK CEILING PLANS, NOTES, LEGEND AND INFECTION CONTROL NOTES
AS501	CASEWORK ELEVATION, CASEWORK SECTION AND DETAILS
MECHANICAL	
HD101	MECHANICAL FIRST FLOOR PLANS AREA A & B - DEMOLITION, GENERAL NOTES, LEGEND AND ABBREVIATIONS
ELECTRICAL	
E001	ELECTRICAL LEGEND, GENERAL NOTES AND ABBREVIATIONS
ED101	ELECTRICAL FIRST FLOOR PLANS AREA A & B - DEMOLITION
E101	ELECTRICAL FIRST FLOOR LIGHTING AND POWER PLANS AREA A & B - NEW WORK
E501	ELECTRICAL FIXTURE PLATE
FIRE PROTECTION	
FP101	FIRE PROTECTION FIRST FLOOR SPRINKLER PLANS AREA A & B - NEW WORK, LEGEND AND ABBREVIATIONS

DRAWINGS SHALL BE 30"x42". DO NOT SCALE.

DRAWING SYMBOLS LEGEND



DRAWING TITLE

SCALE: X/X" = X" ALT: #X BUILDING: #X

BUILDING NUMBER
ALTERNATE NUMBER WHERE APPLICABLE
DRAWING SCALE

ABBREVIATION LEGEND

THIS IS A PARTIAL LIST OF ABBREVIATIONS, CONTACT ARCHITECT FOR ANY ABBREVIATIONS INCLUDED IN THE SET WHICH ARE UNCLEAR.

A.F.F.	ABOVE FINISH FLOOR	MTL.	METAL
B.E.J.	BUILDING EXPANSION JOINT	NO.	NUMBER
BLDG.	BLOCKING	NIC	NOT IN CONTRACT
BLK.	BLOCKING	OFCI	OWNER FURNISHED CONTRACTOR INSTALLED
C.J.	CONTROL JOINT	OFOI	OWNER FURNISHED OWNER INSTALLED
C.L.	CENTER LINE	O.H.	OPPOSITE HAND
CLG.	CEILING	PTD.	PAINTED
COL.	COLUMN	P.T.	PRESSURE TREATED
CONC.	CONCRETE	PLAM.	PLASTIC LAMINATE
CONT.	CONTINUOUS	REF.	REFERENCE
CPT.	CARPET	REQ'D.	REQUIRED
C.T.	CERAMIC TILE	R.B.	RUBBER BASE
DIA.	DIAMETER	SOWD	SOLID CORE WOOD DOOR
DWG.	DRAWINGS	S.F.	SQUARE FOOT
ELEV.	ELEVATION	SIM.	SIMILAR
E.O.S.	EDGE OF SLAB	SP.	SPEAKER
E.W.C.	ELECTRIC WATER COOLER	S.S.	STAINLESS STEEL
EXIST.	EXISTING	STD.	STANDARD
F.D.	FLOOR DRAIN	STL.	STEEL
F.E.C.	FIRE EXTINGUISHER CABINET	STRUCT.	STRUCTURAL
F.O.	FACE OF	TFCI	TENANT FURNISHED CONTRACTOR INSTALLED
F.O.S.	FACE OF SLAB	TFI	TENANT FURNISHED TENANT INSTALLED
F.R.T.	FIRE RETARDANT TREATED	T.O.S.	TOP OF STEEL
F.S.	FLOOR SINK	TYP.	TYPICAL
GALV.	GALVANIZED	UL	UNDERWRITER LABORATORY
GWB	GYPSUM WALL BOARD	U.O.N.	UNLESS OTHERWISE NOTED
HC	HANDICAPPED	VCT	VINYL COMPOSITION TILE
HM	HOLLOW METAL	VERT.	VERTICAL
HORIZ.	HORIZONTAL	WVC	VINYL WALL COVERING
INSUL.	INSULATION	W/	WITH
J.B.E.	JOIST BEARING ELEVATION	W/O	WITHOUT
MAX.	MAXIMUM	W.R.	WATER RESISTANT
MIN.	MINIMUM		
MFR.	MANUFACTURER		

G.C. SHALL VISIT SITE PRIOR TO BID AND THOROUGHLY FAMILIARIZE THEMSELVES WITH EXISTING CONDITIONS. FAILURE TO DO SO WILL NOT BE BASIS FOR CHANGE ORDERS.

Revisions:	CONSULTANTS: MECHANICAL ELECTRICAL ENGINEERS VIRGINIA BEACH, VA - 757-499-7223		ARCHITECT: 441 WASHINGTON STREET PORTSMOUTH, VA 23704 (P) 757.393.9900 (F) 757.393.9907	Drawing Title LOCATION MAP, ROOM LOCATION AND LIFE SAFETY PLAN, LIFE SAFETY PLAN LEGEND, SCHEDULE OF DRAWINGS, ASBESTOS NOTE, SYMBOLS AND ABBREVIATION LEGEND, AND PROJECT DATA Approved Project Director	Project Title CONSTRUCTION OF NEW ELT OFFICES AND CONFERENCE ROOM Location FAYETTEVILLE, NORTH CAROLINA Date 03 - 14 - 12 Checked PG Drawn DM	Project Number 565-11-131 Building Number 1 Drawing Number GI001 Dwg. 1 of 13	Office of Construction and Facilities Management
-------------------	---	--	---	---	---	--	---

DEMOLITION LEGEND

- ITEM TO BE REMOVED
--- EXISTING ITEM TO REMAIN
--- DEMOLITION TAG

DEMOLITION NOTES

NOTES ARE FOR THIS SHEET ONLY

- CAREFULLY REMOVE DOOR, H.M. FRAME, ALL ASSOCIATED HARDWARE AND FASTENERS COMPLETE.
- CAREFULLY REMOVE WALL COMPLETE TO STRUCTURE ABOVE WHERE INDICATED.
- CAREFULLY REMOVE OR MODIFY ELECTRICAL OUTLET, ALL ASSOCIATED WIRING AND FASTENERS AS INDICATED. SEE ELECTRICAL DWG'S FOR ADDITIONAL INFORMATION.
- CAREFULLY REMOVE OR MODIFY LIGHT SWITCH, ALL ASSOCIATED WIRING AND FASTENERS AS INDICATED. SEE ELECTRICAL DWG'S FOR ADDITIONAL INFORMATION.
- CAREFULLY REMOVE EMPTY JUNCTION BOX, COVER AND ALL ASSOCIATED FASTENERS AS INDICATED. SEE ELECTRICAL DWG'S FOR ADDITIONAL INFORMATION.
- CAREFULLY REMOVE TELE/ DATA COMMUNICATION BOX, ALL ASSOCIATED WIRING AND FASTENERS COMPLETE. SEE ELECTRICAL DWG'S FOR ADDITIONAL INFORMATION.
- CAREFULLY REMOVE OR MODIFY WALL MOUNTED FIRE ALARM STROBE. SEE ELECTRICAL DWG'S FOR ADDITIONAL INFORMATION.
- CAREFULLY REMOVE OR MODIFY THERMOSTAT, ALL ASSOCIATED WIRING AND FASTENERS AS INDICATED. SEE MECHANICAL DWG'S FOR ADDITIONAL INFORMATION.
- CAREFULLY REMOVE SIGNAGE COMPLETE.
- CAREFULLY REMOVE WOOD DOOR, ALL ASSOCIATED HARDWARE AND FASTENERS COMPLETE. EXISTING H.M. FRAME TO REMAIN.
- CAREFULLY REMOVE ALL CERAMIC FLOOR TILE AND TILE WALL BASE COMPLETE. REMOVE GROUT AND SETTING BED DOWN TO EXISTING CONCRETE FLOOR SLAB THIS SPACE COMPLETE.
- CAREFULLY REMOVE (±4'-0") TILE WAINSCOTING, BACKER BOARD METAL LATH AND SETTING BED COMPLETE.
- CAREFULLY REMOVE SURFACE MOUNTED WALL CONDUIT AND ALL ASSOCIATED FASTENERS COMPLETE. SEE ELECTRICAL DWG'S FOR ADDITIONAL INFORMATION.
- REMOVE FAN COIL UNIT, PIPING, MOUNTING AND HARDWARE COMPLETE. REMOVE PORTION OF DUCT TO INSIDE WALL, INSULATE, CAP AND SEAL AIRTIGHT. CAP PIPING BELOW FLOOR SLAB. SEE MECHANICAL DRAWINGS FOR ADDITIONAL INFORMATION.
- LINE INDICATES EXTENT OF SHEET VINYL FLOORING REMOVAL.
- CAREFULLY REMOVE CARPET, ALL ASSOCIATED ITEMS, GLUE AND RESIDUE DOWN TO EXISTING CONCRETE FLOOR SLAB COMPLETE AND REMOVE ALL RUBBER WALL BASE COMPLETE THIS SPACE.
- CAREFULLY REMOVE VINYL THRESHOLD COMPLETE.
- EXISTING TERRAZZO THRESHOLD TO REMAIN.
- EXISTING SHEET VINYL FLOORING TO REMAIN. G.C. SHALL COORDINATE EXTENT OF EXISTING TO REMAIN SHEET VINYL WITH NEW WORK PLAN. SEE NEW WORK PLAN SHEET AS101 FOR ADDITIONAL INFORMATION.
- CAREFULLY REMOVE VERTICAL BLINDS AND ALL ASSOCIATED HARDWARE ITEMS COMPLETE.
- CAREFULLY REMOVE WALL MOUNTED TELEVISION, MOUNTING BRACKET AND ALL ASSOCIATED FASTENERS COMPLETE. SALVAGE AND RETURN TO OWNER. SEE ELECTRICAL DWG'S FOR ADDITIONAL INFORMATION.
- CAREFULLY REMOVE PROJECTOR SCREEN CONTROL SWITCH, BOX, COVER, ALL ASSOCIATED WIRING AND FASTENERS COMPLETE. SEE ELECTRICAL DWG'S FOR ADDITIONAL INFORMATION.
- CAREFULLY REMOVE SHEET VINYL FLOOR, GLUE AND RESIDUE COMPLETE DOWN TO EXISTING CONCRETE FLOOR SLAB AND REMOVE RUBBER WALL BASE COMPLETE IN THIS SPACE.
- CAREFULLY REMOVE/MODIFY LIGHT SWITCH W/ ELECTRICAL OUTLET, ALL ASSOCIATED WIRING AND FASTENERS AS INDICATED. SEE ELECTRICAL DWG'S FOR ADDITIONAL INFORMATION.
- CAREFULLY REMOVE TOILET PAPER DISPENSER AND ALL ASSOCIATED FASTENERS COMPLETE.
- CAREFULLY REMOVE SOAP DISPENSER AND ALL ASSOCIATED FASTENERS COMPLETE.
- CAREFULLY REMOVE TOILET SEAT COVER DISPENSER AND ALL ASSOCIATED FASTENERS COMPLETE.
- CAREFULLY REMOVE MIRROR AND ALL ASSOCIATED FASTENERS COMPLETE.
- CAREFULLY REMOVE TOILET AND ALL ASSOCIATED FASTENERS COMPLETE. CAP PLUMBING BELOW EXISTING CONCRETE FLOOR SLAB. SEE MECHANICAL DWG'S. FOR ADDITIONAL INFORMATION.
- CAREFULLY REMOVE SINK AND ALL ASSOCIATED FASTENERS COMPLETE. CAP PLUMBING IN WALL. SEE MECHANICAL DWG'S. FOR ADDITIONAL INFORMATION.
- CAREFULLY REMOVE TOWEL ROD AND ALL ASSOCIATED FASTENERS COMPLETE.
- CAREFULLY REMOVE VINYL WALL BASE TO EXTENT INDICATED.
- CAREFULLY REMOVE FLOORING AND GLUE RESIDUE DOWN TO EXISTING CONCRETE FLOOR SLAB AS INDICATED FOR NEW INFILL.
- QUAD OUTLET EXISTING TO REMAIN.
- CAP PIPES IN WALL AS REQUIRED. SEE MECHANICAL DRAWINGS.
- REMOVE DATA OUTLET IN FLOOR SLAB. SEE ELECTRICAL DRAWINGS.

G.C. SHALL PATCH FLOORS WHERE DEMOLITION OF CONDUIT AND PIPING HAVE OCCURRED. G.C. SHALL COORDINATE WITH VA ON AFTER HOURS WORK WHICH REQUIRES BELOW SLAB SUPPORT. IT WILL BE THE G.C.'S RESPONSIBILITY TO REMOVE AND REINSTALL CEILINGS WHETHER OWN OR ACT IN LOCATIONS OF REQUIRED PATCHING. AREAS OF DEMOLITION AND NEW WORK IN FLOOR SLABS AND IN CEILING BELOW SHALL BE DONE SUCH AS TO NOT AFFECT ONGOING OPERATIONS. PATCHES SHALL BE LIKE NEW.

GENERAL DEMOLITION NOTES

- WHERE ITEMS ARE NOTED AS REMOVE OR MODIFY G.C. SHALL REFER TO NEW WORK DRAWINGS AND COORDINATE IF ITEMS ARE TO BE REMOVED, REMOVED AND RELOCATED, OR MODIFIED TO FIT INTO NEW WALL.
- G.C. SHALL REMOVE ALL WALL AND FLOOR STOPS COMPLETE.
- G.C. SHALL NOTIFY ARCHITECT OF ITEMS THAT ARE INDICATED TO BE REMOVED THAT ARE STILL OPERATIONAL PRIOR TO DEMOLITION.
- PRIOR TO DEMOLITION, G.C. SHALL WALK SPACE WITH ARCHITECT AND OWNER TO IDENTIFY ITEMS TO BE SALVAGED FOR REUSE OR TURNED OVER TO THE OWNER.
- CARE SHALL BE TAKEN DURING DEMOLITION TO PROTECT ALL EXISTING WALLS AND EXISTING CONSTRUCTION INDICATED TO REMAIN. COORDINATE WITH NEW WORK DRAWINGS.
- ANY ITEMS DAMAGED BY THE CONTRACTOR OR BY PERSONS UNDER THE SUPERVISION OF THE GENERAL CONTRACTOR OR SUBCONTRACTOR THAT ARE NOT LABELED TO BE REMOVED OR DEMOLISHED SHALL BE REPAIRED/REPLACED TO LIKE NEW CONDITION AT THE CONTRACTOR'S EXPENSE.
- CONTRACTOR SHALL DISPOSE OF ALL DEMOLISHED ITEMS UNLESS NOTED OTHERWISE AS SALVAGED FOR REUSE OR AS DIRECTED BY THE VA COTR.
- SEE DEMOLITION CEILING PLANS SHEET AD102 FOR ADDITIONAL INFORMATION.
- G.C. SHALL PROVIDE NEGATIVE AIR PRESSURE IN THE ROOMS BEING MODIFIED TO PREVENT THE SPREAD OF AIRBORNE DUST/PARTICLES TO OTHER OCCUPIED AREAS OF THE HOSPITAL. SEE SPECIFICATIONS.
- G.C. SHALL PROVIDE CONSTRUCTION AND WARNING SIGNS AS REQ'D. BY THE VA COTR.
- G.C. SHALL MAINTAIN THE EXISTING BUILDING IN A WATERTIGHT STATE THROUGHOUT CONSTRUCTION. ANY DAMAGE CAUSED BY G.C. OR G.C. SUBCONTRACTORS SHALL BE REPAIRED TO MATCH EXISTING LIKE NEW.
- G.C. SHALL STORE ALL MATERIALS OUT OF THE WEATHER AND IN SUCH A MANNER AS TO NOT DAMAGE. G.C. IS RESPONSIBLE FOR SECURITY OF ALL ITEMS. ANY MATERIALS DAMAGED DUE TO IMPROPER STORAGE SHALL BE REPLACED AT THE CONTRACTOR'S EXPENSE.
- G.C. SHALL MAINTAIN A FULLY SEALED ENTRY POINT INTO EACH ROOM BEING RENOVATED. ROOMS MUST BE SEALED TO PREVENT THE TRANSFER OF DUST AND DEBRIS TO ADJACENT SPACES.
- G.C. SHALL MAINTAIN STICKY MATS ON BOTH SIDES OF THE ENTRY POINTS TO THE ROOMS BEING RENOVATED. CHANGE MATS REGULARLY TO PREVENT TRANSFER OF FOOT TRAFFIC DUST AND DEBRIS.

GENERAL INFECTION CONTROL NOTES:

- ALL WORK TO BE DONE IS IN A MEDICAL FACILITY REQUIRING A HIGH LEVEL OF INFECTION CONTROL PROCEDURES. THE VA INFECTION CONTROL STAFF SHALL MEET WITH THE SELECTED G.C. TO DISCUSS AND VERIFY THE EXACT INFECTION CONTROL RISK ASSESSMENT TO BE USED WHICH INCLUDES CONSTRUCTION PROJECT TYPE, PATIENT RISK GROUP AND THE CLASS OF PRECAUTIONS.
- G.C. SHALL PROVIDE FULLY SEALED ENTRANCES TO EACH SPACE BEING RENOVATED. PROVIDE STICKY MATS ON BOTH SIDES OF ENTRY DOORS. (CHANGE REGULARLY TO PREVENT TRANSFER OF DUST AND DEBRIS TO ADJACENT SPACES).
- ALL DEBRIS SHALL BE COVERED WHEN BEING REMOVED FROM RENOVATED SPACES AND TRANSPORTED TO THE DUMPSTER.
- ALL SUPPLY/RETURN EXHAUST/RADIATOR GRILLES SHALL BE COVERED TO PREVENT TRANSFER OF DUST TO OTHER SPACES OR DAMAGE TO EQUIPMENT.
- PROVIDE NEGATIVE AIR IN EACH RENOVATED SPACE.
- THESE ARE JUST MINIMUM INFECTION CONTROL REQUIREMENTS AND SHALL BE UPDATED USING THE INFECTION CONTROL RISK ASSESSMENT MATRIX OF PRECAUTIONS FOR CONSTRUCTION AND RENOVATIONS BY THE VA TO PINPOINT THE EXACT INFECTION CONTROL MEASURES NEEDED FOR THIS PROJECT.

GENERAL FLOOR DEMOLITION AND REPAIR NOTE FOR PIPING IN A CONCRETE FLOOR SLAB:

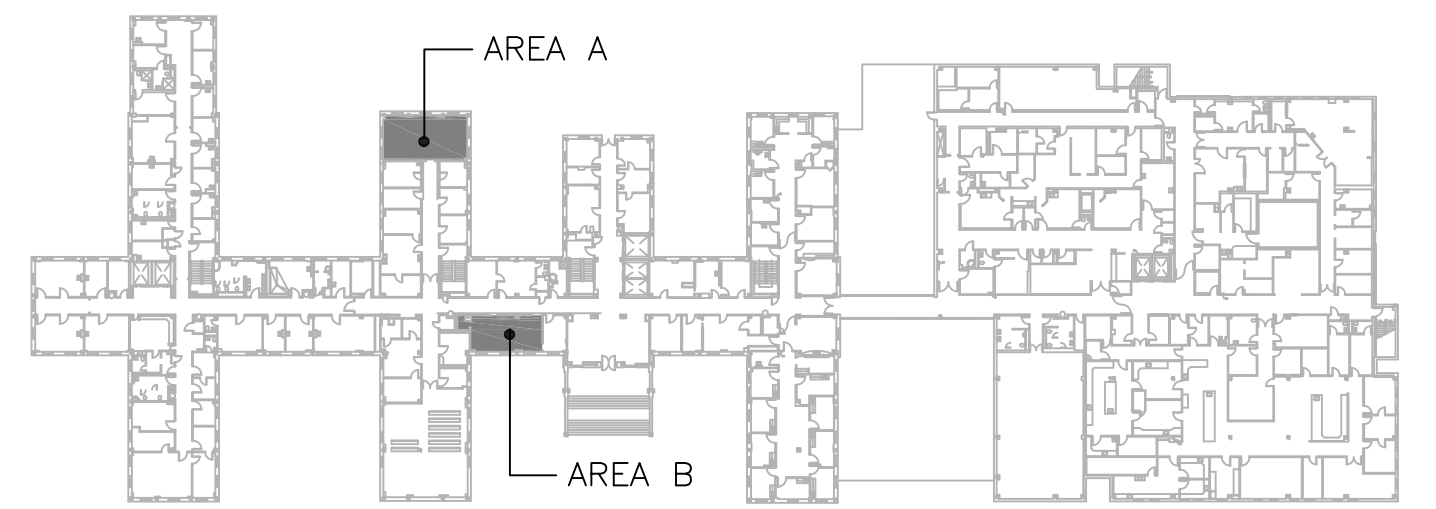
EXISTING FLOOR SYSTEM IS A CONCRETE PAN-JOIST SYSTEM. ALL PIPING EXTENDING UNDER EXISTING CONCRETE FLOOR SLAB SHALL BE LOCATED WITHIN THE PAN (SLAB PORTION) OF THE PAN-JOIST SYSTEM.

THE G.C. SHALL UTILIZE ONE OF THE FOLLOWING METHODS TO DETERMINE CONCRETE PAN AND JOIST LOCATION:

DRILL A 1/4" DIAMETER X 4" LONG PILOT HOLE AT THE CENTERLINE OF THE PROPOSED SANITARY LINE. THE PAN PORTION OF THE FLOOR SYSTEM SHOULD BE A MAXIMUM OF 3" TO 4" THICK. IF THE PILOT HOLE GOES THROUGH THE SLAB COMPLETELY, THE ADDITIONAL HOLE SHALL BE DRILLED AT THE EDGE OF THE PROPOSED HOLE IN ALL FOUR DIRECTIONS TO VERIFY THE HOLE WILL BE COMPLETELY IN THE PAN AREA.

UTILIZE AN X-RAY OR A GROUND PENETRATING RADAR (GPR) SYSTEM TO DETERMINE THE VARIATIONS IN THE SLAB THICKNESS TO LOCATE THE LIMITS OF THE CONCRETE PAN AND LOCATE THE LINES WITHIN THE PAN.

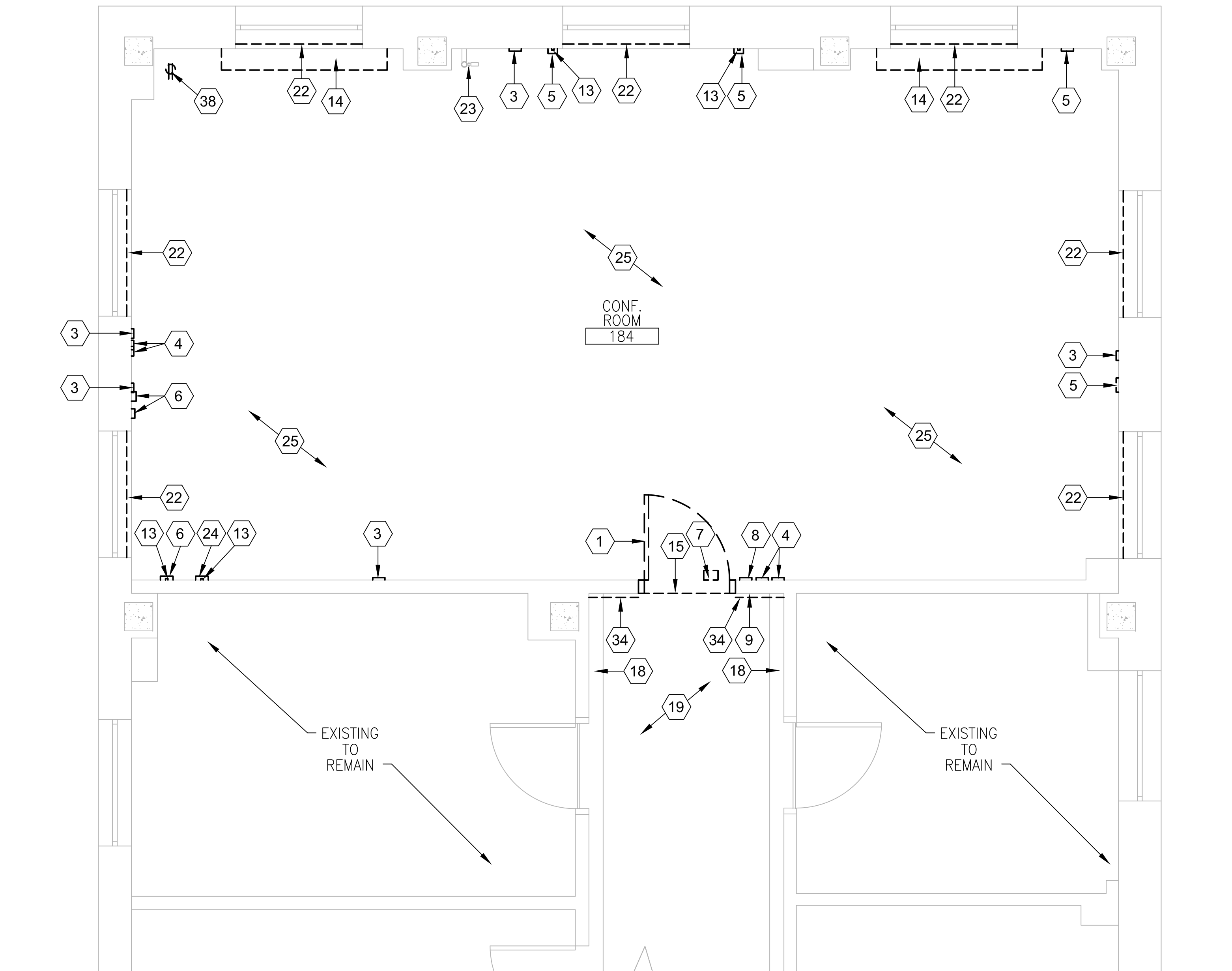
IN FILLING THE EXISTING FLOOR PENETRATIONS (UP TO 8" DIAMETER) AS FOLLOWS: SECURE A 16 GAUGE FLAT PLATE TO THE UNDERSIDE OF THE SLAB. PLATE SHALL EXTEND 2" BEYOND THE SLAB OPENING ON ALL SIDES. ATTACH THE PLATE TO THE EXISTING SLAB WITH 4 - 3/16" DIAMETER HLTI KWIK-CON II+ WITH 1" EMBEDMENT - LOCATE THE ANCHOR 1" CLEAR FROM EXISTING OPENING. IN-FILL THE EXISTING OPENING WITH 3,000 PSI NON-SHRINK GROUT.



BUILDING 1 KEYPLAN

NOT TO SCALE

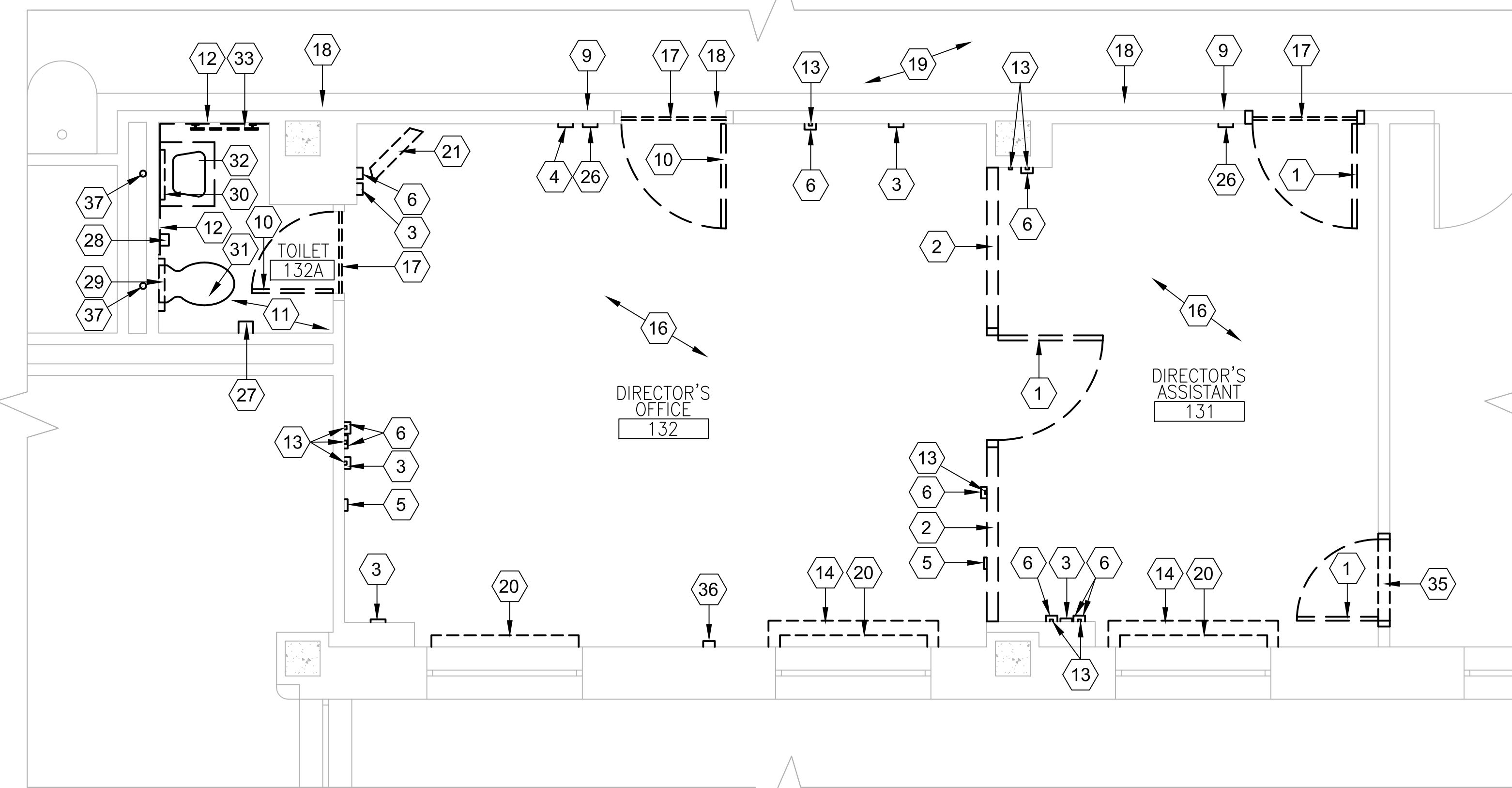
BUILDING: #1



FIRST FLOOR PLAN AREA A - DEMOLITION PLAN ROOM 184

3/8" = 1'

BUILDING: #1

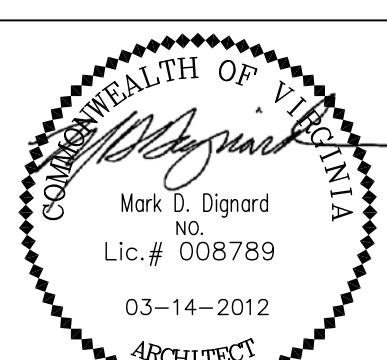
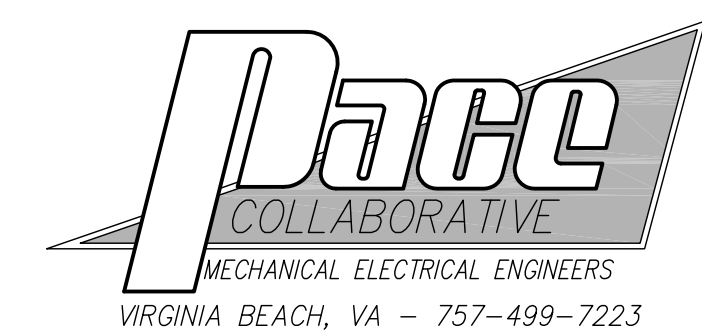


FIRST FLOOR PLAN AREA B - DEMOLITION PLAN ROOMS 131, 132 & 132A

3/8" = 1'

BUILDING: #1

CONSULTANTS:



ARCHITECT:



Drawing Title
FIRST FLOOR PLAN AREA A AND B -
DEMOLITION FLOOR PLAN, NOTES, LEGEND
AND GENERAL INFECTION CONTROL NOTES

Approved Project Director

Project Title
CONSTRUCTION OF NEW ELT
OFFICES AND CONFERENCE ROOM

Location
FAYETTEVILLE, NORTH CAROLINA

Date
03 - 14 - 12

Checked
PG

Drawn
DM

Project Number
565-11-131

Building Number
1

Drawing Number
AD101
Dwg. 2 of 13

Office of
Construction
and Facilities
Management



A

B

C

D

E

F

16

8

4

0

0

0

0

three inches = one foot
6"

one and one half inches = one foot
6"

one inch = one foot
6"

one inch = one foot
6"

three quarters inch = one foot
6"

one half inch = one foot
6"

one half inch = one foot
6"

three eighths inch = one foot
6"

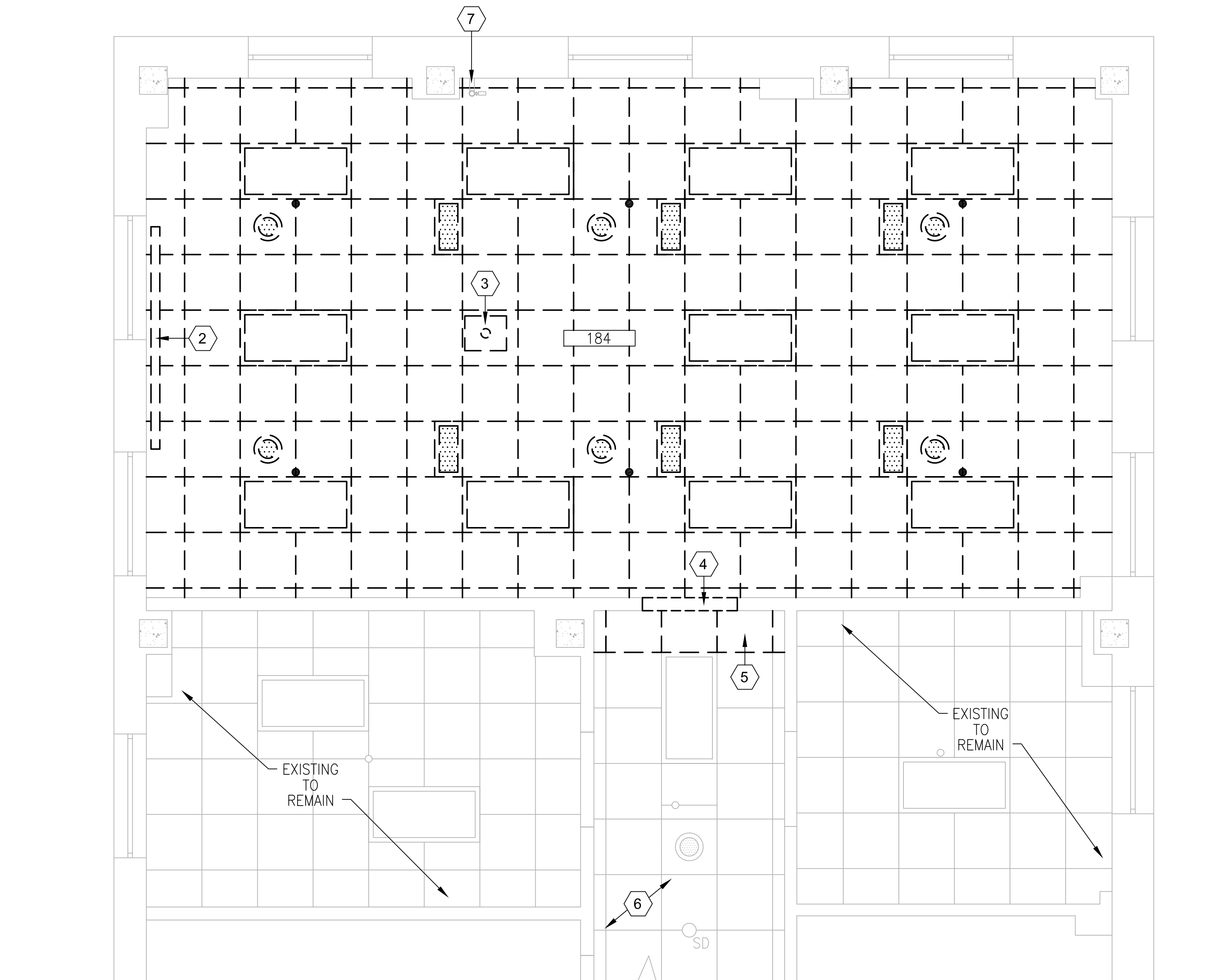
one quarter inch = one foot
6"

one quarter inch = one foot
6"

one eighth inch = one foot
6"

one eighth inch = one foot
6"

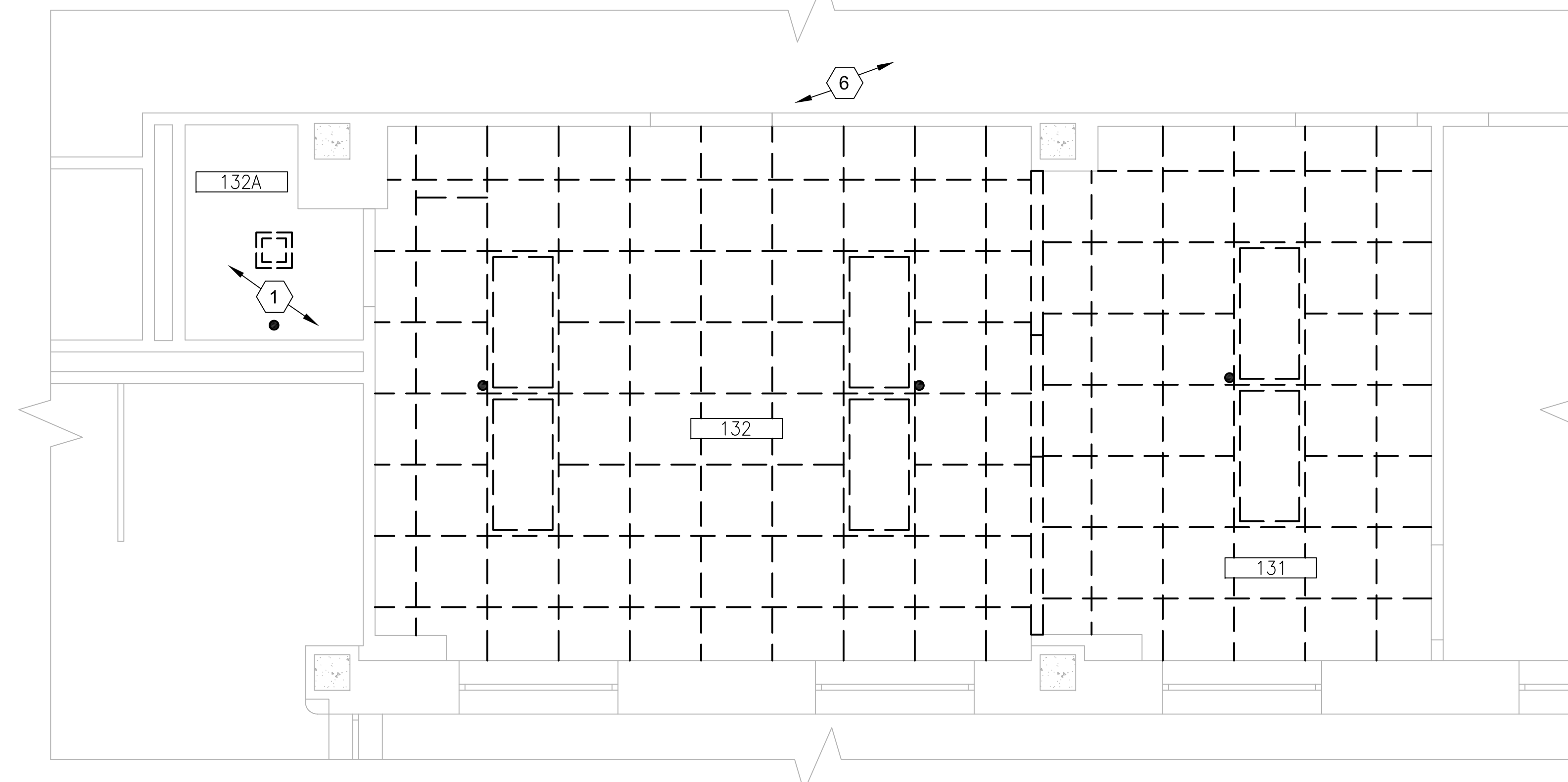
one eighth inch = one foot
6"



FIRST FLOOR PLAN AREA A – DEMOLITION CEILING PLAN ROOM 184

3/8" = 1'

BUILDING: #1

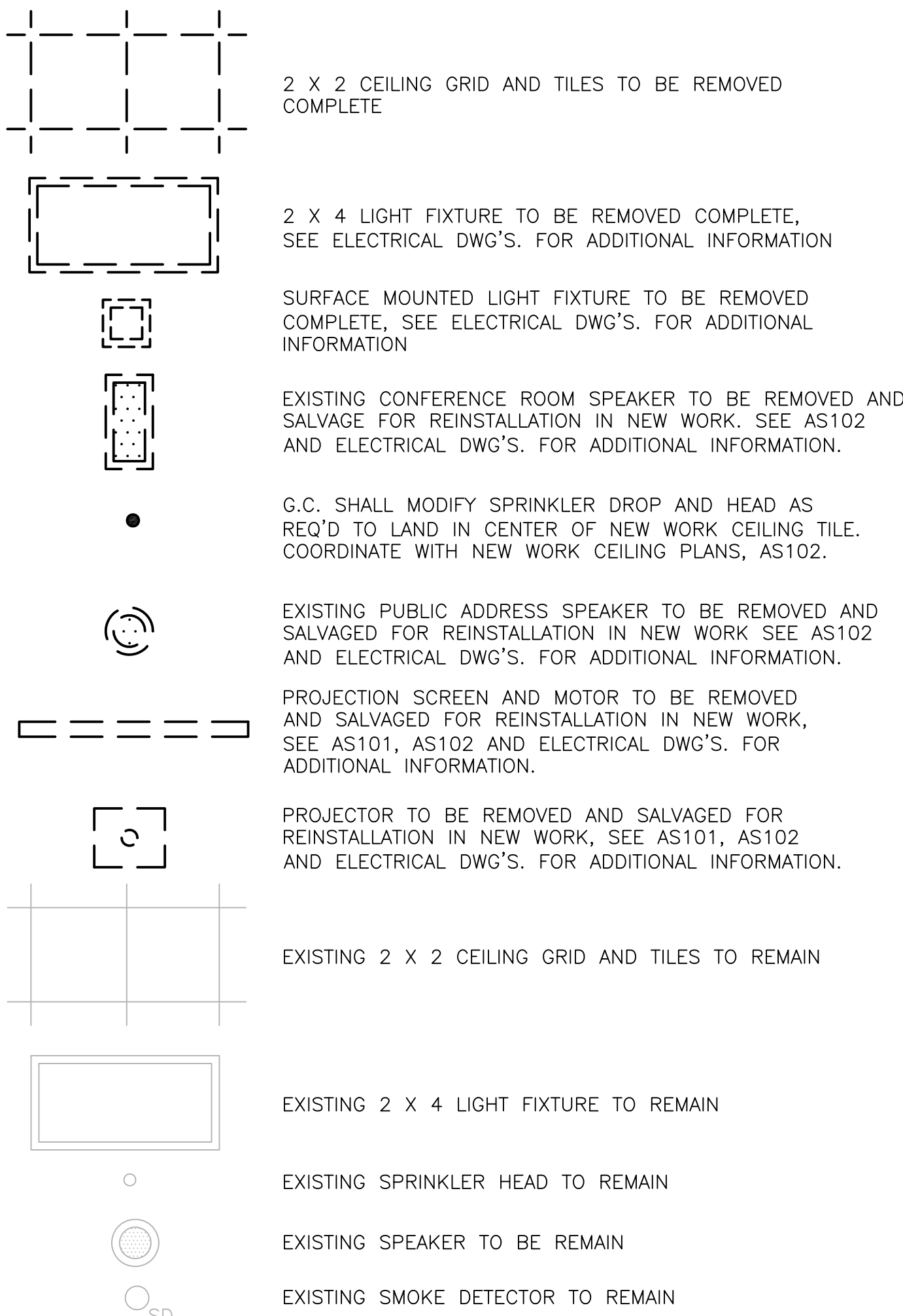


FIRST FLOOR PLAN AREA B – DEMOLITION CEILING PLAN ROOMS 131, 132 AND 132A

3/8" = 1'

BUILDING: #1

DEMOLITION CEILING PLAN LEGEND



DEMOLITION CEILING PLAN NOTES

1. REMOVE EXISTING CMB CEILING, ALL ASSOCIATED STRUCTURE AND FASTENERS COMPLETE.
2. CAREFULLY REMOVE CEILING MOUNTED PROJECTION SCREEN, ALL ELECTRICAL WIRING, CONDUIT AND CONTROLS. SALVAGED FOR REINSTALLATION IN NEW WORK. SEE AS101, AS102 AND ELECTRICAL DWG'S. FOR ADDITIONAL INFORMATION.
3. CAREFULLY REMOVE CEILING MOUNTED PROJECTOR, MOUNTING BRACKET, ALL ASSOCIATED FASTENERS, WIRING, AND CONDUIT. SEE AS101, AS102 AND ELECTRICAL DWG'S. FOR ADDITIONAL INFORMATION.
4. REMOVE CMU/CLAY WALL COMPLETE ABOVE DEMOLISHED DOOR TO STRUCTURE ABOVE.
5. CAREFULLY REMOVE PORTION OF CEILING GRID BACK TO CLOSEST MAIN TEE AND TILE AS REQUIRED TO REMOVE WALL AS INDICATION IN DEMOLITION PLAN.
6. POSSIBLE LOCATION OF CEILING TILES TO BE REMOVED AND REINSTALLED AS REQUIRED TO RUN ANY NEW CIRCUITS TO ELECTRICAL ROOM. COORDINATE WITH ELECTRICAL DRAWINGS.
7. EXISTING SPRINKLER PRESSURE TEST LOCATION.

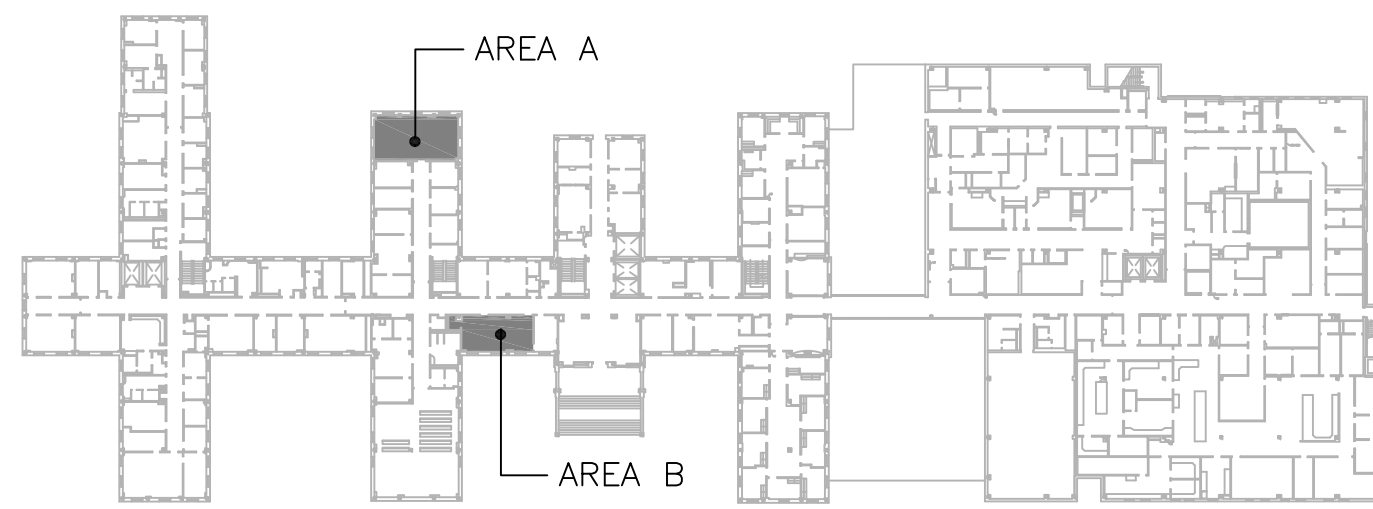
GENERAL DEMOLITION CEILING PLAN NOTES

1. ALL CEILING MOUNTED ITEMS INCLUDING BUT NOT LIMITED TO THOSE ITEMS SHOWN TO BE REMOVED PER DEMOLITION CEILING PLAN LEGEND SHALL BE REMOVED COMPLETE INCLUDING ANY HANGERS, CLIPS, FASTENERS AND ANY OTHER ASSOCIATED CEILING ITEMS. G.C. SHALL SALVAGE ITEMS TO BE STORED PER OWNERS DIRECTION OR REINSTALLED PER NEW WORK DWG'S. IF SALVAGED ITEMS ARE TO BE REINSTALLED G.C. SHALL CLEAN AND REPAIR ITEM TO ENSURE PROPER WORKING ORDER AND LIKE NEW CONDITION.
2. G.C. SHALL COORDINATE DEMOLITION OF CEILING AND CEILING MOUNTED ITEMS WITH NEW WORK CEILING PLANS.
3. G.C. SHALL COORDINATE ALL CEILING DEMOLITION WORK WITH ARCHITECTURAL, ELECTRICAL, MECHANICAL DEMOLITION, FIRE PROTECTION PLAN AND NEW WORK DWG'S.
4. G.C. SHALL CAREFULLY REMOVE ALL CEILING MOUNTED FIRE SAFETY/LIFE SAFETY ITEMS AND SALVAGE FOR REINSTALLATION. COORDINATE WITH NEW WORK CEILING PLANS AND ELECTRICAL DWG'S.
5. G.C. SHALL NOTIFY ARCHITECT DURING CEILING DEMOLITION OF ANY ITEMS FOUND ABOVE GRID THAT MAY INTERFERE WITH NEW WORK PLANS.
6. G.C. SHALL PROVIDE NEGATIVE AIR PRESSURE IN THE ROOMS BEING MODIFIED TO PREVENT THE SPREAD OF AIRBORNE DUST/PARTICLES TO OTHER OCCUPIED AREAS OF THE HOSPITAL, SEE SPECIFICATIONS.
7. G.C. SHALL PROVIDE CONSTRUCTION AND WARNING SIGNS AS DIRECTED BY THE VA COTR.
8. G.C. SHALL MAINTAIN THE EXISTING BUILDING IN A WATERTIGHT STATE THROUGHOUT CONSTRUCTION. ANY DAMAGED CAUSED BY G.C. OR G.C. SUBCONTRACTORS SHALL BE REPAIRED TO MATCH EXISTING LIKE NEW.
9. LOCATIONS OF PARTIAL DEMOLITION OF CEILING GRID ARE SCHEMATIC AND G.C. MAY REQUIRE MORE DEMOLITION OF GRID TO GET BACK TO A MAIN TEE.
10. G.C. SHALL MAINTAIN A FULLY SEALED ENTRY POINT INTO EACH ROOM/AREA BEING RENOVATED. ROOMS MUST BE SEALED TO PREVENT THE TRANSFER OF DUST AND DEBRIS TO ADJACENT SPACES.
11. PRIOR TO DEMOLITION, G.C. SHALL WALK SPACE WITH ARCHITECT AND OWNER TO IDENTIFY ITEMS TO BE SALVAGED FOR REUSE OR TURNED OVER TO OWNER.
12. PRIOR TO DEMOLITION, G.C. SHALL FIELD VERIFY ALL EXISTING CEILING HEIGHTS. COORDINATE CEILING HEIGHTS WITH NEW WORK. SEE NEW WORK CEILING PLAN SHEET AS102 FOR ADDITIONAL INFORMATION.

GENERAL INFECTION CONTROL NOTES:

1. ALL WORK TO BE DONE IS IN A MEDICAL FACILITY REQUIRING A HIGH LEVEL OF INFECTION CONTROL PROCEDURES. THE VA INFECTION CONTROL STAFF SHALL MEET WITH THE SELECTED G.C. TO DISCUSS AND VERIFY THE EXACT INFECTION CONTROL RISK ASSESSMENT TO BE USED WHICH INCLUDES CONSTRUCTION PROJECT TYPE, PATIENT RISK GROUP AND THE CLASS OF PRECAUTIONS.
2. G.C. SHALL PROVIDE FULLY SEALED ENTRANCES TO EACH SPACE BEING RENOVATED. PROVIDE STICKY MATS ON BOTH SIDES OF ENTRY DOORS. (CHANGE REGULARLY TO PREVENT TRANSFER OF DUST AND DEBRIS TO ADJACENT SPACES).
3. ALL DEBRIS SHALL BE COVERED WHEN BEING REMOVED FROM RENOVATED SPACES AND TRANSPORTED TO THE DUMPSTER.
4. ALL SUPPLY/RETURN EXHAUST/RADIATOR GRILLES SHALL BE COVERED TO PREVENT TRANSFER OF DUST TO OTHER SPACES OR DAMAGE TO EQUIPMENT.
5. PROVIDE NEGATIVE AIR IN EACH RENOVATED SPACE.
6. THESE ARE JUST MINIMUM INFECTION CONTROL REQUIREMENTS AND SHALL BE UPDATED USING THE INFECTION CONTROL RISK ASSESSMENT MATRIX OF PRECAUTIONS FOR CONSTRUCTION AND RENOVATIONS BY THE VA TO PINPOINT THE EXACT INFECTION CONTROL MEASURES NEEDED FOR THIS PROJECT.

G.C. SHALL PATCH FLOORS WHERE DEMOLITION OF CONDUIT AND PIPING HAVE OCCURRED. G.C. SHALL COORDINATE WITH VA ON AFTER HOURS WORK WHICH REQUIRES BELOW SLAB SUPPORT. IT WILL BE THE G.C.'S RESPONSIBILITY TO REMOVE AND REINSTALL CEILINGS WHETHER CMB OR ACT IN LOCATIONS OF REQUIRED PATCHING. AREAS OF DEMOLITION AND NEW WORK IN FLOOR SLABS AND IN CEILING BELOW SHALL BE DONE SUCH AS TO NOT AFFECT ONGOING OPERATIONS. PATCHES SHALL BE LIKE NEW.



BUILDING 1 KEYPLAN
NOT TO SCALE

BUILDING: #1

Revisions:	Date:	CONSULTANTS: DATE COLLABORATIVE MECHANICAL ELECTRICAL ENGINEERS VIRGINIA BEACH, VA – 757-499-7223		ARCHITECT: INNOVATE Architecture • Interiors 441 WASHINGTON STREET PORTSMOUTH, VA 23704 (P) 757.393.9900 (F) 757.393.9907	Drawing Title FIRST FLOOR PLAN AREA A AND B - DEMOLITION CEILING PLANS, NOTES, LEGEND AND GENERAL INFECTION CONTROL NOTES Approved Project Director	Project Title CONSTRUCTION OF NEW ELT OFFICES AND CONFERENCE ROOM Location FAYETTEVILLE, NORTH CAROLINA Date 03 - 14 - 12 Checked PG Drawn DM	Project Number 565-11-131 Building Number 1 Drawing Number AD102 Dwg. 3 of 13	Office of Construction and Facilities Management Department of Veterans Affairs
------------	-------	---	--	---	---	---	---	--

A

B

C

D

E

F

F

F

F

F

F

F

F

A

B

C

D

E

F

F

F

F

F

F

F

F

A

B

C

D

E

F

F

F

F

F

F

F

F

A

B

C

D

E

F

F

F

F

F

F

F

F

A

B

C

D

E

F

F

F

F

F

F

F

F

A

B

C

D

E

F

F

F

F

F

F

F

F

A

B

C

D

E

F

F

F

F

F

F

F

F

A

B

C

D

E

F

F

F

F

F

F

F

F

A

B

C

D

E

F

F

F

F

F

F

F

F

A

B

C

D

E

F

F

F

F

F

F

F

F

A

B

C

D

E

F

F

F

F

F

F

F

F

A

B

C

D

E

F

F

F

F

F

F

F

F

A

B

C

D

E

F

F

F

F

F

F

F

F

A

B

C

D

E

F

F

F

F

F

F

F

F

A

B

C

D

E

F

F

F

F

F

F

F

F

A

B

C

D

E

F

F

F

F

F

F

F

F

A

B

C

D

E

F

F

F

F

F

F

F

F

A

B

C

D

E

F

F

F

F

F

F

F

F

A

B

C

D

E

F

F

F

F

F

F

F

F

A

B

C

D

E

F

F

F

F

F

F

F

F

A

B

C

D

E

F

F

F

F

F

F

F

F

A

B

C

D

E

F

F

F

F

F

F

F

F

A

B

C

D

E

F

F

F

F

F

F

F

F

A

B

C

D

E

F

F

F

F

F

F

F

F

A

B

C

D

E

F

F

F

F

F

F

F

F

A

B

C

D

E

F

F

F

F

F

F

F

F

A

B

C

D

E

F

F

F

F

F

F

F

F

A

B

C

D

E

F

F

F

F

F

F

F

F

A

B

C

D

E

F

F

F

F

F

F

F

F

A

B

C

D

E

F

F

F

F

F

F

F

F

A

B

C

D

E

F

F

F

F

F

F

F

F

A

B

C

D

E

F

F

F

<

A

B

C

D

E

F

A

B

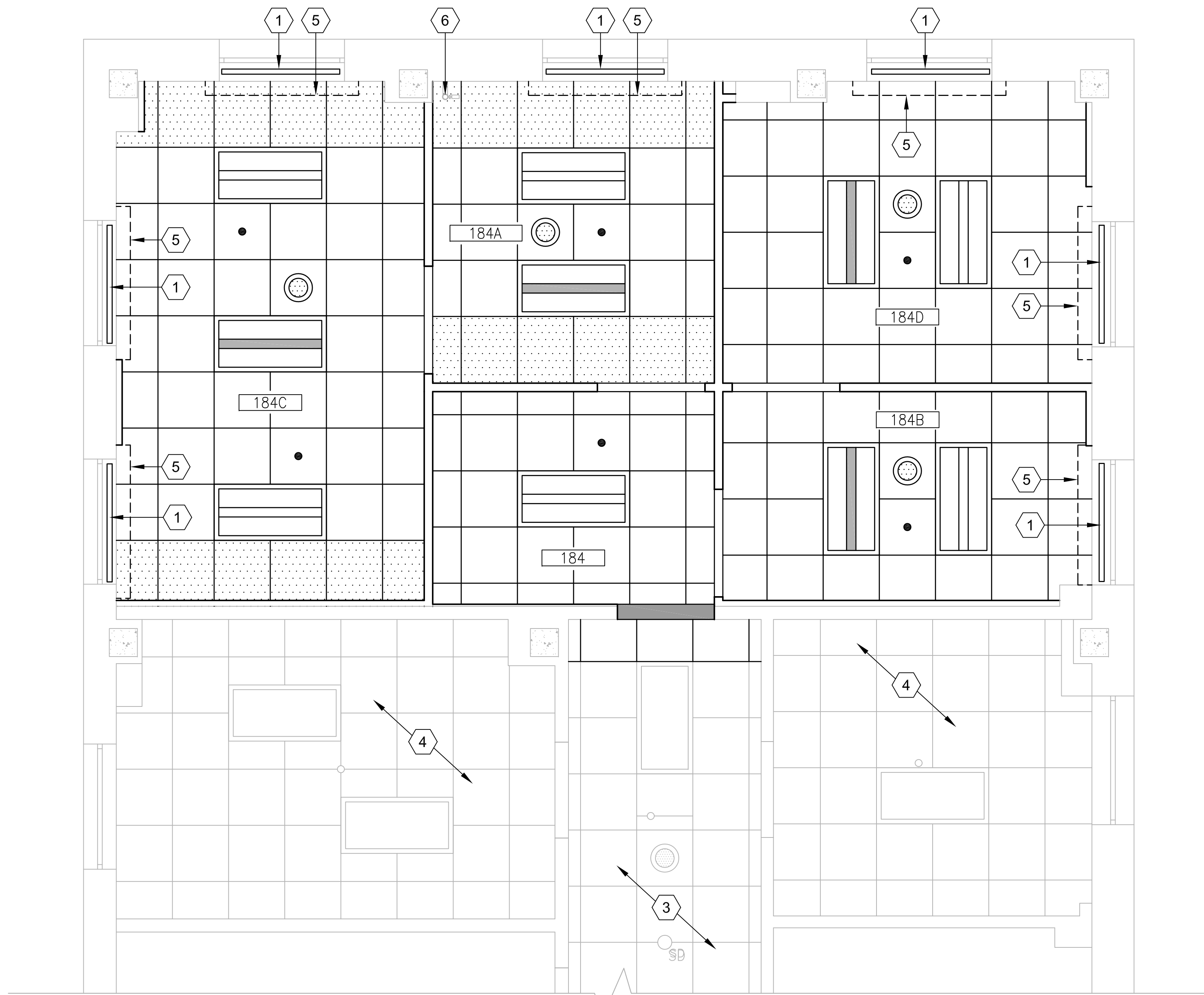
C

D

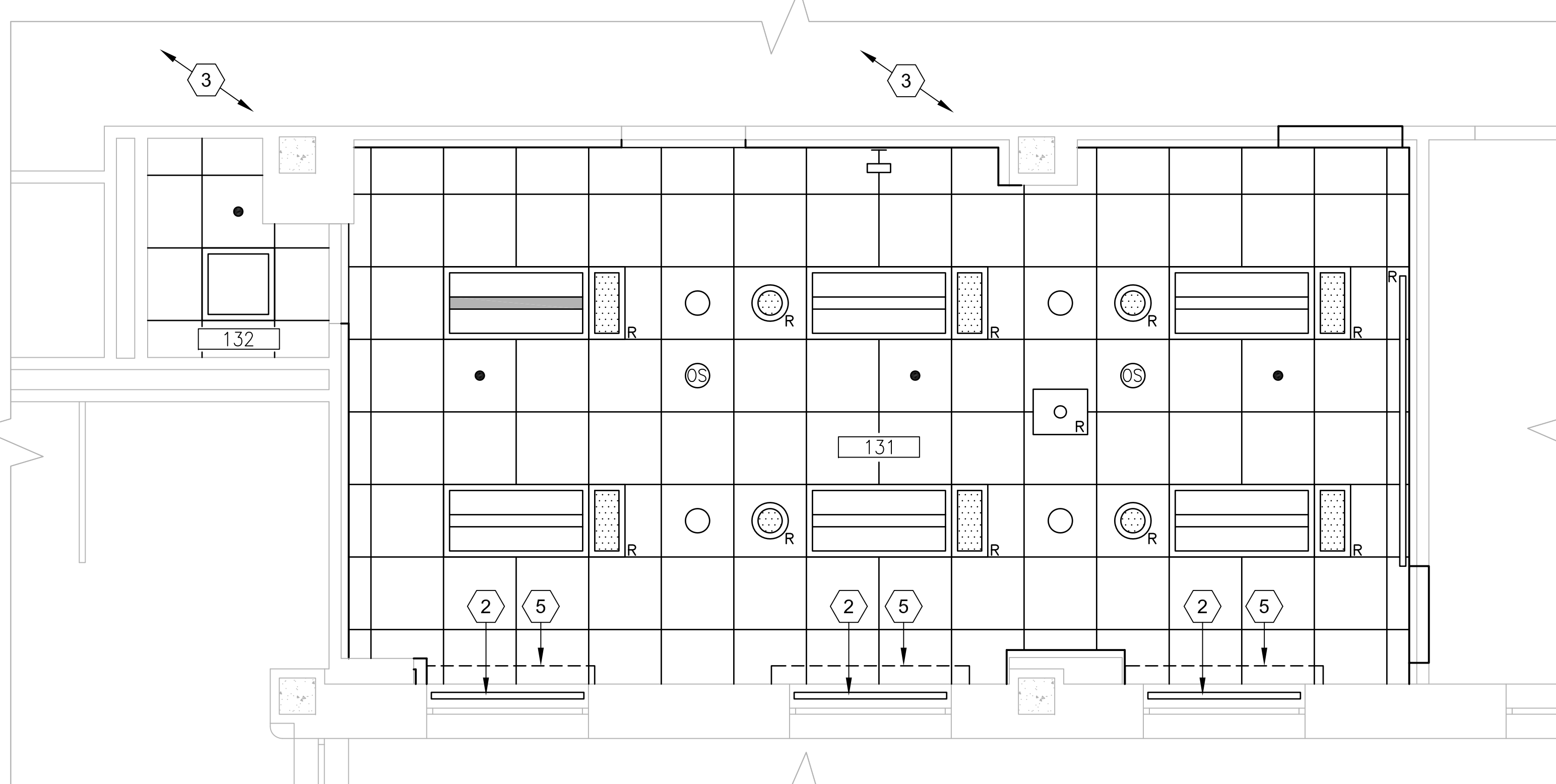
E

F

one eighth inch = one foot
0 4 8 16
one quarter inch = one foot
0 4 8
three eighths inch = one foot
0 4 8
one half inch = one foot
0 6
three quarters inch = one foot
0 6
one inch = one foot
0 6
one and one half inches = one foot
0 6 1
three inches = one foot
0 6



FIRST FLOOR PLAN AREA A – NEW WORK CEILING PLAN ROOM 184, 184A, 184B, 184C & 184D
3/8" = 1' BUILDING: #1



FIRST FLOOR PLAN AREA B – NEW WORK CEILING PLAN ROOM 131 & 132
3/8" = 1' BUILDING: #1

NEW WORK CEILING PLAN LEGEND

- NEW 2 X 2 CEILING GRID AND TILES, SEE SPECIFICATIONS AND PRODUCT FINISH SCHEDULE
- UTILIZE CUT 2 X 4 TILES TO AVOID SLIVER TILES SMALLER THAN 6"
- EXISTING CEILING GRID AND TILES TO REMAIN
- CWB BULKHEAD @ 7'-6" A.F.F TO FINISHED FACE
- 2 X 4 DIRECT/INDIRECT TROFFER FLUORESCENT LIGHT FIXTURE, SEE SPECIFICATIONS AND ELECTRICAL DWG'S FOR ADDITIONAL INFORMATION
- 2 X 4 EMERGENCY DIRECT/INDIRECT TROFFER FLUORESCENT LIGHT FIXTURE, SEE SPECIFICATIONS AND ELECTRICAL DWG'S FOR ADDITIONAL INFORMATION
- 2 X 2 PRISMATIC LENSED FLUORESCENT LIGHT FIXTURE, SEE SPECIFICATIONS AND ELECTRICAL DWG'S FOR ADDITIONAL INFORMATION
- NEW 8" DIMMABLE CAN LIGHT FIXTURE, SEE ELECTRICAL DWG'S FOR ADDITIONAL INFORMATION
- WALL MOUNTED PICTURE LIGHT, SEE ELECTRICAL DWG'S FOR ADDITIONAL INFORMATION
- PUBLIC ADDRESS SPEAKER, SEE ELECTRICAL DWG'S FOR ADDITIONAL INFORMATION
- RELOCATED CONFERENCE ROOM SPEAKER, SEE ELECTRICAL DWG'S
- CENTER SPRINKLER HEAD IN TILE, SEE FIRE PROTECTION DWG'S FOR ADDITIONAL INFORMATION
- RELOCATED PUBLIC ADDRESS SPEAKER, SEE ELECTRICAL DWG'S FOR ADDITIONAL INFORMATION
- RELOCATED CEILING MOUNTED PROJECTOR, SEE ELECTRICAL DWG'S FOR ADDITIONAL INFORMATION
- RELOCATED CEILING MOUNTED PROJECTOR SCREEN
- OCCUPANCY SENSOR, SEE ELECTRICAL DWG'S
- EXISTING 2 X 4 FLUORESCENT LIGHT FIXTURE TO REMAIN
- EXISTING SURFACE MOUNTED LIGHT FIXTURE TO REMAIN
- EXISTING SPEAKER TO REMAIN
- EXISTING SMOKE DETECTOR TO REMAIN
- EXISTING SPRINKLER HEAD TO REMAIN

NEW WORK CEILING PLAN NOTES

- MINI BLINDS MOUNTING TRACK. SEE SPECIFICATIONS FOR ADDITIONAL INFORMATION.
- MOTORIZED SWITCH OPERATED ELECTRIC BLACKOUT ROLLER SHADES W/ ALUMINUM SIDE AND BOTTOM CHANNELS. SELECTED SHADE FABRIC SHALL HAVE 0% OPENNESS FACTOR. SEE SPECIFICATIONS AND ELECTRICAL DWG'S. FOR ADDITIONAL INFORMATION.
- POSSIBLE LOCATION OF CEILING TILES TO BE REMOVED AND REINSTALLED AS REQUIRED TO RUN ANY NEW CIRCUITS TO ELECTRICAL ROOM. COORDINATE WITH ELECTRICAL DRAWINGS.
- NO WORK THIS SPACE.
- PROVIDE PROPER CURTAIN TRACK FOR VA FURNISHED CURTAINS, SEE SPECIFICATIONS FOR ADDITIONAL INFORMATION. COORDINATE WITH VA APPROVED CURTAINS.
- EXISTING SPRINKLER PRESSURE TEST LOCATION.

GENERAL CEILING PLAN NOTES

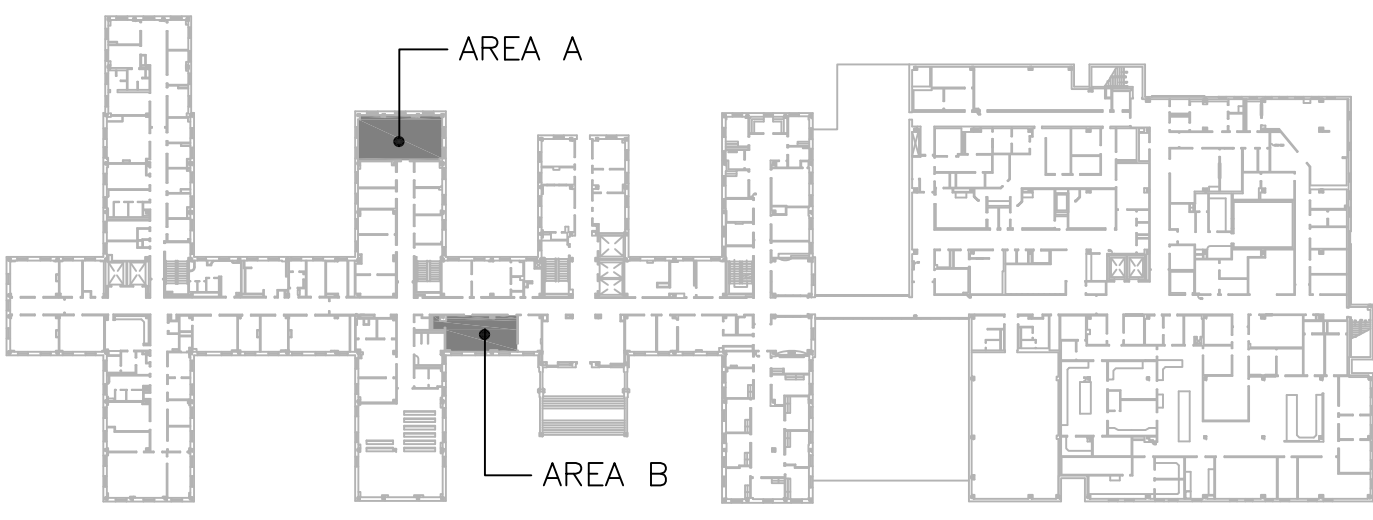
- ALL NEW ACT FINISH CEILING HEIGHTS SHALL MATCH EXISTING REMOVED. G.C. SHALL FIELD VERIFY EXISTING CEILING HEIGHTS IN ALL SPACES PRIOR TO DEMOLITION.
- WHERE CEILING TILES ARE LESS THAN 6" G.C. SHALL UTILIZE CUT 2X4 TILES TO AVOID SLIVERS.
- SEE ELECTRICAL DWG'S. FOR LIGHT SWITCH LOCATIONS AND CIRCUITRY.
- G.C. SHALL MODIFY AND INSTALL ALL SPRINKLER HEADS CENTERED IN NEW TILE LOCATIONS.

GENERAL INFECTION CONTROL NOTES:

- ALL WORK TO BE DONE IS IN A MEDICAL FACILITY REQUIRING A HIGH LEVEL OF INFECTION CONTROL PROCEDURES. THE VA INFECTION CONTROL STAFF SHALL MEET WITH THE SELECTED G.C. TO DISCUSS AND VERIFY THE EXACT INFECTION CONTROL RISK ASSESSMENT TO BE USED WHICH INCLUDES CONSTRUCTION PROJECT TYPE, PATIENT RISK GROUP AND THE CLASS OF PRECAUTIONS.
- G.C. SHALL PROVIDE FULLY SEALED ENTRANCES TO EACH SPACE BEING RENOVATED. PROVIDE STICKY MATS ON BOTH SIDES OF ENTRY DOORS. (CHANGE REGULARLY TO PREVENT TRANSFER OF DUST AND DEBRIS TO ADJACENT SPACES).
- ALL DEBRIS SHALL BE COVERED WHEN BEING REMOVED FROM RENOVATED SPACES AND TRANSPORTED TO THE DUMPSTER.
- ALL SUPPLY/RETURN EXHAUST/RADIATOR GRILLES SHALL BE COVERED TO PREVENT TRANSFER OF DUST TO OTHER SPACES OR DAMAGE TO EQUIPMENT.
- PROVIDE NEGATIVE AIR IN EACH RENOVATED SPACE.
- THESE ARE JUST MINIMUM INFECTION CONTROL REQUIREMENTS AND SHALL BE UPDATED USING THE INFECTION CONTROL RISK ASSESSMENT MATRIX OF PRECAUTIONS FOR CONSTRUCTION AND RENOVATIONS BY THE VA TO PINPOINT THE EXACT INFECTION CONTROL MEASURES NEEDED FOR THIS PROJECT.

NOTE: ANY CEILING TILES AND WORK REQUIRED TO BE ACCOMPLISHED IN EGRESS CORRIDORS SHALL BE COORDINATED WITH THE VA AND DONE AFTER NORMAL HOURS. G.C. SHALL REINSTALL CEILING TILES PRIOR TO NEXT DAY NORMAL BUSINESS HOURS TO PUT CEILING BACK TO ORIGINAL CONDITION. COORDINATE NORMAL BUSINESS HOURS WITH THE VA COR. ANY DAMAGE CAUSED BY REMOVAL AND REINSTALLATION OF TILES WILL BE THE RESPONSIBILITY OF THE G.C.

NOTE: G.C. SHALL CAREFULLY REMOVE ANY CEILING TILES AND REINSTALL AS REQUIRED TO RUN ANY NEW CONDUIT, PIPING, ETC. TO EXISTING ELECTRICAL CLOSETS. G.C. SHALL REPLACE ANY DAMAGED TILES WITH NEW TILES TO MATCH EXISTING EXACTLY. SEE ELECTRICAL DWG'S. FOR ADDITIONAL INFORMATION.



BUILDING 1 KEYPLAN
NOT TO SCALE BUILDING: #1

Revisions: Date	CONSULTANTS: DATE COLLABORATIVE MECHANICAL ELECTRICAL ENGINEERS VIRGINIA BEACH, VA - 757-499-7223		ARCHITECT: INNOVATE Architecture • Interiors 441 WASHINGTON STREET PORTSMOUTH, VA 23704 (P) 757.393.9900 (F) 757.393.9907	Drawing Title FIRST FLOOR PLAN AREA A AND B - NEW WORK CEILING PLAN, NOTES AND LEGEND	Project Title CONSTRUCTION OF NEW ELT OFFICES AND CONFERENCE ROOM	Project Number 565-11-131	Office of Construction and Facilities Management Department of Veterans Affairs
				Approved Project Director	Location FAYETTEVILLE, NORTH CAROLINA	Drawing Number AS102 Dwg. 6 of 13	
				Date 03 - 14 - 12	Checked PG	Drawn DM	

A

B

C

D

E

F

A

B

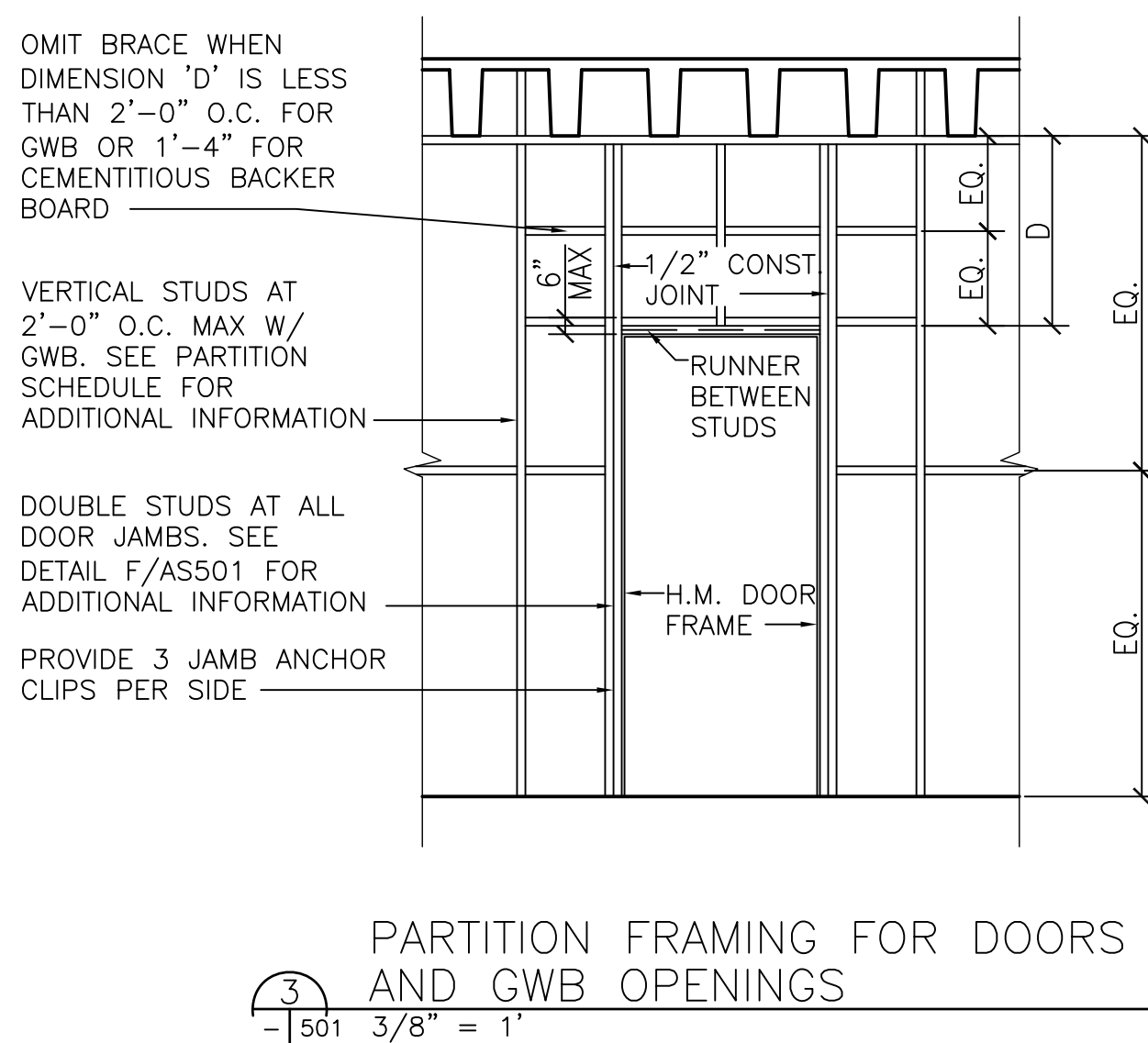
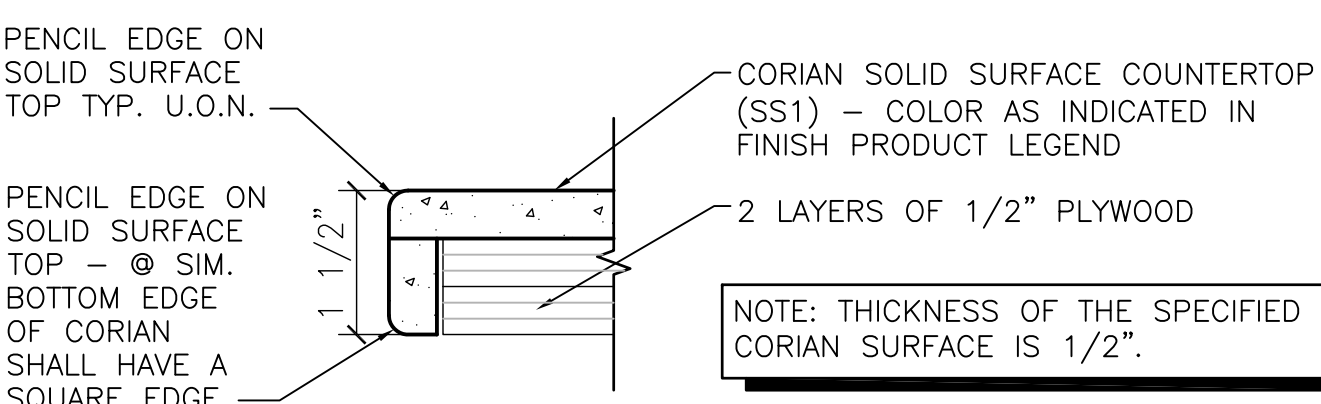
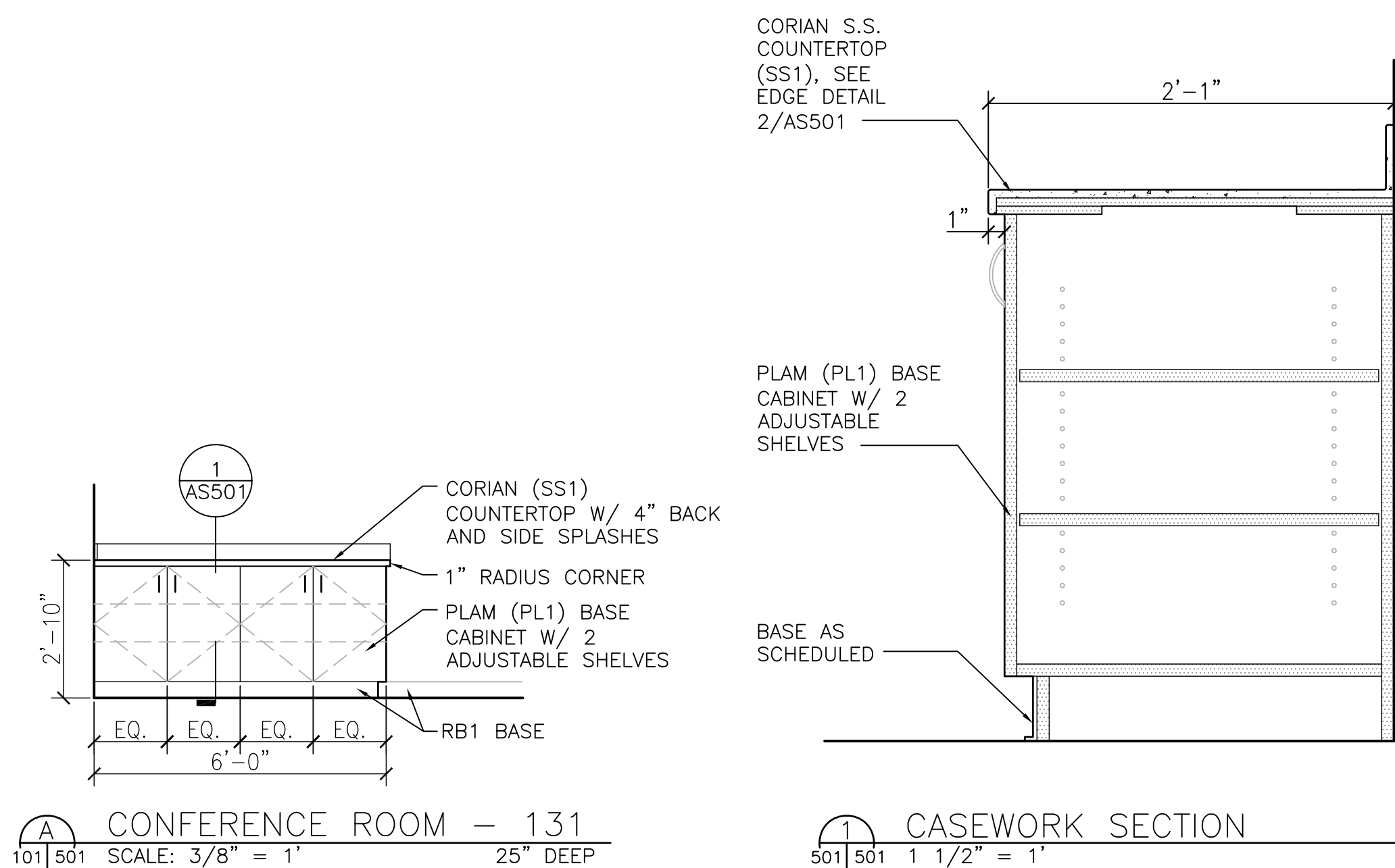
C

D

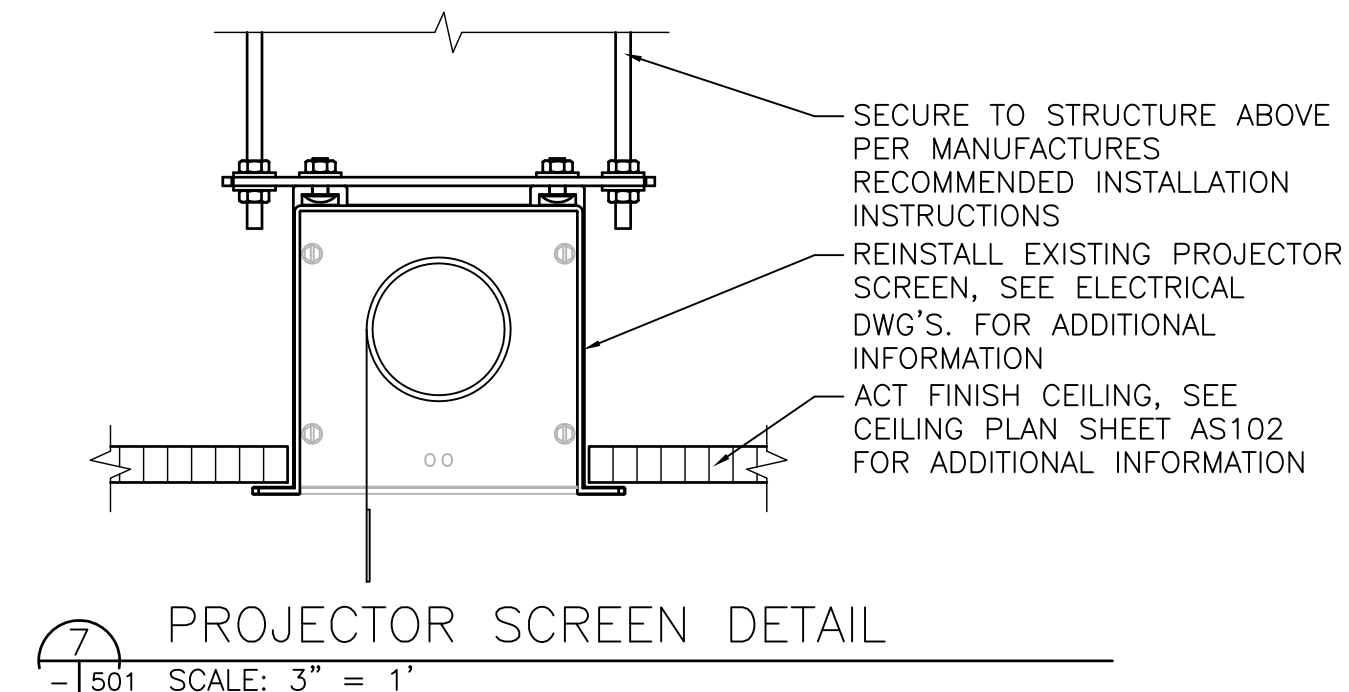
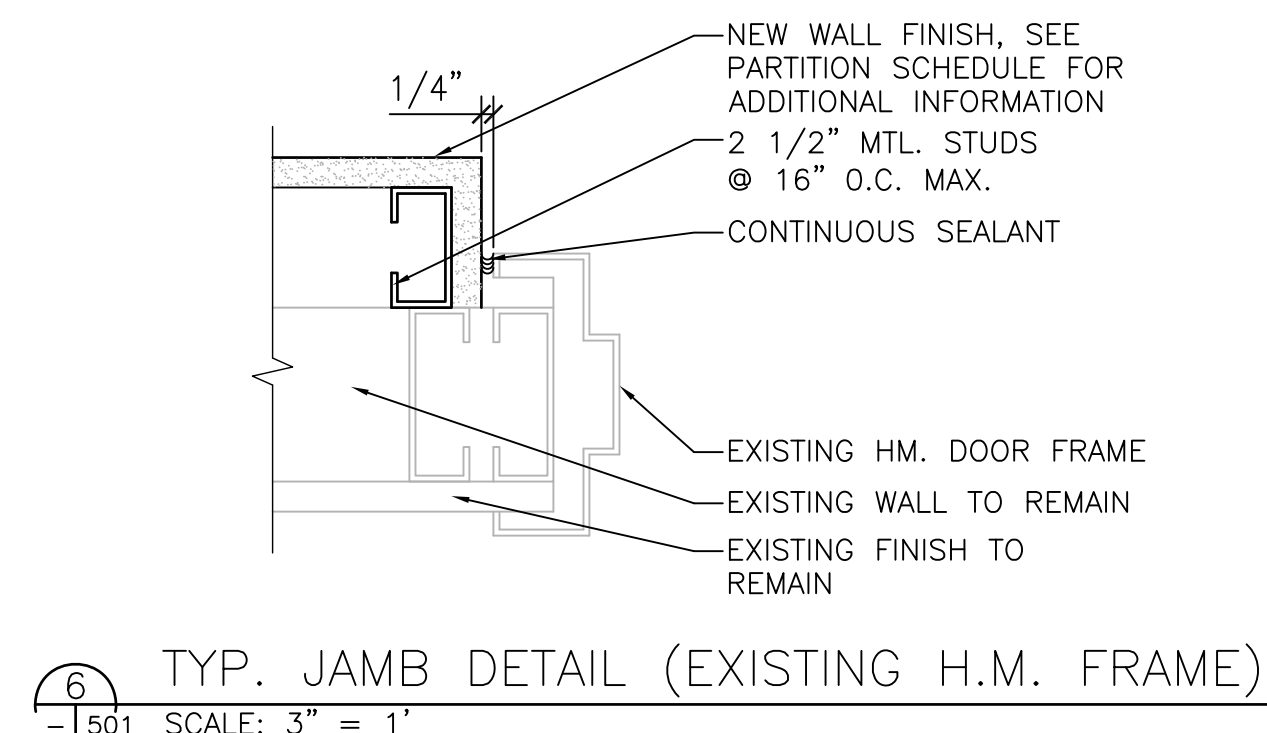
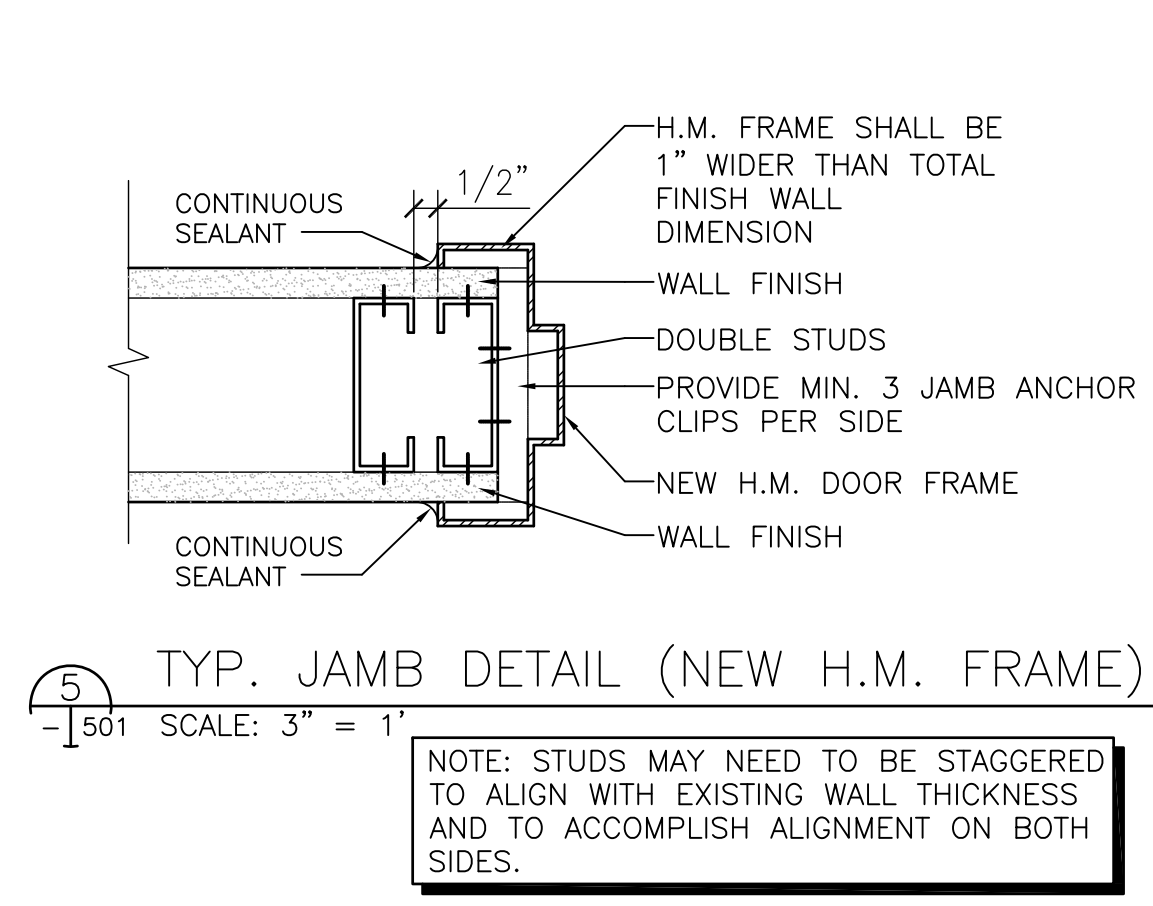
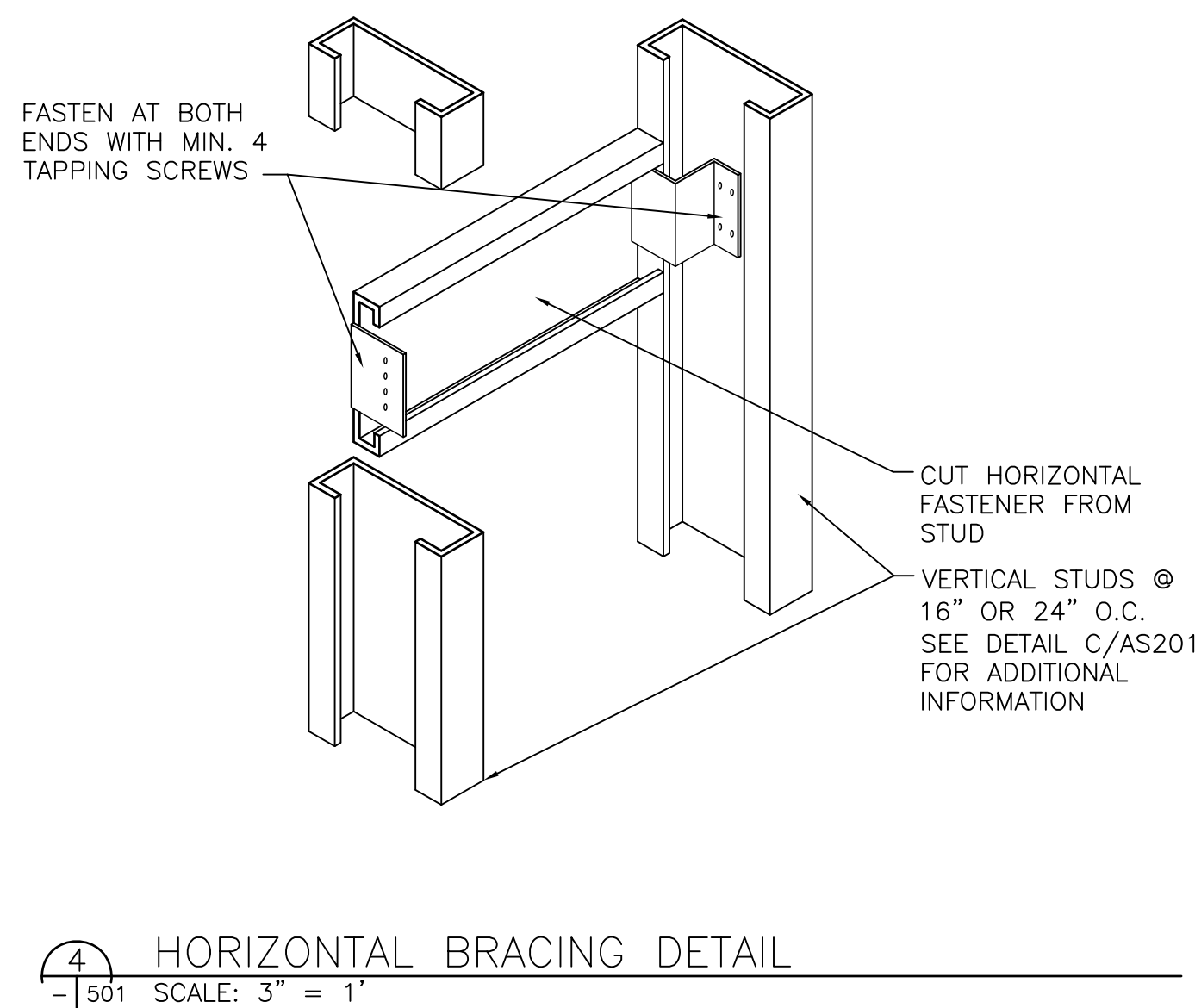
E

F

three inches = one foot
one and one half inches = one foot
one inch = one foot
one inch = one foot
three quarters inch = one foot
one half inch = one foot
three eighths inch = one foot
one quarter inch = one foot
one eighth inch = one foot



G.C. SHALL COORDINATE WIDTH OF EXISTING CLAY BRICK, CONCRETE OR CMU WALL TO BE REMOVED TO ALLOW FOR NEW DOUBLE STUDS TO STRUCTURE ABOVE AND NEW HEADER AS SHOWN ON DETAIL. HEIGHT OF EXISTING CLAY BRICK, CONCRETE OR CMU WALL TO BE REMOVED SHALL BE TO STRUCTURAL SLAB ABOVE.



Revisions	Date	CONSULTANTS: MECHANICAL ELECTRICAL ENGINEERS VIRGINIA BEACH, VA - 757-499-7223		ARCHITECT: 441 WASHINGTON STREET PORTSMOUTH, VA 23704 (P) 757.393.9900 (F) 757.393.9907	Drawing Title CASEWORK ELEVATION, CASEWORK SECTION AND DETAILS	Project Title CONSTRUCTION OF NEW ELT OFFICES AND CONFERENCE ROOM	Project Number 565-11-131	Office of Construction and Facilities Management 	
					Approved Project Director	Location FAYETTEVILLE, NORTH CAROLINA	Building Number 1		Drawing Number AS501
						Date 03 - 14 - 12	Checked PG	Drawn DM	Dwg. 7 of 13