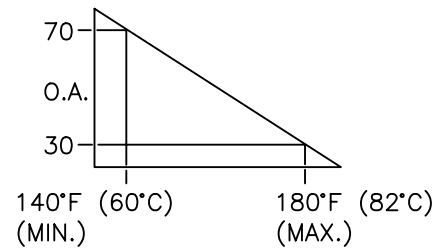


SEQUENCE OF OPERATION:

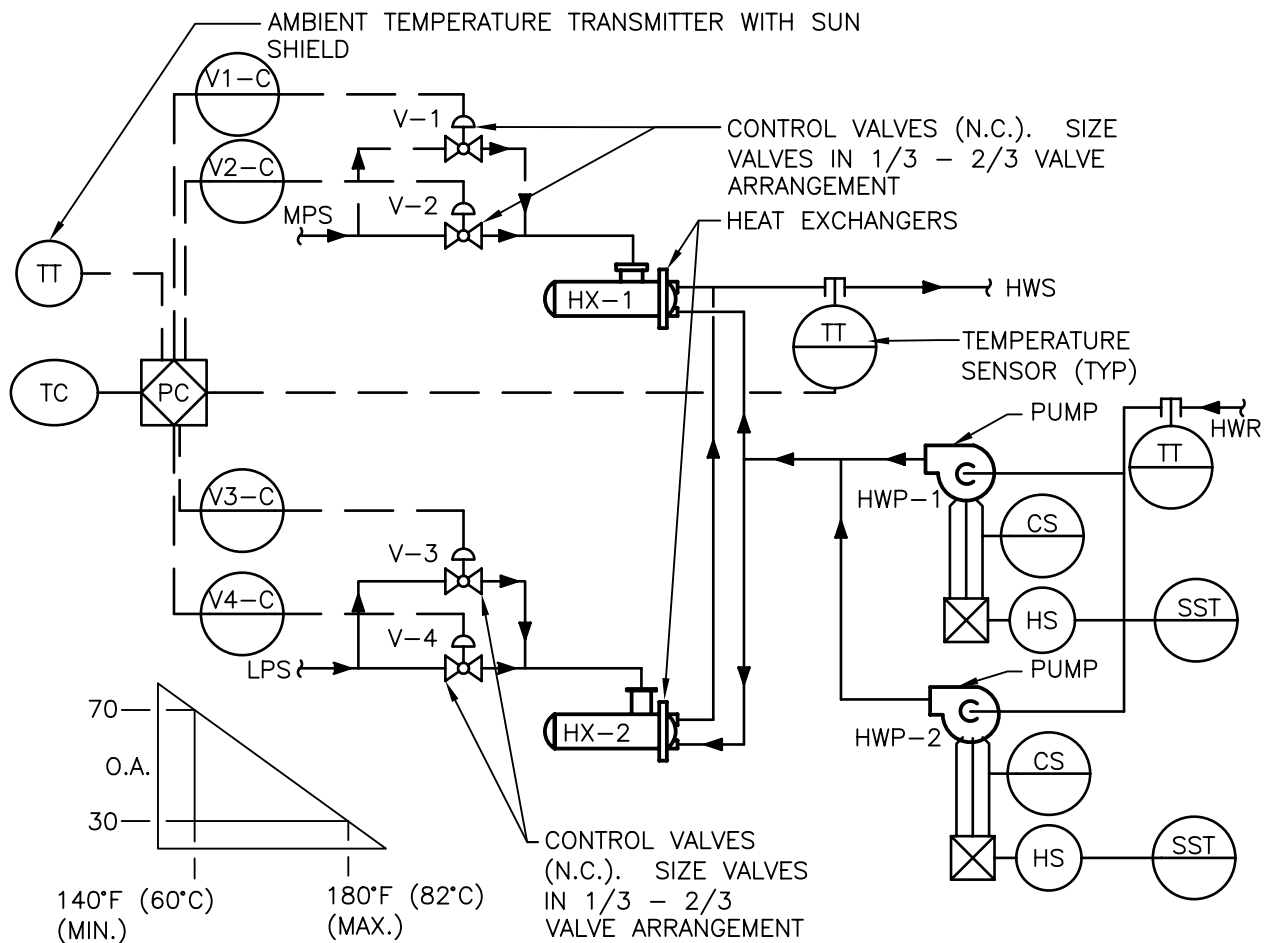
1. STEAM CONTROL VALVE SHALL MODULATE TO MAINTAIN THE LEAVING HOT WATER TEMPERATURE AT SET POINT.
2. THE LEAVING HOT WATER TEMPERATURE SHALL BE RESET INVERSELY WITH THE OUTDOOR TEMPERATURE AS SCHEDULED.
3. THE LEAD AND LAG PUMPS AND HEAT EXCHANGERS SHALL BE SEQUENTIAL BY THE OPERATOR CONTROLS AT THE PRE-DETERMINED INTERVAL (USUALLY 7 DAYS). IN THE EVENT THE PUMP FAILS TO START WITHIN 30 SECONDS, AN ALARM SHALL BE INITIATED AND THE SECOND PUMP SHALL START AUTOMATICALLY.



TYP OSA RESET
SCHEDULE

VALVE SEQUENCE:

1. V1 (1/3 CAPACITY) MODULATING FULLY OPEN TO MAINTAIN SET POINT
2. V2 (2/3 CAPACITY) MODULATE FULLY OPEN TO MAINTAIN SET POINT.
3. BOTH V1 & V2 MODULATE TOGETHER TO MAINTAIN SET POINT.



DUAL HEAT EXCHANGER CONTROLS (HEATING SYSTEM)

#

NTS



Department of
Veterans Affairs

DETAIL TITLE / DUAL HEAT EXCHANGER CONTROLS (HEATING SYSTEM)

SCALE :NONE

DATE ISSUED :DECEMBER 2008

CADD DETAIL NO. : SD232113-10.DWG