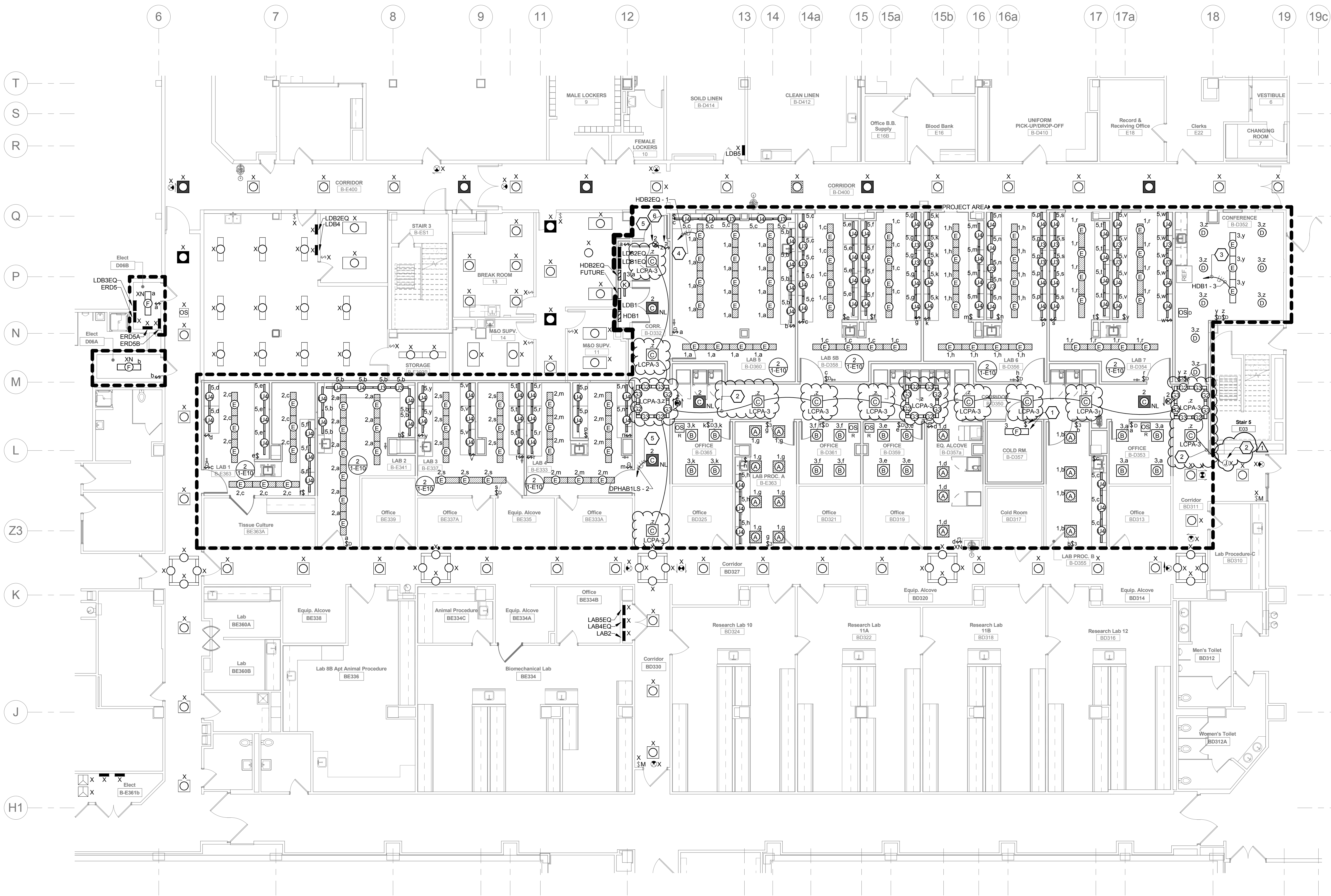


three inches = one foot
one and one half inches = one foot
one inch = one foot
three quarters inch = one foot
one half inch = one foot
three eighths inch = one foot
one quarter inch = one foot
one eighth inch = one foot



PARTIAL BASEMENT LIGHTING PLAN 1
1/8" = 1'-0"
0' 4' 8' 16' 32'

- ### LIGHTING GENERAL NOTES
1. REFER TO ARCHITECTURAL REFLECTED CEILING PLAN FOR FINAL LOCATION OF ALL NEW CEILING MOUNTED LIGHTING FIXTURES. CLOSELY COORDINATE LOCATION OF LIGHTING FIXTURES AND SMOKE DETECTORS WITH HVAC DUCTS, DIFFUSERS, SPRINKLERS, PLUMBING, ETC. AND ADJUST LOCATIONS OF SELECTED ELECTRICAL EQUIPMENT IN ACCORDANCE WITH ENGINEER'S INSTRUCTIONS.
 2. REFER TO THE ARCHITECTURAL PLANS FOR EQUIPMENT LAYOUT. CLOSELY COORDINATE THE EXACT LOCATION OF ALL OUTLETS AND DEVICES WITH ARCHITECTURAL ELEVATIONS. ADJUST LOCATIONS AND MOUNTING HEIGHTS WHERE NECESSARY TO PREVENT INTERFERENCE WITH FURNITURE, FIXED CASEWORK, EQUIPMENT, ETC. VERIFY ALL CHANGES PRIOR TO ROUGH-IN.
 3. REFER TO ELECTRICAL DETAILS PLANS FOR OCCUPANCY SENSOR WIRING DIAGRAMS AND PROGRAM SCHEDULE FOR ADDITIONAL INFORMATION.
 4. A DEDICATED NEUTRAL SHALL BE PROVIDED FOR EACH AND EVERY 120V AND 277V BRANCH CIRCUIT. MULTIWIRE BRANCH CIRCUITS WITH SHARED NEUTRALS ARE NOT PERMITTED.
 5. NO MORE THAN (3) SINGLE-PHASE BRANCH CIRCUITS SHALL BE INSTALLED IN ANY ONE CONDUIT. DIFFERENT POWER SYSTEMS (NORMAL, CRITICAL, LIFE SAFETY) SHALL NOT BE INSTALLED IN THE SAME CONDUIT.

- ### CODED NOTES:
1. PROVIDE LIGHTING FIXTURE AND WALL SWITCH ABOVE THE FINISHED CEILING AT THE COLD ROOM. MOUNT THE LIGHT FIXTURE SUSPENDED WITH CHAIN MOUNT IN BEST LOCATION TO ILLUMINATE EQUIPMENT FOR SERVICING BY MAINTENANCE PERSONNEL. PENDANT MOUNT WALL SWITCH FROM STRUCTURE NEAR LOCATION WHERE MAINTENANCE PERSONNEL WILL ACCESS ABOVE CEILING AREA.
 2. CONNECT CORRIDOR AND COVE LIGHTING TO EXISTING JUNCTION BOX LOCATED IN CORRIDOR B-0311 CONTAINING SWITCHED LIGHTING CIRCUIT FROM EXISTING LIGHTING CONTROL PANEL LCPA PROVIDED UNDER PREVIOUS PROJECT (RESEARCH SOUTH). EXTEND EXISTING SWITCHED LIGHTING CIRCUIT FROM JUNCTION BOX (OR NEAREST LIGHTING FIXTURE IF JUNCTION BOX CANNOT BE LOCATED) TO NEW RESEARCH SOUTH AREA LIGHTING FIXTURES AS INDICATED VIA 3/4" EMT CONDUIT - 2#12 AND 1#12EG.
 3. CONNECT ALL NORMAL LIGHTING FIXTURES COMPLETE TO PANEL HDB1 CIRCUIT INDICATED AND TO LOCAL LIGHTING CONTROLS (SWITCHES AND/OR OCCUPANCY SENSORS) VIA 3/4" EMT CONDUIT - 2#12 & 1#12EG.
 4. CONNECT ALL CRITICAL LIGHTING FIXTURES COMPLETE TO PANEL HDB2EQ CIRCUIT INDICATED AND TO LOCAL LIGHTING CONTROLS (SWITCHES AND/OR OCCUPANCY SENSORS) VIA 3/4" EMT CONDUIT - 2#12 & 1#12EG.
 5. CONNECT ALL LIFE SAFETY LIGHTING FIXTURES AND EXIT SIGNS COMPLETE TO PANEL DPHAB1LS CIRCUIT 2 VIA 3/4" EMT CONDUIT - 2#12 & 1#12EG.
 6. PROVIDE LOW VOLTAGE MOMENTARY WALL SWITCH WITH (1) LOW VOLTAGE CABLE DAISY CHAINED BETWEEN OTHER MOMENTARY WALL SWITCHES ON SAME CONTROL CIRCUIT AND CONNECT TO EXISTING CORRIDOR LIGHTING CONTROL PANEL LCPA IN ROOM B-E361b. INSTALL IN 3/4" MINIMUM CONDUIT.

FOR CONSTRUCTION

CONSULTANTS:

ARCHITECT/ENGINEERS:

Drawing Title
PARTIAL BASEMENT LIGHTING PLAN

Project Title
VAMC WADE PARK
CLEVELAND RENOVATE
RESEARCH NORTH

Project Number
541-13-104

Building Number
1

Drawing Number

1-E5

Office of
Construction
and Facilities
Management

Department of
Veterans Affairs

ADDENDUM 02
03/03/17
FINAL SUBMISSION
07/05/16
Revisions:
Date



Approved: Project Director

Date
07/05/16

Checked By
MPL

Drawn By
TWM