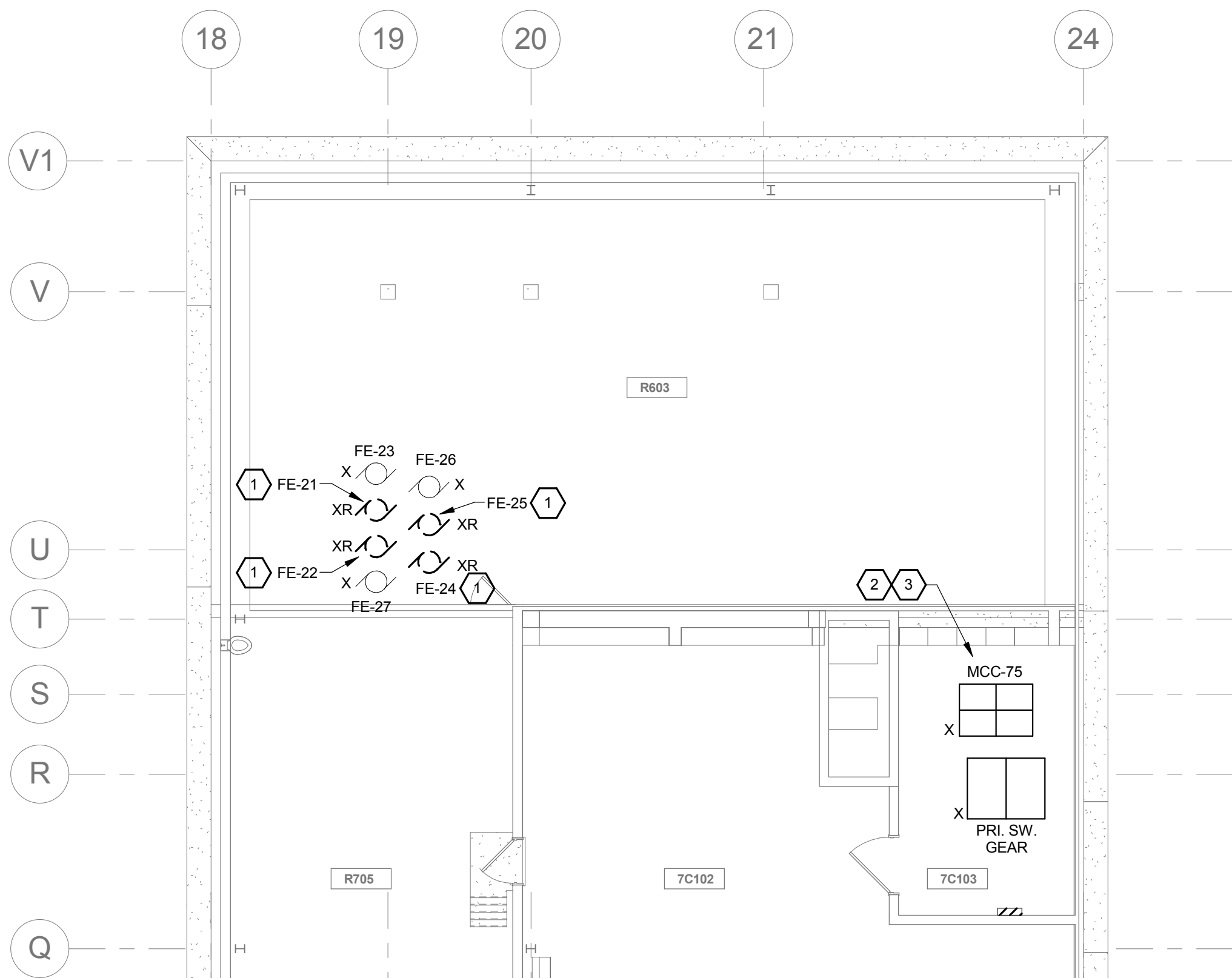
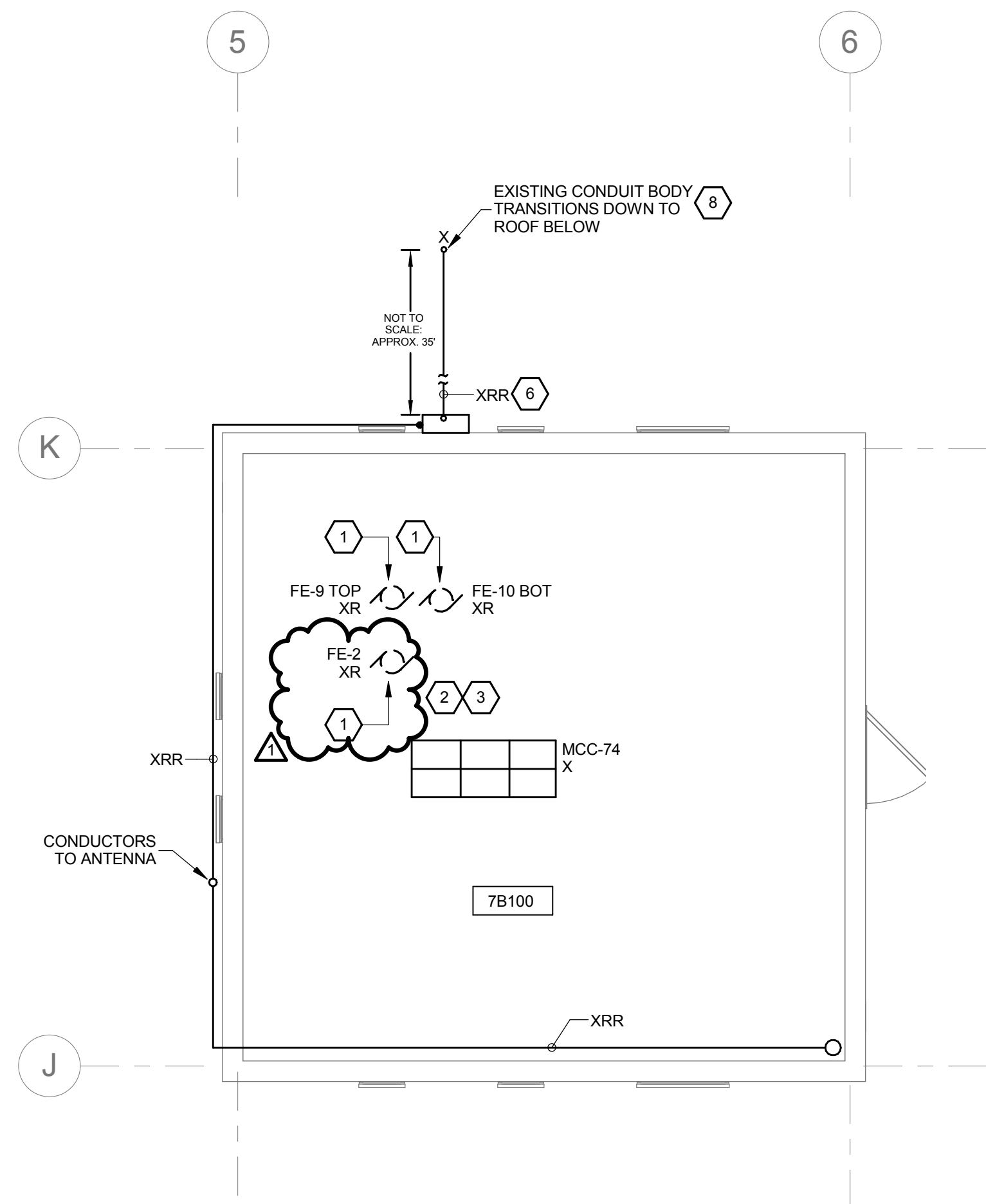


three inches = one foot
one and one half inches = one foot
one inch = one foot
three quarters inch = one foot
one half inch = one foot
three eighths inch = one foot
one quarter inch = one foot
one eighth inch = one foot



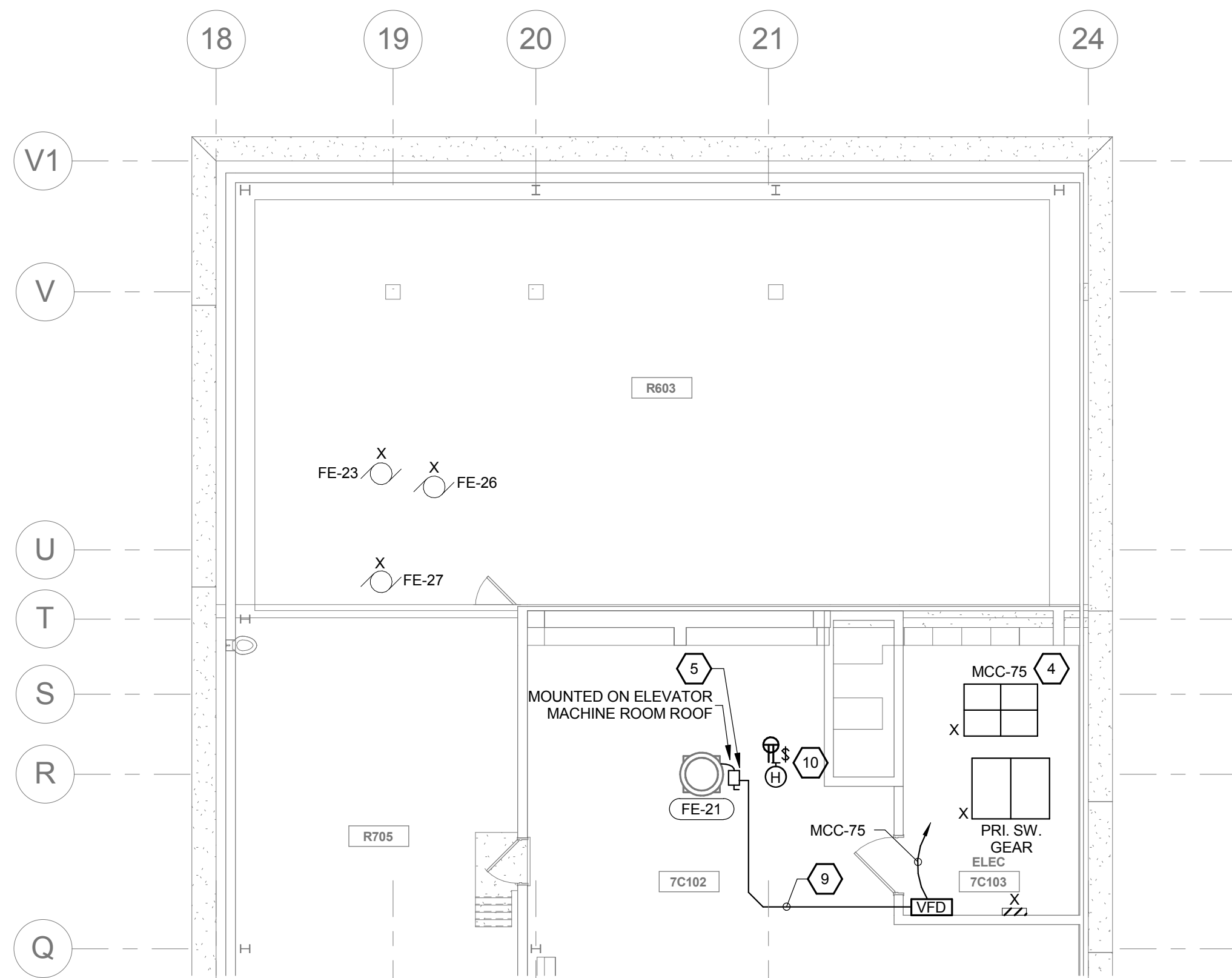
PARTIAL SIXTH FLOOR ROOF ELECTRICAL
DEMOLITION PLAN

1/8" = 1'-0"



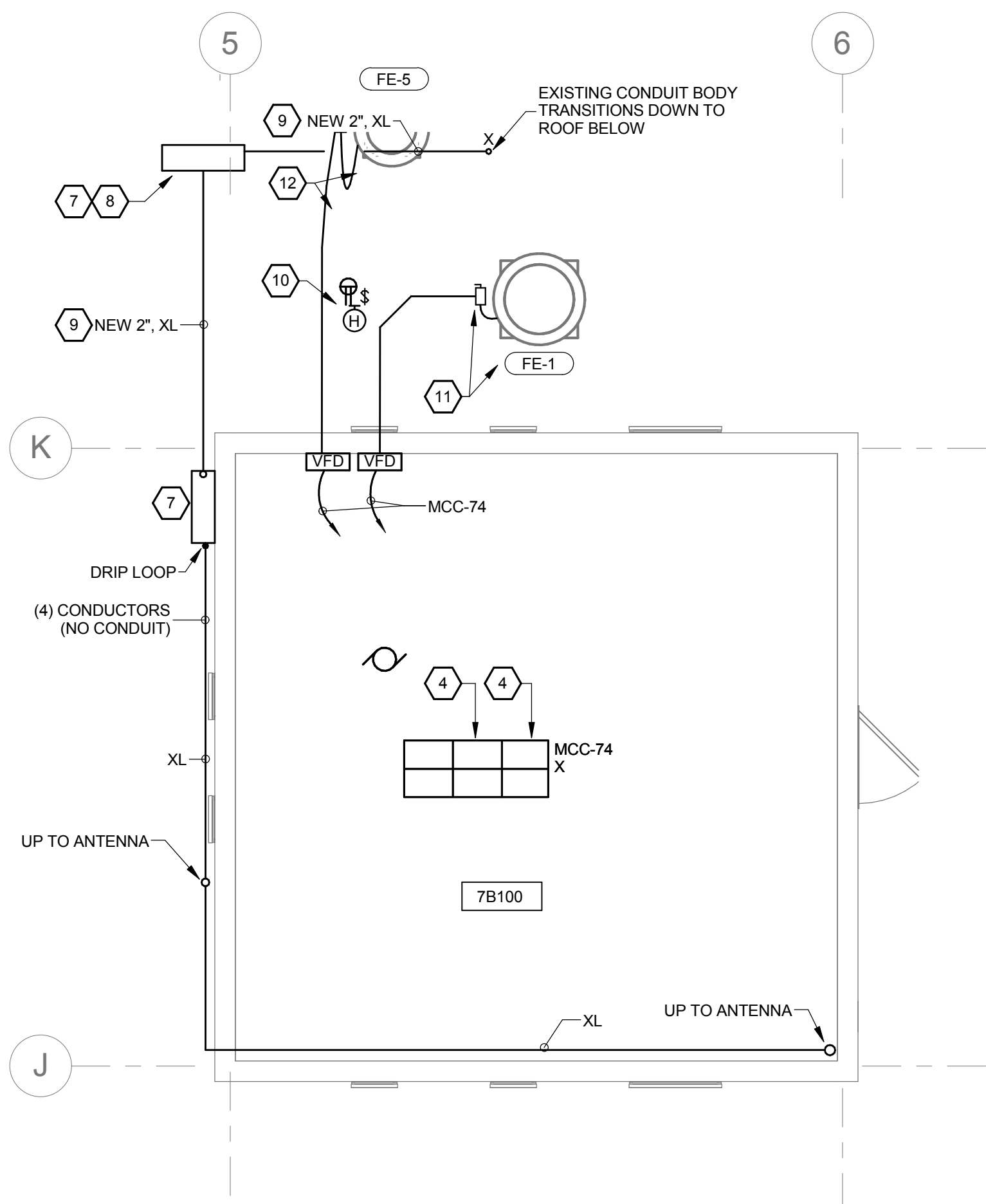
PARTIAL SIXTH FLOOR ROOF 7B100 PENTHOUSE
ELECTRICAL DEMOLITION PLAN

1/4" = 1'-0"



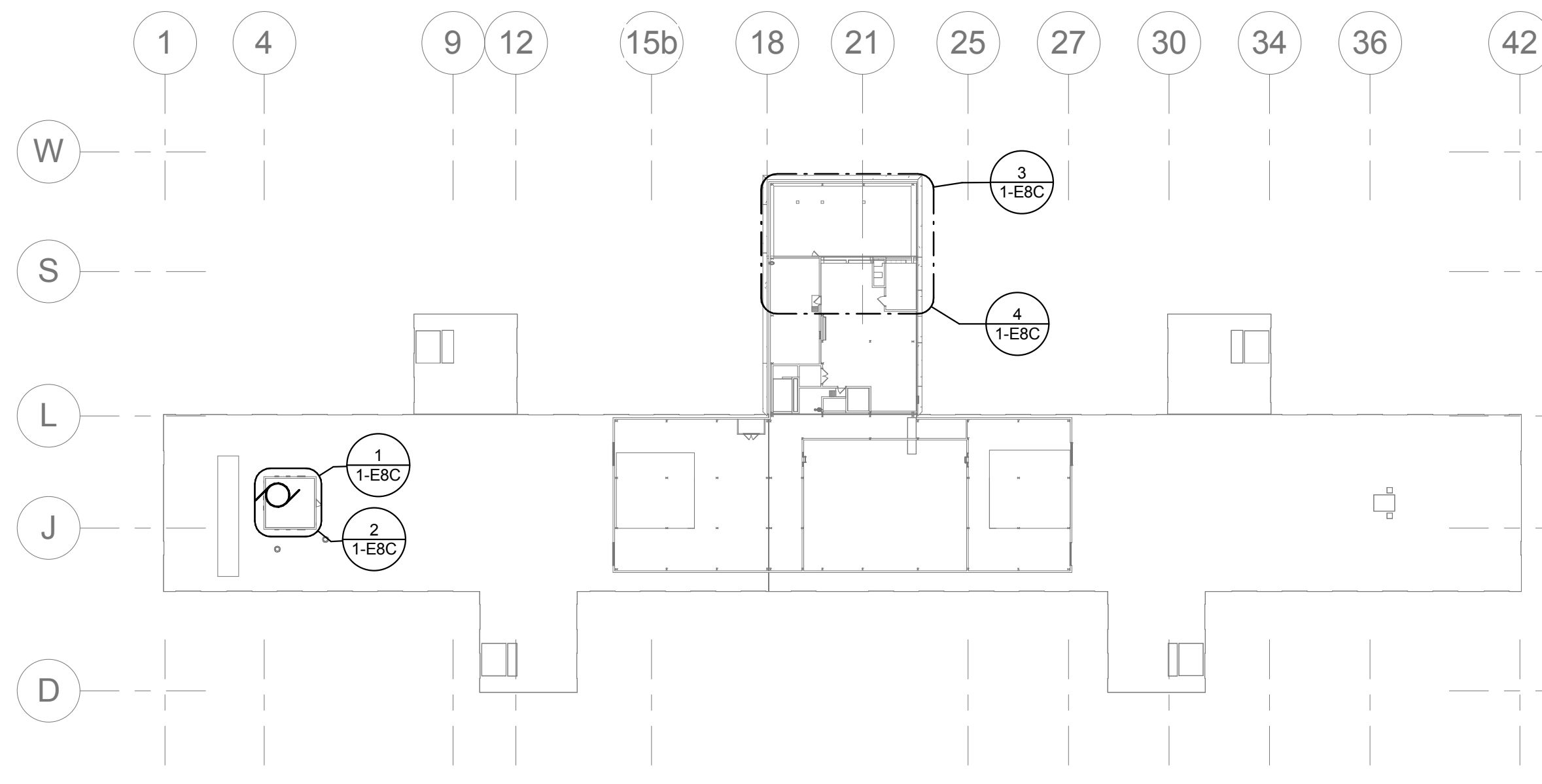
PARTIAL SIXTH FLOOR ROOF MECHANICAL
CONNECTIONS PLAN

1/8" = 1'-0"



PARTIAL SIXTH FLOOR ROOF 7B100 PENTHOUSE
MECHANICAL CONNECTIONS PLAN

1/4" = 1'-0"



OVERALL SIXTH FLOOR ROOF KEY PLAN

1" = 50'-0"

- MECHANICAL CONNECTIONS GENERAL NOTES**
- MC1 MECHANICAL EQUIPMENT SHALL BE CONNECTED COMPLETE PER MANUFACTURER'S WIRING DIAGRAMS AND DETAILS UNLESS OTHERWISE NOTED ON DRAWINGS.
- MC2 CONTRACTOR SHALL CONCEAL CONDUIT AND WIRING IN WALLS AND ABOVE CEILING AND PROVIDE LIQUID-TIGHT FLEXIBLE METAL CONDUIT FOR FINAL CONNECTION TO MECHANICAL EQUIPMENT. PROVIDE RIGID ALUMINUM CONDUITS AT EXTERIOR LOCATIONS. SEAL ALL ROOF PENETRATION WATER-TIGHT AND ALL WALL PENETRATIONS TO MAINTAIN FIRE RATING.
- MC3 CONTRACTOR SHALL PROVIDE ALL LOCAL DISCONNECTING MEANS FOR ALL MECHANICAL EQUIPMENT, UNLESS EQUIPMENT IS NOTED TO BE FURNISHED WITH INTEGRAL DISCONNECTS. LABEL ALL DISCONNECT SWITCHES TO INDICATE POWER SOURCE AND EQUIPMENT SERVED.
- MC4 COORDINATE EXACT INSTALLATION LOCATION OF ALL MECHANICAL EQUIPMENT WITH MECHANICAL PLANS PRIOR TO ROUGH-IN.
- MC5 CONDUITS SHALL BE RIGID ALUMINUM AT EXTERIOR LOCATIONS.
- MC6 SHARED NEUTRALS ARE NOT PERMITTED FOR BRANCH CIRCUITS.
- MC7 CONTRACTOR SHALL INSTALL CONCRETE HOUSEKEEPING PAD FOR ALL ELECTRICAL EQUIPMENT MOUNTED ON FLOOR IN ELECTRICAL ROOMS (TRANSFORMERS, SWITCHBOARDS, TRANSFER SWITCHES, UPS EQUIPMENT, MOTOR CONTROL CENTERS, ETC.). REFER TO TYPICAL HOUSEKEEPING PAD DETAIL ON SUBSEQUENT DRAWINGS FOR ADDITIONAL REQUIREMENTS.
- MC8 CONTRACTOR IS RESPONSIBLE FOR RIGGING METHOD TO RAISE/LOWER ALL EQUIPMENT PROVIDED, COORDINATE EQUIPMENT ENTRY LOCATION WITH OWNER.
- MC9 SEAL ALL ROOF PENETRATIONS WATER TIGHT AND TO MAINTAIN ROOF FIRE RATINGS.
- MC10 ALL STARTERS (MANUAL AND COMBINATION) AND/OR VARIABLE FREQUENCY DRIVES (VFDs) SHALL BE INSTALLED IN APPROXIMATE LOCATIONS AS INDICATED ON PLANS. ADJUST LOCATIONS OF STARTERS AS NECESSARY TO AVOID INTERFERENCE FROM MECHANICAL EQUIPMENT, PIPING AND DUCTWORK. STARTERS MUST BE ACCESSIBLE. BANK ALL STARTERS TOGETHER AT SAME LOCATION, UNLESS OTHERWISE SHOWN ON PLANS. PROVIDE PHENOLIC LABEL FOR EACH STARTER INDICATING POWER SOURCE, LOAD SERVED AND ITS LOCATION.

- CODED NOTES**
- 1 DISCONNECT POWER TO EXISTING EXHAUST FAN TO BE REMOVED. REMOVE ASSOCIATED CONDUIT, WIRING, DISCONNECT SWITCH, ETC. COMPLETE BACK TO SOURCE.
- 2 DISCONNECT POWER FOR REMOVED EXHAUST FANS AND LABEL MCC CUBICLES AS SPARE. BREAKER, STARTER, CONTROL TRANSFORMER, ETC. SHALL REMAIN.
- 3 REUSE TWO SPARE CUBICLES TO SUPPLY NEW FANS. REMOVE BREAKER, STARTER, CONTROL TRANSFORMER, ETC.
- 4 PROVIDE NEW 15A-3P BREAKER AND NEW DOOR IN SPARE CUBICLE TO SUPPLY NEW FAN. PROVIDE NEW NAMEPLATE INDICATING LOAD INFORMATION.
- 5 FUME HOOD EXHAUST (FE-21) - 5HP, 15 MOCP, 480V-3Ø EC SHALL PROVIDE 30A-600V-3P NONFUSED HEAVY DUTY DISCONNECT SWITCH ON STRUT SUPPORT SYSTEM AT UNIT LOCATION. CONNECT FAN COMPLETE TO CIRCUIT INDICATED THROUGH VFD AND DISCONNECT SWITCH VIA 1" C-3#10 AND 1#10EG PER MANUFACTURER'S WIRING DIAGRAMS.
- 6 REROUTE EXISTING 2" CONDUIT AND (4) CABLES ALONG ROOF TO ANTENNAS TO ACCOMMODATE NEW DUCTWORK. COORDINATE WORK WITH OWNER.
- 7 PROVIDE NEW ENCLOSURE (NEMA 3R).
- 8 DISCONNECT CABLES FROM ANTENNAS AND PULLBACK TO CONDUIT BODY AT EDGE OF ROOF TO ACCOMMODATE INSTALLATION OF NEW DUCTWORK. INSTALL NEW CONDUIT DOWN EXISTING CABLING AS INDICATED AND RECONNECT TO ANTENNAS. COORDINATE WORK AND SHUT-DOWNS WITH VA COR AND EQUIPMENT SERVICE PROVIDER. INCLUDES (3) RGR COAXIAL CABLES AND (1) 10-CONDUCTOR CABLE.
- 9 PROVIDE CONDUIT SUPPORTS AT 10'-0" ON CENTER AND WITHIN 3'-0" OF BENDS. NO CONDUIT SHALL BE ROUTED THROUGH ELEVATOR MACHINE ROOM.
- 10 PROVIDE SWITCH AND RECEPTACLE AT 30" ABOVE FINISHED SURFACE. PROVIDE LIGHT FIXTURE 18" ABOVE TOP OF EQUIPMENT. MOUNT ON STRUT CHANNEL SUPPORT SYSTEM AT LOCATION THAT DOES NOT INTERFERE WITH MECHANICAL EQUIPMENT CLEARANCES. SEE ELECTRICAL DETAILS FOR ADDITIONAL INFORMATION.
- 11 FUME HOOD EXHAUST (FE-1) - 5HP, 15 MOCP, 480V-3Ø EC SHALL PROVIDE 30A-600V-3P NONFUSED HEAVY DUTY DISCONNECT SWITCH IN WEATHERPROOF ENCLOSURE (NEMA 3R) MOUNTED ON STRUT SUPPORT SYSTEM AT UNIT LOCATION. CONNECT FAN COMPLETE TO CIRCUIT INDICATED THROUGH VFD AND DISCONNECT SWITCH VIA 1" C-3#10 AND 1#10EG PER MANUFACTURER'S WIRING DIAGRAMS.
- 12 FUME HOOD EXHAUST (FE-5) - 2HP, 15 MOCP, 480V-3Ø EC SHALL PROVIDE 30A-600V-3P NONFUSED HEAVY DUTY DISCONNECT SWITCH IN WEATHERPROOF ENCLOSURE (NEMA 3R) MOUNTED ON STRUT SUPPORT SYSTEM AT UNIT LOCATION. CONNECT FAN COMPLETE TO CIRCUIT INDICATED THROUGH VFD AND DISCONNECT SWITCH VIA 1" C-3#10 AND 1#10EG PER MANUFACTURER'S WIRING DIAGRAMS.

FOR CONSTRUCTION

CONSULTANTS:



ARCHITECT/ENGINEERS:



Drawing Title
PARTIAL ROOF MECHANICAL
CONNECTIONS PLAN

Approved: Project Director

Project Title
VAMC WADE PARK
CLEVELAND RENOVATE
RESEARCH NORTH

Location
10701 EAST BLVD, CLEVELAND, OHIO 44106

Date
07/05/16

Checked By
MPL

Drawn By
TWM

Project Number
541-13-104

Building Number
1

Drawing Number
1-E8C

Office of
Construction
and Facilities
Management

