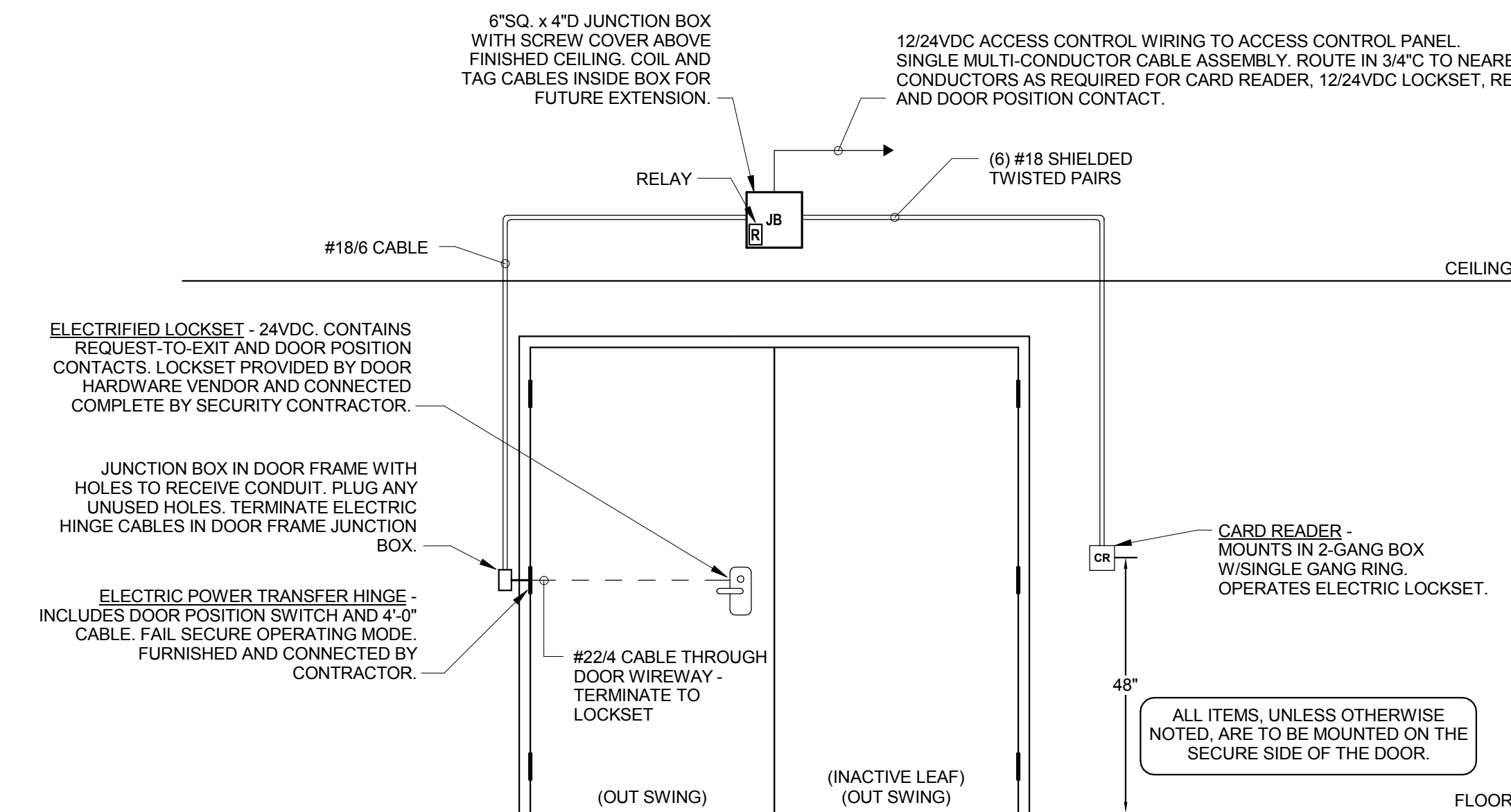
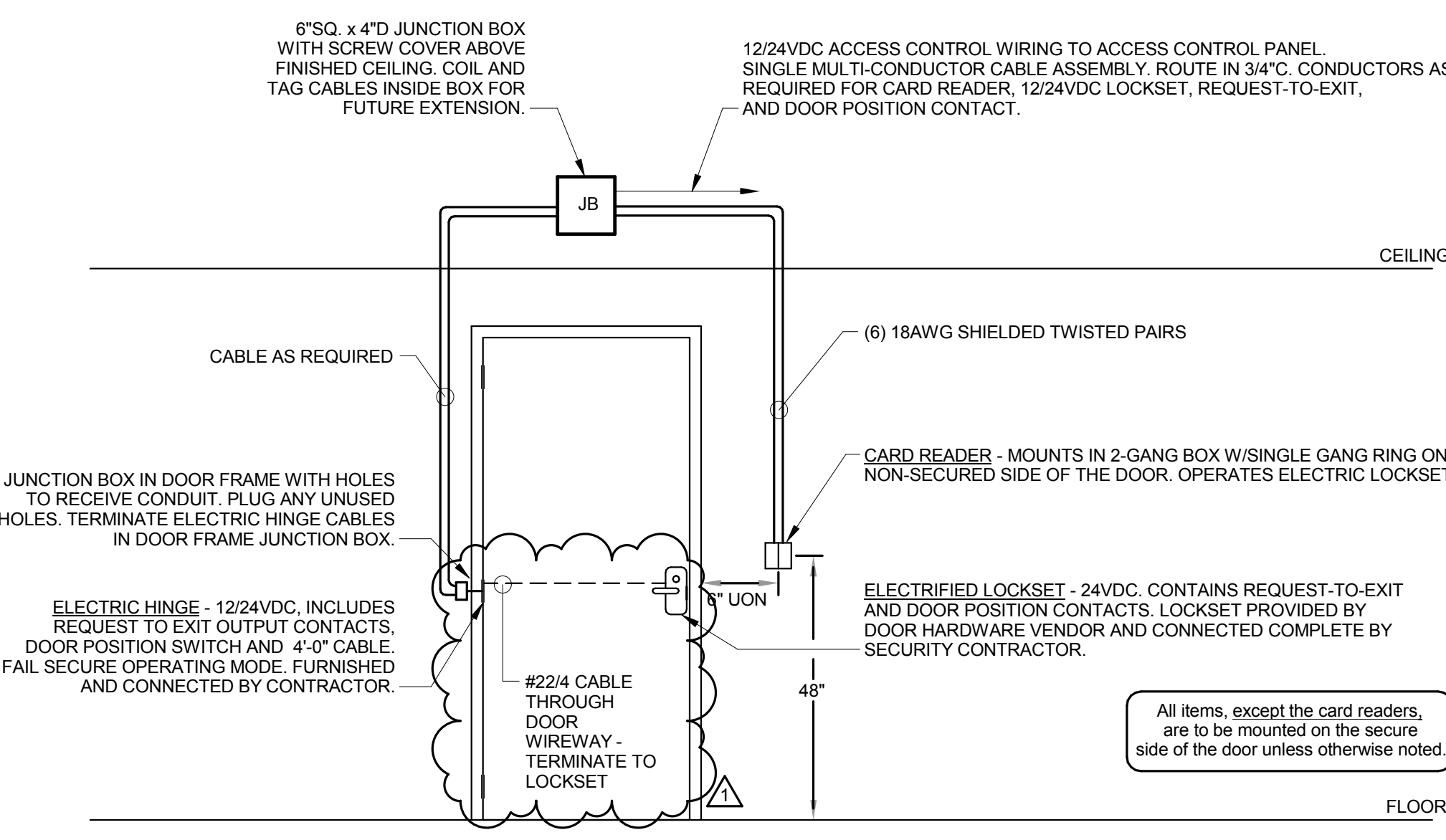


one foot = one foot
three inches = one foot
one and one half inches = one foot
one inch = one foot
three quarters inch = one foot
one half inch = one foot
three eighths inch = one foot
one quarter inch = one foot
one eighth inch = one foot

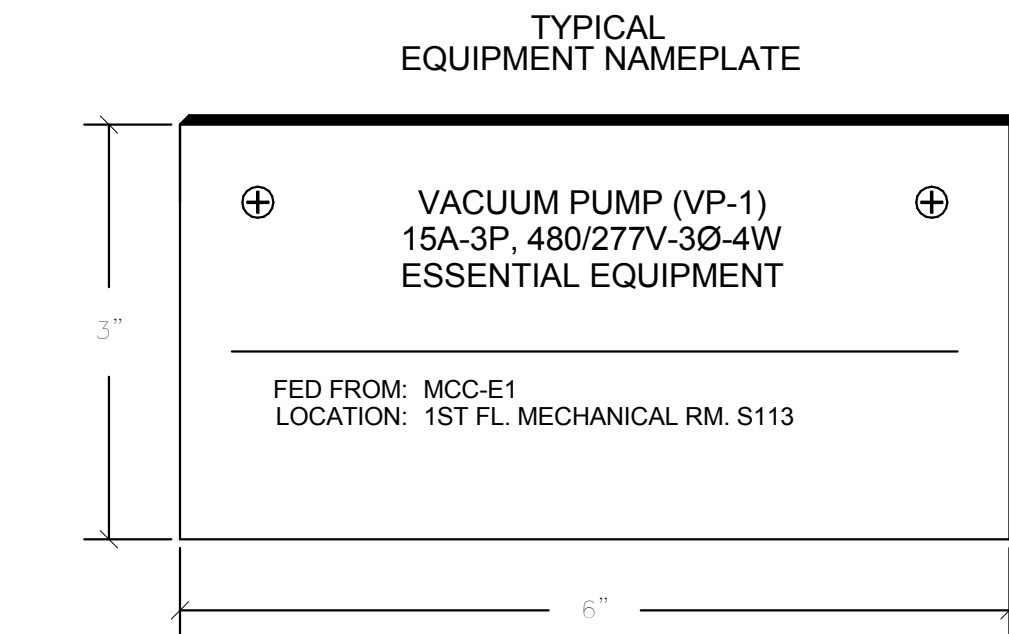


ACCESS CONTROLLED DOOR TYPE 2
NOT TO SCALE

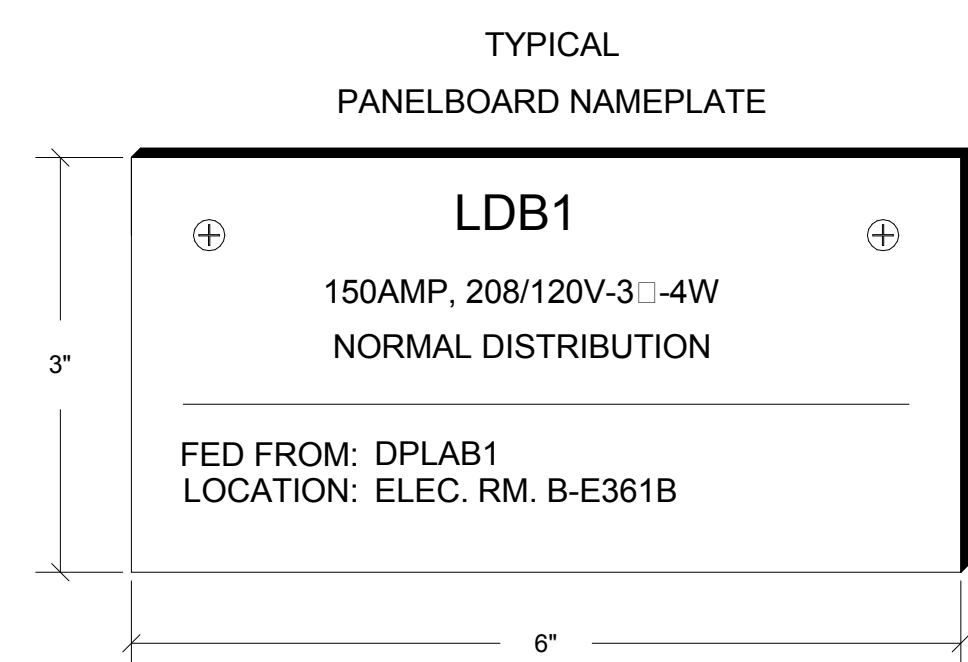
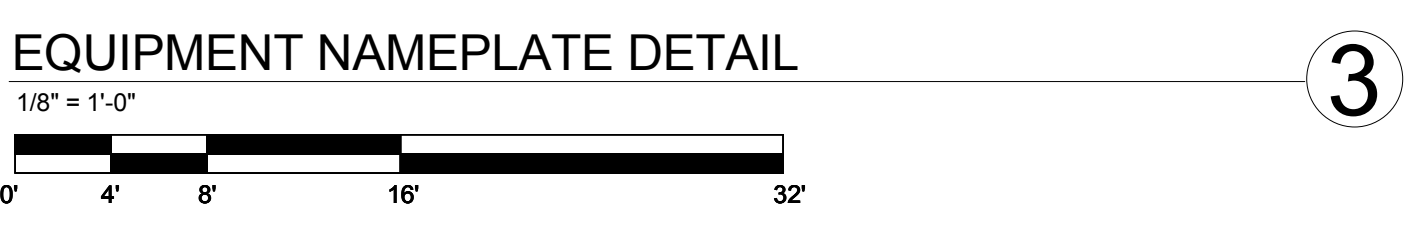


ACCESS CONTROLLED DOOR TYPE 1
NOT TO SCALE

- ACCESS CONTROL DOOR GENERAL NOTES**
1. VERIFY ACCESS CONTROLLED DOOR REQUIREMENTS AND EXACT CABLING REQUIREMENTS WITH SECURITY SYSTEM AND DOOR HARDWARE VENDOR PRIOR TO ROUGH-IN. CABLING INDICATED IS FOR REFERENCE ONLY. CONTRACTOR SHALL PROVIDE SINGLE, PLENUM-RATED COMPOSITE CABLE DESIGNED FOR ACCESS CONTROL SYSTEMS FROM ACCESS CONTROL PANEL TO DOOR LOCATION AND ROUTE CABLING TO INDIVIDUAL DEVICES AS REQUIRED. DO NOT PROVIDE SEPARATE ACCESS CONTROL CABLING FOR EACH DEVICE FROM CONTROL PANEL TO DOOR LOCATIONS.
 2. CONTRACTOR IS RESPONSIBLE FOR ALL ROUGH-INS, DEVICES, AND CABLING NECESSARY FOR A COMPLETE INSTALLATION. COORDINATE REQUIREMENTS FOR ALL DOORS WITH DOOR HARDWARE VENDOR.
 3. CONTRACTOR SHALL REFER TO ARCHITECTURAL PLANS AND DOOR HARDWARE SCHEDULE FOR EXACT QUANTITY AND LOCATION OF ACCESS CONTROL DEVICES. CONTACT ENGINEER SHOULD A DISCREPANCY ARISE BETWEEN ACCESS CONTROL DETAILS AND ARCHITECTURAL DRAWINGS.
 4. ACCESS CONTROLLED DOORS MAY OCCUR IN CURTAIN WALL SYSTEMS. PROVIDE POST MOUNTED PUSH BUTTONS/CARD READERS WHERE NECESSARY. COORDINATE EXACT REQUIREMENTS WITH DOOR HARDWARE VENDOR.
 5. ALL ACCESS CONTROL CABLING SHALL BE INSTALLED IN 3/4" MINIMUM CONDUIT. WHERE 3/4" CONDUIT IS NOT FEASIBLE, CONTRACTOR SHALL RECEIVE WRITTEN APPROVAL FROM FACILITY PROJECT MANAGER TO PROVIDE 1/2" OR SMALLER. ACCESS CONTROL CABLING SHALL BE ROUTED IN CONDUIT TO NEAREST CABLE TRAY AND IS PERMITTED TO BE RUN IN CABLE TRAY BACK TO ACCESS CONTROL PANEL.
 6. PROVIDE FACILITY STANDARD LABELING ON ALL ACCESS CONTROL CABLING (ROOM NAME, DEVICE AND DOOR NUMBER). LABEL RELAYS ON ACCESS CONTROL SYSTEM BOARDS WITH DEVICE BEING SERVED AND ROOM NUMBER.
 7. PROJECT MANAGER SHALL WITNESS COMPLETE FUNCTIONALITY TESTING OF ACCESS CONTROL, VIDEO SURVEILLANCE, AND PANIC ALARM SYSTEMS PRIOR TO FINAL ACCEPTANCE. TESTING SHALL INCLUDE REPRESENTATIVE FROM FACILITY SECURITY. COORDINATE SCHEDULE OF TESTING WITH PROJECT MANAGER.
 8. REFER TO ARCHITECTURAL PLANS FOR QUANTITY AND LOCATION OF AUTODOOR PUSH PLATES.

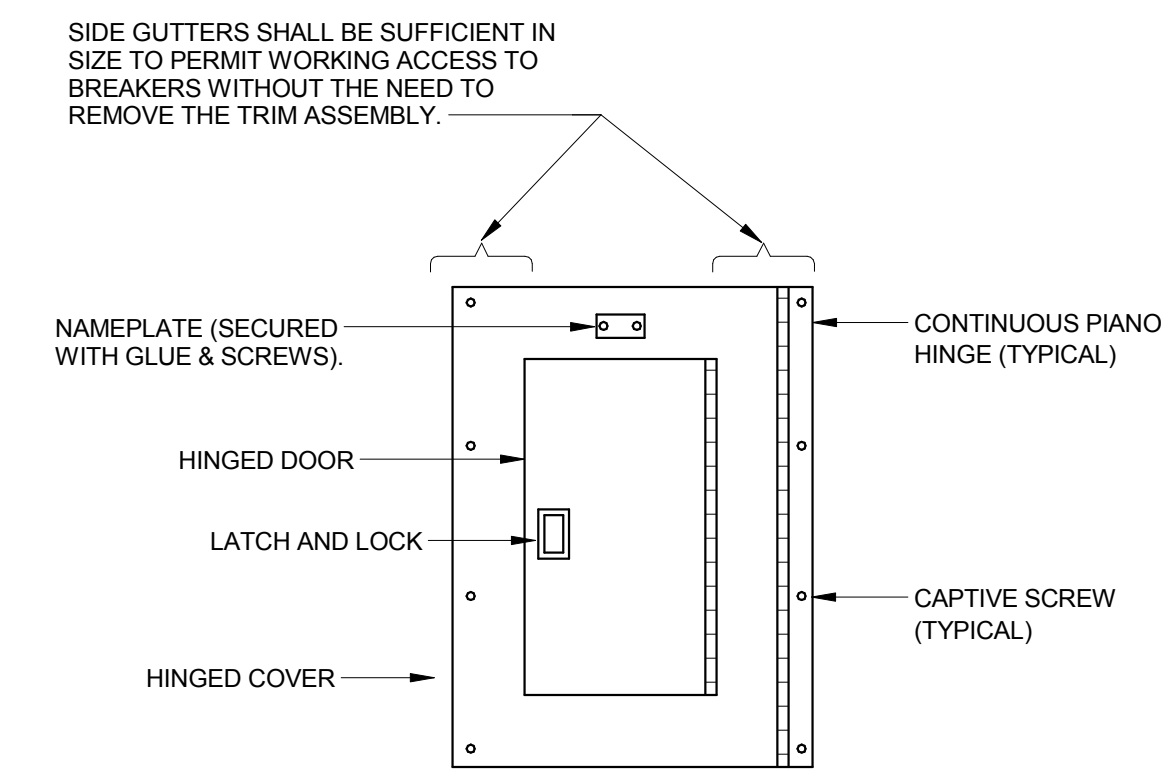


- EQUIPMENT NAMEPLATE REQUIREMENTS:**
1. PROVIDE AN IDENTIFICATION SIGN WHICH CLEARLY INDICATES INFORMATION FOR USE AND MAINTENANCE OF DISCONNECT SWITCHES, MOTOR STARTERS, SEPARATELY ENCLOSED CIRCUIT BREAKERS, AND CONTROL DEVICES.
 2. PROVIDE ENGRAVED 1/2" (MIN.) LETTERING ON PHENOLIC NAMEPLATE WITH THE FOLLOWING COLOR FORMAT:
 - A. NORMAL POWER SYSTEM - BLACK BACKGROUND, WHITE LETTERS
 - B. EMERGENCY POWER SYSTEM - RED BACKGROUND, WHITE LETTERS
 3. REFER TO ELECTRICAL SPECIFICATIONS FOR ADDITIONAL INFORMATION.



- PANELBOARD NAMEPLATE REQUIREMENTS:**
- ELECTRICAL EQUIPMENT SUCH AS:
1. PROVIDE AN IDENTIFICATION SIGN WHICH CLEARLY INDICATES INFORMATION FOR USE AND MAINTENANCE OF PANELBOARDS, SWITCHBOARDS, SWITCHGEAR, MOTOR CONTROL CENTERS, TRANSFORMERS.
 2. PROVIDE LAMINATED PHENOLIC RESIN NAMEPLATE WITH 1/2" (MIN.) ENGRAVED LETTERING WITH THE FOLLOWING COLOR FORMAT:
 - A. 208/120 VOLTS (NORMAL) - GREEN BACKGROUND, WHITE LETTERS
 - B. 480/277 VOLTS (NORMAL) - BLACK BACKGROUND, WHITE LETTERS
 - C. 208/120 VOLTS (EMERG.) - WHITE BACKGROUND, RED LETTERS
 - D. 480/277 VOLTS (EMERG.) - RED BACKGROUND, WHITE LETTERS
 3. REFER TO ELECTRICAL SPECIFICATIONS FOR ADDITIONAL INFORMATION.

PANELBOARD NAMEPLATE DETAIL
NOT TO SCALE



- PANELBOARD CONSTRUCTION NOTES**
1. ALL NEW PANELBOARDS SHALL BE PROVIDED WITH SUB-FEED LUGS AND SUFFICIENT SIZE WIRING GUTTERS TO ACCOMMODATE ALL FEEDERS (INCLUDING FUTURE) IN A CODE COMPLYING MANNER. FEED THROUGH LUGS ARE NOT ACCEPTABLE.
 2. PROVIDE NAMEPLATE FOR ALL PANELBOARDS. REFER TO EQUIPMENT NAMEPLATE DETAIL FOR ADDITIONAL INFORMATION.
 3. REFER TO SPECIFICATIONS FOR PANELBOARD CONSTRUCTION REQUIREMENTS REGARDING BUS, DIRECTORIES, FINISHES, ETC.
 4. ONE MONTH AFTER OCCUPANCY BY THE OWNER, THE ELECTRICAL CONTRACTOR SHALL MEASURE AND RECORD THE FEEDER PHASE CURRENTS FOR ALL NEW AND EXISTING PANELBOARDS ASSOCIATED WITH THIS PROJECT, AND SHALL SUBMIT DATA TO ENGINEER.
 5. PROVIDE UPDATED TYPED SCHEDULES IN EXISTING PANELS, AND NEW SCHEDULES IN NEW PANELS. SCHEDULE DESCRIPTIONS SHALL INCLUDE TYPE OF LOAD (RECEPTACLES, LIGHTING, EWC, ETC.) AND ROOM NUMBER WHERE LOAD IS LOCATED.
 6. CIRCUIT ASSIGNMENTS ARE FOR REFERENCE ONLY. CONTRACTOR SHALL VERIFY AVAILABILITY PRIOR TO ROUGH-IN AND ORDERING ENGRAVED COVERPLATES. REPORT ANY DEVIATIONS TO ENGINEER FOR APPROVAL.

PANELBOARD CONSTRUCTION DETAIL
NOT TO SCALE

FOR CONSTRUCTION

CONSULTANTS:

ADDENDUM 02	03/03/17
FINAL SUBMISSION	07/05/16
Revisions:	Date



ARCHITECT/ENGINEERS:



Drawing Title
ELECTRICAL DETAILS

Approved: Project Director

Project Title
VAMC WADE PARK
CLEVELAND RENOVATE
RESEARCH NORTH

Location
10701 EAST BLVD, CLEVELAND, OHIO 44106

Date
07/05/16

Checked By
MPL

Drawn By
TWM

Project Number
541-13-104

Building Number
1

Drawing Number

1-E11B

Office of
Construction
and Facilities
Management



FINAL SUBMISSION
FULLY SPRINKLERED