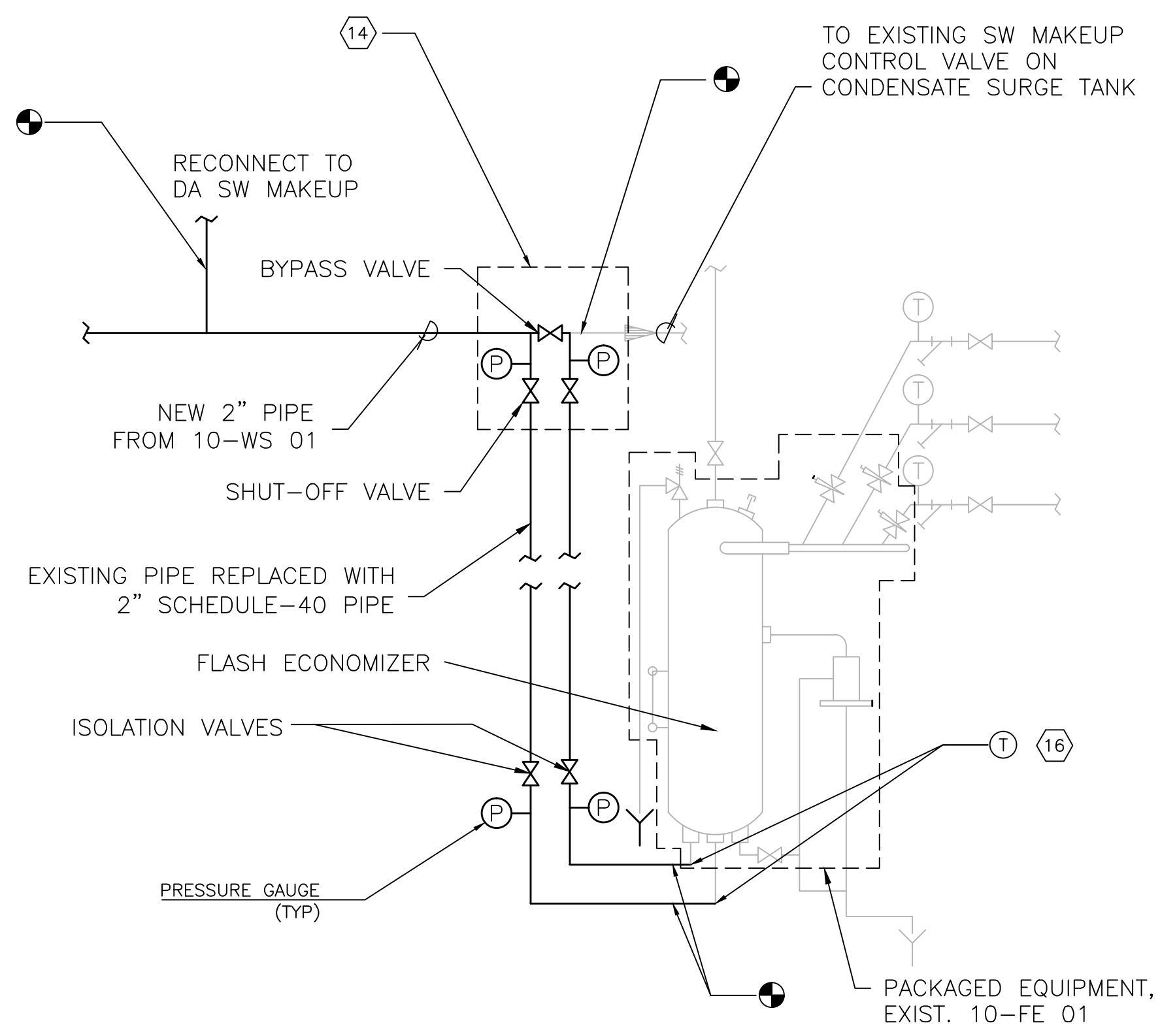
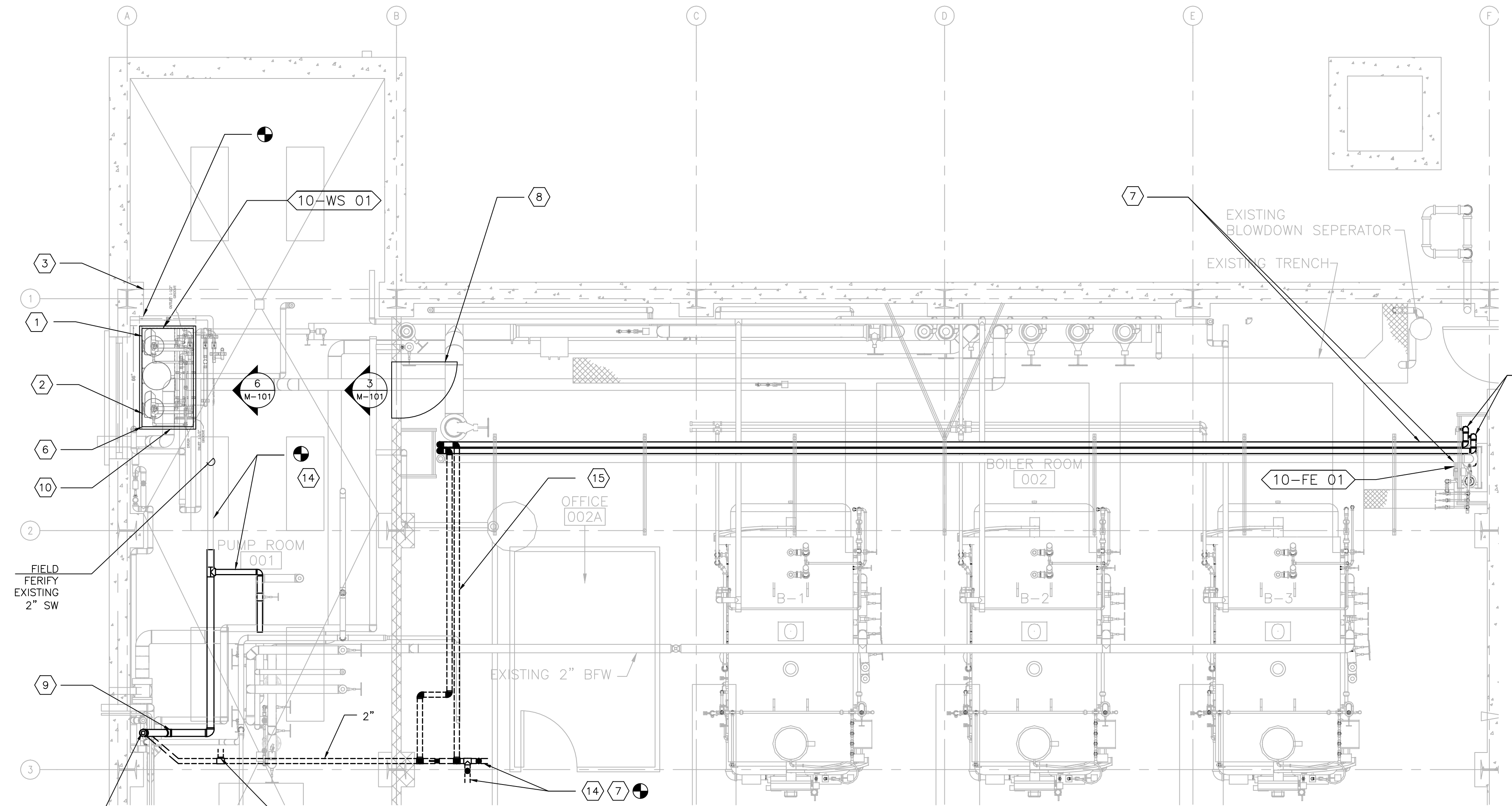


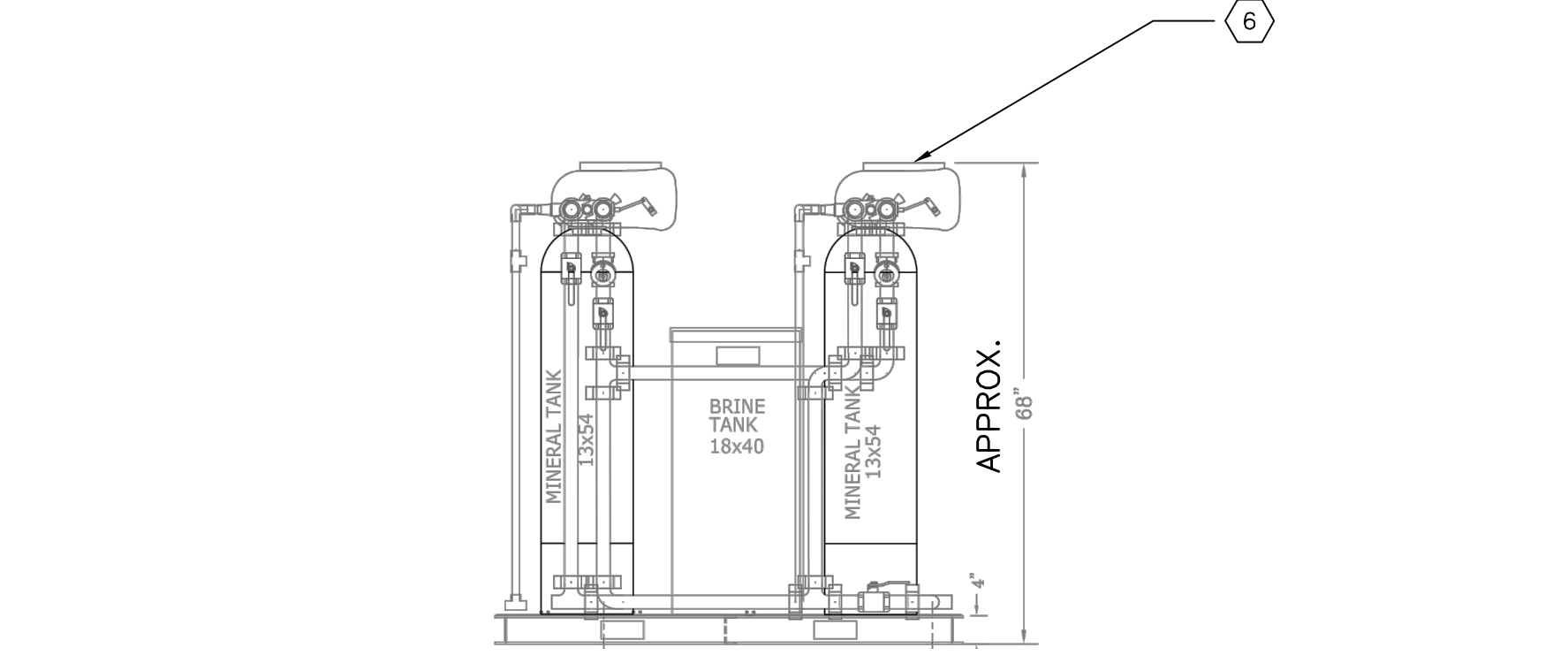
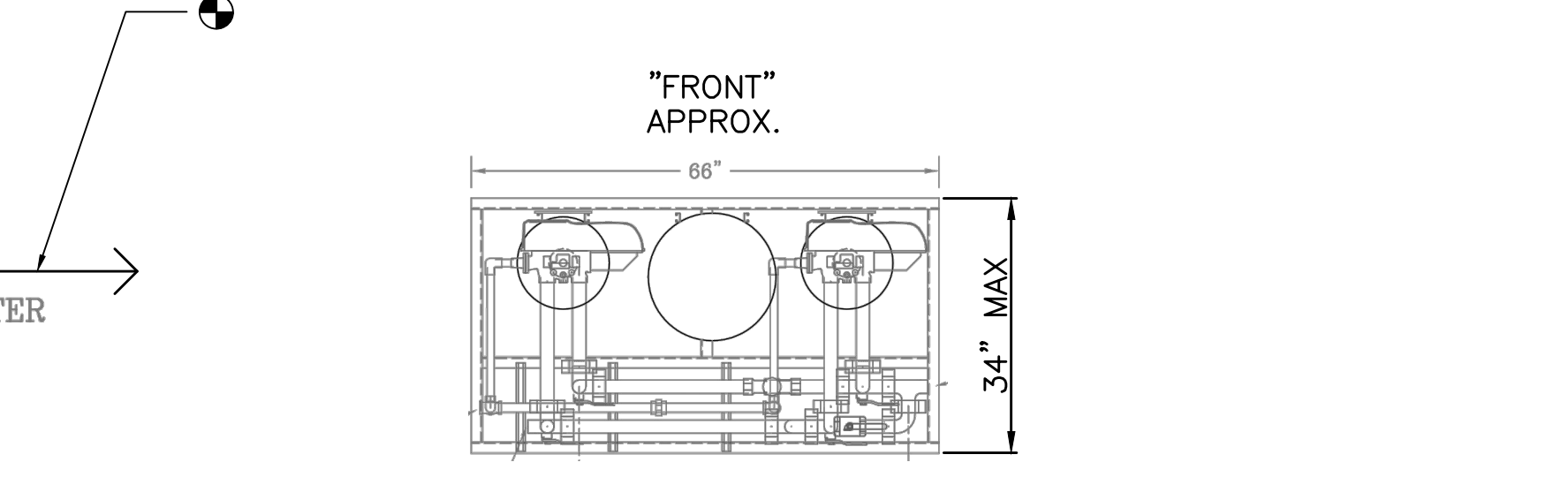
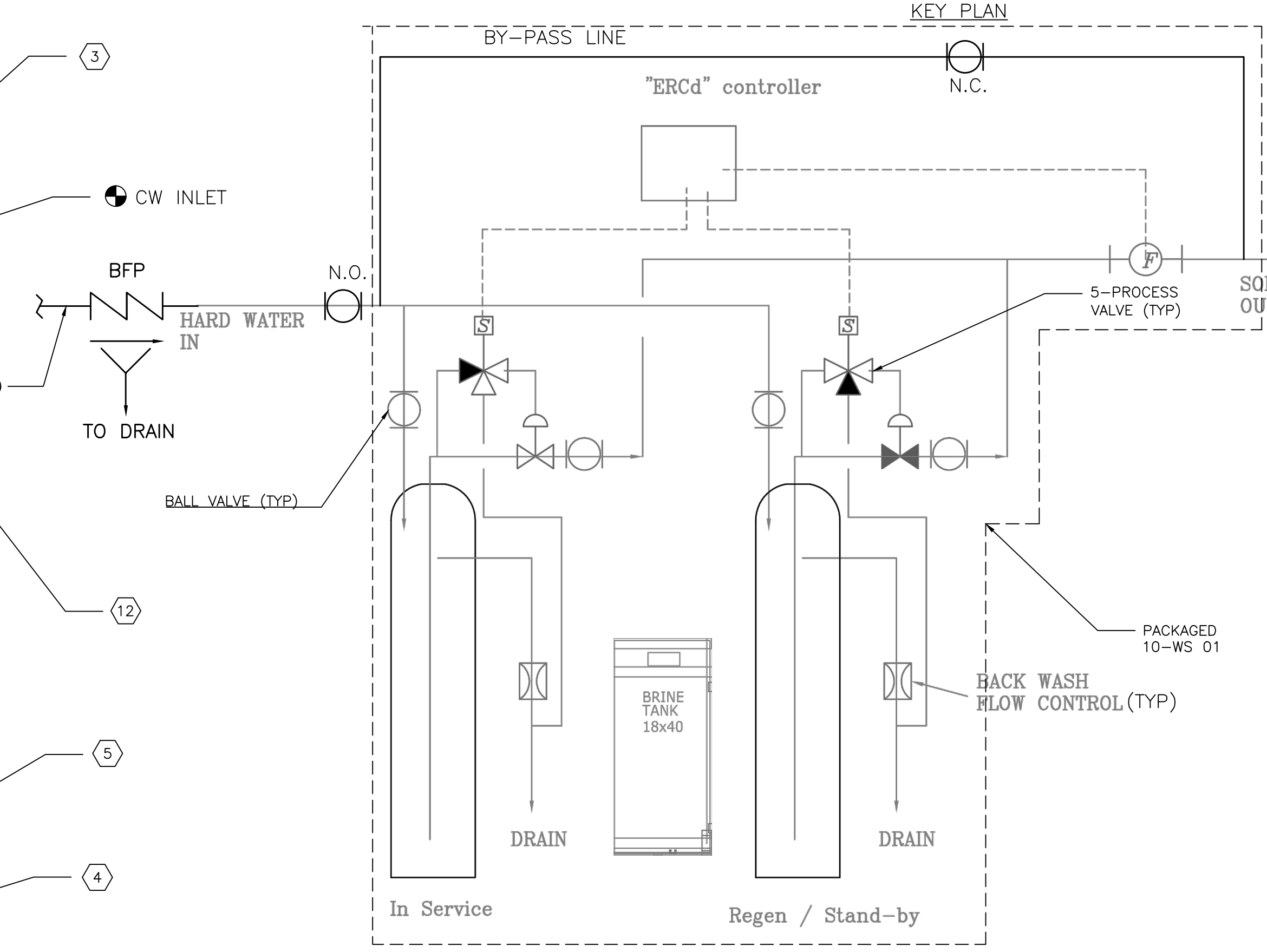
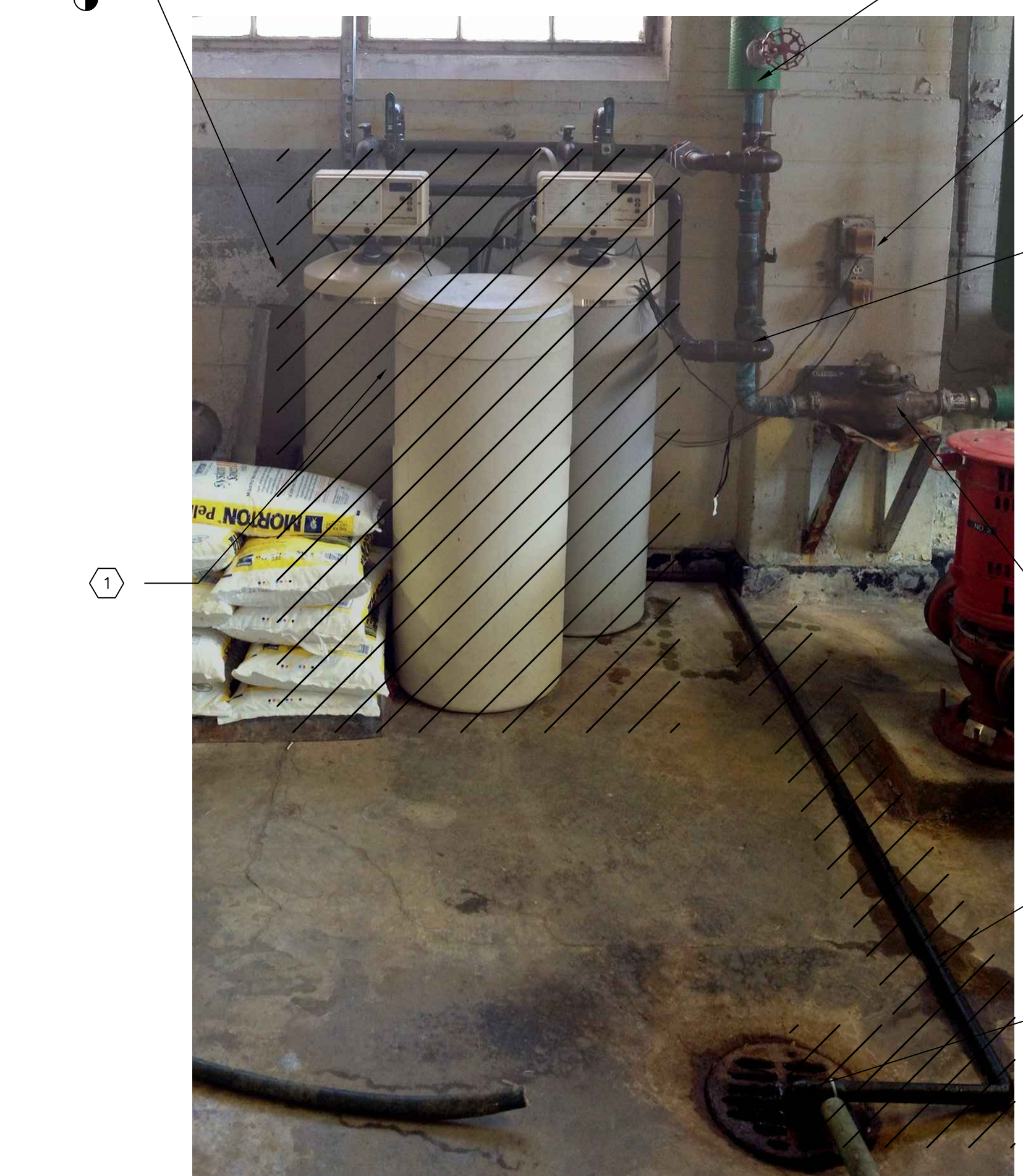
A three inches = one foot
B one and one half inches = one foot
C one inch = one foot
D three quarters inch = one foot
E one half inch = one foot
F three eighths inch = one foot
G one quarter inch = one foot
H one eighth inch = one foot



- GENERAL NOTES:
- FIELD VERIFY ALL SIZES OF EXISTING PIPES BEING MODIFIED PRIOR TO STARTING WORK.
 - VALVE TYPES SHOWN (ISOMETRICS, PLANS, ETC.) DO NOT NECESSARILY DEPICT ACTUAL VALVE TYPES TO BE INSTALLED. REFER TO SPECIFICATIONS FOR VALVE TYPES TO BE USED.
 - RECONNECT ANY SW BRANCH LINES OFF OF NEW 2" SW
- KEYED NOTES:
- DEMOLISH AND DISPOSE OF EXISTING WATER SOFTENING SYSTEM
 - REPLACE WITH PREFABRICATED SKID MOUNT WATER SOFTENING SYSTEM, 10-WS 01
 - REUSE EXISTING 110 VOLT ELECTRICAL RECEPTACLE FOR 10-WS 01 ELECTRICAL POWER
 - TEST FLOOR DRAIN FLOW CAPACITY; NOTIFY OWNER IF INADEQUATE
 - REPLACE AND ANCHOR DRAIN PIPES AND FITTINGS
 - ENSURE 24" MAINTENANCE CLEARANCE ABOVE THE UNIT AND BETWEEN THE UNIT AND THE WALL
 - REPLACE EXISTING 1" SW MAKEUP WITH 2" SHOWN IN DETAIL 2; 10-FE 01 EXISTING BLOW DOWN FLASH ECONOMIZER WILL NOT CHANGE; INSULATE AND PAINT TO MATCH EXISTING
 - FIELD VERIFY DOOR OPENING DIMENSION
 - REPLACE 1" SW LINE TO CONDENSATE SURGE TANK CONTROL VALVE ON UPPER LEVEL WITH 2" PIPE
 - NEW 3.5" TALL CAST-IN-PLACE HOUSEKEEPING PAD DOWELED INTO FLOOR; EXTEND PAD TO NORTH WALL AND 6" BEYOND 10-WS 01 SKID
 - SW UP THRU FLOOR TO DA AND CONDENSATE SURGE TANK; SW MAKE UP
 - EXISTING CW METER TO REMAIN
 - RECONNECT TO EXISTING SW MAKEUP TO DA ON UPPER LEVEL
 - RECONNECT TO EXISTING SW TO MAKEUP ON COLD SURGE TANK ON UPPER LEVEL; GAUGES AND VALVES ARE LOCATED ABOVE EXISTING CONDENSATE SURGE TANK
 - 2" SW ABOVE FROM THE 10-FE 01 TO THE CONDENSATE SURGE TANK ON UPPER LEVEL
 - EXISTING TEMPERATURE INDICATOR WELLS

- DRAWING SYMBOLS
- DETAIL NUMBER
 - DRAWING NUMBER WHERE DRAWN
 - DETAIL NUMBER
 - DRAWING NUMBER WHERE DRAWN
 - DRAWING WHERE DETAIL IS REFERENCED
 - SECTION/ISOMETRIC NUMBER
 - DRAWING NUMBER WHERE SHOWN
 - BUILDING NO. WHERE EQUIPMENT IS LOCATED.
 - EQUIPMENT ABBREVIATION (SUPPLY FAN)
 - SUPPLY FAN NO. 3 IN BUILDING NO. 26
 - TYPICAL UNIT NO.
 - POINT OF CONNECTION BETWEEN NEW AND EXISTING WORK
 - NEW FIRST FLOOR SW PIPING LINE TYPE ON PLAN
 - NEW SECOND FLOOR SW PIPING LINE TYPE ON PLAN

- ABBREVIATIONS
- B BOILER
 - BAS BUILDING AUTOMATION SYSTEM
 - BFW BOILER FEEDWATER
 - BOP BALANCE OF PLANT
 - CBD CONTINUOUS BLOWDOWN
 - CST CONDENSATE SURGE TANK
 - CW COLD WATER
 - DA DEAERATOR
 - FE FLASH ECONOMIZER
 - FHX FLUE HEAT EXCHANGER
 - FO FUEL OIL
 - FOR FUEL OIL RETURN
 - FOS FUEL OIL SUPPLY
 - MAU MAKE-UP AIR UNIT
 - HP HIGH PRESSURE
 - HPC HIGH PRESSURE CONDENSATE
 - HPS HIGH PRESSURE STEAM
 - LP LOW PRESSURE
 - LPC LOW PRESSURE CONDENSATE
 - LPS LOW PRESSURE STEAM
 - LPS LOW PRESSURE STEAM
 - MP MEDIUM PRESSURE
 - MPC MEDIUM PRESSURE CONDENSATE
 - MPS MEDIUM PRESSURE STEAM
 - NC NORMALLY CLOSED
 - NG NATURAL GAS
 - NO NORMALLY OPEN
 - OEM ORIGINAL EQUIPMENT MANUFACTURER
 - OFL OVERFLOW DRAIN
 - SV SAFETY RELIEF VALVE
 - SW SOFT WATER
 - TYP TYPICAL
 - VTR VENT THRU ROOF



CONSULTANTS:		ARCHITECT/ENGINEERS:		Drawing Title		Project Title		Project Number		Office of Construction and Facilities Management Department of Veterans Affairs	
				MECHANICAL GROUND FLOOR PLAN		UPGRADE WATER SOFTENER		----			
				Approved Project Director		Location		Building Number			
						VAMC FAYETTEVILLE, ARKANSAS		10			
Revisions						Date		Checked		Drawn	
						03/27/2012		RPV		JBS	
										Dwg 2 of 2	