

PART VI

SCHEDULE E

PART VI: SCHEDULE E--ROOM FINISH, DOORS & HARDWARE

**SECTION 1 ROOM FINISH, DOOR AND HARDWARE SCHEDULE--GENERAL..... 3**

1.1 ROOM FINISHES, DOOR AND HARDWARE SCHEDULE ..... 3

1.1.1 USE OF SCHEDULE E ..... 3

1.1.2 OTHER REQUIREMENTS..... 5

1.1.3 WALLCOVERING PROTECTIVE (WP), RIGID PVC SHEET ..... 5

1.2 DOORS ..... 5

1.2.1 DOORS ..... 5

1.2.2 DOOR TYPES..... 7

1.2.3 DOOR SIZES ..... 8

1.2.4 //LEAD LINED DOORS AND FRAMES// ..... 9

1.3 FINISH HARDWARE..... 10

1.3.1 GENERAL ..... 10

1.3.2 BUTT HINGES ..... 10

1.3.3 CONTINUOUS HINGES ..... 11

1.3.4 DOOR CLOSING DEVICES ..... 12

1.3.5 DOOR STOPS ..... 12

1.3.6 LOCKS AND LATCHES..... 13

1.3.7 PUSH-BUTTON COMBINATION LOCKS ..... 13

1.3.8 ELECTROMAGNETIC LOCKS..... 14

1.3.9 CARD READERS..... 14

1.3.10 ELECTRIC STRIKES ..... 15

1.3.11 KEYS..... 15

1.3.12 KEY CABINET ..... 15

1.3.13 ARMOR PLATES, COMBINATION KICK-MOP PLATES AND DOOR EDGING..... 16

1.3.14 EXIT DEVICES ..... 17

1.3.15 WEATHERSTRIPS (FOR EXTERIOR DOORS) ..... 17

1.3.16 MISCELLANEOUS HARDWARE ..... 17

1.3.17 PADLOCKS FOR VARIOUS DOORS, GATES AND HATCHES ..... 17

1.3.18 HARDWARE SETS..... 17

SECTION 2 SCHEDULE E

**PART VI SCHEDULE E--ROOM FINISH, DOORS & HARDWARE****SECTION 1 ROOM FINISH, DOOR AND HARDWARE SCHEDULE--GENERAL**

Schedule E lists each type of space or room required in the outpatient clinic. The following information is listed for each space in the Schedule:

Department, Area and Function

Floor, Wall and Ceiling Finishes

Door Symbol and Hardware Set

If the Lessor believes that there are spaces or conditions not included in this Schedule, the question shall be referred to the Contracting Officer.

**1.1 ROOM FINISHES, DOOR AND HARDWARE SCHEDULE****1.1.1 USE OF SCHEDULE E**

**THE REQUIREMENTS IN THIS SCHEDULE APPLY TO ALL SPACES TO BE OCCUPIED BY VA IN THE OUTPATIENT CLINIC. LESSOR SHALL PROVIDE MATERIALS, FINISHES, DOORS, FRAMES, AND HARDWARE IN ACCORDANCE WITH THIS SCHEDULE AND THE REQUIREMENTS SPECIFIED IN THIS SFO.**

Lessor shall provide each space with door(s) of the type and size as listed in Schedule E and quantified in Schedule C with hardware as noted. Doors and hardware requirements are indicated by their respective door types and hardware set numbers in this Schedule. Additional requirements are defined in Paragraph 1.3, "Doors and Hardware".

The Lessor shall provide room finishes in each room in accordance with Schedule E and quantified in Schedule C. Common areas or building service areas that are indicated in Schedule E and are not included in the NUSF leased by VA are specifically excluded from the quantities listed in Schedule C. Finishes are shown in the schedules for the floor, base, wainscot, wall, and ceiling surfaces for each room or space. The following are abbreviations used for materials and codes throughout the room finishes, door, and hardware schedule. The Lessor shall coordinate abbreviations used in the construction documents prepared by the Lessor with the abbreviations and symbols used in this SFO.

- A Door Modification -Vision panel, security, 10" x 10" Laminated Glass
- AC Door Modification -Access Control Device (Card Reader, Biometric Reader, Keypad, Etc.)
- ADO Door Modification -Automatic Door Opener, closer
- AT Ceiling -Suspended Acoustical Tile Ceiling System
- AT(SP) Ceiling -Suspended Acoustical Tile Ceiling System with (Sprayed Plastic) Finish
- C Floor -Concrete /Colored Hardener (non-slip) [ed note: convert SF to SY]
- CMU Wall -Filler and Paint on Concrete Masonry Unit substrate (note: Concrete Masonry Units scheduled separately w/partition systems)
- CP Floor CP -Carpet (without Cushion Broadloom) [ed note: convert SF to SY]

CR	Door Modification -Electronic Card Reader, secure access
CT	Wall or Wainscot -Ceramic Tile and Cementitious Backer Board (Wainscot 4'-0" with bullnose cap)
D	Door Modification -Vision panel, 4" x 25" Tempered Double Insulated
DEML	Door Modification -Delayed Egress Magnetic Lock
DEPH	Door Modification -Delay Egress Panic Exit Device Hardware
DPS	Door Modification -Door Position Switch, door or alarm contact
EL	Door Modification -Electric Lock or Electric Lever Exit Device
ELR	Door Modification -Electric Latch Retraction Exit Device
EMCH	Door Modification -Electro-Mechanical Closer-Holder
EPY	Floor -Epoxy Coating
EXP	Ceiling -Exposed Structure, Painted
F	Door Modification -Half Glass Door, Fire Rated Glazing
GWB	Wall -Paint on GWB substrate (note: GWB scheduled separately w/partition systems)
GWB	Ceiling -Gypsum Wallboard System, Fully Finished, Painted
GWB(SC)	Ceiling -Gypsum Wallboard Systems with High Build Glazed (Special Coating)
GWB(SC)	Wall -High Build Glazed (Special Coating) on GWB substrate (note: GWB scheduled separately w/partition systems)
GWB/AT/EXP	Ceiling -Combination, per submitted Lobby/Concourse design
GWB-MR	Wall - Mold Resistant Paint on GWB Mold Resistant substrate (note: GWB scheduled separately w/partition systems)
GWB-T	Wall - Acoustical/Tackable Wall Covering for GWB substrate (one wall per room) (note: GWB scheduled separately w/partition systems)
GWB-W	Wall -Wall Covering (Vinyl Coated Fabric) for Mold Resistant GWB substrate (note: GWB scheduled separately w/partition systems)
L	Door Modification - Louver "L"
LP	Door Modification - Light Proof Louver "LP"
LVT	Floor - Luxury Vinyl Tile - Printed and/or Embossed (Solid Vinyl Tile)
M	Door Modification -Mechanical Seal, light proof & sound retarding
MHO	Door Modification -Magnetic Hold-Open (Wall or Floor Mounted)
PB	Door Modification -Mechanical Push Button Combination Lock (Stand Alone), secure access
PRB	Base -Profile Base
PT	Floor or Base - Porcelain Tile
PVC	Wainscot 4'-0" -High Impact Wall Covering
RAF	Floor -Resilient Athletic
RB	Base -Resilient Base (Rubber w/ factory formed inside/outside corners)
RES	Floor or Base -Resinous /Slip Resistant (Base Integral to Flooring)
REX	Door Modification -Request-to-Exit Switch, in Latching Device Inside Trim
RF	Floor or Base -Rubber Flooring or Rubber Base

**Part VI: Schedule E – Room Finish, Door & Hardware -- Page 4 of 42**

RR	Door Modification -Electric Remote Release Button, closer
RSF	Floor or Base -Resilient Sheet (chemically welded seams, Base Integral to Flooring)
S	Wall -Solid Surface Panels over concrete backer board.
SVT	Floor -Solid Vinyl Tile (Luxury Vinyl Tile)
T	Door Modification -Vision panel, 4" x 25" Tempered Glass
V	Door Modification - Lead Glass, radiation shielding
VCT	Floor -Resilient Tile (Vinyl Composition Tile)
WG/BG	Continuous Wall Guard / Bumper Guard / Corner Guard Protection
WSF	Floor or Base -Welded Seam Sheet (heat welded with rod, Base Integral to Flooring)

### 1.1.2 OTHER REQUIREMENTS

#### A. Safety Glass

There are two (2) types of safety glass that may be required in Interior Spaces; these are:

#### B. Laminated Fire Glass shall be used in fire rated assemblies

Tempered Glass ("T") shall be used in all other Observations Windows and Doors with vision panels, including side lights.

#### C. Wall Protection at Drinking Fountains and Lavatories

Provide vinyl wall covering behind Drinking Fountain Alcoves where wallboard or plaster finish occur and behind lavatories and end walls in examination rooms, treatment rooms, etc. at a minimum 50 inches wide (or terminating at the nearest inside corner). The vinyl wall covering shall go from base to ceiling.

### 1.1.3 WALLCOVERING PROTECTIVE (WP), RIGID PVC SHEET

Install rigid PVC sheet wall protection at locations indicated //in Schedule E// //on conceptual drawings// over primed GWB //or plaster// substrate. //Provide impact-resistant GWB under wallcovering of 0.060-inch or greater thickness.// Do not seam within 24 inches of internal or external corners. Install covering before installation of bases, cabinets, hardware, or items attached to or spaced slightly from wall surface. Do not install covering more than 1/4 inch below top of resilient base. Terminate top of wallcovering at //handrail// //chair rail// //[\_\_\_\_ inches above finished floor]// //[\_\_\_\_]//.

## 1.2 DOORS

### 1.2.1 DOORS

The Door Symbol column in Schedule E identifies the type, size and special features of doors for use in a room or space. The number and letters used for the Door Symbol have the following meaning; the first number indicates door type and door material (odd nos. wood and

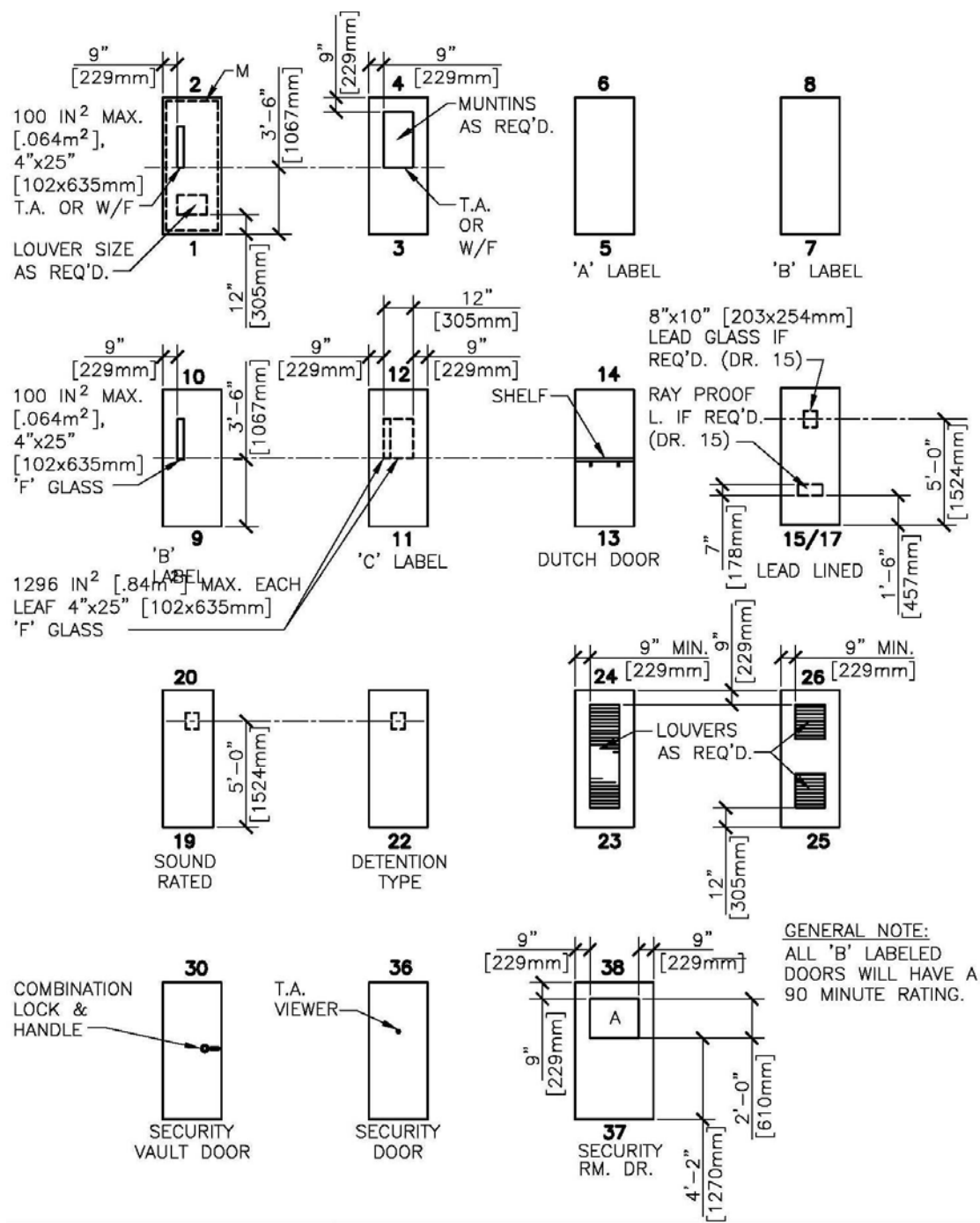
**Part VI: Schedule E – Room Finish, Door & Hardware -- Page 5 of 42**

even nos. steel), e.g., "1, 2, 4, etc.". The first letter (or letters) indicate door size e.g. "S, UU, V, etc." The letter after a dash (e.g., "-A") indicates a modification to a door. Use these symbols and designations at door openings on floor plan drawings.

For additional door requirements see Architectural Criteria in Sections 6 and 7 in Part I of the SFO.

Door Swing: Doors to Housekeeping Aids Closets (HAC) shall open out. HAC doors shall swing out 180° where possible.

1.2.2 DOOR TYPES

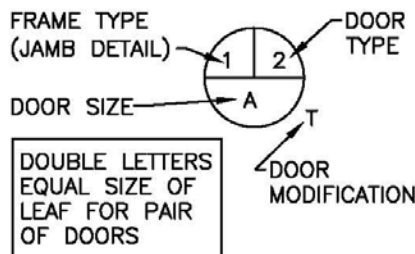


## 1.2.3 DOOR SIZES

DOOR SIZES									
MK	WIDTH		HEIGHT		MK	WIDTH		HEIGHT	
	IN	[mm]	IN	[mm]		IN	[mm]	IN	[mm]
A	1'-6"	[457]	6'-8"	[2032]	N	2'-0"	[610]	7'-0"	[2134]
B	2'-0"	[610]	6'-8"	[2032]	O	2'-2"	[660]	7'-0"	[2134]
C	2'-2"	[660]	6'-8"	[2032]	P	2'-4"	[711]	7'-0"	[2134]
D	2'-4"	[711]	6'-8"	[2032]	Q	2'-6"	[762]	7'-0"	[2134]
E	2'-6"	[762]	6'-8"	[2032]	R	2'-8"	[813]	7'-0"	[2134]
F	2'-8"	[813]	6'-8"	[2032]	S	3'-0"	[914]	7'-0"	[2134]
G	2'-10"	[864]	6'-8"	[2032]	T	3'-4"	[1016]	7'-0"	[2134]
H	3'-0"	[914]	6'-8"	[2032]	U	3'-6"	[1067]	7'-0"	[2134]
I	3'-2"	[965]	6'-8"	[2032]	V	3'-8"	[1118]	7'-0"	[2134]
J	3'-4"	[1016]	6'-8"	[2032]	W	3'-10"	[1168]	7'-0"	[2134]
K	3'-8"	[1118]	6'-8"	[2032]	X	4'-0"	[1219]	7'-0"	[2134]
L	3'-10"	[1168]	6'-8"	[2032]	Y	3'-0"	[914]	8'-0"	[2438]
M	1'-6"	[457]	7'-8"	[2337]	Z	UNASSIGNED			

DOOR MODIFICATIONS

A LAMINATED GLASS  
 D DOUBLE GLAZED  
 TEMPERED GLASS  
 H ELECTRIC HOLD  
 L LOUVER  
 LP LIGHT PROOF LOUVER  
 M MECH. SEAL FOR LIGHT  
 PROOF & SOUND  
 RETARDING DOOR  
 T TEMPERED GLASS  
 U UNDERCUT 1" [25mm]  
 V LEAD GLASS  
 F FIRE RATED GLAZING

DOOR SYMBOLLEGEND (SEE ELEVATIONS)

[ ] GLASS OR LOUVER  
 REQUIRED BY  
 MODIFICATION  
 [ ] GLASS OR LOUVER  
 REQUIRED BY  
 ELEVATION TYPE

NOTES:

1. ALL DOORS SHALL BE FLUSH - 1 3/4" [44mm] THICK UNLESS NOTED OTHERWISE.
2. TOP & SIDE RAILS SHALL BE 9" [229mm] MIN. BOTTOM RAILS SHALL BE 12" MIN. [305mm].
3. DOOR TYPES 7, 8, & 9 SHALL NOT BE USED FOR OPPOSING DOORS.
4. EVEN NUMBERS ARE METAL; ODD NUMBERS ARE WOOD.

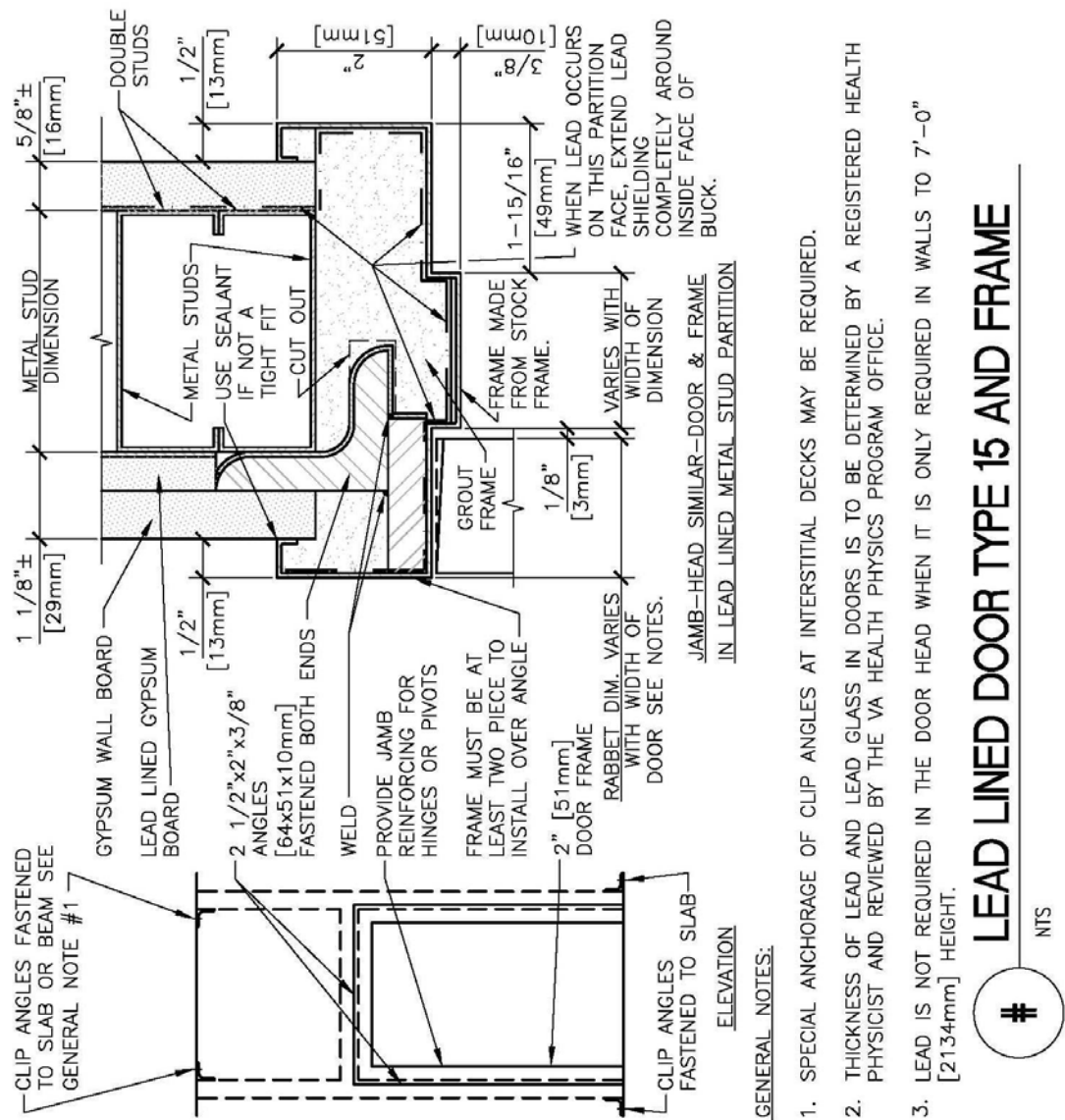


Department of  
Veterans Affairs

DETAIL TITLE / DOOR SCHEDULE



1.2.4 //LEAD LINED DOORS AND FRAMES//



Department of Veterans Affairs

DETAIL TITLE / LEAD LINED DOOR  
TYPE 15 AND FRAME

1.3 FINISH HARDWARE

1.3.1 GENERAL

A. Hardware Set Numbers on Schedule

Except for protective plates, door stops, mates, thresholds and the like specified herein, hardware requirements for each door are indicated in the Room Finish and Door Schedule by numbers that correspond to the following hardware sets listed in this SFO.

B. Manufacturers' Catalog Number References

Where manufacturers' products are specified herein, products of other manufacturers which are considered equivalent to those specified may be used. Manufacturers whose products are specified are identified by abbreviations as follows:

Adams-Rite	Adams Rite Mfg. Co.	Glendale, CA
Glynn Johnson	Glynn Johnson Co.	Chicago, IL
LCN	LCN Closers	Princeton, IL
Firemark	Rixon-Firemark Co.	Chicago, IL
Hager	Hager Hinge Company	Saint Louis, MO
Stanley	The Stanley Works	New Britain, CT
Trimco	Triangle Brass Mfg. Co.	Los Angeles, CA
Unican	Simplex Security Systems	Collinsville, CT
Von Duprin	Von Duprin Hardware Co.	Indianapolis, IN
Zero	Zero Weather Stripping Co.	New York, NY

C. Keying

All cylinders shall be keyed into Grand Master Key System. Provide removable core cylinders that are removable only with a special key or tool without disassembly of knob or lockset Cylinders shall be 7 pin type. Keying information shall be furnished at a later date by the Resident Engineer.

1.3.2 BUTT HINGES

A. ANSI A156.1.

The following types of butt hinges shall be used for the types of doors listed, except where otherwise specified:

- (1) Exterior Doors  
Type A2112 for doors 900 mm (3 feet) wide or less and Type A2111 for doors over 900 mm (3 feet) wide. Hinges for exterior doors shall have non-removable pins.
- (2) Interior Doors  
Type 8112 for doors 900 mm (3 feet) wide or less and Type A8111 for doors over 900 mm (3 feet) wide.

(3) *Automatic doors hung on butts*

Type A2111 for exterior doors and aluminum doors, and Type A8111 for other doors.

(4) *Labeled Wood Fire Doors*

Type 8411 or Type 8412; these hinges shall be thru bolted to door with hex nuts and bolts.

### 1.3.3 CONTINUOUS HINGES

#### A. ANSI/BHMA A156.26

//Grade 1-150// //Grade 1-300// //Grade 1-600//.

(1) *Listed under Category N in BHMA's "Certified Product Directory."*

#### B. General

Minimum 0.120-inch- (3.0-mm-) thick, hinge leaves with minimum overall width of 4 inches (102 mm); fabricated to full height of door and frame and to template screw locations; with components finished after milling and drilling are complete:

(1) *Fire Pins*

Steel pins to hold labeled fire doors in place if required by tested listing.

#### C. Continuous, Barrel-Type Hinges

Hinge with knuckles formed around a pin that extends entire length of hinge.

(1) *Base Metal for Exterior Hinges*

Stainless steel.

(2) *Base Metal for Interior Hinges*

//Stainless steel// //Steel// //Aluminum//.

(3) *Base Metal for Hinges for Fire-Rated Assemblies*

//Stainless steel// //Steel//.

(4) *Manufacturers*

Hager Companies.

Markar Architectural Products, Inc.; a Subsidiary of Adams Rite Manufacturing Co.

McKinney Products Company; an ASSA ABLOY Group company.

Stanley Commercial Hardware; Division. of the Stanley Works and Zero International.

#### D. Continuous, Gear-Type Hinges

Extruded-aluminum, pinless, geared hinge leaves; joined by a continuous extruded-aluminum channel cap; with concealed, self-lubricating thrust bearings.

(1) *Manufacturers*

Bommer Industries, Inc.

Hager Companies.

McKinney Products Company; an ASSA ABLOY Group company.  
 Pemko Manufacturing Co.  
 Select Products Limited.  
 Zero International.

**1.3.4 DOOR CLOSING DEVICES**

Closing devices shall be products of one manufacturer for each type required.

The closer shall have 50 percent adjustable closing force over minimum value for that closer and have adjustable hydraulic back check effective between 60 degrees and 85 degrees of door opening.

Where specified, closer shall have hold-open feature.

Size Requirements: Size closers in accordance with manufacturer's recommendations or provide multi-size closers, sizes 1 through 6.

**1.3.5 DOOR STOPS**

- A. Conform to ANSI A156.16.
- B. Provide door stops wherever an opened door or any item of hardware thereon would strike a wall, column, equipment or other parts of building construction. For concrete, masonry or quarry tile construction, use lead expansion shields for mounting door stops.
- C. Where cylindrical locks with turn pieces or pushbuttons occur, equip wall bumpers Type L02251 (rubber pads having concave face) to receive turn piece or button.
- D. Substitute floor stops Type L02141 or L02161 as appropriate, when wall bumpers would not provide an effective door stop.
- E. Where drywall partitions occur, use floor stops, Type L02141 or L02161.
- F. Provide stop Type L02011 or L02181, as applicable for exterior doors.
- G. Omit stops where floor mounted door holders are required and where automatic operated doors occur.
- H. Provide appropriate roller bumper for each set of doors (except where closet doors occur) where two doors would interfere with each other in swinging.
- I. Provide appropriate door mounted stop on doors in individual toilets where floor or wall mounted stops cannot be used.
- J. Provide overhead surface applied stop Type C02541, ANSI A156.8 on patient toilet doors in bedrooms where toilet door could come in contact with the bedroom door.
- K. Provide door stops on doors where combination closer magnetic holders are specified.

1.3.6 LOCKS AND LATCHES

- A. Conform to ANSI A156.2. Locks and latches for doors 45 mm (1-3/4 inch) thick or over shall have beveled fronts. Lock cylinders shall have not less than // six pins // seven pins //. Cylinders for all locksets shall be removable core type. // Cylinders shall be furnished with construction removable cores and construction master keys. // Cylinder shall be removable by special key or tool. Construct all cores so that they will be interchangeable into the core housings of all mortise locks, rim locks, cylindrical locks, and any other type lock included in the Great Grand Master Key System. Disassembly of lever or lockset shall not be required to remove core from lockset. All locksets or latches on double doors with fire label shall have latch bolt with 19 mm (3/4 inch) throw. Provide temporary keying device or construction core of allow opening and closing during construction and prior to the installation of final cores.
- B. In addition to above requirements, locks and latches shall comply with following requirements:
1. Cylindrical Lock and Latch Sets: levers shall meet ADA (Americans with Disabilities Act) requirements. Cylindrical locksets shall be series 4000 Grade I. Knobs for series 4000 lock and latch sets shall have 57 mm (2-1/4 inch) diameters. Where two turn pieces are specified for lock F76, turn piece on inside knob shall lock and unlock inside knob, and turn piece on outside knob shall unlock outside knob when inside knob is in the locked position. (This function is intended to allow emergency entry into these rooms without an emergency key or any special tool.)
  2. Mortise Lock and Latch Sets: Conform to ANSI/BHMA A156.13. Mortise locksets shall be series 1000, minimum Grade 2. All locksets and latchsets shall have lever handles similar to Falcon S-lever Design. Lever handle shall be fabricated from wrought stainless steel. No substitute lever design or material shall be accepted. All locks and latchsets shall be furnished with curved lip strike and wrought box. Furnish armored fronts for all mortise locks.
  3. Auxiliary locks shall be as specified under hardware sets and conform to ANSI A156.5.

1.3.7 PUSH-BUTTON COMBINATION LOCKS

- A. ANSI/BHMA A156.5, Grade 1. Mechanical or electrically operated as indicated.
- B. Construction: Heavy duty cylindrical lock housing conforming to ANSI/BHMA A156.2, Grade 1. Lever handles and operating components in compliance with the UFAS and the ADA Accessibility Guidelines.
- C. Special Features: Key override to permit a master keyed security system and a key activated passage feature to allow access without using the entry code.
- D. Manufacturers:
1. Alarm Lock.
  2. Code Locks, LLC
  3. Locknetics; an Ingersoll Rand company.
  4. Kaba Ilco.

1.3.8 ELECTROMAGNETIC LOCKS

A. ANSI/BHMA A156.23

Electrically powered, of strength and configuration indicated; with electromagnet attached to frame and armature plate attached to door. Listed under Category E in BHMA's "Certified Product Directory."

- (1) Type  
Full exterior or full interior, as required by application indicated.
- (2) Strength Ranking  
//1500 lbf (6672 N)// //1000 lbf (4448 N)// //500 lbf (2224 N)//.
- (3) Inductive Kickback Peak Voltage  
Not more than //53// //0// V.
- (4) Residual Magnetism  
Not more than //4 lbf (18 N)// //0 lbf (0 N)// to separate door from magnet.

B. Delayed-Egress Locks

BHMA A156.24.// Listed under Category G in BHMA's "Certified Product Directory". //

- (1) Means of Egress Doors  
Lock releases within 15 seconds after applying a force not more than 15 lbf (67 N) for not more than 3 seconds, as required by NFPA 101.
- (2) Security Grade  
Activated from secure side of door by initiating device.
- (3) Movement Grade  
Activated by door movement as initiating device.

C. Manufacturers

Door Controls International.  
Doorguard Systems, Inc.  
Dortronics Systems, Inc.  
DynaLock Corp.  
Locknetics; an Ingersoll-Rand Company.  
Rutherford Controls Int'l. Corp.  
SARGENT Manufacturing Company; an ASSA ABLOY Group company.  
Securitron Magnalock Corporation; an ASSA ABLOY Group company.  
Security Door Controls.

1.3.9 CARD READERS

Provide and install card readers where indicated. Integrate card readers with other specified systems and systems that are in place.

1.3.10 ELECTRIC STRIKES

- A. ANSI/ BHMA A156.31 Grade 1.
- B. General: Use fail-secure electric strikes with fire-rated devices.
- C. Manufacturers:
  - 1. Adams Rite Manufacturing Co.
  - 2. Folger Adam Security Inc.; an ASSA ABLOY Group company.
  - 3. HES, Inc.; an ASSA ABLOY Group company.
  - 4. Locknetics; an Ingersoll-Rand Company.
  - 5. Precision Hardware, Inc.
  - 6. Von Duprin; an Ingersoll-Rand Company.

1.3.11 KEYS

- A. Stamp all keys with change number and key set symbol. Furnish keys in quantities as follows:

Locks/Keys	Quantity
Cylinder locks	2 keys each
Cylinder lock change key blanks	100 each different key way
Master-keyed sets	6 keys each
Grand Master sets	6 keys each
Control key	1 key

1.3.12 KEY CABINET

- A. ANSI Standard A156.5. Provide key cabinet made of cold rolled, 1.2 mm (0.0478 inch) thick furniture steel electro-welded. Doors shall have "no sag" continuous brass-pin piano type hinge and be equipped with chrome plated locking door handles, hook cam and two parasentric keys. All locks shall be nickel plated with solid brass pin tumbler cylinder keyed as directed. Key Cabinet and Key Control System shall accommodate all keys for this project plus 25 percent.
- B. Key tags shall consist of two sets: Permanent self-locking and loan key snaphook type with tag colors as follows: Red fiber marker of the permanent self-locking type approximately 32 mm (1-1/4 inch) in diameter engraved with the legend "FILE KEY MUST NOT BE LOANED." Also furnish for each hook a white cloverleaf key marker with snap-hooks engraved with the legend "LOAN KEY."

C. The manufacturer of the lock cylinders and locks shall attach a key tag to keys of each lock cylinder and shall mark thereon the respective item number and key change number. Provide each group of keys in a key gathering envelope (supplied by Key Cabinet Manufacturer) in which the lock manufacturer shall include the following information: Item number, key change number and door number. The contractor shall furnish the Key Cabinet Manufacturer the hardware and keying schedules and change keys.

D. The Key Cabinet Manufacturer shall set up a three-way cross index system, including master keys, listing the keys alphabetically, the hooks numerically and the key changes numerically on different colored index cards. Index cards shall be typewritten and inserted in a durable binder. Attach the keys to the two sets of numbered tags supplied with the cabinet. (The permanent tag and the loan key tag). Instruct the owner in proper use of the system. Install cabinet as directed by the Resident Engineer.

### **1.3.13 ARMOR PLATES, COMBINATION KICK-MOP PLATES AND DOOR EDGING**

A. Conform to ANSI Standard A156.6.

B. Provide protective plates and door edging as specified below:

1. Kick-mop plates and armor plates plastic or metal, Type J100 series, color as required.

2. Provide kick-mop plates for both sides of each door, except where noted as not required. Kick-mop plates shall be 125 mm (5 inches) high. On push side of doors where jamb stop extends to floor, make combination kick-mop plates 38 mm (1-1/2 inches) less than width of door, except pairs of metal doors which shall have plates 25 mm (1 inch) less than width of each door. Extend all other combination kick-mop plates to within 6 mm (1/4 inch) of each edge of doors. Kick mop plates shall butt astragals. For jamb stop requirements, see specification sections pertaining to door frames.

3. Kick-mop plates are not required on following door sides:

- a) Armor plate side of doors;
- b) Exterior side of exterior doors;
- c) Closet side of closet doors;
- d) Storage side of doors to or from storage spaces; and
- e) Both sides of aluminum entrance doors.

4. Armor plates for doors are listed under "Hardware Sets". Armor plates shall be 875 mm (35 inches) high and 38 mm (1-1/2 inches) less than width of doors, except on pairs of metal doors. Plates on pairs of metal doors shall be 25 mm (1 inch) less than width of each door. Where top of intermediate rail of door is less than 875 mm (35 inches) from door bottom, extend armor plates to within 13 mm (1/2 inch) of top rail. On doors equipped with panic devices, extend armor plates to within 13 mm (1/2 inch) of panic bolt cross bar.

5. Where louver or grille occurs in lower portion of doors, substitute stretcher plate and kick-mop plate in place of armor plate. Size of stretcher plate and kick-mop plate shall be 125 mm (5 inches) high.



**1.3.14 EXIT DEVICES**

A. Conform to ANSI Standard A156.3. Exit devices shall be Grade 1; type and function are specified in hardware sets. Provide flush with finished floor strikes for vertical rod exit devices in interior of building. Trim shall have lever handles similar to locksets, unless otherwise specified.

B. Exit devices for fire doors shall comply with Underwriters Laboratories, Inc., requirements for Fire Exit Hardware. Submit proof of compliance.

**1.3.15 WEATHERSTRIPS (FOR EXTERIOR DOORS)**

Conform to ANSI A156.22. Air leakage shall not to exceed 0.50 CFM per foot of crack length (0.000774m<sup>3</sup>/s/m).

**1.3.16 MISCELLANEOUS HARDWARE**

A. Cylinders for Various Partitions and Doors: Key cylinders same as entrance doors of area in which partitions and door occur. Provide cylinders to operate locking devices where specified for following partitions and doors:

1. Folding doors and partitions.
2. Slide-up doors.
3. Day gate on vault door.

D. Mutes: Conform to ANSI A156.16. Provide door mutes or door silencers Type L03011, of white or light gray color, on each steel door frame, except lead-lined frames and frames for sound-resistant, lightproof and electromagnetically shielded doors. Furnish 3 mutes for single doors and 2 mutes for each pair of doors, except double-acting doors. Provide 4 mutes or silencers for frames for each Dutch type door. Provide 2 mutes for each edge of sliding door which would contact door frame.

**1.3.17 PADLOCKS FOR VARIOUS DOORS, GATES AND HATCHES**

A. ASTM E883, size 50 mm (2 inch) wide chain; furnish extended shackles as required by job conditions. Provide padlocks, with key cylinders, for each door in following areas as noted.

B. Key padlocks as follows:

1. Chain Link Fence Gates for Electrical Substation and other Fenced Buildings or Areas: Engineer's set, except as otherwise specified.
2. Chain Link Fence Gates for Oxygen Storage: Maintenance supply set.
3. Roof Access and Scuttles: Engineer's set.

**1.3.18 HARDWARE SETS**

Following sets of hardware correspond to hardware numbers shown in Room  
Finish and Door Schedule. Only those hardware sets that are referenced  
**Part VI: Schedule E – Room Finish, Door & Hardware -- Page 17 of 42**

in the Schedule will be required. Disregard breaks in hardware set numbering sequence. Disregard hardware sets listed below but not shown in Schedule. Hardware Consultant working on a project will be responsible for providing additional information regarding these hardware sets.

INTERIOR SINGLE DOORS

**Set:1 - Non-locking. May be push/pull, hospital latch, or latchset in rooms as follows:**

- Dental - Instrument Cleaning/Prep

<u>Each Door to Have:</u>		<u>NON-RATED</u>
1	Continuous Hinge	x INTEGRAL HINGE GUARD CHANNEL X ADJUSTA-SCREWS
1	Hospital Latch	F01 x PADDLES POINTING DOWN
1	Closer	C02011/C02021
1	Armor Plate	J101 x 1.275 MM (0.050 INCH) THICKNESS
1	Edge Guard (@ Wood Doors)	J208M / J211 (VERIFY), CUT: HARDWARE
1	Overhead Stop	C01541-ADJUSTABLE
1	Auto Door Bottom	R0Y346 – HEAVY DUTY
2	Sets Self-Adhesive Seals	R0Y154
1	Vision panel "T", 4" x 25" Tempered Glass	

- Ambulatory Care -Primary Care – Exams (Patient Doors Only)
- Tele-Health - Tele-Retinal and Tele-Specialty

<u>Each Door to Have:</u>		<u>NON-RATED</u>
1	Continuous Hinge	
1	Latchset	F04
1	Kick Plate	J102
1	Wall Stop	L02101 CONVEX
1	Threshold	J32300 x 57 MM WIDTH (2-1/4 INCHES)
1	Auto Door Bottom	R0Y346 – HEAVY DUTY
2	Sets Self-Adhesive Seals	R0Y154

- Eye Clinic - Exam/Treatment Area**

<u>Each Door to Have:</u>		<u>RATED/NON-RATED</u>
1	Continuous Hinge	
1	Latchset	F04
1	Kick Plate	J102
1	Closer (@ rated doors)	C02011/C02021
1	Wall Stop	L02101 CONVEX
1	Threshold	J32300 x 57 MM WIDTH (2-1/4 INCHES)
1	Auto Door Bottom	R0Y346 – HEAVY DUTY
2	Sets Self-Adhesive Seals	R0Y154

- Physical Medicine and Rehabilitation (PMR) - PT/OT: Office/Exam/Treatment and OT: Treatment Clinic**

Same as set above, and additionally:	
1	Vision panel "T", 4" x 25" Tempered

**Set:2 - Privacy. May be standard privacy, hospital privacy (double thumbturn), keyed indicator privacy, or staff key-only entry indicator privacy in rooms as follows:**

- Ambulatory Care -Primary Care - GYN: Nested Patient Toilet and ETM: Toilet Patients, Unisex
- Dental - Patient Toilet
- Physical Medicine and Rehabilitation (PMR) - PT: Toilet, Patient
- Radiology - Patient Toilet

<u>Each Door to Have:</u>		<u>RATED/NON-RATED</u>
Hinges	QUANTITY & TYPE AS REQUIRED	
1 Keyed Privacy Indicator Lock	F13 x OCCUPANCY INDICATOR	
1 Closer	C02011/C02021	
1 Kick Plate	J102	
1 Mop Plate (@ Inswing Doors)	J103	
1 Floor Stop	L02121 x 3 FASTENERS	
1 Auto Door Bottom	R0Y346 – HEAVY DUTY	
2 Set Self-Adhesive Seals	R0Y154	
STONE THRESHOLD BY OTHER TRADES.		

- Ambulatory Care - Clinic Support - NS: Toilet, Staff,Unisex
- Pathology and Laboratory Medicine (PLM) - Toilet, Urine Specimen Collection

<u>Each Door to Have:</u>	<u>RATED/NON-RATED</u>
Hinges	QUANTITY & TYPE AS REQUIRED
1 Keyed Privacy Indicator Lock	F13 x OCCUPANCY INDICATOR
1 Closer	C02011/C02021
1 Kick Plate	J102
1 Mop Plate (@ Inswing Doors)	J103
1 Floor Stop	L02121 x 3 FASTENERS
1 Set Self-Adhesive Seals	R0Y154
STONE THRESHOLD BY OTHER TRADES.	

- **Lockers and Staff Toilets - Shower, Male and Shower, Female**
- **Physical Medicine and Rehabilitation (PMR)- OT: Training Toilet/Bath**
- **Radiology - Dressing Room**

<u>Each Door to Have:</u>	<u>NON-RATED</u>
Hinges	QUANTITY & TYPE AS REQUIRED
1 Privacy Lock	F02-MOD X OCCUPANCY INDICATOR
1 Kick Plate	J102
1 Mop Plate (@ Inswing Doors)	J103
1 Wall Stop	L02101 CONVEX
3 Silencers	L03011
STONE THRESHOLD BY OTHER TRADES.	

**Set:3 - Office. May include standard office with thumbturn or entry lock with thumbturn and deadlock in rooms as follows:**

- **Ambulatory Care – MAS - MAS: Office, Interview, Systems Furniture and MAS: PC/MHI Clinic Reception Counter**
- **Pharmacy - Office, Pharmacist / Consultation Room, System Furniture**
- **Physical Medicine and Rehabilitation (PMR) - PT/OT: Tech Office, Systems Furniture**
- **Prosthetics - Office, Dispensing Prosthetics, System Furniture and Office, Reception**
- **Service Organizations - Office, Service Org, Representative**
- **Ambulatory Care -Primary Care – Exams (Staff Only Doors)**
- **Ambulatory Care – Specialty - Observation Station, Mental Health**
- **Clinic Management - Office, Chief Medical Officer (MAO), Systems Furniture and Office, Chief Administrative Officer**
- **Pathology and Laboratory Medicine (PLM) - Office, Technician Workstations**

<u>Each Door to Have:</u>		<u>NON-RATED</u>
Hinges	QUANTITY & TYPE AS REQUIRED	
1 Office Lock	F04	
1 Floor Stop	L02121 x 3 FASTENERS	
1 Set Self-Adhesive Seals	R0Y154	
1 Coat Hook	L03121	

- Ambulatory Care - Clinic Support - Office, Systems Furniture
- CBHC - Office, Systems Furniture
- Clinic Management - Office, Clinic Manager and Office, Support Staff
- Pharmacy - Office, Pharmacy Workstations, System Furniture
- Tele-Health - Office, PTSD and Office, Psychologist
- Dental - Office, Dentist/Hygenist
- Eye Clinic - Office, Eye Care Provider
- Mental Health - MHC: Office, Counseling Staff

Same as set above, and additionally:

- 1
- Vision panel "T", 4" x 25" Tempered

- Audiology & Speech - AUD: Hearing Aid Fabrication / Modification Room and AUD: Office, Therapy Room, Audiologist

Each Door to Have:		<u>RATED/NON-RATED</u>
1	Continuous Hinge	x INTEGRAL HINGE GUARD CHANNEL X ADJUSTA-SCREWS
1	Office Lock	F04
1	Closer	CO2011/CO2021 @ RATED DOOR
1	Kick Plate	J102
1	Edge Guard (@ Wood Doors)	J208M / J211 (VERIFY), CUT: HARDWARE
1	Floor Stop	L02121 x 3 FASTENERS
1	Threshold	J32300 x 57 MM WIDTH (2-1/4 INCHES)
1	Auto Door Bottom	R0Y346 – HEAVY DUTY
2	Sets Self-Adhesive Seals	R0Y154

- Radiology -Image Processing Room**

Each Door to Have:		NON-RATED
	Hinges	QUANTITY & TYPE AS REQUIRED
1	Office Lock	F04
1	Floor Stop	L02121 x 3 FASTENERS
1	Coat Hook	L03121
1	Threshold	J32300 x 57 MM WIDTH (2-1/4 INCHES)
1	Auto Door Bottom	R0Y346 – HEAVY DUTY
2	Sets Self-Adhesive Seals	R0Y154
1	Mechanical Seal "M", light proof & sound retarding	

**Set:4 - Classroom. May include standard classroom, double-cylinder utility function (free egress always available), classroom hospital latch.**

- Lobby/Waiting - Toilet, Male, Public and Toilet, Female, Public**
- Lockers and Staff Toilets - Toilets, Male and Toilets, Female**

Each Door to Have:		NON-RATED/RATED
1	Continuous Hinge	
1	Public Restroom Lock	F09
1	Closer	C02011/C02021
1	Closer	CO2051/CO2061
1	Kick Plate	J102
1	Mop Plate (@ Inswing Doors)	J103
1	Floor Stop (@ Outswing Doors)	L02121 x 3 FASTENERS
1	Wall Stop (@ Inswing Doors)	L02101 CONVEX
1	Threshold	J32300 x 57 MM WIDTH (2-1/4 INCHES)
1	Auto Door Bottom	R0Y346 – HEAVY DUTY
2	Sets Self-Adhesive Seals	R0Y154
PROVIDE NON-HOLD-OPEN CLOSER AT TOILET ROOMS.		
STONE THRESHOLD BY OTHER TRADES.		

- Prosthetics, Radiology - Corridors (Non-Secure)**

<u>Each [ADO] Door to Have:</u>		<u>RATED</u>
1	Continuous Transfer Hinge	x INTEGRAL HINGE GUARD CHANNEL X ADJUSTA-SCREWS x 4-THRUWIRE TRANSFER X IN-HINGE ACCESS PANEL
1	Classroom Lock	F08
1	Electric Strike	E09311 (FAIL-SECURE), 24VDC
1	Power Supply	REGULATED, FILTERED, 24VDC, AMPERAGE AS REQUIRED
1	Kick Plate	J102
1	Mop Plate (@ Inswing Doors)	J103 @ TOILET ROOMS ONLY
1	Edge Guard (@ Wood Doors)	J208M / J211 (VERIFY), CUT: HARDWARE
1	Floor Stop	L02121 x 3 FASTENERS
1	Set Self-Adhesive Seals	R0Y154
AUTOMATIC DOOR OPERATOR AND CONTROLS POWER TRANSFER FOR RE-ACTIVATION SENSOR WIRING		

- General and Common Spaces, Ambulatory Care -Primary Care, Dental, Eye Clinic, Physical Medicine and Rehabilitation - Corridors (Non-Secure)**

Same as set above, and additionally:

- |   |                                     |
|---|-------------------------------------|
| 1 | Vision panel "T", 4" x 25" Tempered |
|---|-------------------------------------|



- Information Resource Management - Telecommunications Room, Support: Telephone Equipment Room, and Corridor

<u>Each Door to Have:</u>		<u>NON-RATED/RATED</u>
Hinges	QUANTITY & TYPE AS REQUIRED	
1 Utility Lock	F09	
1 Closer (@ rated doors)	C02011/C02021	
1 Closer (@ non-rated doors)	CO2051/CO2061	
1 Kick Plate	J102	
1 Floor Stop	L02121 x 3 FASTENERS	
1 Threshold	J32300 x 57 MM WIDTH (2-1/4 INCHES)	
1 Auto Door Bottom	R0Y346 – HEAVY DUTY	
2 Sets Self-Adhesive Seals	R0Y154	

- AAMS - MAS: Workroom/Mail
- Engineering - Biomedical Equipment Holding

Same as set above, and additionally:	
1 Vision panel "T", 4" x 25" Tempered	

- Education - Multipurpose Conference and ETM: Multipurpose Conference / Classroom
- Radiology - US: Ultrasound Room
- Ambulatory Care – Specialty - Group Therapy Room

<u>Each Door to Have:</u>		<u>NON-RATED/RATED</u>
Hinges	QUANTITY & TYPE AS REQUIRED	
1 Utility Lock	F09	
1 Closer (@ rated doors)	C02011/C02021	
1 Closer (@ non-rated doors)	CO2051/CO2061	
1 Kick Plate	J102	
1 Floor Stop	L02121 x 3 FASTENERS	
1 Threshold	J32300 x 57 MM WIDTH (2-1/4 INCHES)	
1 Auto Door Bottom	R0Y346 – HEAVY DUTY	
2 Sets Self-Adhesive Seals	R0Y154	

- Eye Clinic - Photography Room
- Ambulatory Care -Primary Care - Lactation Lounge

Each Door to Have:	<u>RATED/NON-RATED</u>
Hinges	QUANTITY & TYPE AS REQUIRED
1 Utility Lock	F09
1 Closer (@ Rated Doors)	C02011/C02021
1 Kick Plate	J102
1 Floor Stop	L02121 x 3 FASTENERS
1 Set Self-Adhesive Seals	R0Y154

- Ambulatory Care – MAS - MAS: PC/MHI Clinic Reception Counter and MAS: Central Reception Counter
- Physical Medicine and Rehabilitation (PMR) - PT: Clean Utility Area
- Lockers and Staff Toilets - Staff Break/Lunch Room
- Environmental Management - Infectious/Hazardous Waste, Soiled Linen Holding and Recyclable Waste

Same as set above, and additionally:
1 Vision panel "T", 4" x 25" Tempered

- Dental - Dental Lab

Each Door to Have:	<u>NON-RATED</u>
1 Continuous Hinge	x INTEGRAL HINGE GUARD CHANNEL X ADJUSTA-SCREWS
1 Utility Lock	F09
1 Armor Plate	J101 x 1.275 MM (0.050 INCH) THICKNESS
1 Edge Guard (@ Wood Doors)	J208M / J211 (VERIFY), CUT: HARDWARE
1 Floor Stop	L02121 x 3 FASTENERS
1 Set Self-Adhesive Seals	R0Y154

- Clinic Management, Service Organizations - Support Equipment**

Each Door to Have:		<u>RATED</u>
1	Continuous Hinge	x INTEGRAL HINGE GUARD CHANNEL X ADJUSTA-SCREWS
1	Utility Lock	F09
1	Closer	C02011/C02021
1	Armor Plate	J101 x 1.275 MM (0.050 INCH) THICKNESS
1	Edge Guard (@ Wood Doors)	J208M / J211 (VERIFY), CUT: HARDWARE
1	Floor Stop (@ Outswing Doors)	L02121 x 3 FASTENERS
1	Wall Stop (@ Inswing Doors)	L02101 CONVEX
1	Set Self-Adhesive Seals	R0Y154

- Ambulatory Care – Specialty - Observation/Treatment Room and ETM: Multipurpose Procedure Room**

Each Door to Have:		<u>NON-RATED</u>
1	Continuous Hinge	x INTEGRAL HINGE GUARD CHANNEL X ADJUSTA-SCREWS
1	Classroom Hospital Lock	F08 x PADDLES POINTING DOWN
1	Armor Plate	J101 x 1.275 MM (0.050 INCH) THICKNESS
1	Edge Guard (@ Wood Doors)	J208M / J211 (VERIFY), CUT: HARDWARE
1	Overhead Stop	C01541-ADJUSTABLE
1	Threshold	J32300 x 57 MM WIDTH (2-1/4 INCHES)
1	Auto Door Bottom	R0Y346 – HEAVY DUTY
2	Sets Self-Adhesive Seals	R0Y154

- **Dental - X-Ray Area**
- **Radiology - General Radiographic Room**

<u>Each Lead-Lined Door to Have:</u>		<u>NON-RATED</u>
1	Pivot Set	C07162 x 454KG (1000 LBS) WEIGHT CAPACITY
1	Intermediate Pivot	CO7311
1	Utility Hospital Lock	F09 x LEAD-LINED x PADDLES POINTING DOWN
1	Closer	CO2011/CO2021 x METAL LEAD-LINED COVER
1	Armor Plate	J101 x 1.275 MM (0.050 INCH) THICKNESS
2	Edge Guard (@ Wood Doors)	J208M / J211 (VERIFY), CUT: HARDWARE
1	Overhead Holder-Stop	C01541-ADJUSTABLE
1	Set Self-Adhesive Seal	R0Y154
1	Door Modification, Lead Glass "V", radiation shielding	

**Set:5 - Storeroom. May include standard storeroom, storeroom with deadbolt, institutional lock (lockable both sides).**

- **Ambulatory Care - Clinic Support and Environmental Management - Housekeeping Aids Closets**

<u>Each Door to Have:</u>		<u>NON-RATED</u>
	Hinges	QUANTITY & TYPE AS REQUIRED
1	Storeroom Lock	F07
1	Kick Plate	J102 (@ STORAGE, EVM, & HAC ROOMS ONLY)
1	Floor Stop (@ Inswing Doors)	L02121 x 3 FASTENERS
1	Wall Stop (@ Outswing Doors)	L02101 CONVEX
3	Silencers	L03011
1	Mechanical Push Button Combination Lock "PB" (Stand Alone), secure access	

- Information Resource Management – IT
- AAMS - A&D: Storage, Equipment, A&D: Storage, Medical Gas and A&D: Storage, Medical and General
- Education - Equipment Storage
- Dental - Mechanical Room
- Pathology and Laboratory Medicine (PLM) - PT: Storage, Equipment and OT: Storage, Equipment
- Prosthetics - Pros Appl Sto: Storage Area

<u>Each Door to Have:</u>		<u>RATED</u>
1	Continuous Hinge	x INTEGRAL HINGE GUARD CHANNEL X ADJUSTA-SCREWS
1	Storeroom Lock	F07
1	Closer	C02011/C02021
1	Armor Plate	J101 x 1.275 MM (0.050 INCH) THICKNESS
1	Edge Guard (@ Wood Doors)	J208M / J211 (VERIFY), CUT: HARDWARE
1	Floor Stop	L02121 x 3 FASTENERS
1	Set Self-Adhesive Seals	R0Y154

- Ambulatory Care - Clinic Support - ETM: Storage, Stretcher and Medical Equipment
- Mental Health - SAC: Utility and Storage

Same as set above, and additionally:

- |   |                                                            |
|---|------------------------------------------------------------|
| 1 | Door Modification, Half Glass Door, Fire Rated Glazing "F" |
|---|------------------------------------------------------------|

**Set:6 – Panic. May include exit only, passage lever, lockable lever, storeroom lever, pull.**

- General and Common Spaces, , and Radiology - Corridors (Non-Secure)
- Ambulatory Care -Primary Care - Vestibule

<u>Each [ADO] Door to Have:</u>		<u>NON-RATED/RATED</u>
1	Continuous Hinge	x INTEGRAL HINGE GUARD CHANNEL X ADJUSTA-SCREWS x 8-THRUWIRE TRANSFER X IN-HINGE ACCESS PANELS
1	Elec. Exit Device	TYPE 1 F08 LEVER (E04)
1	Key Cylinder	TYPE AS REQUIRED
1	Power Supply	BY EXIT DEVICE MFR. FOR E04 FUNCTION
1	Armor Plate	J101 x 1.275 MM (0.050 INCH) THICKNESS
1	Edge Guard (@ Wood Doors)	J208M / J211 (VERIFY), CUT: HARDWARE
1	Floor Stop	L02121 x 3 FASTENERS
1	Set Self-Adhesive Seals	R0Y154
POWER TRANSFER SHARED BY ELECTRIC PANIC AND RE-ACTIVATION SENSOR WIRING		

- Ambulatory Care -Primary Care - Corridors (Non-Secure)

Same as set above, and additionally:

- 1 Vision panel "T", 4" x 25" Tempered

- Audiology & Speech - Waiting Area, Specialties

Same as set above, and additionally:

- 1 Mechanical Seal "M", light proof & sound retarding

Set MH2 – Single Mental Health. Anit-Ligature. Keyed Privacy Indicator Lock, Keyed Deadlatch.  
Polycarbonate Vision Lite with Internal Blinds.

- Ambulatory Care – Specialty - Intervention (Seclusion) Room, Mental Health**

<u>Each Door to Have:</u>		<u>NON-RATED</u>
Hinges		QUANTITY & TYPE AS REQUIRED x HOSPITAL TIP
1 Keyed Privacy Lock		F12-MOD x TURNPIECE BOTH SIDES x LESS TRIM
1 Set Anti-Ligature Trim		
2 Anti-Ligature Thumbturns		
1 Kick Plate	J102	
1 Mop Plate (@ Inswing Doors)	J103	
1 Floor Stop	L02121 x 3 FASTENERS	
1 Auto Door Bottom	R0Y346 – HEAVY DUTY	
1 Set Seals	R0Y164	
1 Deadlatch	F30 LESS TRIM BOTH SIDES (Keyed both sides)	
1 Door Modification, Half Glass Door, Polycarbonate Vision Lite with Internal Blinds		
PROVIDE SECURITY FASTENERS FOR ALL HARDWARE ITEMS.		

## INTERIOR PAIRS OF DOORS

**Set:11 – Storeroom. May include standard storeroom, storeroom with deadbolt, institutional lock (lockable both sides).**

- General and Common Spaces - Mechanical Equipment Room
- AAMS – Store Room

<u>Each Pair to Have:</u>		<u>RATED/NR</u>
Hinges	QUANTITY & TYPE AS REQUIRED	
1 Set Auto Flush Bolts	TYPE 25 LESS BOTTOM BOLT	
1 Storeroom Lock	F07	
1 Coordinator	TYPE 21A	
1 Overlapping Astragal with Self-Adhesive Seal	R0Y634 x R0Y154 x THRU-BOLTS	
2 Closers	C02011/C02021	
2 Kick Plates	J102 (@ STORAGE ROOMS ONLY)	
2 Floor Stops	L02121 x 3 FASTENERS	
1 Threshold	J32300 x 57 MM WIDTH (2-1/4 INCHES)	
2 Auto Door Bottoms	R0Y346 – HEAVY DUTY	
2 Set Self-Adhesive Seals	R0Y154	

**Set:12 – Panic. May include exit only, passage lever, lockable lever, storeroom lever, pulls.**

- General and Common Spaces – Vestibule
- Radiology - Corridors (Non-Secure)

<u>Each [ADO] Pair Integrated Doors to Have:</u>		<u>RATED</u>
1	Key Cylinder	TYPE AS REQUIRED
BALANCE OF HARDWARE BY INTEGRATED DOOR ASSEMBLIES		
AUTOMATIC DOOR OPERATORS AND CONTROLS		



**Set:13 – Special. Could include sliding doors, folding doors, etc.**

- General and Common Spaces- Vestibule

Each [ADO] Bi-Parting Automatic Pair to Have:	<u>NON-RATED</u>
Integrated Door Assembly by Manufacturer	

**EXTERIOR DOORS**

**Set:E4 – Single Panic. May include exit only, pull, or lever.**

**May include Card Reader “CR” or Delayed Egress Panic Hardware “DEPH”.**

- Police - Operations Room
- General and Common Spaces - Corridors (Non-Secure) and Vestibule (Emergency Egress Only)

<u>Each Door to Have:</u>	<u>NON-RATED</u>
1 Continuous Hinge	
1 Anti-Vandal Pull	
1 Exit Device	TYPE 1 F03 LESS TRIM
1 Latch Protector (outswing dr.)	
1 Key Cylinder	TYPE AS REQUIRED
1 Closer	C02011
1 Kick Plate	J102
1 Floor Stop	L02121 x 3 FASTNERS
1 Threshold	J32120 x SILICONE GASKET
1 Door Sweep	R0Y416
1 Set Frame Seals	R0Y164
1 Drip	R0Y976
1 Transfer Hinge	4-WIRE TYPE AS REQUIRED
1 Electrified Lock	F07 (E01-REX, E06) 24VDC
1 Power Supply	REGULATED, FILTERED, 24VDC, AMPERAGE AS REQUIRED
1 Alarm Contact or Door Position Switch	
1 Vision panel "D", door, 4" x 25" Tempered Double Insulated	
120VAC POWER, CONDUIT, AND WIRING BY DIVISION 26.	
CARD READER BY DIVISION 28.	

**Set:E8 – Pair Storeroom. May include standard storeroom or storeroom with deadlock.**

- AAMS - A&D: Receiving and Issue area and Corridors (Non-Secure)**

<u>Each Pair to Have:</u>		<u>NON-RATED</u>
2	Continuous Hinge	
1	Set Auto Flush Bolts	TYPE 25
1	Dust Proof Strike	L04021
1	Storeroom Lock	F13-MOD x RIGID OUTSIDE LEVER x KEY RETRACTS DEADBOLT AND LATCHBOLT
1	Overlapping Astragal with Self-Adhesive Seal	R0Y634 x R0Y154 x THRU-BOLTS
1	Coordinator	TYPE 21A
2	Closer	C02011/C02021
2	Armor Plate	J101 x 3.125 MM (0.125 INCH) THICKNESS
2	Floor Stop	L02121 x 3 FASTNERS
1	Threshold (outswing door)	J32120 x SILICONE GASKET
1	Threshold (inswing door)	ALUMINUM, PER ARCHITECTURAL DETAIL
2	Door Sweep	R0Y416
1	Set Frame Seals	R0Y164
1	Drip	R0Y976
1	Door Position Switch	

SECURITY HARDWARE ABBREVIATIONS LEGEND:	
AC	= Access Control Device (Card reader, biometric reader, keypad, etc.)
ADO	= Automatic Door Operator
DEML	= Delayed Egress Magnetic Lock
DEPH	= Delayed Egress Panic Exit Device
DPS	= Door Position Switch (Door or Alarm Contact)
EL	= Electric Lock or Electric Lever Exit Device
PB	= Push-button Combination Lock (stand-alone)
RR	= Remote Release Button
ELR	= Electric Latch Retraction Exit Device
REX	= Request-to-Exit Switch in Latching Device Inside Trim

SECURITY DOORS

Set:SH2 -Detention Type Lock. Door Position Switch.

- Police - Holding Room

Each Door to Have:		NON RATED
1	Continuous Hinge	
1	Door Pull w/ Plate	J401 x J302
1	Lock	DETENTION TYPE LOCK
1	Strike/Keeper	AS REQUIRED
1	Overhead Stop	C01541-ADJUSTABLE X SEC. TORX
1	Door Position Switch	

Set:SH3 - Single Card reader door with Electric lockset or Push-button Combination Lock.

- Ambulatory Care -Primary Care, Clinic Management, Pharmacy and General and Common Spaces – Corridors (Secure)
- Police - Operations Room

<u>Each [AC, EL, REX, DPS] Door to Have:</u>		<u>RATED/NON-RATED</u>
Hinges	QUANTITY & TYPE AS REQUIRED	
1 Transfer Hinge	4-WIRE TYPE AS REQUIRED	
1 Electrified Lock	F07 (E01-REX, E06) 24VDC	
1 Power Supply	REGULATED, FILTERED, 24VDC, AMPERAGE AS REQUIRED	
1 Closer	C02011/C02021	
1 Floor Stop	L02121 x 3 FASTENERS	
1 Threshold	J32300 x 57 MM WIDTH (2-1/4 INCHES)	
1 Auto Door Bottom	R0Y346 – HEAVY DUTY	
2 Sets Self-Adhesive Seals	R0Y154	
1 Alarm Contact		
120VAC POWER, CONDUIT, AND WIRING BY DIVISION 26.		
CARD READER BY DIVISION 28.		

- Ambulatory Care - Clinic Support - ETM: Clean Utility Room and ETM: Soiled Utility Room
- Dental - Clean Storage and Linen and Soiled SPD Cart Holding
- Radiology - Clean Utility Room

Each [PB] Door to Have:		<u>NON-RATED/RATED</u>
1 Continuous Hinge	x INTEGRAL HINGE GUARD CHANNEL X ADJUSTA-SCREWS	
1 Push-button Combination Lock	N3 – A156.13 F07 G1 E06	
1 Closer	C02011/C02021	
1 Armor Plate	J101 x 1.275 MM (0.050 INCH) THICKNESS	
1 Edge Guard (@ Wood Doors)	J208M / J211 (VERIFY), CUT: HARDWARE	
1 Floor Stop	L02121 x 3 FASTENERS	
1 Set Self-Adhesive Seals	R0Y154	

- Ambulatory Care -Primary Care - NS: Medication Room
- Pharmacy - Drug Receiving: Breakdown and Verification

Each [AC, EL, REX, DPS] Door to Have:		<u>RATED</u>
1	Continuous Hinge	x INTEGRAL HINGE GUARD CHANNEL X ADJUSTA-SCREWS X 4-THRUWIRE TRANSFER X IN-HINGE ACCESS PANEL
1	Electrified Lock	F07 (E01-REX, E06) 24VDC
1	Power Supply	REGULATED, FILTERED, 24VDC, AMPERAGE AS REQUIRED
1	Closer	C02011/C02021
1	Armor Plate	J101 x 1.275 MM (0.050 INCH) THICKNESS
1	Edge Guard (@ Wood Doors)	J208M / J211 (VERIFY), CUT: HARDWARE
1	Threshold	J32300 x 57 MM WIDTH (2-1/4 INCHES)
1	Auto Door Bottom	R0Y346 – HEAVY DUTY
2	Sets Self-Adhesive Seals	R0Y154
1	Alarm Contact	
120VAC POWER, CONDUIT, AND WIRING BY DIVISION 26.		
CARD READER BY DIVISION 28.		

--- E N D ---