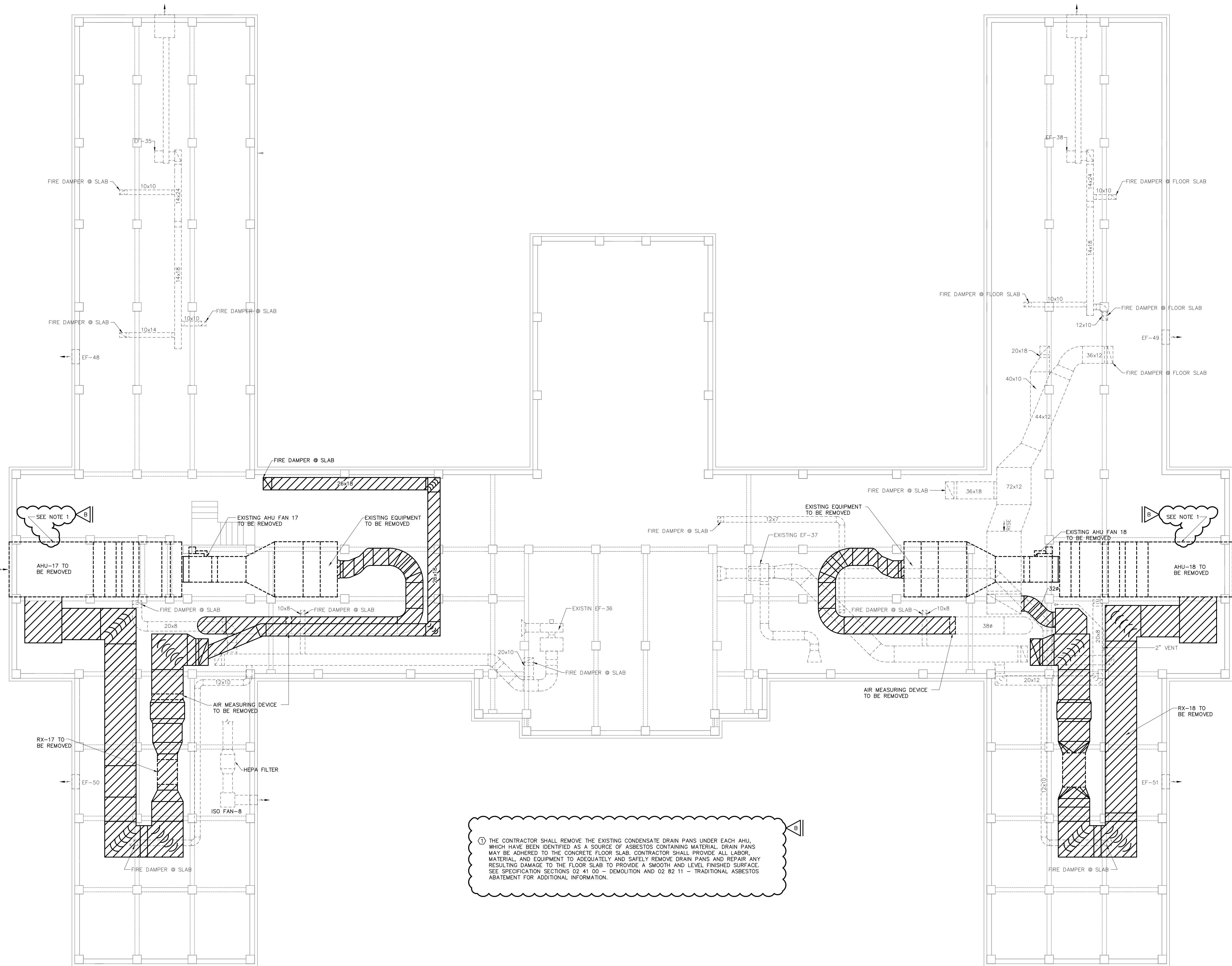
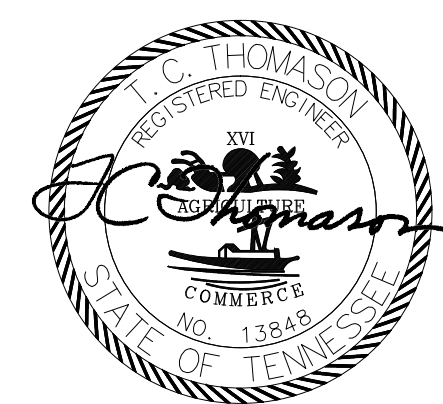


three inches = one foot
one and one-half inches = one foot
one inch = one foot
three-quarters inch = one foot
one-half inch = one foot
three-eighths inch = one foot
one-quarter inch = one foot
one-eighth inch = one foot



ATTIC FLOOR PLAN
MECHANICAL - DEMOLITION
0 2 4 6 8 16
GRAPHIC SCALE (FEET)



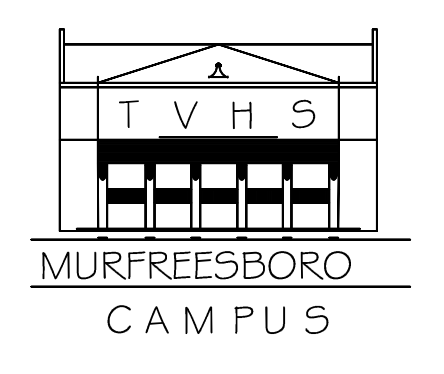
CONSTRUCTION DOCUMENTS

REVISION B - ADDENDUM NO. 2 - 4/27/12
REVISION A - ADDENDUM NO. 1 - 3/21/12

Revisions	Date



Tennessee Valley Healthcare System



TENNESSEE VALLEY HEALTHCARE SYSTEM MURFREESBORO CAMPUS	Drawing Title DEMOLITION FLOOR PLAN		Project Title REPLACE ATTIC AHU'S BUILDING 6		Date 01/20/2012
	Approved: --	Approved: Facility Manager	Building Number 6	Checked TCT	Drawn SVP
Approved: --	Approved: Director	Location TVHS - YORK CAMPUS	DRAWING NO. 6-M2		FILE NAME 11027M01

Veterans
Administration