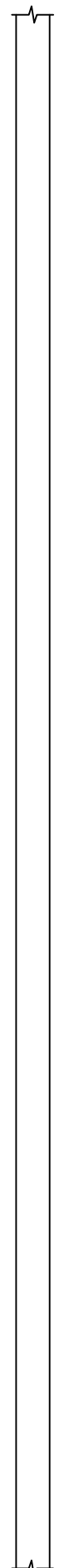
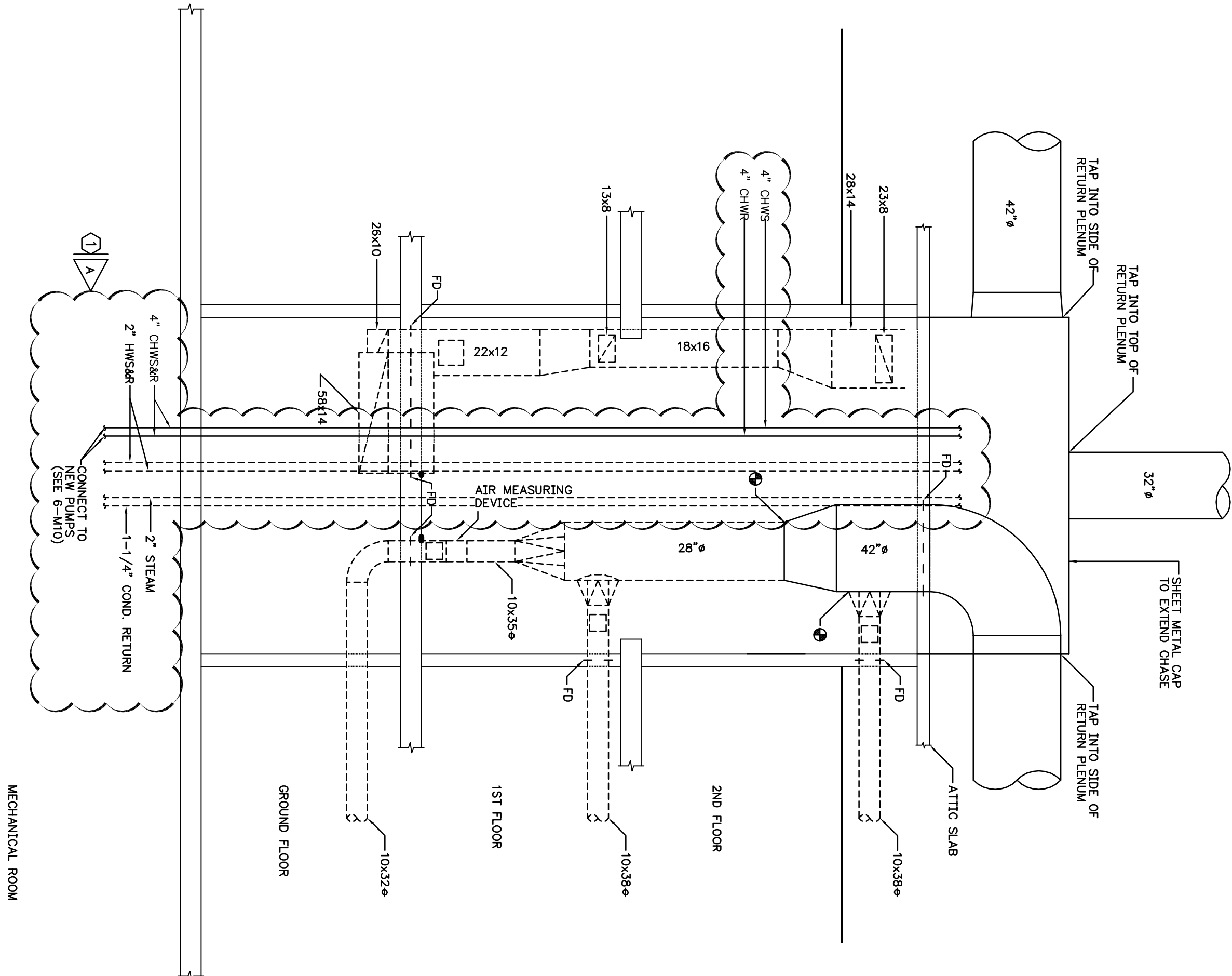


DRAWING NOTES:

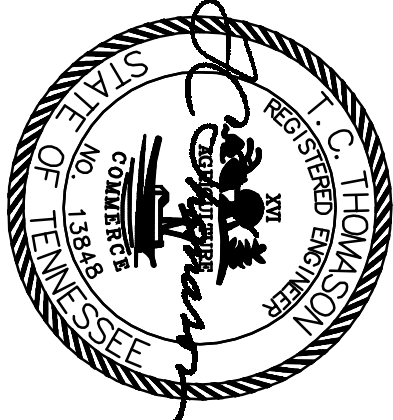
1. INSTALL NEW CHILLED WATER SUPPLY AND RETURN PIPING AND INSULATE. REINSULATE HOT WATER SUPPLY AND RETURN PIPING, STEAM PIPING AND CONDENSATE RETURN PIPING PER SPECIFICATION SECTION 23 07 11.

AHU - 17 RISER
MECHANICAL - NEW WORK
GRAPHIC SCALE (FEET)



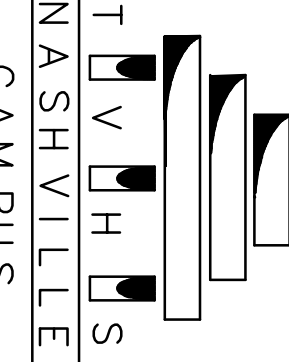
AHU - 18 RISER
MECHANICAL - NEW WORK
GRAPHIC SCALE (FEET)

CONSTRUCTION DOCUMENTS

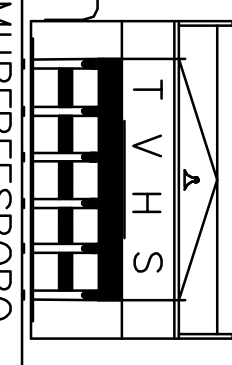


REVISION A - APPENDUM NO. 2 - 4/27/12

Revisions	Date



Tennessee Valley Healthcare System
NASHVILLE
CAMPU S



MURREESBORO
CAMPU S

TENNESSEE VALLEY HEALTHCARE SYSTEM MURREESBORO CAMPUS		Drawing Title MECHANICAL RISER NEW WORK		Project Title REPLACE ATTIC AHUS BUILDING 6		Date 01/20/2012
Approved: --		Approved: Facility Manager		Building Number 6	Checked TCL	Drawn SP
Approved: --		Approved: Director		Location TWIS - YORK CAMPUS		
				Project No. 62644-11-204	DRAWING NO. 6-M9	
				FILE NAME M27M2		