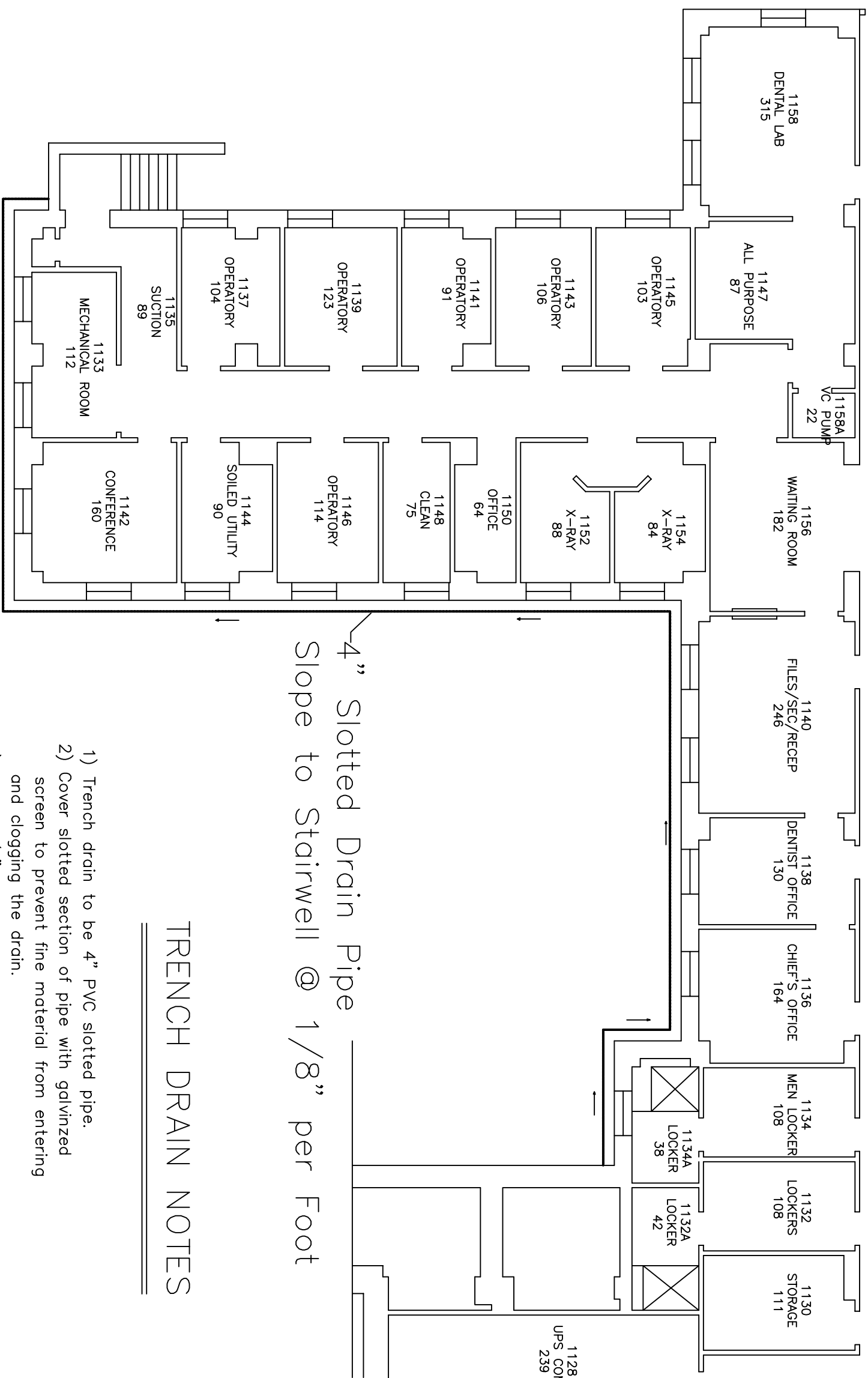


AREA OF EXCAVATION  
Not to Scale



#### EXCAVATION NOTES

- 1) Excavate to bottom of building wall, approx. 7'.
- 2) Backslope side of ditch per OSHA Trenching guidelines.
- 3) Exterior wall of building to be cleaned using high pressure water blast to remove all dirt and loose material.
- 4) Exterior of wall to be coated with bituminous dampproofing per specification 071113.
- 5) After inspection by COTR, place compacted backfill to level for gravel fill for trench drain.
- 6) Install 3' wide 4" thick mow strip at ground level.
- 7) Caulk joint between mow strip and fill with elastomeric caulk per specifications 079200.
- 8) Pine tree is to remain, protect as needed from damage.



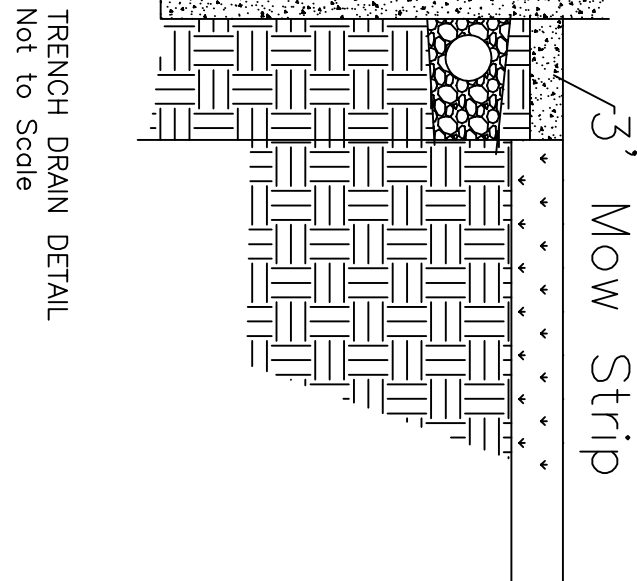
TRENCH DRAIN  
Not to Scale

#### TRENCH DRAIN NOTES

- 1) Trench drain to be 4" PVC slotted pipe.
- 2) Cover slotted section of pipe with galvanized screen to prevent fine material from entering and clogging the drain.
- 3) Place 3/4" gravel to bed pipe and to cover pipe a minimum of 6".
- 4) Drain line is to slope a minimum of 1/8" per foot to stairwell on South side.
- 5) Penetrate wall of stairwell to allow pipe to drain.
- 6) Cover end of pipe with a mesh screen to prevent animal intrusion that might prevent drainage.
- 7) See trench drain detail below.

#### GENERAL NOTES

- 1) DAVIS/BACON WAGE RATES TO APPLY.
- 2) CONTRACTOR TO FIELD VERIFY ALL DIMENSIONS.
- 3) CONTRACTOR IS TO REPAIR ALL DAMAGE TO LAWNS THAT IS INCURRED DURING THE PROJECT.
- 4) VERIFY LOCATION OF LAWN SPRINKLER HEADS WITH VA GROUNDS PERSONNEL PRIOR TO START OF WORK.
- 5) SOME WORK IS IN A PATIENT CARE SETTING. PROVIDE PROTECTION AS NECESSARY.



## BUILDING 1 FIRST FLOOR

Revisions	Date

Drawing Title	Project Title	Date
FIRST FLOOR	REPAIR DENTAL WATER INTRUSION	3/7/11
Approved: Division Chief	Building Number 1	Project No.
Approved: Service Director	Location AMARILLO, TEXAS	Drawing No.