

1. PRIOR TO SUBMITTING PROPOSALS, BIDDERS SHALL EXAMINE DRAWINGS AND SPECIFICATIONS AND CONDUCT A PERSONAL EXAMINATION OF THE SITE AND BECOME AWARE OF ALL EXISTING CONDITIONS AND LIMITATIONS AFFECTING THE WORK AND THEIR PROPOSAL.

- DEMOLITION KEYED NOTES

D-1	REMOVE EXISTING LAVATORY/SINK AND ASSOCIATED SANITARY, VENT, AND WATER PIPING. REFER TO BASEMENT DEMOLITION FLOOR PLAN FOR CONTINUATION.
D-2	REMOVE EXISTING OXYGEN WALL OUTLET AND PIPING DOWNSTREAM FROM POINT OF DISCONNECTION.
D-3	REMOVE EXISTING FLOOR DRAIN. ASSOCIATED SANITARY AND VENT PIPING SHALL REMAIN AS IS.
D-4	REMOVE EXISTING COLD WATER STUB UP AND FILTER PIPING. CAP PIPING IN BASEMENT/CRAWL SPACE.



**Office of
Construction
and Facilities
Management**

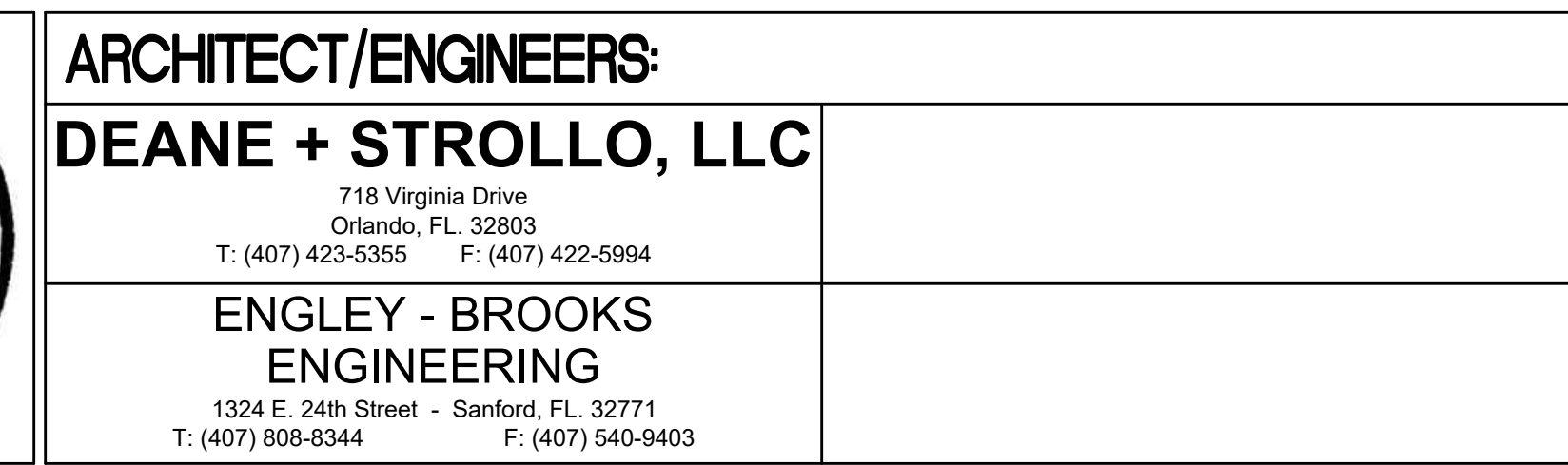


3/8" = 1'-0"


Revisions:

VA FORM 08-6231

	CONSULTANTS:



Project Title		
SITE PREP FOR LINEAR ACCELERATOR		
Location		
1201 NW 16th ST, MIAMI, FL		
Date	Checked	Drawn
NOVEMBER 18, 2016	BE	TC

Project Number 546-C81-110	Office of Construction and Facilities Management  Department of Veterans Affairs
Building Number 1	
Drawing Number PD101 -Deg. of 38	

GENERAL PLAN NOTES

1. ALL EXISTING CONSTRUCTION WHICH IS DISTURBED DURING NEW CONSTRUCTION SHALL BE REPAIRED AS REQUIRED TO MATCH ADJACENT MATERIALS FOLLOWING COMPLETION OF NEW CONSTRUCTION. THE WORK SITE SHALL REMAIN IN THE SAME, AND/OR IMPROVED CONDITION AS THAT PRIOR TO PROCEEDING WITH CONSTRUCTION.
2. ALL FLOORS SHALL SLOPE TO FLOOR DRAINS FOR POSITIVE DRAINAGE. COORDINATE WITH ARCHITECTURAL DRAWINGS.
3. REFER TO ARCHITECTURAL PLANS FOR PATCHING AND REPAIRING EXISTING FLOOR AT REMOVED SANITARY LINES.
4. ALL MEDICAL GAS PIPING WORK SHALL BE IN ACCORDANCE WITH NFPA 99 HEALTH CARE FACILITIES CODE, LATEST EDITION.

NEW KEYED NOTES

- ① CONNECT NEW PIPING TO EXISTING PIPING AS SHOWN. PROVIDE SHUT OFF VALVE.
- ② CONNECT NEW PIPING TO EXISTING PIPING.
- ③ CONNECT TO EXISTING PIPING AND PROVIDE SHUT-OFF VALVE AND CAP.



1
PL100

$$\frac{3}{8}'' = 1'-0''$$


NOTES

**Office of
Construction
and Facilities
Management**



CONSTRUCTION DOCUMENT FINAL SUBMISSION

[illegible]

CONSULTANTS:



ARCHITECT/ENGINEERS:
DEANE + STROLLO, LLC

718 Virginia Drive
Orlando, FL. 32803
T: (407) 423-5355 F: (407) 422-5994

**ENGLEY - BROOKS
ENGINEERING**

1324 E. 24th Street - Sanford, FL. 32771
T: (407) 808-8344 F: (407) 540-9403

	Drawing Title
--	----------------------

**PARTIAL BASEMENT-CRAWL
SPACE FLOOR PLAN - NEW
PLUMBING**

Approved: Project Director

	Project Title
--	----------------------

SITE PREP FOR LINEAR ACCELERATOR

	Location

1201 NW 16th ST, MIAMI

AMI, FL☒ Checked

Drawn

	Project Number
--	----------------

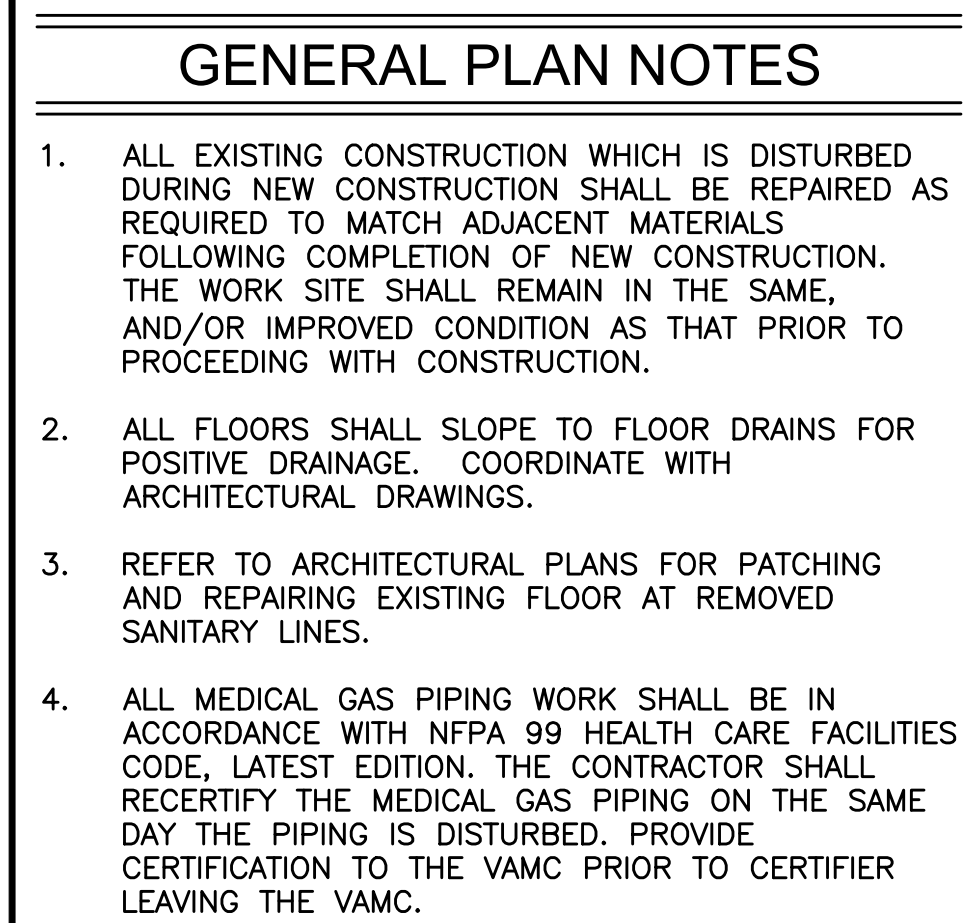
546-C91-110

Building Number

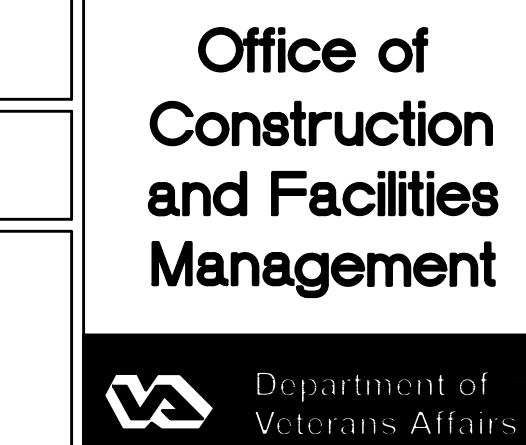
Drawing Number

PL100

-Dwg. of 38



- 1 PROVIDE NEW SINK. CONNECT TO EXISTING SANITARY PIPING AND COLD/HOT WATER PIPING IN BASEMENT AND VENT PIPING ABOVE CEILING. PROVIDE NEW STOPS, RISERS, P-TRAP, WASTE PIPING, AND ESCUTCHEONS. REFER TO BASEMENT FLOOR PLAN, SCHEDULES, AND SPECIFICATIONS.
- 2 CONNECT NEW 2" V TO EXISTING 2" VTR.
- 3 CONNECT NEW 1/2"x2" TO NEW OUTLET.
- 4 CONNECT TO EXISTING WASTE PIPING.
- 5 LOCATE ROOF PENETRATION NEAR CHILLED WATER PIPING PENETRATIONS. COORDINATE WITH MECHANICAL CONTRACTOR.
- 6 CONNECT NEW OXYGEN PIPING TO EXISTING PIPING. REFER TO SPECIFICATIONS FOR REQUIREMENTS.
- 7 PROVIDE NEW SHUT-OFF VALVE. INSTALL ABOVE LAY-IN CEILING. COORDINATE LOCATION WITH ALL TRADES.

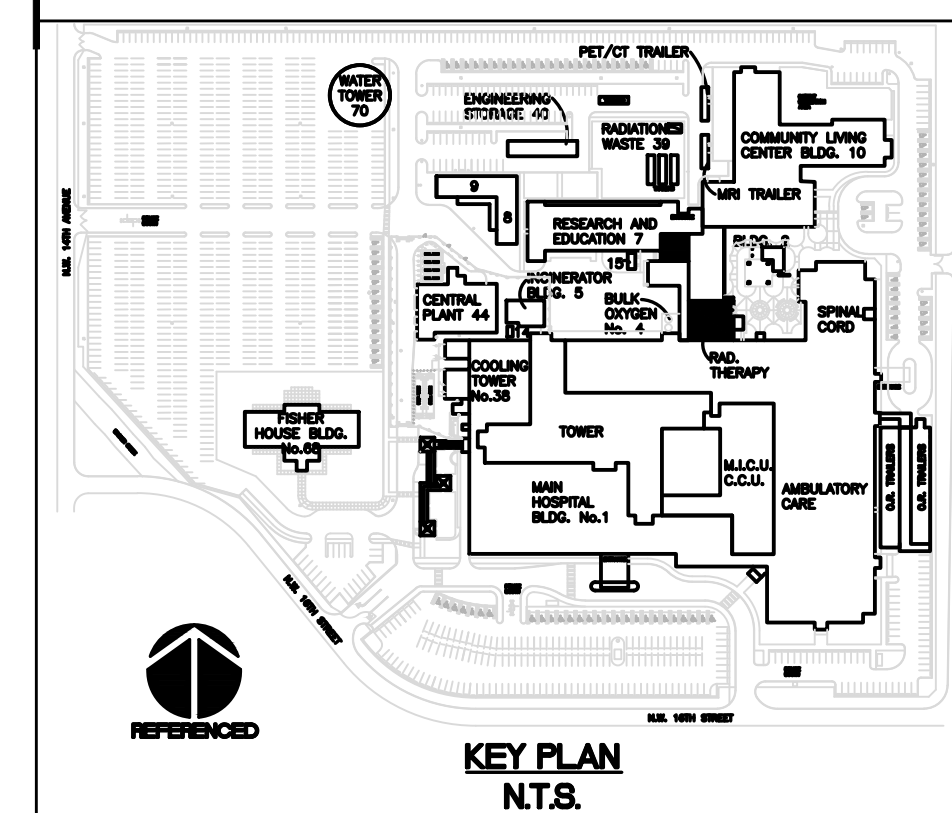
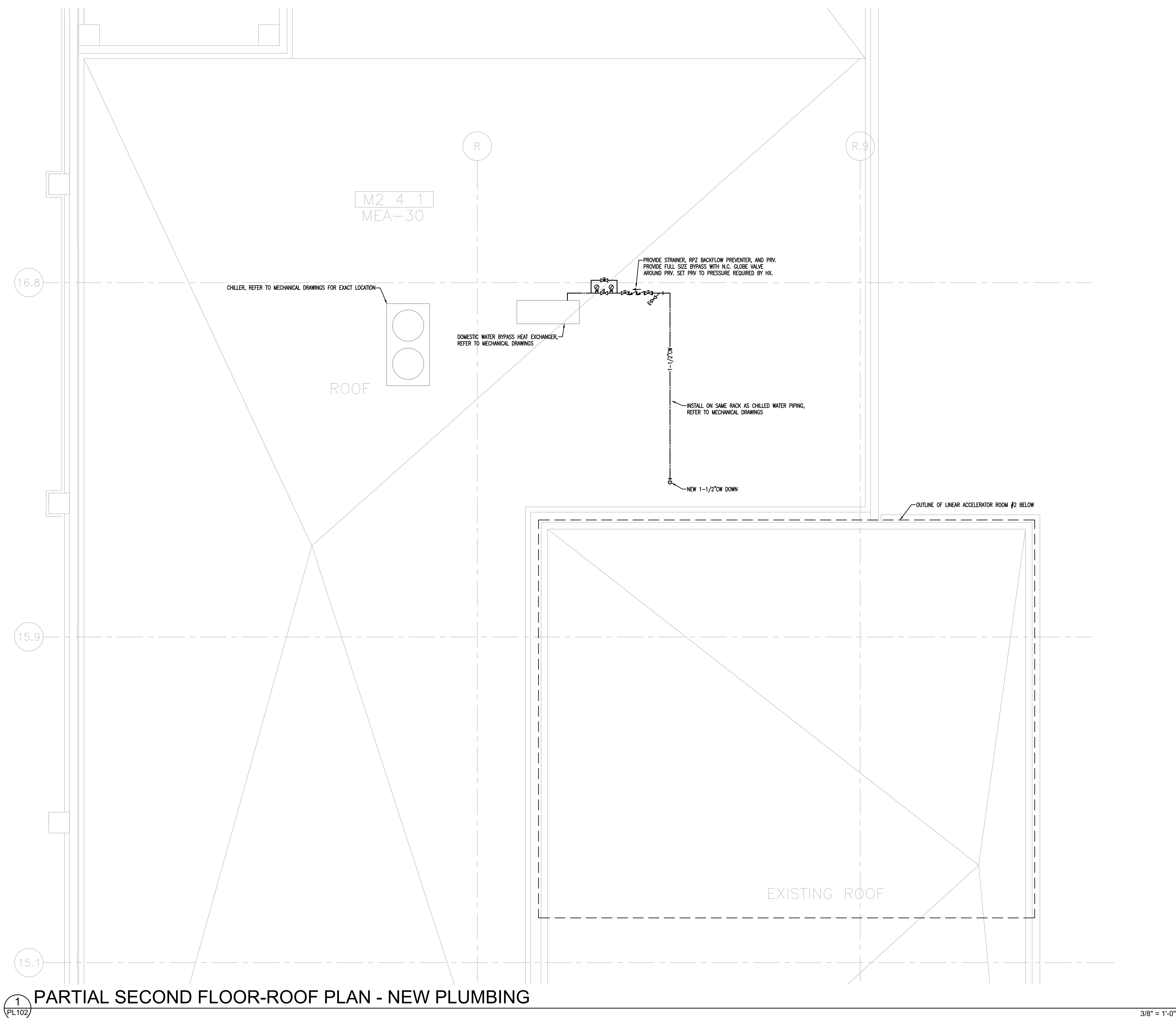


CONSTRUCTION DOCUMENT FINAL SUBMISSION

VA FORM 08-6231

GENERAL PLAN NOTES

1. ALL EXISTING CONSTRUCTION WHICH IS DISTURBED DURING NEW CONSTRUCTION SHALL BE REPAIRED AS NECESSARY TO MATCH ADJACENT MATERIALS. FOLLOWING COMPLETION OF NEW CONSTRUCTION, THE WORK SITE SHALL REMAIN IN THE SAME, AND/OR IMPROVED CONDITION AS THAT PRIOR TO PROCEEDING WITH CONSTRUCTION.
2. ALL FLOORS SHALL SLOPE TO FLOOR DRAINS FOR POSITIVE DRAINAGE. COORDINATE WITH ARCHITECTURAL DRAWINGS.
3. REFER TO ARCHITECTURAL PLANS FOR PATCHING AND REPAIRING EXISTING FLOOR AT REMOVED SANITARY LINES.
4. ALL MEDICAL GAS PIPING WORK SHALL BE IN ACCORDANCE WITH NFPA 99 HEALTH CARE FACILITIES CODE, LATEST EDITION.



CONSTRUCTION DOCUMENT FINAL SUBMISSION

[illegible]

three inches = one foot
one and one half inches = one foot
one inch = one foot
three quarters inch = one foot
one half inch = one foot
three eighths inch = one foot
one quarter inch = one foot
one eighth inch = one foot

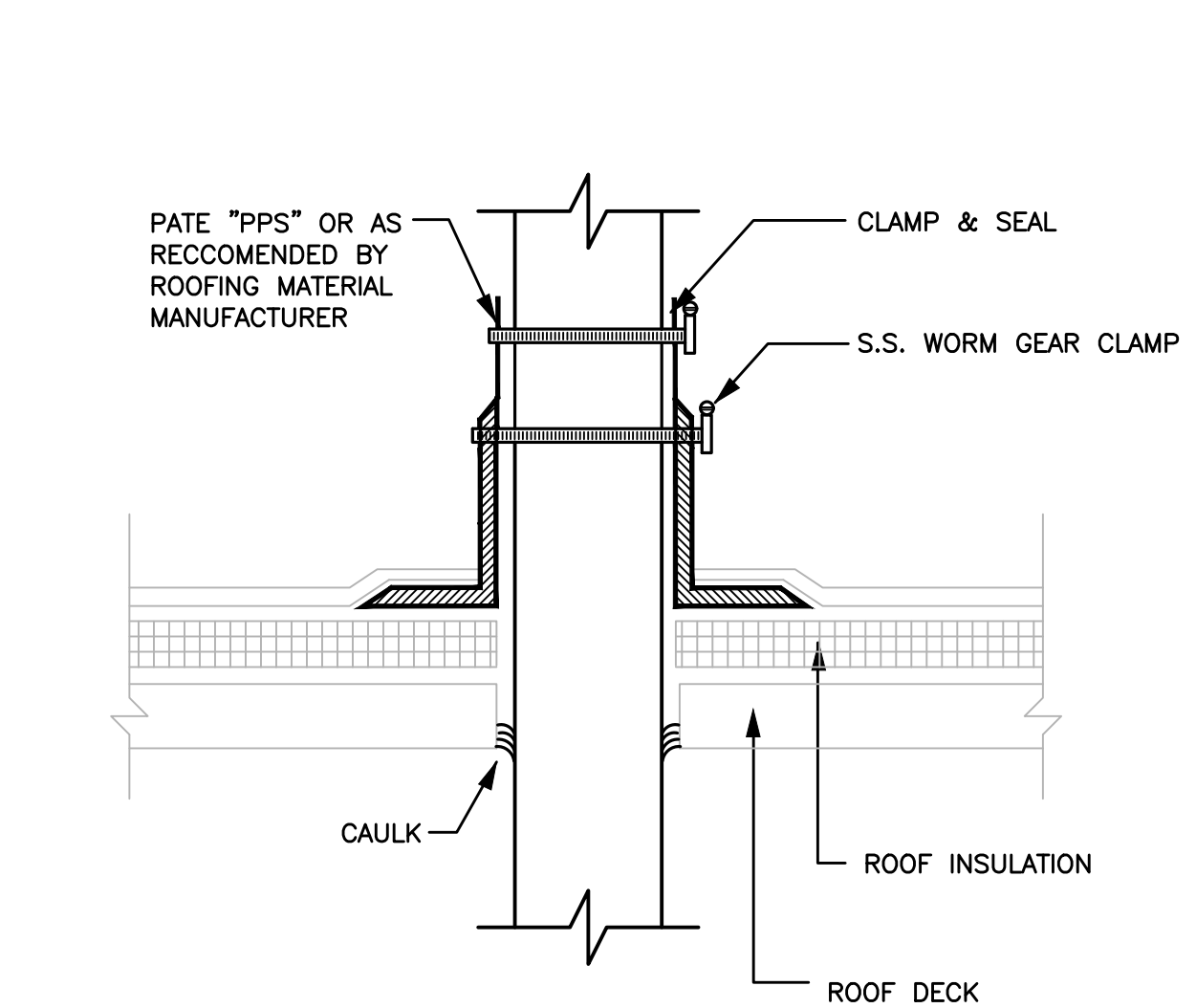
11-18-16 08:52:36 AM Chris

C:\Users\Chris\OneDrive\workplace\EBE\Jobs\2016\VA Miami Linear Accelerator plumbing\PL301 PLUMBING SCHEDULES AND DETAILS.dwg

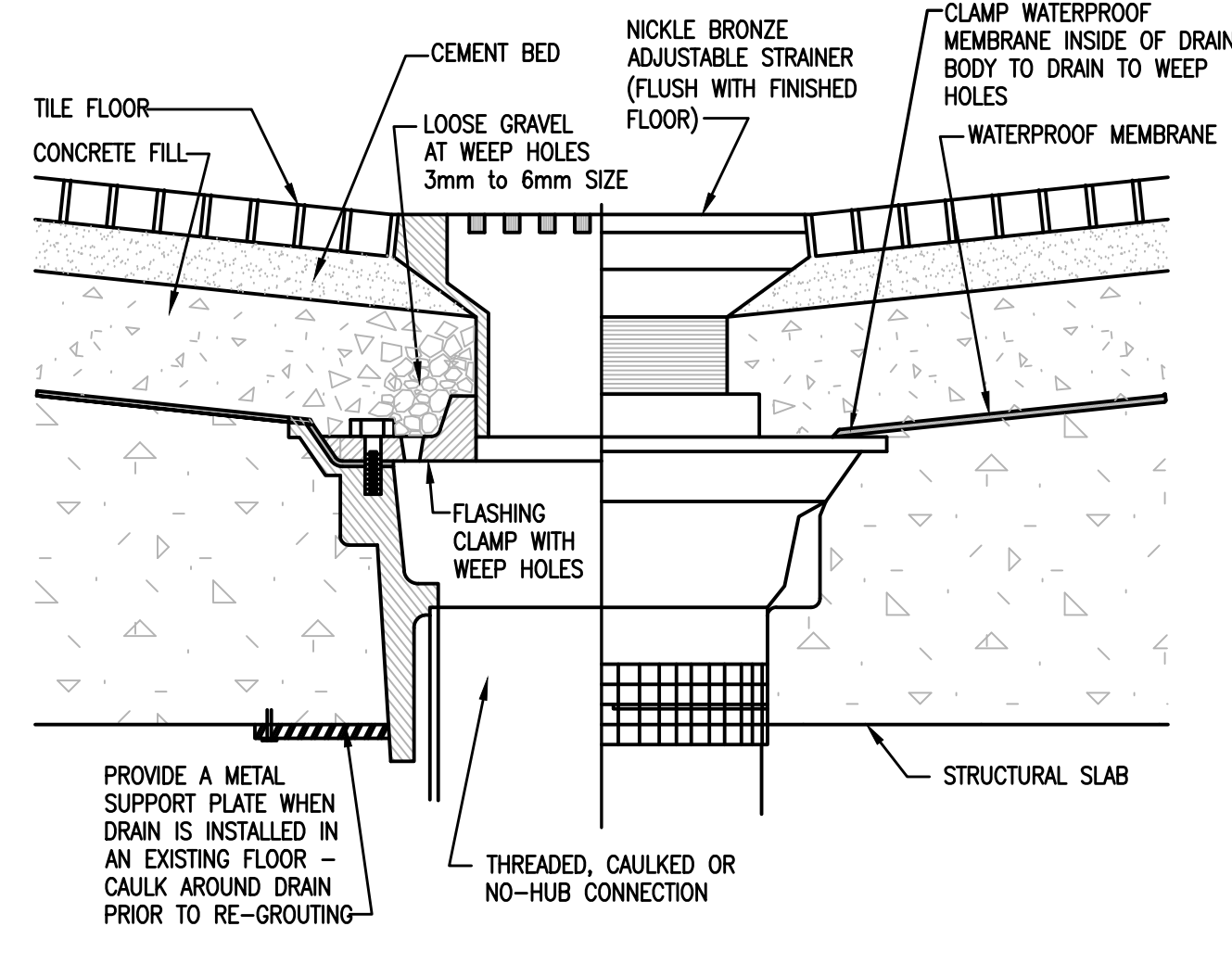
VA FORM 08-6231

PLUMBING EQUIPMENT SCHEDULE				
SYMBOL	DESCRIPTION	MANUFACTURER	MODEL NUMBER	SPECIFICATION
WCO	WALL CLEANOUT	ZURN	Z1446	CLEANOUT TEE, DURA-COATED CAST IRON BODY, GAS AND WATERTIGHT ABS TAPERED THREAD PLUG, AND ROUND, SMOOTH STAINLESS STEEL WALL ACCESS COVER WITH SECURING SCREW.
FD-C	FLOOR SINK	ZURN	ZN415-TP	MEDIUM DUTY (NON-TRAFFIC) FLOOR DRAIN SHALL COMPLY WITH ASME A112.6.3 AND HAVE A CAST IRON BODY, DOUBLE DRAINAGE PATTERN, CLAMPING DEVICE, LIGHT DUTY NICKEL BRONZE ADJUSTABLE STRAINER WITH ROUND OR SQUARE GRATE OF 150 MM (6 INCHES) WIDTH OR DIAMETER MINIMUM.

PLUMBING FIXTURE SCHEDULE								
SYMBOL	DESCRIPTION	MANUFACTURER	MODEL NUMBER	SPECIFICATION	FIXTURE CONNECTIONS			
					CW	HW	WASTE	VENT
P-528	SINK	ELKAY	LRAO LKDA2445BH	CRS, SINGLE COMPARTMENT, COUNTER TOP ASME/ANSI A112.19.2M, KITCHEN SINKS, FIGURE 5, SELF RIMMING, BACK FAUCET LEDGE, APPROXIMATELY 533 MM BY 559 MM (21 INCHES BY 22 INCHES) WITH SINGLE COMPARTMENT INSIDE DIMENSIONS APPROXIMATELY 406 MM BY 483 MM BY 191 MM (16 INCHES BY 19 INCHES BY 7 1/2 INCHES) DEEP, SHALL BE MINIMUM OF 1.3 MM THICK (18 GAUGE) CRS. CORNERS AND EDGES SHALL BE WELL ROUNDED: 1. FAUCET: SOLID BRASS CONSTRUCTION, DECK MOUNTED COMBINATION FAUCET WITH MONEL OR CERAMIC SEATS, REMOVABLE REPLACEMENT UNIT CONTAINING ALL PARTS SUBJECT TO WARE, SWIVEL GOOSENECK SPOUT WITH APPROXIMATELY 203 MM (8 INCHES) REACH WITH SPOUT OUTLET 152 MM (6 INCHES) ABOVE DECK AND 102 MM (4 INCHES) WRIST BLADES WITH HOSE SPRAY. FAUCET SHALL BE POLISHED CHROME PLATED. 2. DRAIN: DRAIN PLUG WITH CUP STRAINER, STAINLESS STEEL. 3. TRAP: CAST COPPER ALLOY 38 MM (1 1/2 INCHES) P-TRAP WITH CLEANOUT PLUG. PROVIDE WALL CONNECTION AND ESCUTCHEON.	1/2"	1/2"	2"	1 1/2"





1 PIPE THROUGH ROOF PENETRATION DETAIL
NTS



NOTE:
SLOPE MEMBRANE LINER 2% TO DRAIN.

2 TYPE 'C' FLOOR DRAIN DETAIL
NTS

CONSTRUCTION DOCUMENT FINAL SUBMISSION

Revisions		Date		CONSULTANTS:				ARCHITECT/ENGINEERS: DEANE + STROLLO, LLC 718 Virginia Drive Orlando, FL 32803 T: (407) 423-5355 F: (407) 422-5994 ENGLEY - BROOKS ENGINEERING 1324 E. 24th Street - Sanford, FL 32771 T: (407) 808-8344 F: (407) 540-9403		Drawing Title PLUMBING SCHEDULES AND DETAILS		Project Title SITE PREP FOR LINEAR ACCELERATOR		Project Number 546-CSI-110		Office of Construction and Facilities Management 			
								Approved Project Director		Location 1201 NW 16th ST, MIAMI, FL.		Building Number 1		Drawing Number PL301					
												Date NOVEMBER 18, 2016		Checked BE		Drawn TC		-Dwg. of 38	