VA FORM 08-6231





DOOR & FRAME TO HAVE 1½ HOUR FIRE RATING- FIRE CAULK PERIMETER

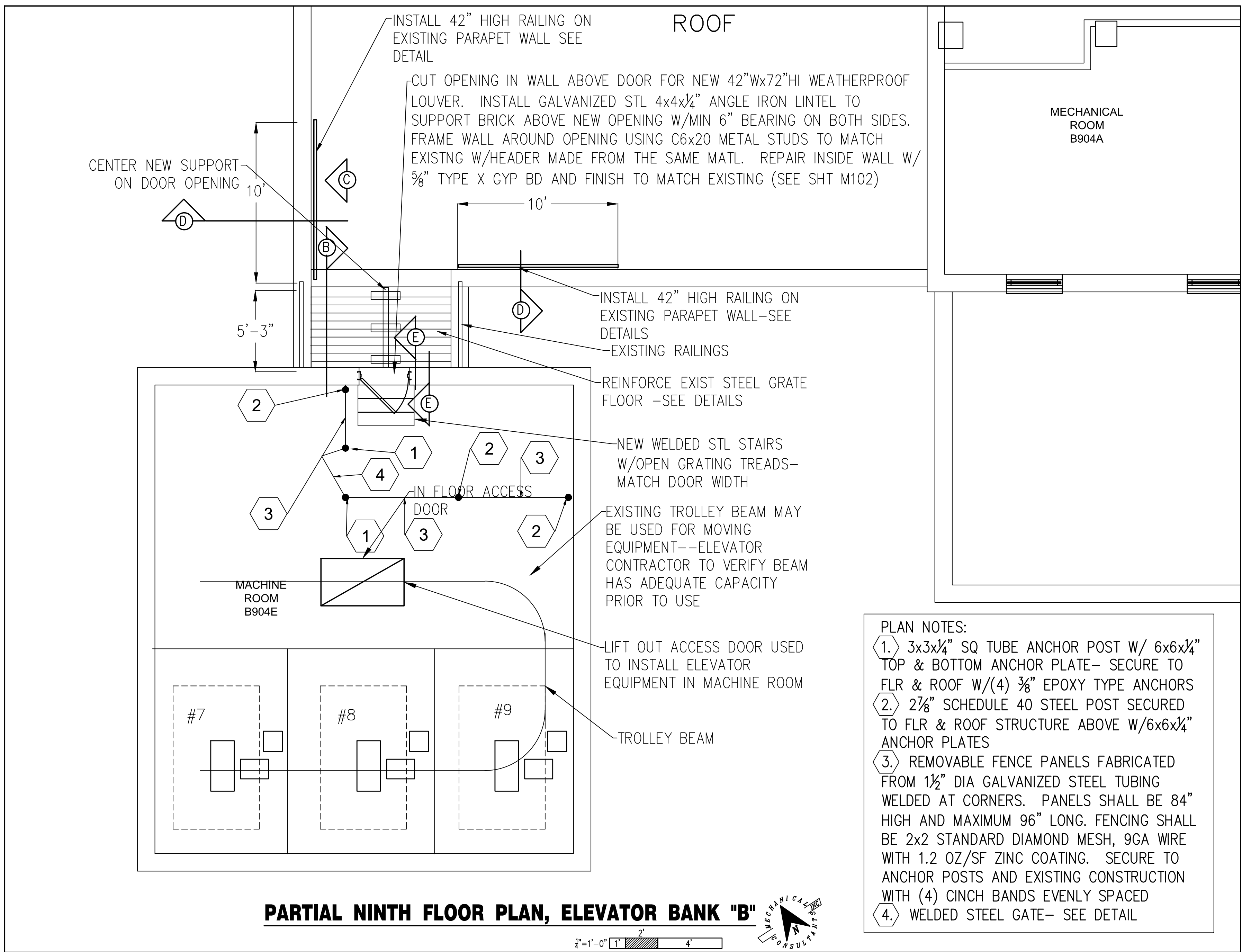
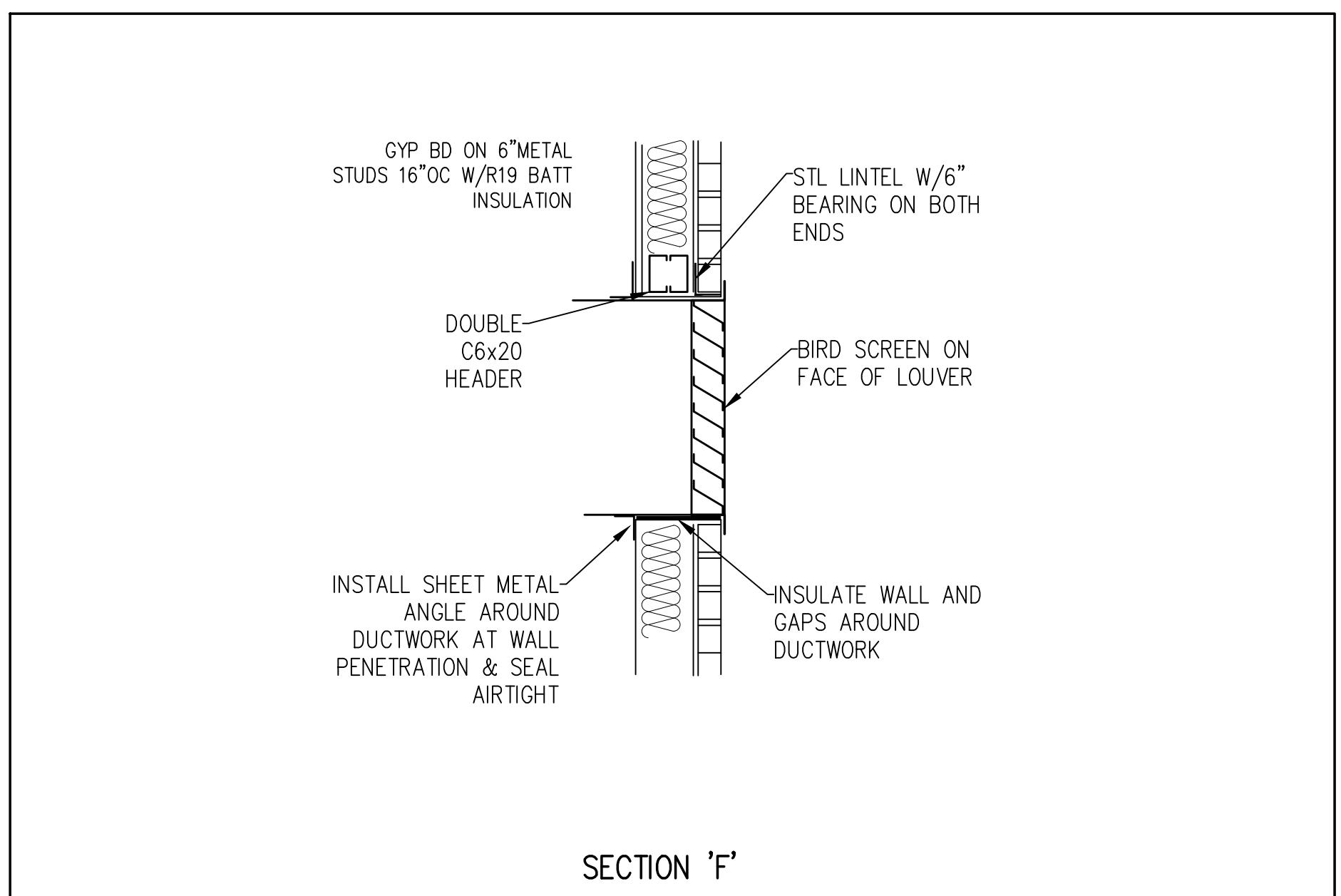
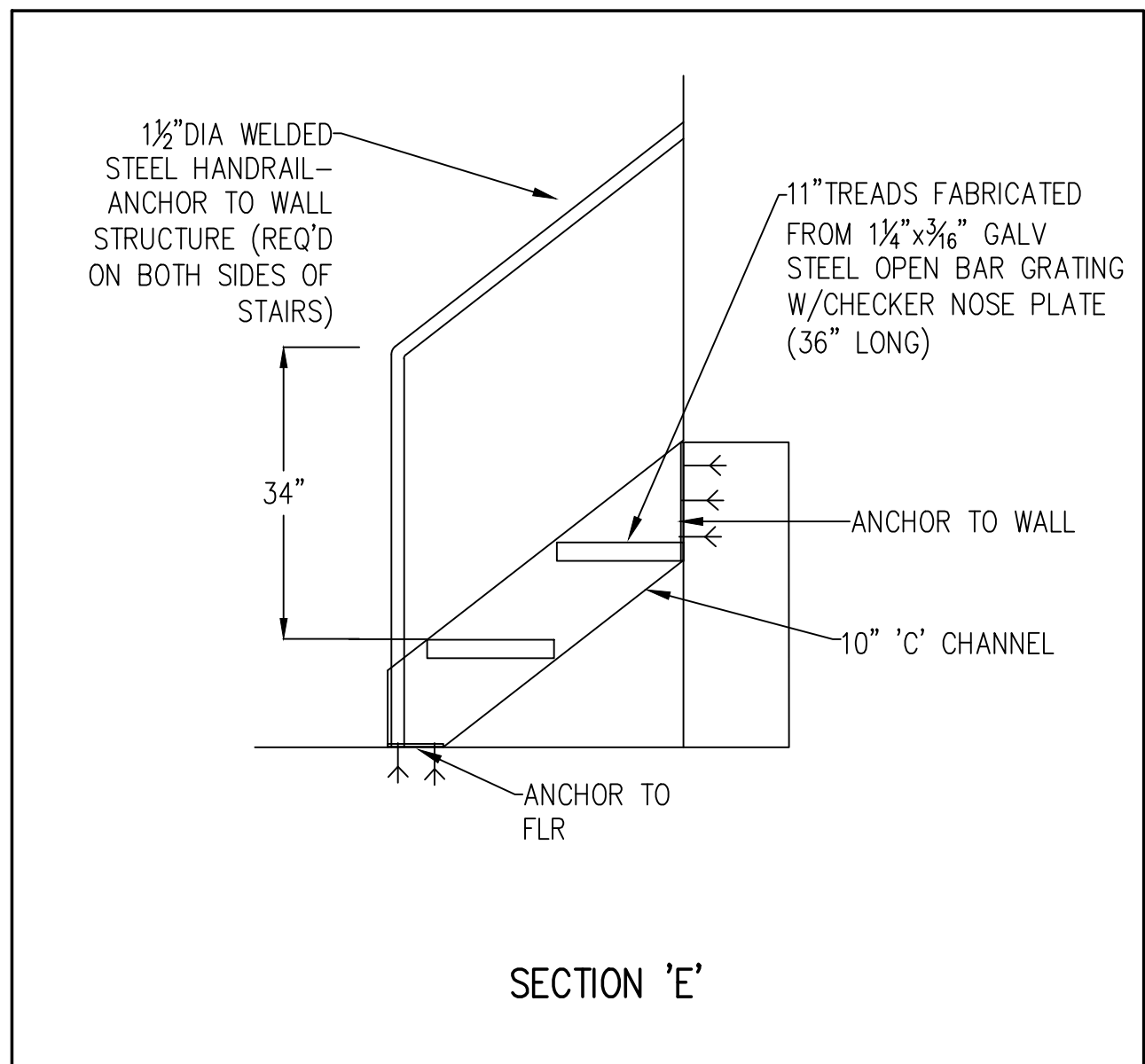
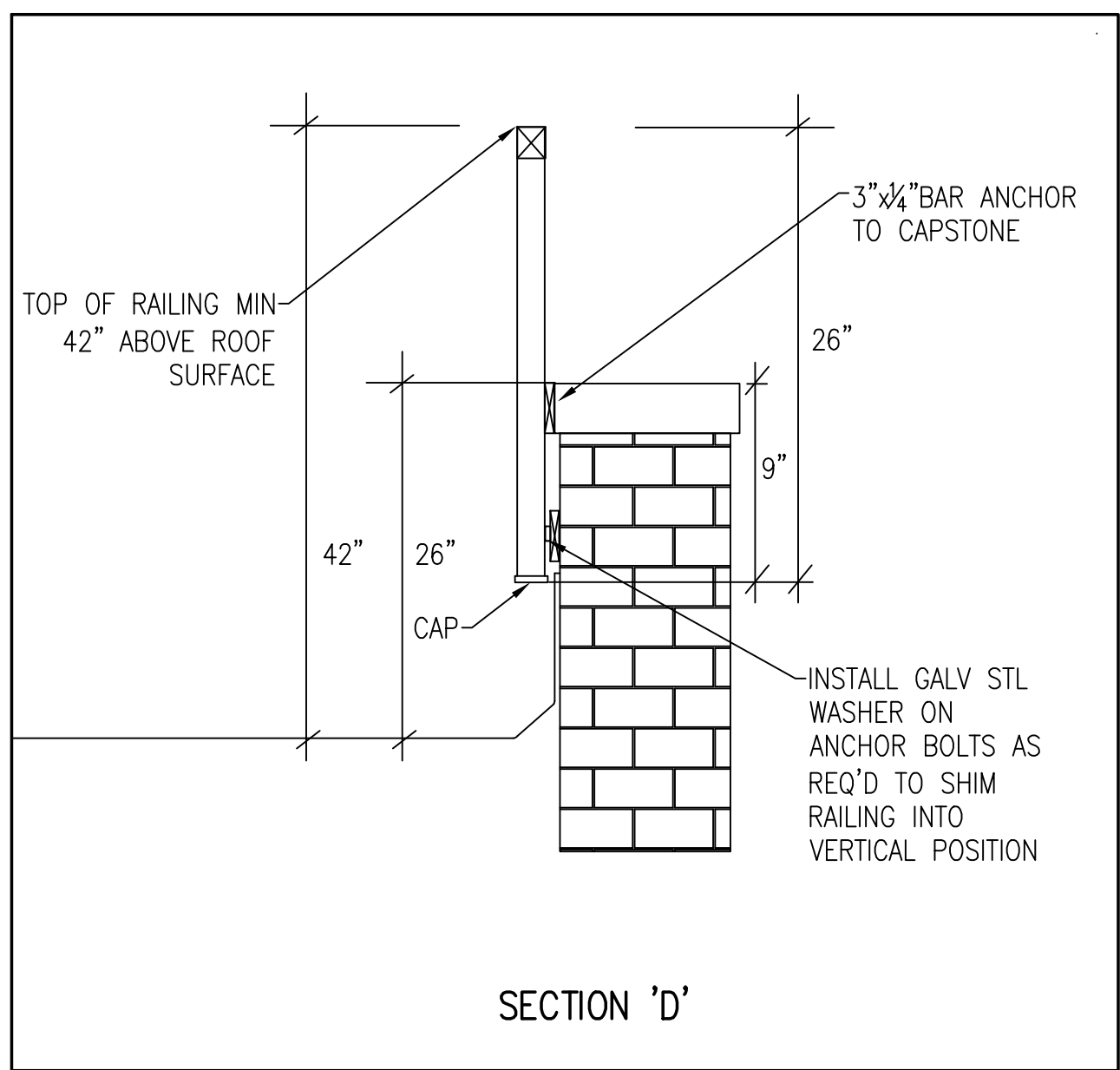
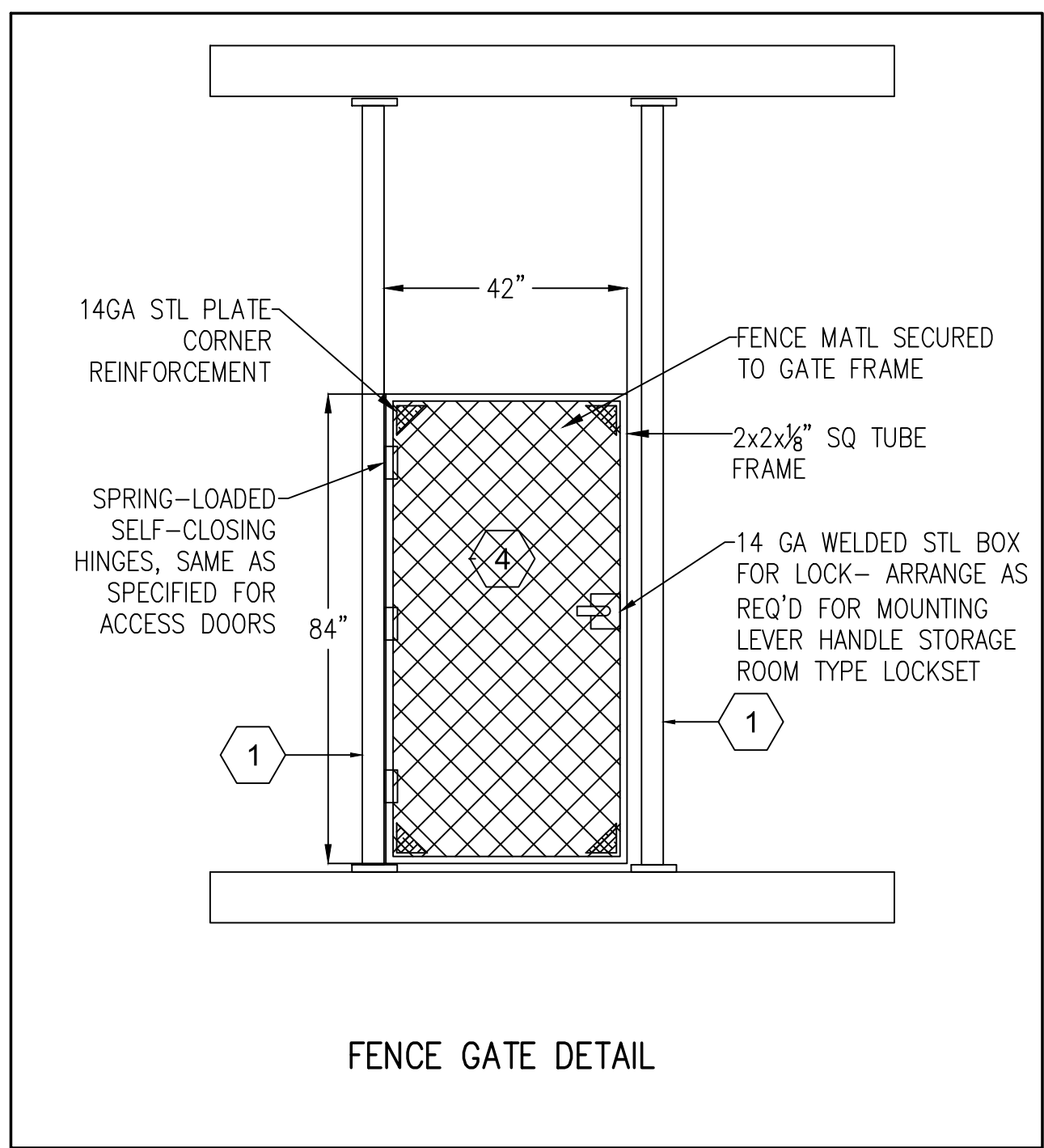
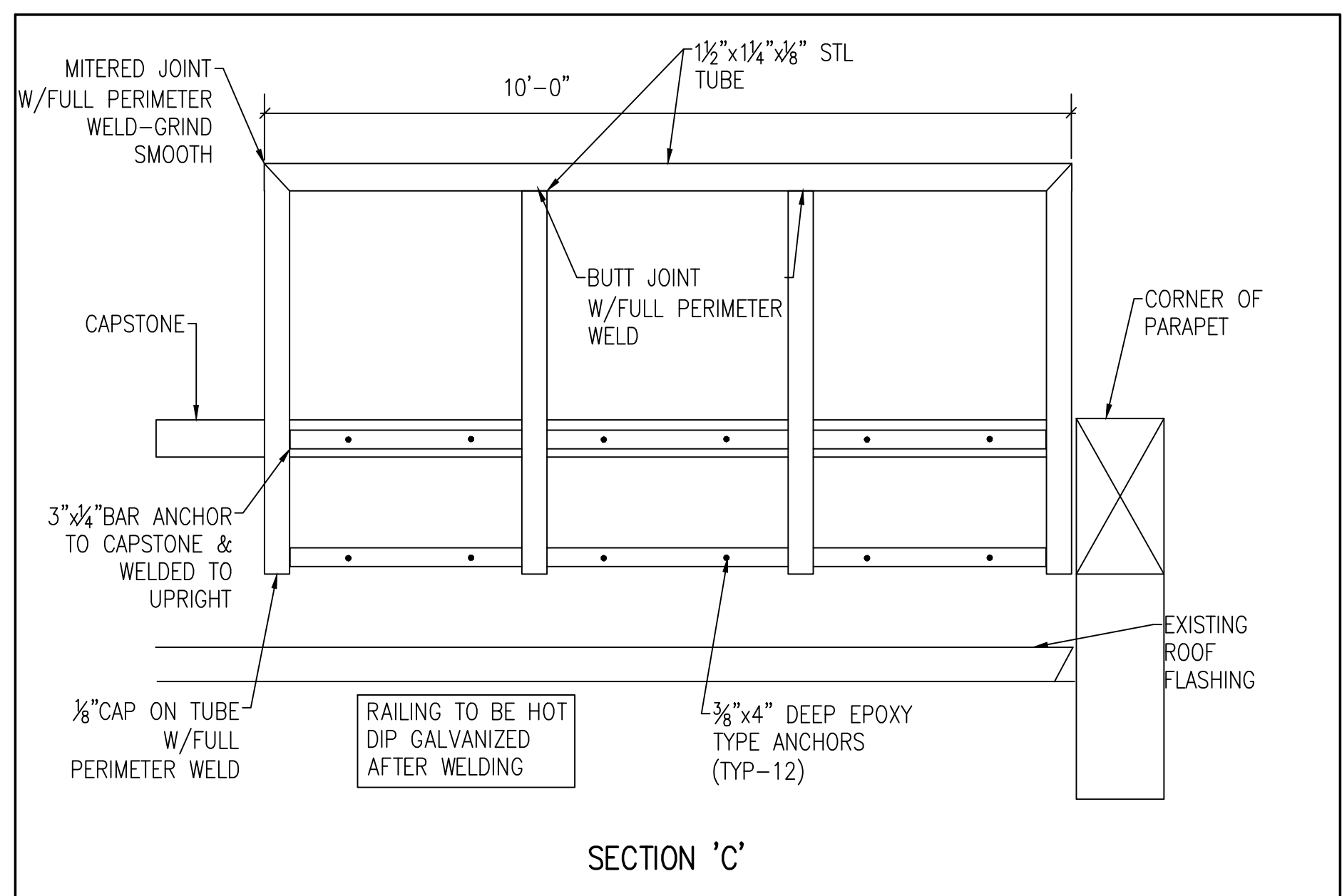
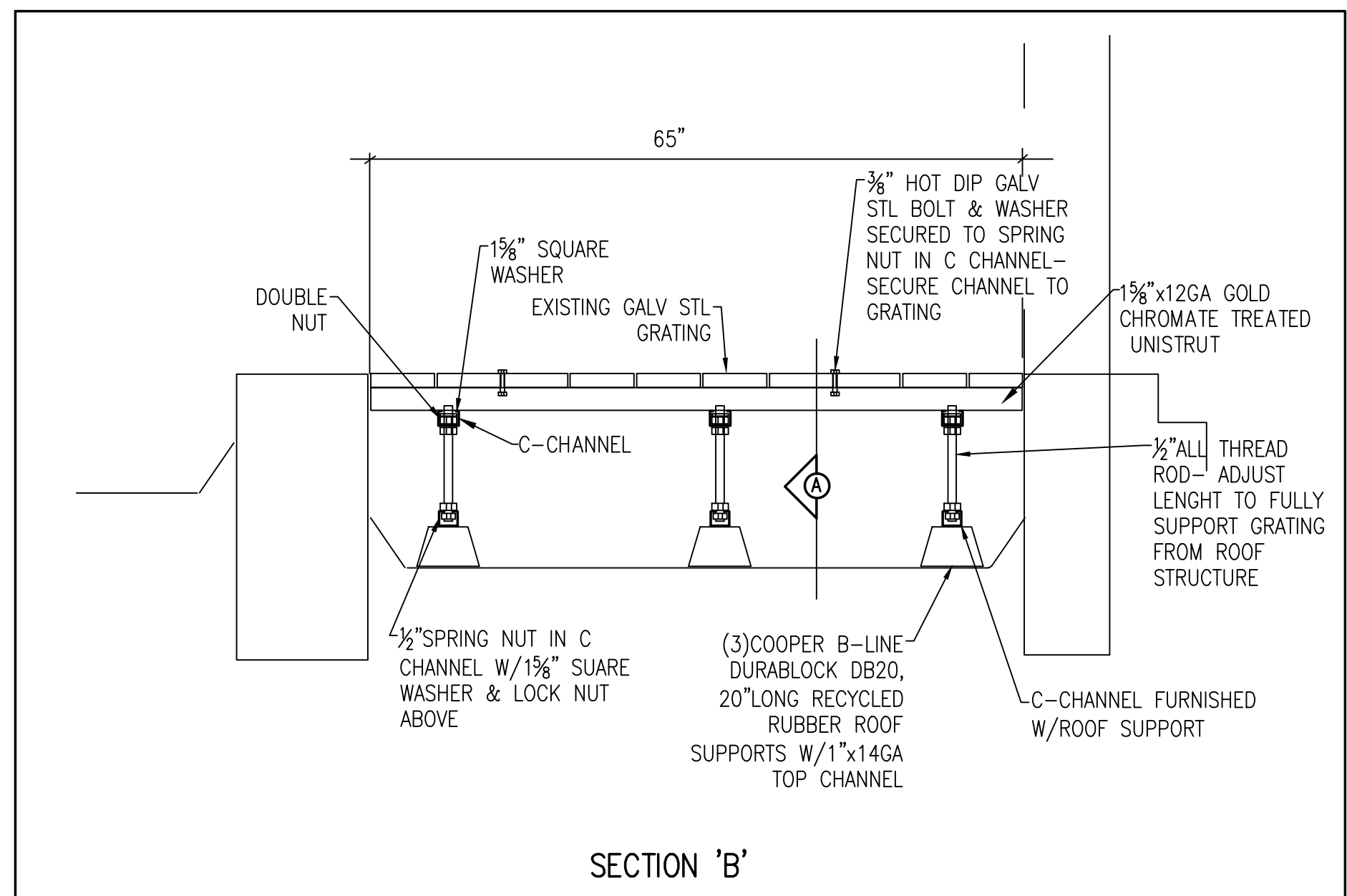
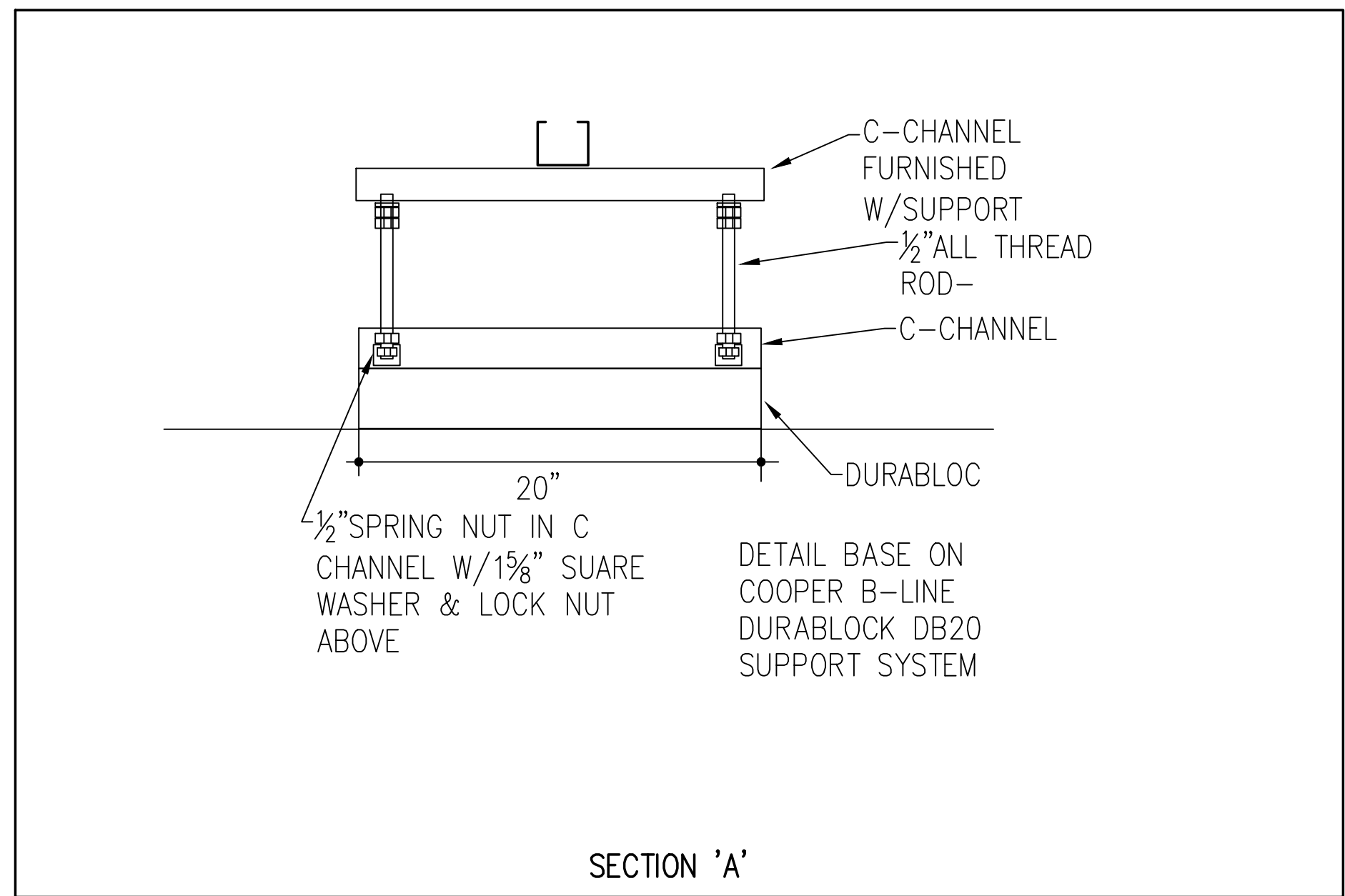
EXISTING ACCESS DOOR & FRAME ARE PAINTED W/LEAD BEARING MATERIALS.  
CONTRACTOR TO CAREFULLY REMOVE THE DOOR & FRAME WITHOUT DISTURBING THE  
PAINT IN A WAY THAT CREATES DUST OR FUMES



## KEY PLAN

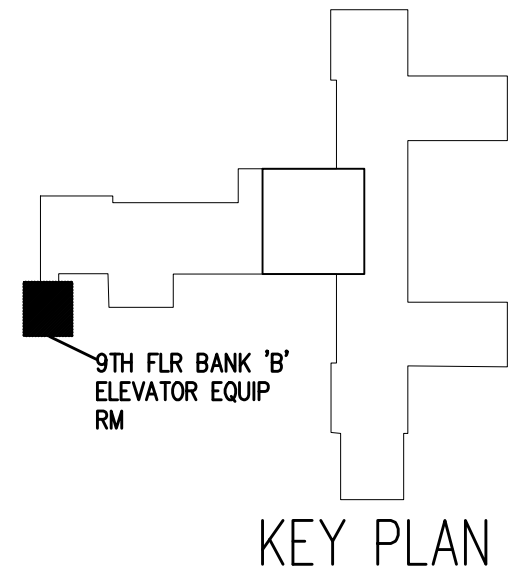
[illegible]

three inches = one foot  
one and one half inches = one foot  
one inch = one foot  
three quarters inch = one foot  
one half inch = one foot  
three eighths inch = one foot  
one quarter inch = one foot  
one eighth inch = one foot



- PLAN NOTES:
1. 3x3x1/4" SQ TUBE ANCHOR POST W/ 6x6x1/4" TOP & BOTTOM ANCHOR PLATE- SECURE TO FLR & ROOF W/(4) 3/8" EPOXY TYPE ANCHORS
  2. 2 1/2" SCHEDULE 40 STEEL POST SECURED TO FLR & ROOF STRUCTURE ABOVE W/6x6x1/4" ANCHOR PLATES
  3. REMOVABLE FENCE PANELS FABRICATED FROM 1 1/2" DIA GALVANIZED STEEL TUBING WELDED AT CORNERS. PANELS SHALL BE 84" HIGH AND MAXIMUM 96" LONG. FENCING SHALL BE 2x2 STANDARD DIAMOND MESH, 9GA WIRE WITH 1.2 OZ/SF ZINC COATING. SECURE TO ANCHOR POSTS AND EXISTING CONSTRUCTION WITH (4) CINCH BANDS EVENLY SPACED
  4. WELDED STEEL GATE- SEE DETAIL

NOTE: ALL METAL FABRICATIONS IN THE MACHINE ROOM TO BE PAINTED.  
ALL EXTERIOR METAL FABRICATIONS TO BE GALVANIZED.



CONSULTANTS:		ARCHITECT/ENGINEERS:		Drawing Title		Project Title		Project Number		Department of Veterans Affairs	
VAN DEUSEN and ASSOCIATES, VERTICAL TRANSPORTATION CONSULTANTS		DUDLEY WILLIAMS and ASSOCIATES, PA JOHNSON ENGINEERING		PARTIAL NINTH FLOOR PLAN, ELEVATOR BANK "B"		REPLACE MECHANICAL CONTROLS and UPGRADE CABS, MAIN ELEVATORS		657-15-200JC		Medical Center	
Revisions		Date		Approved Project Director		Location		Building Number		John Cochran Division	
						VAMC - ST. LOUIS, MISSOURI - JC		01		Division	
						Date		Checked		100% REVIEW SET	
						OCTOBER 25, 2016		BP		1-A110	
								Drawn		Dwg. 13 of 23	
								JM		Department of Veterans Affairs	