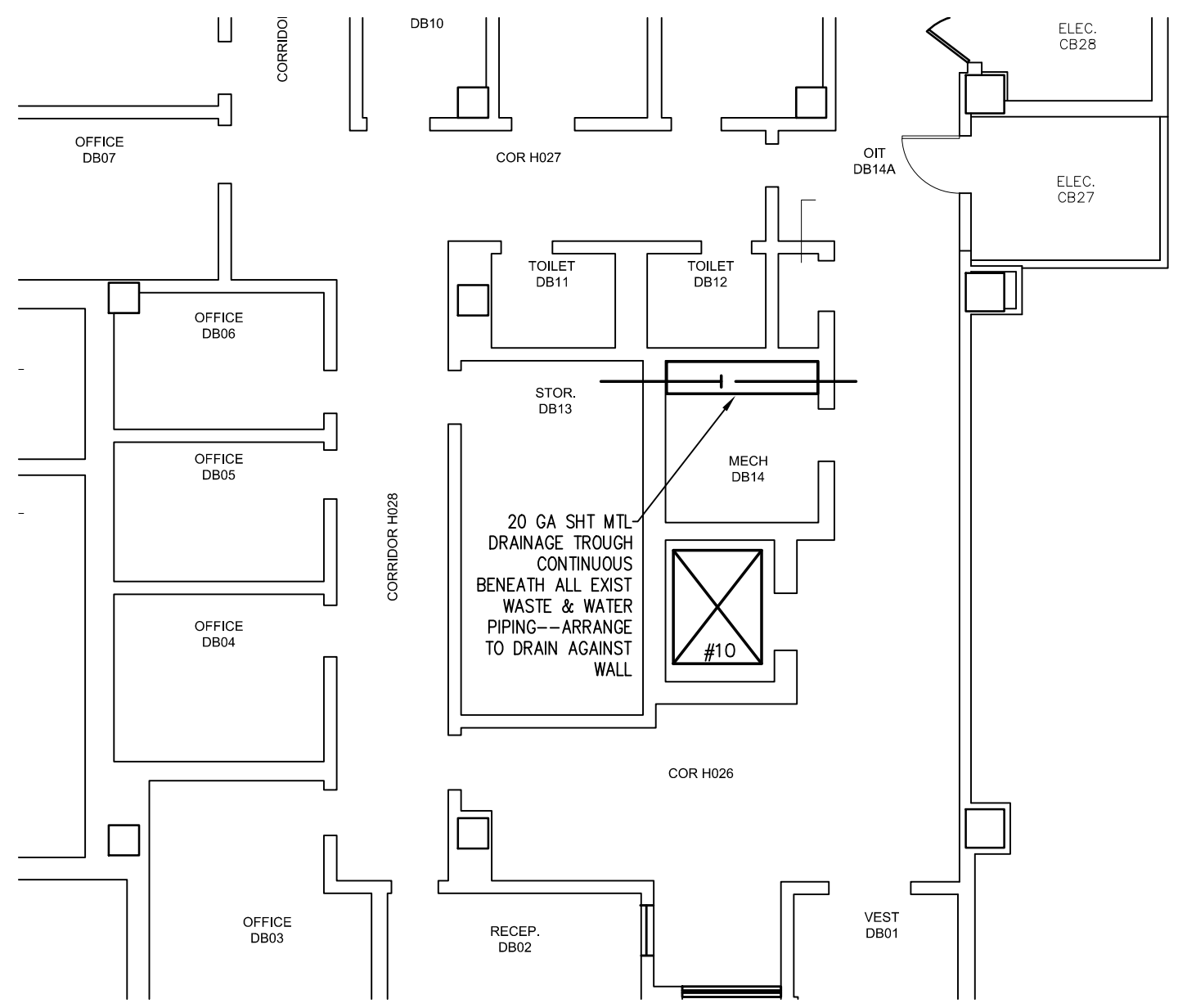
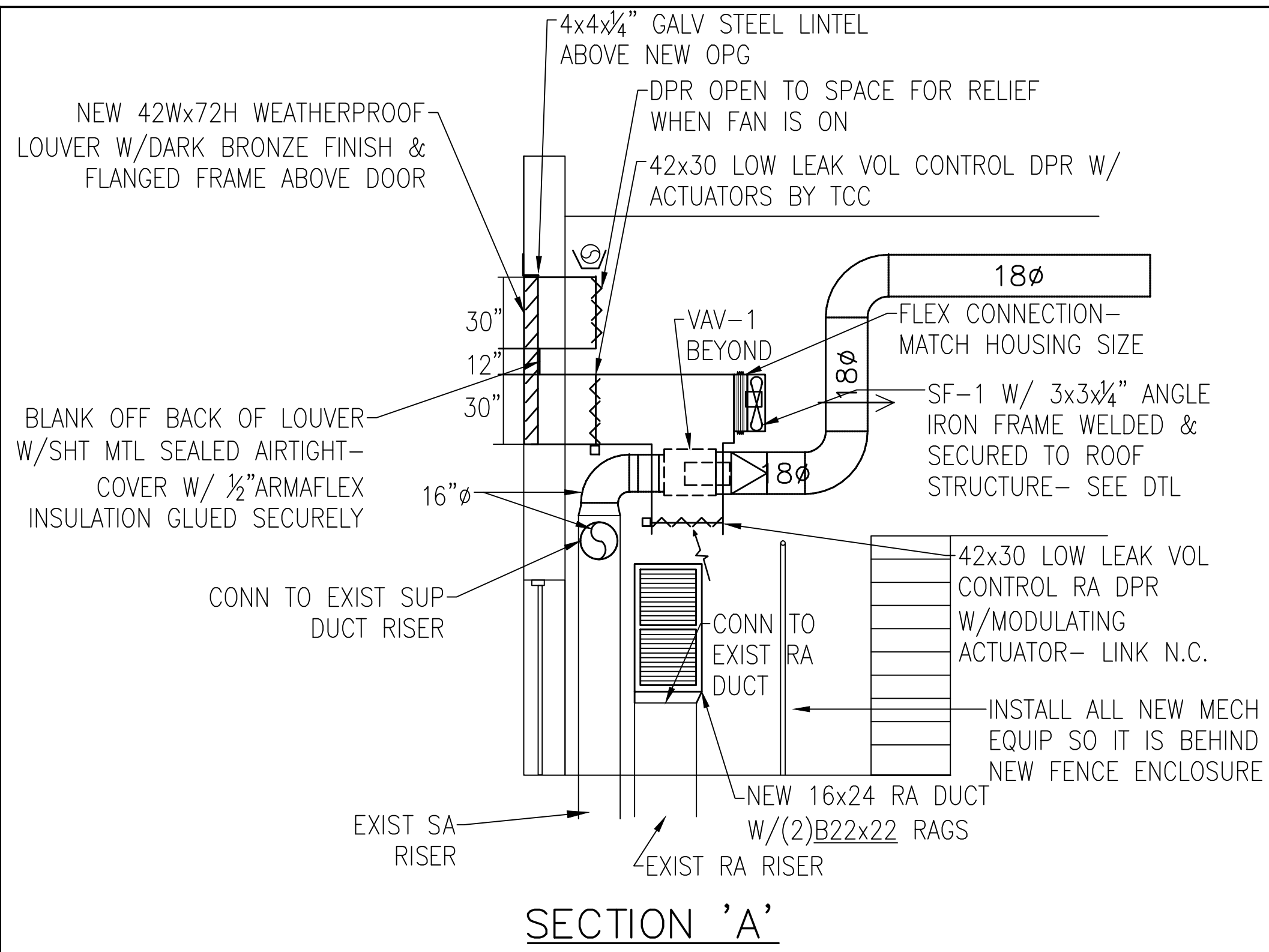
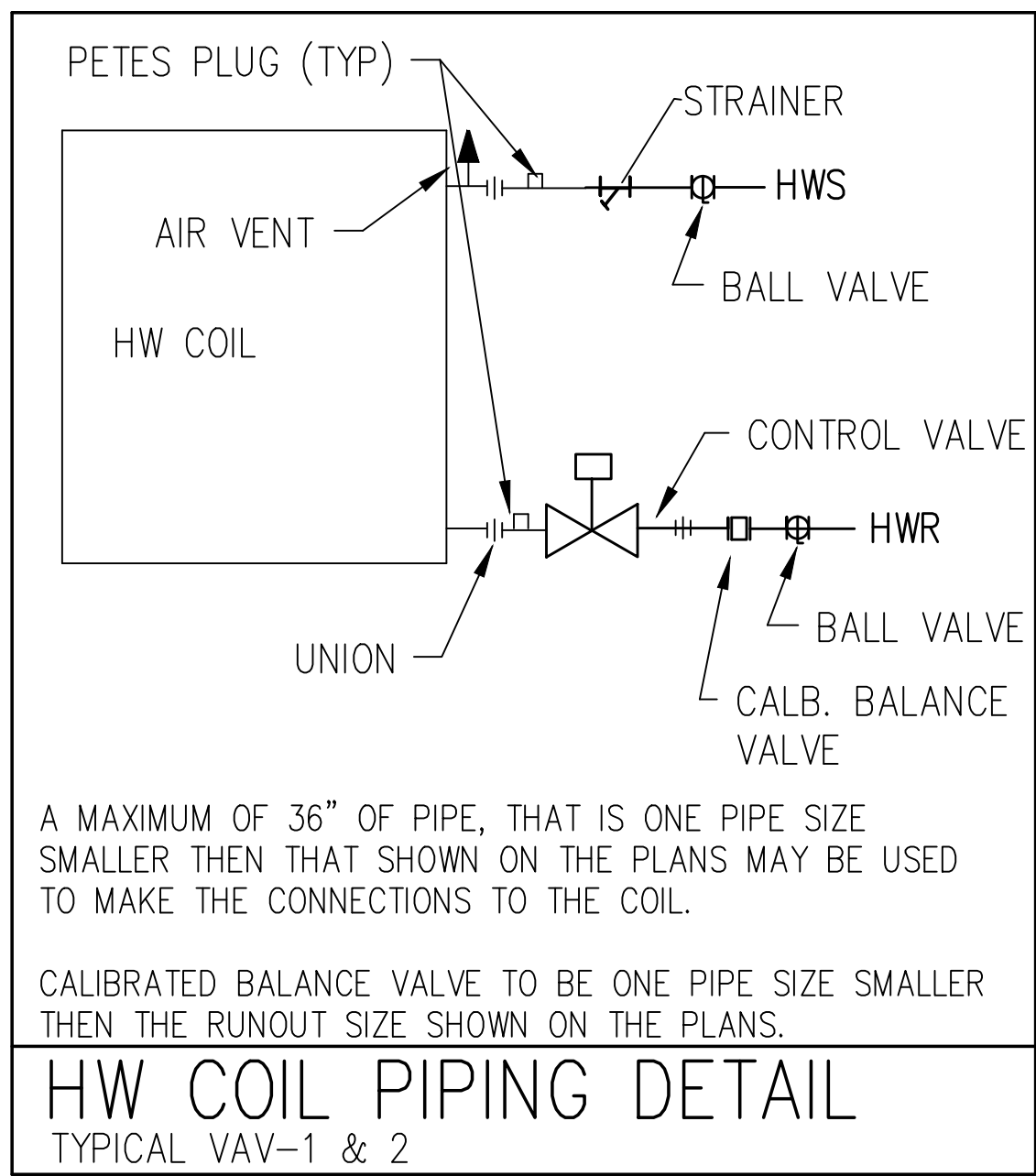


ELEVANTH FLOOR MECHANICAL PLAN, ELEVATOR BANK "A"

1"=0'-0" 1' 2' 4' 8'



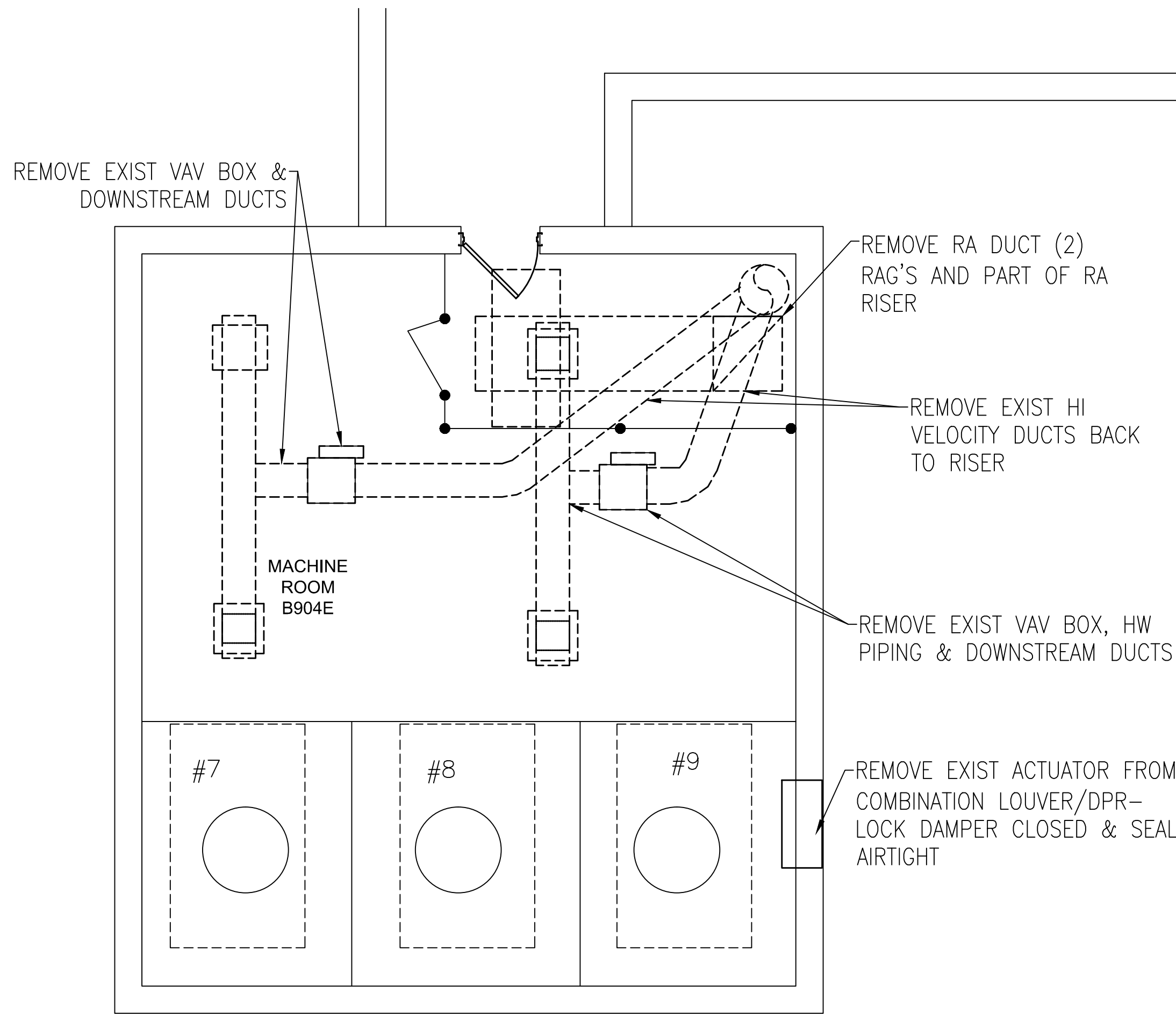
three inches = one foot
one and one half inches = one foot
one inch = one foot
three quarters inch = one foot
one half inch = one foot
three eighths inch = one foot
one quarter inch = one foot
one eighth inch = one foot
one sixteenth inch = one foot



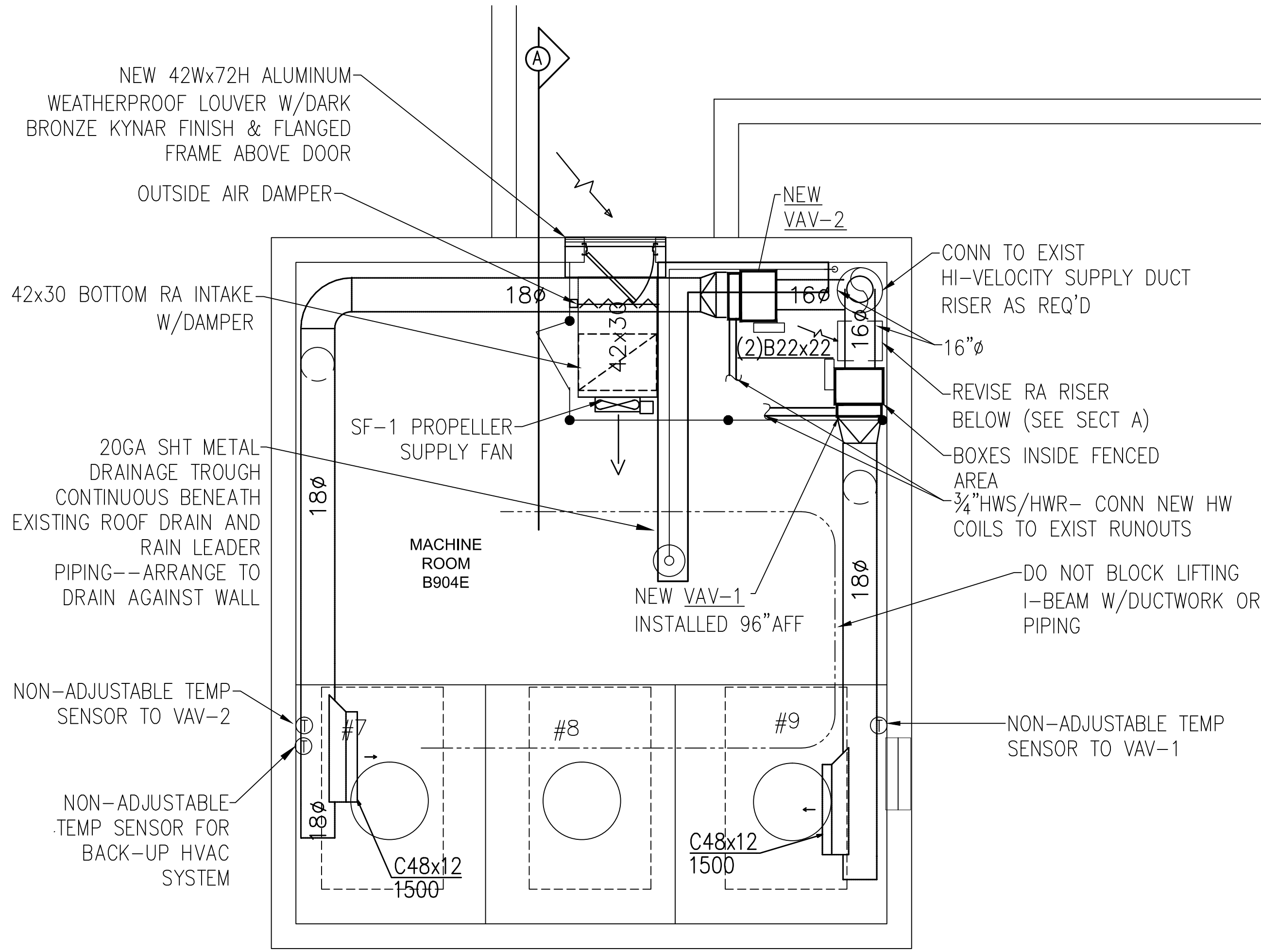
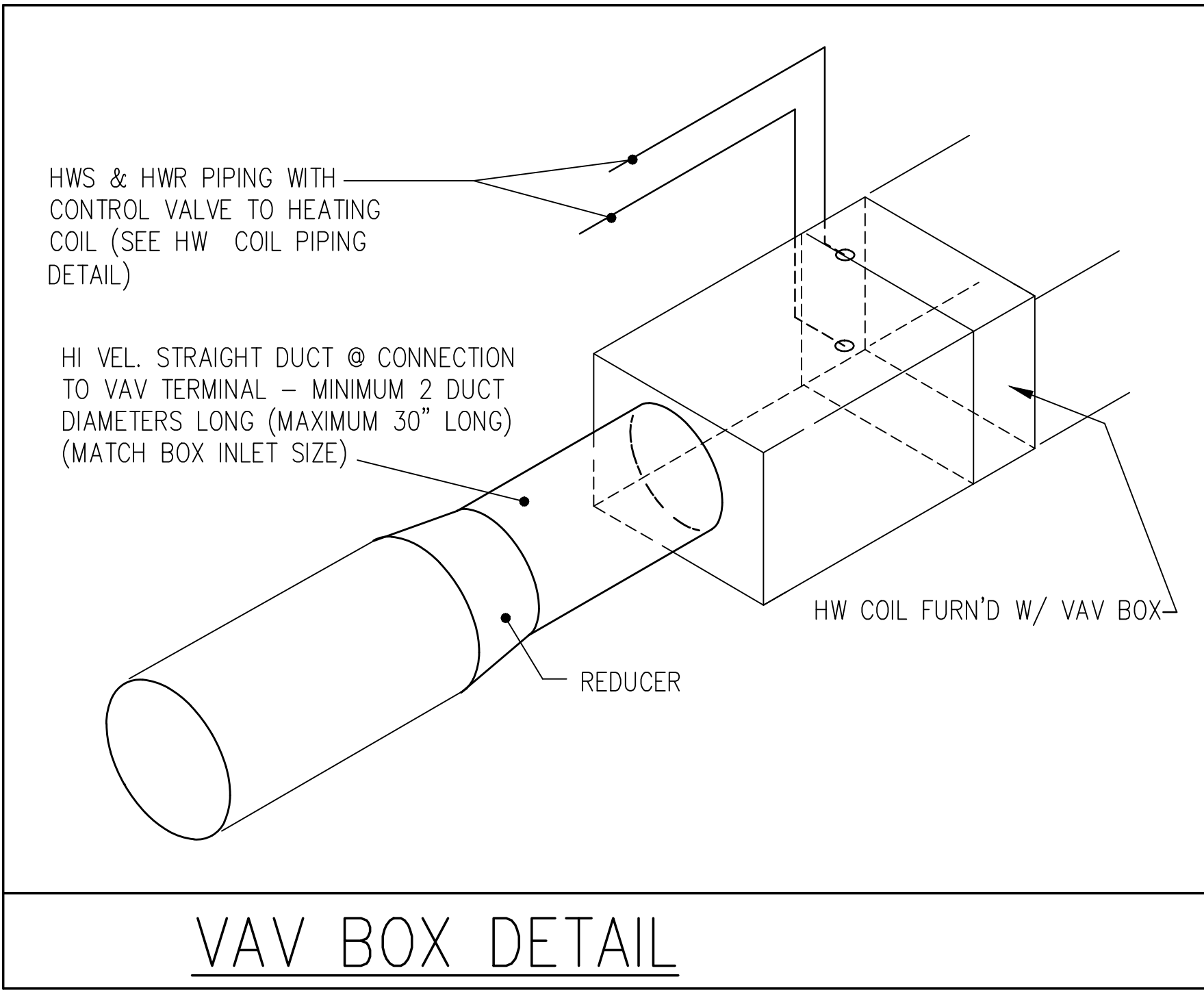
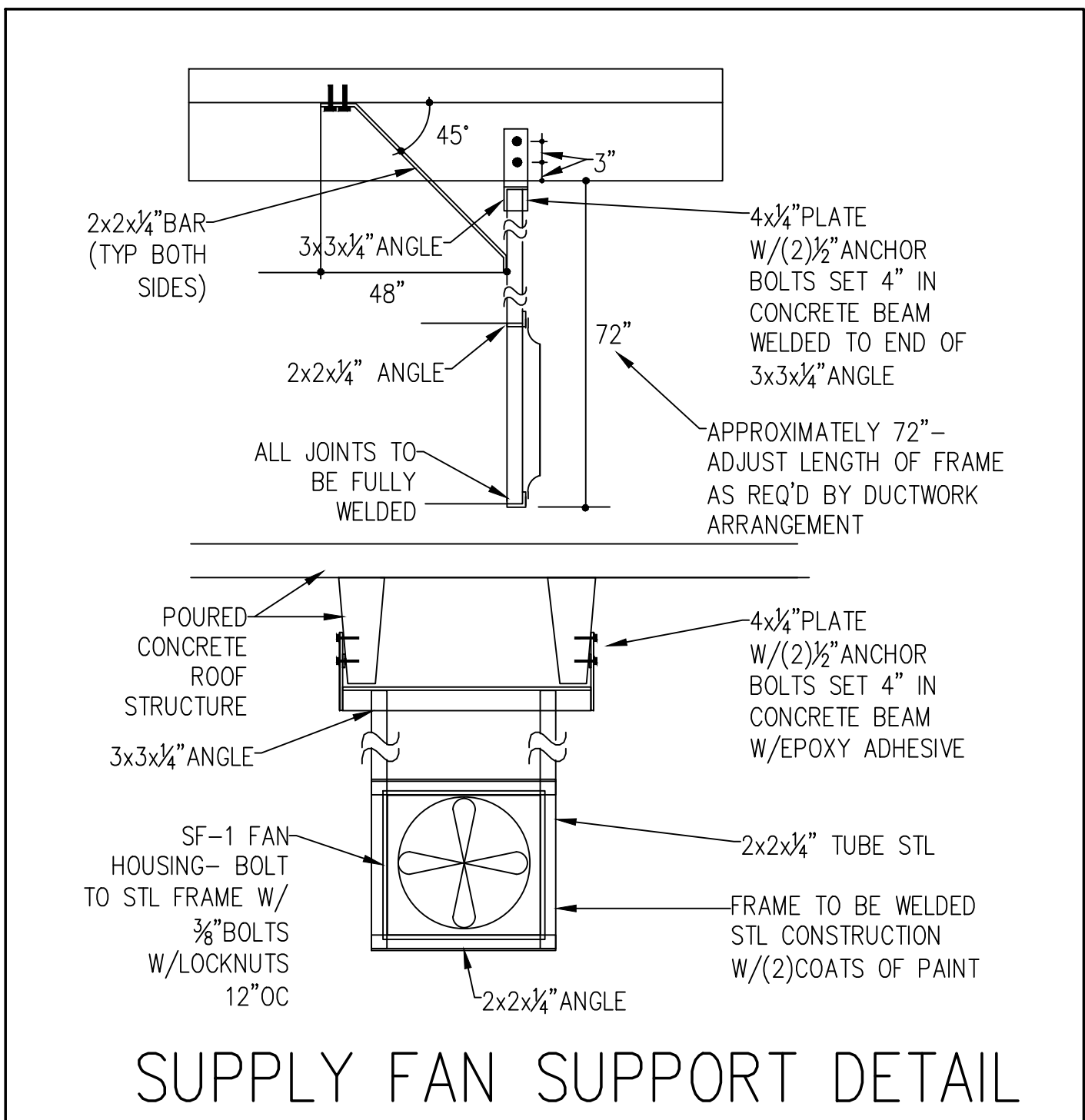
DIFFUSER & GRILLE SCHEDULE				
MARK	STYLE	DAMPER	REMARKS	PRICE MODEL #
A	SR ②	---		730H
A	RAG ②	---		630 DAL
MARK: ①-CEILING DIFF ②-SUPPLY REG ③-RETURN AIR OR ④-EXHAUST REG ⑤-EXHAUST GR ⑥-FR-FLOOR REG ⑦-FR-FLOOR REG ⑧-FR-FLOOR REG ⑨-FR-FLOOR REG ⑩-FR-FLOOR REG ⑪-FR-FLOOR REG ⑫-FR-FLOOR REG ⑬-FR-FLOOR REG ⑭-FR-FLOOR REG ⑮-FR-FLOOR REG ⑯-FR-FLOOR REG ⑰-FR-FLOOR REG ⑱-FR-FLOOR REG ⑲-FR-FLOOR REG ⑳-FR-FLOOR REG ㉑-FR-FLOOR REG ㉒-FR-FLOOR REG ㉓-FR-FLOOR REG ㉔-FR-FLOOR REG ㉕-FR-FLOOR REG ㉖-FR-FLOOR REG ㉗-FR-FLOOR REG ㉘-FR-FLOOR REG ㉙-FR-FLOOR REG ㉚-FR-FLOOR REG ㉛-FR-FLOOR REG ㉜-FR-FLOOR REG ㉝-FR-FLOOR REG ㉞-FR-FLOOR REG ㉟-FR-FLOOR REG ㊱-FR-FLOOR REG ㊲-FR-FLOOR REG ㊳-FR-FLOOR REG ㊴-FR-FLOOR REG ㊵-FR-FLOOR REG ㊶-FR-FLOOR REG ㊷-FR-FLOOR REG ㊸-FR-FLOOR REG ㊹-FR-FLOOR REG ㊺-FR-FLOOR REG ㊻-FR-FLOOR REG ㊼-FR-FLOOR REG ㊽-FR-FLOOR REG ㊾-FR-FLOOR REG ㊿-FR-FLOOR REG				
1. EQUAL BY INDOOR, PRICE OR TITUS 2. ALL ALUM CONSTRUCTION				

SUPPLY FAN SCHEDULE											
MARK	CFM	S.P.	H.P.	FAN R.P.M.	TIP SPEED	SONES	CURRENT	DRIVE	TYPE	REMARKS	
SF-1	4000	0.50"	3/4	1750	---	17.4	460/60/3	DIRECT	PROP	FURNISH W/DISCHARGE GUARD	
NOTE: EQUAL TO GREENHECK SI-1B-429-17 (OR EQUAL BY PENN-BARRY OR COOK											

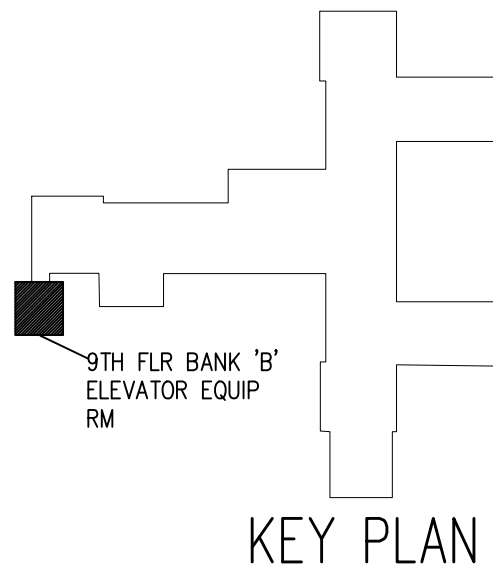
Single Duct Terminal Unit with Hot Water Heat Schedule																		
Tag	Model	Size		CFM		Static Pressure		NC Levels		CFM		Hot Water Heating Coil						
		Unit	Outlet	Max	Min	Inlet	Down	Min	Rad.	Disch.	CFM	MBH	EAT/LAT	APd	GPM	EW/LWT	WpD	Rows
VAV-01	LMHS	16	24x18	1500	450	1"	0.25	0.21	13	0	450	32	55/83	0.18	2.0	180/144.2	0.2	2
VAV-02	LMHS	16	24x18	1500	450	1"	0.25	0.21	13	0	450	32	55/83	0.18	2.0	180/144.2	0.2	2
Notes:																		
1. Room NC level shown includes attenuation transfer functions from tables in ARI Standard 885-98.																		
2. Sound data shall be obtained from tests conducted in accordance with ARI Standard 880.																		
3. Duct dimensions are approximate. Check submittal drawings for exact dimensions.																		



PARTIAL NINTH FLOOR MECHANICAL DEMO PLAN, ELEVATOR BANK "B"

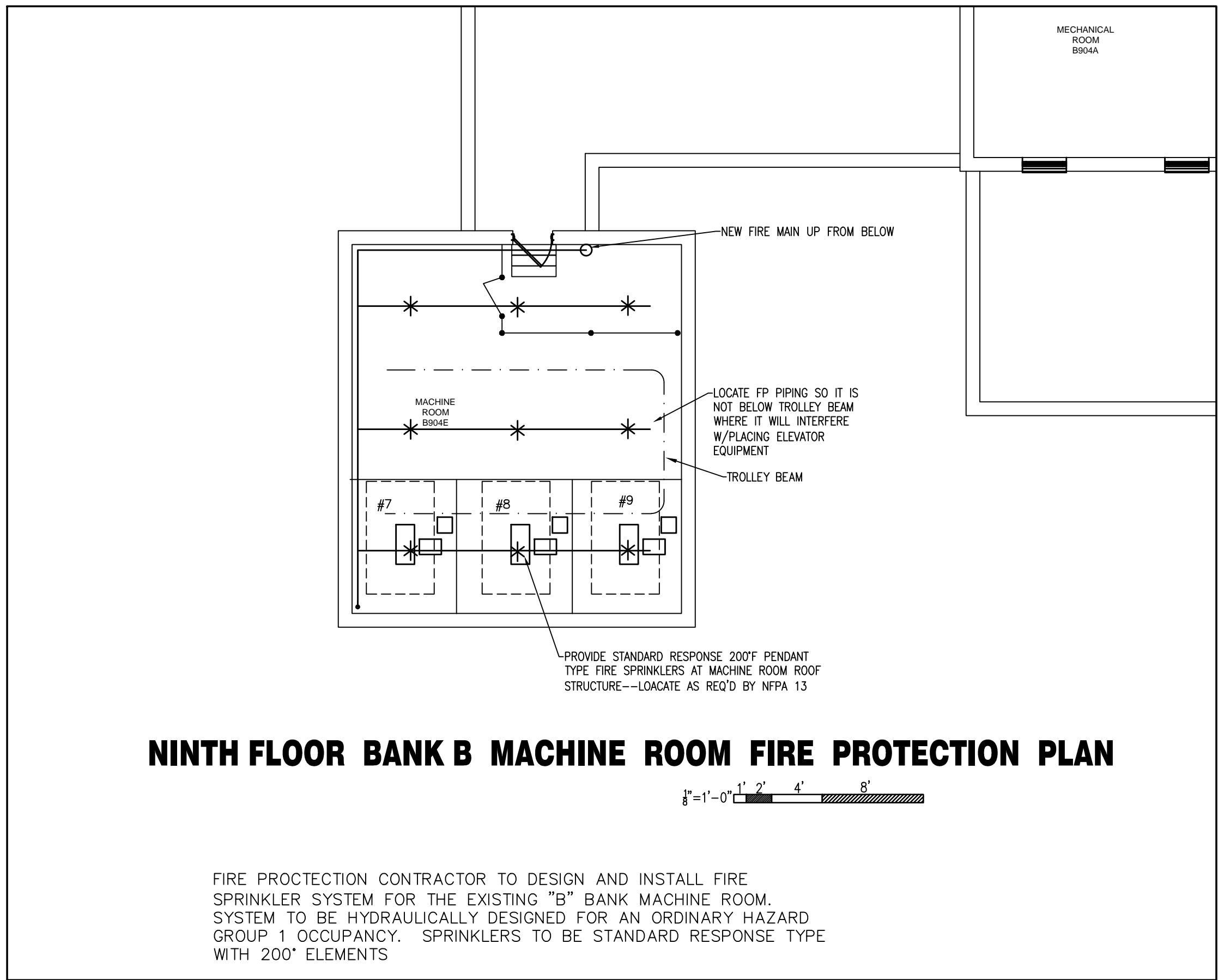


PARTIAL NINTH FLOOR MECHANICAL PLAN, ELEVATOR BANK "B"



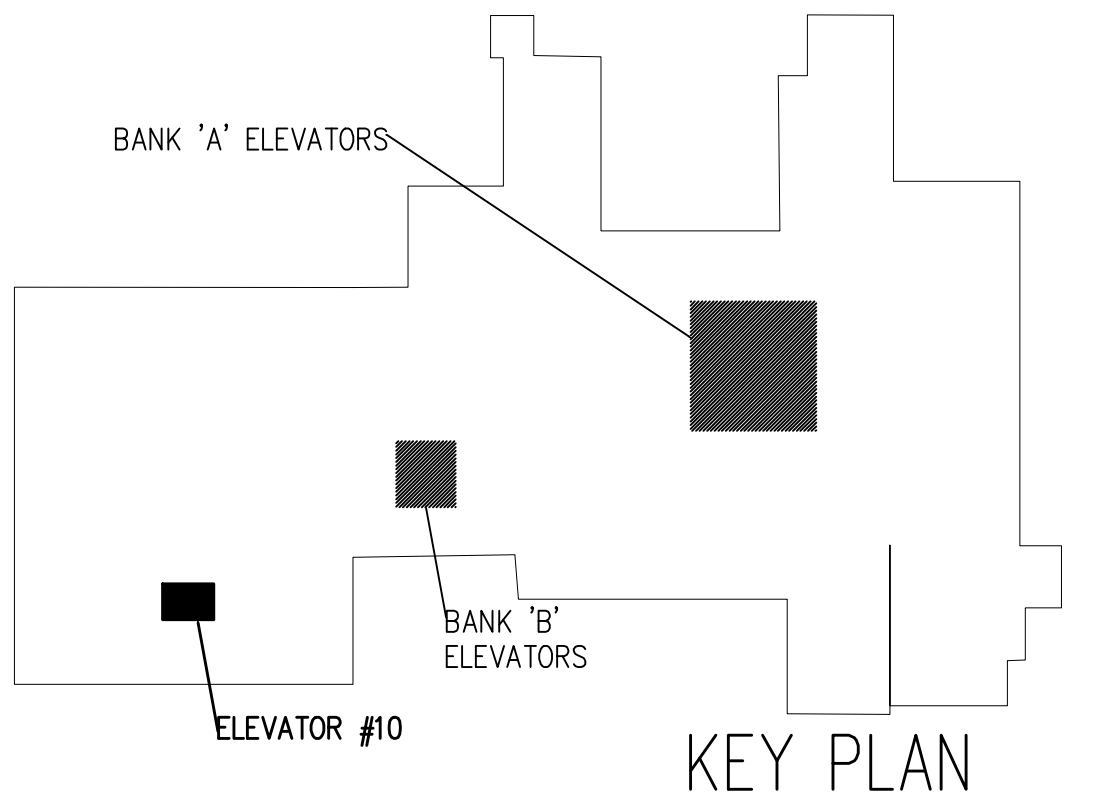
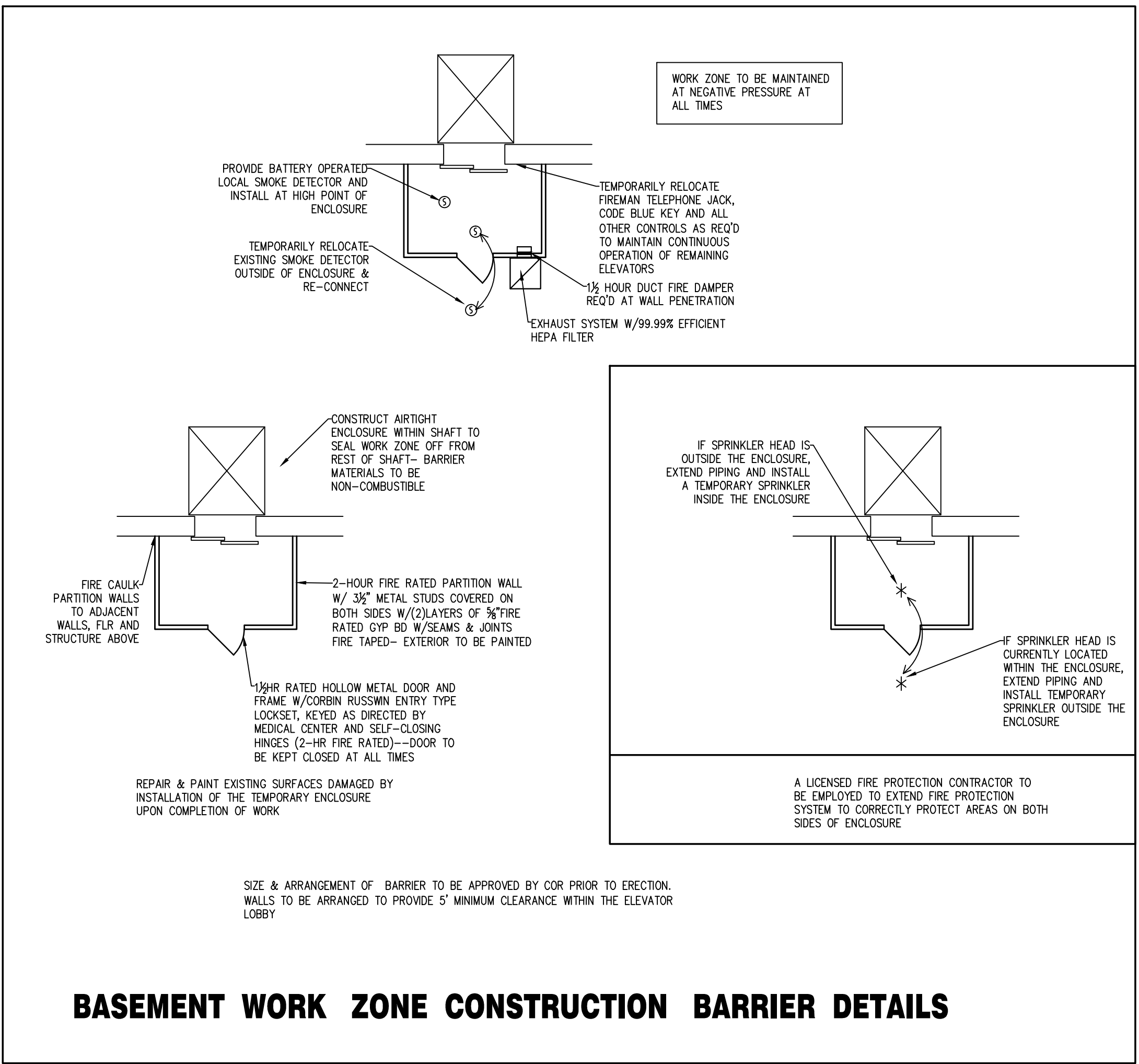
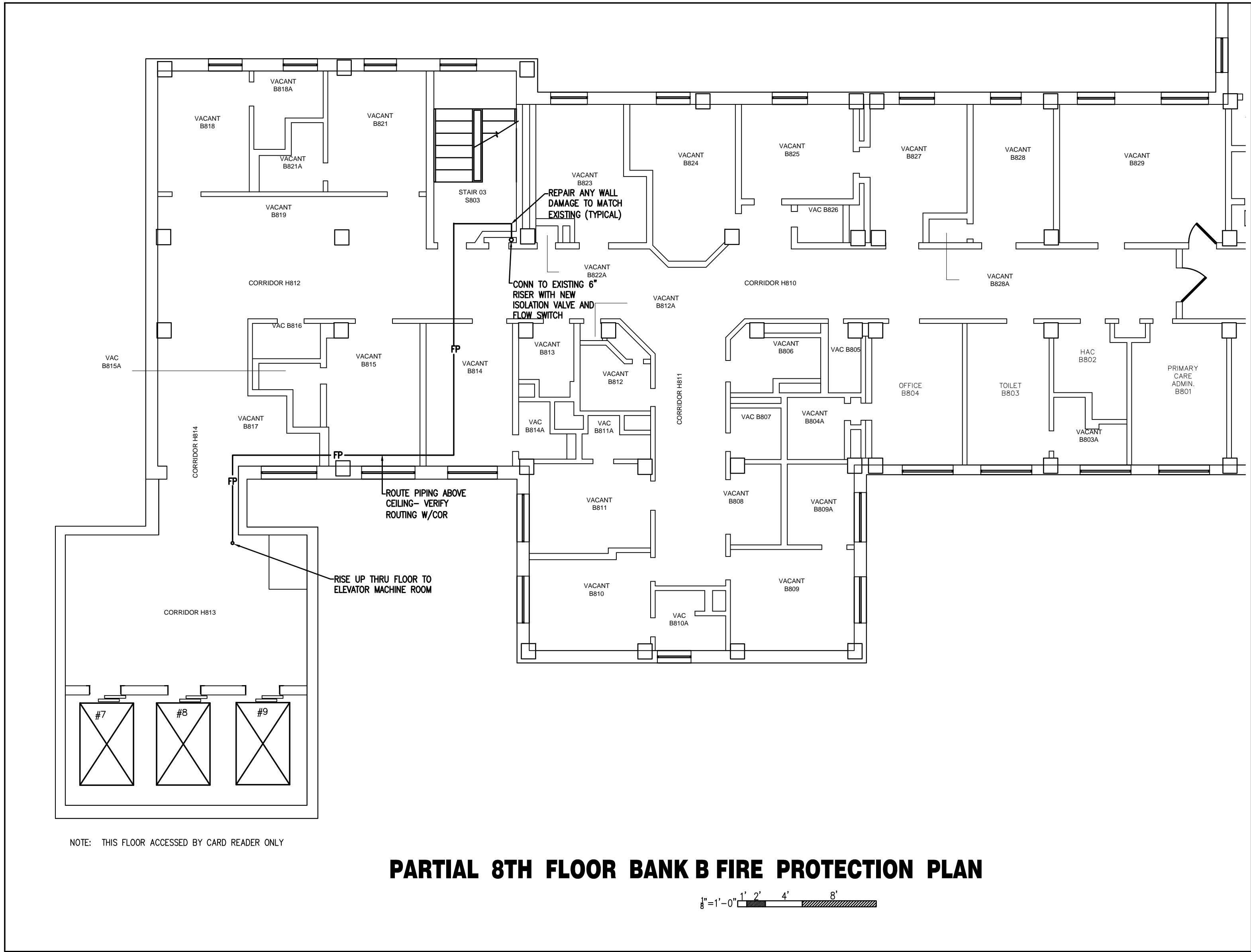
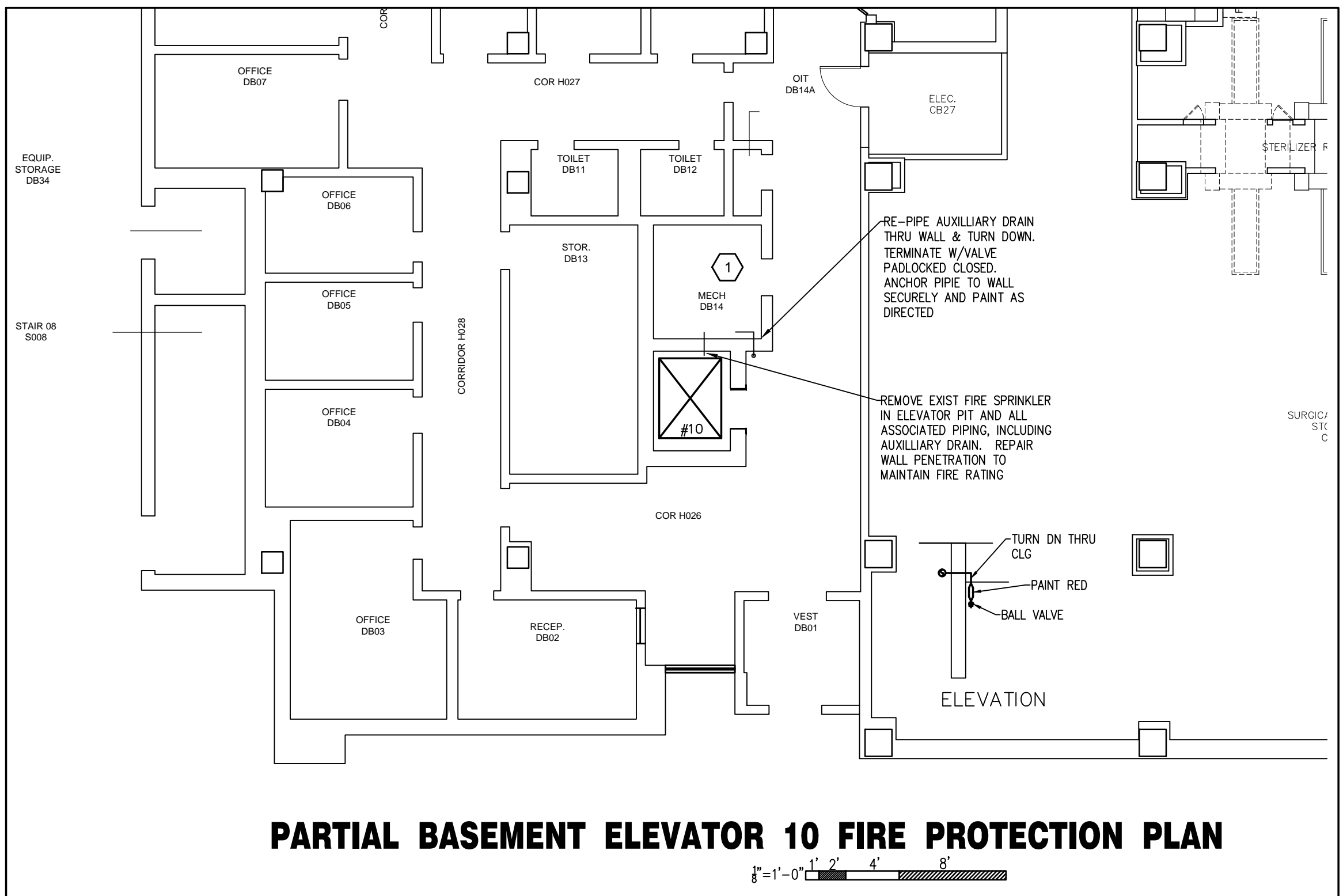
CONSULTANTS:		ARCHITECT/ENGINEERS:		Drawing Title		Project Title		Project Number		Department of Veterans' Affairs	
VAN DEUSEN and ASSOCIATES, VERTICAL TRANSPORTATION CONSULTANTS		DUDLEY WILLIAMS and ASSOCIATES, PA JOHNSON ENGINEERING		PARTIAL 9TH FLOOR MECHANICAL PLAN ELEVATOR BANK "B"		REPLACE MECHANICAL CONTROLS and UPGRADE CABS, MAIN ELEVATORS		657-15-200JC		Medical Center	
				Approved Project Director		Location VAMC - ST. LOUIS, MISSOURI - JC		Building Number 01		John Cochran Division	
Revisions		Date				Date OCTOBER 25, 2016		Checked BP		Drawn JM	
								Drawing Number 100% REVIEW SET		1-M102	
								Dwg. 15 of 23			

three inches = one foot
one and one half inches = one foot
one inch = one foot
three quarters inch = one foot
one half inch = one foot
three eighths inch = one foot
one quarter inch = one foot
one eighth inch = one foot



NOTE

BASE HYDRAULIC CALCULATIONS ON WATER SUPPLY CHARACTERISTICS TAKEN FROM THE LATEST FLOW TEST (9-6-2015) PERFORMED AT THE BASE OF STAIR 8. ASSUME 6" WATER MAIN CONNECTS ALL STAIRS.
FLOW: 500 GPM
STATIC PRESSURE: 91 PSI
ELEVATION OF TEST GAUGE: 541.5'
ELEVATION AT BOTTOM OF MACHINE ROOM ROOF STRUCTURE: 660.5'



NOTE: ALL NEW & REVISED FIRE PROTECTION PIPING TO BE PAINTED RED

CONSULTANTS:		ARCHITECT/ENGINEERS:		Drawing Title		Project Title		Project Number		Department of Veterans' Affairs	
VAN DEUSEN and ASSOCIATES, VERTICAL TRANSPORTATION CONSULTANTS		DUDLEY WILLIAMS and ASSOCIATES, PA JOHNSON ENGINEERING		FIRE PROTECTION FLOOR PLANS		REPLACE MECHANICAL CONTROLS and UPGRADE CABS, MAIN ELEVATORS		657-15-200JC		Medical Center	
				Approved Project Director		Location		Building Number		John Cochran	
						VAMC - ST. LOUIS, MISSOURI - JC		01		Division	
						Date		Drawing Number		Department of Veterans Affairs	
						OCTOBER 25, 2016		100% REVIEW SET			
						Checked		1-M103			
						BP		Dwg. 16 of 23			
						Drawn					
						JM					