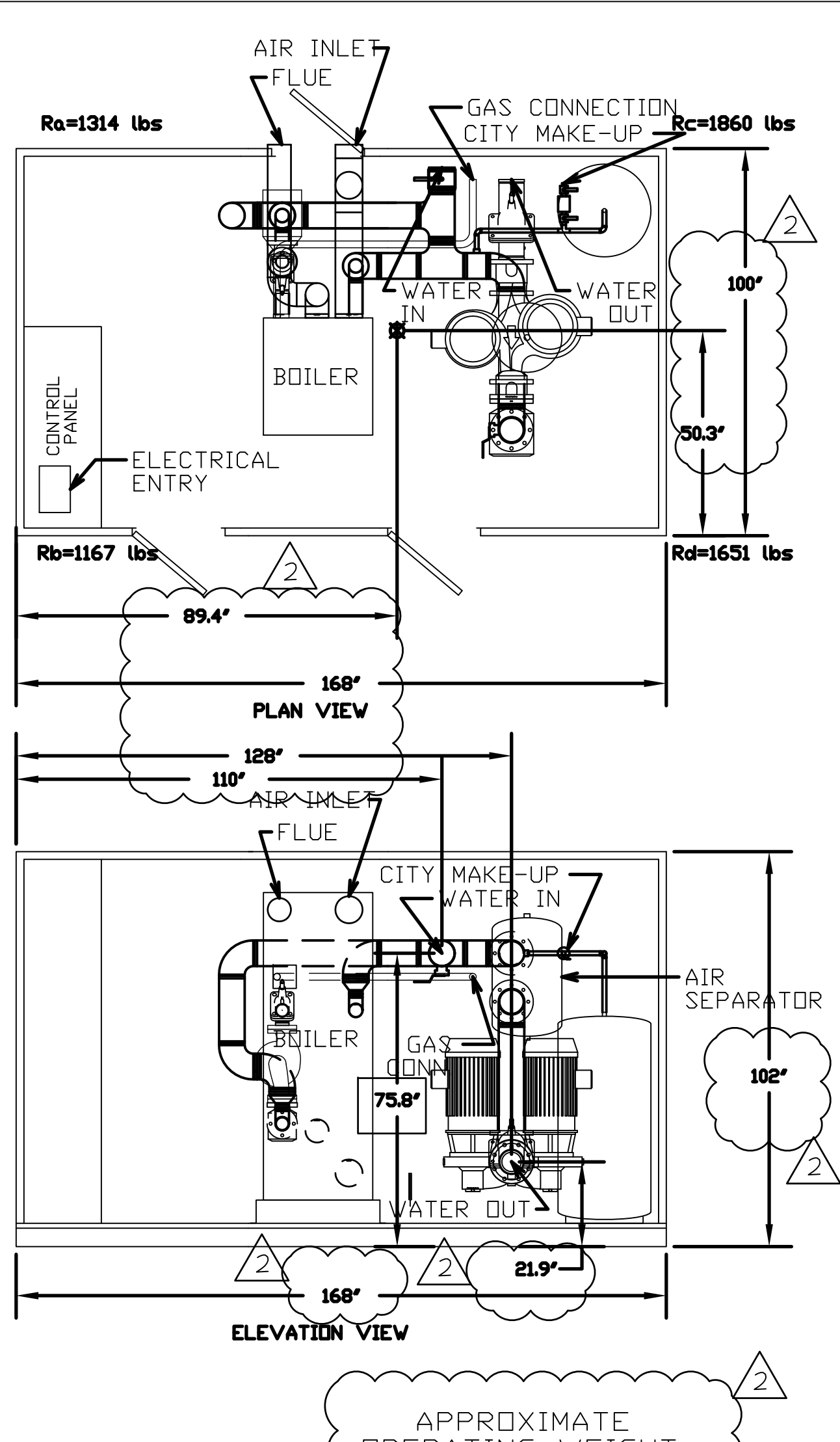


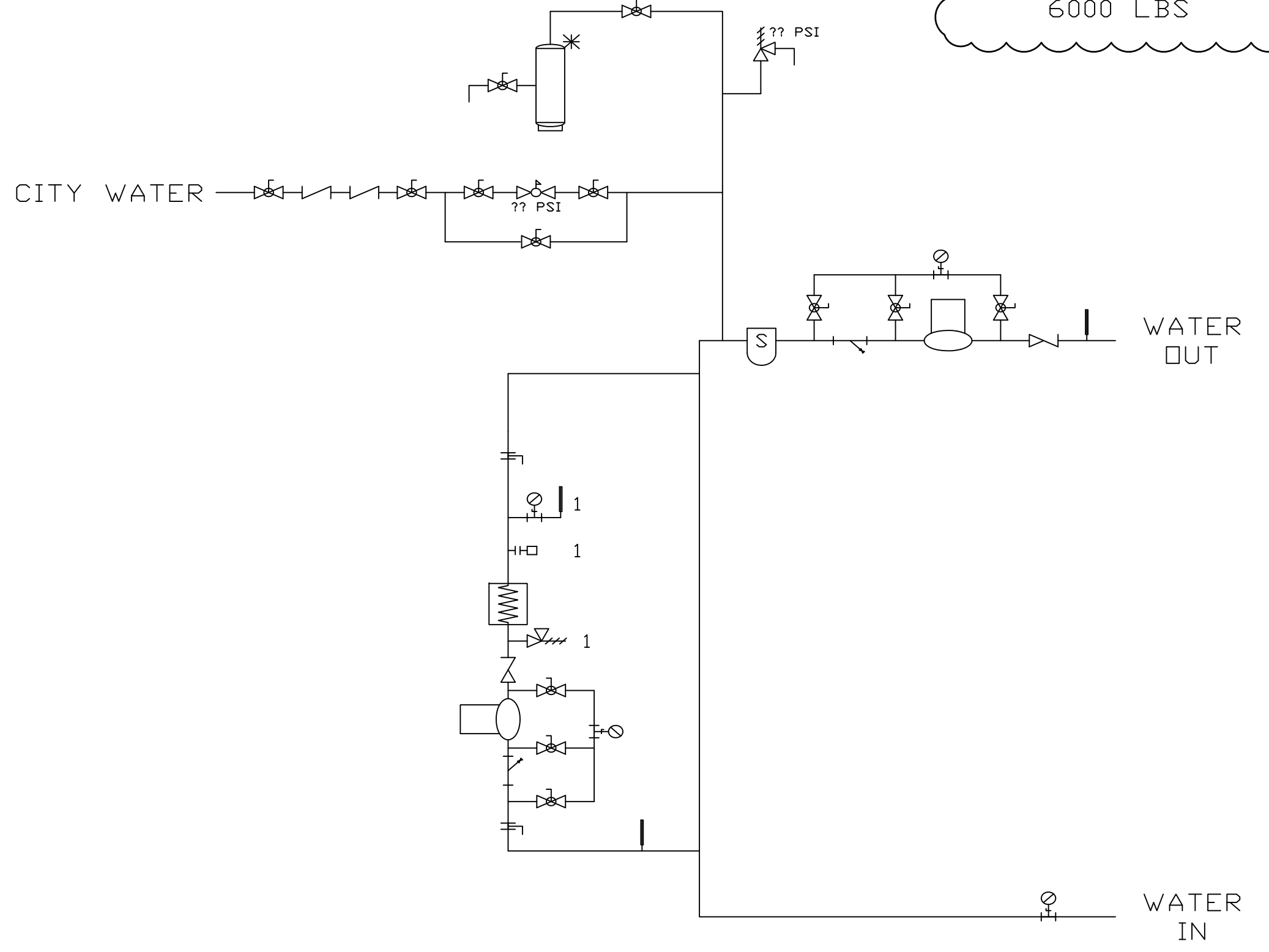
three inches = one foot
one and one half inches = one foot
one inch = one foot
three quarters inch = one foot
one half inch = one foot
one quarter inch = one foot
one eighth inch = one foot
one sixteenth inch = one foot

BOILER PLANT MECHANICAL SYMBOLS

- PUMP
- BUTTERFLY VALVE
- STRAINER
- PRESSURE GAUGE W/ NEEDLE VALVE
- THERMOMETER
- BALL VALVE
- PRESSURE RELIEF VALVE
- PRESSURE REDUCING VALVE
- COMBINATION ISOLATION, CHECK, AND BALANCING VALVE
- BACKFLOW PREVENTER
- EXPANSION TANK
- BOILER
- AIR SEPARATOR
- COMBINATION PRESSURE AND TEMPERATURE GAUGE
- FLOW SWITCH
- SAFETY RELIEF VALVE
- 1 PROVIDED WITH BOILER



APPROXIMATE OPERATING WEIGHT: 6000 LBS

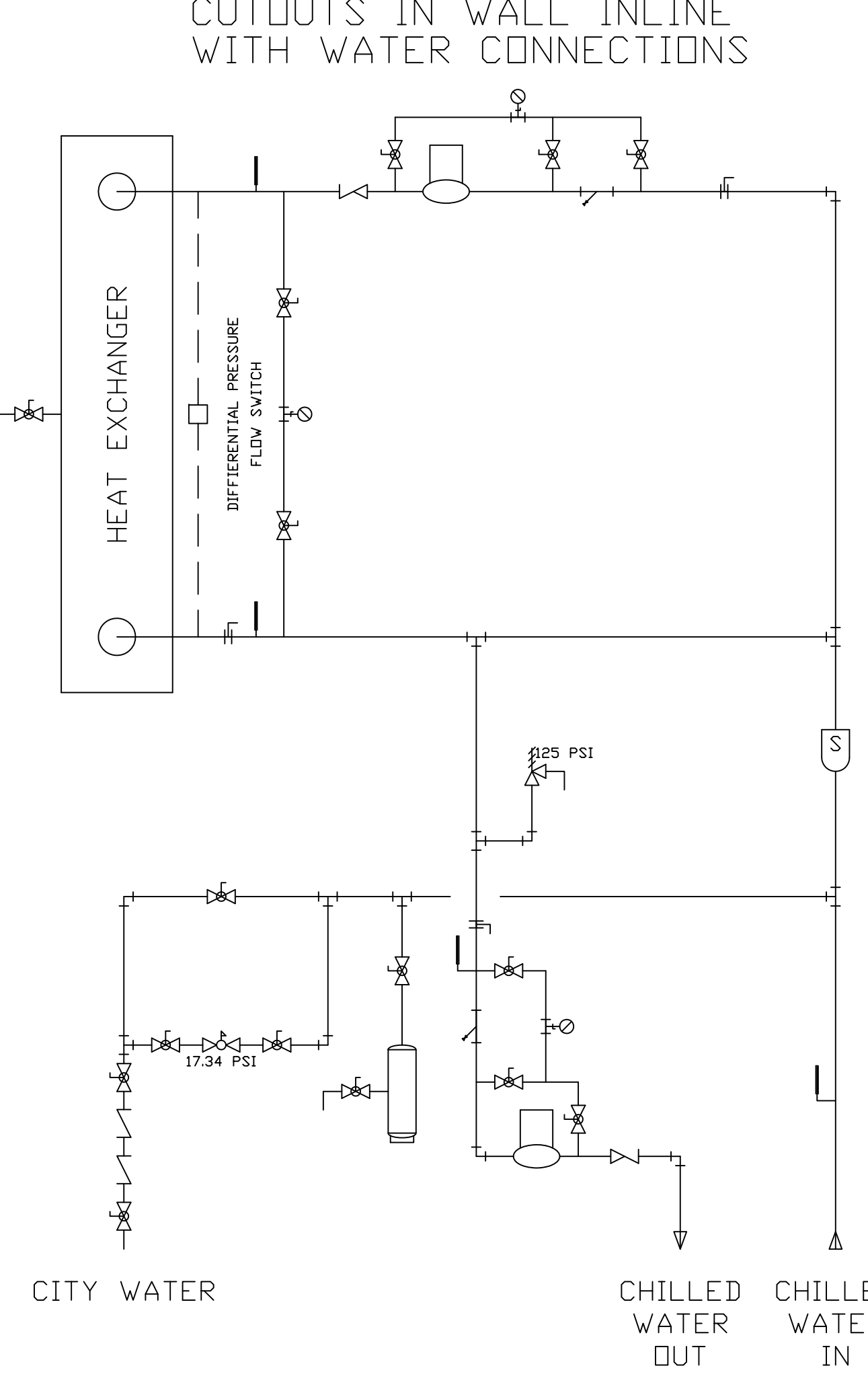


1 PACKAGE BOILER PLANT AND SCHEMATIC DETAILS
NTS

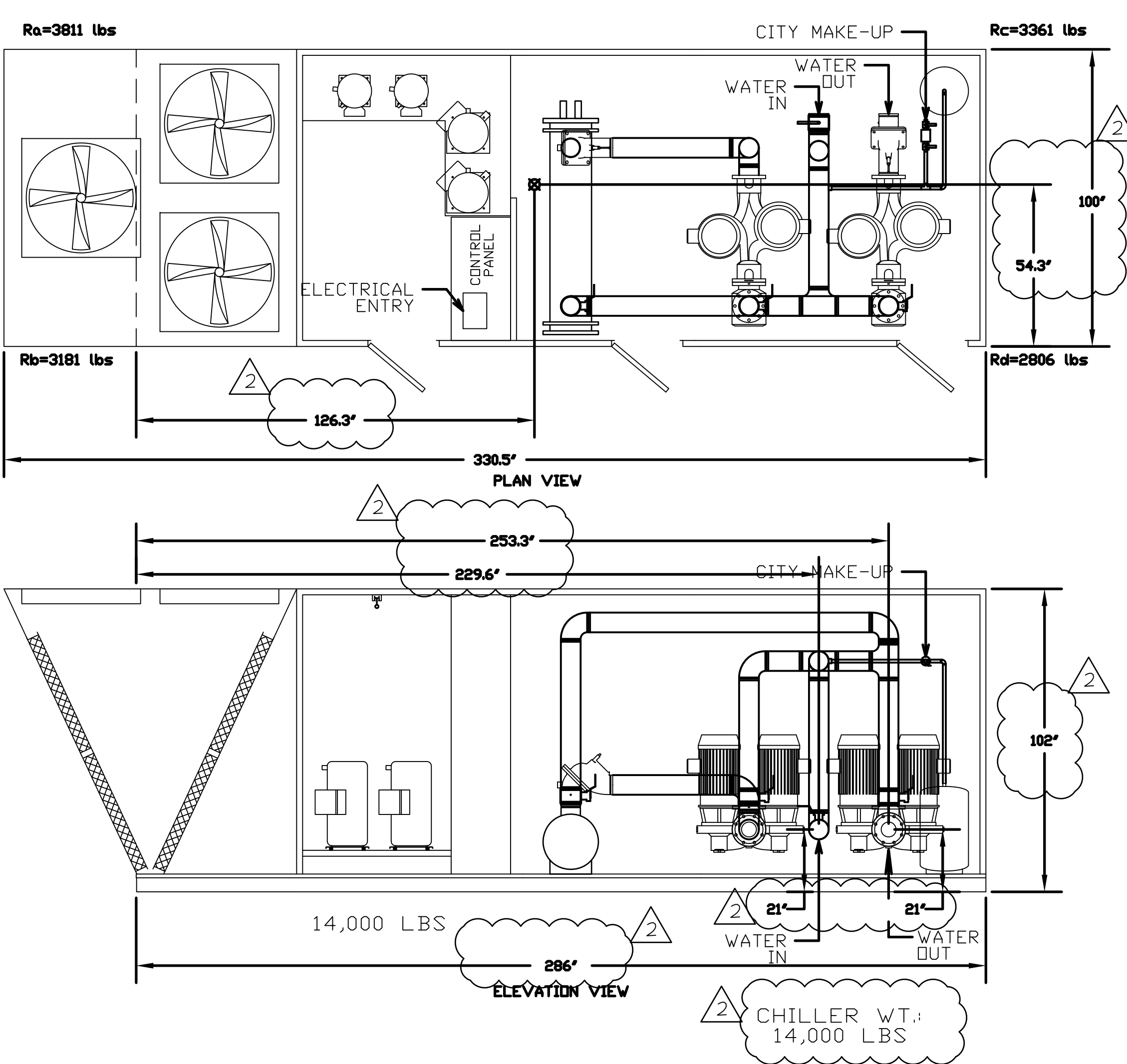
CHILLER PLANT MECHANICAL SYMBOLS

- PUMP
- BUTTERFLY VALVE
- STRAINER
- PRESSURE GAUGE W/ NEEDLE VALVE
- THERMOMETER
- BALL VALVE
- PRESSURE RELIEF VALVE
- PRESSURE REDUCING VALVE
- COMBINATION ISOLATION, CHECK, AND BALANCING VALVE
- BACKFLOW PREVENTER
- EXPANSION TANK
- AIR SEPARATOR

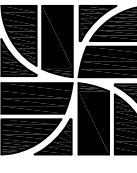

NOTE: AUTOMATIC AIR VENT REQUIRED AT THE HIGH POINT IN THE SYSTEM.



2 PACKAGE BOILER PLANT AND PIPE SCHEMATIC DETAILS
NTS



RECORD DRAWINGS
DATE: NOVEMBER 16, 2012
THESE AS-BUILT DOCUMENTS HAVE BEEN PREPARED BASED ON INFORMATION PROVIDED BY THE CONTRACTOR JACOBUS GENERAL CONTRACTORS, LTD. THE ARCHITECT/ ENGINEER HAS NOT VERIFIED THE ACCURACY AND/OR COMPLETENESS OF THIS INFORMATION AND SHALL NOT BE RESPONSIBLE FOR ANY ERRORS OR OMISSIONS THAT MAY BE INCORPORATED AS RESULT OF INCORRECT INFORMATION PROVIDED BY THE CONTRACTOR.

CONSULTANTS:		Approved: Assistant Director	Approved: Chief of Staff	Approved: Chief, Engineering	ARCHITECT: WEST EAST DESIGN GROUP  1617 E. COMMERCE ST., SUITE 7102, SAN ANTONIO, TEXAS 78205 USA 210.530.0755 FAX 210.530.9427 <small>These documents can not be copied or reproduced without written consent from WestEast Design Group</small>	Drawing Title CHILLED WATER AND HOT WATER MECHANICAL DETAILS	Project Title POLYTRAUMA TRANSITIONAL HOUSING	Project Number 671-237	Office of Facilities Management 
<div>Revisions: Date</div>		Approved: Service Chief	Approved: Service Chief	Approved: Service Chief		Approved: Project Director	Location Audie L. Murphy Memorial Veterans Hospital San Antonio, Texas	Building Number 1	
		Approved: Chief, Biomed	Approved: Chief, EMS	Approved: Chief, Infection Control		Date 28 JULY 2010	Checked	Drawing Number MH3.4	
		Approved: Chief, IT	Approved: Chief, M & O	Approved: Chief, Police				Dwg. 9 of 10	
		Approved: Chief, Safety	Approved: Chief	Approved: Chief					