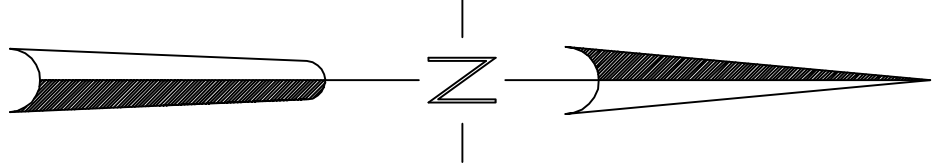
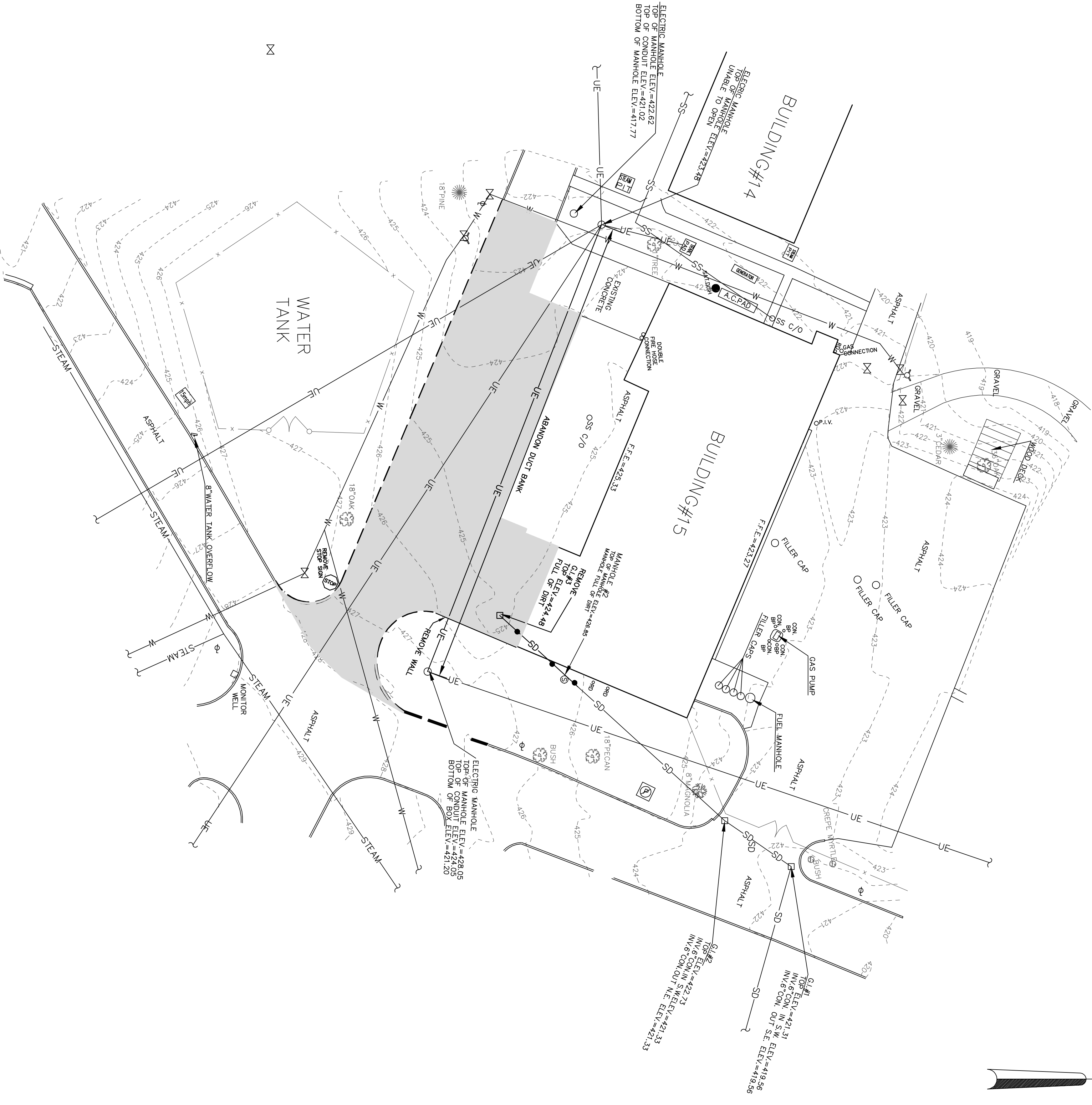
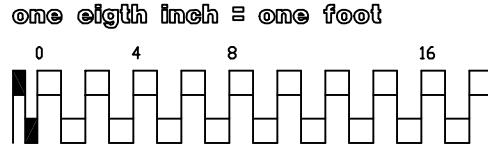
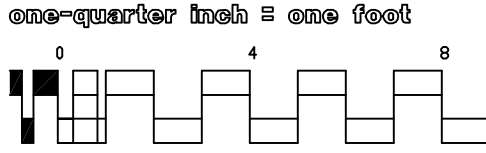


0 4 8

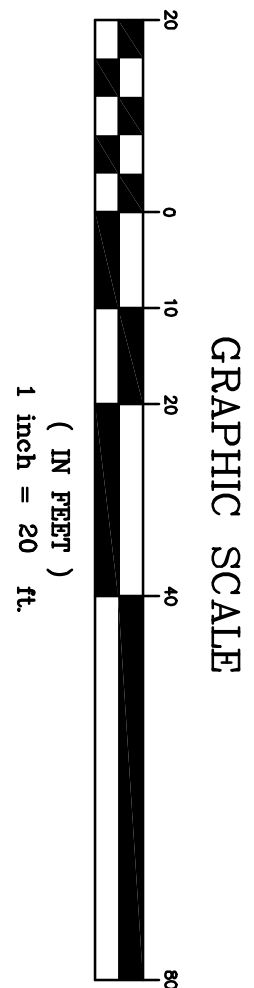


LEGEND

DESCRIPTION	EXISTING	TO BE REMOVED
BUILDING		
CURB		
CURB & GUTTER		
CONCRETE PAVEMENT		
ASPHALT PAVEMENT		
CONTOUR		
STORM DRAIN LINE		
WATER LINE		
SANITARY SEWER MANHOLE		
ROOF DRAIN		
STOP SIGN		
STORM MANHOLE		
GRATE INLET		
SATELLITE DISH		
MONITOR WELL		
CLEAN-OUT		
WATER METER		
FIRE HYDRANT		
POWER POLE		
LIGHT POLE		
STEAM PIT		
NO PARKING SIGN		
FILLER CAP		
FUEL MANHOLE		
GUY WIRE		
BUMPER POST		
TRANSFORMER PAD		
BUSH		
TREE		
FENCE		
CONCRETE ISLAND		
SPEED LIMIT SIGN		
STEAM LINE		
ELECTRICAL LINE (UNDERGROUND)		
SANITARY SEWER LINE		
BRICK WALL		
POST INDICATOR VALVE		
GAS CONNECTION		
GENERATOR PAD		

NOTES:

1. THE UNDERGROUND UTILITIES SHOWN HAVE BEEN LOCATED FROM RECORD DRAWINGS AND FIELD SURVEY. THE SURVEYOR MAKES NO GUARANTEE THAT THE UNDERGROUND UTILITIES SHOWN COMPRISE ALL SUCH UTILITIES IN THE AREA. OTHER UTILITIES NOT SHOWN ON THESE RECORDS AND NOT DISCOVERED BY FIELD SURVEY ARE IN THE EXACT LOCATION INDICATED ALTHOUGH HE DOES CERTIFY THAT THEY ARE LOCATED AS ACCURATELY AS POSSIBLE PHYSICALLY LOCATED ALL OF THE UNDERGROUND UTILITIES.



Professional Engineer Seal for P.E.C. CONSULTANTS, INC. and company information.

Project information block including MCE MILLS-CONOLY ENGINEERING, P.C., CIVILICS Central Alabama Veterans Health Care System, and Veterans Administration details.