

GENERAL NOTES

1. WHERE A FREE CHLORINE / CHLORINE DIOXIDE SENSOR AND INJECTION PORT ARE INDICATED, CONTRACTOR SHALL INSTALL PORT ON BOTH DOMESTIC COLD AND HOT WATER PIPING IN SAME ACCESSIBLE LOCATION.
2. INSTALL PALL-AQUASAFE FILTERS ON ALL PATIENT LAVATORIES AND SHOWERS.

KEYED NOTES

1. INSTALL QUICK DISCONNECTS ON HOT, HOT RETURN AND COLD WATER MAINS FOR PORTABLE CHLORINE INJECTION SYSTEM. SEE DETAIL C6 SHEET P-501.
2. INSTALL QUICK DISCONNECTS ON HOT RETURN AND HOT WATER MAINS AT THIS LOCATION FOR PORTABLE WATER QUALITY MONITORING DEVICE. SEE DETAIL C4 SHEET P-501.
3. INSTALL QUICK DISCONNECTS ON COLD WATER MAINS AT THIS LOCATION FOR PORTABLE WATER QUALITY MONITORING DEVICE. SEE DETAIL C4 SHEET P-501.

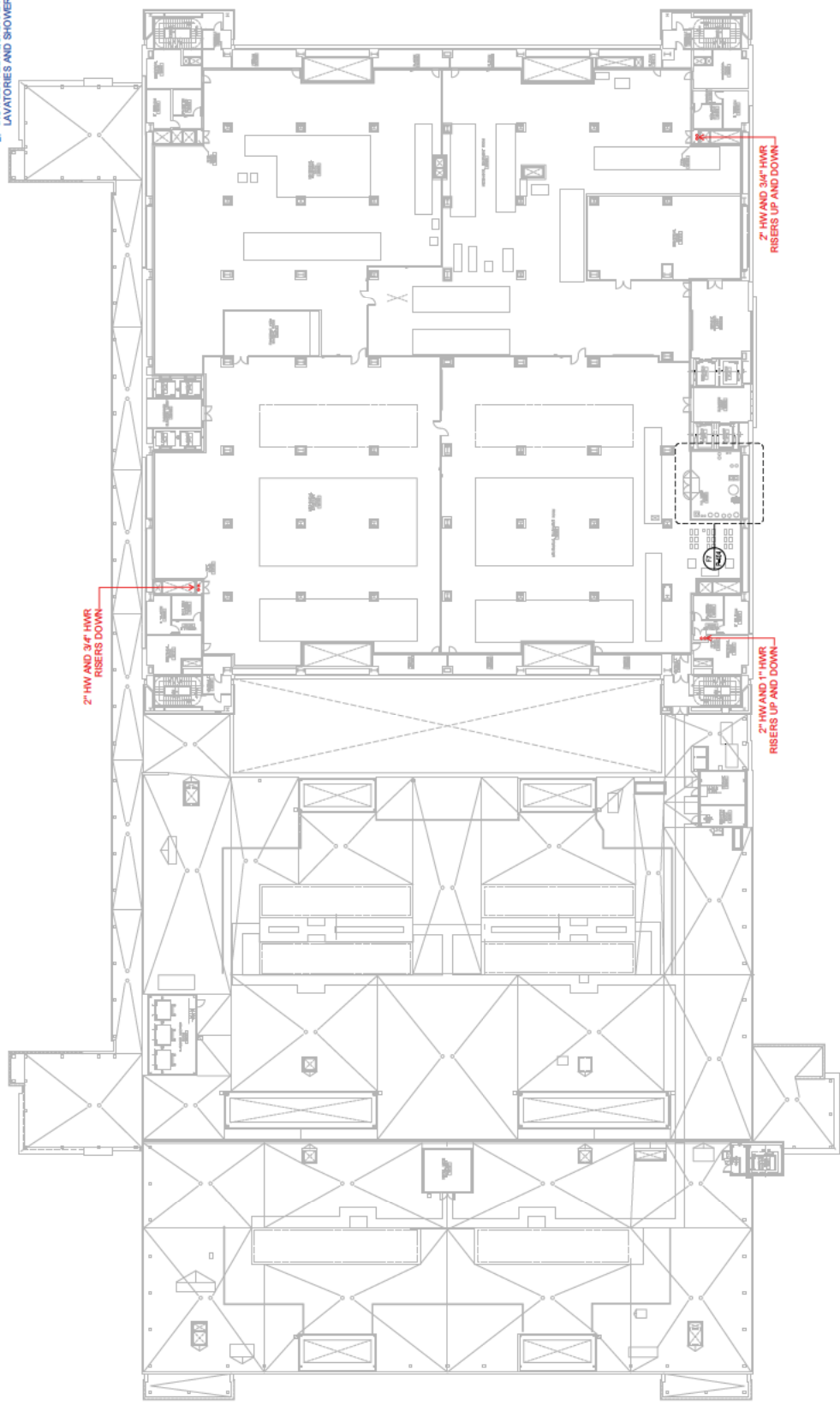
CONSTRUCTION DOCUMENT SUBMISSION

Project Title VA Medical Center Legionella Preventative Measures		Project Number 893-15-107		Office of Facilities Management	
Architect/Engineers HDR		Drawing Number P-102-1		Drawing of 9	
Key Plan		Title February 28, 2019		JCG AIC	
CONSULTANTS:		DATE 15 FEB 2019		BY JCG	
REVISIONS		REVISIONS		REVISIONS	
1		2		3	
4		5		6	
7		8		9	
10		11		12	
13		14		15	
16		17		18	
19		20		21	
22		23		24	
25		26		27	
28		29		30	
31		32		33	
34		35		36	
37		38		39	
40		41		42	
43		44		45	
46		47		48	
49		50		51	
52		53		54	
55		56		57	
58		59		60	
61		62		63	
64		65		66	
67		68		69	
70		71		72	
73		74		75	
76		77		78	
79		80		81	
82		83		84	
85		86		87	
88		89		90	
91		92		93	
94		95		96	
97		98		99	
100		101		102	
103		104		105	
106		107		108	
109		110		111	
112		113		114	
115		116		117	
118		119		120	
121		122		123	
124		125		126	
127		128		129	
130		131		132	
133		134		135	
136		137		138	
139		140		141	
142		143		144	
145		146		147	
148		149		150	
151		152		153	
154		155		156	
157		158		159	
160		161		162	
163		164		165	
166		167		168	
169		170		171	
172		173		174	
175		176		177	
178		179		180	
181		182		183	
184		185		186	
187		188		189	
190		191		192	
193		194		195	
196		197		198	
199		200		201	
202		203		204	
205		206		207	
208		209		210	
211		212		213	
214		215		216	
217		218		219	
220		221		222	
223		224		225	
226		227		228	
229		230		231	
232		233		234	
235		236		237	
238		239		240	
241		242		243	
244		245		246	
247		248		249	
250		251		252	
253		254		255	
256		257		258	
259		260		261	
262		263		264	
265		266		267	
268		269		270	
271		272		273	
274		275		276	
277		278		279	
280		281		282	
283		284		285	
286		287		288	
289		290		291	
292		293		294	
295		296		297	
298		299		300	
301		302		303	
304		305		306	
307		308		309	
310		311		312	
313		314		315	
316		317		318	
319		320		321	
322		323		324	
325		326		327	
328		329		330	
331		332		333	
334		335		336	
337		338		339	
340		341		342	
343		344		345	
346		347		348	
349		350		351	
352		353		354	
355		356		357	
358		359		360	
361		362		363	
364		365		366	
367		368		369	
370		371		372	
373		374		375	
376		377		378	
379		380		381	
382		383		384	
385		386		387	
388		389		390	
391		392		393	
394		395		396	
397		398		399	
400		401		402	
403		404		405	
406		407		408	
409		410		411	
412		413		414	
415		416		417	
418		419		420	
421		422		423	



GENERAL NOTES

1. WHERE A FREE CHLORINE / CHLORINE DIOXIDE SENSOR AND INJECTION PORT ARE INDICATED, CONTRACTOR SHALL INSTALL ON BOTH DOMESTIC COLD AND HOT WATER PIPING IN SAME ACCESSIBLE LOCATION.
2. INSTALL PALL-AQUASAFE FILTERS ON ALL PATIENT LAVATORIES AND SHOWERS.



CONSTRUCTION DOCUMENT SUBMISSION

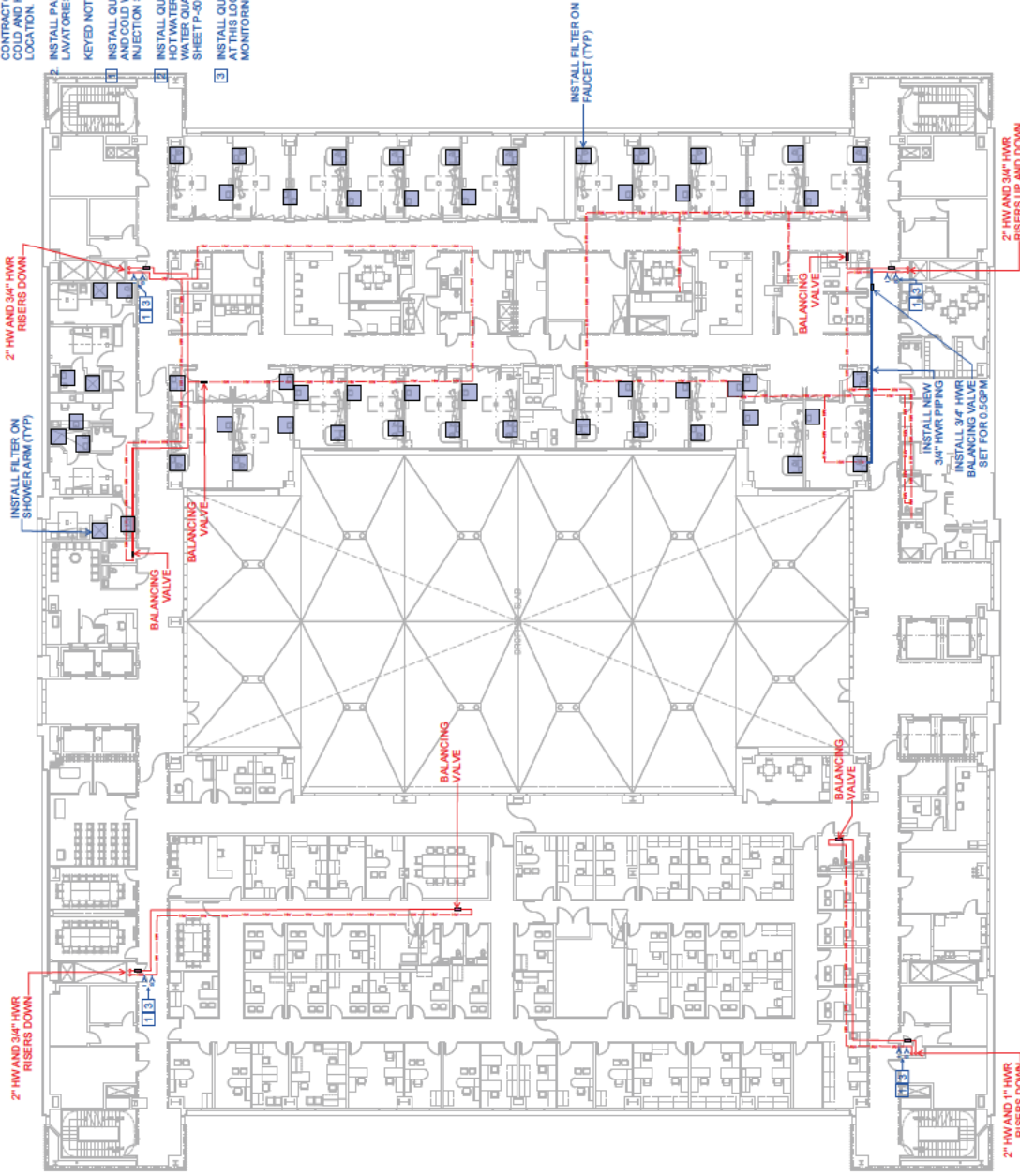
CONSULTANTS:		KEY PLAN	ARCHITECT/ENGINEERS:			PROJECT TITLE	PROJECT NUMBER	Office of Facilities Management
NAME 158 EAST CAMELBACK RD. SUITE 204 PHOENIX, AZ 85016 DATE DESCRIPTION LEGIONELLA PREVENTATIVE MEASURES PHOTOGRAPHIC LEGIONELLA PREVENTATIVE MEASURES LEGION								

GENERAL NOTES

1. WHERE AFREE CHLORINE / CHLORINE DIOXIDE SENSOR AND INJECTION PORT ARE INDICATED, CONTRACTOR SHALL INSTALL ON BOTH DOMESTIC COLD AND HOT WATER PIPING IN SAME ACCESSIBLE LOCATION.
2. INSTALL FALL-AQUASAFE FILTERS ON ALL PATIENT LAVATORIES AND SHOWERS.

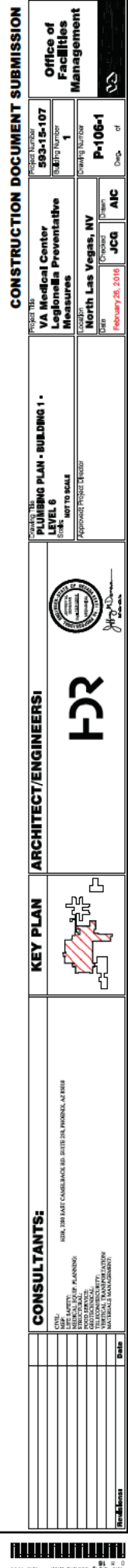
KEYED NOTES

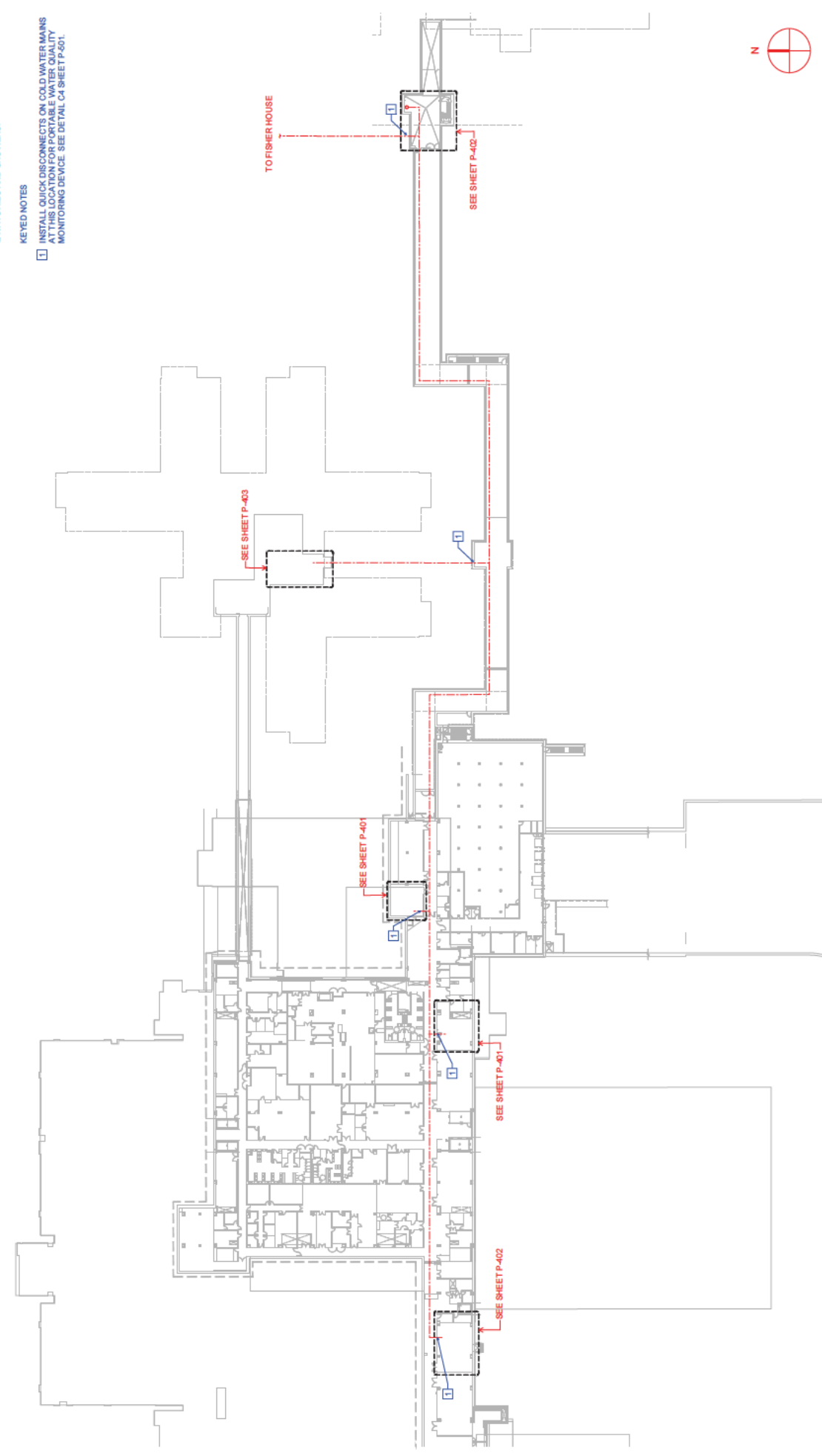
1. INSTALL QUICK DISCONNECTS ON HOT, HOT RETURN AND COLD WATER MAINS FOR PORTABLE CHLORINE INJECTION SYSTEM. SEE DETAIL C3 SHEET P-501.
2. INSTALL QUICK DISCONNECTS ON HOT RETURN AND HOT WATER MAINS AT THIS LOCATION FOR PORTABLE WATER QUALITY MONITORING DEVICE. SEE DETAIL C4 SHEET P-501.
3. INSTALL QUICK DISCONNECTS ON COLD WATER MAINS AT THIS LOCATION FOR PORTABLE WATER QUALITY MONITORING DEVICE. SEE DETAIL C4 SHEET P-501.



CONSTRUCTION DOCUMENT SUBMISSION

CONSULTANTS: NAME FIRM ADDRESS PHONE FAX E-MAIL PROJECT MANAGER DATE	ARCHITECT/ENGINEERS:  NAME FIRM ADDRESS PHONE FAX E-MAIL PROJECT MANAGER DATE	PROJECT TITLE: VA Medical Center Legionella Preventative Measures North Las Vegas, NV Date: February 28, 2016 Project: JCG AIC	PROJECT NO.: 993-15-107 Revision: 1 Drawing: P-105-1 Date: February 28, 2016 Project: JCG AIC	Office of Facilities Management 	KEY PLAN 	ARCHITECT/ENGINEERS: 	PROJECT TITLE: VA Medical Center Legionella Preventative Measures North Las Vegas, NV Date: February 28, 2016 Project: JCG AIC	PROJECT NO.: 993-15-107 Revision: 1 Drawing: P-105-1 Date: February 28, 2016 Project: JCG AIC	Office of Facilities Management 	CONSTRUCTION DOCUMENT SUBMISSION
---	--	--	---	---	--	--	--	---	---	---





GENERAL NOTES

1. WHERE A FREE CHLORINE / CHLORINE DIOXIDE SENSOR AND INJECTION PORT ARE INDICATED, CONTRACTOR SHALL INSTALL ON BOTH DOMESTIC COLD AND HOT WATER PIPING IN SAME ACCESSIBLE LOCATION.
2. INSTALL PALL-AQUASAFE FILTERS ON ALL PATIENT LAVATORIES AND SHOWERS.

KEYED NOTES

- 1** INSTALL QUICK DISCONNECTS ON COLD WATER MAINS AT THIS LOCATION FOR PORTABLE WATER QUALITY MONITORING DEVICE. SEE DETAIL C4 SHEET P-501.



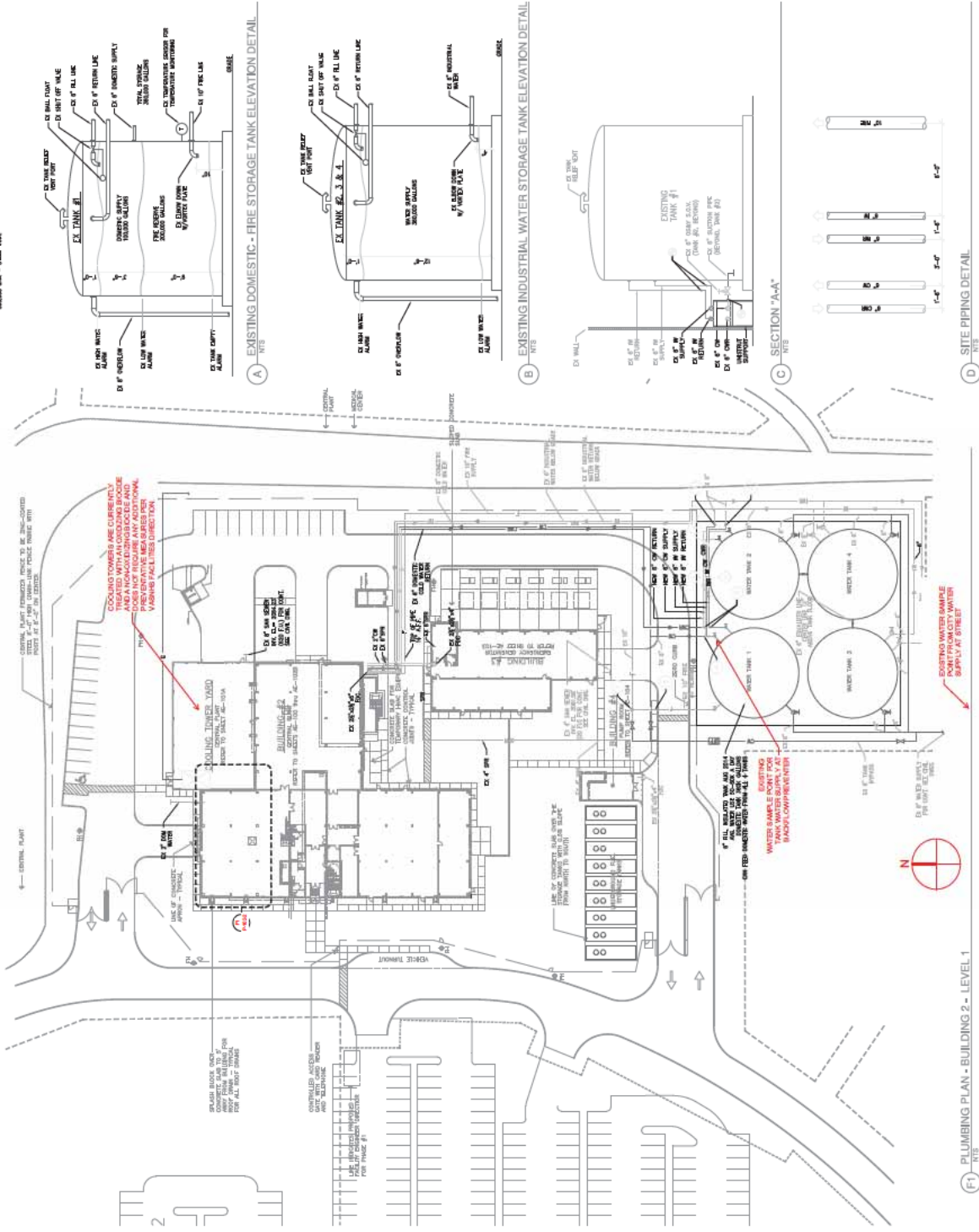
CONSTRUCTION DOCUMENT SUBMISSION

[illegible]

CONSIDERATIONS

1. CHILL INCOMING WATER TEMPERATURE FROM STORAGE TANK DOWN TO 67° F. DURING MONTHS WATER TEMPERATURE FROM CITY REACHES 88° F-75° F. RECENT SUMMER TEMPERATURES HAVE NOT EXCEEDED 88° F.
2. CONSIDER REVIEWING DOMESTIC WATER STORAGE TANK LEVELS WITH DOMESTIC WATER BOOSTER PUMP TO SHUT DOWN REVIEW BOOSTER PUMP SUCTON DESIGN.
3. CONSIDER REVIEWING STORAGE TANK FILL AND LEVELS AND CONTROLS TO PROVIDE MORE EFFICIENT TURN OVER IN THE TANK.
4. CONSIDER REVIEWING STORAGE TANK FILL AND SUCTON POINTS TO PROVIDE MORE TURBULENT FLOW THROUGHOUT THE TANK ON A CONSISTANT BASIS.

- NOTES:**
1. EXISTING TANK #1 - DOMESTIC WATER & FIRE TANK
 2. EXISTING TANK #2 - INDUSTRIAL WATER TANK
 3. EXISTING TANK #3 & 4 - INDUSTRIAL WATER TANKS
 4. EXISTING TANK #5 - INDUSTRIAL WATER TANK



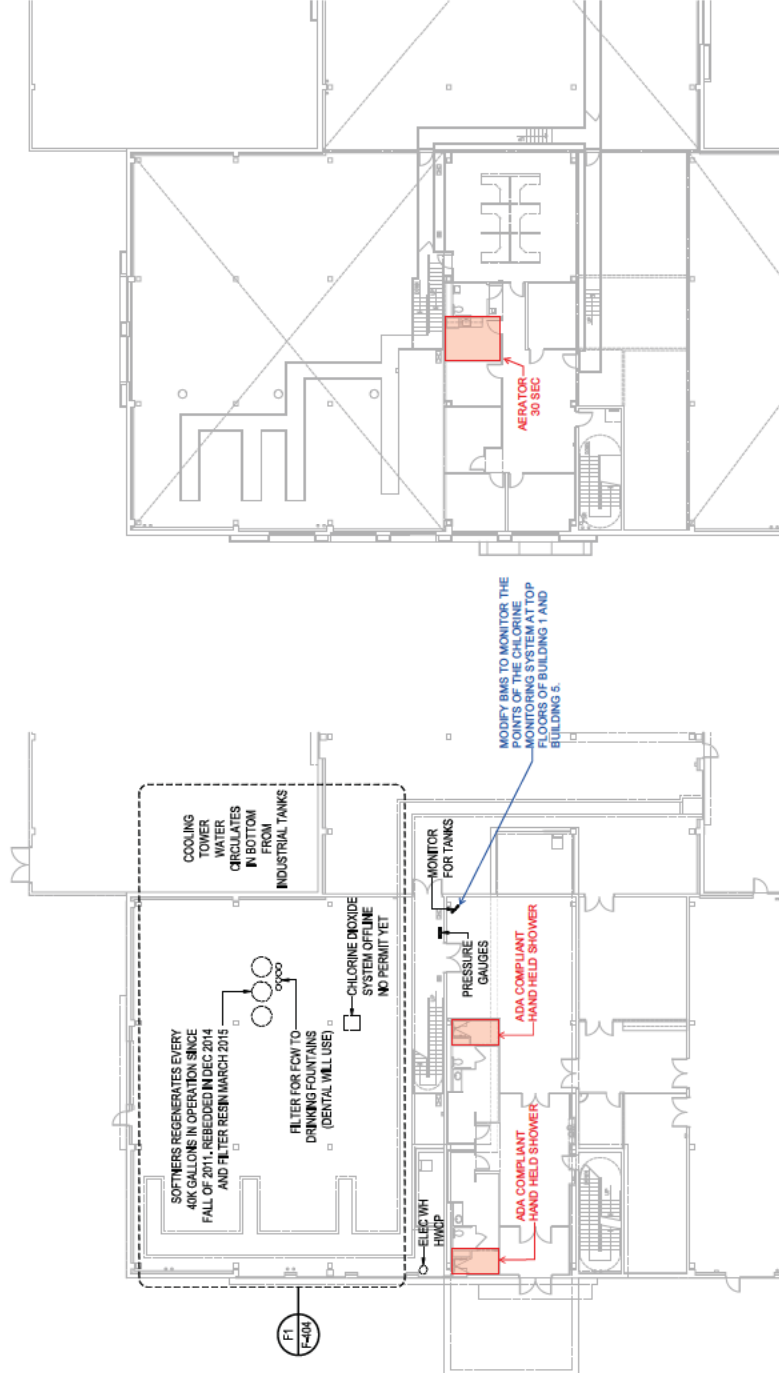
(D) SITE PIPING DETAIL

(F1) PLUMBING PLAN - BUILDING 2 - LEVEL 1

CONSULTANTS:		ARCHITECT/ENGINEERS:		CONSTRUCTION DOCUMENT SUBMISSION	
VA MEDICAL CENTER 503-15-107 2 P-101-2 February 28, 2016		VA Medical Center Legionella Preventative Measures North Las Vegas, NV JCG AIC February 28, 2016		Office of Facilities Management 503-15-107 2 P-101-2 February 28, 2016	
CONSULTANTS: VA MEDICAL CENTER 503-15-107 2 P-101-2 February 28, 2016		ARCHITECT/ENGINEERS: VA MEDICAL CENTER 503-15-107 2 P-101-2 February 28, 2016		CONSTRUCTION DOCUMENT SUBMISSION VA MEDICAL CENTER 503-15-107 2 P-101-2 February 28, 2016	

GENERAL NOTES

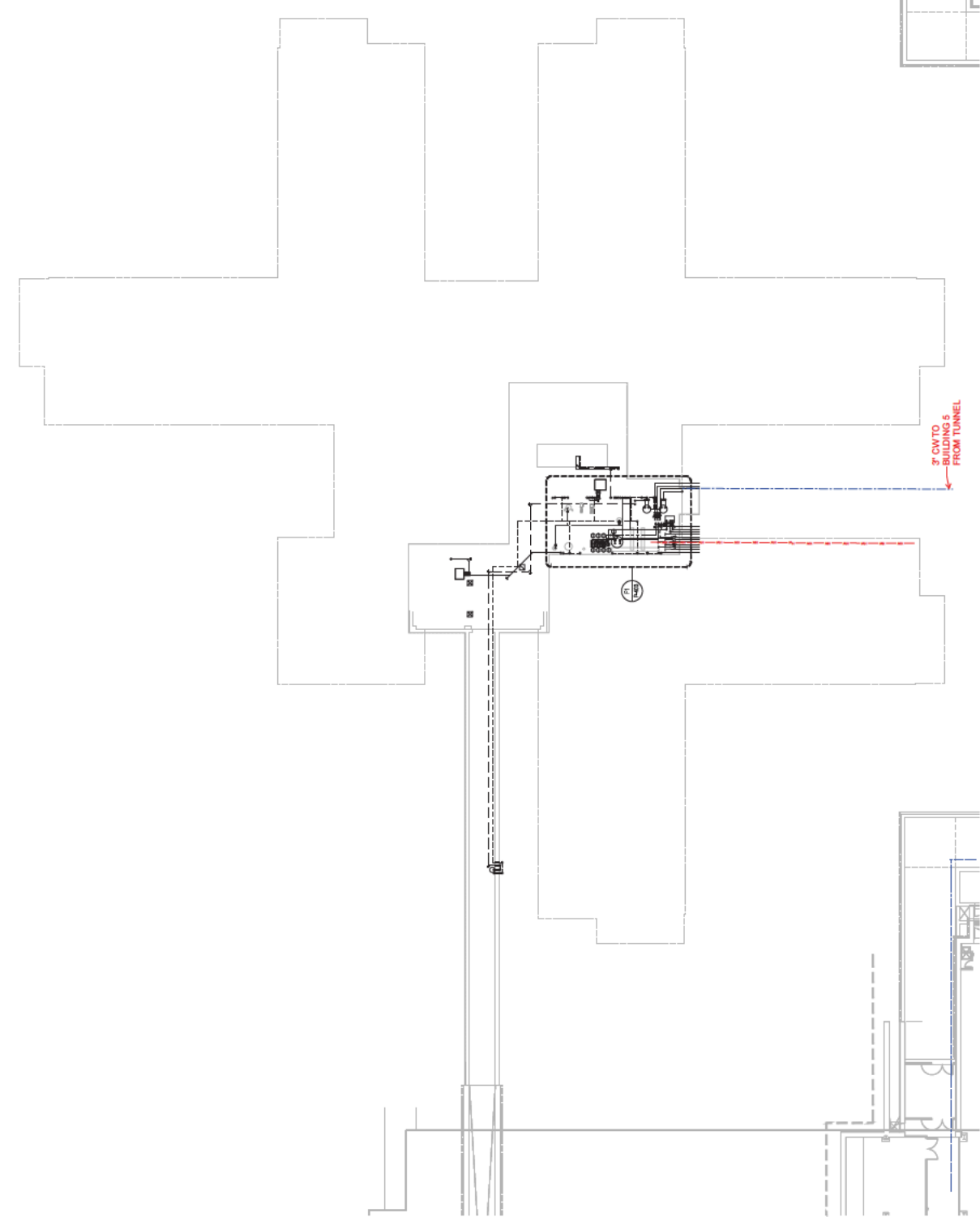
1. WHERE A FREE CHLORINE / CHLORINE DIOXIDE SENSOR AND INJECTION PORT ARE INDICATED, CIRCULATE WATER IN THE TANKS ON THE COLD AND HOT WATER PIPING IN SAME ACCESSIBLE LOCATION.
2. INSTALL PALL-AQUASAFE FILTERS ON ALL PATIENT LAVATORIES AND SHOWERS.



(F1) PLUMBING PLAN - BUILDING 2 - LEVEL 1

(F5) PLUMBING PLAN - BUILDING 2 - MEZZANINE

CONSULTANTS: NAME: [] TITLE: [] FIRM: [] PROJECT NO: [] DRAWING NO: [] DATE: [] BY: [] CHECKED: [] APPROVED: [] MATERIALS MANAGEMENT: []		KEY PLAN 	ARCHITECT/ENGINEERS: 	PROJECT TITLE: PLUMBING PLAN - BUILDING 2 - LEVEL 1 AND MEZZANINE SHEET NO: 2 APPROVED PROJECT OFFICIAL: []	PROJECT NO: 893-15-107 SHEET NO: 2 PROJECT NO: 893-15-107 SHEET NO: 2 PROJECT NO: 893-15-107 SHEET NO: 2	CONSTRUCTION DOCUMENT SUBMISSION PROJECT NO: 893-15-107 SHEET NO: 2 PROJECT NO: 893-15-107 SHEET NO: 2 PROJECT NO: 893-15-107 SHEET NO: 2
---	--	---------------------	---------------------------------	--	---	--



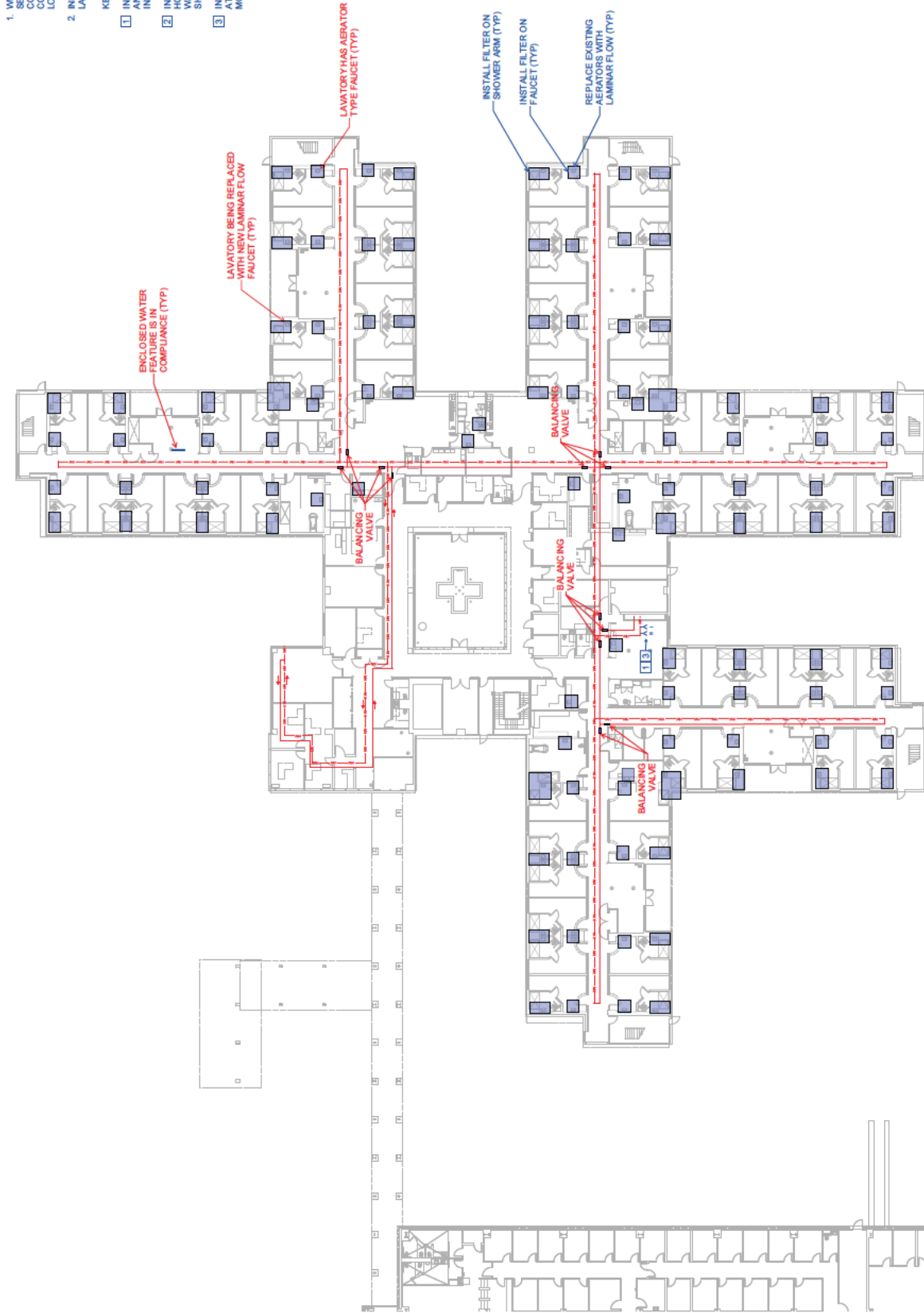
GENERAL NOTES

1. WHERE A FREE CHLORINE / CHLORINE DIOXIDE SENSOR AND INJECTION PORT ARE INDICATED, CONTRACTOR SHALL INSTALL ON BOTH DOMESTIC COLD AND HOT WATER PIPING IN SAME ACCESSIBLE LOCATION.
2. INSTALL PALL-AQUASAFE FILTERS ON ALL PATIENT LAVATORIES AND SHOWERS.



CONSTRUCTION DOCUMENT SUBMISSION

[illegible]



GENERAL NOTES

- 1. WHERE A FREE CHLORINE / CHLORINE DIOXIDE SENSOR AND INJECTION PORT ARE INDICATED, CONTRACTOR SHALL INSTALL ON BOTH DOMESTIC COLD AND HOT WATER PIPING IN SAME ACCESSIBLE LOCATION.
 - 2. INSTALL PALL-AQUASAFE FILTERS ON ALL PATIENT LAVATORIES AND SHOWERS.
- KEYED NOTES
- 1. INSTALL QUICK DISCONNECTS ON HOT, HOT RETURN AND COLD WATER MAINS FOR PORTABLE CHLORINE INJECTION SYSTEM. SEE DETAIL C3 SHEET P-501.
 - 2. INSTALL QUICK DISCONNECTS ON HOT RETURN AND COLD WATER MAINS FOR PORTABLE CHLORINE INJECTION SYSTEM. SEE DETAIL C4 SHEET P-501.
 - 3. INSTALL QUICK DISCONNECTS ON COLD WATER MAINS FOR PORTABLE CHLORINE INJECTION SYSTEM. SEE DETAIL C4 SHEET P-501.

CONSULTANTS:

DATE: 02/28/2019
BY: JCG
CHECKED: JCG
APPROVED: JCG

ARCHITECT/ENGINEERS:

F&R

PROJECT TITLE:

VA Medical Center
Legionella Preventative Measures
North Las Vegas, NV

PROJECT NUMBER:

898-15-107

CONTRACT NUMBER:

P-101-5

DATE:

February 28, 2019

BY:

JCG

CHECKED:

JCG

APPROVED:

AIC

CONSTRUCTION DOCUMENT SUBMISSION

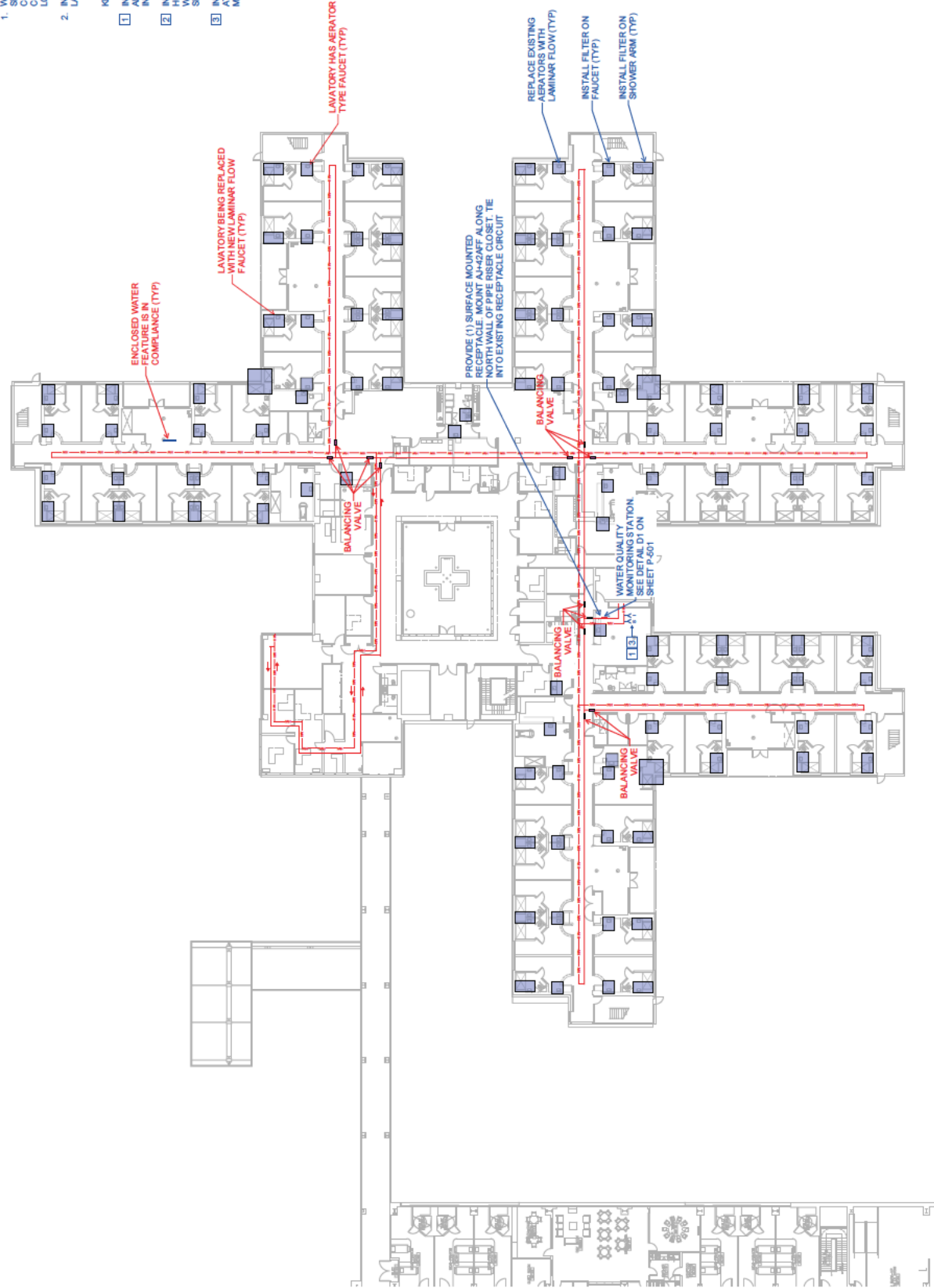
Office of Facilities Management

GENERAL NOTES

1. WHERE A FREE CHLORINE / CHLORINE DIOXIDE SENSOR AND INJECTION PORT ARE INDICATED, CONTRACTOR SHALL INSTALL ON BOTH DOMESTIC COLD AND HOT WATER PIPING IN SAME ACCESSIBLE LOCATION.
2. INSTALL ALL PALL-AQUASAFE FILTERS ON ALL PATIENT LAVATORIES AND SHOWERS.

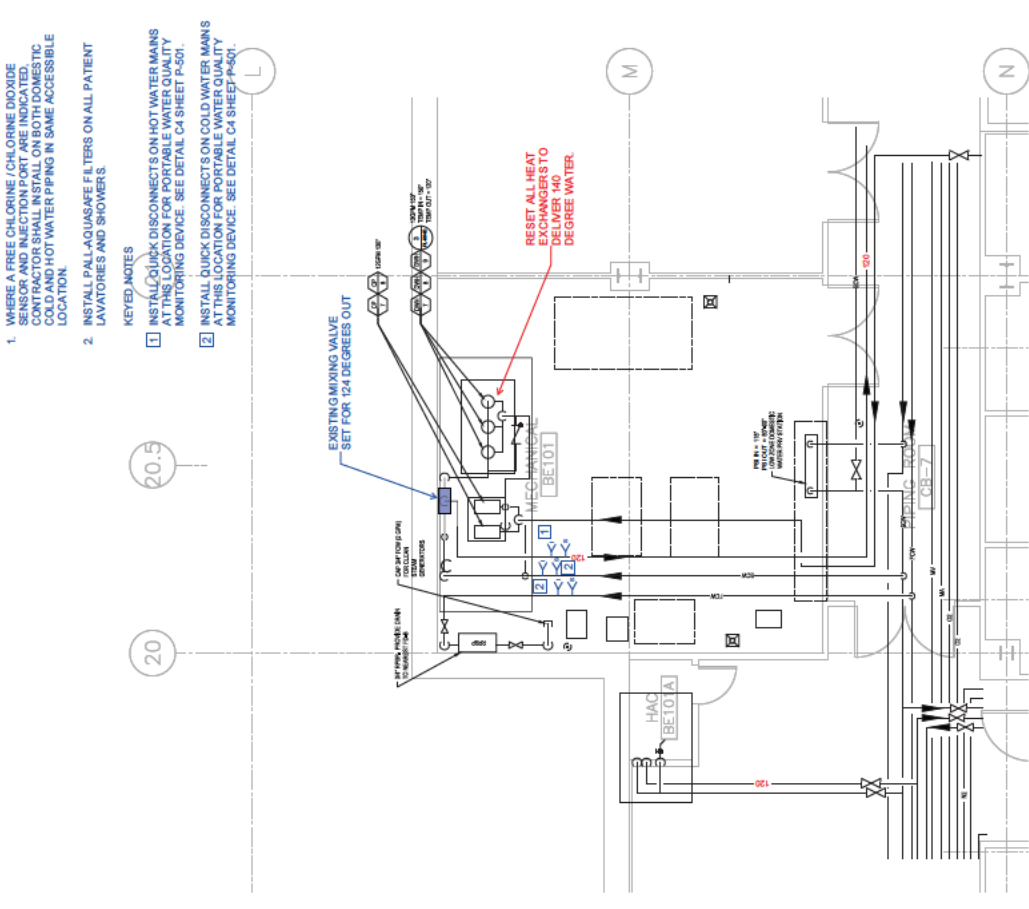
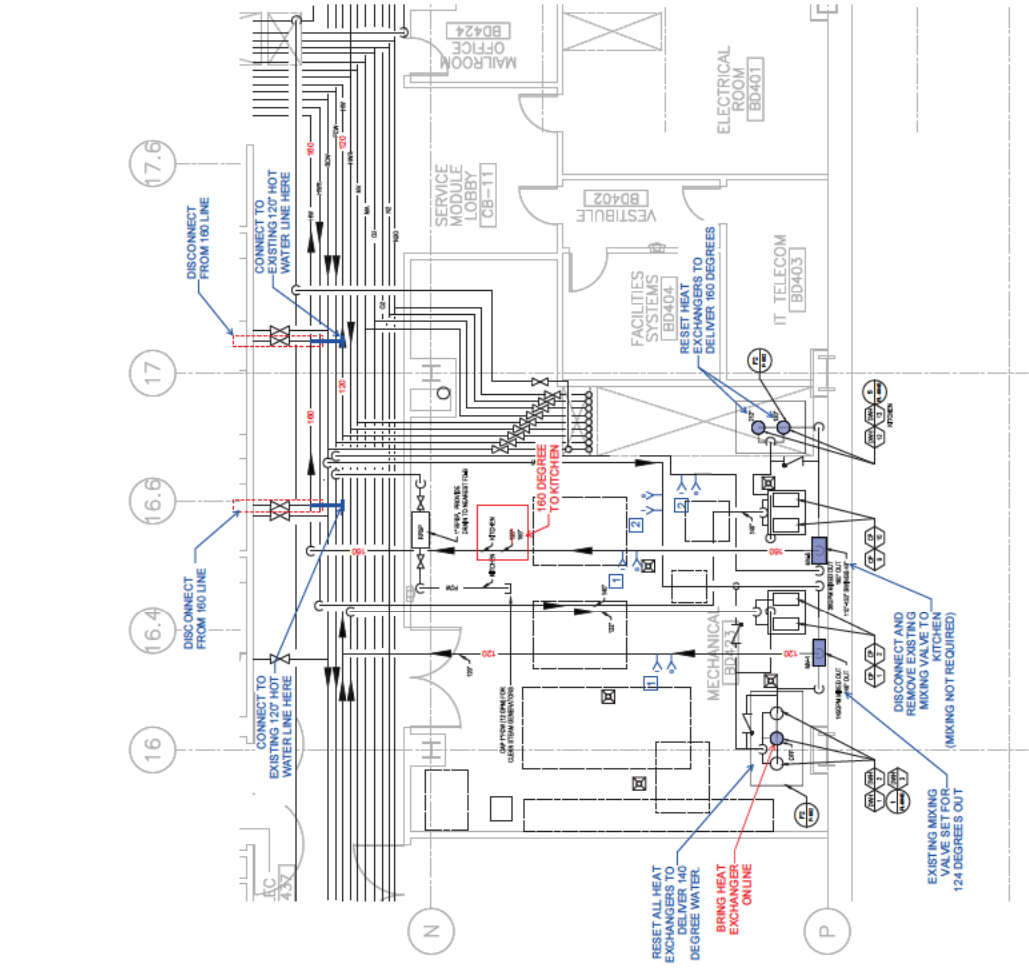
KEYED NOTES

1. INSTALL QUICK DISCONNECTS ON HOT, HOT RETURN AND COLD WATER MAINS FOR PORTABLE CHLORINE INJECTION SYSTEM. SEE DETAIL C4 SHEET P-501.
2. INSTALL QUICK DISCONNECTS ON HOT RETURN AND HOT WATER MAINS AT THIS LOCATION FOR PORTABLE WATER QUALITY MONITORING DEVICE. SEE DETAIL C4 SHEET P-501.
3. INSTALL QUICK DISCONNECTS ON COLD WATER MAINS AT THIS LOCATION FOR PORTABLE WATER QUALITY MONITORING DEVICE. SEE DETAIL C4 SHEET P-501.



CONSTRUCTION DOCUMENT SUBMISSION

Project Title VA Medical Center Legionella Preventative Measures		Project Number 993-15-107	Revision Number 5
Architect/Engineers HDR		Owner North Las Vegas, NV	Contract Number P-102-5
Key Plan 		Drawn JCG	Check AIC
Consultants: DATE: _____ BY: _____ REVIEW: _____ DATE: _____ BY: _____ REVIEW: _____ DATE: _____ BY: _____ REVIEW: _____		Date February 28, 2016	
Architect/Engineers: HDR		Office of Facilities Management	



F1 ENLARGED PLUMBING PLAN - BUILDING 1 - BASEMENT - MECHANICAL ROOM (BD423)
1/4" = 1'-0"

F6 ENLARGED PLUMBING PLAN - BUILDING 1 - BASEMENT - MECHANICAL ROOM (BE 101)
1/4" = 1'-0"



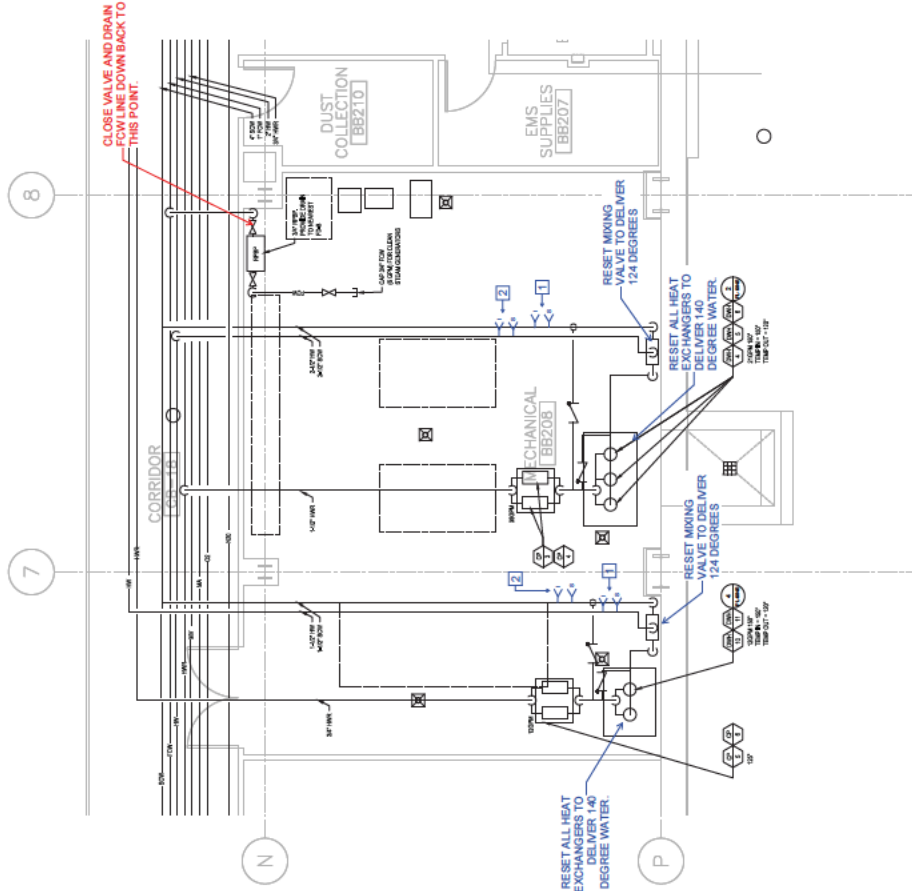
--	--	--	--	--	--	--	--	--	--	--	--	--	--	--	--	--	--	--	--	--	--	--	--	--	--	--	--	--	--	--	--	--	--	--	--	--	--	--	--	--	--	--	--	--	--	--	--	--	--	--	--	--	--	--	--	--	--	--	--	--	--	--	--	--	--	--	--	--	--	--	--	--	--	--	--	--	--	--	--	--	--	--	--	--	--	--	--	--	--	--	--	--	--	--	--	--	--	--	--	--	--	--	--	--	--	--	--	--	--	--	--	--	--	--	--	--	--	--	--	--	--	--	--	--	--	--	--	--	--	--	--	--	--	--	--	--	--	--	--	--	--	--	--	--	--	--	--	--	--	--	--	--	--	--	--	--	--	--	--	--	--	--	--	--	--	--	--	--	--	--	--	--	--	--	--	--	--	--	--	--	--	--	--	--	--	--	--	--	--	--	--	--	--	--	--	--	--	--	--	--	--	--	--	--	--	--	--	--	--	--	--	--	--	--	--	--	--	--	--	--	--	--	--	--	--	--	--	--	--	--	--	--	--	--	--	--	--	--	--	--	--	--	--	--	--	--	--	--	--	--	--	--	--	--	--	--	--	--	--	--	--	--	--	--	--	--	--	--	--	--	--	--	--	--	--	--	--	--	--	--	--	--	--	--	--	--	--	--	--	--	--	--	--	--	--	--	--	--	--	--	--	--	--	--	--	--	--	--	--	--	--	--	--	--	--	--	--	--	--	--	--	--	--	--	--	--	--	--	--	--	--	--	--	--	--	--	--	--	--	--	--	--	--	--	--	--	--	--	--	--	--	--	--	--	--	--	--	--	--	--	--	--	--	--	--	--	--	--	--	--	--	--	--	--	--	--	--	--	--	--	--	--	--	--	--	--	--	--	--	--	--	--	--	--	--	--	--	--	--	--	--	--	--	--	--	--	--	--	--	--	--	--	--	--	--	--	--	--	--	--	--	--	--	--	--	--	--	--	--	--	--	--	--	--	--	--	--	--	--	--	--	--	--	--	--	--	--	--	--	--	--	--	--	--	--	--	--	--	--	--	--	--	--	--	--	--	--	--	--	--	--	--	--	--	--	--	--	--	--	--	--	--	--	--	--	--	--	--	--	--	--	--	--	--	--	--	--	--	--	--	--	--	--	--	--	--	--	--	--	--	--	--	--	--	--	--	--	--	--	--	--	--	--	--	--	--	--	--	--	--	--	--	--	--	--	--	--	--	--	--	--	--	--	--	--	--	--	--	--	--	--	--	--	--	--	--	--	--	--	--	--	--	--	--	--	--	--	--	--	--	--	--	--	--	--	--	--	--	--	--	--	--	--	--	--	--	--	--	--	--	--	--	--	--	--	--	--	--	--	--	--	--	--	--	--	--	--	--	--	--	--	--	--	--	--	--	--	--	--	--	--	--	--	--	--	--	--	--	--	--	--	--	--	--	--	--	--	--	--	--	--	--	--	--	--	--	--	--	--	--	--	--	--	--	--	--	--	--	--	--	--	--	--	--	--	--	--	--	--	--	--	--	--	--	--	--	--	--	--	--	--	--	--	--	--	--	--	--	--	--	--	--	--	--	--	--	--	--	--	--	--	--	--	--	--	--	--	--	--	--	--	--	--	--	--	--	--	--	--	--	--	--	--	--	--	--	--	--	--	--	--	--	--	--	--	--	--	--	--	--	--	--	--	--	--	--	--	--	--	--	--	--	--	--	--	--	--	--	--	--	--	--	--	--	--	--	--	--	--	--	--	--	--	--	--	--	--	--	--	--	--	--	--	--	--	--	--	--	--	--	--	--	--	--	--	--	--	--	--	--	--	--	--	--	--	--	--	--	--	--	--	--	--	--	--	--	--	--	--	--	--	--	--	--	--	--	--	--	--	--	--	--	--	--	--	--	--	--	--	--	--	--	--	--	--	--	--	--	--	--	--	--	--	--	--	--	--	--	--	--	--	--	--	--	--	--	--	--	--	--	--	--	--	--	--	--	--	--	--	--	--	--	--	--	--	--	--	--	--	--	--	--	--	--	--	--	--	--	--	--	--	--	--	--	--	--	--	--	--	--	--	--	--	--	--	--	--	--	--	--	--	--	--	--	--	--	--	--	--	--	--	--	--	--	--	--	--	--	--	--	--	--	--	--	--	--	--	--	--	--	--	--	--	--	--	--	--	--	--	--	--	--	--	--	--	--	--	--	--	--	--	--	--	--	--	--	--	--	--	--	--	--	--	--	--	--	--	--	--	--	--	--	--	--	--	--	--	--	--	--	--	--	--	--	--	--	--	--	--	--	--	--	--	--	--	--	--	--	--	--	--	--	--	--	--	--	--	--	--	--	--	--	--	--	--	--	--	--	--	--	--	--	--	--	--	--	--	--	--	--	--	--	--	--	--	--	--	--	--	--	--	--	--	--	--	--	--	--	--	--	--	--	--	--	--	--	--	--	--	--	--	--	--	--	--	--	--	--	--	--	--	--	--	--	--	--	--	--	--	--	--	--	--	--	--	--	--	--	--	--	--	--	--	--	--	--	--	--	--	--	--	--	--	--	--	--	--	--	--	--	--	--	--	--	--	--	--	--	--	--	--	--	--	--	--	--	--	--	--	--	--	--	--	--	--	--	--	--	--	--	--	--	--	--	--	--	--	--	--	--	--	--	--	--	--	--	--	--	--	--	--	--	--	--	--	--	--	--	--	--	--	--	--	--	--	--	--	--	--	--	--	--	--	--	--	--	--	--	--	--	--	--	--	--	--	--	--	--	--	--	--	--	--	--	--	--	--	--	--	--	--	--	--	--	--	--	--	--	--	--	--	--	--	--	--	--	--	--	--	--	--	--	--	--	--	--	--	--	--	--	--	--	--	--	--	--	--	--	--	--	--	--	--	--	--	--	--	--	--	--	--	--	--	--	--	--	--	--	--	--	--	--	--	--	--	--	--	--	--	--	--	--	--	--	--	--	--	--	--	--	--	--	--	--	--	--	--	--	--	--	--	--	--	--	--	--	--	--	--	--	--	--	--	--	--	--	--	--	--	--	--	--	--	--	--	--	--	--	--	--	--	--	--	--	--	--	--	--	--	--	--	--	--	--	--	--	--

GENERAL NOTES

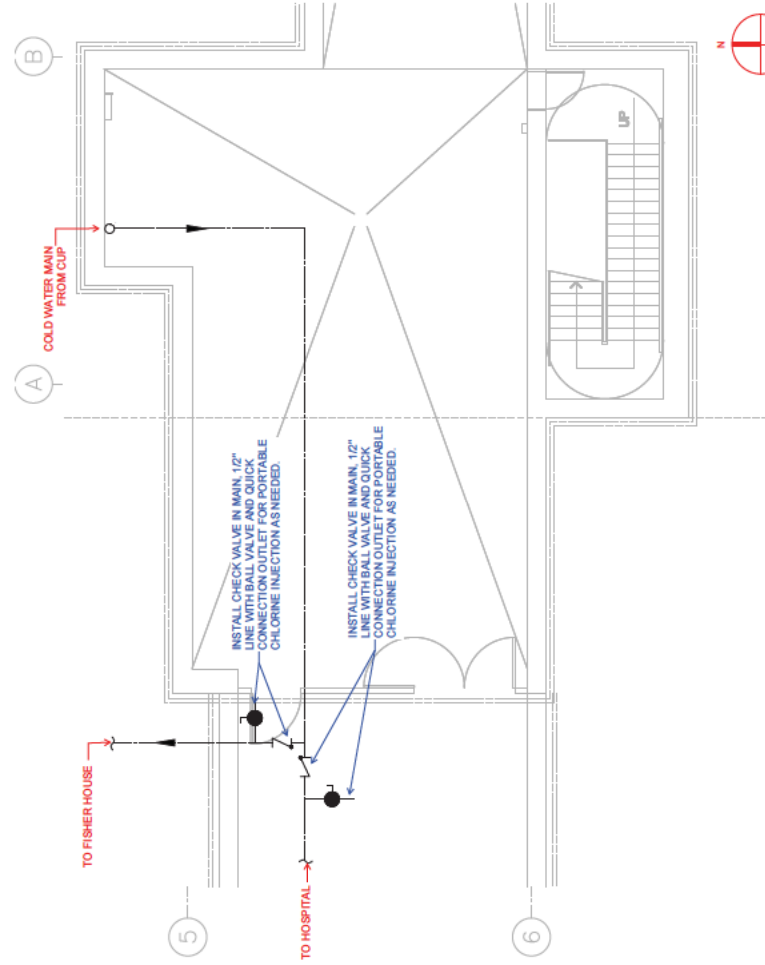
1. WHERE A FREE CHLORINE / CHLORINE DIOXIDE SENSOR AND INJECTION PORT ARE INDICATED, CONTRACTOR SHALL INSTALL ON BOTH DOMESTIC COLD AND HOT WATER PIPING IN SAME ACCESSIBLE LOCATION.
2. INSTALL PALL-AQUASAFE FILTERS ON ALL PATIENT LAVATORIES AND SHOWERS.

KEYED NOTES

1. INSTALL QUICK DISCONNECTS ON HOT WATER MAINS AT THIS LOCATION FOR PORTABLE WATER QUALITY MONITORING DEVICE. SEE DETAIL C4 SHEET P-501.
2. INSTALL QUICK DISCONNECTS ON COLD WATER MAINS AT THIS LOCATION FOR PORTABLE WATER QUALITY MONITORING DEVICE. SEE DETAIL C4 SHEET P-501.

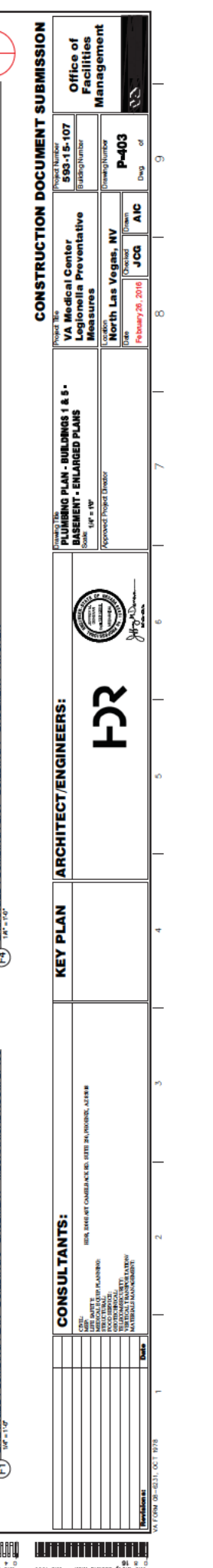


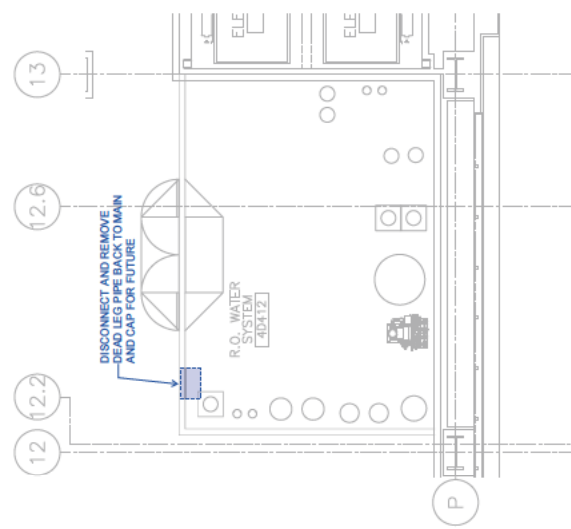
(F1) ENLARGED PLUMBING PLAN - BUILDING 1 - BASEMENT - MECHANICAL ROOM (BB208)
1/8" = 1'-0"



(F2) ENLARGED PLUMBING PLAN - BUILDING 2 - BASEMENT
1/8" = 1'-0"

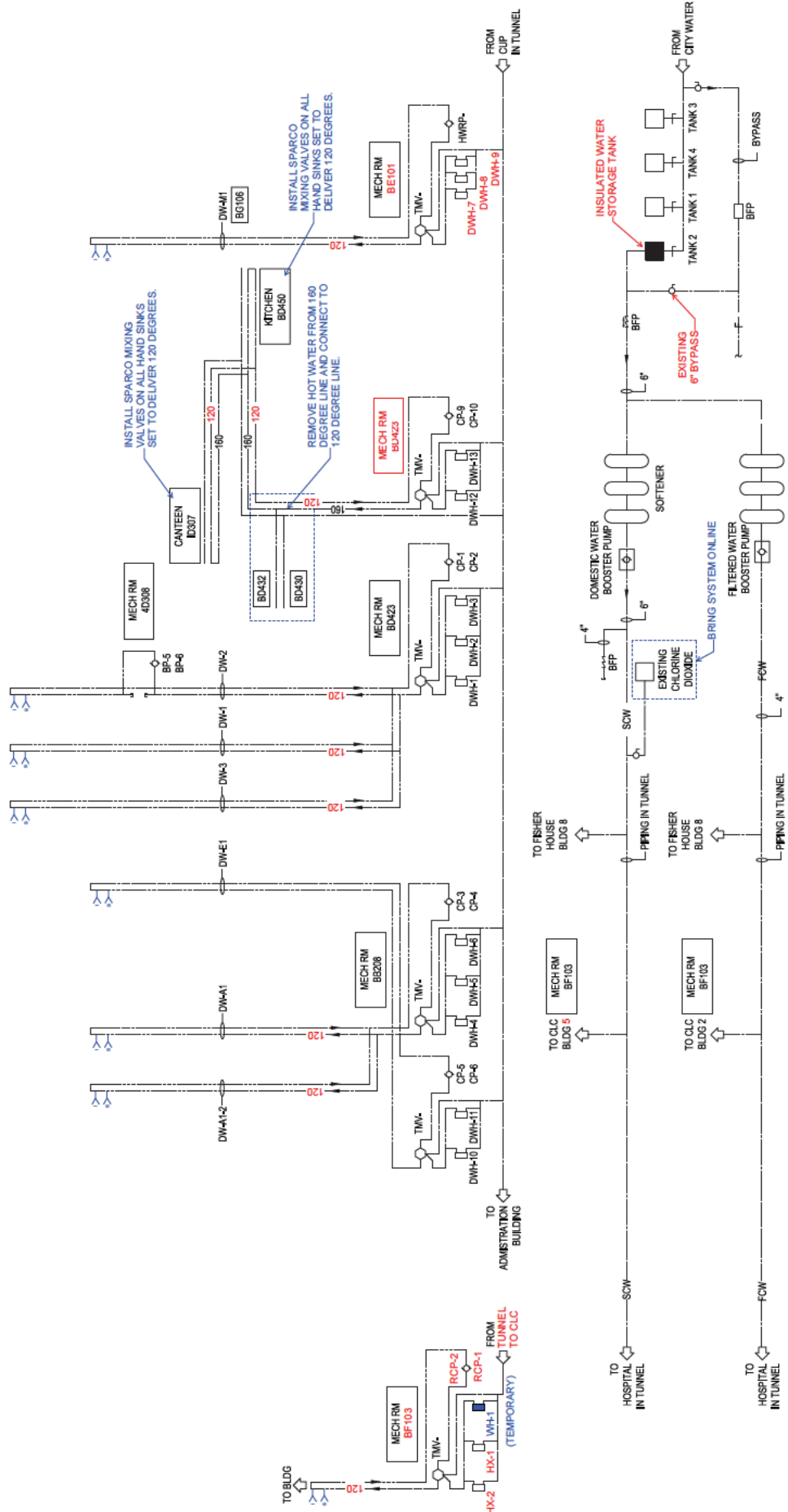
CONSULTANTS:				ARCHITECT/ENGINEERS:				CONSTRUCTION DOCUMENT SUBMISSION			
NAME	DATE	REVISION	DESCRIPTION	NAME	DATE	REVISION	DESCRIPTION	Project Title	Project Number	Sheet Number	Sheet of
VA Medical Center	15-107			VA Medical Center	15-107			VA Medical Center	15-107	P-402	1 of 1
LEGIONELLA PREVENTATIVE MEASURES				LEGIONELLA PREVENTATIVE MEASURES				North Las Vegas, NV			
DATE	2016			DATE	2016			Approved Project Director	Checked	Drawn	Proj. of
									JCG	AIC	
SEE EAST CAMBERGERS, AFTER 24 PROJECT, AC 818				Office of Facilities Management							





F7 ENLARGED PLUMBING PLAN - BUILDING 1 - LEVEL 4 - R.O. WATER SYSTEM (4D412)
1/4" = 1'-0"

[illegible]



CONSTRUCTION DOCUMENT SUBMISSION

KEY PLAN	ARCHITECT/ENGINEERS:
-----------------	-----------------------------

PLUMBING DIAGRAM

CONSTRUCTION DOCUMENT SUBMISSION



CONSULTANTS:

CIVIL
JAMES H. BARNETT
MEDICAL GROUP OF PLANNING
10000 WILSON AVENUE
SUITE 100
FARMINGTON, CT 06031
FOOD SERVICE
JAMES H. BARNETT
TELECOMMUNITY
VERTICAL TRANSPORTATION
VERTICAL MANAGEMENT

			ARCHITECT/ENGINEERS	H-31
--	--	--	----------------------------	-------------

	APPROVED PROJECT MASTER _____ DATE _____
--	--

Project Title	Project Number	Office of Facilities Management
VA Medical Center Legionella Preventative Measures	593-15-107	
Location	Contract Number	
North Las Vegas, NV	P-602	
Date	Created	Drawn
February 20, 2016	JCG	AIC
		Dep. of

THERMOSTATIC MIXING VALVE SCHEDULE										
MARK	SERIES	COUNTRY	STANDARD	LUBING METHOD	MAX. GPM	MAX. PRESSURE (PSI)	PRV TYPE		TEMPERATURE RANGE	REMARKS
							MAX. FLOW	MAX. CLOSURE		
1000A	1000A-115	USA	15	15	1	22	1"	1"	122	
1000B	1000B-115	USA	15	15	1	22	1"	1"	122	
1000C	1000C-115	USA	15	15	1	22	1"	1"	122	
1000D	1000D-115	USA	15	15	1	22	1"	1"	122	
1000E	1000E-115	USA	15	15	1	22	1"	1"	122	
1000F	1000F-115	USA	15	15	1	22	1"	1"	122	
1000G	1000G-115	USA	15	15	1	22	1"	1"	122	
1000H	1000H-115	USA	15	15	1	22	1"	1"	122	
1000I	1000I-115	USA	15	15	1	22	1"	1"	122	
1000J	1000J-115	USA	15	15	1	22	1"	1"	122	
1000K	1000K-115	USA	15	15	1	22	1"	1"	122	
1000L	1000L-115	USA	15	15	1	22	1"	1"	122	
1000M	1000M-115	USA	15	15	1	22	1"	1"	122	
1000N	1000N-115	USA	15	15	1	22	1"	1"	122	
1000O	1000O-115	USA	15	15	1	22	1"	1"	122	
1000P	1000P-115	USA	15	15	1	22	1"	1"	122	
1000Q	1000Q-115	USA	15	15	1	22	1"	1"	122	
1000R	1000R-115	USA	15	15	1	22	1"	1"	122	
1000S	1000S-115	USA	15	15	1	22	1"	1"	122	
1000T	1000T-115	USA	15	15	1	22	1"	1"	122	
1000U	1000U-115	USA	15	15	1	22	1"	1"	122	
1000V	1000V-115	USA	15	15	1	22	1"	1"	122	
1000W	1000W-115	USA	15	15	1	22	1"	1"	122	
1000X	1000X-115	USA	15	15	1	22	1"	1"	122	
1000Y	1000Y-115	USA	15	15	1	22	1"	1"	122	
1000Z	1000Z-115	USA	15	15	1	22	1"	1"	122	

NOTES: 1. ON WALL, ACCORDING TO JOHN HENSON
2. HAVILL, ACCORDING TO HAVILL REQUIREMENTS
3. HAVILL, ACCORDING TO HAVILL REQUIREMENTS
4. HAVILL, ACCORDING TO HAVILL REQUIREMENTS
5. HAVILL, ACCORDING TO HAVILL REQUIREMENTS
6. HAVILL, ACCORDING TO HAVILL REQUIREMENTS
7. HAVILL, ACCORDING TO HAVILL REQUIREMENTS
8. HAVILL, ACCORDING TO HAVILL REQUIREMENTS
9. HAVILL, ACCORDING TO HAVILL REQUIREMENTS
10. HAVILL, ACCORDING TO HAVILL REQUIREMENTS
11. HAVILL, ACCORDING TO HAVILL REQUIREMENTS
12. HAVILL, ACCORDING TO HAVILL REQUIREMENTS
13. HAVILL, ACCORDING TO HAVILL REQUIREMENTS
14. HAVILL, ACCORDING TO HAVILL REQUIREMENTS
15. HAVILL, ACCORDING TO HAVILL REQUIREMENTS
16. HAVILL, ACCORDING TO HAVILL REQUIREMENTS
17. HAVILL, ACCORDING TO HAVILL REQUIREMENTS
18. HAVILL, ACCORDING TO HAVILL REQUIREMENTS
19. HAVILL, ACCORDING TO HAVILL REQUIREMENTS
20. HAVILL, ACCORDING TO HAVILL REQUIREMENTS
21. HAVILL, ACCORDING TO HAVILL REQUIREMENTS
22. HAVILL, ACCORDING TO HAVILL REQUIREMENTS
23. HAVILL, ACCORDING TO HAVILL REQUIREMENTS
24. HAVILL, ACCORDING TO HAVILL REQUIREMENTS
25. HAVILL, ACCORDING TO HAVILL REQUIREMENTS
26. HAVILL, ACCORDING TO HAVILL REQUIREMENTS
27. HAVILL, ACCORDING TO HAVILL REQUIREMENTS
28. HAVILL, ACCORDING TO HAVILL REQUIREMENTS
29. HAVILL, ACCORDING TO HAVILL REQUIREMENTS
30. HAVILL, ACCORDING TO HAVILL REQUIREMENTS
31. HAVILL, ACCORDING TO HAVILL REQUIREMENTS
32. HAVILL, ACCORDING TO HAVILL REQUIREMENTS
33. HAVILL, ACCORDING TO HAVILL REQUIREMENTS
34. HAVILL, ACCORDING TO HAVILL REQUIREMENTS
35. HAVILL, ACCORDING TO HAVILL REQUIREMENTS
36. HAVILL, ACCORDING TO HAVILL REQUIREMENTS
37. HAVILL, ACCORDING TO HAVILL REQUIREMENTS
38. HAVILL, ACCORDING TO HAVILL REQUIREMENTS
39. HAVILL, ACCORDING TO HAVILL REQUIREMENTS
40. HAVILL, ACCORDING TO HAVILL REQUIREMENTS
41. HAVILL, ACCORDING TO HAVILL REQUIREMENTS
42. HAVILL, ACCORDING TO HAVILL REQUIREMENTS
43. HAVILL, ACCORDING TO HAVILL REQUIREMENTS
44. HAVILL, ACCORDING TO HAVILL REQUIREMENTS
45. HAVILL, ACCORDING TO HAVILL REQUIREMENTS
46. HAVILL, ACCORDING TO HAVILL REQUIREMENTS
47. HAVILL, ACCORDING TO HAVILL REQUIREMENTS
48. HAVILL, ACCORDING TO HAVILL REQUIREMENTS
49. HAVILL, ACCORDING TO HAVILL REQUIREMENTS
50. HAVILL, ACCORDING TO HAVILL REQUIREMENTS
51. HAVILL, ACCORDING TO HAVILL REQUIREMENTS
52. HAVILL, ACCORDING TO HAVILL REQUIREMENTS
53. HAVILL, ACCORDING TO HAVILL REQUIREMENTS
54. HAVILL, ACCORDING TO HAVILL REQUIREMENTS
55. HAVILL, ACCORDING TO HAVILL REQUIREMENTS
56. HAVILL, ACCORDING TO HAVILL REQUIREMENTS
57. HAVILL, ACCORDING TO HAVILL REQUIREMENTS
58. HAVILL, ACCORDING TO HAVILL REQUIREMENTS
59. HAVILL, ACCORDING TO HAVILL REQUIREMENTS
60. HAVILL, ACCORDING TO HAVILL REQUIREMENTS
61. HAVILL, ACCORDING TO HAVILL REQUIREMENTS
62. HAVILL, ACCORDING TO HAVILL REQUIREMENTS
63. HAVILL, ACCORDING TO HAVILL REQUIREMENTS
64. HAVILL, ACCORDING TO HAVILL REQUIREMENTS
65. HAVILL, ACCORDING TO HAVILL REQUIREMENTS
66. HAVILL, ACCORDING TO HAVILL REQUIREMENTS
67. HAVILL, ACCORDING TO HAVILL REQUIREMENTS
68. HAVILL, ACCORDING TO HAVILL REQUIREMENTS
69. HAVILL, ACCORDING TO HAVILL REQUIREMENTS
70. HAVILL, ACCORDING TO HAVILL REQUIREMENTS
71. HAVILL, ACCORDING TO HAVILL REQUIREMENTS
72. HAVILL, ACCORDING TO HAVILL REQUIREMENTS
73. HAVILL, ACCORDING TO HAVILL REQUIREMENTS
74. HAVILL, ACCORDING TO HAVILL REQUIREMENTS
75. HAVILL, ACCORDING TO HAVILL REQUIREMENTS
76. HAVILL, ACCORDING TO HAVILL REQUIREMENTS
77. HAVILL, ACCORDING TO HAVILL REQUIREMENTS
78. HAVILL, ACCORDING TO HAVILL REQUIREMENTS
79. HAVILL, ACCORDING TO HAVILL REQUIREMENTS
80. HAVILL, ACCORDING TO HAVILL REQUIREMENTS
81. HAVILL, ACCORDING TO HAVILL REQUIREMENTS
82. HAVILL, ACCORDING TO HAVILL REQUIREMENTS
83. HAVILL, ACCORDING TO HAVILL REQUIREMENTS
84. HAVILL, ACCORDING TO HAVILL REQUIREMENTS
85. HAVILL, ACCORDING TO HAVILL REQUIREMENTS
86. HAVILL, ACCORDING TO HAVILL REQUIREMENTS
87. HAVILL, ACCORDING TO HAVILL REQUIREMENTS
88. HAVILL, ACCORDING TO HAVILL REQUIREMENTS
89. HAVILL, ACCORDING TO HAVILL REQUIREMENTS
90. HAVILL, ACCORDING TO HAVILL REQUIREMENTS
91. HAVILL, ACCORDING TO HAVILL REQUIREMENTS
92. HAVILL, ACCORDING TO HAVILL REQUIREMENTS
93. HAVILL, ACCORDING TO HAVILL REQUIREMENTS
94. HAVILL, ACCORDING TO HAVILL REQUIREMENTS
95. HAVILL, ACCORDING TO HAVILL REQUIREMENTS
96. HAVILL, ACCORDING TO HAVILL REQUIREMENTS
97. HAVILL, ACCORDING TO HAVILL REQUIREMENTS
98. HAVILL, ACCORDING TO HAVILL REQUIREMENTS
99. HAVILL, ACCORDING TO HAVILL REQUIREMENTS
100. HAVILL, ACCORDING TO HAVILL REQUIREMENTS

[illegible][illegible]