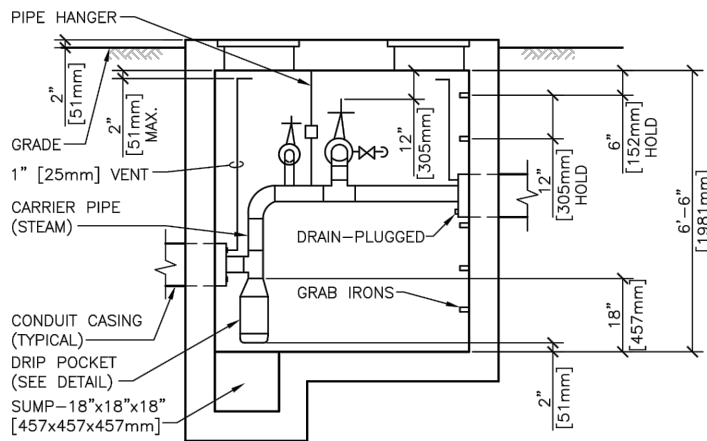


PLAN VIEW



SECTION

NOTES

1. The work shall be in accordance with the specifications, rules and regulations of the VA.
2. Dimensions are minimum unless otherwise noted.
3. Contractor shall provide licensed engineer's drawing, stamped for review. Structural design, ventilation and drainage shall be reference Army Technical Manual, TM-5-810-7 and City of Sheridan, WY 2016 Specification Book Section 02722 .
4. Minimum Floor Space 6' x 6'.
5. Allowable passive lateral earth pressure = 200 psf/ft as referenced in Terracon's Geotechnical Engineering Report dated Aug 14, 2016. Terracon Project # 26155024. All geotechnical recommendations for backfill shall apply.
6. Contractor shall field verify condition of existing tunnel connection and elevations.



E & A CONSULTING GROUP, INC.
Engineering Answers

E & A CONSULTING GROUP, INC.

Engineering • Planning • Environmental & Field Services
10909 Mill Valley Road Suite 100 Omaha, NE 68154 Phone: 402.895.4700 Fax: 402.895.3599

Job No.: 2014.417.001

Date: 3/14/2017

Drawn by: TMW

NTD

Sht: 1 of 1

CONCRETE STEAM VAULT
SHORT-STAY GERI-PSYCH ADDITION
VAMC - SHERIDAN, WY