

VA FORM 08-6231

A

B

C

D

E

F

A

B

C

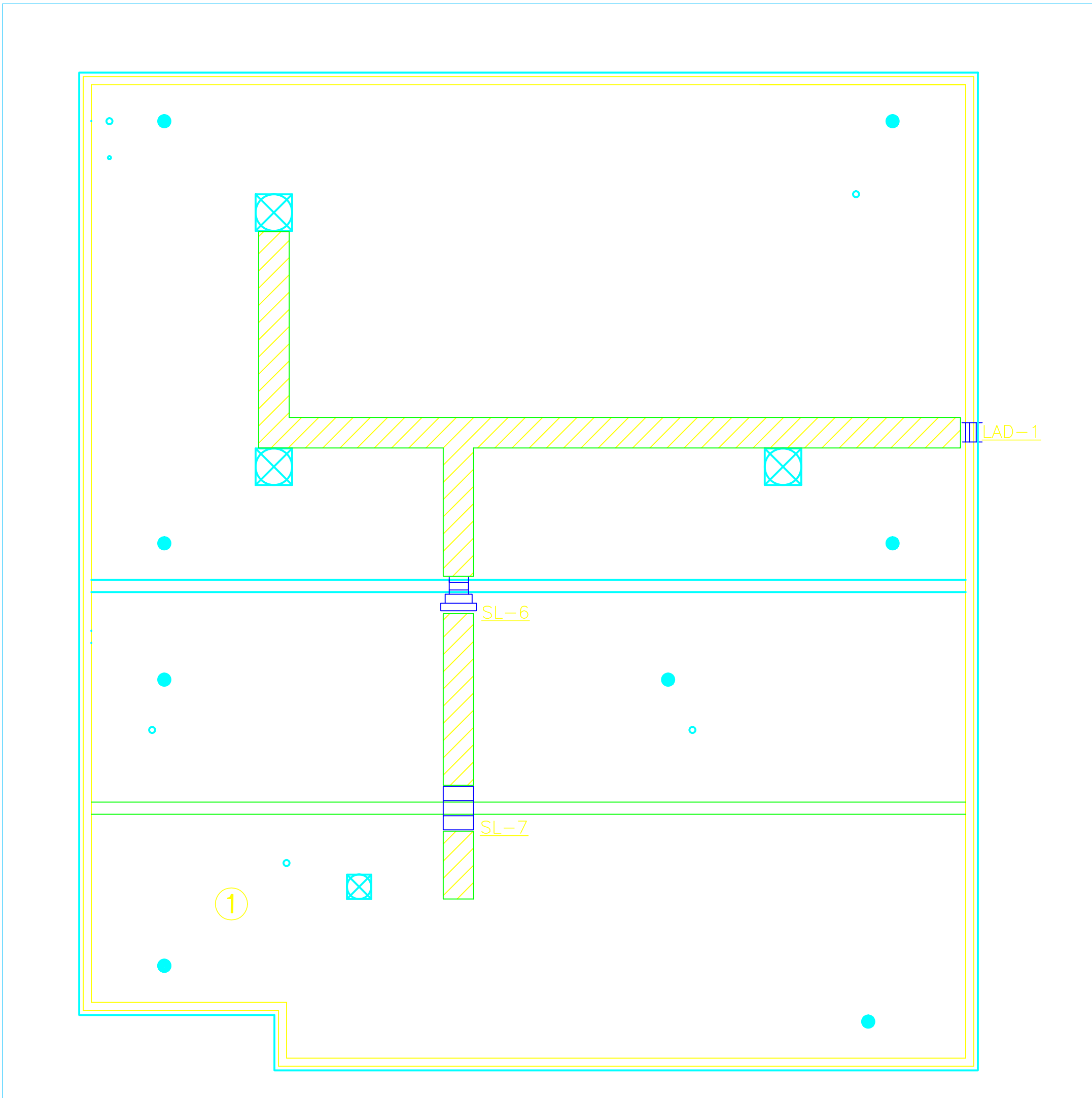
D

E



F

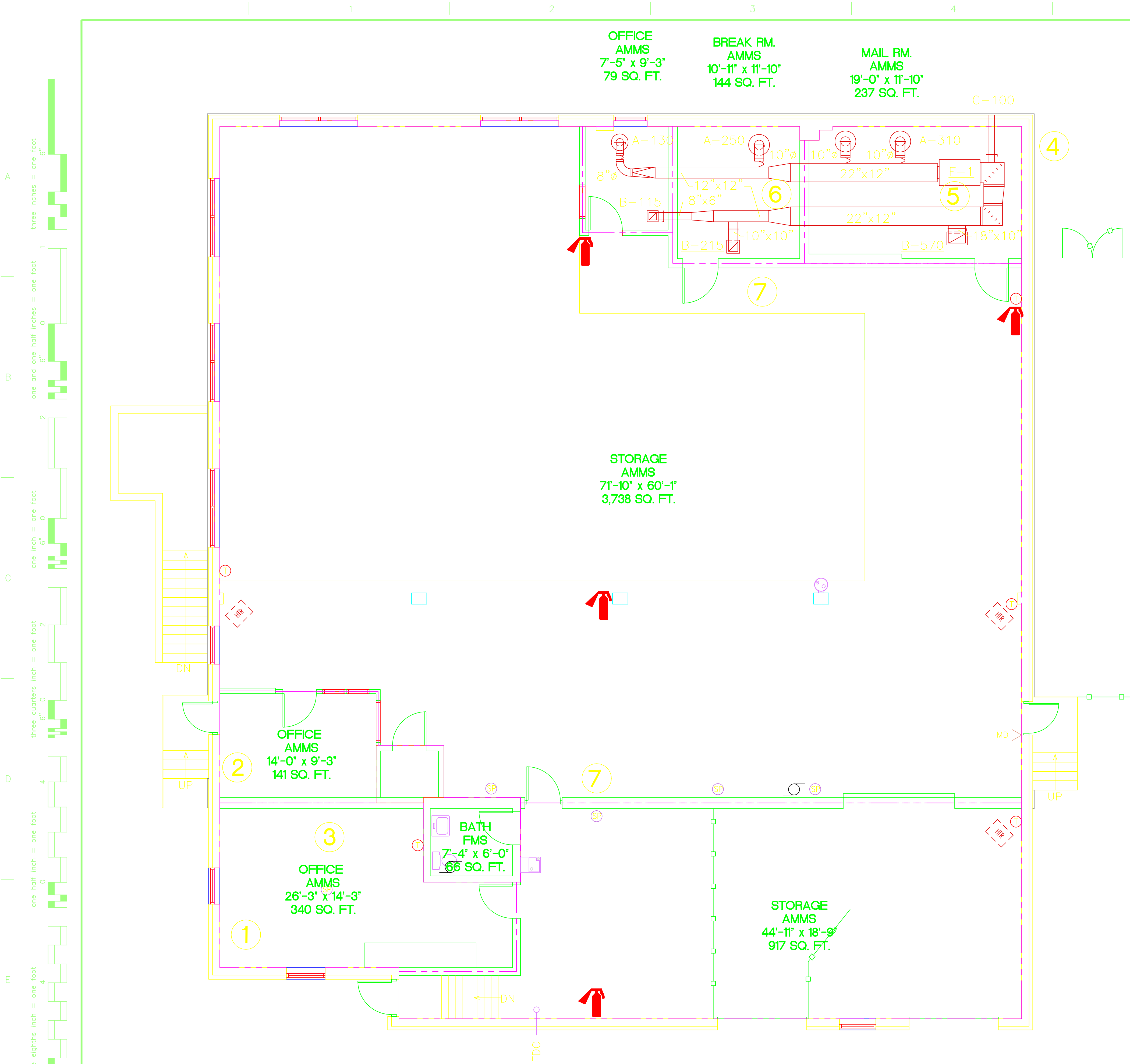
- GENERAL NOTES**
(APPLIES TO ALL ROOF AREAS UNLESS NOTED OTHERWISE)
1. NOTIFY VA PROJECT MANAGER FOR ANY UTILITY AND/OR EQUIPMENT SHUTDOWNS.
 2. CURRENT ROOF IS A MIXTURE OF PVC AND MODIFIED BITUMEN ROOF, PROJECT CURRENTLY TO CHANGE ROOF TO ALL PVC. IT IS THE CONTRACTORS RESPONSIBILITY TO PATCH ROOF WITH SAME MATERIAL, WITH A CERTIFIED INSTALLER TO KEEP THE GOVERNMENT'S ROOF WARRANTY.
 3. REFER TO DRAWING 1A-701 FOR DETAILS.
 4. REFERENCED DETAILS ARE NOTED PER CONDITION AND ALL OTHERS SHALL BE CONSIDERED TYPICAL AMONG RELATED CONDITIONS.

- KEY NOTES:**
1. INSTALL CONDENSING UNIT ON ROOF TO CONNECT TO EVAPORATORS SPECIFIED IN KEY NOTES 1 & 2. CONDENSING UNIT IS GFE, MODEL NUMBER: MXZ-2AZONA, SERIAL NUMBER: 7000026, REFRIGERANT 410A, VOLTS ~~208~~, 1 PHASE, NEW LINE KIT NEEDED. RESPONSIBILITY OF CONTRACTOR TO GET UNIT ON ROOF AND RUN ELECTRICAL TO ROOF. ALL ELECTRICAL AND REFRIGERATION LINES SHALL BE TAKEN THROUGH THE ROOF. CONTRACTOR MUST ALSO SEAL ALL ROOF PENETRATIONS. IT IS THE CONTRACTORS RESPONSIBILITY TO PICKUP CONDENSING UNIT FROM FMS AND PLACE ON ROOF.



BUILDING 9 - ROOF PLAN
SCALE: 1/8"=1'-0"

		CONSULTANTS:				ARCHITECT/ENGINEERS:		Drawing Title BUILDING 9 ROOF PLAN		Project Title Building 9 A/C		Project Number 655-11-122		Office of Construction and Facilities Management  Department of Veterans Affairs	
						 Department of Veterans Affairs Aleda E Lutz Medical Center 1500 Weiss Street Saginaw, MI 48602				Building Number 9					
								Approved Project Director		Location Aleda E. Lutz Saginaw VAMC		Drawing Number 9A-101			
										Date 01/31/2		Checked WLM			
Revisions		Date										Dwg 2 of 10			



BUILDING #9, 1st Floor

GENERAL NOTES

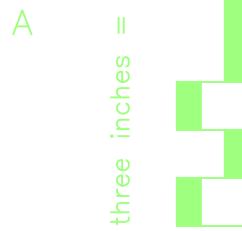
1. INSULATE SUPPLY AND RETURN DUCT WITH 1" INSULATION
2. PIPE DRAIN PAN PIPING TO OUTSIDE
3. ALL EXISTING SPRINKLER HEADS, PIPES, ALARMS, ETC. ARE TO REMAIN INTACT FOR USE AFTER RENOVATION. SPRINKLER SYSTEM SHALL REMAIN IN OPERATION THROUGHOUT PERIOD OF WORK. CONTRACTOR SHALL ENSURE THAT NO DAMAGE IS DONE TO EXISTING SPRINKLER SYSTEM.
4. CONTRACTOR SHALL BE RESPONSIBLE FOR ANY DAMAGE TO EXISTING SURFACE FINISHES (DRYWALL, PAINT, ETC.), EXISTING CASEWORK AND FURNITURE, FLOORING, ETC.
5. ALL ELBOWS IN DUCTWORK SHALL BE LONG RADIUS. RECTANGULAR ELBOWS SHALL BE SUPPLIED WITH TURNING VANES.
6. ALL NEW GRILLES, AND DIFFUSERS, FANS, SHALL BE TESTED AND BALANCED AS PART OF THIS WORK.
7. ALL FANS SUBMITTED, PURCHASED, INSTALLED, ETC. SHALL BE CAPABLE OF 110% OF INDICATED CFM AND PRESSURE CAPACITIES LISTED ON DRAWINGS AND IN SCHEDULES, PER VA REQUIREMENTS.
8. ALL DUCT WORK RUNS SHOWN ARE REPRESENTATIVE ONLY. CONTRACTOR SHALL BE RESPONSIBLE FOR ANY CONDITIONS IN THE FIELD (EXISTING, OR PREDICATED BY LOCATION OF NEW EQUIPMENT) THAT MAKE NECESSARY ALTERNATE ROUTING OF DUCTWORK.
9. MECHANICAL CONTRACTOR SHALL COORDINATE WITH ELECTRICAL CONTRACTOR TO PROVIDE POWER CONNECTIONS FOR ALL EQUIPMENT INCLUDING, BUT NOT LIMITED TO: SPLIT SYSTEMS, CONDENSING UNITS, FANS, , ETC.
10. IT IS THE RESPONSIBILITY OF THE CONTRACTOR TO COMPLETE ALL WORK NECESSARY TO MAKE THIS A WORKING SYSTEM. INCLUDING BUT NOT LIMITED TOO, MECHANICAL, ELECTRICAL, MASONRY, ROOFING AND CARPENTRY.
11. SEE EQUIPMENT SCHEDULE DRAWING 9A-701

KEY NOTES

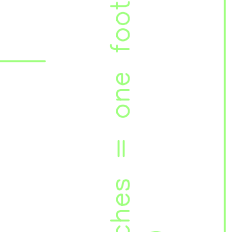
1. INSTALL EVAPORATOR (THIS WILL BE GOVERNMENT FURNISHED EQUIPMENT (GFE))
MODEL NUMBER: MSZ – A09NA : SERIAL NUMBER: 6019611 , VOLTS ²⁰⁸/₂₃₀ 1 PHASE.
CONTRACTOR MUST BRICK IN EXISTING HOLE LEFT BY WINDOW AC UNIT.
NEW DRAIN MUST RUN OUTSIDE AND DOWN WALL.RESPONSIBILITY OF CONTRACTOR TO GET UNIT TO WAREHOUSE FROM MAIN BUILDING.
2. INSTALL EVAPORATOR (THIS WILL BE GFE)
MODEL NUMBER: MSZ – A09NA : SERIAL NUMBER: 6019611 , VOLTS ²⁰⁸/₂₃₀ 1 PHASE
CONTRACTOR MUST BRICK IN EXISTING HOLE LEFT BY WINDOW AC UNIT.
NEW DRAIN MUST RUN OUTSIDE AND DOWN WALL. RESPONSIBILITY OF CONTRACTOR TO GET UNIT TO WAREHOUSE FROM MAIN BUILDING.
3. INSTALL CONDENSING UNIT ON ROOF TO CONNECT TO EVAPORATORS SPECIFIED IN KEY NOTES 1 & 2. CONDENSING UNIT IS GFE, MODEL NUMBER: MXZ-2AZONA,
SERIAL NUMBER; 7000026, REFRIGERANT 410A, VOLTS ²⁰⁸/₂₃₀, 1 PHASE, NEW LINE KIT NEEDED.
RESPONSIBILITY OF CONTRACTOR TO GET UNIT ON ROOF AND RUN ELECTRICAL TO ROOF.
ALL ELECTRICAL AND REFRIGERATION LINES SHALL BE TAKEN THROUGH THE ROOF
CONTRACTOR MUST ALSO SEAL ALL ROOF PENETRATIONS.
4. UNIT WILL BE PLACED ON EXISTING CONCRETE SLAB, UNIT MUST BE MOUNTED 3 FEET ABOVE GROUND FOR EASIER MAINTENANCE.
5. INSTALL AT LEAST A 6 FOOT DIAMETER GRATE, MAKING MAINTENANCE OF UNIT EASIER.
6. INSTALL INSULATION OF AT LEAST R19 QUALITY OVER ALL THREE ROOMS.
7. APPROXIMATE EXISTING ELECTRICAL PANEL LOCATION.

<div>Revisions</div> <div>Date</div>		CONSULTANTS:		ARCHITECT/ENGINEERS:		<div>Drawing Title</div> <div>Building 9 First Floor</div>		<div>Project Title</div> <div>Building 9 A/C</div>		<div>Project Number</div> <div>655-11-122</div>		<div>Office of Construction and Facilities Management</div> <div>Department of Veterans Affairs</div>	
				<div>Approved Project Director</div>		<div>Location</div> <div>Aleda E. Lutz Saginaw VAMC</div>		<div>Building Number</div> <div>9</div>					
						<div>Date</div> <div>01/31/12</div>		<div>Checked</div> <div>KSR</div>		<div>Dwg. 9 of 10</div>			

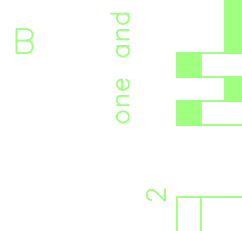
A



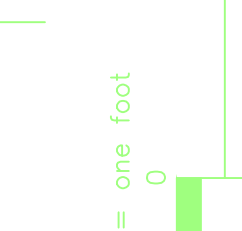
B



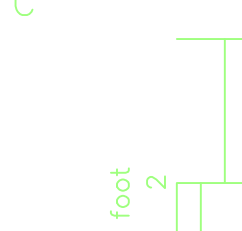
C



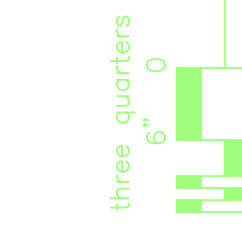
D



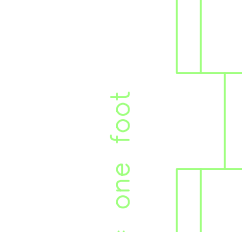
E



F



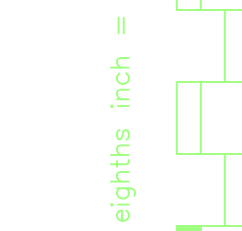
G



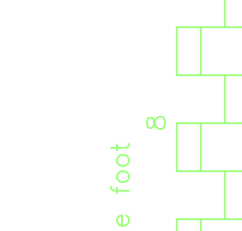
H



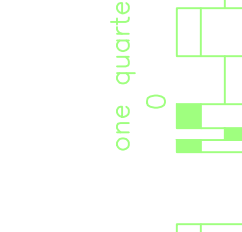
I



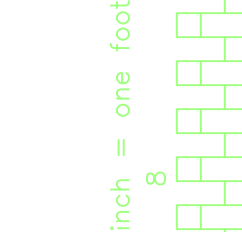
J



K



L



CONSULTANTS:

ARCHITECT/ENGINEERS:



Department of Veterans Affairs
Aleda E Lutz Medical Center
1500 Weiss Street
Saginaw, MI 48602

Drawing Title
DETAILS AND SCHEDULE

Approved Project Director

Project Title
Building 9 A/C

Project Number
655-11-122

Building Number
9

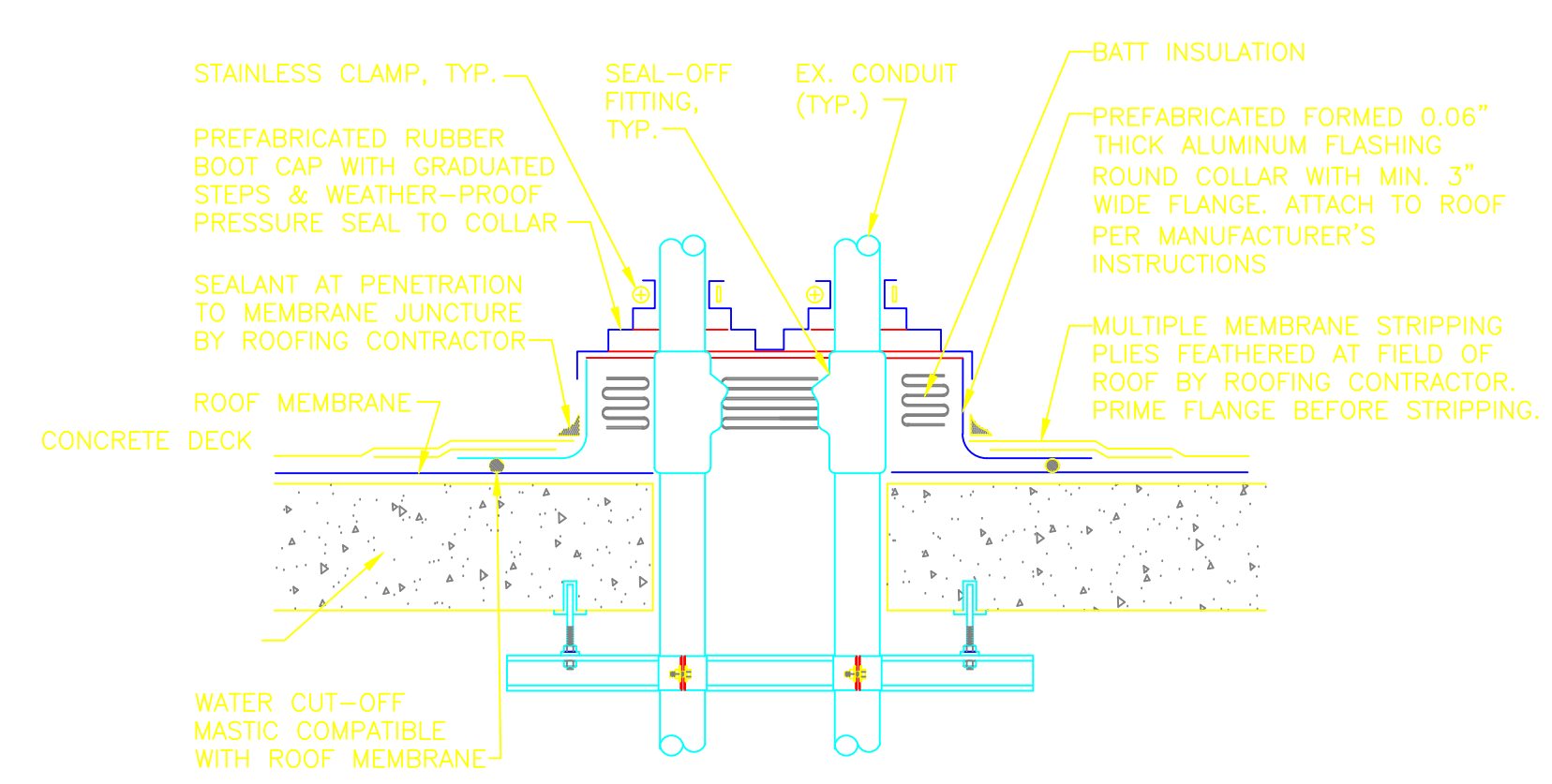
Drawing Number
1A-701

Date
01/31/2

Checked
KSR

Drawn
WLM

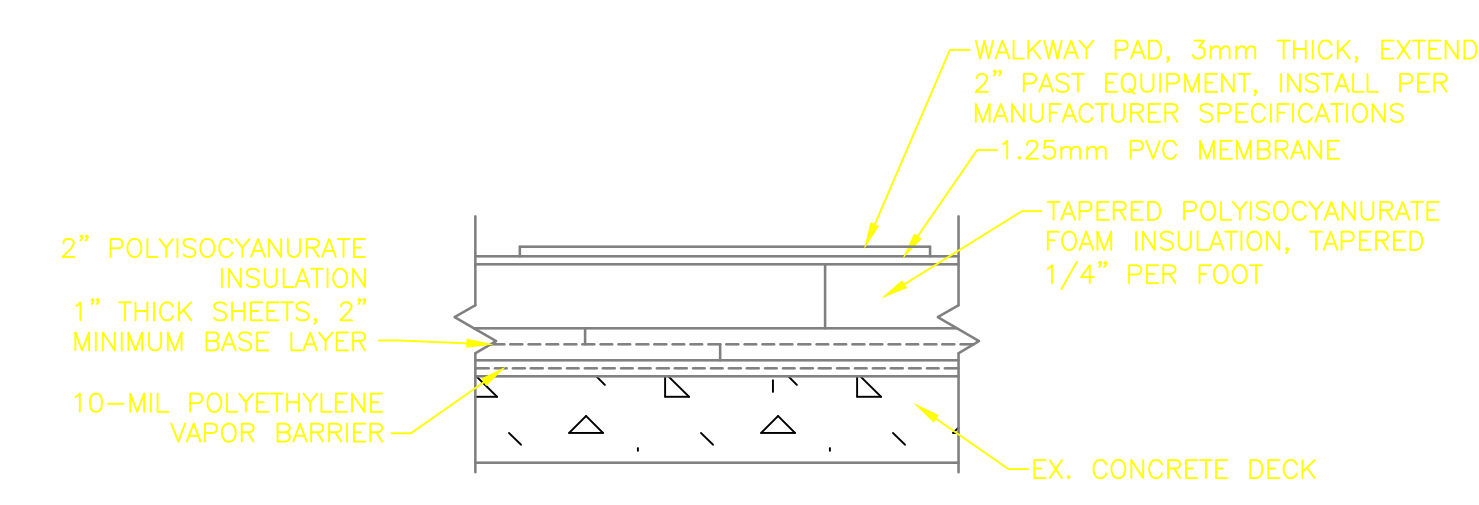
Office of
Construction
and Facilities
Management



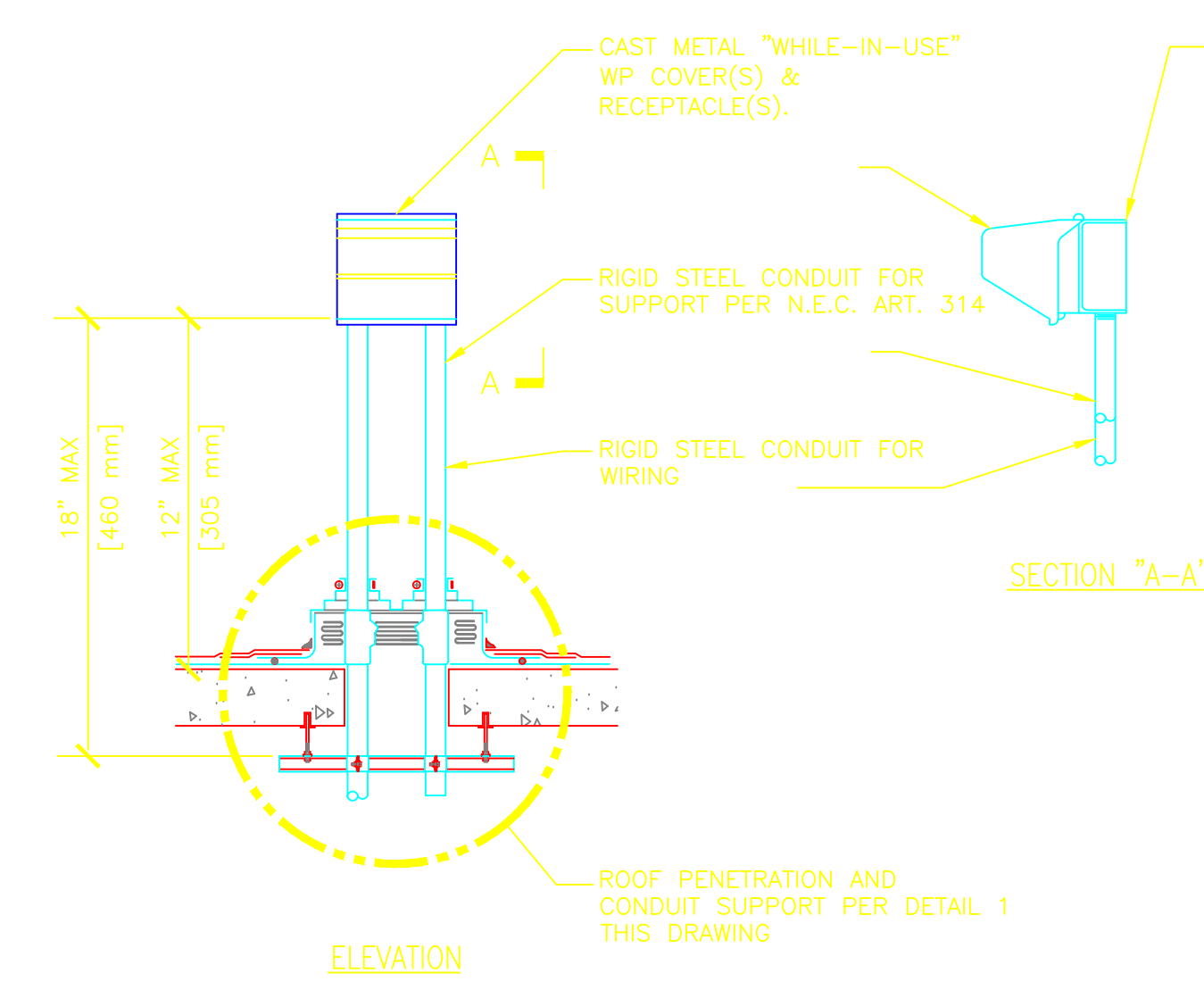
GENERAL NOTES:

1. FLANGES OF ADJACENT FLASHINGS SHALL NOT BE CUT OR OVERLAPPED.
2. COORDINATE FLASHING INSTALLATION TO ENSURE PROPER METHODS & MATERIALS ARE USED TO MAINTAIN ROOF WARRANTY.

1 PIPE PENETRATION DETAIL
SCALE: NOT TO SCALE



2 EQUIPMENT ROOF PLACEMENT
(WALKWAY PADS)



3 RECEPTACLE ROOF MOUNTING DETAIL

SCHEDULE:

A-XXX PRICE, RCD DIFFUSERS, DAMPER, WHITE POWDER COAT. 130 (8\"/>

B-XXX PRICE, 530 GRILLE, DAMPER, WHITE POWDER COAT. 115 (8\"/>

C-XXX OUTDOOR AIR INTAKE, 6\", HOOD, INSECT SCREEN, MANSARD BROWN.

F-1 TRANE, BCHC HORIZ BLOWER, 024 SIZE, SS DRAIN PAN, 1000 CFM, 0.5 IN STATIC, 2.5 TON DX COIL & CONDENSER (LOCATE ON ROOF), MERV 13 FILTERS (INCLUDE 3 CHANGES OF FILTERS), 7 DAY PROGRAMMABLE THERMOSTAT, 208/60/1.