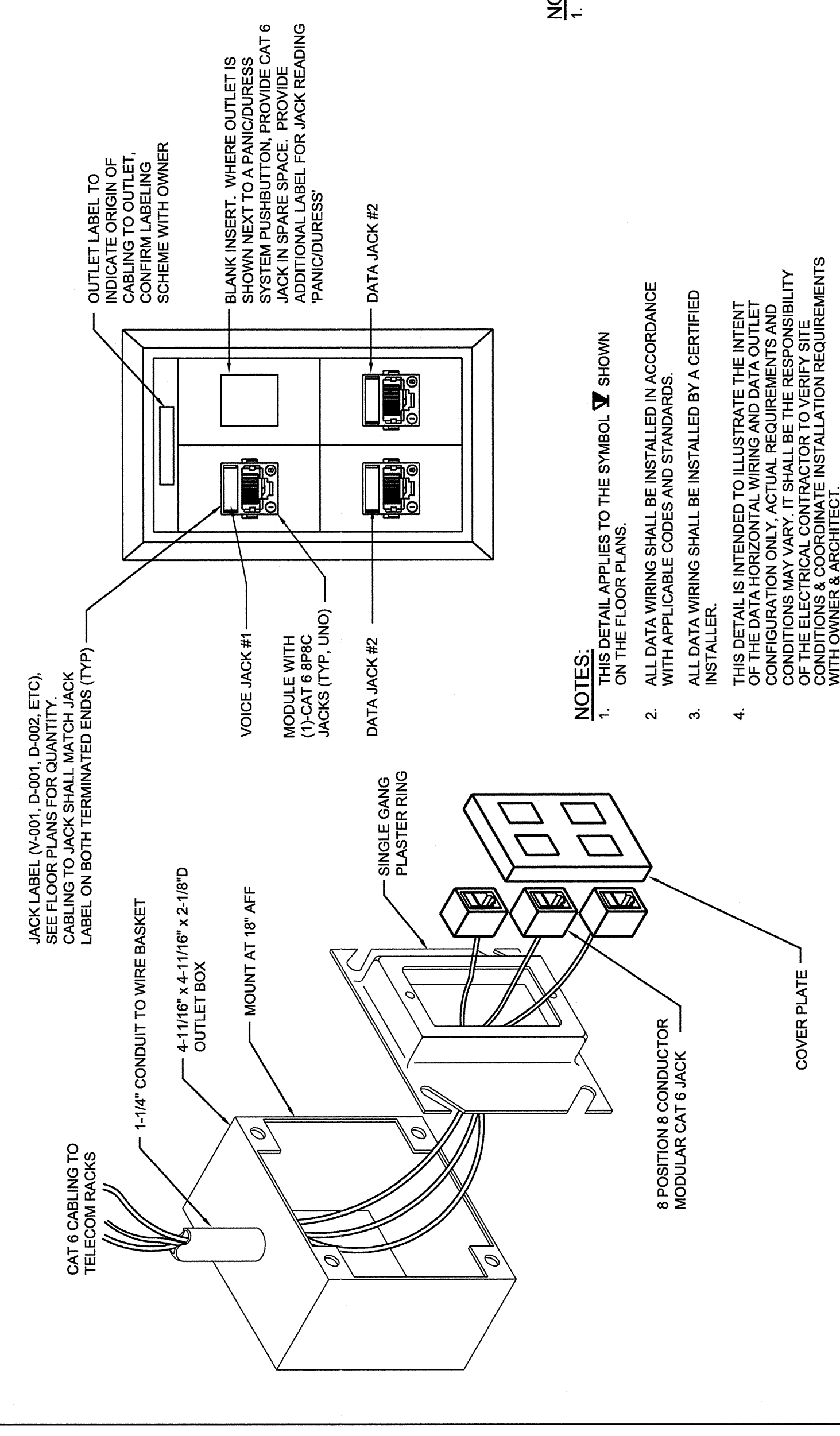
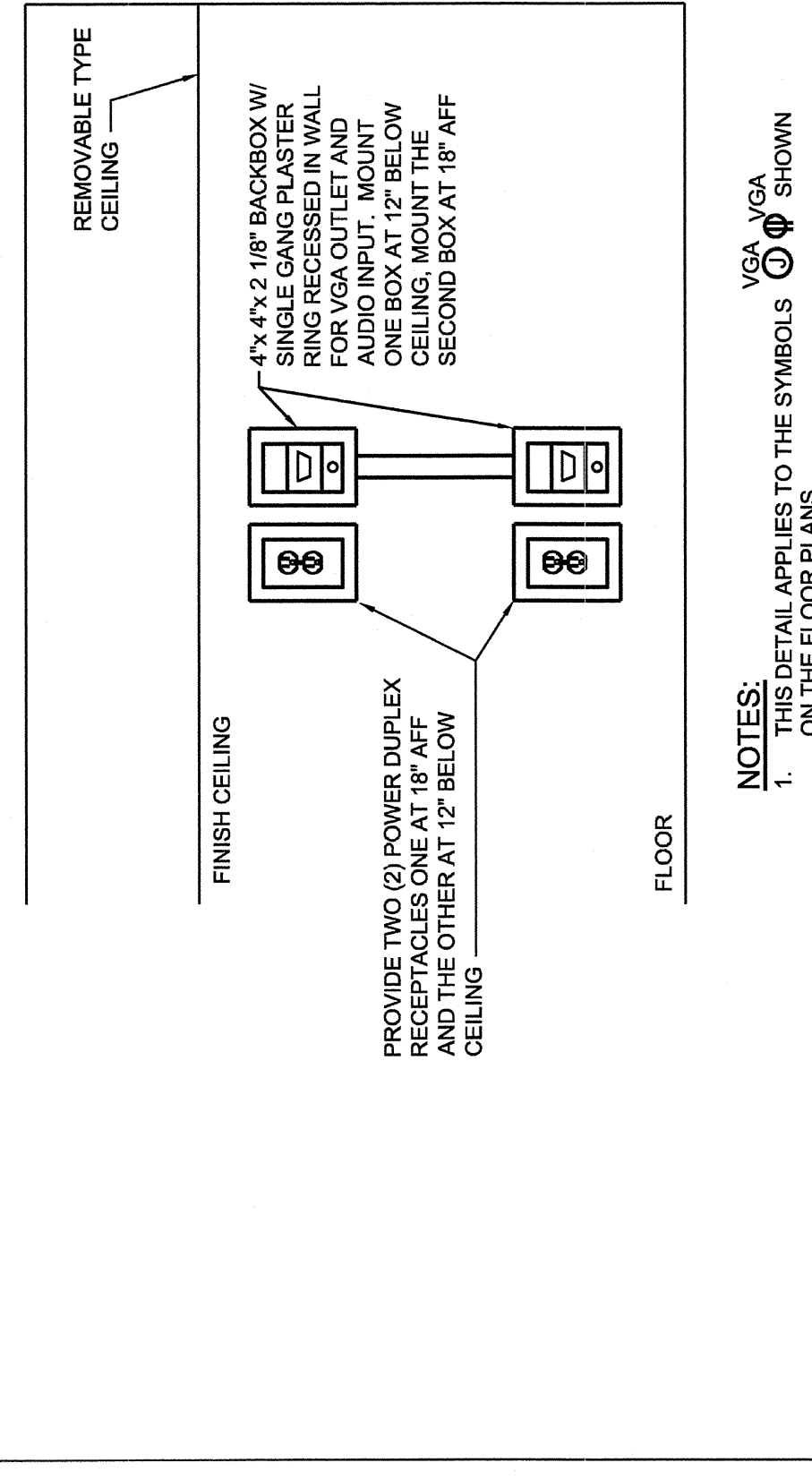


1 COMBINATION TELEPHONE/DATA OUTLET DETAIL

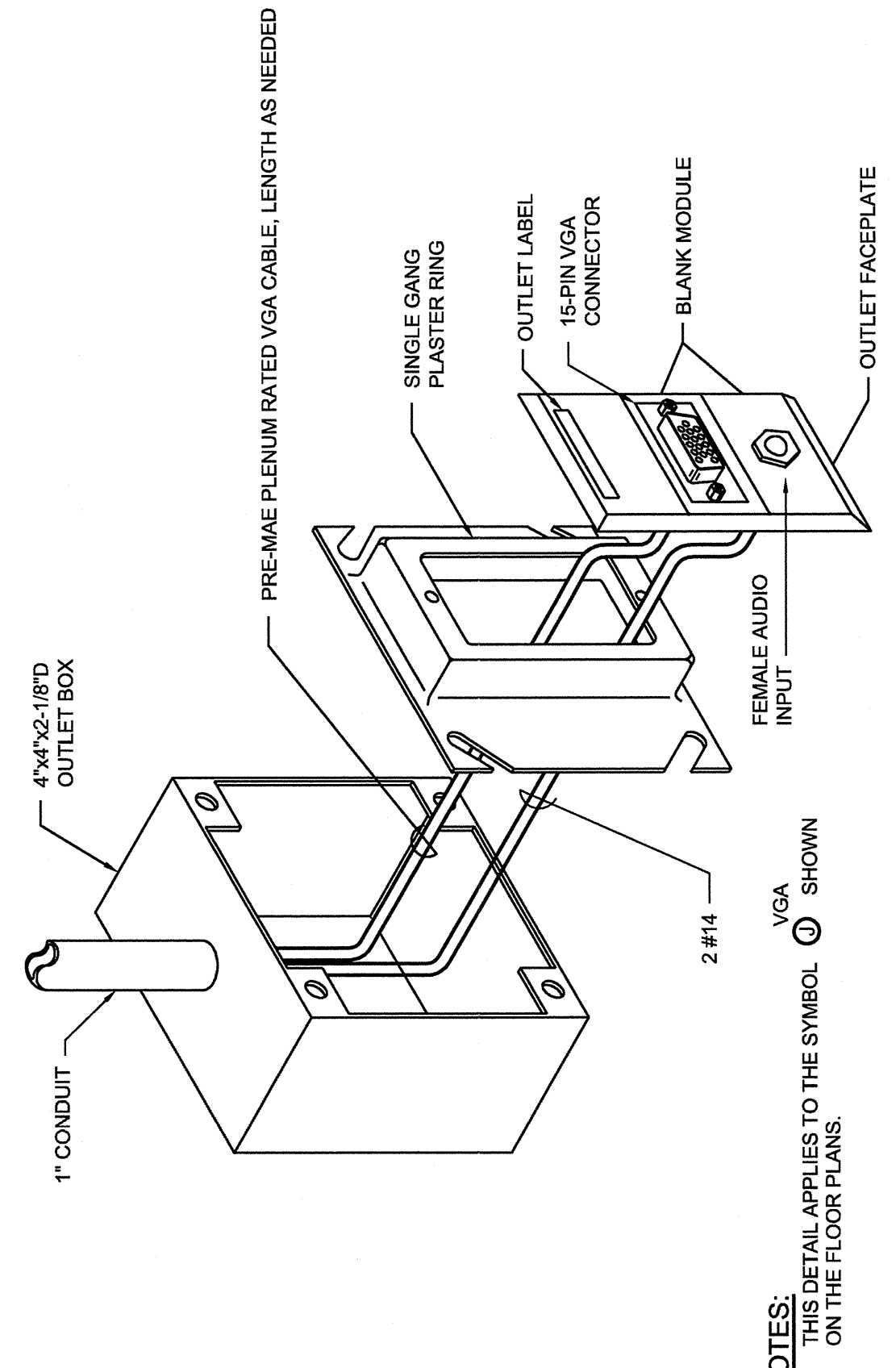


2 SINGLE TELECOMMUNICATIONS OUTLET DETAIL

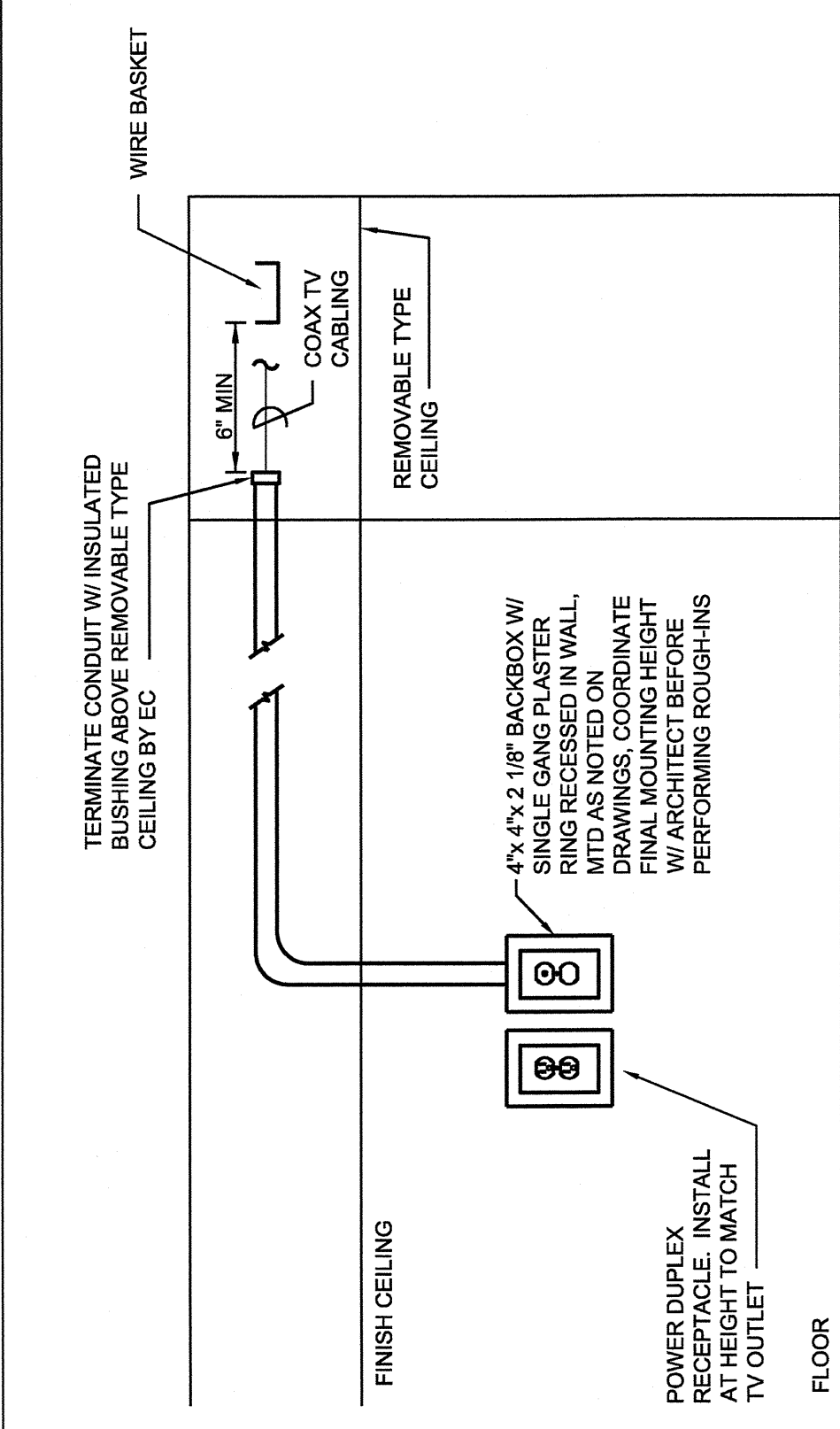


3 VGA WALL OUTLET ELEVATION

4 FLUSH MOUNTED TELEVISION OUTLET DETAIL

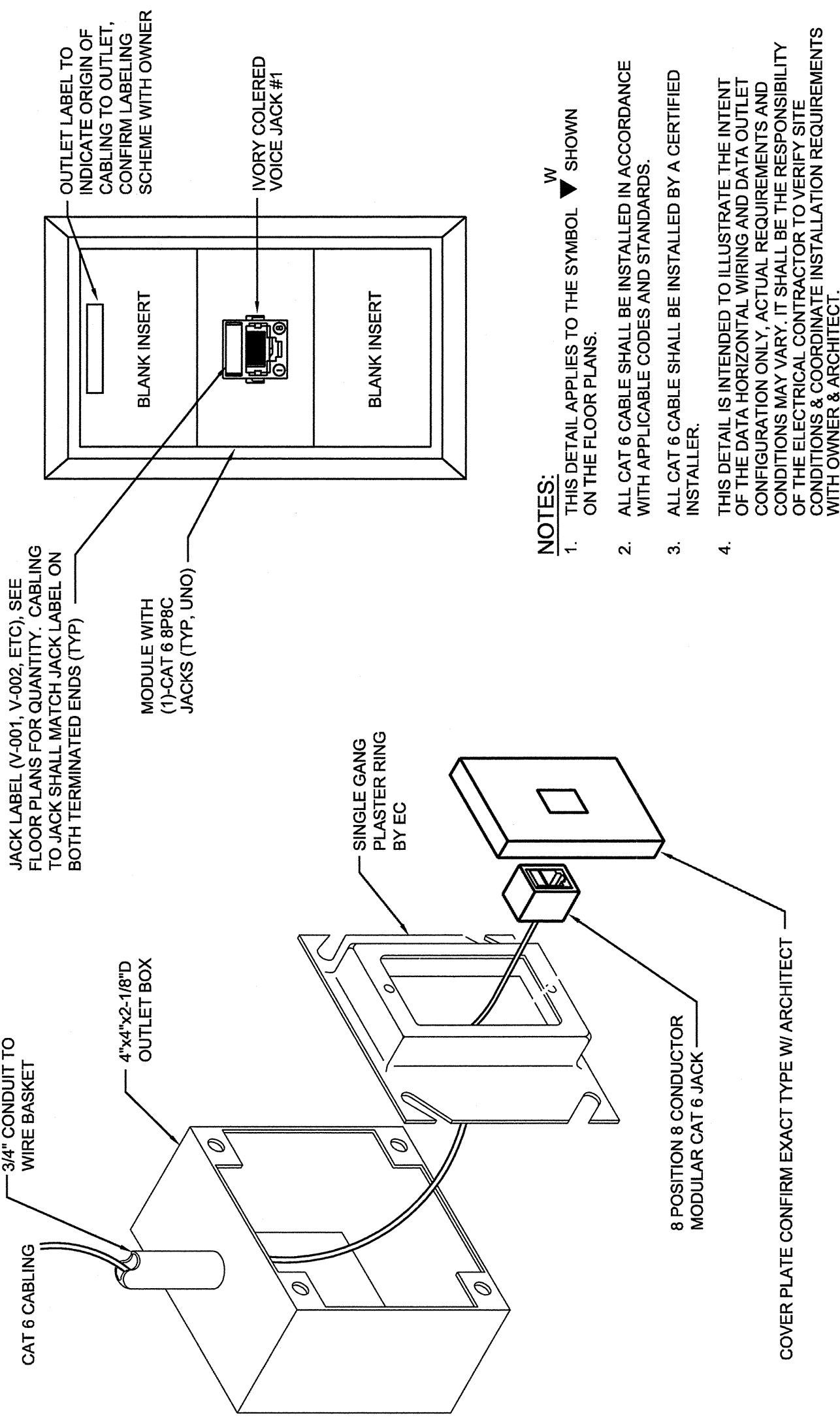


5 FLUSH MOUNTED VGA OUTLET DETAIL

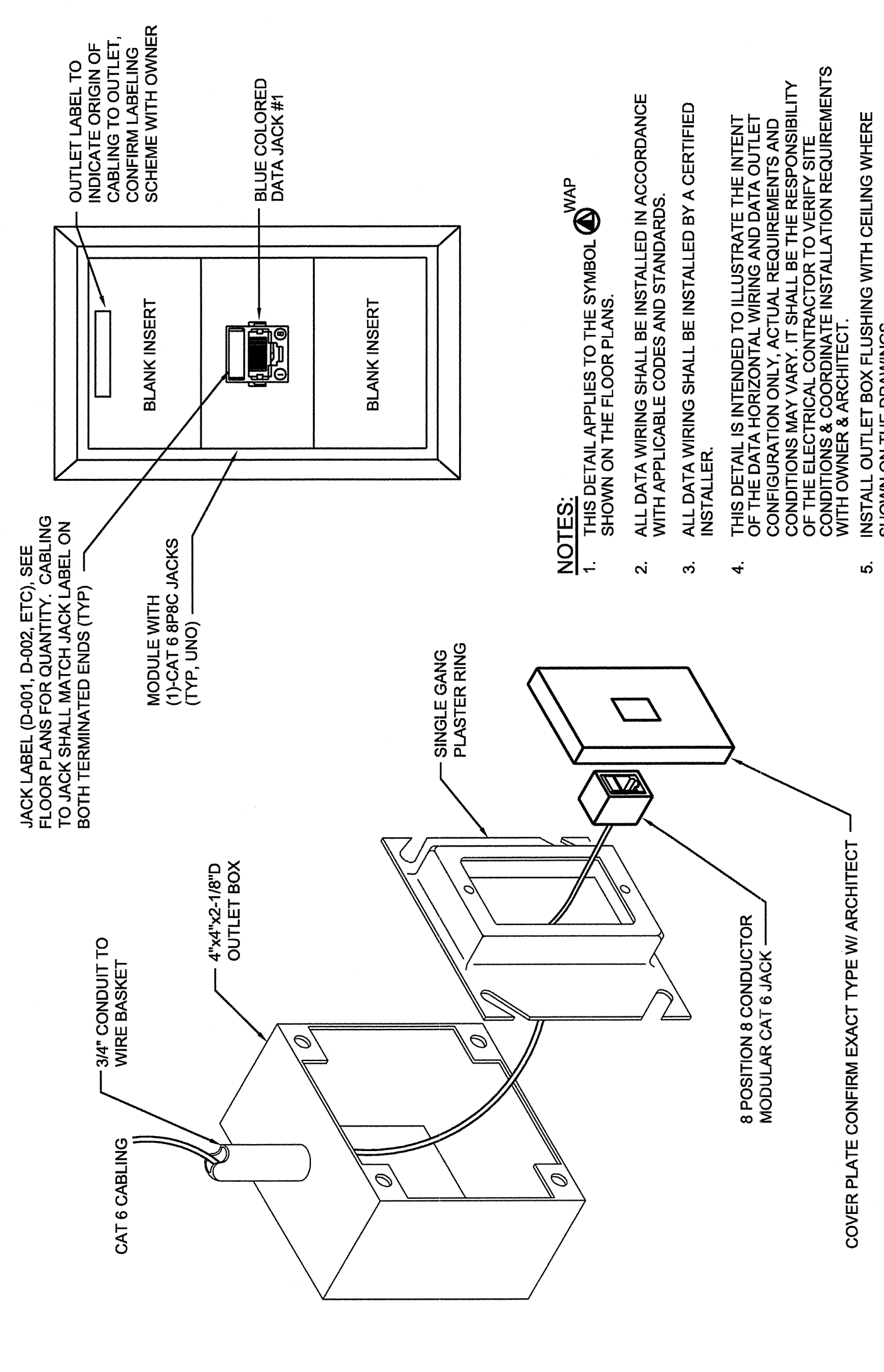


6 TELEVISION WALL OUTLET ELEVATION

7 WALL TELEPHONE ELEVATION DETAIL



8 SINGLE TELECOMMUNICATIONS OUTLET DETAIL #1



9 SINGLE TELECOMMUNICATIONS OUTLET DETAIL #2

CONSULTANTS:

ARCHITECT/ENGINEERS:

100% CONSTRUCTION DOCUMENT SUBMISSION

Office of Construction and Facilities Management

Department of Veterans Affairs

Project Title: VA Clarksburg Inpatient Mental Health Unit

Project Number: 540-11-106

VA Project Number: 11-1061

Building Number: ES503

Dwg. of: 1

Project North True North

ARCHITECT/ENGINEERS:

architecture planning interior design

IKM Incorporated

1407 Scipio Avenue, Johnston, PA 15904

Phone: 814-289-8300 FAX: 814-289-8001

cad@ikm.com www.ikm.com

www.ikm.com

CONSULTANTS:

H.F. LENZ COMPANY

1407 Scipio Avenue, Johnston, PA 15904

Phone: 814-289-8300 FAX: 814-289-8001

cad@hflenz.com www.hflenz.com

www.hflenz.com

Engineers • Planners • Surveyors • Energy Consultants

Revisions:

Date: