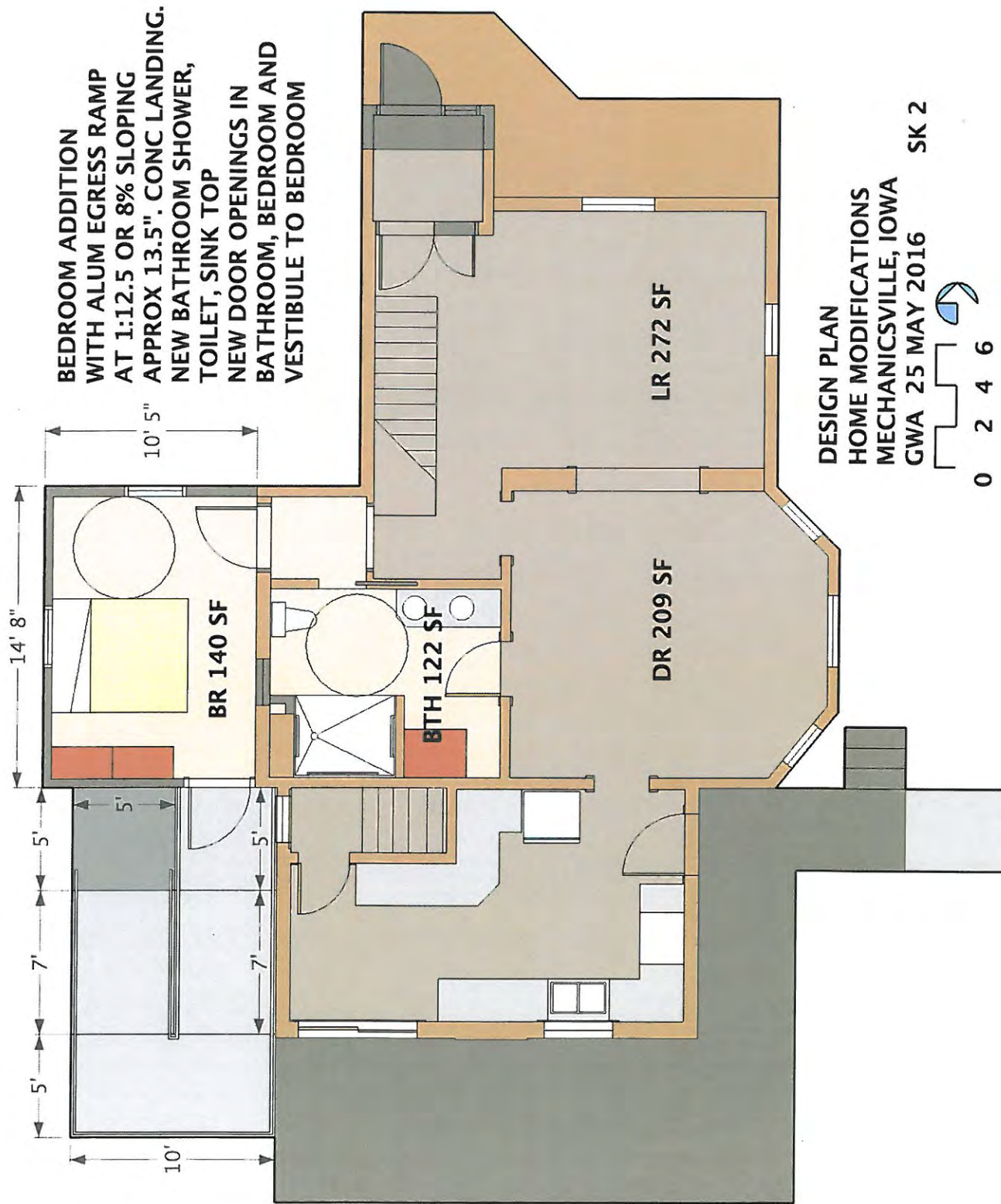


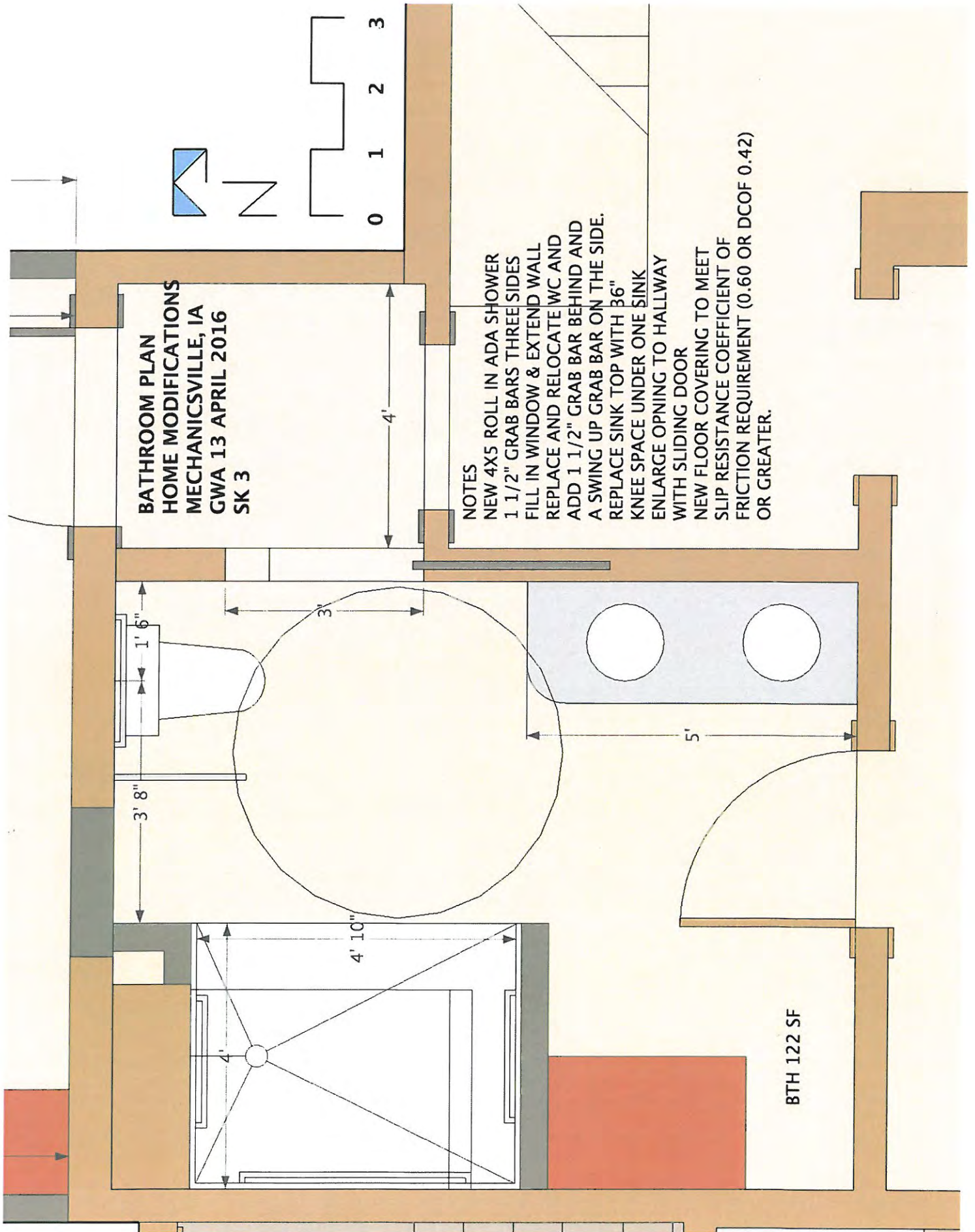
EXISTING PLAN FOR REFERENCE  
HOME MODIFICATIONS  
MECHANICSVILLE, IOWA  
GWA 13 APRIL 2016 SK 1





DESIGN PLAN  
 HOME MODIFICATIONS  
 MECHANICSVILLE, IOWA  
 GWA 25 MAY 2016  
 SK 2





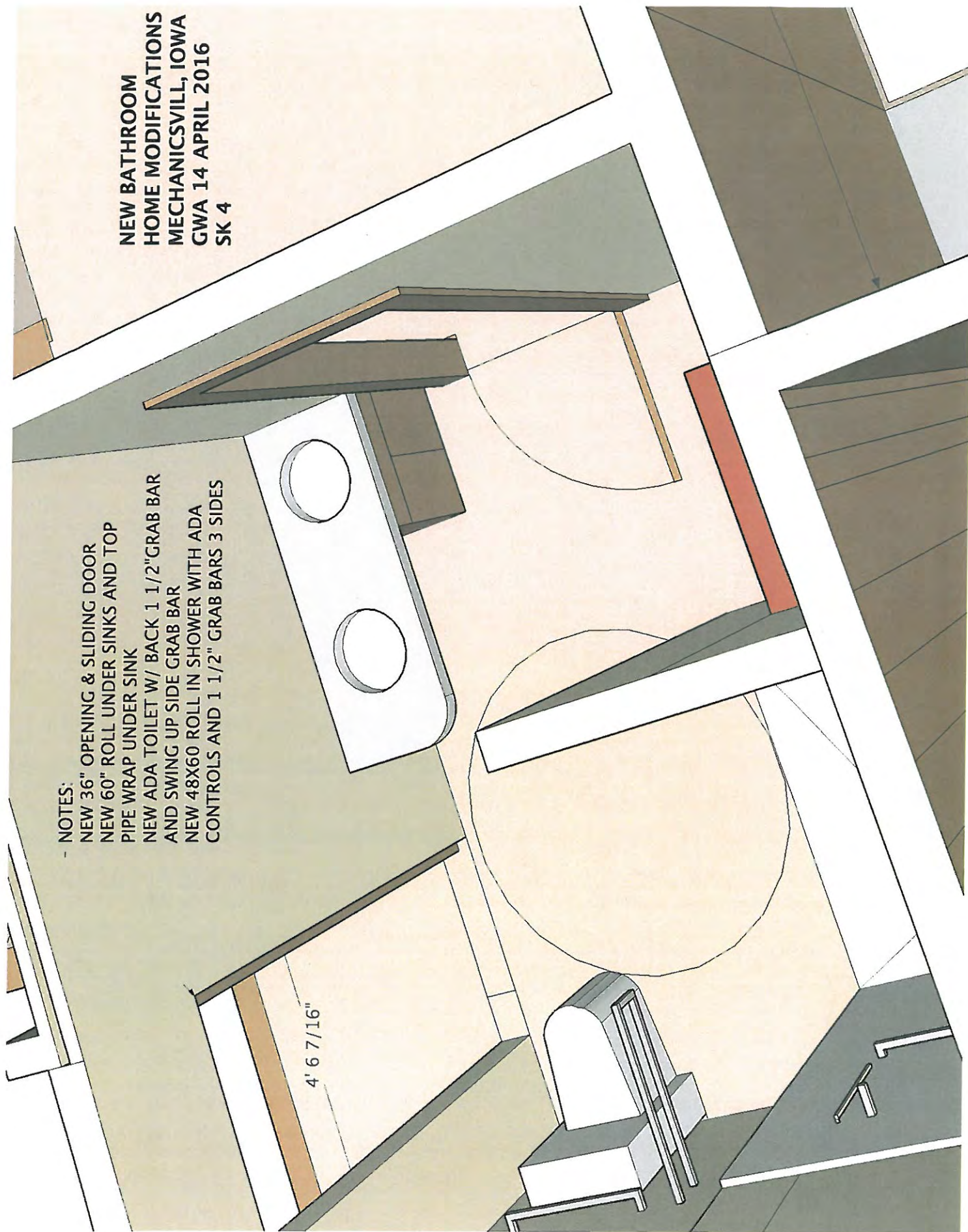


NOTES:

- NEW 36" OPENING & SLIDING DOOR
- NEW 60" ROLL UNDER SINKS AND TOP PIPE WRAP UNDER SINK
- NEW ADA TOILET W/ BACK 1 1/2" GRAB BAR AND SWING UP SIDE GRAB BAR
- NEW 48X60 ROLL IN SHOWER WITH ADA CONTROLS AND 1 1/2" GRAB BARS 3 SIDES

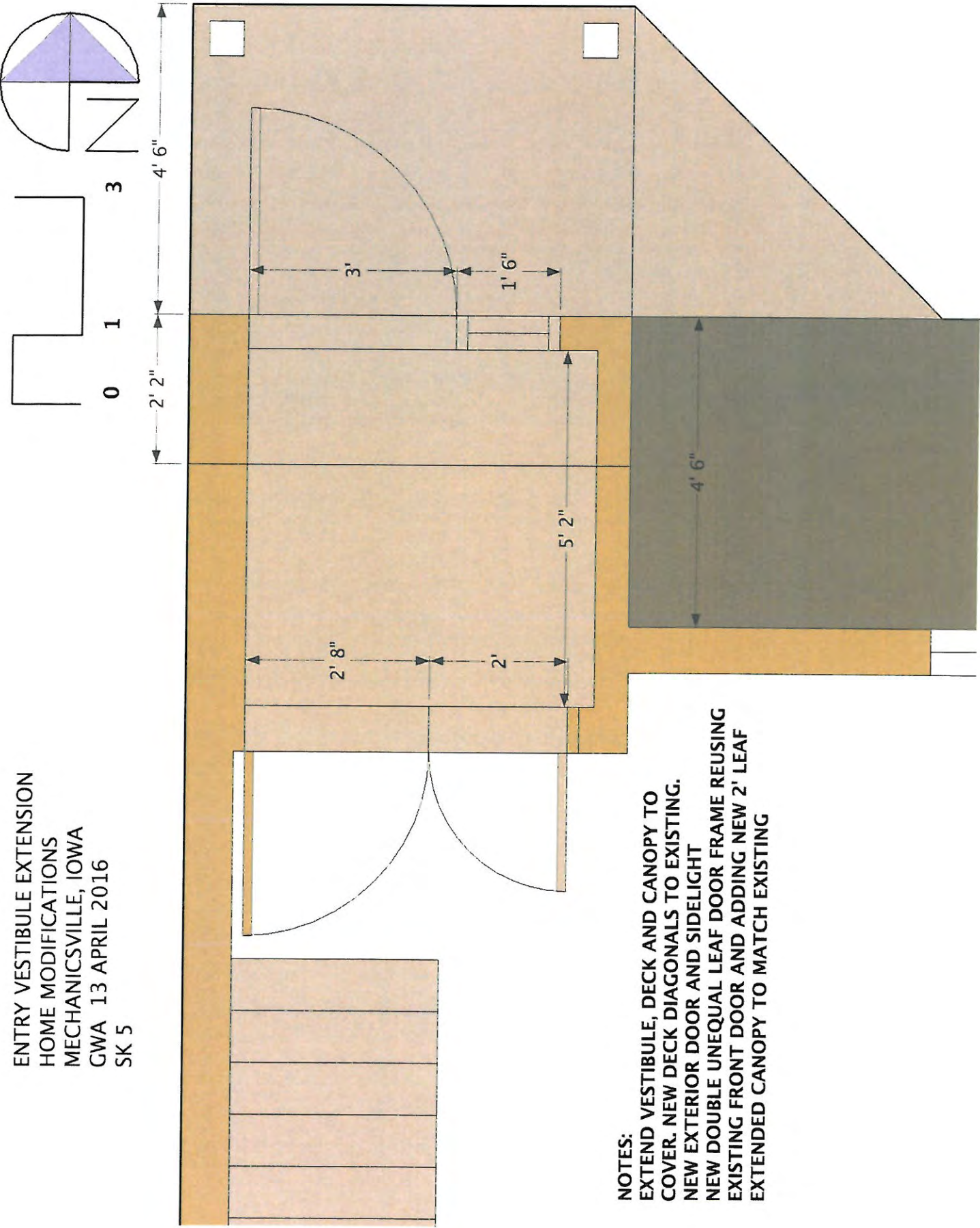
4' 6 7/16"

NEW BATHROOM  
HOME MODIFICATIONS  
MECHANICSVILL, IOWA  
GWA 14 APRIL 2016  
SK 4





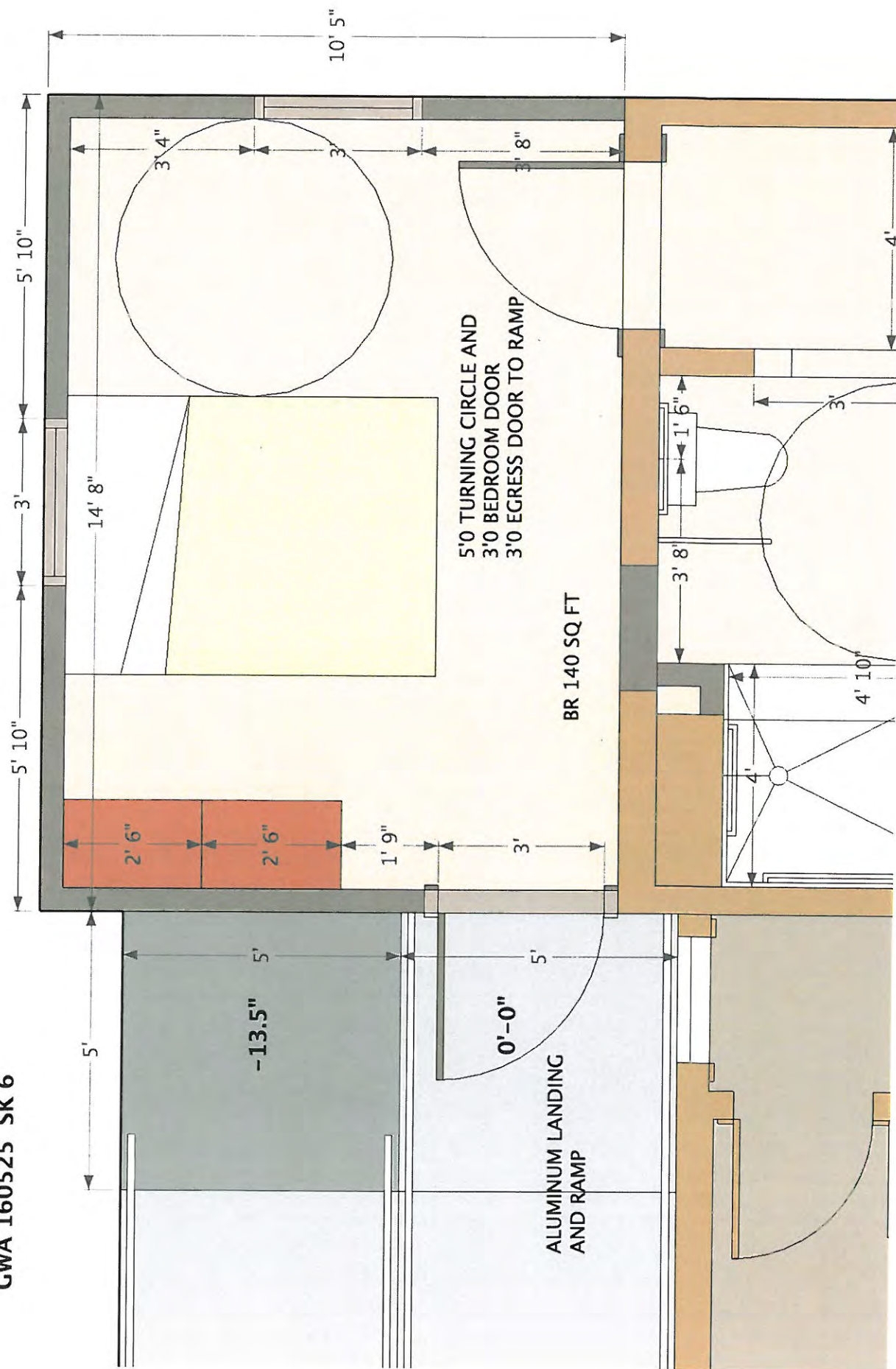
ENTRY VESTIBULE EXTENSION  
HOME MODIFICATIONS  
MECHANICSVILLE, IOWA  
GWA 13 APRIL 2016  
SK 5



NOTES:  
EXTEND VESTIBULE, DECK AND CANOPY TO  
COVER. NEW DECK DIAGONALS TO EXISTING.  
NEW EXTERIOR DOOR AND SIDELIGHT  
NEW DOUBLE UNEQUAL LEAF DOOR FRAME REUSING  
EXISTING FRONT DOOR AND ADDING NEW 2' LEAF  
EXTENDED CANOPY TO MATCH EXISTING

The diagram shows a 2D lattice structure. On the left, a square is divided into four quadrants by a diagonal line from the top-left to the bottom-right. The top-left and bottom-right quadrants are shaded blue. To the right of this square is a zigzag line that starts at a point, goes up and right, then down and right, then up and right, and finally down and right, ending at a point.

**GWA 160525 SK 6**





HOME MODIFICATIONS  
MECHANICSVILLE, IA  
BEDROOM & RAMP SKETCH  
GWA 25 MAY 2016 SK 7

BEDROOM  
ADDITION

5' WIDE RAMP  
5' LANDINGS  
7' LONG DUAL RAMPS  
1:12.5 (8%) SLOPE

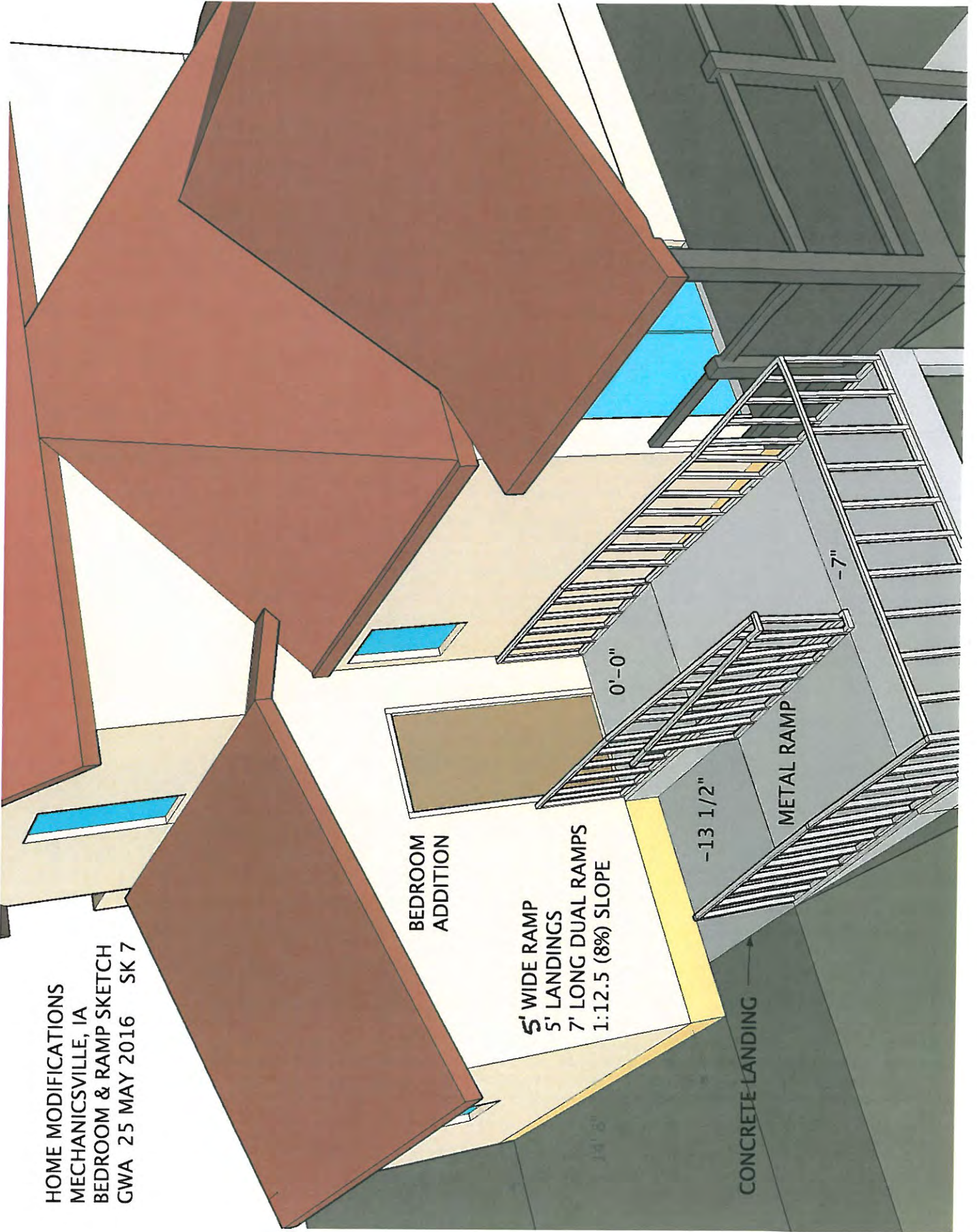
CONCRETE LANDING

METAL RAMP

-13 1/2"

0'-0"

-7"



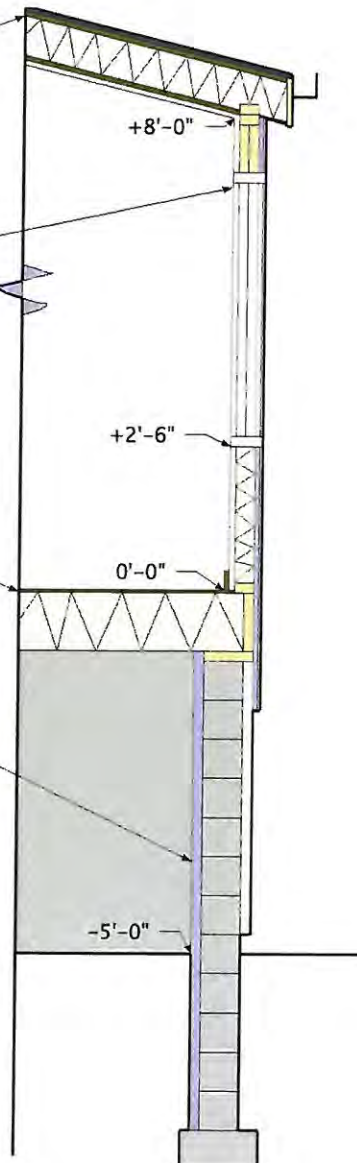
NOTES:  
MATCHING SHINGLES ON ROOF JOISTS  
AND R40 INSULATION WITH GYP BD  
SLOPING CEILING

36X54 WINDOW IN STUD WALLS  
WITH FULL INSULATION AND RIGID  
SHEETING UNDER MATCHING SIDING

PLYWOOD SUBFLOORING AND  
R40 INSULATED FLOOR JOISTS  
WITH 6 MIL POLY VB UNDER

8 BLK FND WALL ON CONC FTG  
WITH MEMBRANE AND SYNTHETIC  
STONE OUTSIDE AND R24 RIGID INSIDE

**BEDROOM WALL SECTION  
HOME MODIFICATIONS  
MECHANICSVILLE, IOWA  
GWA 13 APRIL 2016  
SK 8**





### 1½" O.D. heavy duty stainless steel grab bar with concealed mounting:

### Product Materials

**FLANGES:** 3¼" dia. 13 gauge stainless steel.

**ESCUTCHEONS:** 22 gauge stainless steel. One-piece drawn construction with exposed surfaces in architectural satin finish. Snap over flanges to conceal mounting screws.

**TUBING:** 1½" O.D. 18 gauge stainless steel, seamless construction with exposed surfaces in architectural satin finish. Bent ends of tubing pass thru the flanges and are welded for maximum strength. Intermediate supports are contour cut and joined by welding to form an integral part of the grab bar. All exposed welds ground and polished to blend. Mandrel bending process maintains uniform bar diameter. Return provides 1½" standard safety clearance between wall and bar.

### Strength

When properly mounted, all Bradley heavy duty grab bar systems meet or exceed the requirements of ANSI Standard A117.1, the ADA and ABA Accessibility Guidelines for Buildings and Facilities (ADAAG), and the Uniform Federal Accessibility Standard (UFAS). Select dimensions of configurations (-001, -054, -055, -059, and -060) are IAPMO certified to support up to 1000 pounds. (Please see Bradley's web site for more information on all grab bar configurations.)

### Installation

Verify all rough-in dimensions prior to installation. Secure to wall where adequate in-wall backing exists. Use bar as template to locate mounting holes. Drill holes and set anchors as appropriate. Mount grab bar and secure mounting screws (not included). Snap escutcheons into place. For information on Bradley grab bar mounting kits, please visit [bradleycorp.com](http://bradleycorp.com).

### Optional Features

Features	Suffix
<input checked="" type="checkbox"/> Safety-grip finish	-2
<input type="checkbox"/> High-polish finish	-4
<input type="checkbox"/> Safety grip with high-polished finish	-7
<input type="checkbox"/> Antimicrobial finish: 18", 24", 36" & 42" only	-AM

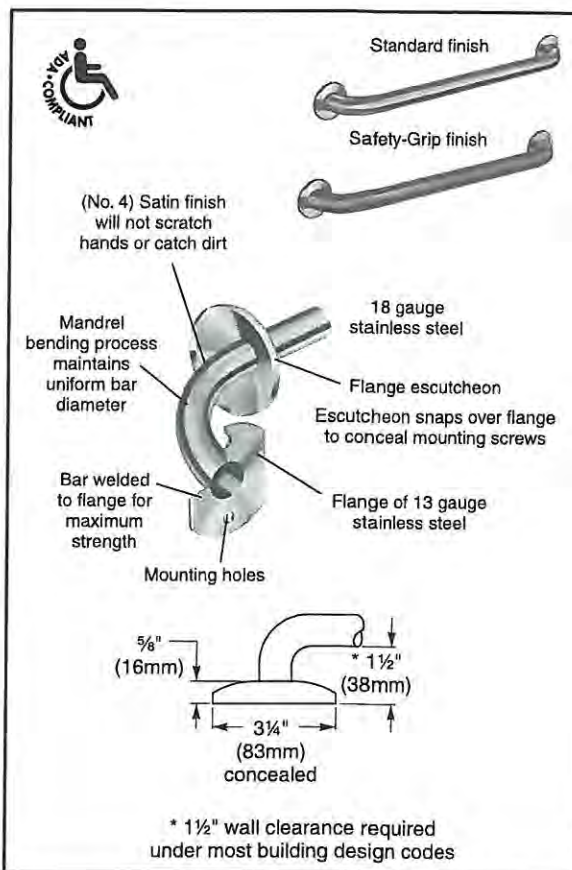
### Guide Specification

Grab bar shall be fabricated of satin finish stainless steel with concealed mounting flanges in sizes and configurations as indicated. Install with Bradley Mounting Kits as indicated.

### ADA Compliant

- ☒ Consult local and national accessibility codes for proper installation guidelines.
- ☒ Conformity and compliance to local and national codes is the responsibility of the installer.

Orders composed of products indicated as **Bradex®** will be available to ship in three days after receipt of order at the factory. There is no pricing penalty for this service from Bradley.



### Bradex® Models

Configuration Number	Shipping Data		Configuration Number	Shipping Data	
	Cu. Ft.	Wt. Lbs.		Cu. Ft.	Wt. Lbs.
001-18"	0.14	2	001-42"	0.15	4
001-24"	0.14	3	001-42"-10"	3.14	37.67
001-30"	0.15	3	001-48"	0.25	4
001-36"	0.15	3	059**	2.85	7
001-36-10"	2.40	30.46			

NOTE: These units must ship via common carrier.  
 \*\* 059: 40" x 52" Standard Dimensions.  
 • Indicates available Safety Grip. **Bradex®**

## Stainless Steel Flip-up Grab Bar with "All Stainless Steel Friction Hinge"

Configuration: 97

**Flip-up**  
Stainless Bracket

### Application Use:

Architectural

Commercial

Institutional

Residential

### Specifications

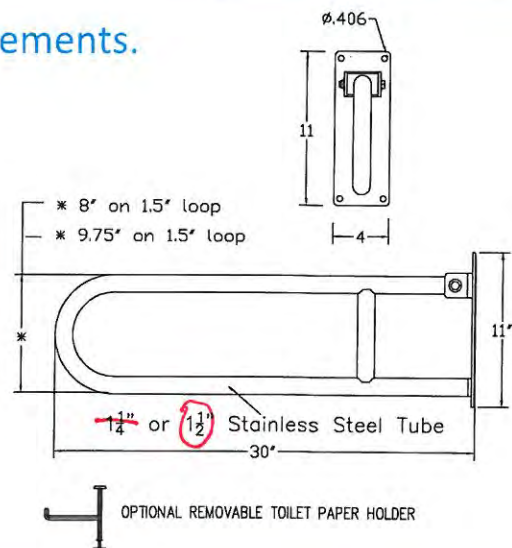
Manufactured by ELCOMA from 1.25" & 1.5" 18 gauge, type 304 stainless steel, with an all stainless steel mounting hinge bracket.  
The smooth motion Friction hinge can be easily raised and lowered from a wheelchair with little effort. The friction holds the bar just past 90 deg when in the up position allowing it to be safely out of the way when not in use.  
ELCOMA Flip-up grab bars are designed, built, and tested to withstand 250lbs. (113kgs) of vertical load when properly installed.\* This exceeds HUD, FHA, VA, ADA, ANSI and other federal, provincial, and local codes. \*Grab Bars can only be as strong as what they are mounted to. It is imperative when installing any safety product to consult with a qualified contractor to insure you have sufficient backing.



### Custom sizes are available to suit special requirements.

Elcoma manufactures a standard 30" loop with custom lengths available upon request. Flip-up safety rails are designed to be used for vertical load in the down position only.

Bar Diameter:	1.25" & 1.5"
Bar Grip:	Smooth, Peened, Knurled, Shur-Grip (Shur-Grip in 1.25" only)
Wall Bracket:	Satin Finish Stainless Steel & Smooth White
Standard Finishes:	Satin Finish, White or Almond Powder Coating
Custom Finishes:	Multiple colors & finishes available, call your representative or visit <a href="http://www.elcoma.com">www.elcoma.com</a> for selection grid.
Toilet paper options:	Removable
Carrier Options:	In Room Carrier & In Wall Column







Bathroom

Kitchen

Parts & Support

Search



## Moen brushed nickel eco-performance handshower handheld shower



Be the first to [write a review](#)



Brushed Nickel [3887EPBN]

Where to Buy

\$464.30  
MSRP

[Find Replacement Parts](#)

[Download Specs](#)



Feedback

**How are we doing?**

Please take a moment to let us know how we can best improve your experience.

[Start now >](#)

[Enlarge](#)

[Coordinating Items](#)

[Features](#)

[Installation & Support](#)

[Customer Reviews](#)



## Align brushed nickel posi-temp® shower only



Be the first to [write a review](#)



Brushed Nickel [T2192EPBN]

\$258.85

Valve Information:

[\[What's this?\]](#)

2570: Posi-Temp® 1/2" CC connection incl... ⇅ \$133.65

Where to Buy

\$392.50  
MSRP

[Find Replacement Parts](#)

[Download Specs](#)



Feedback

How are we doing?

Please take a moment to let us know how we can best improve your experience.

[Start now >](#)

[Enlarge](#)



Check out these related products

- |                       |                                  |                                   |                                |           |
|-----------------------|----------------------------------|-----------------------------------|--------------------------------|-----------|
| 3LX69 Dust Plug, 4 In | PARKER 68C-6-4<br>Connector,.... | PARKER 4-4 ME-SS<br>Elbow, 90,... | Kingston Brass<br>CC4410.KL... | PA<br>Bra |
|-----------------------|----------------------------------|-----------------------------------|--------------------------------|-----------|



Search



## SAVE OVER \$200 WITH A COMPLETE SHOWER PACKAGE.

### MODEL: APF6048BF5P

[Share this page](#)

Save more than \$200 with a complete shower package, which includes all the recommended accessories.

This 5-piece Freedom Accessible Shower is the same width as a standard 5' bathtub and is perfect for remodelling.

The shower features a center drain location and a low 7/8" bevelled threshold, with a reinforced and pre-levelled shower base.

The shower features durable, luxurious and easy to clean gelcoat fibreglass with an 8" tile pattern.

Full plywood backing in walls offers strength and easy installation of accessories.

For peace of mind this shower offers a 30 year warranty on manufacturing defects.

#### Standard Features:

- 60" x 49" x 78"
- 5-piece for remodelling
- 7/8" barrier free bevelled threshold
- Self-supporting and pre-levelled shower base eliminates mud setting
- Full fiberglass encapsulated wood backing on walls
- 8" Tile pattern easy to clean gelcoat finish
- Large molded soap ledge
- Textured slip-resistant floor - *COF 0.60*
- 30 Year Manufacturer's Limited Warranty

#### Code Compliance

- IPC International Plumbing Code
- UPC Uniform Plumbing Code
- ANSI Z124.2 Standards for Plastic Showers
- Complies With CSA Standards
- Certificate of Listing (IAPMO)

#### SHOWER PACKAGE INCLUDES:

- Collapsible Water Retainer
- Folding Shower Seat
- Caulkless Drain
- Grab Bars Stainless Steel: 1 x 42", 2 x 24"
- Shower Rod and Heavy Duty Weighted Shower Curtain
- Pressure Balance Valve with Hand-held Shower and Slide Bar

#### View Videos

- [Multi-piece Shower Installation](#)

#### View Color Options

- [Standard Color Options](#)

#### Downloads

- [Submittal Data \(PDF\)](#)
- [Installations \(PDF\)](#)
- [CAD Files \(DWG\)](#)
- [Care & Cleaning \(PDF\)](#)

\* Certain CAD files are provided upon request



**Call For Pricing 1-877-947-7769**

#### SITE LINKS

[Home](#)  
[About Us](#)  
[Gallery](#)  
[Contact Us](#)  
[Warranty & Sales Terms](#)  
[Privacy Policy](#)  
[Join AP Network and Affiliates](#)

#### PAYMENT METHODS



#### RELATED SITES

[FREEDOM Lift Systems](#)  
[FREEDOM Bathtubs](#)  
[FREEDOM Blog](#)  
[AP Accessibility Professionals](#)

Select Language ▼

Powered by [Google Translate](#)



THE BOLD LOOK  
OF **KOHLER**

COMPARE PRODUCTS ▼



## Forté® single-hole bathroom sink faucet with sculpted lever handle

[Dimensions and Measurements](#)K-10215-4-CP  
\$218.70 [List Price](#)**COLOR:** Polished Chrome

With their stylish sculpted silhouettes, Forté faucets complement both classic and contemporary decor. This bathroom sink faucet has an arching spout and a single handle for easy water control. The spout features an aerator, which ensures smooth and splash-free water flow.

### FEATURES

- For single-hole installation or 4" centers with escutcheon
- KOHLER ceramic disc valves exceed industry longevity standards over two times for a lifetime of durable performance
- Solid brass construction for durability and reliability
- KOHLER finishes resist corrosion and tarnishing, exceeding industry durability standards over two

Free shipping on orders over \$49\*

ALLMODERN

Find anything for your home...

SEARCH

Idea Boards Inspiration Account Cart

FURNITURE BED + BATH LIGHTING DÉCOR RUGS OUTDOOR STORAGE HOME IMPROVEMENT KIDS DEALS

Up to 65% OFF Spring Style Refresh

Up to 65% OFF The Refund Sale

Up to 60% OFF 2016 Trend Report

Vanity Tops > Pegasus > SKU: PGS2736

Share:     

## 61" Double Basin Vanity Top by Pegasus

Write the First Review

\$555.85 ~~\$852.00~~ 35% Off




FREE SHIPPING

Ships in 5-6 weeks

Quantity: 1

ADD TO CART

 SAVE TO IDEA BOARD

Product Information:

- Special Order
- Overall: 61" H x 22" W x 0.75" D
- Overall Product Weight: 123.72lbs

Interested in this item?

Save it to a board to come back to it later.



Persuade® Curv Comfort Height® skirted two-piece elongated dual-flush toilet with top-mount actuator

K-3723



Ice Grey (-95)



### Current Selection



Color/Finish: Ice Grey (-95)

Model Number: K-3723-95

List Price\*: \$609.35

### Resources

#### Dimensions and Measurements

([http://www.us.kohler.com/onlinecatalog/pdf/K-3723\\_spec.pdf](http://www.us.kohler.com/onlinecatalog/pdf/K-3723_spec.pdf))

#### One-Year Limited Warranty

#### Where to Buy

#### Service Parts Information

([http://www.kohlerserviceparts.kohler.com/modelpage.aspx?](http://www.kohlerserviceparts.kohler.com/modelpage.aspx?model=3723&returnurl=http%3a%2f%2fwww.kohler.com%2fbold-independence%2fproducts%2fdetail%3f%26productNumber%3d3723%26category)

[model=3723&returnurl=http%3a%2f%2fwww.kohler.com%2fbold-independence%2fproducts%2fdetail%3f%26productNumber%3d3723%26category](http://www.kohlerserviceparts.kohler.com/modelpage.aspx?model=3723&returnurl=http%3a%2f%2fwww.kohler.com%2fbold-independence%2fproducts%2fdetail%3f%26productNumber%3d3723%26category))