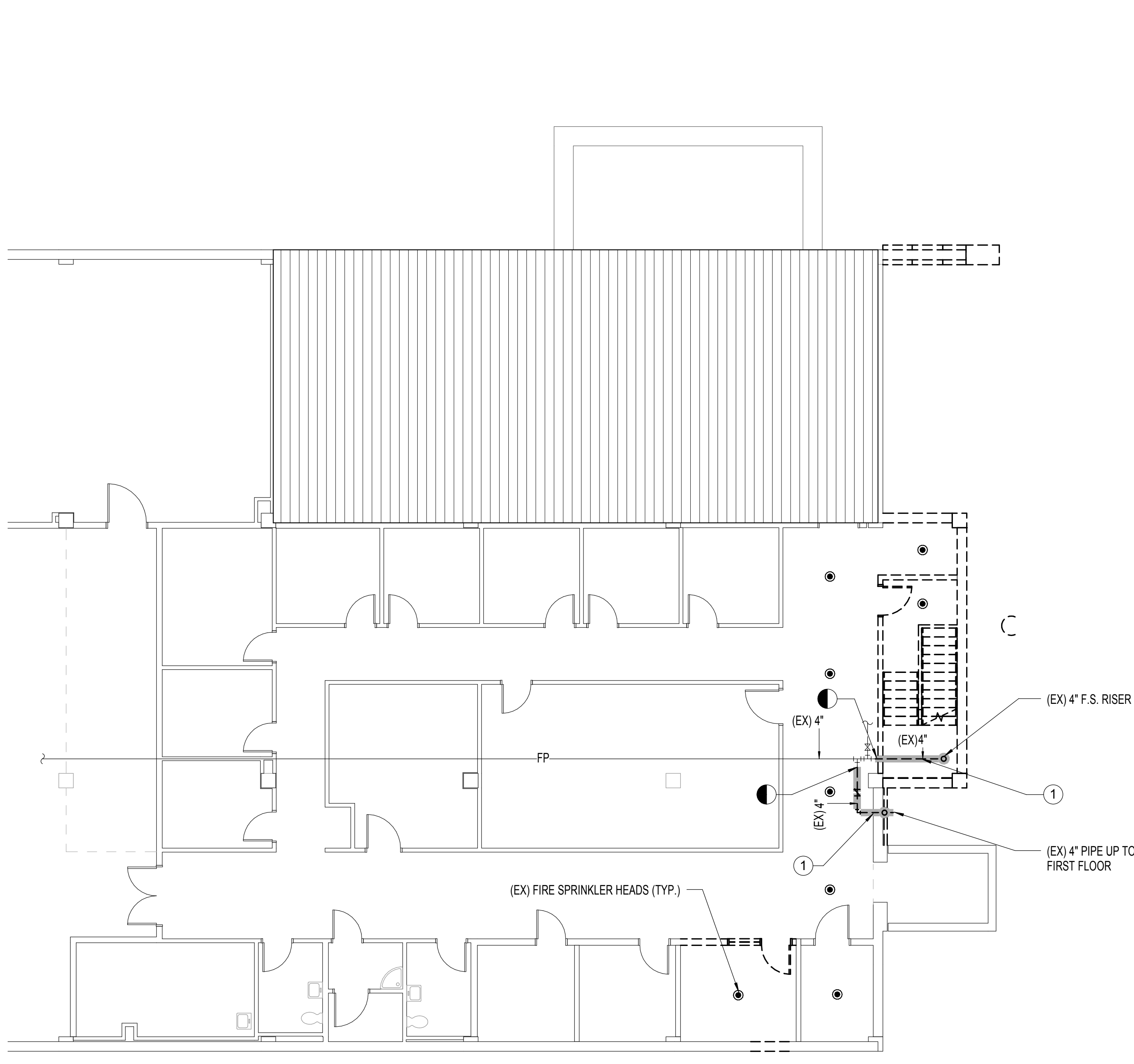


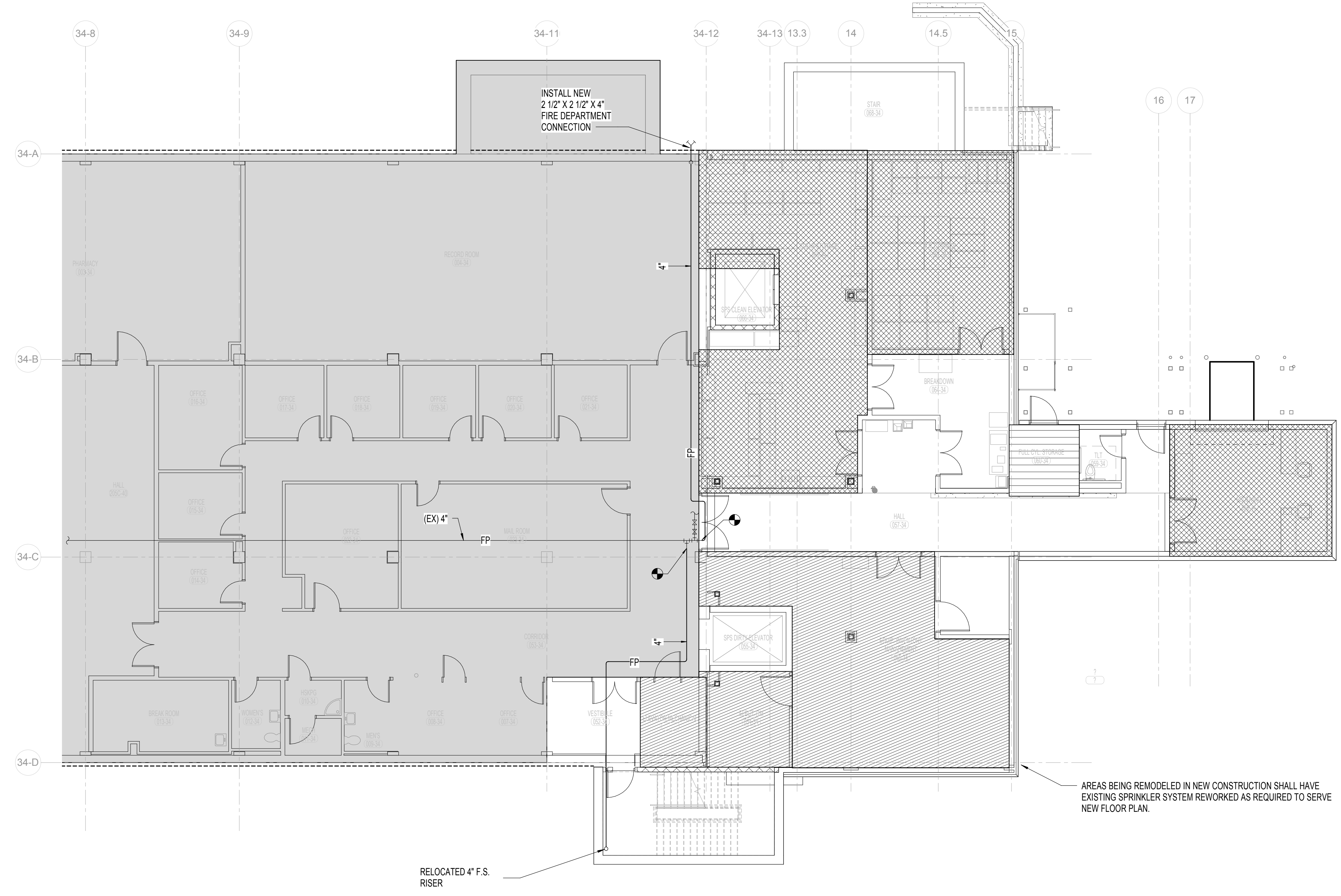
10/28/2016 4:21:08 PM
C:\Users\jga\Documents\15725-000-MASTER MECH-R16.dgn

three eighths inch = one foot
one eighth inch = one foot
one quarter inch = one foot
three quarters inch = one foot
one half inch = one foot
one inch = one foot
one and one half inches = one foot
two inches = one foot
three inches = one foot
four inches = one foot
five inches = one foot
six inches = one foot
seven inches = one foot
eight inches = one foot
nine inches = one foot
ten inches = one foot
eleven inches = one foot
twelve inches = one foot
thirteen inches = one foot
fourteen inches = one foot
fifteen inches = one foot
sixteen inches = one foot
seventeen inches = one foot
eighteen inches = one foot
nineteen inches = one foot
twenty inches = one foot
twenty one inches = one foot
twenty two inches = one foot
twenty three inches = one foot
twenty four inches = one foot
twenty five inches = one foot
twenty six inches = one foot
twenty seven inches = one foot
twenty eight inches = one foot
twenty nine inches = one foot
thirty inches = one foot
thirty one inches = one foot
thirty two inches = one foot
thirty three inches = one foot
thirty four inches = one foot
thirty five inches = one foot
thirty six inches = one foot
thirty seven inches = one foot
thirty eight inches = one foot
thirty nine inches = one foot
forty inches = one foot
forty one inches = one foot
forty two inches = one foot
forty three inches = one foot
forty four inches = one foot
forty five inches = one foot
forty six inches = one foot
forty seven inches = one foot
forty eight inches = one foot
forty nine inches = one foot
fifty inches = one foot
fifty one inches = one foot
fifty two inches = one foot
fifty three inches = one foot
fifty four inches = one foot
fifty five inches = one foot
fifty six inches = one foot
fifty seven inches = one foot
fifty eight inches = one foot
fifty nine inches = one foot
sixty inches = one foot
sixty one inches = one foot
sixty two inches = one foot
sixty three inches = one foot
sixty four inches = one foot
sixty five inches = one foot
sixty six inches = one foot
sixty seven inches = one foot
sixty eight inches = one foot
sixty nine inches = one foot
seventy inches = one foot
seventy one inches = one foot
seventy two inches = one foot
seventy three inches = one foot
seventy four inches = one foot
seventy five inches = one foot
seventy six inches = one foot
seventy seven inches = one foot
seventy eight inches = one foot
seventy nine inches = one foot
eighty inches = one foot
eighty one inches = one foot
eighty two inches = one foot
eighty three inches = one foot
eighty four inches = one foot
eighty five inches = one foot
eighty six inches = one foot
eighty seven inches = one foot
eighty eight inches = one foot
eighty nine inches = one foot
ninety inches = one foot
ninety one inches = one foot
ninety two inches = one foot
ninety three inches = one foot
ninety four inches = one foot
ninety five inches = one foot
ninety six inches = one foot
ninety seven inches = one foot
ninety eight inches = one foot
ninety nine inches = one foot
one hundred inches = one foot



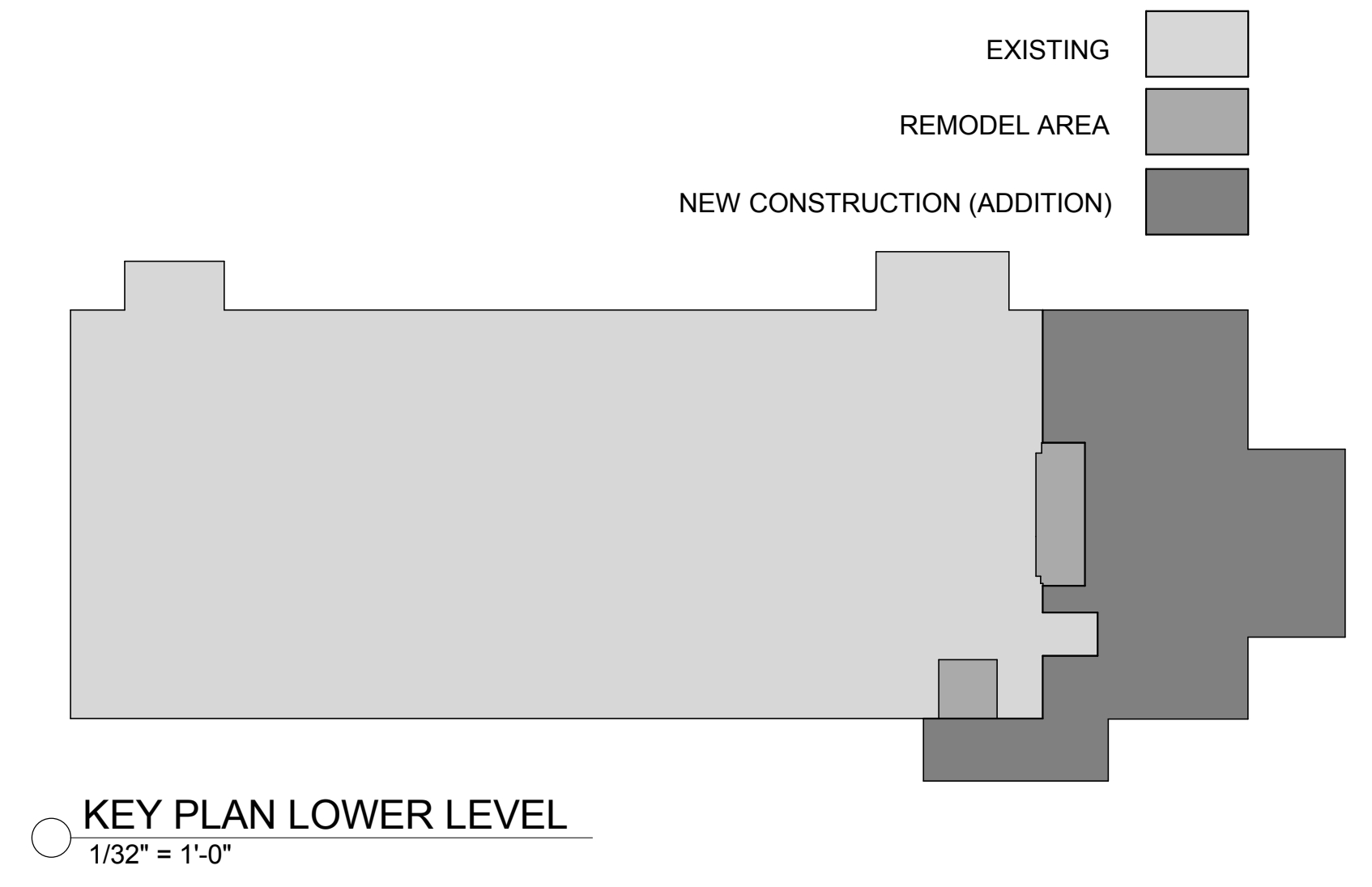
PLAN NOTES
1. EXISTING FIRE PROTECTION PIPING TO BE REMOVED.

1 FIRE PROTECTION DEMOLITION PLAN - LOWER LEVEL
1/8" = 1'-0"
0' 4' 8' 16'
1/8" = 1'-0"



2 FIRE PROTECTION PLAN - LOWER LEVEL
1/8" = 1'-0"
0' 4' 8' 16'
1/8" = 1'-0"

| HATCH KEY | |
|-----------------|--|
| [Hatch Pattern] | NOT IN SCOPE OF WORK |
| [Hatch Pattern] | LIGHT HAZARD |
| [Hatch Pattern] | ORDINARY HAZARD CLASS I |
| [Hatch Pattern] | ORDINARY HAZARD CLASS II |
| [Hatch Pattern] | EXTRA HAZARD |
| [Hatch Pattern] | AREA LOCKED DURING FIELD VISIT - UNABLE TO CONFIRM EXISTING CONDITIONS |

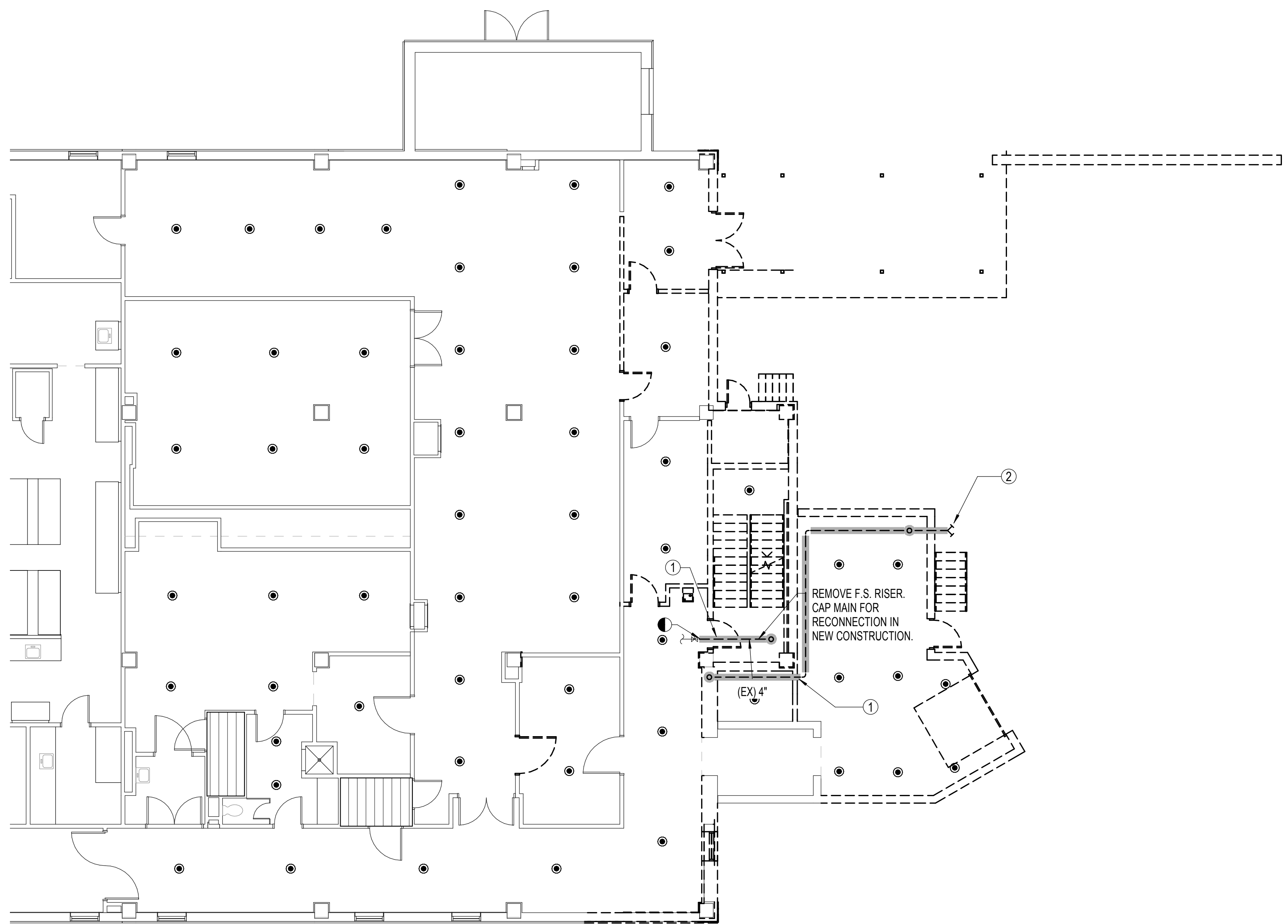


| | | | | | | | |
|------------|-------|--------------|--|---|--|------------------------------|--|
| Revisions: | Date: | CONSULTANTS: | ARCHITECT/ENGINEERS: | Drawing Title: | Project Title: | Project Number: | Office of Construction and Facilities Management |
| | | | HFG HEALTH FACILITIES GROUP architecture | FIRE PROTECTION PLAN - LOWER LEVEL | STERILE PROCESSING SERVICE (SPS) SURGICAL SUITE EXPANSION, B34 | 589-754 | Department of Veterans Affairs |
| | | | PEC PROFESSIONAL ENGINEERING CONSULTANTS, P.A. 303 SOUTH TOPEKA WICHITA, KS 67202 316-262-2691 www.pec1.com | BID SET | Contract No.: -- | | |
| | | | | | Location: Robert J. Dole VA Medical Center 5500 E Kellogg, Wichita, KS | Drawing Number: FX100 | |
| | | | | | Date: 10/31/2016 | Checked: BOH | |
| | | | | | | Drawn: RMH | |
| | | | | | | Dwg. of | |

10/28/2016 4:21:16 PM
C:\Users\jg\Documents\15725-000-MASTER MECH-R16.dgn

one eighth inch = one foot
one quarter inch = one foot
three eighths inch = one foot
one half inch = one foot
three quarters inch = one foot
one inch = one foot
one and one half inches = one foot
three inches = one foot

1 FIRE PROTECTION DEMOLITION PLAN - FIRST FLOOR - BID ITEM 6
1/8" = 1'-0"



- # **PLAN NOTES**
- EXISTING FIRE PROTECTION PIPING TO BE REMOVED.
 - EXISTING 2-1/2" X 2-1/2" X 4" FIRE DEPARTMENT CONNECTION TO BE REMOVED.

| Revisions: | Date |
|------------|------|
| | |
| | |
| | |
| | |
| | |
| | |
| | |
| | |
| | |
| | |

CONSULTANTS:

-



ARCHITECT/ENGINEERS:

HFG | HEALTH FACILITIES GROUP
architecture

PEC
PROFESSIONAL ENGINEERING CONSULTANTS, P.A.
303 SOUTH TOPEKA WICHITA, KS 67202
316-262-2691 www.pec1.com

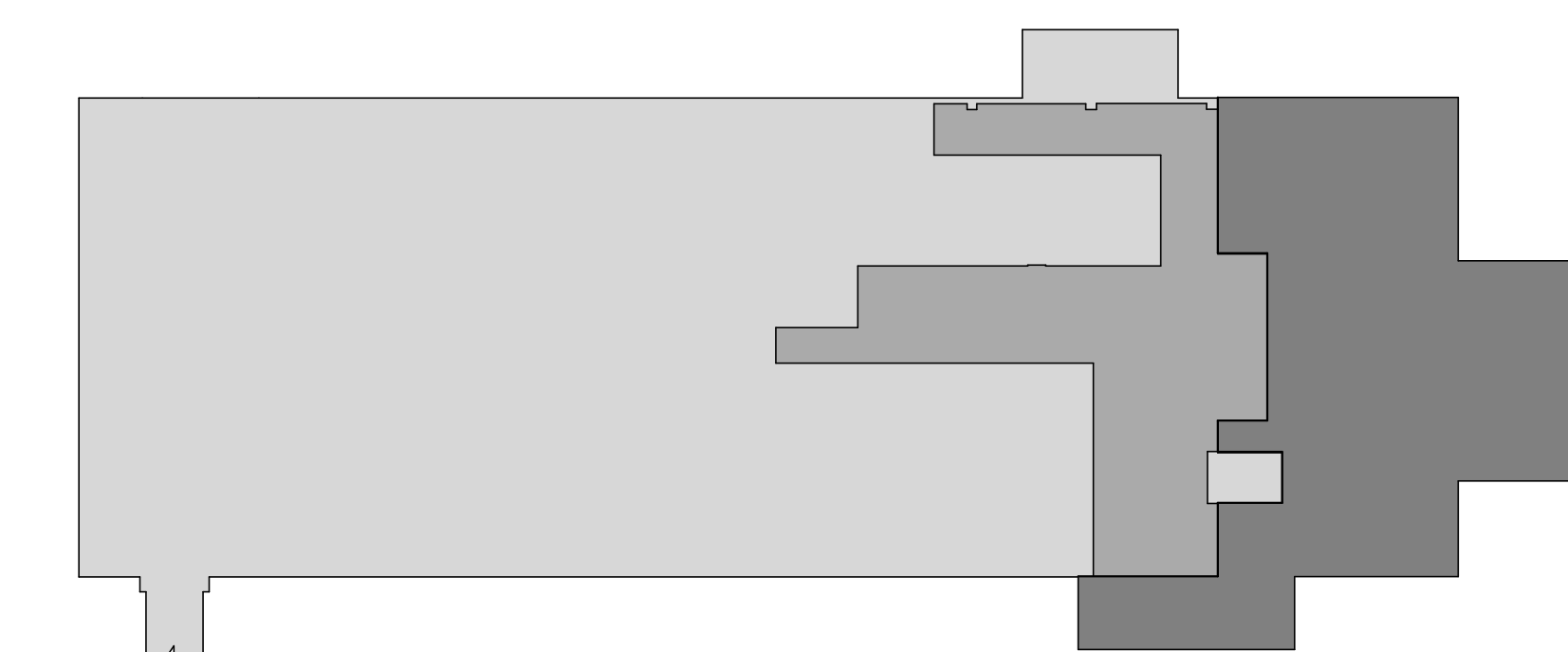
Drawing Title
FIRE PROTECTION PLAN - FIRST FLOOR - BID ITEM 6

BID SET

| | | | | |
|--|--|--|----------------------------------|---------------------|
| Project Title STERILE PROCESSING SERVICE (SPS) SURGICAL SUITE EXPANSION, B34 | | | Project Number 589-754 | |
| Contract No.: -- | | | Drawing Number FX101.6 | |
| Location Robert J. Dole VA Medical Center 5500 E Kellogg, Wichita, KS | | | Date 10/31/2016 | |
| Date 10/31/2016 | | | Checked BOH | Drawn RMH |
| Dwg. of | | | | |

Office of
Construction
and Facilities
Management

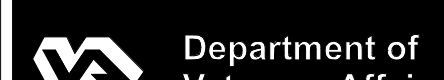
Department of
Veterans Affairs



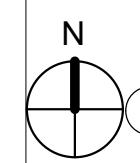
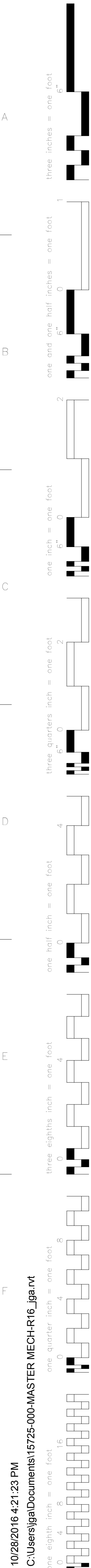
○ KEY PLAN SECOND FLOOR
1/32" = 1'-0"

| | |
|--|------|
| | |
| | Date |

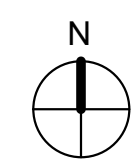
| | |
|--|------|
| | |
| | Date |



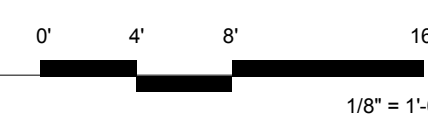
10/28/2016 4:21:23 PM
C:\Users\jg\Documents\15725-000-MASTER MECH-R16.dgn



② FIRE PROTECTION DEMOLITION PLAN - SECOND FLOOR - BID ITEM 4
1/8" = 1'-0"

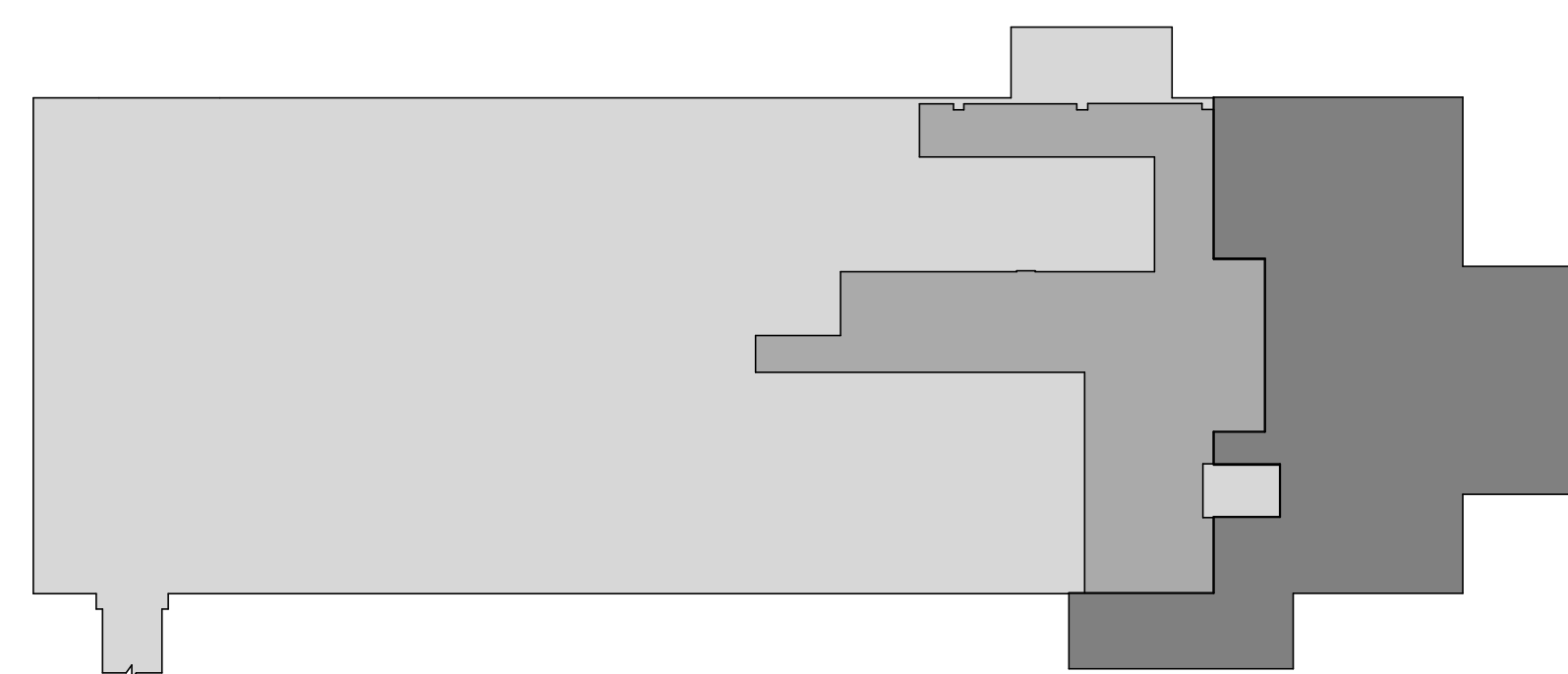


① FIRE PROTECTION PLAN - SECOND FLOOR - BID ITEM 4
1/8" = 1'-0"



| HATCH KEY | |
|-----------|--|
| | NOT IN SCOPE OF WORK |
| | LIGHT HAZARD |
| | ORDINARY HAZARD CLASS I |
| | ORDINARY HAZARD CLASS II |
| | EXTRA HAZARD |
| | AREA LOCKED DURING FIELD VISIT - UNABLE TO CONFIRM EXISTING CONDITIONS |

| | |
|-----------------------------|--|
| EXISTING | |
| REMODEL AREA | |
| NEW CONSTRUCTION (ADDITION) | |



| Revisions: | Date |
|------------|------|
| | |
| | |
| | |
| | |
| | |
| | |
| | |
| | |
| | |
| | |

CONSULTANTS:

-



ARCHITECT/ENGINEERS:



Drawing Title

FIRE PROTECTION PLAN - SECOND FLOOR - BID ITEM 4

BID SET

Project Title

STERILE PROCESSING SERVICE (SPS) SURGICAL SUITE EXPANSION, B34
Contract No.: --

Location

Robert J. Dole VA Medical Center 5500 E Kellogg, Wichita, KS

Date

10/31/2016

Checked

BOH

Drawn

RMH

Project Number

589-754

Drawing Number

FX102.4

Dwg. of

Office of
Construction
and Facilities
Management



