

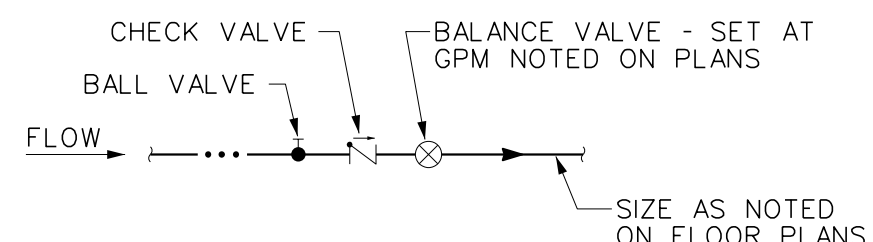
GENERAL NOTES:

- DO NOT SHUT DOWN ANY PLUMBING, FIRE PROTECTION, OR MEDICAL GAS SYSTEMS. V.A.M.C. SHALL PERFORM SHUT DOWN OF BUILDING SYSTEMS. COORDINATE WITH THE OWNER FOR ALL SHUTDOWN REQUIREMENTS.
- IF REQUIRED, PROVIDE SHUT DOWNS AND TIE-INS ON OFF HOURS TO AVOID DISRUPTION OF BUILDING SYSTEMS. COORDINATE ALL SHUT DOWN REQUIREMENTS PRIOR TO SUBMITTING BID (INCLUDE ALL WORK REQUIRED DURING OFF HOURS IN BID).
- DEMOLITION SHALL INCLUDE REMOVAL OF PIPING, HANGERS, RODS, INSULATION, SUPPORTS, FIXTURES, CARRIERS, TRIM, VALVES AND RELATED WORK. DEMOLITION SHALL INCLUDE LEGAL DISPOSAL OF ALL ITEMS REMOVED.
- REMOVE AND REPLACE EXISTING CEILINGS AS REQUIRED FOR WORK SHOWN. REPLACE ALL DAMAGED CEILINGS; PROVIDE NEW CEILINGS. FIELD VERIFY CEILING TYPES AND EXTENT OF THIS WORK PRIOR TO BID DATE AND INCLUDE IT IN THE BID.
- FIELD VERIFY ALL VALVES AND PIPING AS REQUIRED FOR WORK SHOWN.
- PROVIDE ALL WORK IN COMPLIANCE WITH ALL LOCAL, STATE AND FEDERAL CODES. OBTAIN ALL REQUIRED PERMITS. WORK SHALL BE IN COMPLIANCE WITH THE 2009 EDITION OF THE INTERNATIONAL PLUMBING CODE.
- FIELD VERIFY EXACT LOCATION, DEPTH, COMPOSITION AND CONDITION OF ALL PIPING, VALVES AND SYSTEMS AS REQUIRED FOR WORK OF THIS CONTRACT.
- PROVIDE CUTTING, CORING, PATCHING AND FIRE STOPPING OF ALL WALLS, SLABS AND DECKS AS REQUIRED FOR WORK SHOWN. COORDINATE ALL WORK WITH THE OWNER AND THE GENERAL CONTRACTOR.
- REFER TO ARCHITECTURAL DRAWINGS AND THE PROJECT SPECIFICATIONS FOR PROJECT PHASING REQUIREMENTS.
- PITCH ALL SANITARY WASTE PIPING SHOWN ON THIS DRAWING AS FOLLOWS: PIPING 3" AND SMALLER, PITCH AT 2 PERCENT (1/4" PER FOOT) MINIMUM, PIPING 4" AND LARGER, PITCH AT 1 PERCENT (1/8" PER FOOT) MINIMUM.

PLUMBING SYMBOLS LIST			
SYMBOL	DESCRIPTION	SYMBOL	DESCRIPTION
	EXISTING PIPING		ELBOW UP, ELBOW DOWN
	NEW TO EXISTING CONNECTION		DROP CONNECTION
	REMOVE TO THIS POINT		SHUT OFF VALVE
	WORK TO BE REMOVED		SHOCK ABSORBER (SA)
	COLD WATER PIPING (C)		CLEANOUT (CO)
	HOT WATER PIPING (H)		BACKFLOW PROTECTION DEVICE (RPZ)
	VENT PIPING (V)		DECK PLATE CLEANOUT
	SANITARY OR WASTE (SAN or W)		ABOVE FINISHED FLOOR
	CAP OR PLUG		EXISTING TO REMAIN
	UNION		PLUMBING CONTRACTOR
	P-TRAP		ELECTRICAL CONTRACTOR
	DIRECTION OF FLOW		MECHANICAL CONTRACTOR
	F.P.C. FIRE PROTECTION CONTRACTOR		GENERAL CONTRACTOR

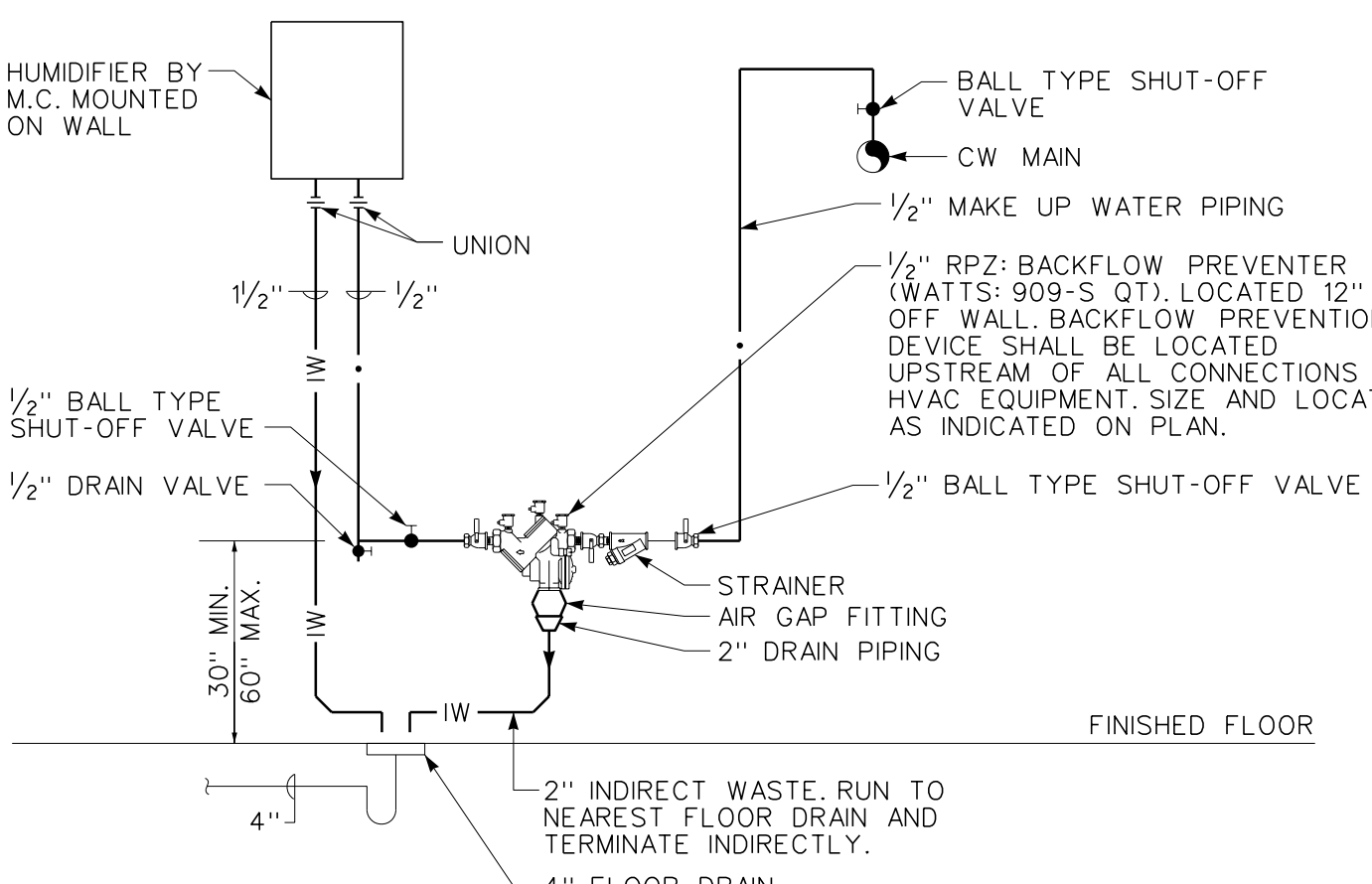
PLUMBING FIXTURE AND EQUIPMENT CONNECTION SCHEDULE					
DESIGNATION	DESCRIPTION	COLD WATER	HOT WATER	WASTE/ SOIL	VENT
SINK-A	SINK	1/2"	1/2"	1/2"	1/2"
SINK-B	SINK	1/2"	1/2"	1/2"	1/2"
SINK-C	SINK	1/2"	1/2"	1/2"	1/2"
WC-A	WATER CLOSET	1"	----	4"	2"
WC-B	"MOCK" WATER CLOSET	----	----	----	----
LAV-A	LAVATORY	1/2"	1/2"	1/2"	1/2"
TUB-A	"MOCK" BATHTUB	----	----	----	----
EW-C-A	ELECTRIC WATER COOLER	1/2"	----	1/2"	1/2"

SHOCK ABSORBER SCHEDULE			
NO.	FIX. UNIT RATING	SIZE IN INCHES	PDI SYMBOL
SA-A	1-11	3/4"	A



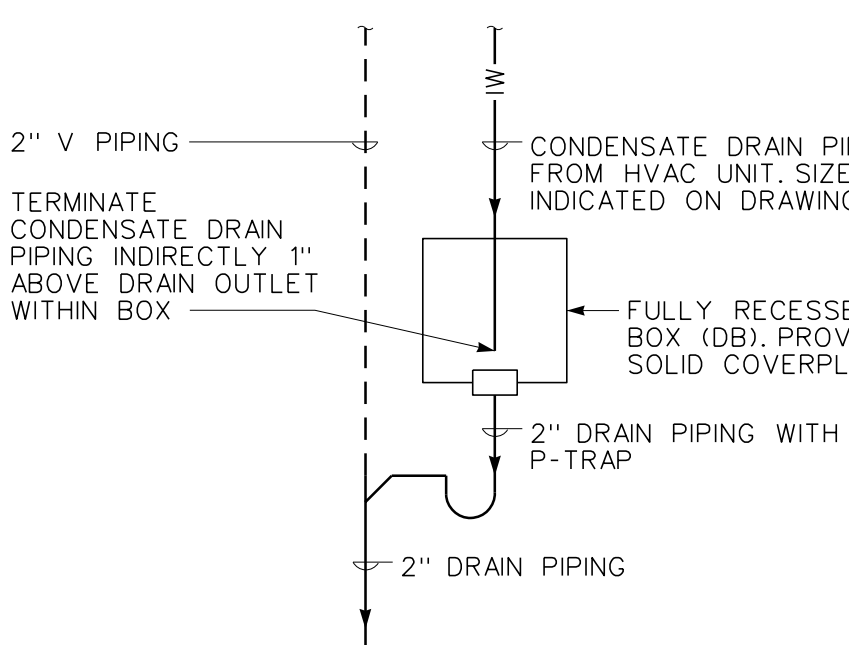
HOT WATER RECIRCULATION BALANCE VALVE ARRANGEMENT DETAIL

NO SCALE



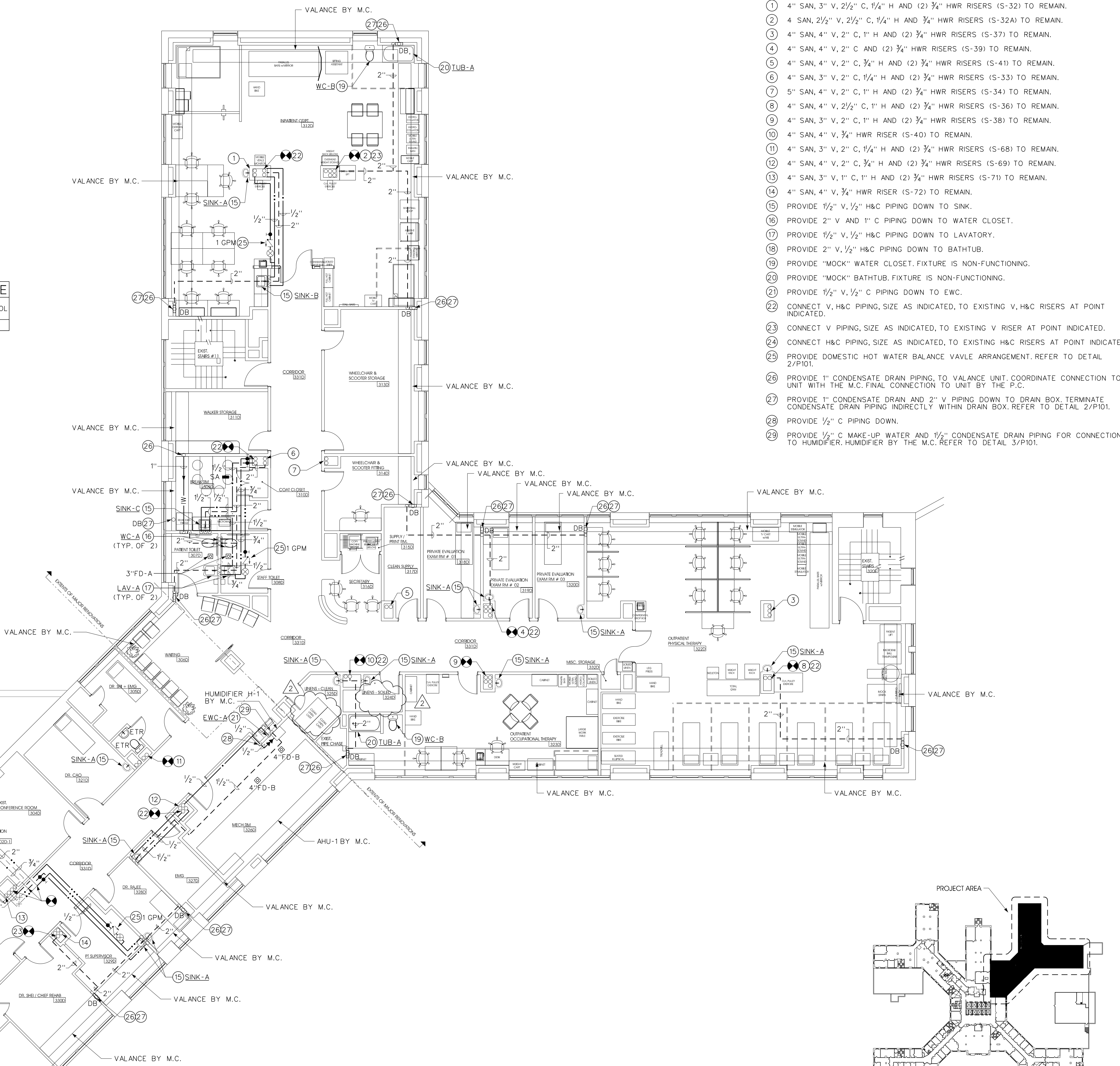
MAKE-UP WATER BACKFLOW PREVENTION DEVICE DETAIL

NO SCALE



DRAIN BOX DETAIL

NO SCALE

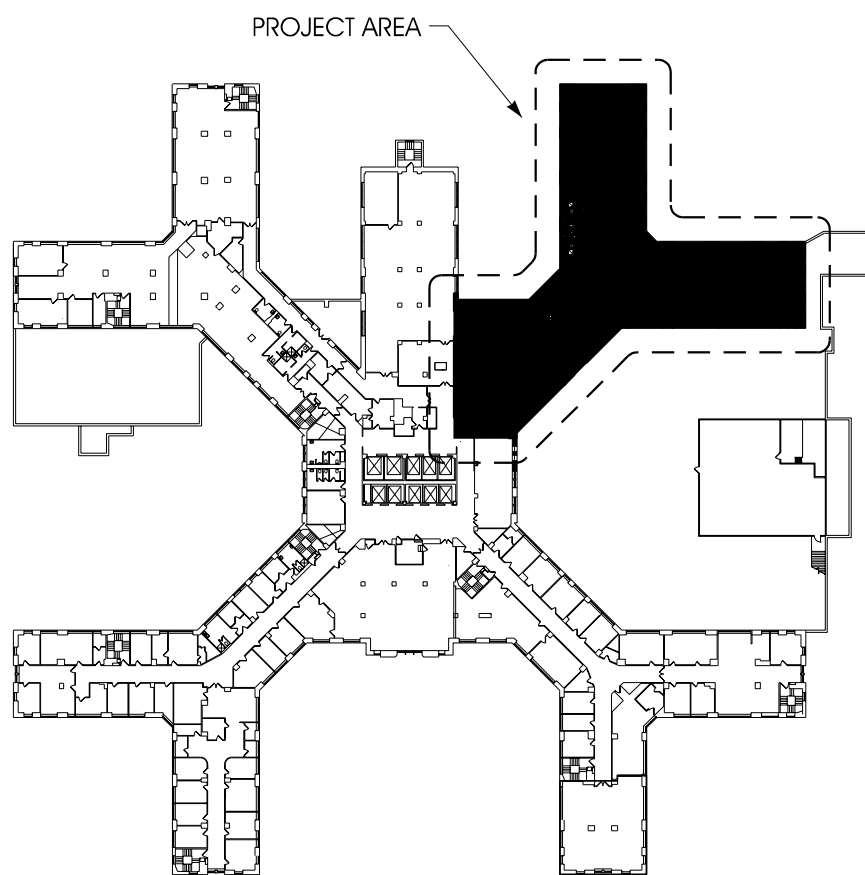


PARTIAL THIRD FLOOR PLAN - PLUMBING

1/8" = 1'-0"

DRAWING NOTES:

- 4" SAN, 3" V, 2 1/2" C, 1 1/4" H AND (2) 3/4" HWR RISERS (S-32) TO REMAIN.
- 4 SAN, 2 1/2" V, 2 1/2" C, 1 1/4" H AND 3/4" HWR RISERS (S-32A) TO REMAIN.
- 4" SAN, 4" V, 2" C, 1" H AND (2) 3/4" HWR RISERS (S-37) TO REMAIN.
- 4" SAN, 4" V, 2" C AND (2) 3/4" HWR RISERS (S-39) TO REMAIN.
- 4" SAN, 4" V, 2" C, 3/4" H AND (2) 3/4" HWR RISERS (S-41) TO REMAIN.
- 4" SAN, 3" V, 2" C, 1 1/4" H AND (2) 3/4" HWR RISERS (S-33) TO REMAIN.
- 5" SAN, 4" V, 2" C, 1" H AND (2) 3/4" HWR RISERS (S-34) TO REMAIN.
- 4" SAN, 4" V, 2 1/2" C, 1" H AND (2) 3/4" HWR RISERS (S-36) TO REMAIN.
- 4" SAN, 3" V, 2" C, 1" H AND (2) 3/4" HWR RISERS (S-38) TO REMAIN.
- 4" SAN, 4" V, 3/4" HWR RISER (S-40) TO REMAIN.
- 4" SAN, 3" V, 2" C, 1 1/4" H AND (2) 3/4" HWR RISERS (S-68) TO REMAIN.
- 4" SAN, 4" V, 2" C, 3/4" H AND (2) 3/4" HWR RISERS (S-69) TO REMAIN.
- 4" SAN, 3" V, 1" C, 1" H AND (2) 3/4" HWR RISERS (S-71) TO REMAIN.
- 4" SAN, 4" V, 3/4" HWR RISER (S-72) TO REMAIN.
- PROVIDE 1/2" V, 1/2" H&C PIPING DOWN TO SINK.
- PROVIDE 2" V AND 1" C PIPING DOWN TO WATER CLOSET.
- PROVIDE 1/2" V, 1/2" H&C PIPING DOWN TO LAVATORY.
- PROVIDE 2" V, 1/2" H&C PIPING DOWN TO BATHTUB.
- PROVIDE "MOCK" WATER CLOSET. FIXTURE IS NON-FUNCTIONING.
- PROVIDE "MOCK" BATHTUB. FIXTURE IS NON-FUNCTIONING.
- PROVIDE 1/2" V, 1/2" C PIPING DOWN TO EWC.
- CONNECT V, H&C PIPING, SIZE AS INDICATED, TO EXISTING V, H&C RISERS AT POINT INDICATED.
- CONNECT V PIPING, SIZE AS INDICATED, TO EXISTING V RISER AT POINT INDICATED.
- CONNECT H&C PIPING, SIZE AS INDICATED, TO EXISTING H&C RISERS AT POINT INDICATED.
- PROVIDE DOMESTIC HOT WATER BALANCE VALVE ARRANGEMENT. REFER TO DETAIL 2/P101.
- PROVIDE 1" CONDENSATE DRAIN PIPING, TO VALANCE UNIT. COORDINATE CONNECTION TO UNIT WITH THE M.C. FINAL CONNECTION TO UNIT BY THE P.C.
- PROVIDE 1" CONDENSATE DRAIN AND 2" V PIPING DOWN TO DRAIN BOX. TERMINATE CONDENSATE DRAIN PIPING INDIRECTLY WITHIN DRAIN BOX. REFER TO DETAIL 2/P101.
- PROVIDE 1/2" C PIPING DOWN.
- PROVIDE 1/2" C MAKE-UP WATER AND 1 1/2" CONDENSATE DRAIN PIPING FOR CONNECTION TO HUMIDIFIER. HUMIDIFIER BY THE M.C. REFER TO DETAIL 3/P101.



KEYPLAN

NO SCALE

REVISIONS:		DATE:
#01 - ISSUED FOR BIDDING		07.MAR.2012
#02 - ADDENDUM #1		06.APR.2012

VA WESTERN NEW YORK HEALTHCARE SYSTEM
3495 BAILEY AVENUE
BUFFALO, NY 14202



tmm architect
 100 DELAWARE AVE.
 BUFFALO, NY 14202
 P: 716.883.3516 F: 716.883.4740
 CONTACTS:
 JEFFREY J. MARCINIAW (PROJECT MANAGER)
 E: JMARCI@TMMARCHITECT.COM

SEINNA ENVIRONMENTAL TECHNOLOGIES, LLC
 160 ELMWOOD AVE.
 BUFFALO, NY 14222-2204
 P: 716.332.3134
 CONTACTS:
 JOHN PINEY
 E: JPINEY@SEINNAET.COM

IBC ENGINEERING
 2495 MONROE ST. # 318
 BUFFALO, NY 14214-2192
 P: 716.836.2319 F: 716.836.2319
 CONTACTS:
 JOSHUA W. MEE (PROJECT MANAGER)
 E: JME@IBCENG.COM

ARCHITECT & CONSULTANTS:

STAMP

CARDIOLOGY MANAGER	DATE	ENGINEERING MANAGER	DATE
INFECTION CONTROL	DATE	CARELINE MANAGER	DATE
SAFETY OFFICER	DATE	CHIEF OF STAFF	DATE

Drawing Title: PARTIAL THIRD FLOOR PLAN - PLUMBING	
MEDICAL CENTER DIRECTOR	DATE
ASSOCIATE MEDICAL CENTER DIRECTOR	DATE

Project Title: VAMC PHYSICAL THERAPY RENOVATIONS	
Building Number: 1	Checked: DDR
Location: V.A.M.C. BUFFALO, NEW YORK	Drawn: KGP

Date: 14.JAN.2011
Station Number: 528
Sheet: 10-107-P101



Department of Veterans Affairs