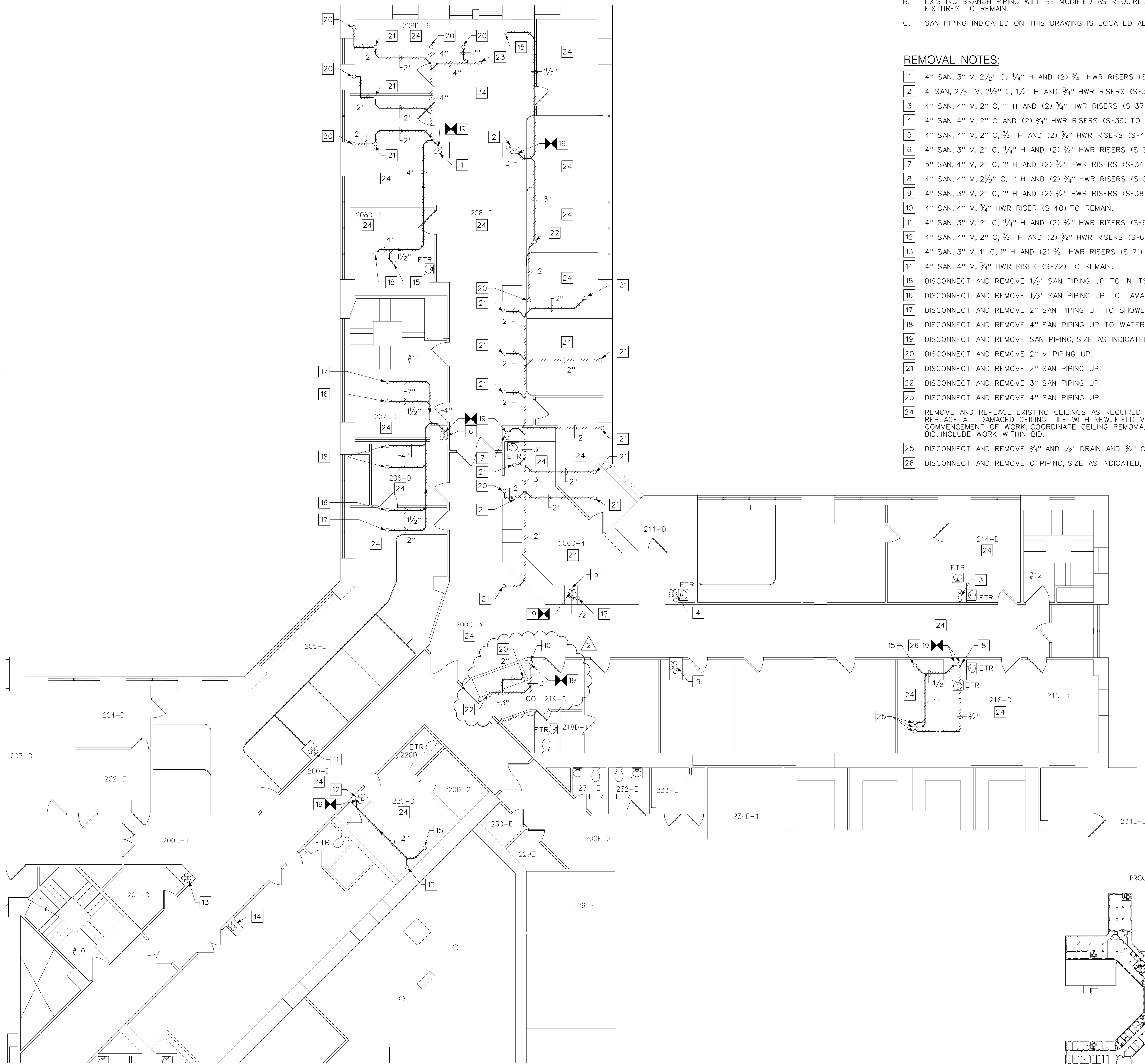


GENERAL NOTES:

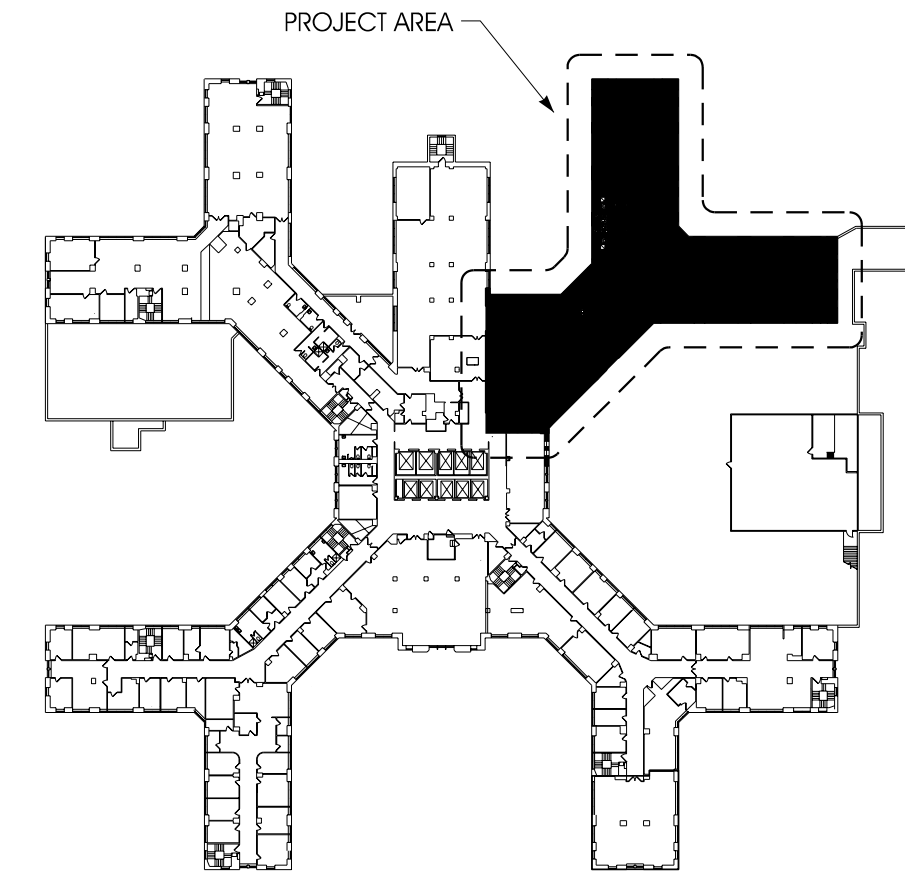
- A. PIPING SHOWN ON THIS DRAWING IS BASED ON RECORD DRAWINGS AND CONDITIONS VIEWED DURING FIELD INVESTIGATIONS. THE P.C. SHALL CONFIRM EXISTING PIPING AND SIZES. NOTIFY THE ENGINEER AND ARCHITECT OF SIGNIFICANT DISCREPANCIES PRIOR TO COMMENCEMENT OF WORK.
- B. EXISTING BRANCH PIPING WILL BE MODIFIED AS REQUIRED TO MAINTAIN OPERATION OF PLUMBING FIXTURES TO REMAIN.
- C. SAN PIPING INDICATED ON THIS DRAWING IS LOCATED ABOVE THE CEILING.

REMOVAL NOTES:

- 1 4" SAN, 3" V, 2 1/2" C, 1 1/4" H AND (2) 3/4" HWR RISERS (S-32) TO REMAIN.
- 2 4 SAN, 2 1/2" V, 2 1/2" C, 1 1/4" H AND 3/4" HWR RISERS (S-32A) TO REMAIN.
- 3 4" SAN, 4" V, 2" C, 1" H AND (2) 3/4" HWR RISERS (S-37) TO REMAIN.
- 4 4" SAN, 4" V, 2" C AND (2) 3/4" HWR RISERS (S-39) TO REMAIN.
- 5 4" SAN, 4" V, 2" C, 3/4" H AND (2) 3/4" HWR RISERS (S-41) TO REMAIN.
- 6 4" SAN, 3" V, 2" C, 1 1/4" H AND (2) 3/4" HWR RISERS (S-33) TO REMAIN.
- 7 5" SAN, 4" V, 2" C, 1" H AND (2) 3/4" HWR RISERS (S-34) TO REMAIN.
- 8 4" SAN, 4" V, 2 1/2" C, 1" H AND (2) 3/4" HWR RISERS (S-36) TO REMAIN.
- 9 4" SAN, 3" V, 2" C, 1" H AND (2) 3/4" HWR RISERS (S-38) TO REMAIN.
- 10 4" SAN, 4" V, 3/4" HWR RISER (S-40) TO REMAIN.
- 11 4" SAN, 3" V, 2" C, 1 1/4" H AND (2) 3/4" HWR RISERS (S-68) TO REMAIN.
- 12 4" SAN, 4" V, 2" C, 3/4" H AND (2) 3/4" HWR RISERS (S-69) TO REMAIN.
- 13 4" SAN, 3" V, 1" C, 1" H AND (2) 3/4" HWR RISERS (S-71) TO REMAIN.
- 14 4" SAN, 4" V, 3/4" HWR RISER (S-72) TO REMAIN.
- 15 DISCONNECT AND REMOVE 1 1/2" SAN PIPING UP TO ITS ENTIRETY.
- 16 DISCONNECT AND REMOVE 1 1/2" SAN PIPING UP TO LAVATORY IN ITS ENTIRETY.
- 17 DISCONNECT AND REMOVE 2" SAN PIPING UP TO SHOWER IN ITS ENTIRETY.
- 18 DISCONNECT AND REMOVE 4" SAN PIPING UP TO WATER CLOSET IN ITS ENTIRETY.
- 19 DISCONNECT AND REMOVE SAN PIPING, SIZE AS INDICATED, BACK TO RISER AND CAP.
- 20 DISCONNECT AND REMOVE 2" V PIPING UP.
- 21 DISCONNECT AND REMOVE 2" SAN PIPING UP.
- 22 DISCONNECT AND REMOVE 3" SAN PIPING UP.
- 23 DISCONNECT AND REMOVE 4" SAN PIPING UP.
- 24 REMOVE AND REPLACE EXISTING CEILINGS AS REQUIRED FOR REMOVAL OF PIPING SHOWN. REPLACE ALL DAMAGED CEILING TILE WITH NEW FIELD VERIFY CEILING TYPES PRIOR TO COMMENCEMENT OF WORK. COORDINATE CEILING REMOVAL WORK WITH THE OWNER PRIOR TO BID. INCLUDE WORK WITHIN BID.
- 25 DISCONNECT AND REMOVE 3/4" AND 1/2" DRAIN AND 3/4" C PIPING UP IN THEIR ENTIRETY.
- 26 DISCONNECT AND REMOVE C PIPING, SIZE AS INDICATED, BACK TO RISER AND CAP.



PARTIAL SECOND FLOOR PLAN - PLUMBING REMOVALS 1
1/8" = 1'-0"



KEYPLAN
NO SCALE

REVISIONS:	DATE:
#01 - ISSUED FOR BIDDING	07.MAR.2012
#02 - ADDENDUM #1	06.APR.2012

VA WESTERN NEW YORK HEALTHCARE SYSTEM
3495 BAILEY AVENUE
BUFFALO, NY 14202



tmm architect
TMM ARCHITECTURE, DESIGN & PLANNING, LLC
148 DELAWARE AVE.
BUFFALO, NY 14202
P: 716.883.3516 F: 716.883.4740

CONTACTS:
JEFFREY J. MARCINIAW (PROJECT MANAGER)
JEFFREY J. MARCINIAW (PROJECT MANAGER)
JEFFREY J. MARCINIAW (PROJECT MANAGER)

SEINNA ENVIRONMENTAL TECHNOLOGIES, LLC
1650 ELMWOOD AVE.
BUFFALO, NY 14222-2204
P: 716.332.3134

CONTACTS:
JOHN P. RIZOV
JOHN P. RIZOV
JOHN P. RIZOV

IBC ENGINEERING
2495 MONROE ST. # 318
BUFFALO, NY 14214-2192
P: 716.836.2319 F: 716.836.2319

CONTACTS:
JOSHUA W. MEE (PROJECT MANAGER)
JOSHUA W. MEE (PROJECT MANAGER)
JOSHUA W. MEE (PROJECT MANAGER)

STAMP

CARDIOLOGY MANAGER	DATE	ENGINEERING MANAGER	DATE
INFECTION CONTROL	DATE	CARELINE MANAGER	DATE
SAFETY OFFICER	DATE	CHIEF OF STAFF	DATE

Drawing Title: PARTIAL SECOND FLOOR PLAN - PLUMBING REMOVALS	
MEDICAL CENTER DIRECTOR	DATE
ASSOCIATE MEDICAL CENTER DIRECTOR	DATE

Project Title: VAMC PHYSICAL THERAPY RENOVATIONS	
Building Number: 1	Checked: DDR
Location: V.A.M.C. BUFFALO, NEW YORK	Drawn: KGP

Date: 14.JAN.2011
Station Number: 528
Sheet: 10-107-PD100

Office of Facilities

Department of Veterans Affairs