





1 FIRE PROTECTION DEMOLITION PLAN - 6TH FLOOR WEST
1/4" = 1'-0"

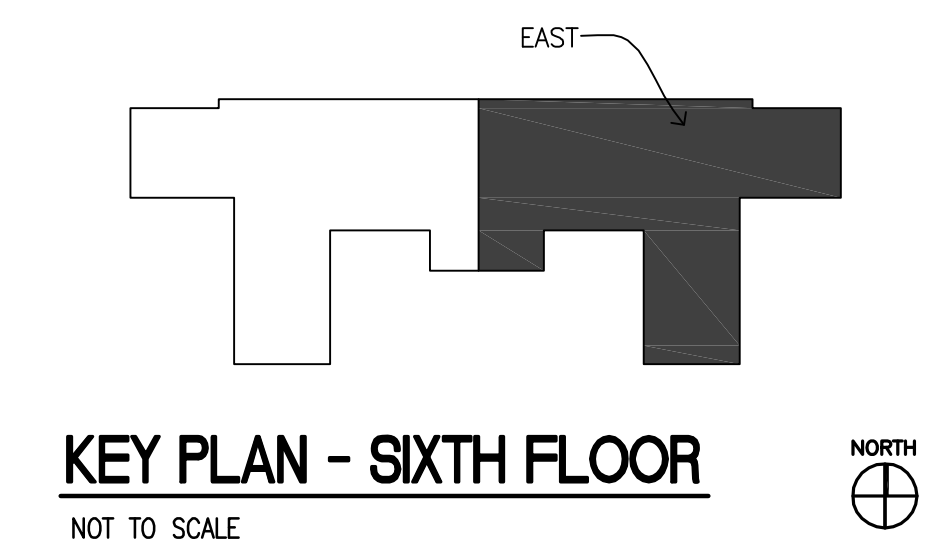
- KEYED NOTES
- 1

DEMOLISH ALL SPRINKLER HEADS AND PIPING BACK TO MAIN ZONE VALVE AT RISER UNLESS OTHERWISE NOTED.
- 2

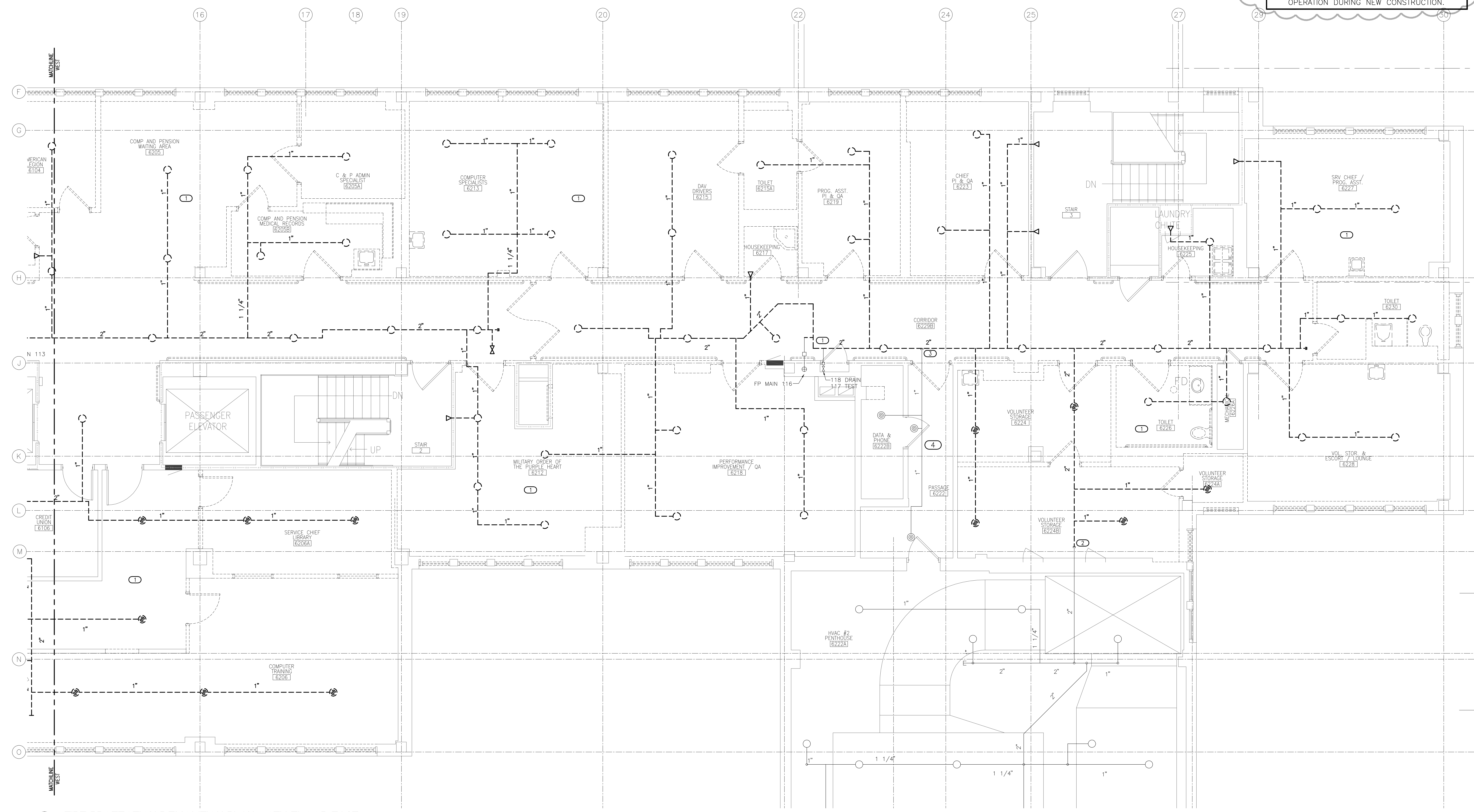
TEMPORARILY CAP 2" FIRE PROTECTION MAIN SERVING SIXTH FLOOR MECHANICAL PENTHOUSE. PROVIDE TEMPORARY FIRE PROTECTION MAINS TO SIXTH FLOOR PENTHOUSES TO MAINTAIN PROPER OPERATION DURING NEW CONSTRUCTION.

		<div>CONSULTANTS:</div> <div><div>engineers consultants commissioning MEP Associates, LLC 2750 Arbor Court Eau Claire, WI 54701 Phone: 715.832.5680 Fax: 715.832.5688 www.mepassociates.com MEP PROJECT NO.: N08.11.03</div></div>		<div>ARCHITECT/ENGINEERS:</div> <div><div>420 RAIL STREET NEGAUNEE, MI 49866 PHONE: 906-475-6616 FAX: 906-475-6954 NDW PROJECT NUMBER:1111</div></div>	<div>Drawing Title</div> <div>FIRE PROTECTION DEMOLITION PLAN - 6TH FLOOR WEST</div>	<div>Project Title</div> <div>Renovate 6th Floor Lab</div>	<div>Project Number</div> <div>585-11-114</div>	<div>Office of Construction and Facilities Management</div> <div> Department of Veterans Affairs</div>		
					<div>Building Number</div> <div>1</div>	<div>Drawing Number</div> <div>FPD.101</div>				
<div>ADDENDUM #1</div> <div>5/7/2012</div>	<div>FOR BIDS</div> <div>4/11/2012</div>				<div>Location</div> <div>IRON MOUNTAIN, MICHIGAN</div>	<div>Date</div> <div>2-15-2012</div>	<div>Checked</div> <div>TCC</div>		<div>Drawn</div> <div>NCF</div>	<div>Dwg. 19 of 82</div>
<div>CONSTRUCTION DOCUMENTS</div> <div>2/15/2012</div>	<div>Revisions</div> <div>Date</div>				<div>Approved Project Director</div>					

three inches = one foot
one and one half inches = one foot
one inch = one foot
three quarters inch = one foot
one half inch = one foot
three eighths inch = one foot
one quarter inch = one foot
one eighth inch = one foot



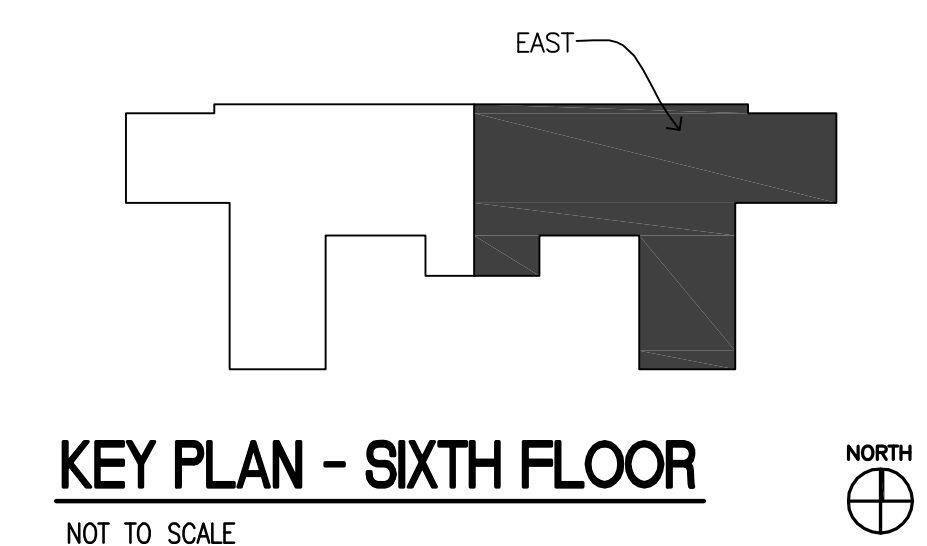
- KEYED NOTES**
- 1 DEMOLISH ALL SPRINKLER HEADS AND PIPING BACK TO MAIN ZONE VALVE AT RISER UNLESS OTHERWISE NOTED.
 - 2 TEMPORARILY CAP 2" FIRE PROTECTION MAIN SERVING SIXTH FLOOR MECHANICAL PENTHOUSE. PROVIDE TEMPORARY FIRE PROTECTION MAINS TO SIXTH FLOOR PENTHOUSES TO MAINTAIN PROPER OPERATION DURING NEW CONSTRUCTION.
 - 3 TEMPORARILY CAP 1" BRANCH LINE FOR CONNECTION DURING NEW CONSTRUCTION.
 - 4 PROVIDE TEMPORARY FIRE PROTECTION MAINS TO EXISTING AREAS NOT TO BE DEMOLISHED TO MAINTAIN PROPER OPERATION DURING NEW CONSTRUCTION.



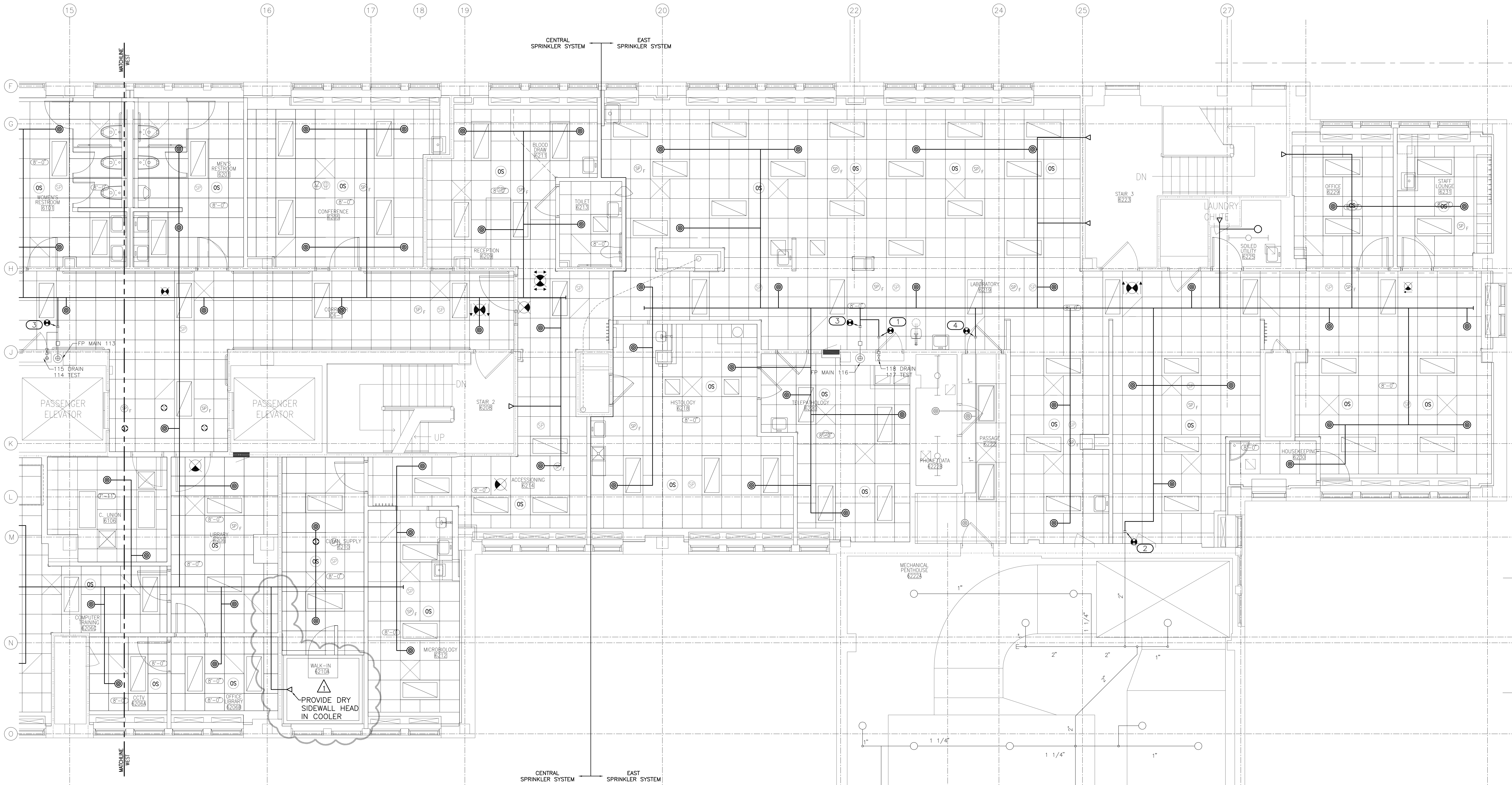
1 FIRE PROTECTION DEMOLITION PLAN - 6TH FLOOR EAST
1/4" = 1'-0"

CONSULTANTS: engineers consultants commissioning MEP Associates, LLC 2750 Arbor Court Eau Claire, WI 54601 Phone: 715.832.5680 Fax: 715.832.5688 www.mepassociates.com MEP PROJECT NO.: N08.11.03		 ARCHITECT/ENGINEERS: 420 RAIL STREET NEGAUNEE, MI 49866 PHONE: 906-475-6616 FAX: 906-475-6954 NDW PROJECT NUMBER: 1111		Drawing Title FIRE PROTECTION DEMOLITION PLAN - 6TH FLOOR EAST Approved Project Director		Project Title Renovate 6th Floor Lab Location IRON MOUNTAIN, MICHIGAN Date 2-15-2012 Checked TCC Drawn NCF		Project Number 585-11-114 Building Number 1 Drawing Number FPD.102 Dwg. 20 of 82		Office of Construction and Facilities Management Department of Veterans Affairs	
ADDENDUM #1 FOR BIDS CONSTRUCTION DOCUMENTS Revisions: Date											




three inches = one foot
one and one half inches = one foot
one inch = one foot
three quarters inch = one foot
one half inch = one foot
three eighths inch = one foot
one quarter inch = one foot
one eighth inch = one foot



- KEYED NOTES**
- 1 CONNECT NEW TEST DRAIN PIPE TO EXISTING TEST DRAIN PIPE.
 - 2 CONNECT NEW 2" FIRE PROTECTION MAIN TO EXISTING 2" FIRE PROTECTION MAIN SERVING SIXTH FLOOR MECHANICAL PENTHOUSE.
 - 3 CONNECT NEW FIRE PROTECTION MAIN TO EXISTING FIRE PROTECTION MAIN.
 - 4 CONNECT NEW 1" FIRE PROTECTION PIPE TO EXISTING 1" FIRE PROTECTION PIPE.



1 FIRE PROTECTION PLAN - 6TH FLOOR EAST
1/4" = 1'-0"

		<div>CONSULTANTS:</div> <div><div>engineers consultants commissioning MEP Associates, LLC 2720 Arbor Court Eau Claire, WI 54601 Phone: 715.832.5580 Fax: 715.832.5568 www.mepassociates.com MEP PROJECT NO.: N08.11.03</div></div>	<div></div> <div><div>ARCHITECT/ENGINEERS:</div><div><div>NORTHERN DESIGN WORKS</div><div>420 RAIL STREET NEGAUNEE, MI 49866 PHONE: 906-475-6616 FAX: 906-475-6954 NDW PROJECT NUMBER:1111</div></div></div>	<div>Drawing Title</div> <div>FIRE PROTECTION PLAN - 6TH FLOOR EAST</div> <div>Approved Project Director</div>	<div>Project Title</div> <div>Renovate 6th Floor Lab</div> <div>Location</div> <div>IRON MOUNTAIN, MICHIGAN</div> <div>Date</div> <div>2-15-2012</div> <div>Checked</div> <div>TCC</div> <div>Drawn</div> <div>NCF</div>	<div>Project Number</div> <div>585-11-114</div> <div>Building Number</div> <div>1</div> <div>Drawing Number</div> <div>FP.102</div> <div>Dwg. 22 of 82</div>	<div>Office of Construction and Facilities Management</div> <div> Department of Veterans Affairs</div>
ADDENDUM #1	5/7/2012						
FOR BIDS	4/11/2012						
CONSTRUCTION DOCUMENTS	2/15/2012						
Revisions:	Date						