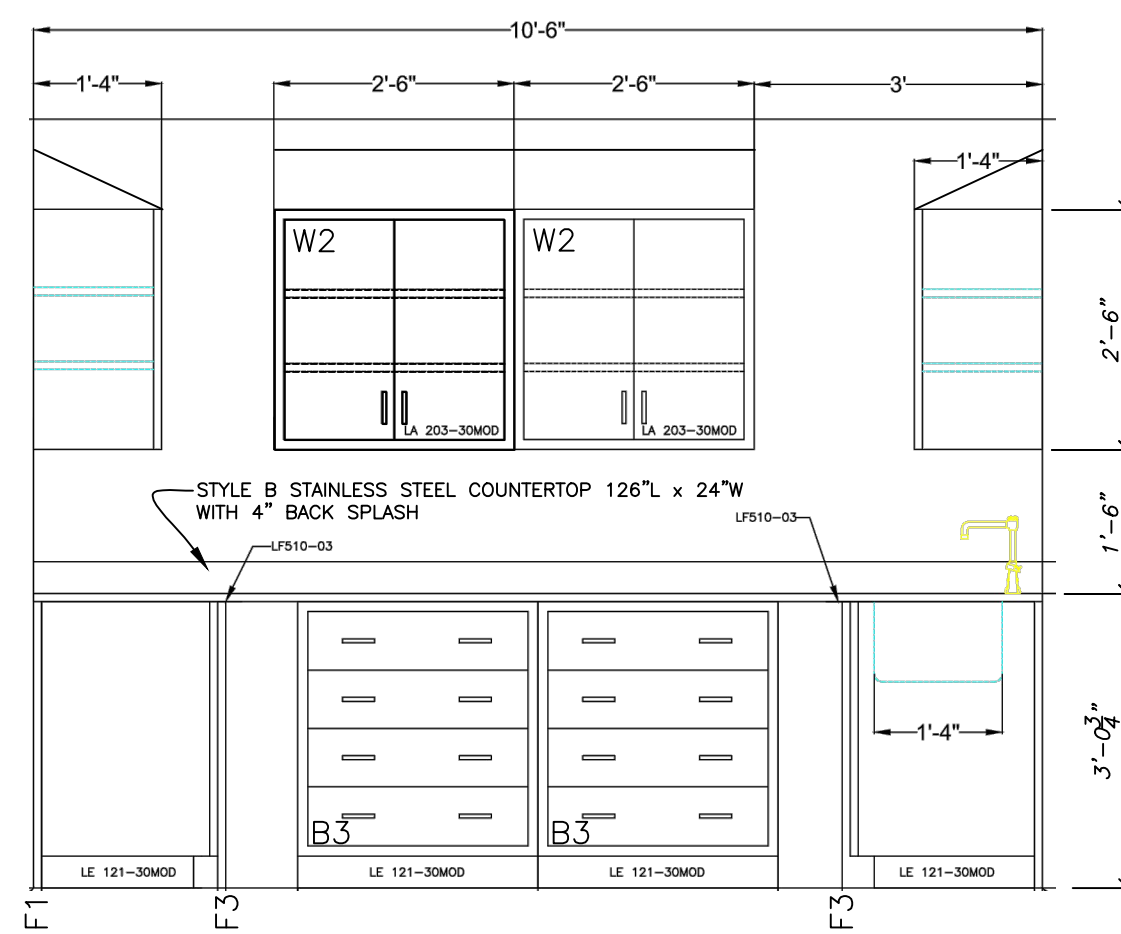
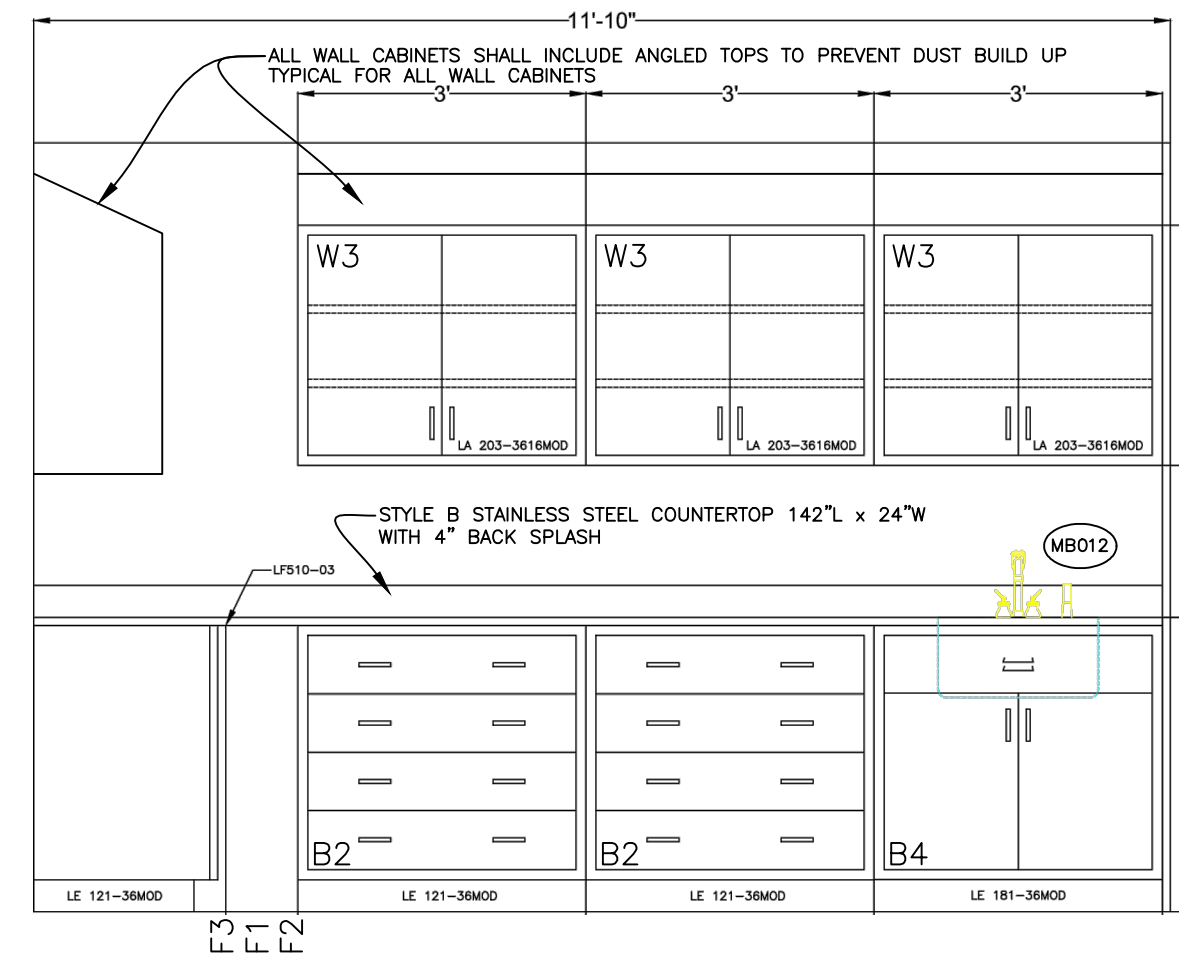


ELEVATION A
SCALE: 1/2" = 1'-0"



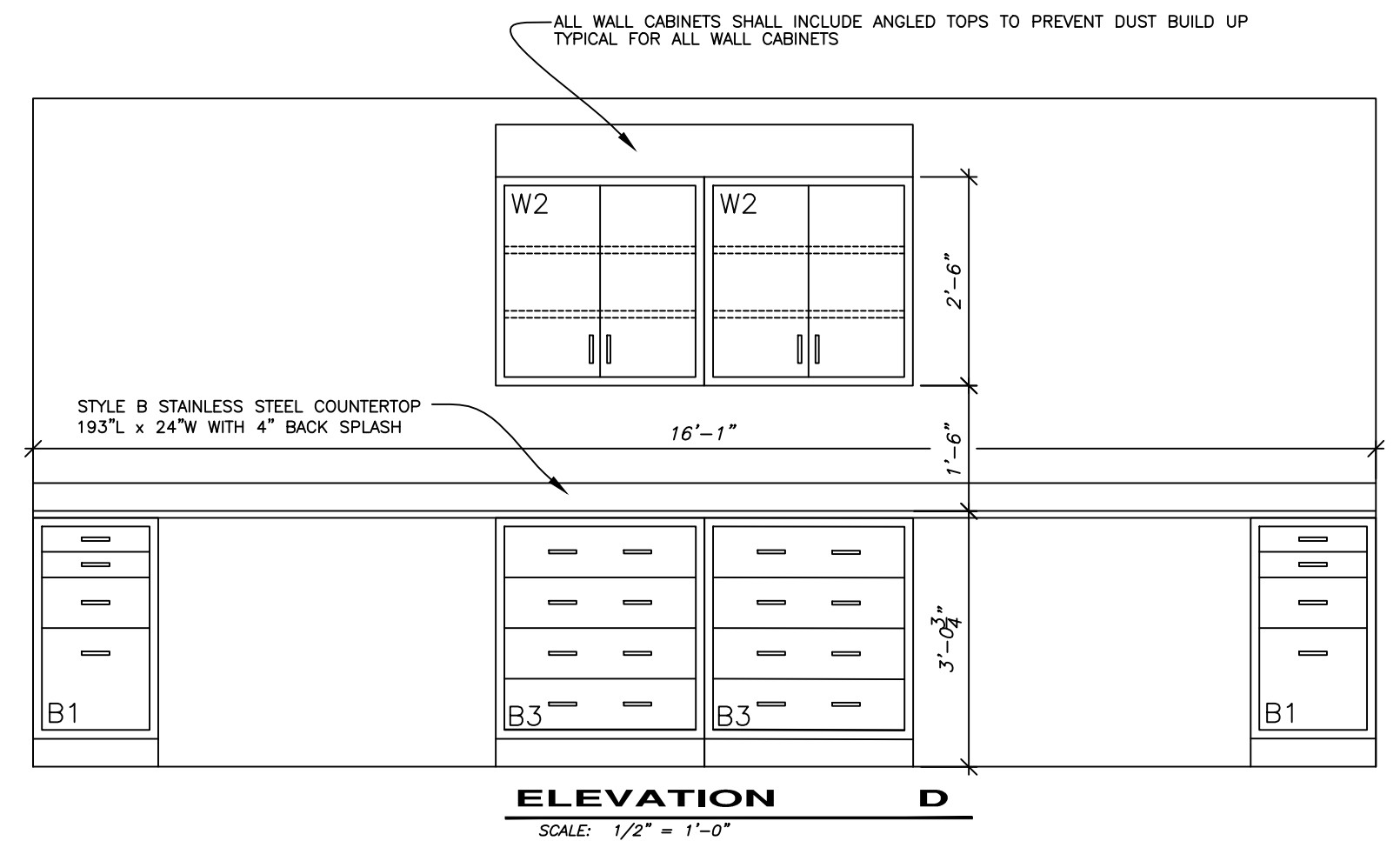
ELEVATION B
SCALE: 1/2" = 1'-0"



ELEVATION C
SCALE: 1/2" = 1'-0"

EQUIPMENT INFORMATION & SPECIALIZED ACCESSORIES TO BE INCLUDED FOR THIS PROJECT

- MB650** * ELEVATING GROSSING WORKSTATION (LEFT HAND SINK)
 DIMENSIONS: 60" LONG X 29" DEEP
 STANDARD FEATURES INCLUDE:
 * ALL 304 STAINLESS STEEL CONSTRUCTION
 * WORKING AREA ELEVATING RANGE: 29-1/2" TO 41-1/2" H
 * OVERALL ELEVATING RANGE: 71-1/2" (180CM) TO 83-1/2" (210CM)H
 * SINK: 19" (48CM) LONG X 14" (36CM) WIDE X 10" (25CM) DEEP
 * SWING SPOUT FAUCET WITH WRIST BLADE HANDLES AND VACUUM BREAKER
 * RECESSED FLUORESCENT LIGHTING
 * WHITE POLYETHYLENE DISSECTION BOARD 23" (58CM) L X 16" (40CM) W X 3/4" H
 * INCH/CENTIMETER RULER
 * GFCI DUPLEX ELECTRICAL RECEPTACLE WITH WATER TIGHT COVER
 * 14" (35CM) STAINLESS STEEL ADJUSTABLE SHELF
 * MAGNETIC TOOL BAR
 * PAPER TOWEL HOLDER
 * ONE (1) LARGE AND ONE (1) SMALL STAINLESS STEEL ORGANIZER BIN
 * BACKDRAFT VENTILATION - EQUIPPED WITH TWO 8" (20CM) DIAMETER FLEXIBLE FACTORY INSTALLED EXHAUST DUCTS WHICH CAN BE CONNECTED TO ANY IN-HOUSE VENTILATION SYSTEM.
 * KNEE SPACE AREA; SIDE TO SIDE DIMENSIONS: 34.5" (86CM)
 * FRONT EDGE TO FRONT UPPER SKIRTING 7" (17CM)
 * FLOOR TO UNDER EDGE OF WORK SURFACE VARIES FROM A MINIMUM OF 26" (66CM) TO A MAXIMUM OF 38" (96CM)
- BL800** DISPOSAL 1 HORSEPOWER
 * HEAVY DUTY
 * INCLUDES SOLENOID AND VACUUM BREAKER
- MB009** PERIMETER RINSE
 * FULL PERIMETER RINSE ON THREE SIDES.
 * CONTROL VALVE W/ATMOSPHERIC VACUUM BREAKER PROTECTION INCLUDED FOR WATER FLOW ADJUSTMENT.
- MB011** SAFETY SPLASH SHIELD
 * 11" X 12" LEXAN SHIELD ON FLEXIBLE ARM FOR EASY POSITIONING
 * REMOVABLE
- MB012** HAND SPRAY RINSE
 * CHROME PLATED BRASS HAND SPRAYER WITH SOFT SPRAY & 60" LONG HIGH PRESSURE HOSE HAND SPRAY RINSE FOR EASY AND CONTROLLED RINSING OF WORK SURFACE
- MB022** HALOGEN TASK LIGHTING--SINGLE
 * ONE (1) HALOGEN LIGHTING SYSTEM
 * 20 WATTS.
 * OVERHEAD MOUNT WITH 20-INCH FLEXIBLE ARM
- MB003** FORMALIN DISPENSING CONTAINER
 * 2.5 GALLON CAPACITY NALGENE POLY DISPENSING CONTAINER
 * DISPENSING VALVE PROVIDED FOR SMALL CONTROLLED DISPENSING OF CUSTOMER SUPPLIED FOMALIN.
- MB019** FORMALIN COLLECTION SYSTEM
 * 2.5 GALLON COLLECTION CARBOY W/ EASY GRIP HANDLES LOCATED UNDER GROSSING STATION
 * QUICK DISCONNECTS INCLUDED WITH SAFETY CAPS PROVIDED FOR SAFE TRANSPORT TO DISPOSAL OR RECYCLING AREA.



ELEVATION D
SCALE: 1/2" = 1'-0"

NOTE: ALL PLAN & ELEVATION DETAILS ARE BASED ON EQUIPMENT AND CASEWORK MADE BY MOPEC CORPORATION. THESE ITEMS ARE PROVIDED FOR CLARIFICATION TO EQUIPMENT LAYOUT AND EQUIPMENT REQUIREMENTS REQUIRED BY THIS CONTRACT. MOPEC EQUIPMENT OR APPROVED EQUAL SHALL BE INSTALLED UNDER THIS CONTRACT.

UNITED STATES DEPARTMENT OF VETERANS AFFAIRS VA MEDICAL CENTER - 1540 SPRING VALLEY DRIVE - HUNTINGTON WV 25704			
DRAWING TITLE: ELEVATIONS & ACCESSORY LIST		PROJECT TITLE: RENOVATE HISTOLOGY LAB	
APPROVED: CHRIS ECKLES ASST CHIEF, ENGINEERING		BUILDING: 1S	PROJECT NUMBER: 12-104
APPROVED: JOHN KLIM CHIEF, ENGINEERING		DRAWN: STEVE ELROD	DATE: FEB '12
			DRAWING NUMBER: A3