

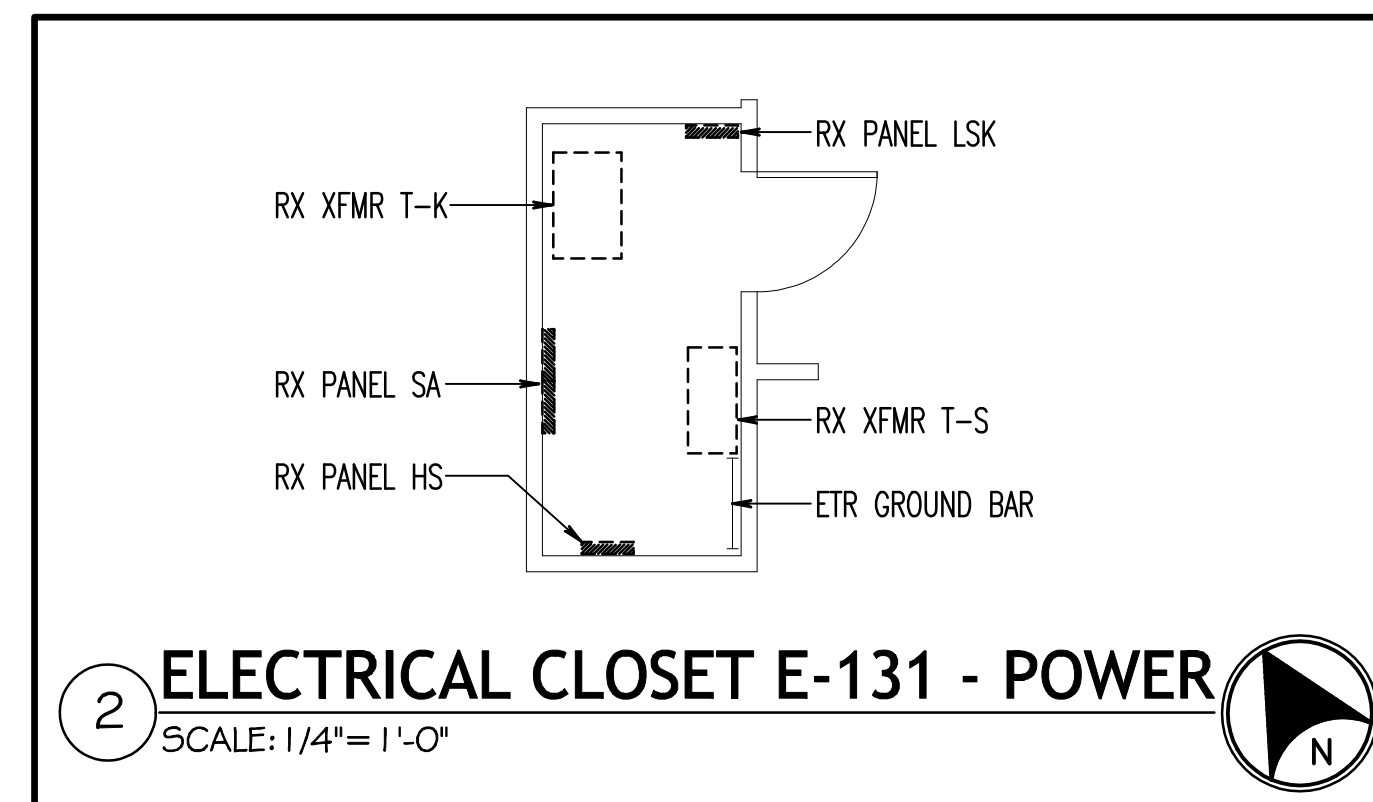
1 GROUND FLOOR PLAN - ELECTRICAL DEMOLITION - POWER AND COMMUNICATIONS
SCALE: 1/8" = 1'-0"

DRAWING NOTES: (APPLICABLE TO THIS DRAWING ONLY)

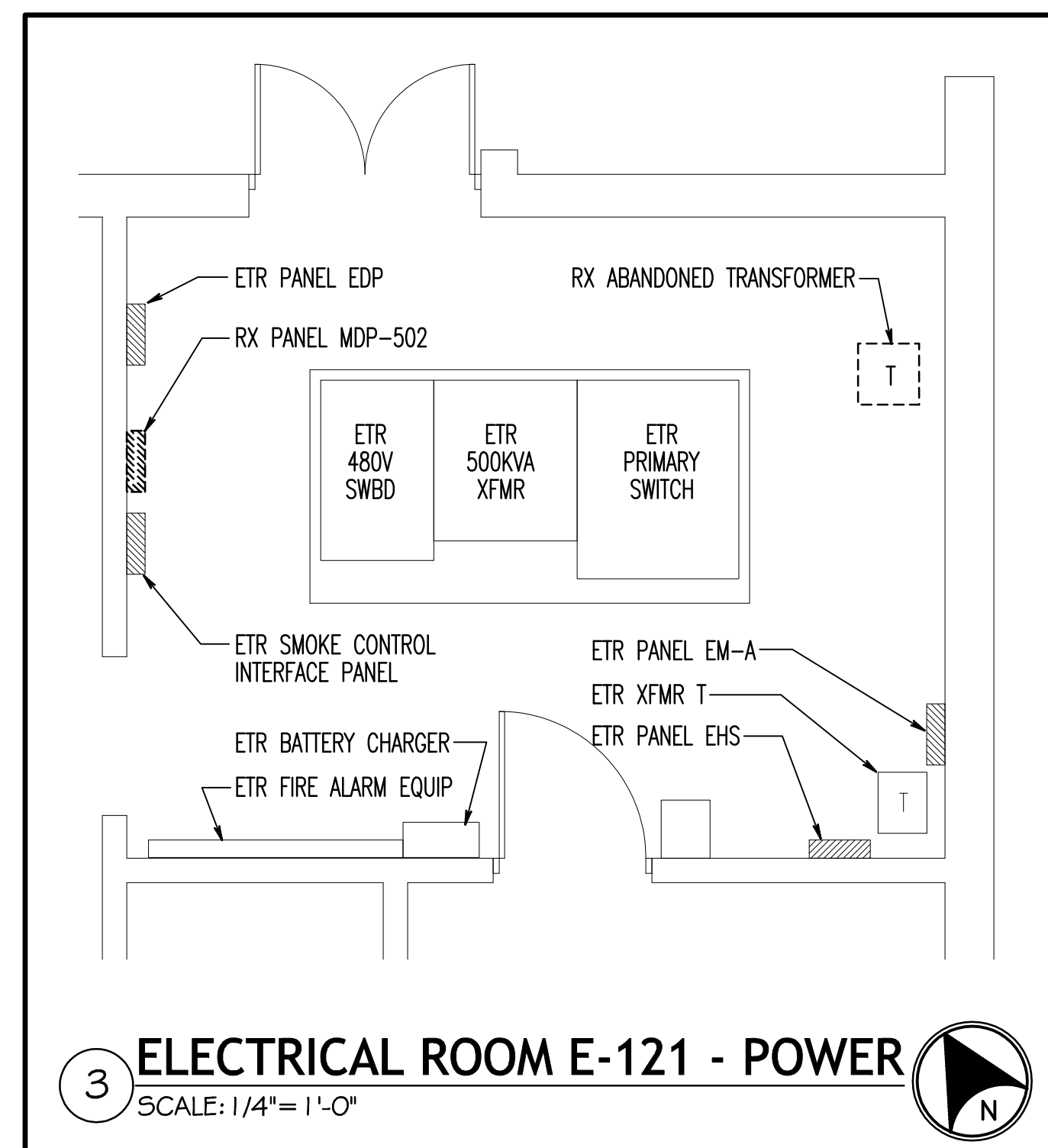
- EXISTING SHOWN WITH LIGHT WEIGHT LINE
- DEMOLITION SHOWN WITH HEAVY WEIGHT, DASHED LINE, - - - - -

SPECIAL NOTES: (APPLICABLE TO THIS SHEET ONLY)

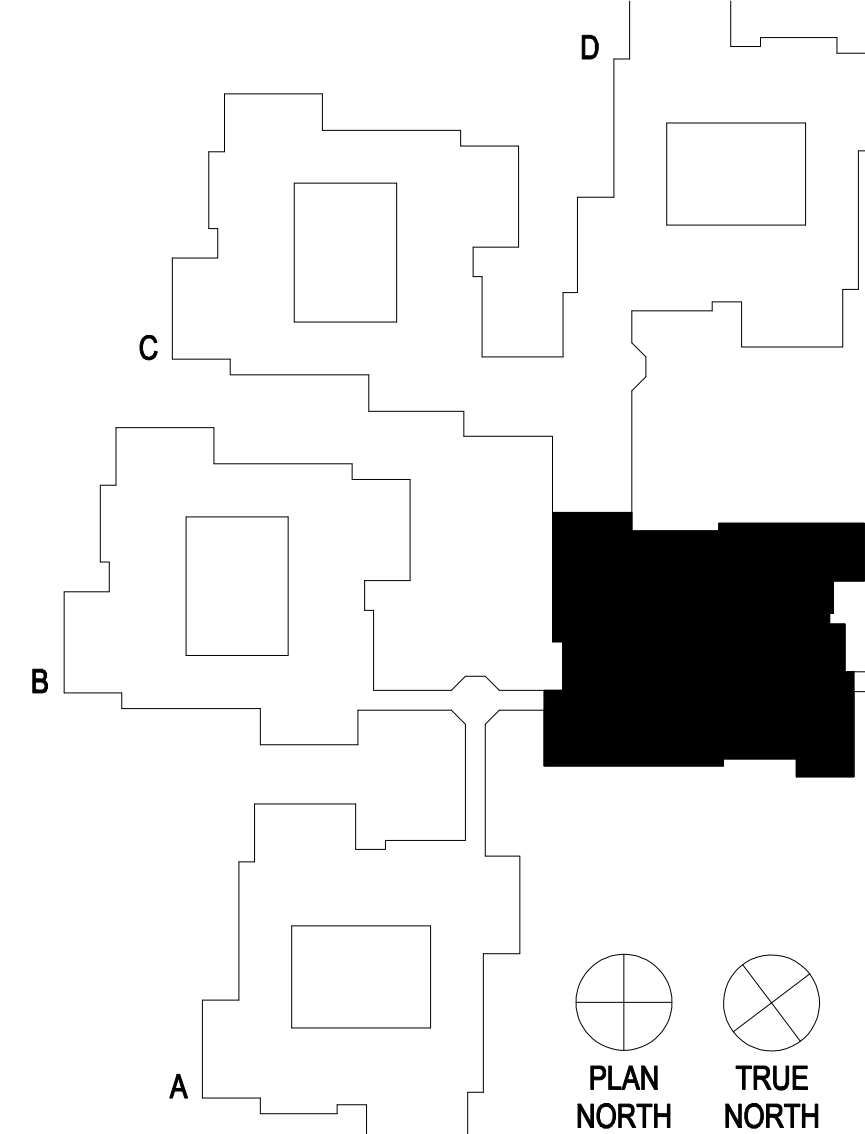
- REMOVE AND REINSTALL CCTV CAMERA AS DIRECTED BY THE VA.
- RELOCATE EXISTING DISCONNECTS FOR COMBI STEAMERS TO NEW LOCATION AS INDICATED ON DRAWING ES-401. EXTEND WIRING AND CONDUIT AS NECESSARY.
- REMOVE CONDUCTORS FROM CONDUIT STUB-UP TO TRAY LINE. CUT CONDUIT FLUSH WITH FLOOR AND PLUG.
- DISCONNECT POWER AND NETWORK CONNECTIONS FROM PNEUMATIC TUBE SYSTEM CONTROL STATION. EXTEND EXISTING WIRING AND CONDUIT TO NEW LOCATION IN ADMIN CLOSET E111 (NEW WORK). GENERAL CONTRACTOR SHALL USE AN APPROVED INSTALLER OR SUB-CONTRACTOR FROM THE MANUFACTURER TO PERFORM THE WORK OF RELOCATING THE PNEUMATIC TUBE CONTROL SYSTEM.
- DISCONNECT POWER AND NETWORK CONNECTIONS FROM HIRSH M-8 PANEL. EXTEND EXISTING WIRING AND CONDUIT TO NEW LOCATION IN ADMIN CLOSET E111 (NEW WORK). GENERAL CONTRACTOR SHALL USE AN APPROVED INSTALLER OR SUB-CONTRACTOR FROM THE MANUFACTURER TO PERFORM THE WORK OF RELOCATING THE HIRSH M-8 PANEL.



2 ELECTRICAL CLOSET E-131 - POWER
SCALE: 1/4" = 1'-0"



3 ELECTRICAL ROOM E-121 - POWER
SCALE: 1/4" = 1'-0"



KEY PLAN

Revision #1	05/04/12
100% Construction Documents Submission	02/24/12
95% Design Development	02/10/12
60% Design Development	01/20/12
Schematic Design	11/30/11
Issuances:	Date

ARCHITECT / ENGINEERS:

Oudens Knoop Knoop + Sachs Architects
2 Wisconsin Circle / Suite 820
Chevy Chase, MD 20815-7003
Tel: (301) 718-0080
Fax: (301) 718-9520

HENRY ADAMS
Consulting Engineers

Mechanical Electrical & Plumbing Engineers

Henry Adams, LLC
Consulting Engineers
600 Baltimore Avenue
Baltimore, MD 21204
Tel: (410) 296-6500
Fax: (410) 296-6501

Woods Peacock Engineering Consultants
Halifax Office Park
5250 Cherokee Avenue, Suite 420
Alexandria, VA 22312-2052
Tel: (703) 658-4400
Fax: (703) 658-4404

Patton Harris Rust & Associates
A Pennoni Company
117 East Piccadilly Street, Suite 308
Winchester, VA 22601-5002
Tel: (540) 667-2139
Fax: (540) 665-0493

Stamp/Seal

Drawing Title
**GROUND FLOOR PLAN -
ELECTRICAL DEMOLITION -
POWER AND COMMUNICATIONS**

Approved: Project Director

Project Title
**BUILDING 502 E WING
RENOVATION**

Location
MARTINSBURG, WV

Date
1/20/12

Checked
KMG

Drawn
MLS

VA Project Number
613-12-101

Building Number
502

Drawing Number
ES-102

Office of
Construction
and Facilities
Management

Department of
Veterans Affairs