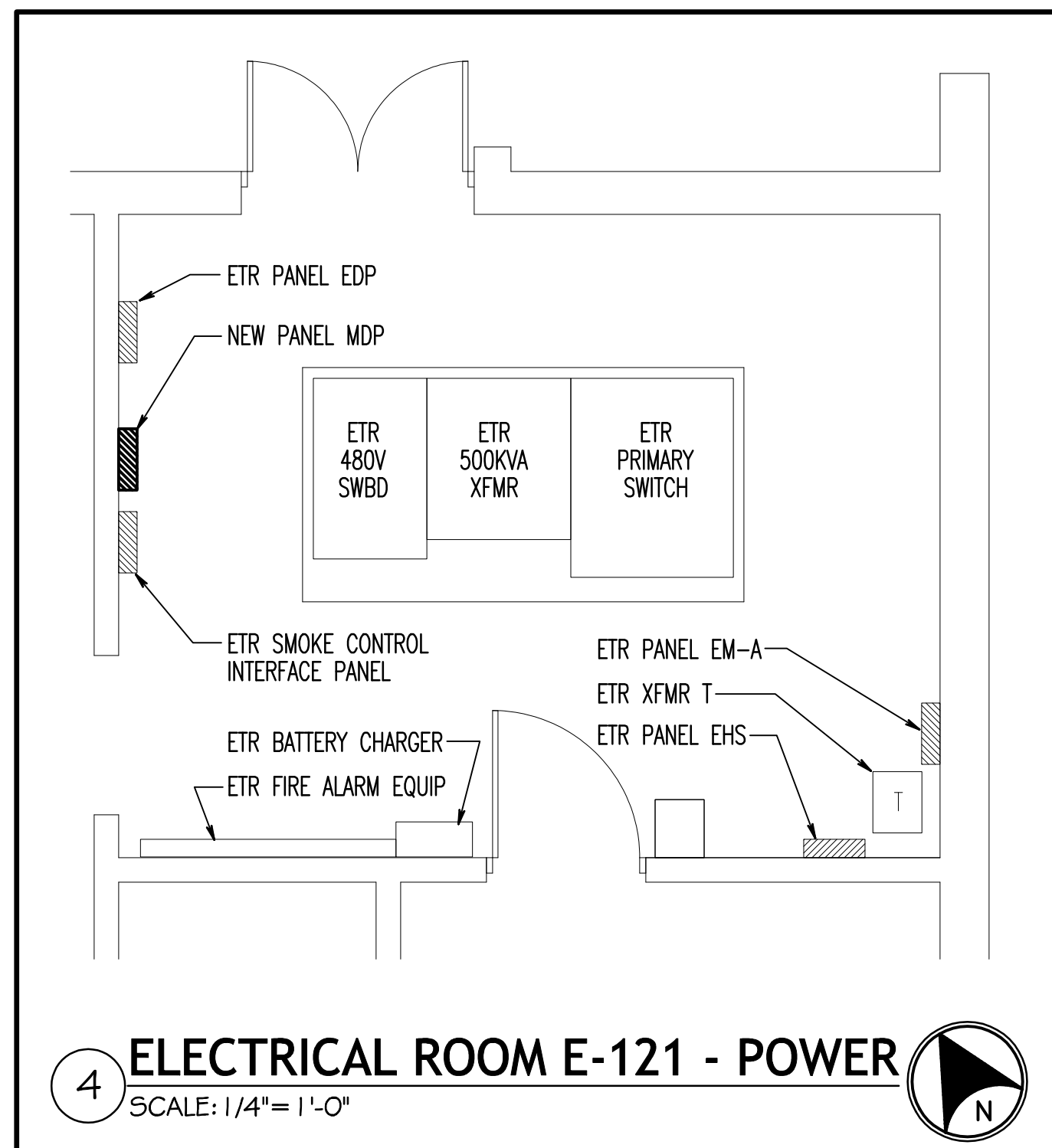
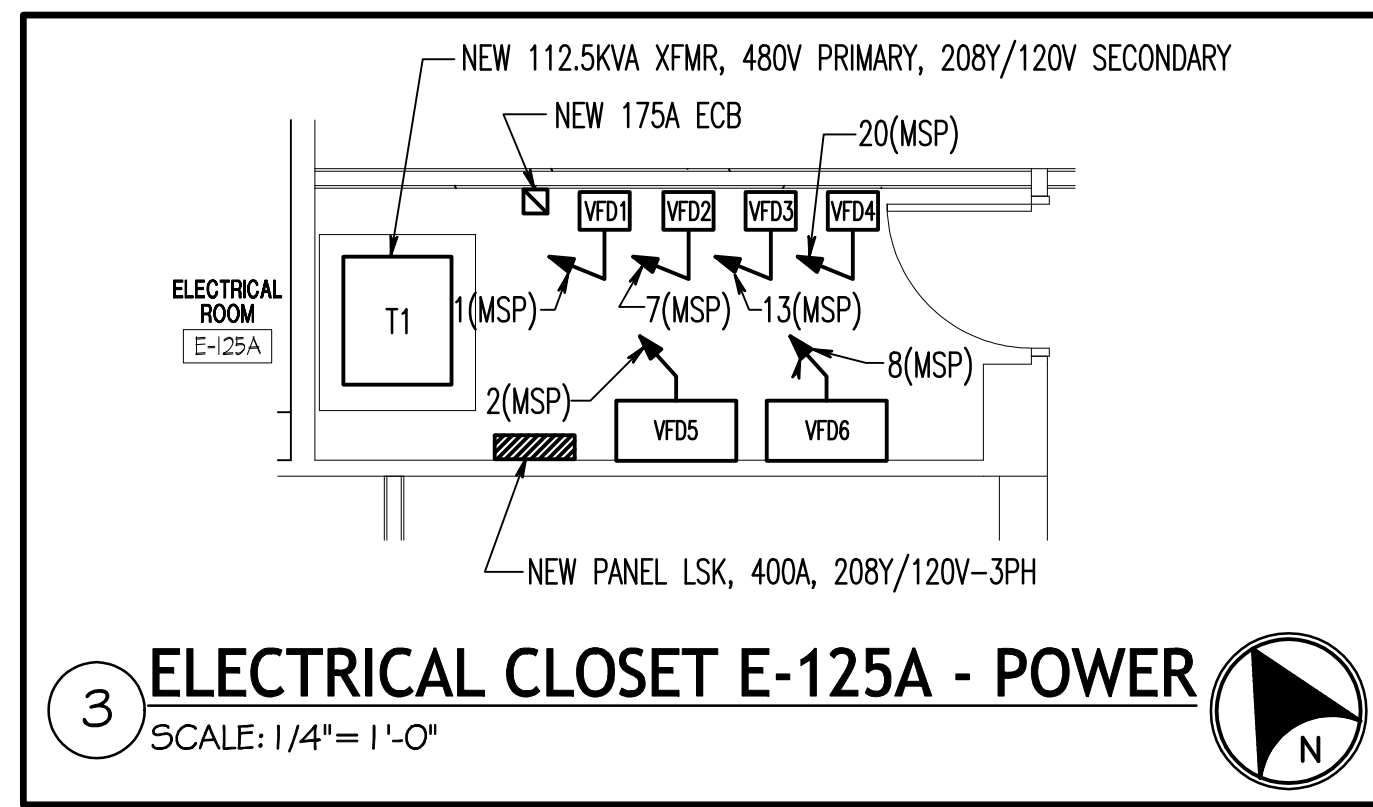
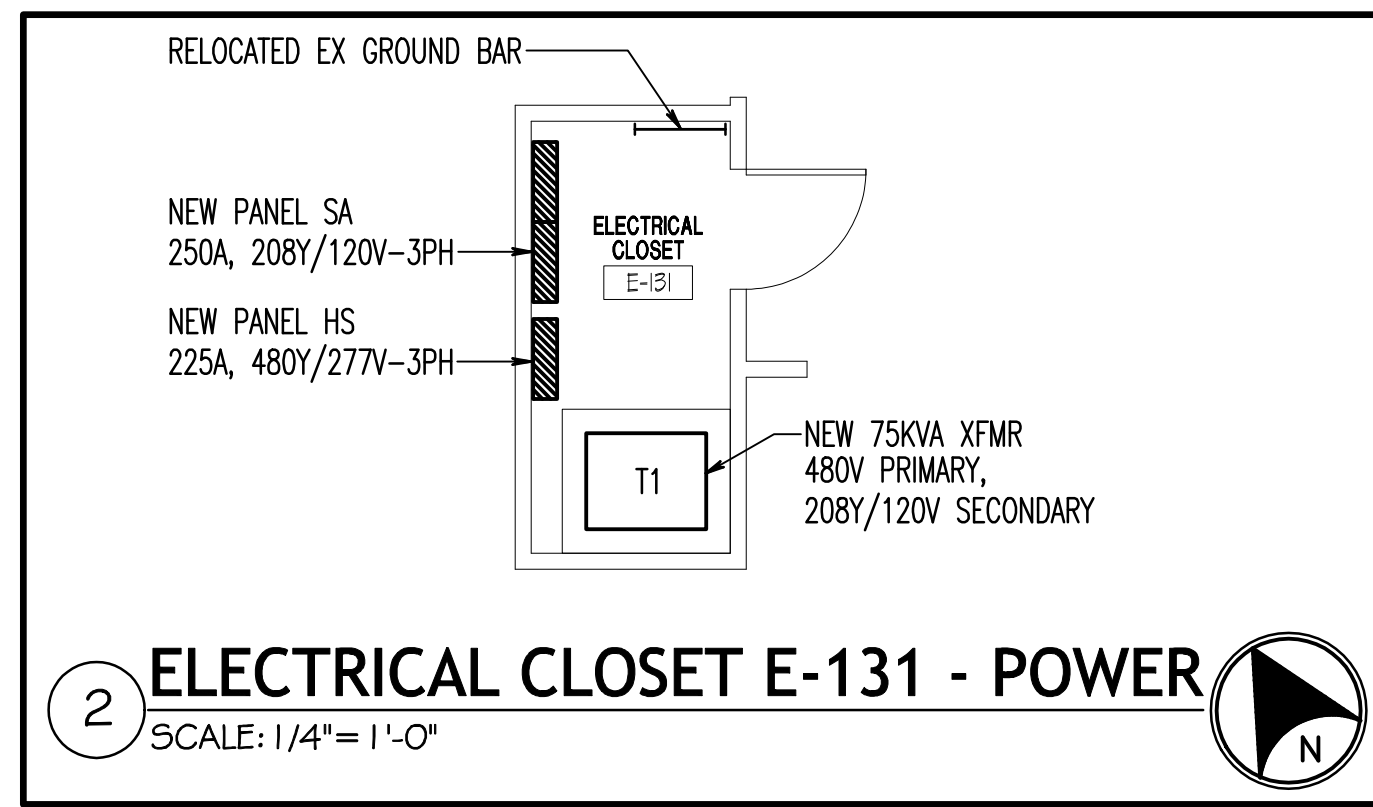


DRAWING NOTES: (APPLICABLE TO THIS DRAWING ONLY)

1. EXISTING SHOWN WITH LIGHT WEIGHT LINE
2. DEMOLITION SHOWN WITH HEAVY WEIGHT, DASHED LINE, - - - - -
3. NEW WORK SHOWN WITH HEAVY WEIGHT, SOLID LINE, - - - - -



**GROUND FLOOR PLAN - ELECTRICAL NEW WORK - POWER AND COMMUNICATIONS**  
SCALE: 1/8" = 1'-0"

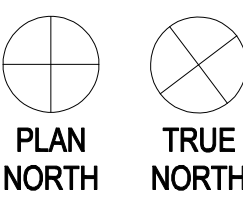
SPECIAL NOTES: (APPLICABLE TO THIS SHEET ONLY)

1. FOR REFRIGERATOR. MOUNT TO SUIT.
2. FOR MICROWAVE. MOUNT TO SUIT.
3. FOR ADDITIONAL ELECTRICAL WORK IN THIS AREA, SEE DRAWING ES-401.
4. FOR ELECTRICAL WORK IN THIS AREA, SEE 2/ES-202.
5. FOR ELECTRICAL WORK IN THIS AREA, SEE 3/ES-202.
6. FOR ELECTRICAL WORK IN THIS AREA, SEE 4/ES-202.
7. FOR FIREPLACE. MOUNT TO SUIT.
8. FOR EXISTING AIR CURTAIN. MOUNT TO SUIT.
9. 3/8" #10GW IN 3/4" TO VFD1.
10. 3/10" #10GW IN 3/4" TO VFD3.
11. 2P-60A FSS (FUSE AS RECOMMENDED BY MANUFACTURER) IN NEMA/UL 1 ENCLOSURE.

12. FOR REFRIGERATED WATER FOUNTAIN. MOUNT TO SUIT.
13. PROVIDE JUNCTION BOX FOR DOOR CONTROLLER. PROVIDE NECESSARY WIRING IN CONDUIT BETWEEN THE DOOR CONTROLLER, PUSH PLATES, ETC. AS RECOMMENDED BY THE MANUFACTURER. PROVIDE NECESSARY JUNCTION BOXES FOR THE VARIOUS DOOR CONTROL DEVICES AS RECOMMENDED BY THE MANUFACTURER. PROVIDE A FIRE ALARM CONTROL MODULE, INTERLOCK WITH THE DOOR CONTROLLER AND CONNECT TO FIRE ALARM SYSTEM AS DIRECTED BY FIRE ALARM EQUIPMENT MANUFACTURER.
14. 2P-60A FSS (FUSE AS RECOMMENDED BY MANUFACTURER) IN NEMA/UL 1 ENCLOSURE, MOUNTED ON KINDORF.
15. 3/10" #10GW IN 3/4" TO VFD5.
16. 3/8" #10GW IN 3/4" TO VFD6.
17. NEMA SIZE 1 COMBINATION MOTOR STARTER WITH 3P, 3A MCP, GREEN OFF, RED RUNNING PILOT LIGHTS, PRIMARY 480V - SECONDARY 120V CONTROL POWER TRANSFORMER WITH PRIMARY AND SECONDARY FUSES AND HOA SWITCH WITH 2NC AND 2NO AUXILIARY CONTACTS IN NEMA/UL 1 ENCLOSURE. MOUNT ON WALL ABOVE CEILING.
18. RECONNECT POWER AND NETWORK CONNECTIONS TO RELOCATED PNEUMATIC TUBE SYSTEM CONTROL STATION.
19. RECONNECT POWER AND NETWORK CONNECTIONS TO RELOCATED HIRSH M-8 PANEL.

1/8" = 1' - 0"

KEY PLAN



Revision #1	05/04/12
100% Construction Documents Submission	02/24/12
95% Design Development	02/10/12
60% Design Development	01/20/12
Schematic Design	11/30/11
Issuances:	Date

ARCHITECT / ENGINEERS:

**Oudens Knoop Knoop + Sachs Architects**  
2 Wisconsin Circle / Suite 820  
Chevy Chase, MD 20815-7003  
Tel: (301) 718-0080  
Fax: (301) 718-9520

**HENRY ADAMS**  
Consulting Engineers  
Mechanical Electrical & Plumbing Engineers

**Henry Adams, LLC**  
Consulting Engineers  
600 Baltimore Avenue  
Baltimore, MD 21204  
Tel: (410) 296-6500  
Fax: (410) 296-6501

**Woods Peacock Engineering Consultants**  
A Pennoni Company  
117 East Piccadilly Street, Suite 308  
Winchester, VA 22312-2052  
Tel: (540) 687-2139  
Fax: (540) 685-0493

**Patton Harris Rust & Associates**  
A Pennoni Company  
117 East Piccadilly Street, Suite 308  
Winchester, VA 22312-2052  
Tel: (540) 687-2139  
Fax: (540) 685-0493

Stamp/Seal

Drawing Title  
**GROUND FLOOR PLAN -  
ELECTRICAL NEW WORK -  
POWER AND COMMUNICATIONS**

Approved: Project Director

Project Title  
**BUILDING 502 E WING  
RENOVATION**

Location  
**MARTINSBURG, WV**

Date  
**1/20/12**

Checked  
**KMG**

Drawn  
**MLS**

VA Project Number  
**613-12-101**

Building Number  
**502**

Drawing Number  
**ES-202**

Office of  
Construction  
and Facilities  
Management

Department of  
Veterans Affairs